

SDCC Network Operations Status Report (Jan 21, 2021)

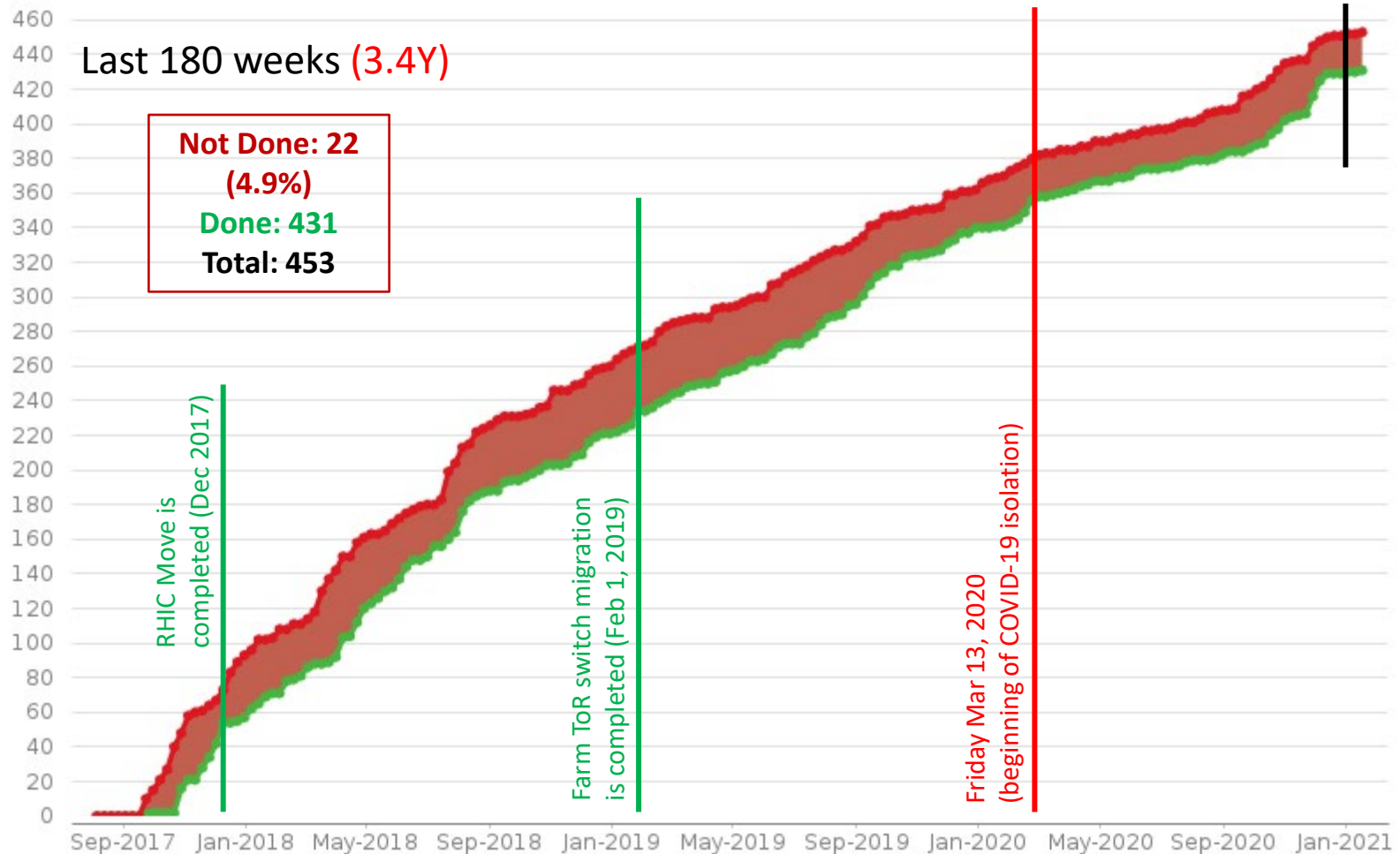
Alexandr ZAYTSEV
alezayt@bnl.gov

Project: SDCC Network Operations & Interventions

Chart

This chart shows the number of issues **created** vs. the number of issues **resolved** in the last **1260** days.

Previous Report

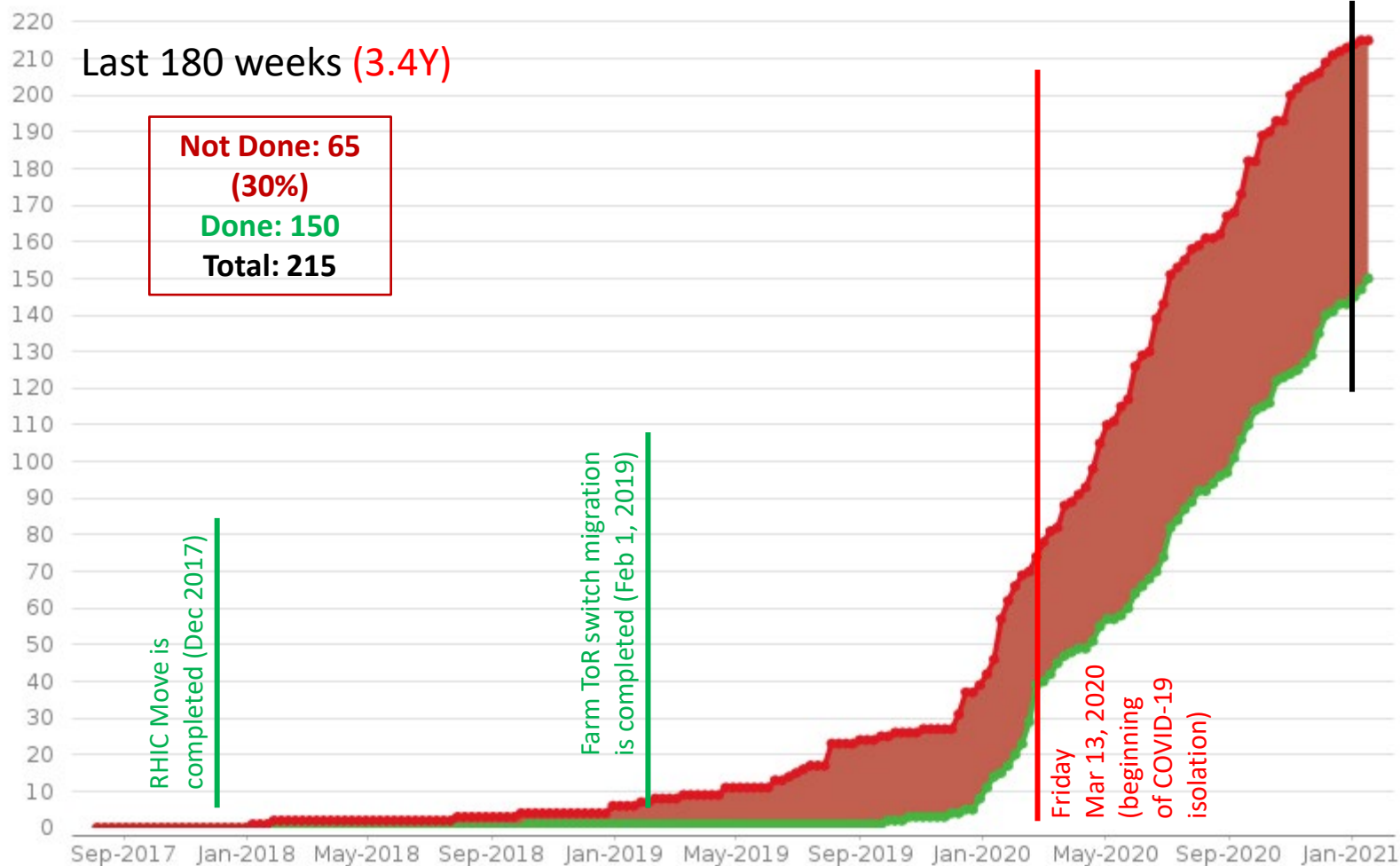


Project: SDCC Datacenter B515/B725 Transition (CY20-23)

Chart

This chart shows the number of issues **created** vs. the number of issues **resolved** in the last **1260** days.

Previous Report



Ongoing/Upcoming Interventions and Equipment Deployment/Retirement Operations

- The configuration of management interfaces of CSI IBM TS4500 Tape Library in row 50N in CDCE is completed yesterday by IBM contractor
- CFN Lustre HW refresh targeting rack position 33-8 in QCDOC
 - The rack frame is in place, CDUs are received, JBODs & headnodes are received
 - All network uplinks are provisioned; rack 33-8 integration is in progress
- Belle II CPU addition of FY21 (2 new racks)
 - Targeting rack positions 51-[3, 4] with CDCE, replacing the existing CPU racks standing there
 - To be added to the set of rack to be moved to B725 in 2021Q3 (18 CPU racks in total on the move now)
 - The ToR switches and transceivers/uplinks are to be reused
- Belle II DISK addition of FY21: a single JBOD+headnode pair to be added to rack 43-4
 - JBOD is received, ETA for the headnode close to the end of Jan 2021 – early Feb 2021 (this additional storage is placed into B515 datacenter before B725 datacenter is available)
 - Adjustments to the physical layout of existing JBOD rack 43-4 is needed to accommodate the 5th JBOD+headnode pair is still going to be needed later in Jan 2021 as scheduled interventions on dcb1st[007, 008] and qgp005 (STAR XRootD) storage headnodes – All Done
 - All network uplinks are provisioned; all adjustments to the CDU layout of rack 43-4 are done, the installation of Belle II JBOD from FY21 purchase can proceed
- sPHENIX dCache central components migration to the new HW in rack 45-6
 - 6x new servers are expected to be received soon
 - May need to consider performing HW refresh for stargrid0[1-4] server group (4x Dell R710s) sitting in the same rack in order to gain some rack space back in this shared infrastructure rack

B725 Datacenter Construction Update: The MDH floor and MDH side water & power distribution systems for PS #1-2 are deployed, yet much work on central infrastructure remains to be done
(on track for beginning of operations in 2021Q3 so far)

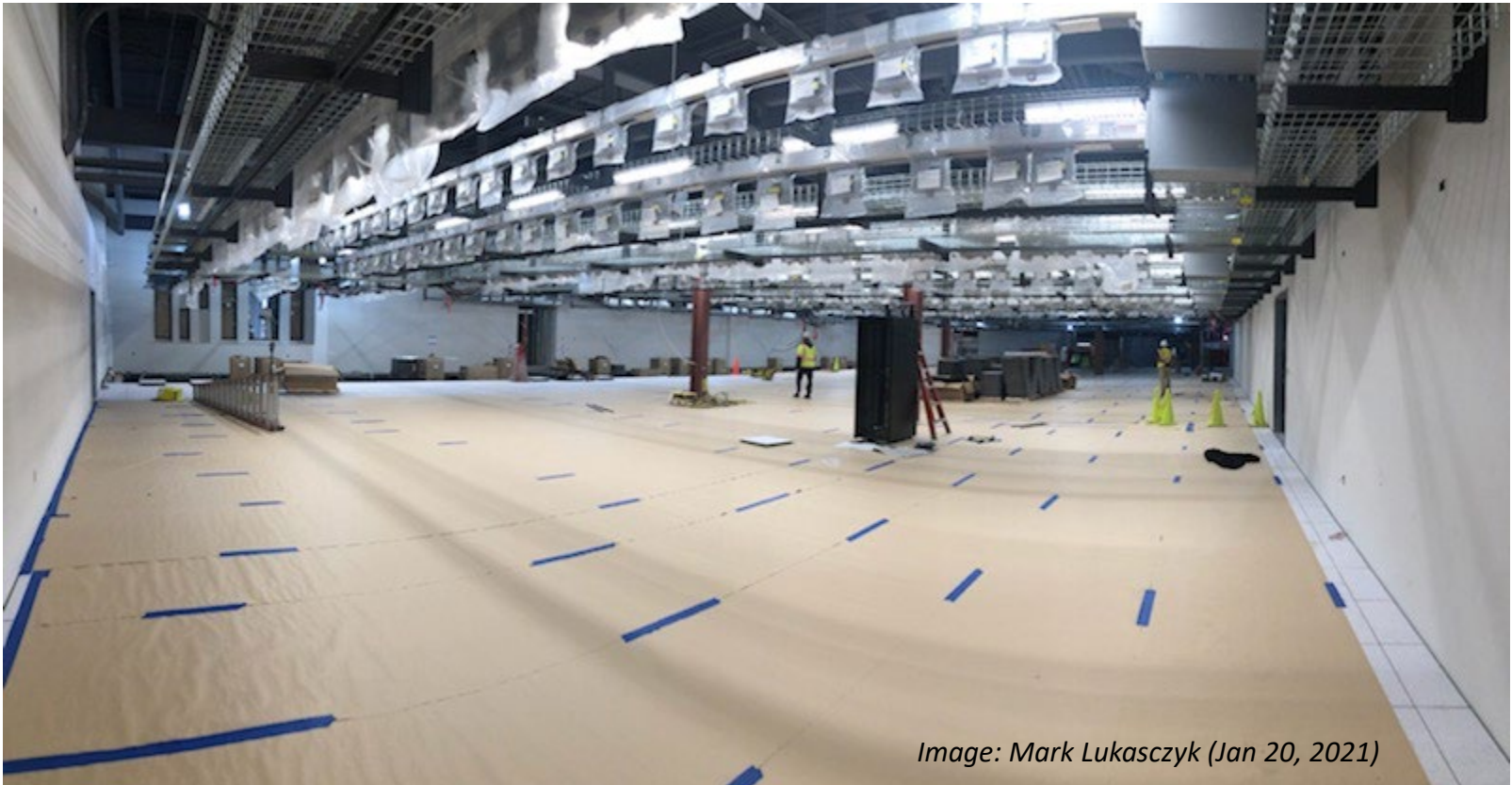


Image: Mark Lukasczyk (Jan 20, 2021)

Questions & Comments