

5/20/21 sPHENIX PMG Construction Update

AH track upgrades complete



Start cradle-base install in AH 5/25



1. Cradle-base install

1. AH track upgrade complete (Jim Mills lead this effort)
2. **Component delivery from Streck's underway**, staging in building 912
 1. Assembly work in 912 → Attach large “joiner plate” to south half-base then take to 1008
3. AH prep
 1. Allow adequate time for north-east temp track concrete to cure → then shift over to allow flatbed truck access
 2. Safety cross beams and temp Hillman rollers in shops, ready by end of week
4. Work planning approval
 1. Not a critical lift → less than 90% of 40-ton crane capacity
 2. No surprises → Design reviews, ESRC review, work planning review
5. Start install of south cradle-base half on 5/25-5/26 → Function of #2-#4

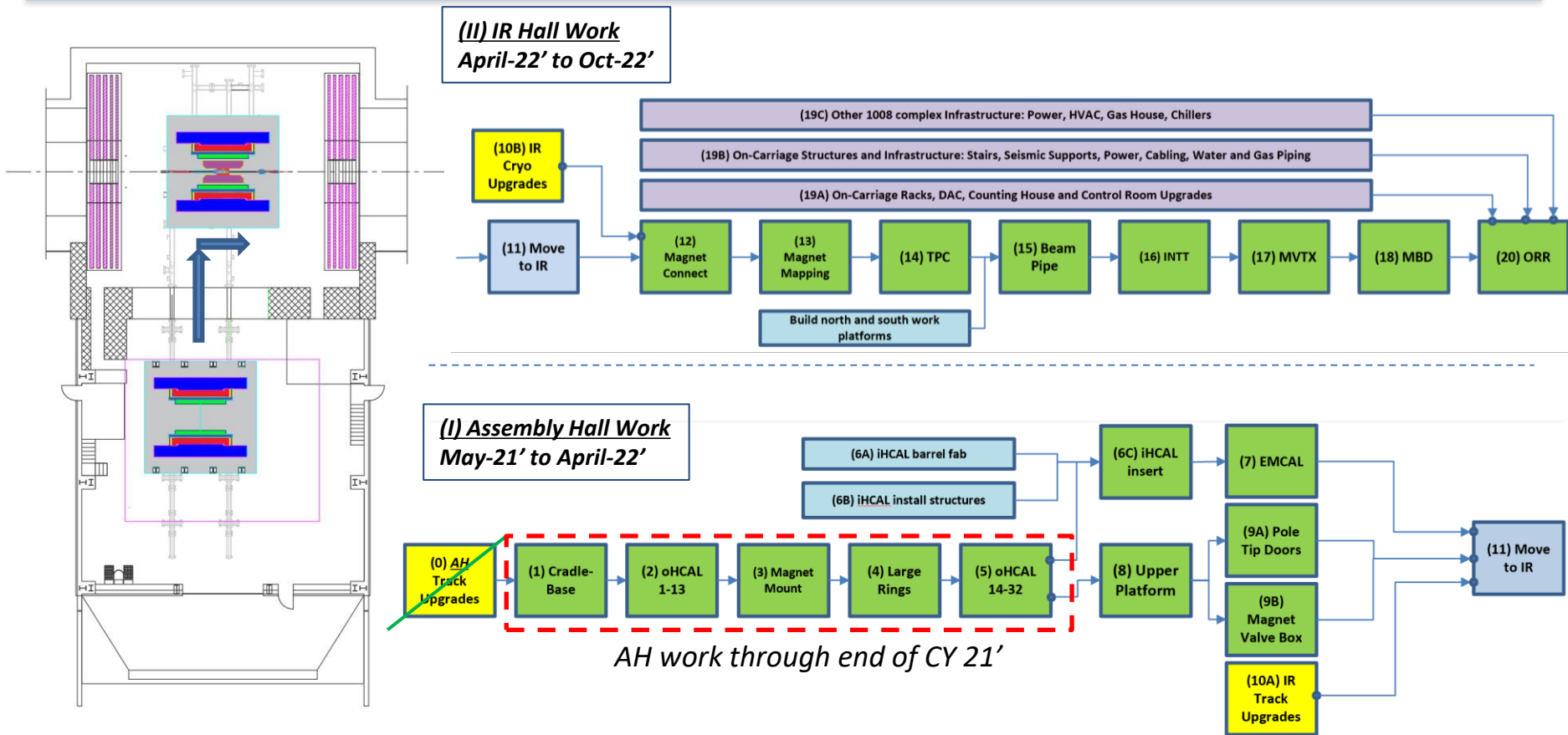
2. oHCAL sector 1-13 install

1. All components ready; sectors, splice plates, hardware
2. oHCAL install practiced in various orientations, team ready to build
3. Work planning documents out for review this week, divided between 1-13 and 14-32 for different lift classification
4. Start when cradle-base is complete

3. Install engineering priority

1. Complete iHCAL barrel fab and install design, and start procurement ASAP
 1. Working with review panel to schedule PRR for long lead items in early June.

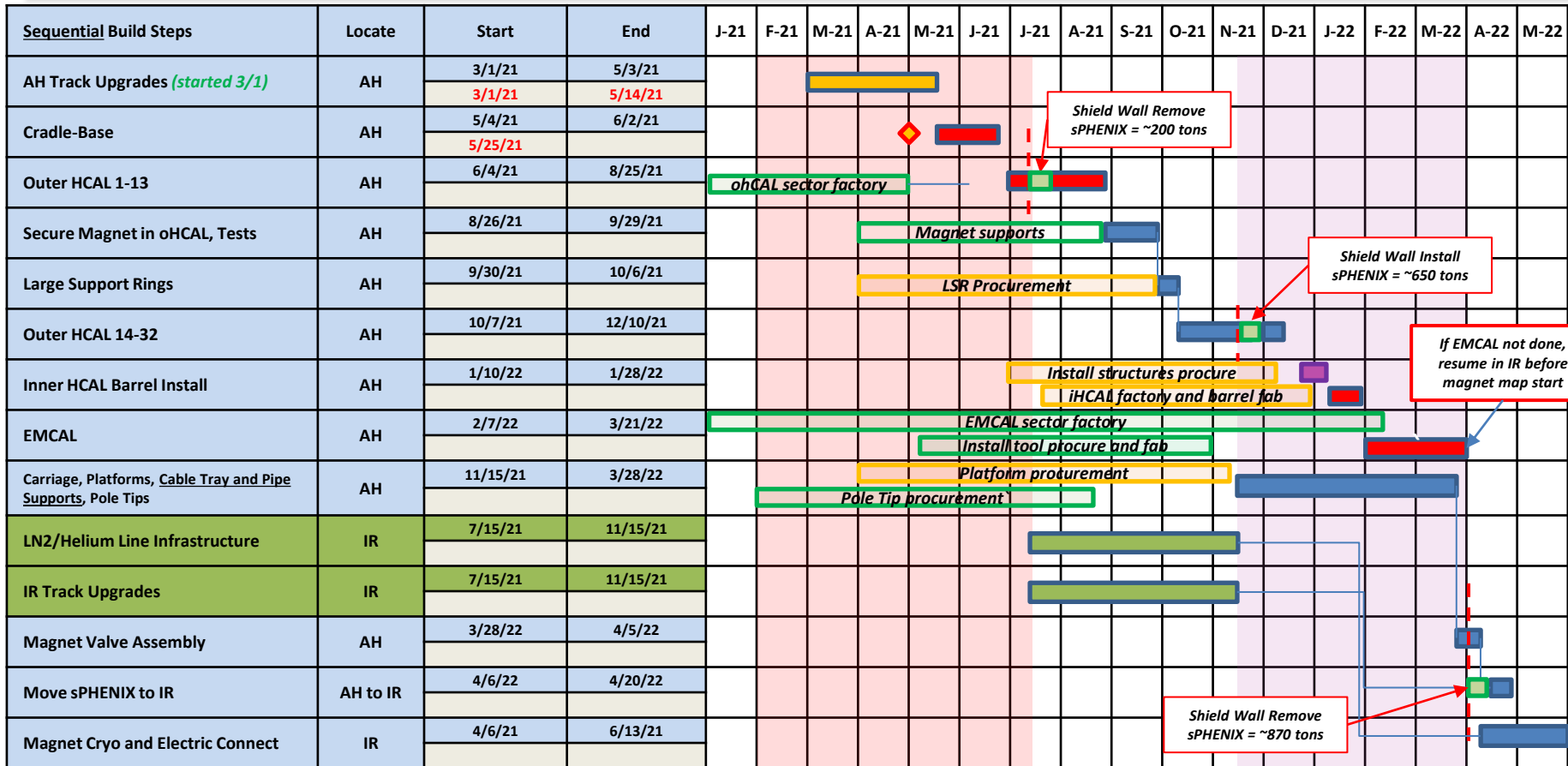
sPHENIX Assembly Sequence



sPHENIX AH Installation Schedule

Dates from April 21' I&F review
Actual AH starts

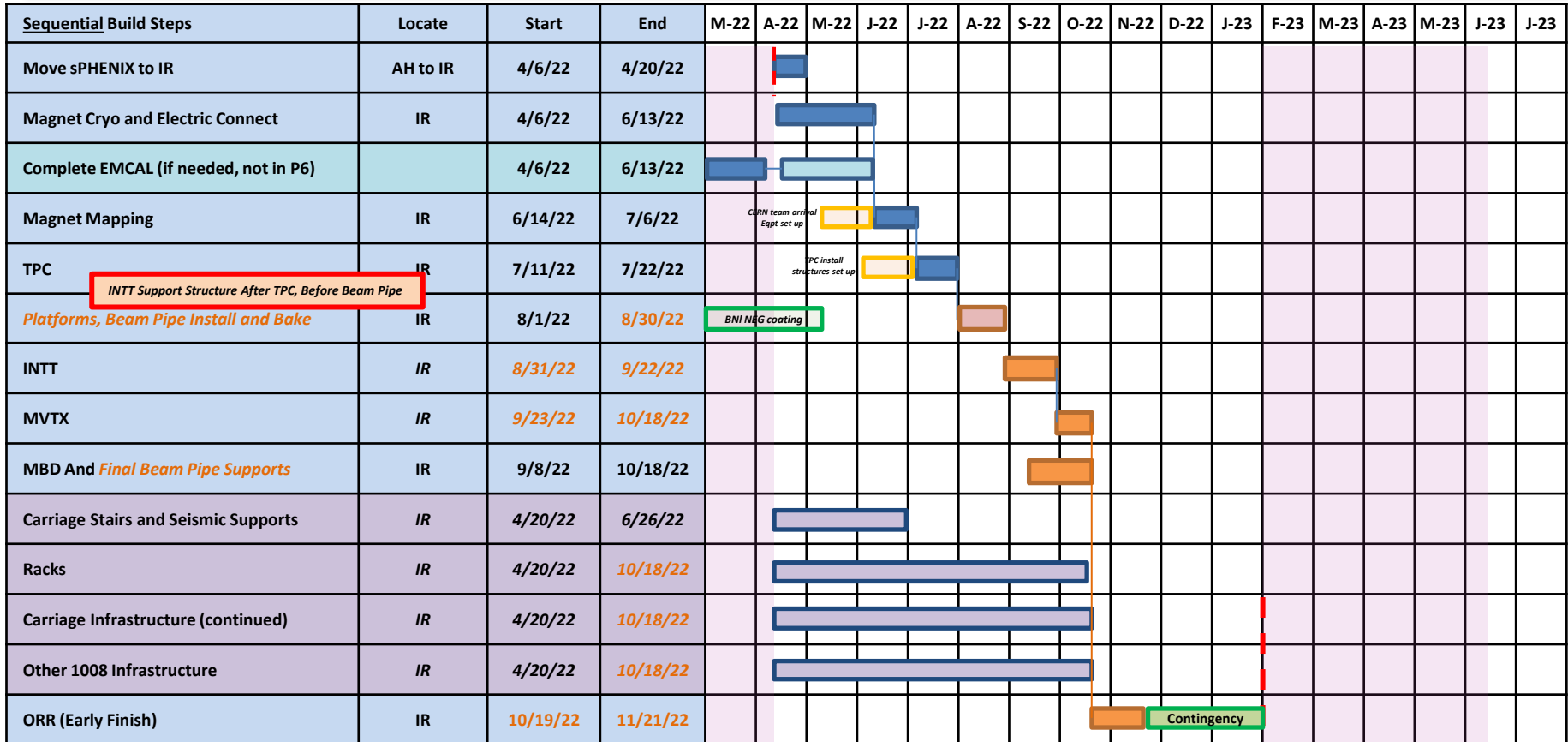
3/1/21	5/3/21
3/1/21	5/14/21



RHIC Run FY21
1/30/21 to 7/15/21

RHIC Run FY22
11/15/21 to 4/3/22

sPHENIX IR Installation Schedule



RHIC Run FY22
11/15/21 to 4/3/22

RHIC Run FY23
Model (Jan to June)