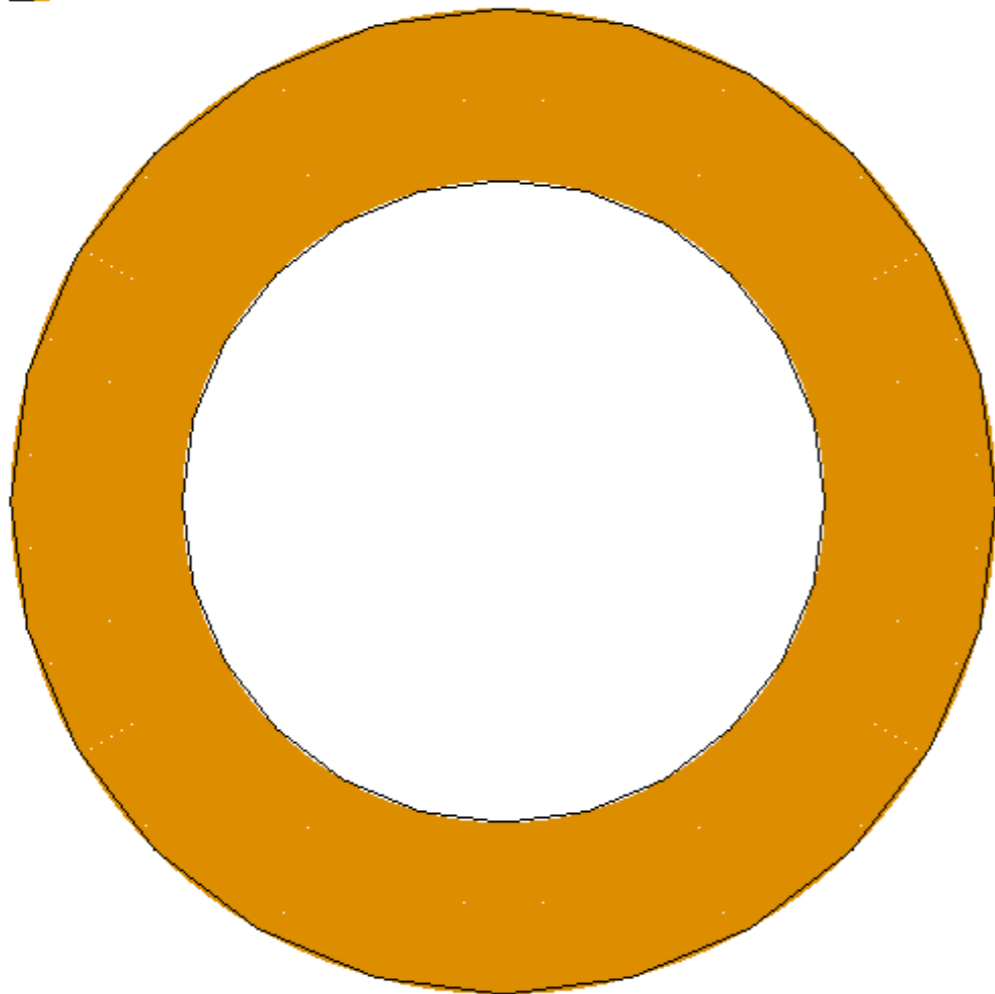
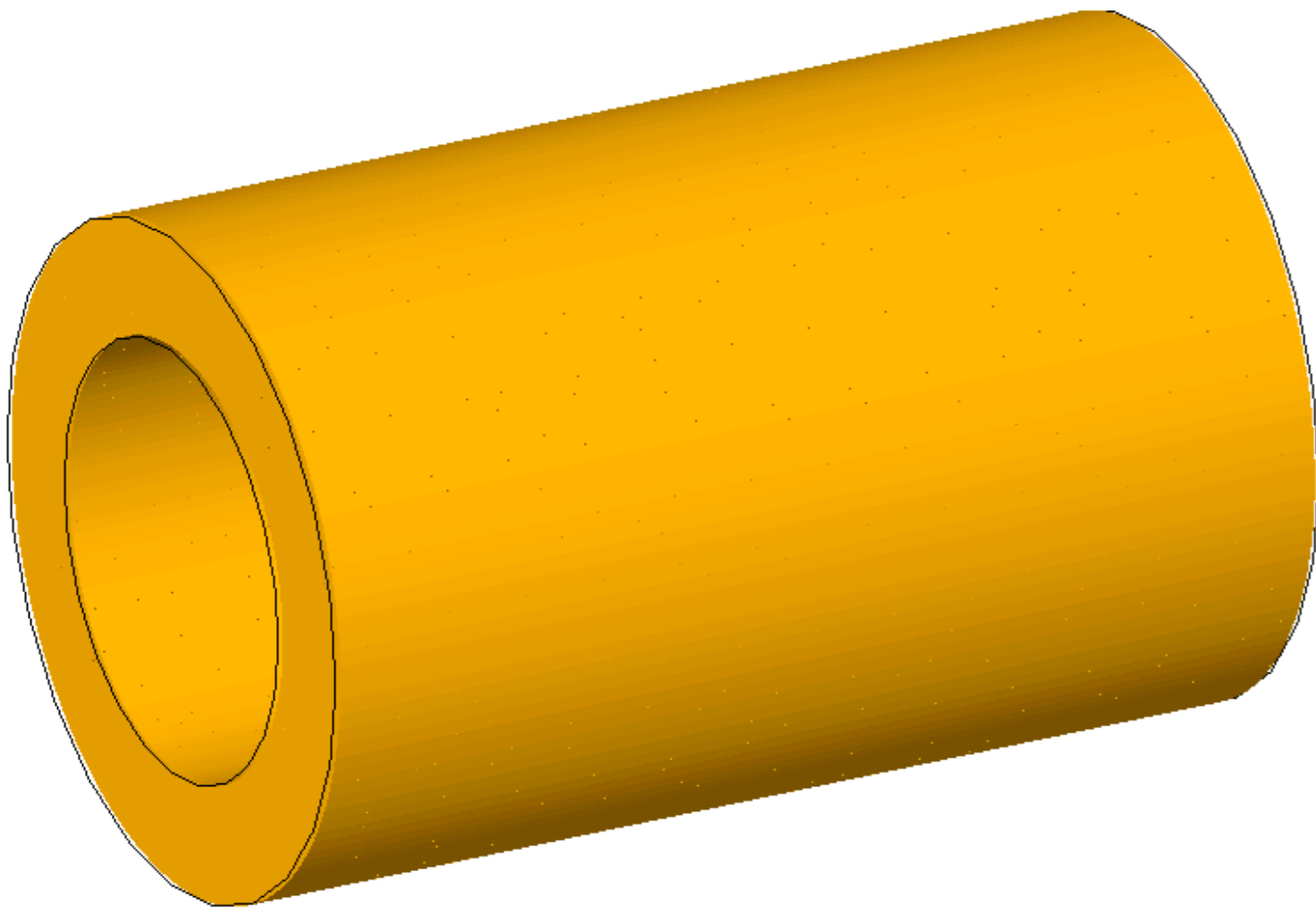


# **BECAL Update**

Nathaly Santiesteban



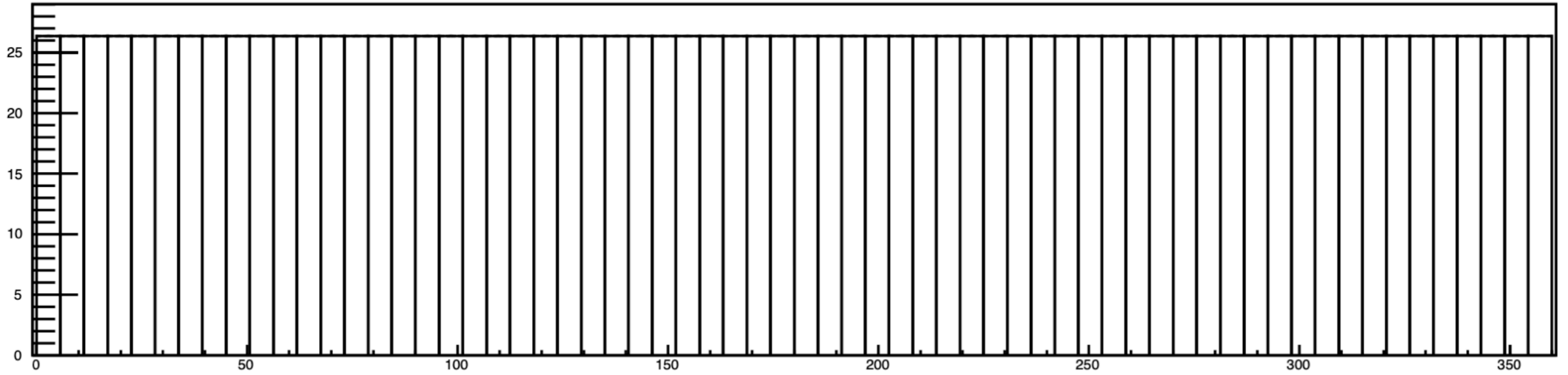
### Tests

1. Cover all gaps on the detector
2. Make the towers longer

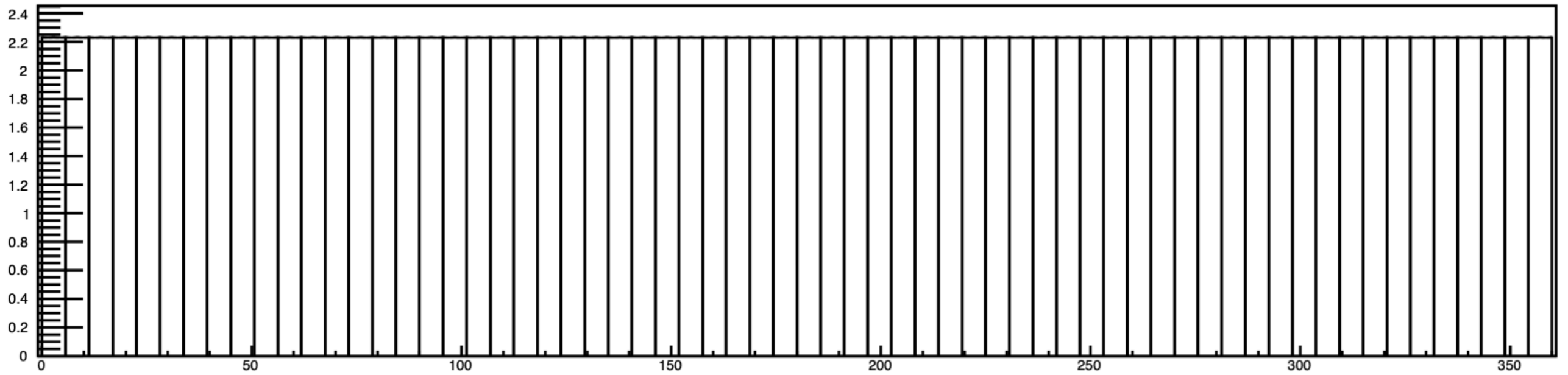
No difference in the result

# Material Scan

x0 vs phi

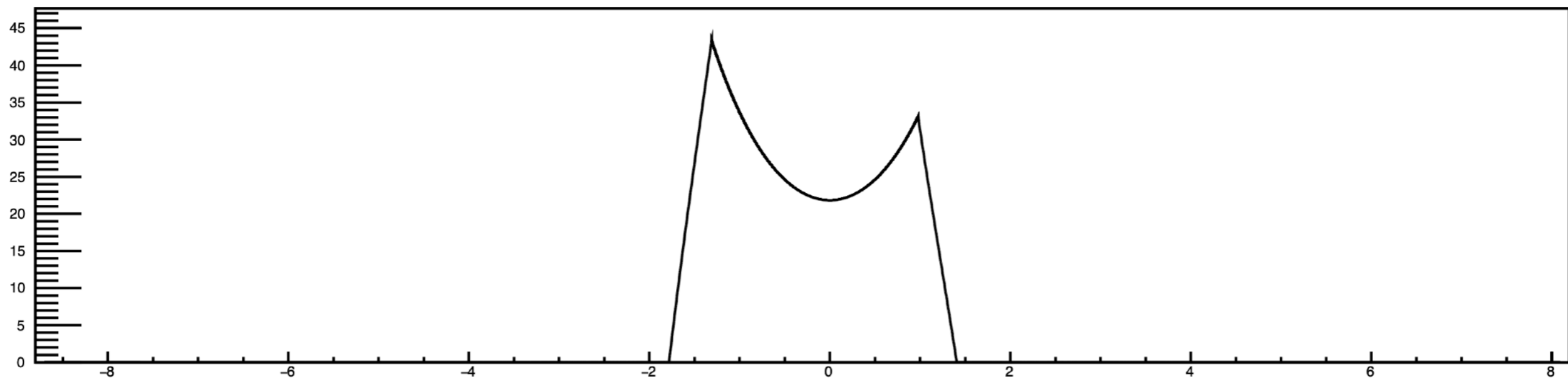


lamda0 vs phi

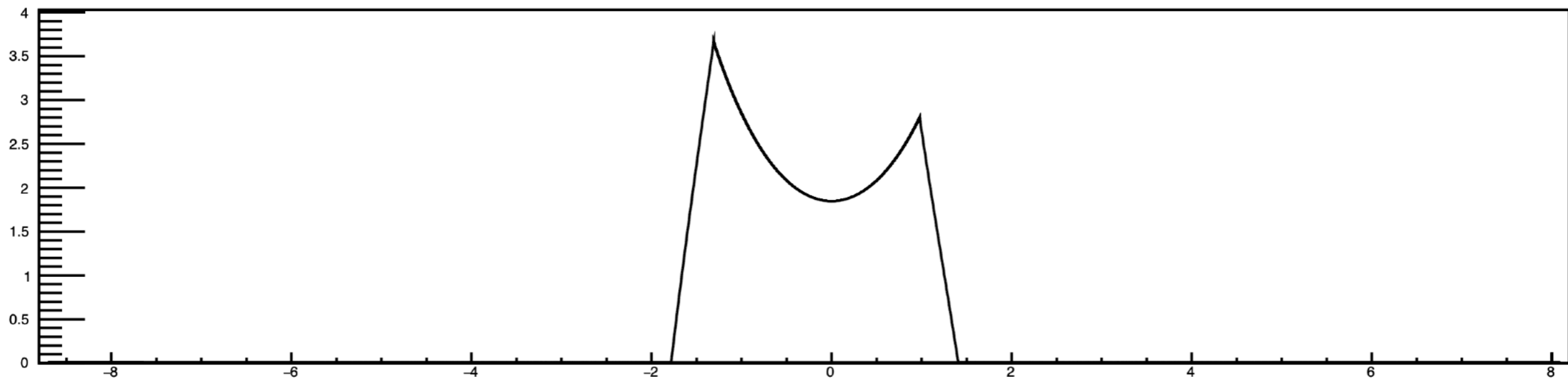


Towers need phi projectivity

x0 vs eta



lamda0 vs eta



# Checking Energy Deposited DST Reader Evaluator

