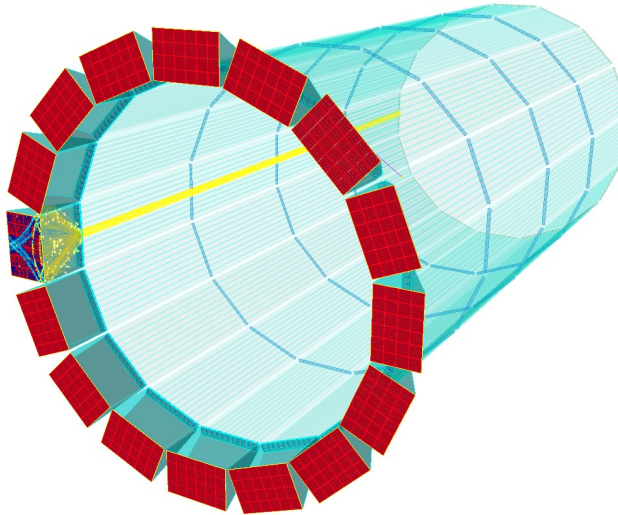


DIRC@ATHENA

Greg Kalicy



Jochen Schwiening



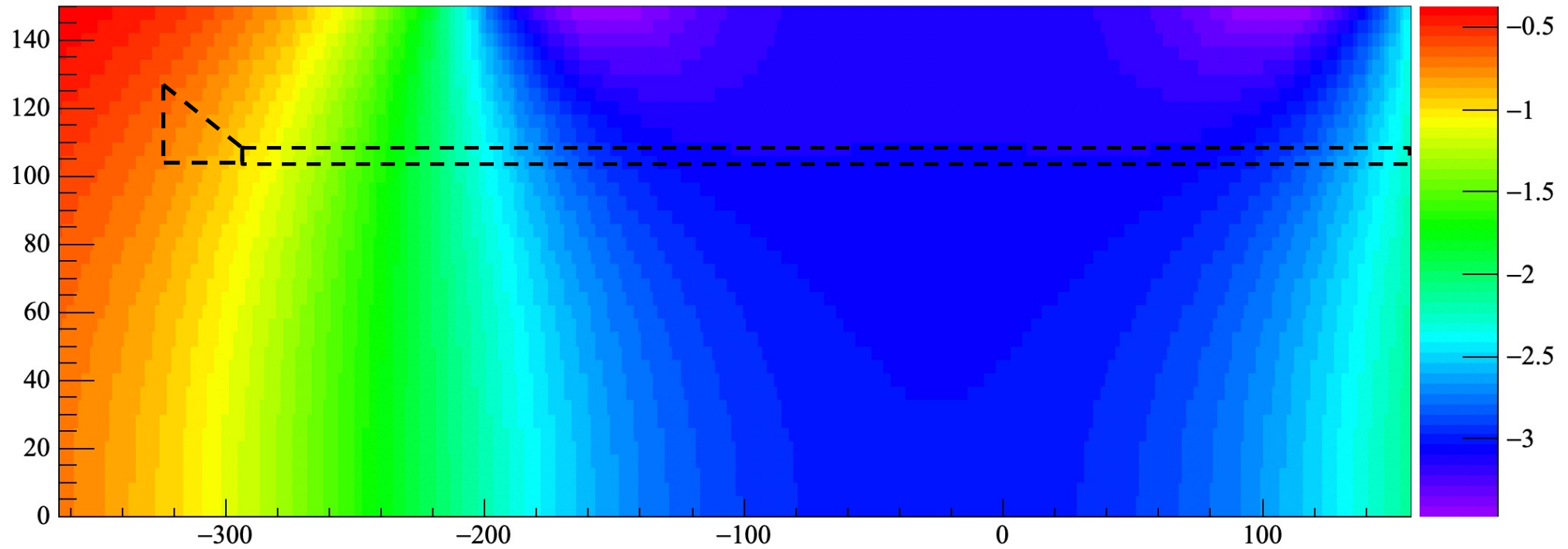
- Magnetic field maps vs the detector plane

October 11 2021

DIRC@ATHENA WITH SOLENOID MAGNETIC FIELD

Z-component

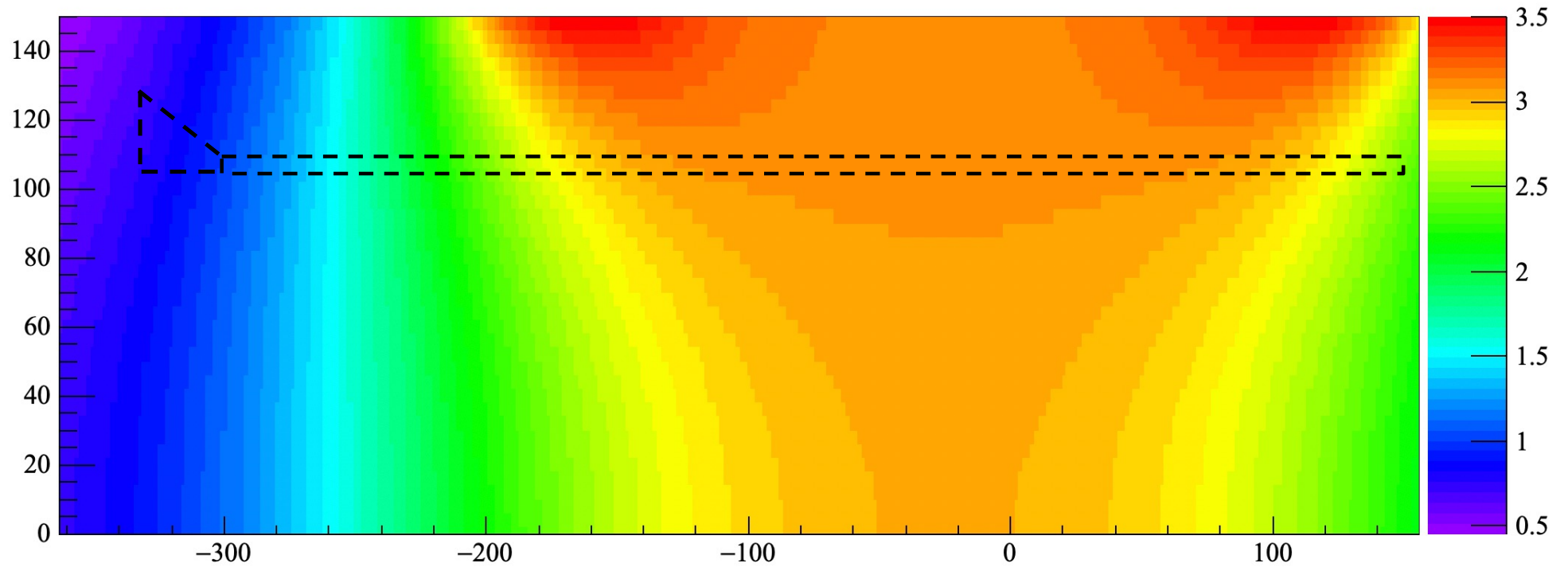
Solenoid shift by 25 cm in negative direction



DIRC@ATHENA WITH SOLENOID MAGNETIC FIELD

Solenoid shift by 25 cm in negative direction

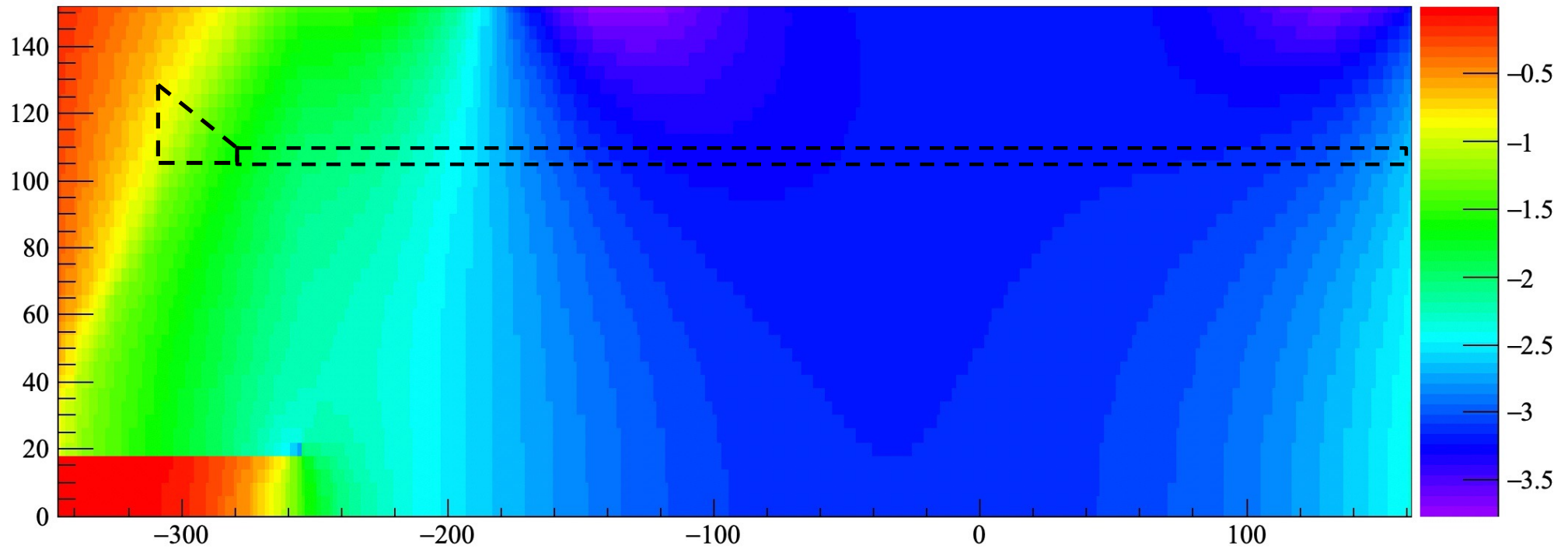
$\text{SQRT}(\text{BR}^2 + \text{BZ}^2)$



DIRC@ATHENA WITH SOLENOID MAGNETIC FIELD

Z-component

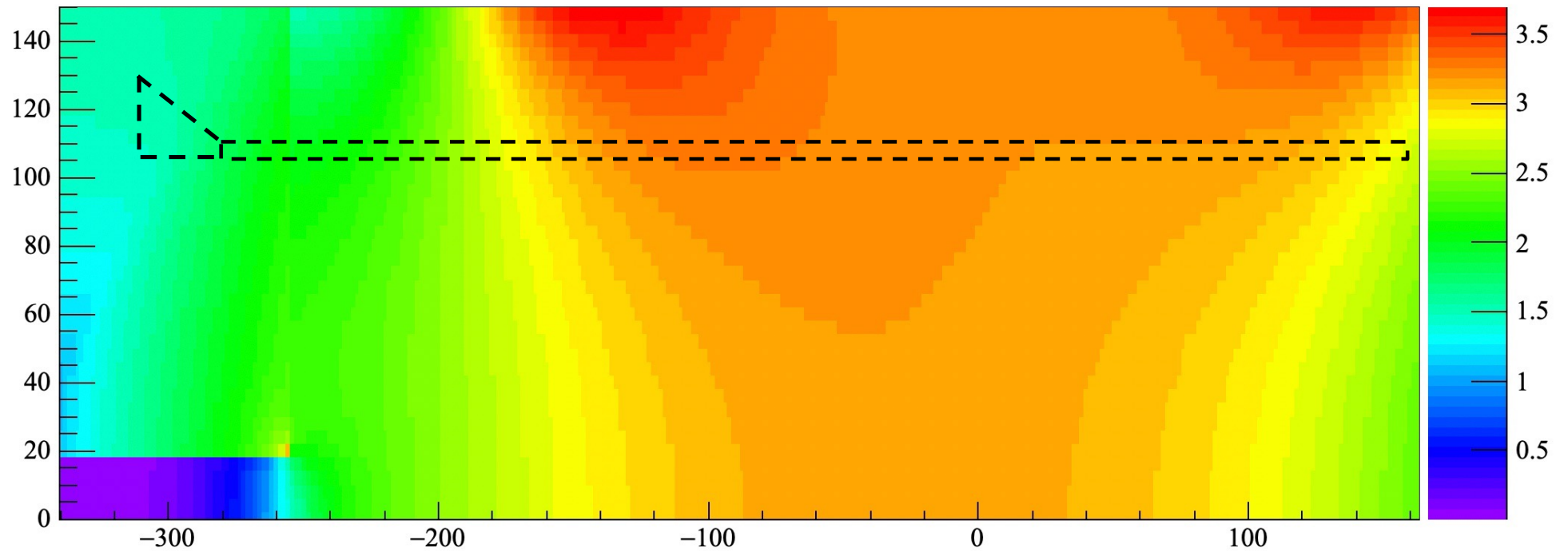
Old location!



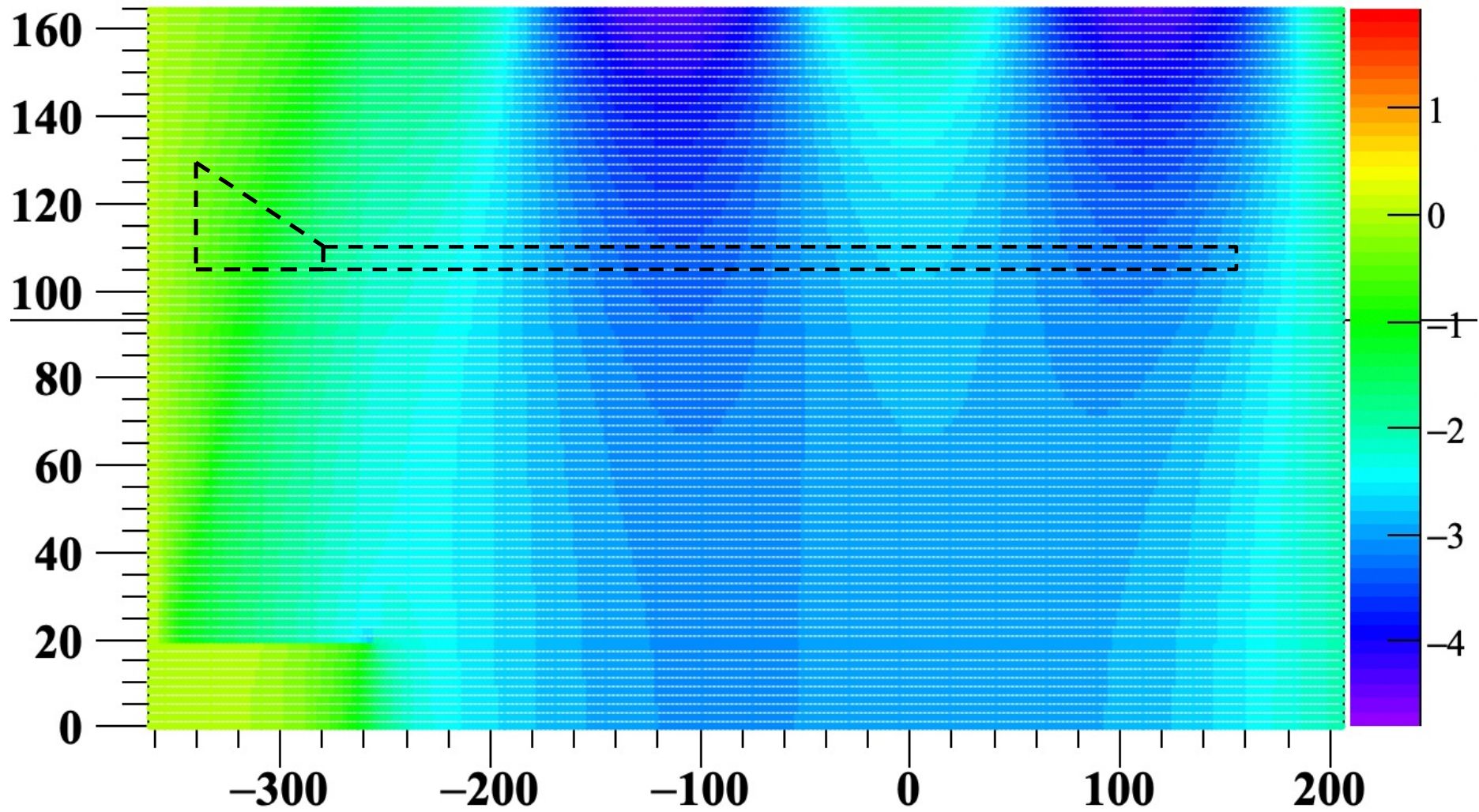
DIRC@ATHENA WITH SOLENOID MAGNETIC FIELD

Old location!

$\text{SQRT}(\text{BR}^2 + \text{BZ}^2)$



DIRC@ATHENA WITH Helmholtz coil MAGNETIC FIELD



<https://lists.bnl.gov/pipermail/eic-ip6-software-/2021-May/000019.html>,
"EIC_v.0.1.0_Magnetic_Field_Map_2021_05_28_radial_coords_[cm]_[T].Bmap"