

Event rates in spectrometer and photon detectors

Jaroslav Adam

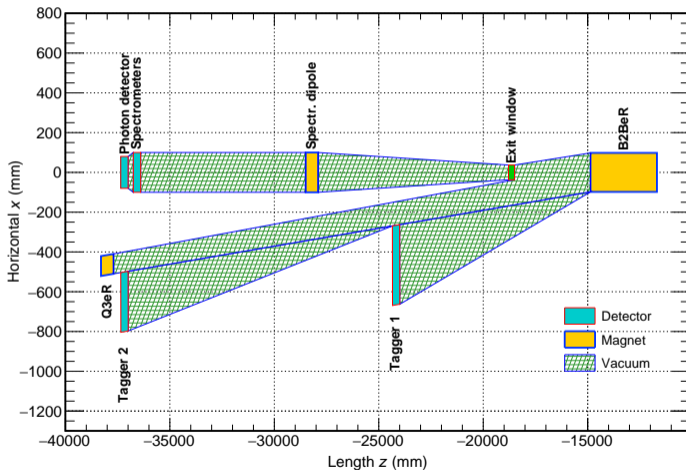
BNL

November 17, 2021

Far-backward meeting

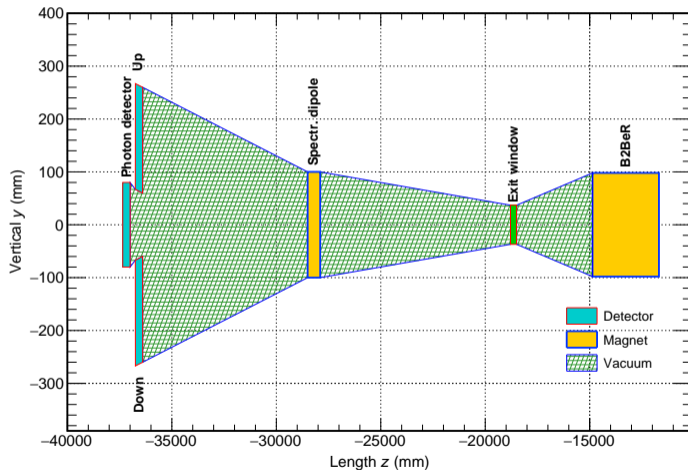
FB layout in xz plane

- Top view, horizontal x and length z



FB luminosity layout in yz plane

- Side view, vertical y and length z



Incident event rates on the front of detectors

- Particle counts are taken at the front of detectors after bremsstrahlung photons and conversion products (18x275 GeV) pass through exit window and spectrometer magnet
- Color scale gives incident rate in Hz per mm^2
- Total rate is 7.8 MHz on each spectrometer, 22.7 MHz on photon detector; bunch crossing rate is 22.7 MHz

Figure: Up spectrometer

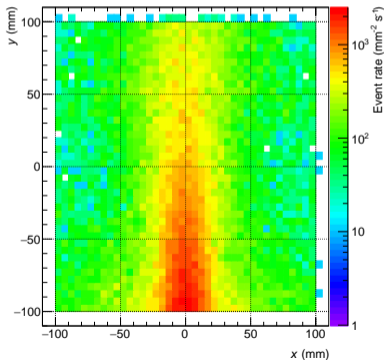


Figure: Down spectrometer

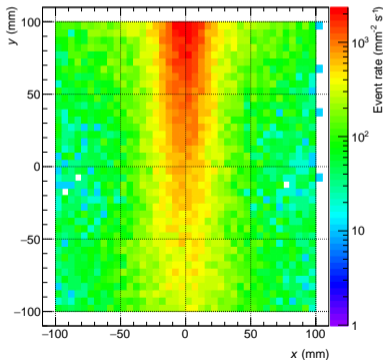
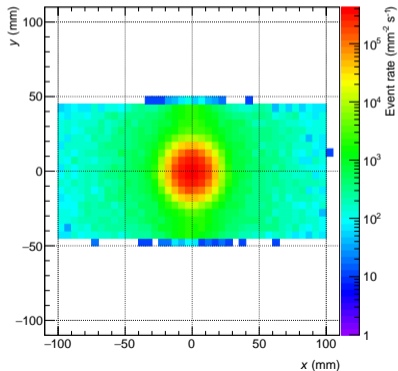


Figure: Photon detector



Incident energy in bunch crossing on the front of detectors

- Incident energy is summed for each bunch crossing, same setup as for the rates on the previous page

Figure: Up spectrometer

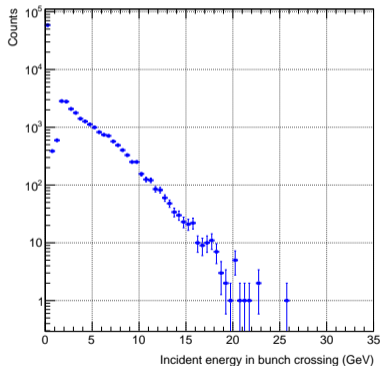


Figure: Down spectrometer

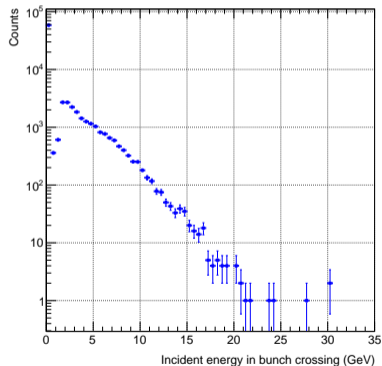


Figure: Photon detector

