

# Community Engagement Frontier (CEF)

<https://snowmass21.org/community/start>



Dr. Kétévi A. Assamagan  
(BNL)

# CEF — >100 LOI

## CEF CONVENERS

# CEF — 36 CP (Contributed Papers)

### CEF1 Applications & Industry (6 CP)



Farah Fahim  
Fermilab  
farah@fnal.gov



Alex Murokh  
Radiabeam  
murokh@radiabeam.com



Koji Yoshimura  
Okayama

### Frontier Conveners



Kétévi A. Assamagan (BNL)



Breese Quinn (Mississippi)

### CEF3 Diversity and Inclusion (9 CP)



Mu-Chun Chen  
(UCI)



Carla Bonifazi  
(UFRJ)



Yi-Hsuan C. Lin  
(SNOLAB)



Johan S. Bonilla  
(UC Davis)

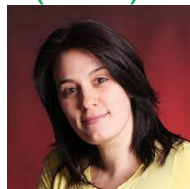
### CEF2 Career Pipeline & Development (4 CP)



Julie Hogan  
(Bethel Uni.)



Sudhir Malik  
(UPRM)



Aneliya Karadzhinova-Ferrer  
(Ruđer Bošković Institute)

### CEF6 Public Policy and Government Engagement (5 CP)



Rob Fine  
LANL  
[finer@fnal.gov](mailto:finer@fnal.gov)



Louise Suter  
Fermilab  
[lsuter@fnal.gov](mailto:lsuter@fnal.gov)



Brajesh Choudhary  
University of Delhi  
[brajesh@fnal.gov](mailto:brajesh@fnal.gov)

### CEF4 Physics Education (5 CP)



Randy Ruchti  
Notre Dame  
rruchti@nd.edu



Sudhir Malik  
UPRM  
sudhir.malik@upr.edu



Sijbrand de Jong  
Radboud University  
sijbrand@hef.ru.nl

### CEF7 Environmental & Societal Impacts (3 CP)



Veronique Boisvert  
(URAL)



Ken Bloom (UNL)



Mike Headley  
(SDSU/SURF/SDSTA)

### CEF5 Public Education and Outreach (4 CP)



Sarah Demers  
Yale University  
[sarah\\_demers@yale.edu](mailto:sarah_demers@yale.edu)



Kathryn Jepsen  
Symmetry Magazine  
[kjepsen@slac.stanford.edu](mailto:kjepsen@slac.stanford.edu)



Don Lincoln  
FNAL  
[lincoln@fnal.gov](mailto:lincoln@fnal.gov)



Azwinndini Muronga  
Nelson Mandela University  
[Azwinndini.Muronga@mandela.ac.za](mailto:Azwinndini.Muronga@mandela.ac.za)

# CEF Liaisons to other Frontiers

Frontier	Liaisons
Accelerator	Jeroen van Tilborg (LBL)
Computational	David Bruhwiler (RadiaSoft)
Cosmic	Sijbrand de Jong (Radboud)
Early Careers	Mateus Carneiro (BNL) Scott Kravitz (LBL)
Energy	Daniel Whiteson (UCI) Sergei Gleyzer (UA)
Instrumentation	Farah Fahim (FNAL)
Neutrino Physics	Claire Lee (FNAL)
Rare Processes & Precision	Sophie Middleton (Caltech)
Theory	Devin Walker (Dartmouth)
Underground Facilities	

# Snowmass Community Engagement Topical Groups

- ★ **CEF1 — Applications & Industry**
  - Develop and strengthen HEP/Industry relationships in both directions: form more partnerships to draw on industry expertise to further HEP goals, and build on programs to facilitate transfer of HEP technologies/techniques for use in the broader society.
- ★ **CEF2 — Career Pipeline & Development**
  - Not simply making young scientists aware of different opportunities, but also changing culture of HEP career paths
- ★ **CEF3 — Diversity & Inclusion**
  - Improve diversity, inclusion and equity in our field
- ★ **CEF4 — Physics Education**
  - Broader than simply how we teach physics courses. It is about what education and training our field needs to produce the physicists required for the HEP program to be successful (e.g. computational, beams, instrumentation; workshops, univ./lab/collaboration-level courses, etc.)
- ★ **CEF5 — Public Education & Outreach**
  - Work to see public education and engagement acknowledged as important work within our field, rewarded in the career paths of researchers, and integrated into our research practices such that it is a recognized component of what it means to be a physicist.
- ★ **CEF6 — Public Policy & Government Engagement**
  - Discuss all aspects of how the HEP community is impacted by public policy, and all aspects of how the community engages in advocacy.
- ★ **CEF7 — Environmental & Societal Impacts**
  - Impacts of HEP research on society and the environment

**These topics are cross-cutting through all the other frontiers**

# Over 100 LOI → 36 white papers

- **We condensed > 100 LOI into 36 white (contributed) paper topics**
  - **Focus now shifted towards contributed paper developments**
- **However, CEF has a serious shortage of person powers**
  - **Some white paper topics will not be developed to white papers**
- **3 white papers for which we have to solicit ghostwriters and pay**
  - **Meeting regularly with ghostwriters to define scope, content, and review drafts**
  - **Payment covered through an D&I grant**
  - **Ghostwriters are expensive — but these topics are also important**

# Snowmass report and CEF Recommendations

- **Snowmass report will feed into HEPAP/ P5, to develop recommendations / actionable items for funding agencies, for projects**
- **CEF is not about projects**
  - **What will happen to the CEF report / recommendations?**

# CEF and participation in other frontiers

- **Most of us in CEF are physicists too**
- **We have interests in other frontiers**
- **But severe shortage of community participation in CEF**
  - The few involved in CEF have to carry the frontier mandate and activities
  - Difficulty finding time to concentrate on physics activities of interests in other frontiers
  - Thanks to Alan Stone (DOE) to provide coverage for assistance—this has helped a bit

# Snowmass and COVID-19

- **CEF workshop**
  - May 24-26, 2022
  - Format: hybrid
  - Venue : UCI
- **Snowmass Community Summer Study**
  - July 17-27, 2022
  - Format: in-person
  - Venue: UWA, Seattle
- **Participation of frontier conveners and topical group conveners**
  - In-person to be effective. Virtual participation is not going to be impactful
- **Request: DOE/BNL to make participation in Snowmass workshops “Mission Critical”**



# DPF Ethics Advisory Committee

- **Inaugural members are (Nov 2020 - Oct 2022)**
  - Kétévi Assamagan, Bill Barletta, Melissa Franklin, Maria Elena Monzani, Pavel Fileviez Perez, Amber Roepe (early career: graduate student), Pekka Sinervo, Ruth Van de Water (chair), Jeremy Wolcott (early career: postdoc)
- **Mandate**
  - 2 years
- **Charge**
  - define ethics and code of conduct guidelines for DPF
  - Respond to violations
  - Advise DPF chairline
- **<https://snowmass21.org/cpcg/start>**

# Conclusions

- **The topics addressed in CEF are cross-cutting through all the other frontiers**
  - They affect all of us
  - Most would agree these topics are important
  - But most don't have time to work on them
  - Ultimately, CEF is carried by the few who really believe and are committed
  - Yet, we face an uncertain future—on implementation of CEF recommendations