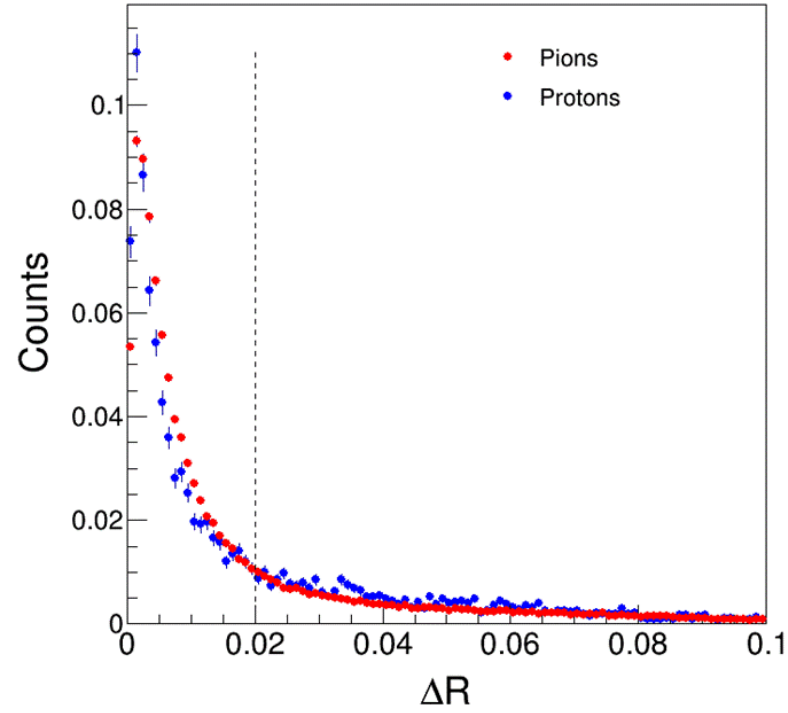
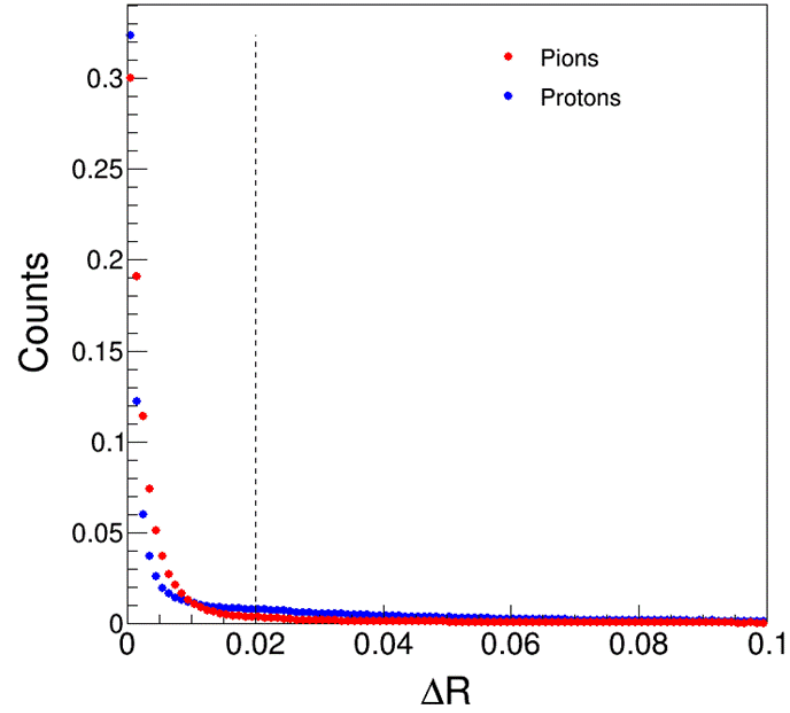


ΔR matching Gen to Reco

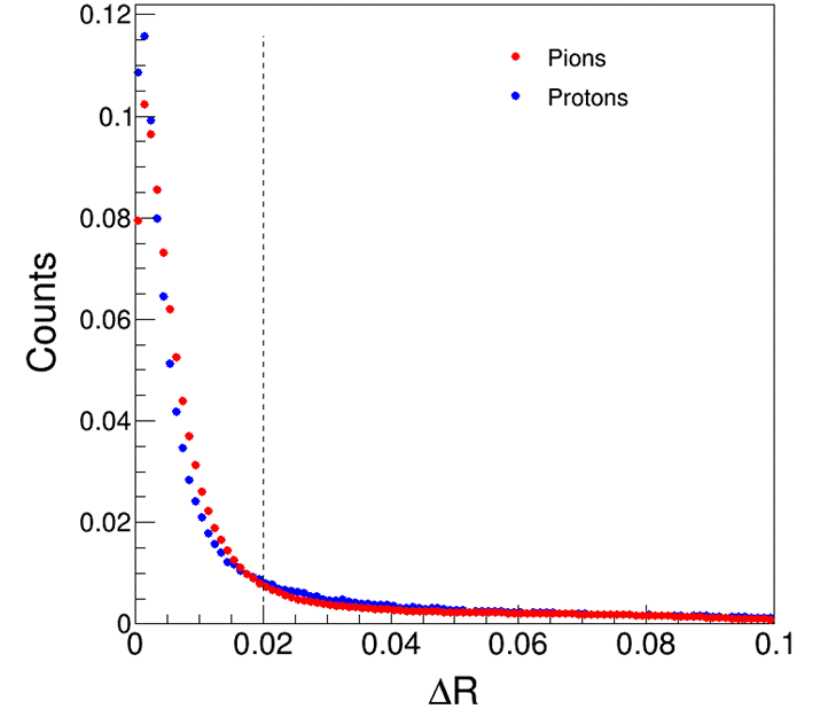
backward rapidity [-4.0,-2.0]



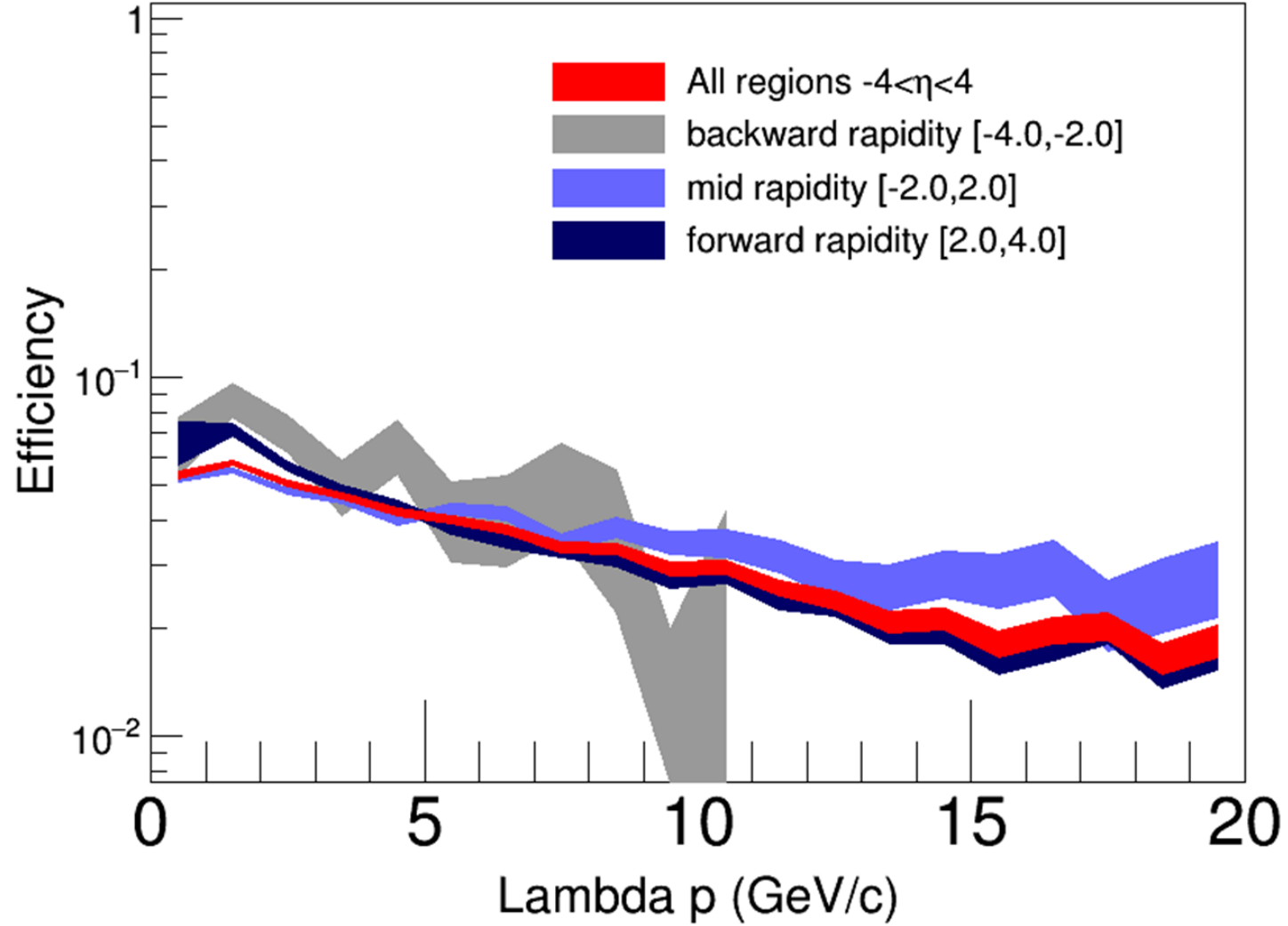
mid rapidity [-2.0,2.0]



forward rapidity [2.0,4.0]

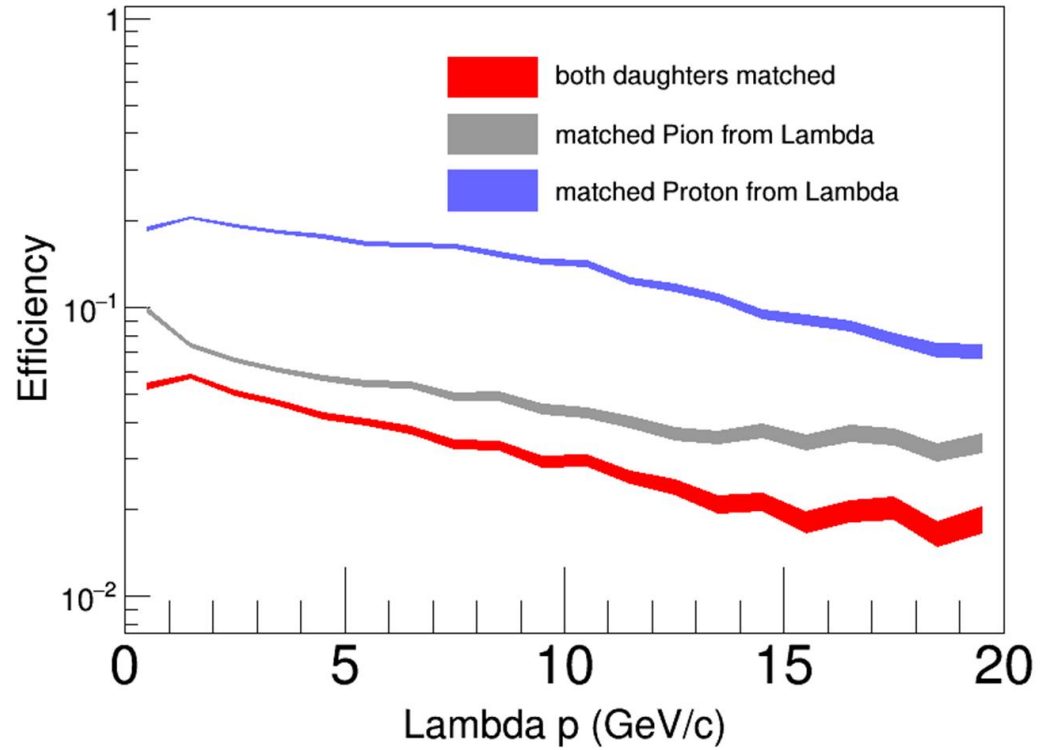


Lambda Reconstruction

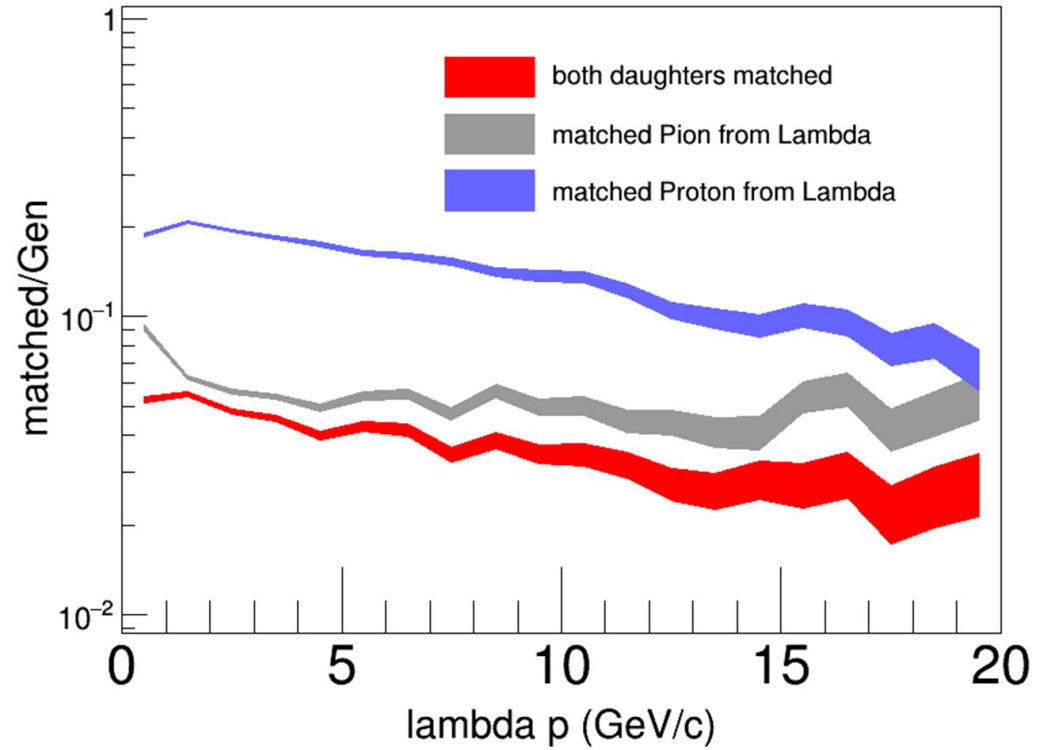


Lambda daughters' efficiency

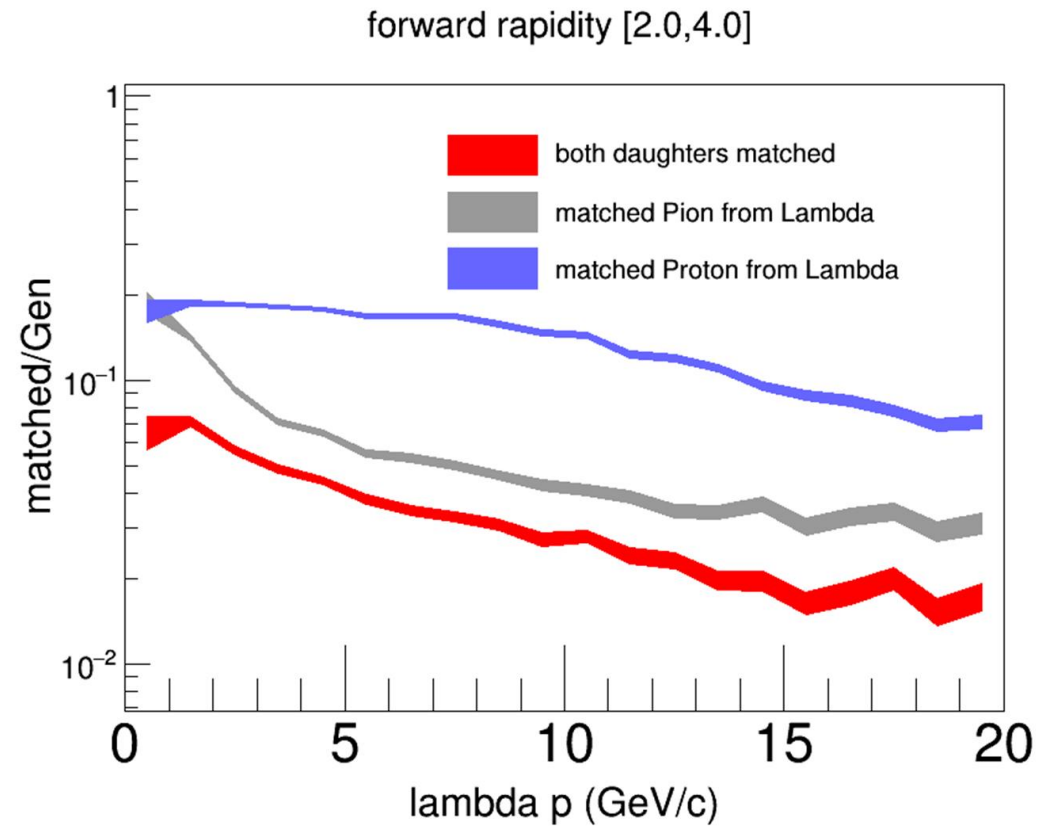
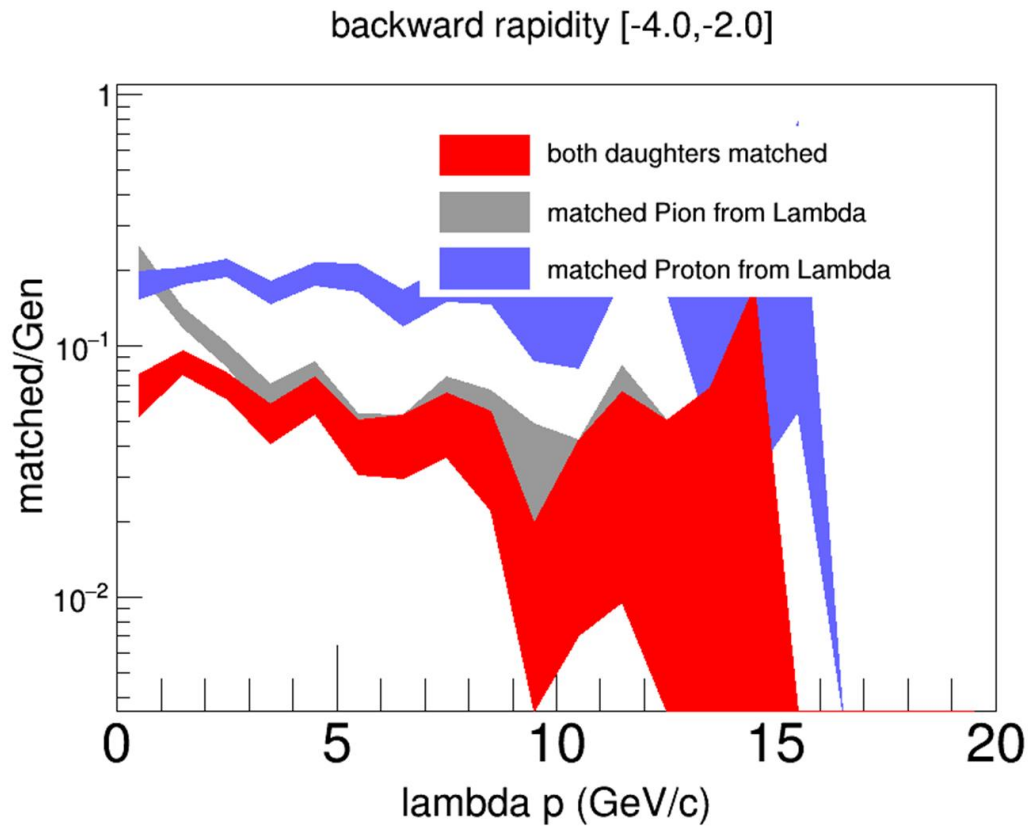
$-4 < \eta < 4$



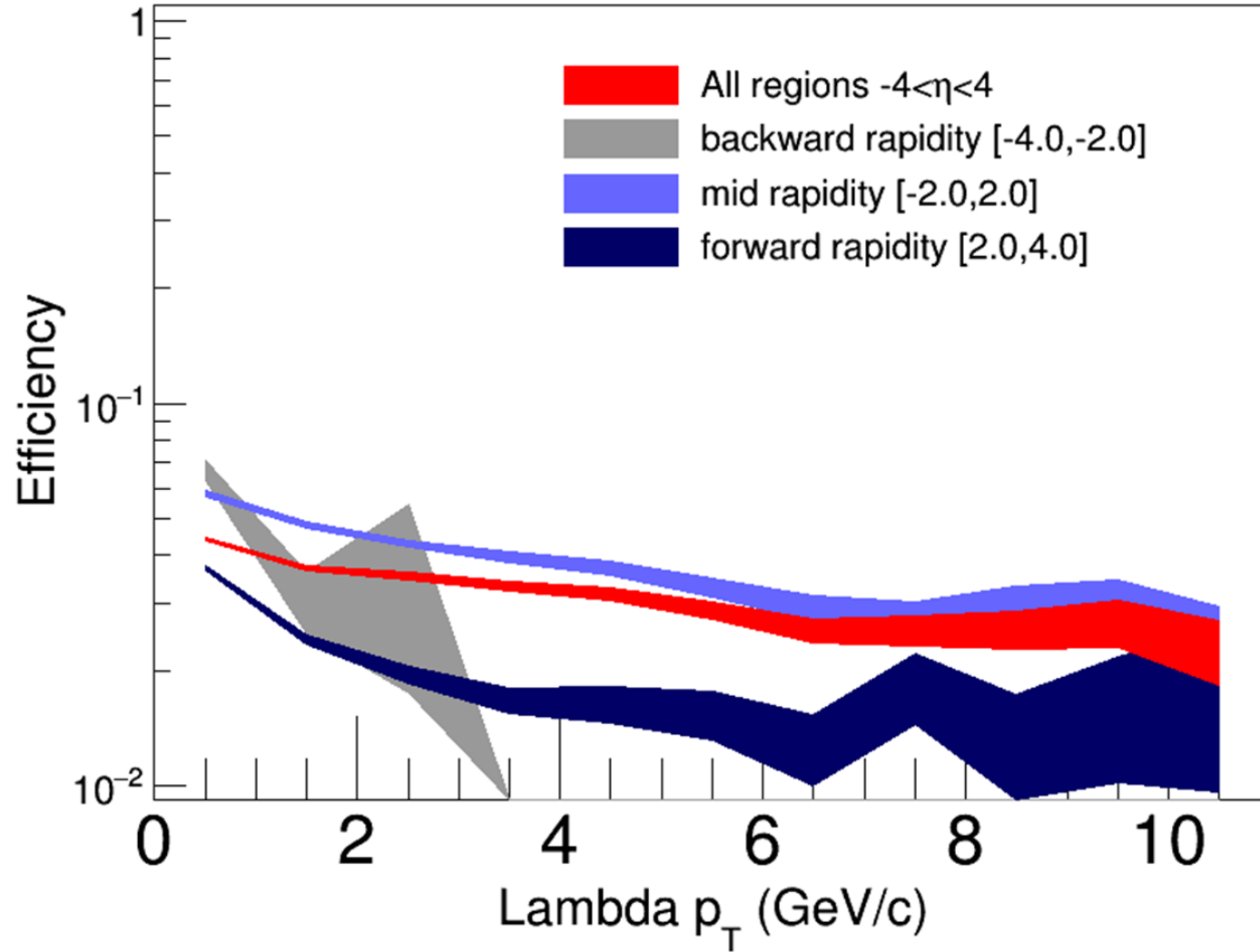
mid rapidity $[-2.0, 2.0]$



Lambda daughters' efficiency



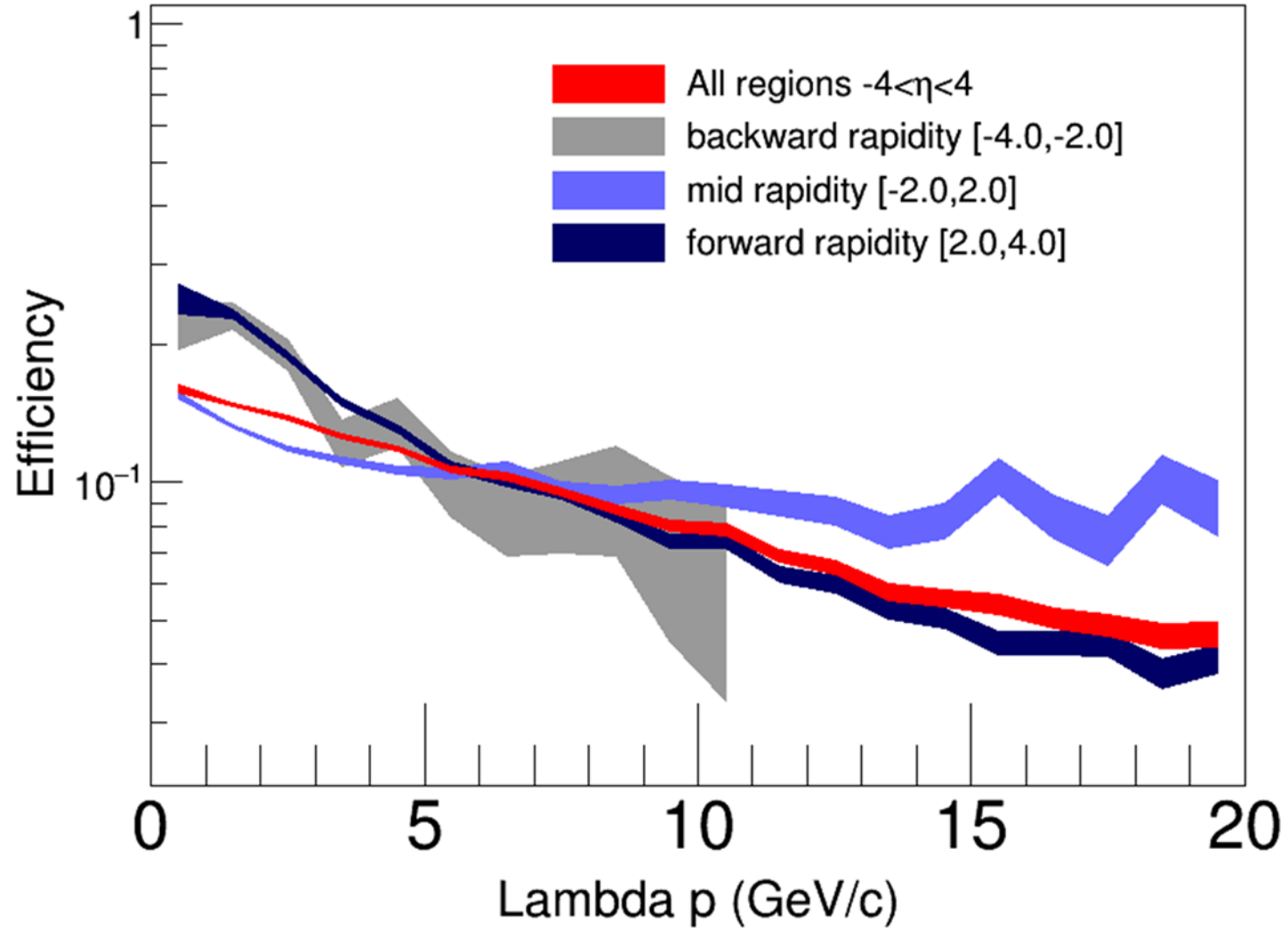
Lambda Reconstruction



Previous Results

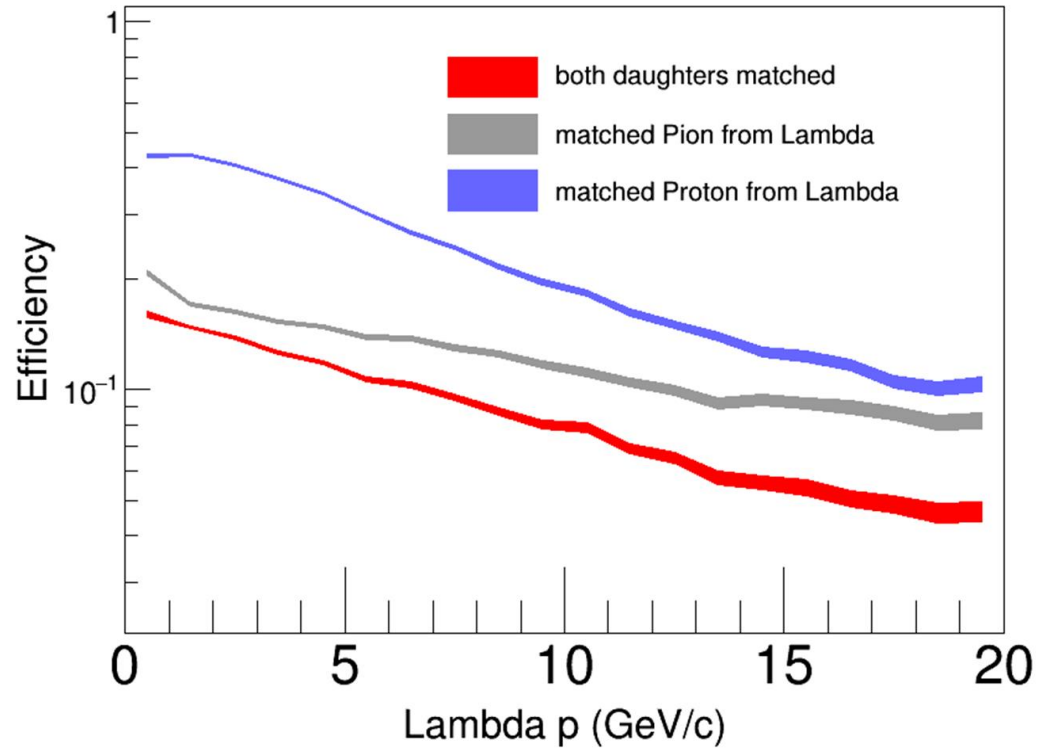
Considering a match each track with $\Delta R < 0.05$

Lambda Reconstruction

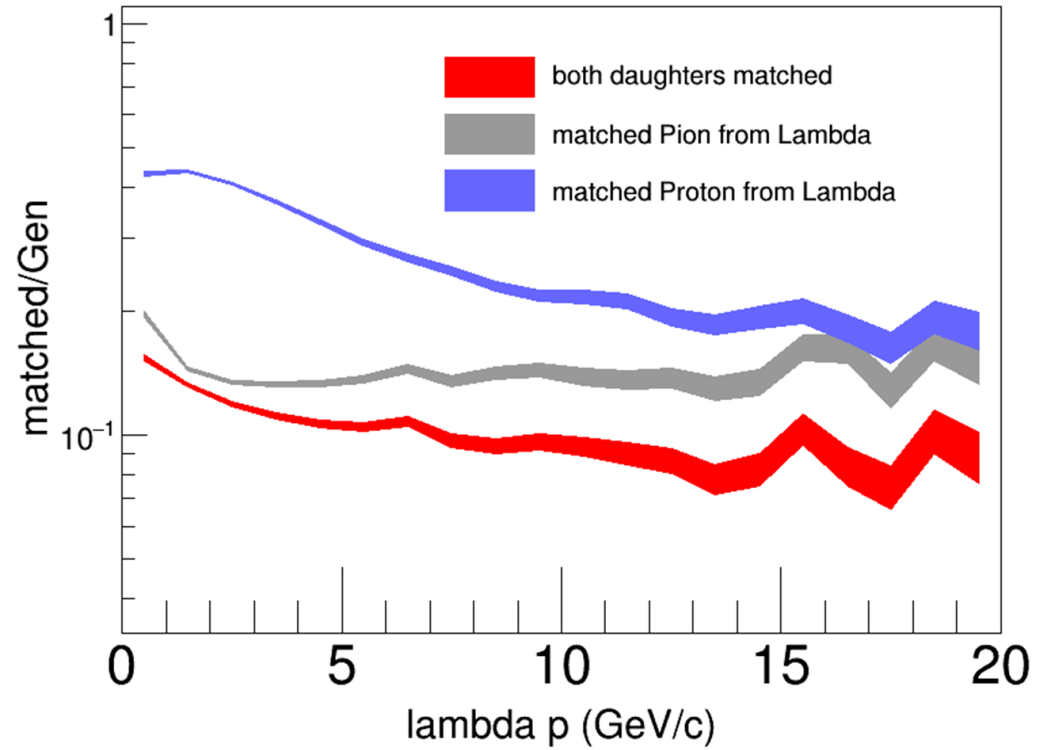


Lambda daughters' efficiency

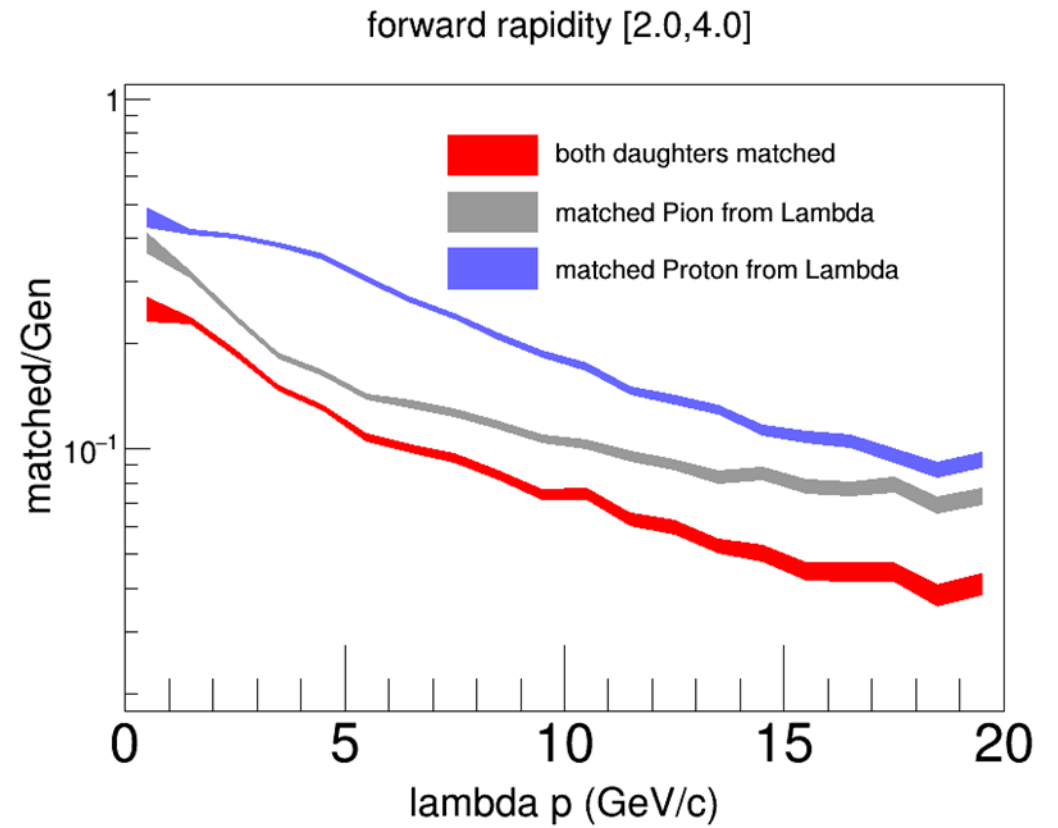
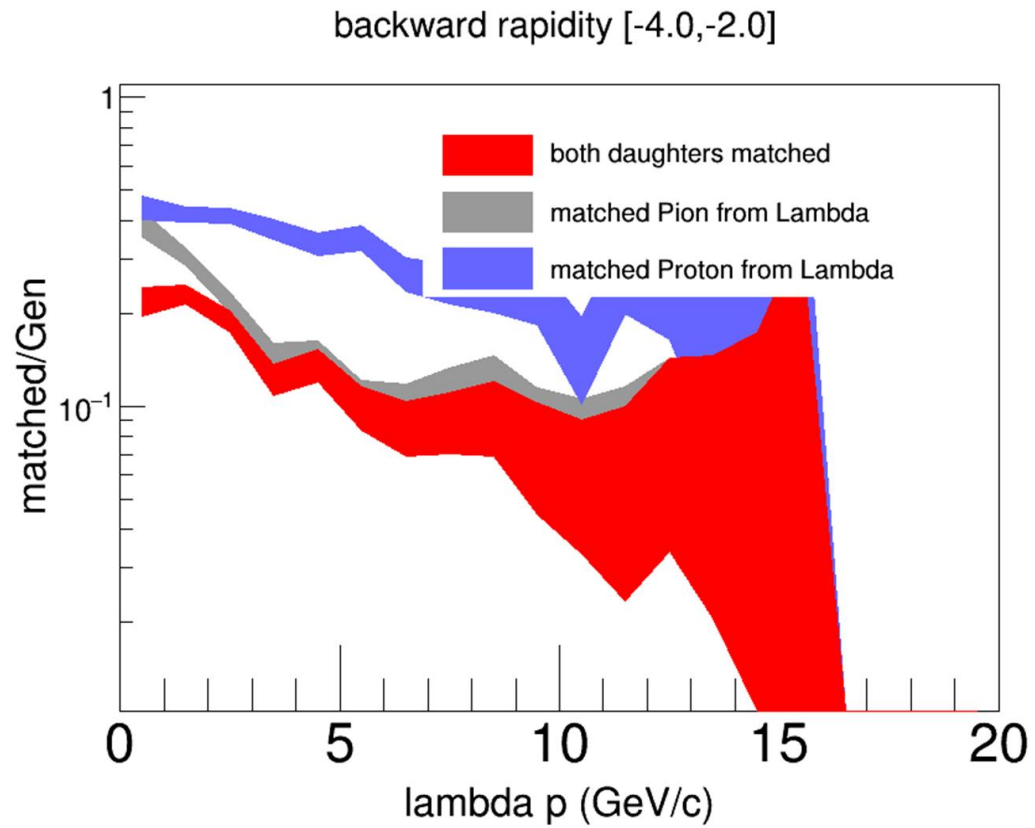
$-4 < \eta < 4$



mid rapidity [-2.0,2.0]



Lambda daughters' efficiency



Lambda Reconstruction

