

DETECTOR-1, GD/I WG

kick-off meeting

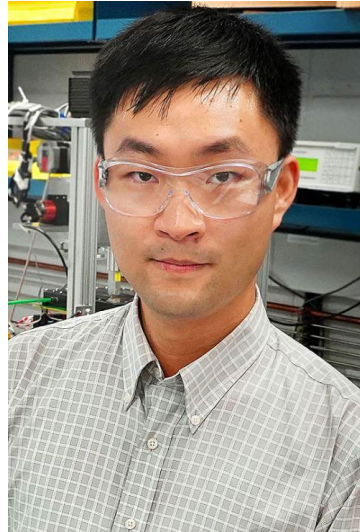
5/9/2022

DETECTOR-1, GD/I- conveners



Silvia DALLA TORRE

Silvia.dallatorre@ts.infn.it



Jin HUANG

jhuang@bnl.gov



Richard MILNER

milner@mit.edu



Thomas ULLRICH

thomas.ullrich@bnl.gov

DETECTOR-1, GD/I – about CHARGE

[...]

Your working group is fundamentally quite different from the joint detector and physics working groups that have been recently formed, in that we are asking your working group to take a broad view of the EIC project detector as it evolves to a technical design. The global charge to your WG is as follows:

- Work with the project and the joint working group to develop a detailed, integrated technical design of the project detector. This includes the integration of various detector systems, the necessary supports and services, and the requirements imposed by the ability to service the detector between EIC running periods.
- Work with the detector and physics working groups, as well as project management, to ensure that the integrated project detector remains capable of the full science program outlined in the EIC Whitepaper and NAS report. Where compromises need to be made in the integration of the project detector, ensure that the proper simulations studies are completed to ensure they do not unduly compromise the EIC science program.

[...]

DETECTOR-1, GD/I - logistics

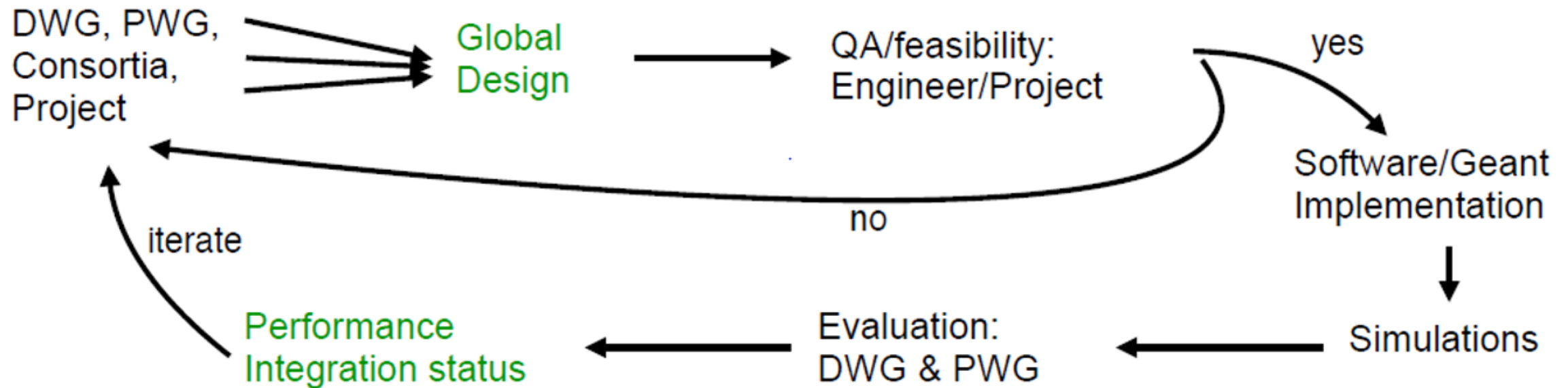
- Indico: <https://indico.bnl.gov/event/15540/>
- Mailing List: eic-projdet-globalint-1@lists.bnl.gov
- Wiki: <https://wiki.bnl.gov/eic-project-detector/index.php/GDI>

GD/I MEETINGS:

- **WEEKLY** ON Monday at 9.00am EST/EDT
- ~ 1.5 h open meeting
- ~0.5 h closed meeting for recap and next steps

DETECTOR-1, GD/I – how to progress

- Guide the global design and integration of Detector-1
 - ▶ Work closely with DWG, PWG, Consortia, Project, Engineers, Software Group
- Design Cycle:



- Representatives included in GDI meetings: Project (Elke) & SW/Sim
- Try to have at least one GDI convener to be present in every DWG meeting

DETECTOR-1, GD/I – input from the WG conveners

- **First of all, also from the GD/I WG conveners:
thank you for accepting to serve as WG conveners and for the
Great work we will do together**

**An obvious question: WG conveners again on the stage after 2 the first
CONVENER MEETING on last Friday, 5/6, why ?**

- **The perspective is different**
 - In fact:

Meeting Goal:

Facilitate direct communication

From the DETECTOR-1
Convener meeting on 5/6, 2022

You to us:

- Challenges you are facing and we can help with
- General feedback on how you feel the process is progressing

Us to you:

- Information from discussions withing leadership and/or with project, that is important for your work
- Observations we make on the WG discussion / progress that require discussion

You to each others:

- Forum for WG conveners to discuss with each other on aspects that are common to all (e.g. simulations etc.)

DETECTOR-1, GD/I – input from the WG conveners

GD/I WG, for its scopes, needs

- Needs to closely work with [DWG](#), [PWG](#), Consortia, Project, Engineers, Software Group
- **Need of your input:** if you recognize issues concerning the overall design/ infrastructure that affect integration and performance please let us know
- **Important:** at least a convener from each WG attending our GD/I meetings

TODAY Charge (as specified in the invitation e-mail)

- D-WG conveners:
 - to report after their kick-off and first meetings of their WGs, to underline the main urgency and arising issues
- WG conveners
 - to provide suggestions to or requests of support from the GD/I WG conveners, when they see the need to contribute in the discussion session

DETECTOR-1, GD/I – a hint about progressing with our work

Preliminary news about the agendas of the following meetings (to be confirmed)

Monday 5/16

- 2 long talks (~ 30min followed by 15 min discussion for each talk) about the choices behind the global design of ECCE and ATHENA for general information

Monday 5/23

- a talk about the BaBar magnet to start learning about it (field characteristics, material budget, homogeneity, projectivity, what is needed for the flux return, ...)
- inputs from the project engineers