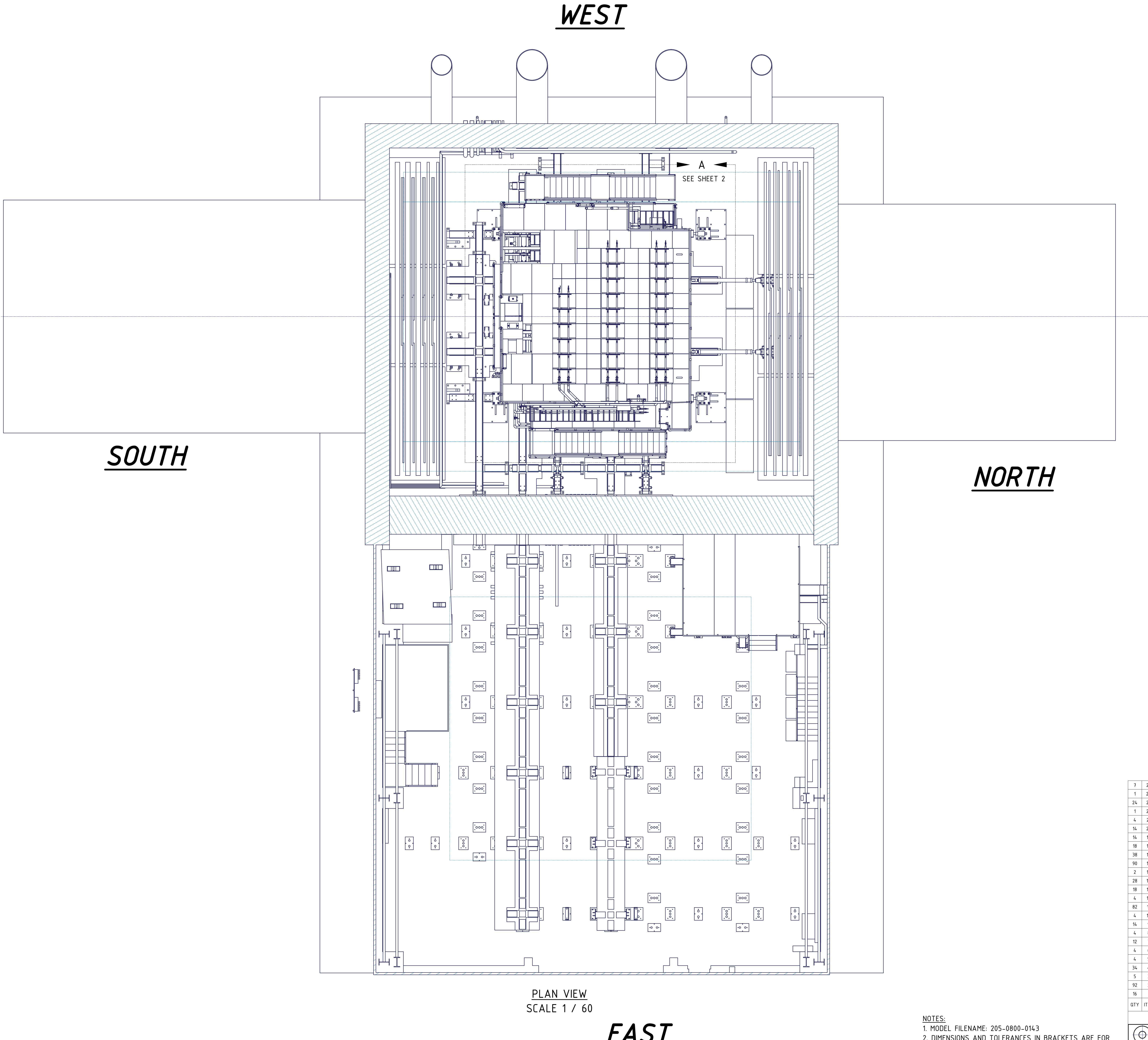


REVISION HISTORY				1	
REV	ECN NUMBER	ZONE	DESCRIPTION	DATE	APPROVED
				4/26/2021	



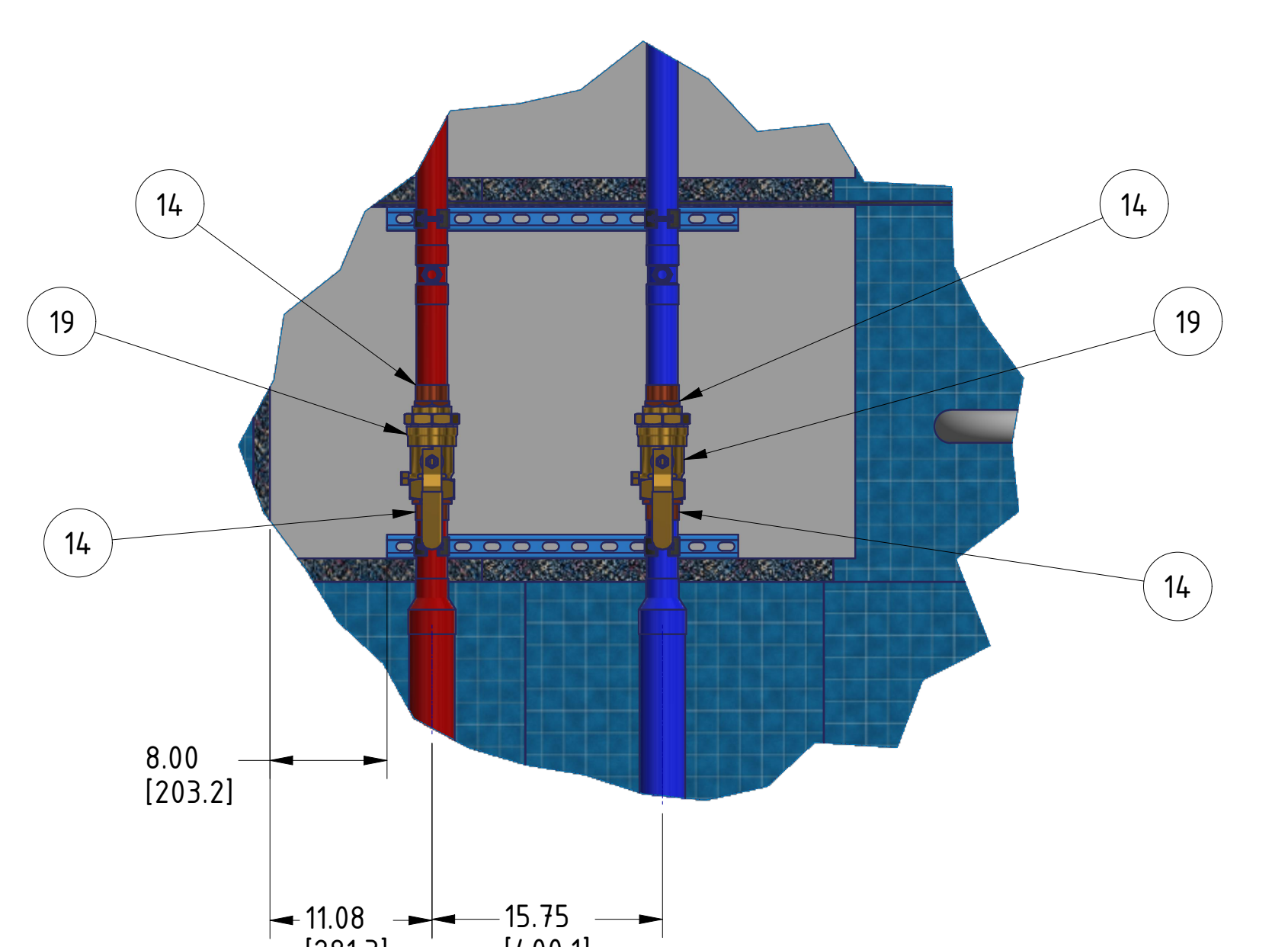
PLAN VIEW  
SCALE 1 / 60

- NOTES:
1. MODEL FILENAME: 205-0800-0143
  2. DIMENSIONS AND TOLERANCES IN BRACKETS ARE FOR REFERENCE ONLY

7	25	P1000T-HG	STRUT CHANNEL - 10"	UNISTRUT
1	24	P1001-10-HG	STRUT CHANNEL, BACK TO BACK - 10"	UNISTRUT
24	23	50475K96	COPPER TUBING 3" - 10"	MCMaster CARR
1	22	50475K91	COPPER TUBING 1" - 10"	MCMaster CARR
4	21	50475K18	COPPER TUBING 1 1/2" - 10"	MCMaster CARR
14	20	5520K306	STRAIGHT REDUCER, CONNECTOR, SOLDER 2" X 1"	MCMaster CARR
14	19	1238N17	BALL VALVE 2" NPT FEMALE X 2" NPT FEMALE	MCMaster CARR
18	18	47865K25	BALL VALVE 1" NPT FEMALE X 1" NPT FEMALE	MCMaster CARR
38	17	47865K44	BALL VALVE 3/4" NPT FEMALE X 3/4" NPT MALE	MCMaster CARR
90	16	5520K254	ADAPTER 3/4" DIA MALE X 3/4" NPT FEMALE	MCMaster CARR
2	15	5520K171	ADAPTER 3" DIA FEMALE X 3" NPT MALE	MCMaster CARR
28	14	5520K16	ADAPTER 2" DIA FEMALE X 2" NPT MALE	MCMaster CARR
18	13	5520K13	ADAPTER 1" DIA FEMALE X 1" NPT MALE	MCMaster CARR
4	12	5520K508	ADAPTER 3/4" DIA FEMALE X 1" NPT MALE	MCMaster CARR
82	11	5520K136	INLINE TEE REDUCER, CONNECTOR, SOLDER 2" X 3/4"	MCMaster CARR
4	10	5520K304	STRAIGHT REDUCER, CONNECTOR, SOLDER 1 1/2" X 1"	MCMaster CARR
14	9	5520K149	STRAIGHT REDUCER, CONNECTOR, SOLDER 3" X 2"	MCMaster CARR
4	8	5520K359	TEE CONNECTOR, SOLDER 3"x3"x 1 1/2"	MCMaster CARR
12	7	5520K835	TEE CONNECTOR, SOLDER 3"	MCMaster CARR
4	6	5520K72	TEE CONNECTOR, SOLDER 3/4"	MCMaster CARR
4	5	5520K829	ELBOW 45 DEGREE, CONNECTOR, SOLDER 3"	MCMaster CARR
34	4	5520K82	ELBOW, 90 DEGREE, CONNECTOR, SOLDER 3"	MCMaster CARR
5	3	33145T290	STRUT CHANNEL FLOOR MOUNT	MCMaster CARR
92	2	3115T86	STRUT-MOUNT PIPE CLAMP, 2"	MCMaster CARR
16	1	3115T22	STRUT-MOUNT PIPE CLAMP, 3"	MCMaster CARR

BILL OF MATERIALS			
QTY	ITEM	PART NUMBER	DESCRIPTION
MATERIAL			
BILL OF MATERIALS			
BROOKHAVEN NATIONAL LABORATORY BROOKHAVEN SCIENCE ASSOCIATES UPTON, NY 11973			
sPHENIX, ELECTRONIC COOLING WATER			
ON CARRIAGE RACK COOLING WATER INSTALLATION			
205-0800-0143			
A			

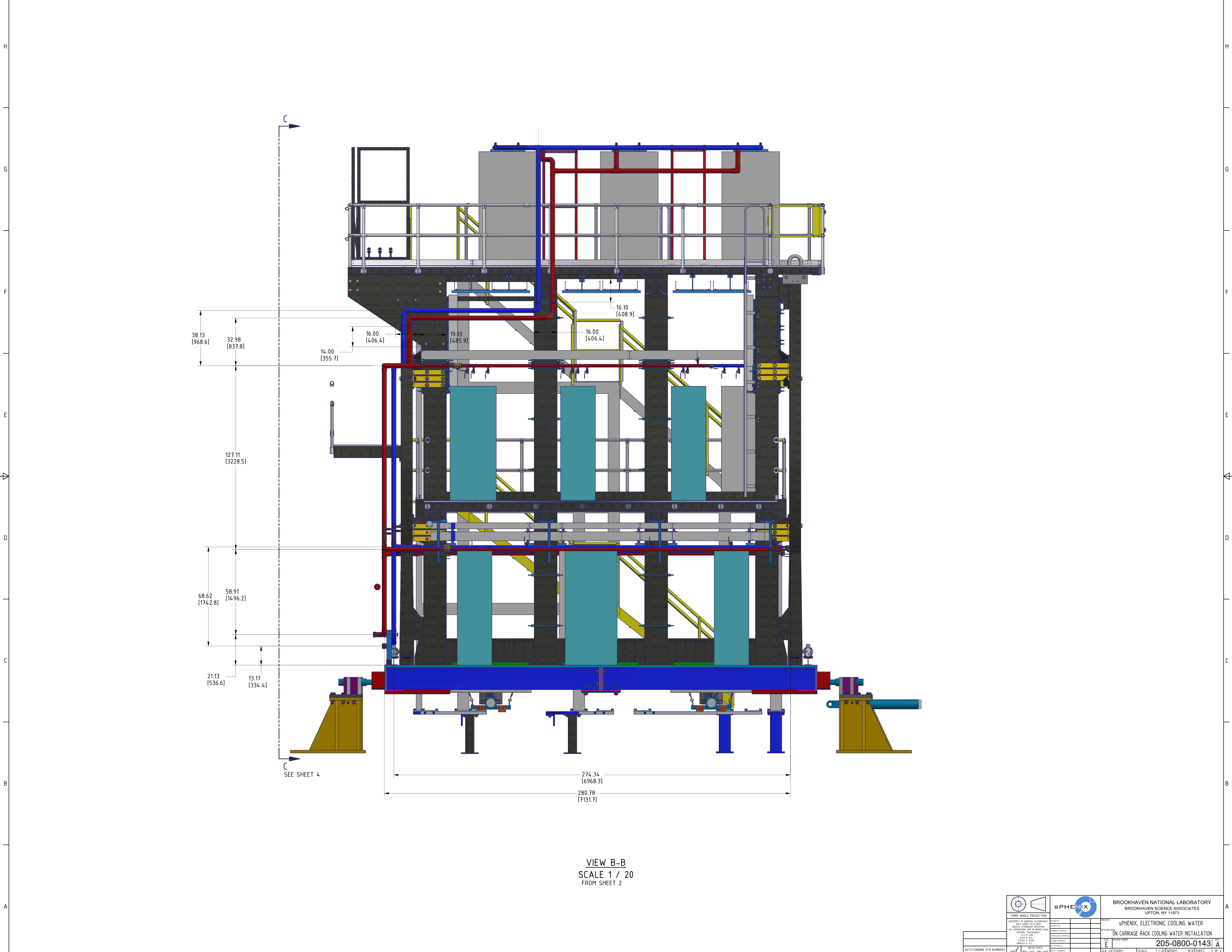




DETAIL F  
SCALE 1 / 10

<div><div><div><div><div></div><div></div></div><div><div></div><div></div></div></div><div><div><div></div><div></div></div><div><div></div><div></div></div></div></div></div>	<div><div><div><div></div><div></div></div><div><div></div><div></div></div></div><div><div><div></div><div></div></div><div><div></div><div></div></div></div></div>	BROOKHAVEN NATIONAL LABORATORY BROOKHAVEN SCIENCE ASSOCIATES UPTON, NY 11973	
		SPHENIX, ELECTRONIC COOLING WATER ON CARRIAGE RACK COOLING WATER INSTALLATION	
UNIFORM IN GENERAL, ALCOHOLIC 100% ETHYL ALCOHOL UNLESS OTHERWISE SPECIFIED ALL DIMENSIONS ARE IN INCHES UNLESS OTHERWISE SPECIFIED 1/2" x 1/2" 1/4" x 1/4" 1/8" x 1/8" 1/16" x 1/16" 1/32" x 1/32" 1/64" x 1/64" 1/128" x 1/128" 1/256" x 1/256" 1/512" x 1/512" 1/1024" x 1/1024" 1/2048" x 1/2048" 1/4096" x 1/4096" 1/8192" x 1/8192" 1/16384" x 1/16384" 1/32768" x 1/32768" 1/65536" x 1/65536" 1/131072" x 1/131072" 1/262144" x 1/262144" 1/524288" x 1/524288" 1/1048576" x 1/1048576" 1/2097152" x 1/2097152" 1/4194304" x 1/4194304" 1/8388608" x 1/8388608" 1/16777216" x 1/16777216" 1/33554432" x 1/33554432" 1/67108864" x 1/67108864" 1/134217728" x 1/134217728" 1/268435456" x 1/268435456" 1/536870912" x 1/536870912" 1/1073741824" x 1/1073741824" 1/2147483648" x 1/2147483648" 1/4294967296" x 1/4294967296" 1/8589934592" x 1/8589934592" 1/17179869184" x 1/17179869184" 1/34359738368" x 1/34359738368" 1/68719476736" x 1/68719476736" 1/137438953472" x 1/137438953472" 1/274877906944" x 1/274877906944" 1/549755813888" x 1/549755813888" 1/1099511627776" x 1/1099511627776" 1/2199023255552" x 1/2199023255552" 1/4398046511104" x 1/4398046511104" 1/8796093022208" x 1/8796093022208" 1/17592186044416" x 1/17592186044416" 1/35184372088832" x 1/35184372088832" 1/70368744177664" x 1/70368744177664" 1/140737488355328" x 1/140737488355328" 1/281474976710656" x 1/281474976710656" 1/562949953421312" x 1/562949953421312" 1/1125899906842624" x 1/1125899906842624" 1/2251799813685248" x 1/2251799813685248" 1/4503599627370496" x 1/4503599627370496" 1/9007199254740992" x 1/9007199254740992" 1/18014398509481984" x 1/18014398509481984" 1/36028797018963968" x 1/36028797018963968" 1/72057594037927936" x 1/72057594037927936" 1/144115188075855872" x 1/144115188075855872" 1/288230376151711744" x 1/288230376151711744" 1/576460752303423488" x 1/576460752303423488" 1/1152921504606846976" x 1/1152921504606846976" 1/2305843009213693952" x 1/2305843009213693952" 1/4611686018427387904" x 1/4611686018427387904" 1/9223372036854775808" x 1/9223372036854775808" 1/18446744073709551616" x 1/18446744073709551616" 1/36893488147419103232" x 1/36893488147419103232" 1/73786976294838206464" x 1/73786976294838206464" 1/147573952589676412928" x 1/147573952589676412928" 1/295147905179352825856" x 1/295147905179352825856" 1/590295810358705651712" x 1/590295810358705651712" 1/1180591620717411303424" x 1/1180591620717411303424" 1/2361183241434822606848" x 1/2361183241434822606848" 1/4722366482869645213696" x 1/4722366482869645213696" 1/9444732965739290427392" x 1/9444732965739290427392" 1/18889465931478580854784" x 1/18889465931478580854784" 1/37778931862957161709568" x 1/37778931862957161709568" 1/75557863725914323419136" x 1/75557863725914323419136" 1/151115727451828646838272" x 1/151115727451828646838272" 1/302231454903657293676544" x 1/302231454903657293676544" 1/604462909807314587353088" x 1/604462909807314587353088" 1/1208925819614629174706176" x 1/1208925819614629174706176" 1/2417851639229258349412352" x 1/2417851639229258349412352" 1/4835703278458516698824704" x 1/4835703278458516698824704" 1/9671406556917033397649408" x 1/9671406556917033397649408" 1/19342813113834066795298816" x 1/19342813113834066795298816" 1/38685626227668133590597632" x 1/38685626227668133590597632" 1/77371252455336267181195264" x 1/77371252455336267181195264" 1/154742504910672534362390528" x 1/154742504910672534362390528" 1/309485009821345068724781056" x 1/309485009821345068724781056" 1/618970019642690137449562112" x 1/618970019642690137449562112" 1/1237940039285380274899124224" x 1/1237940039285380274899124224" 1/2475880078570760549798248448" x 1/2475880078570760549798248448"			







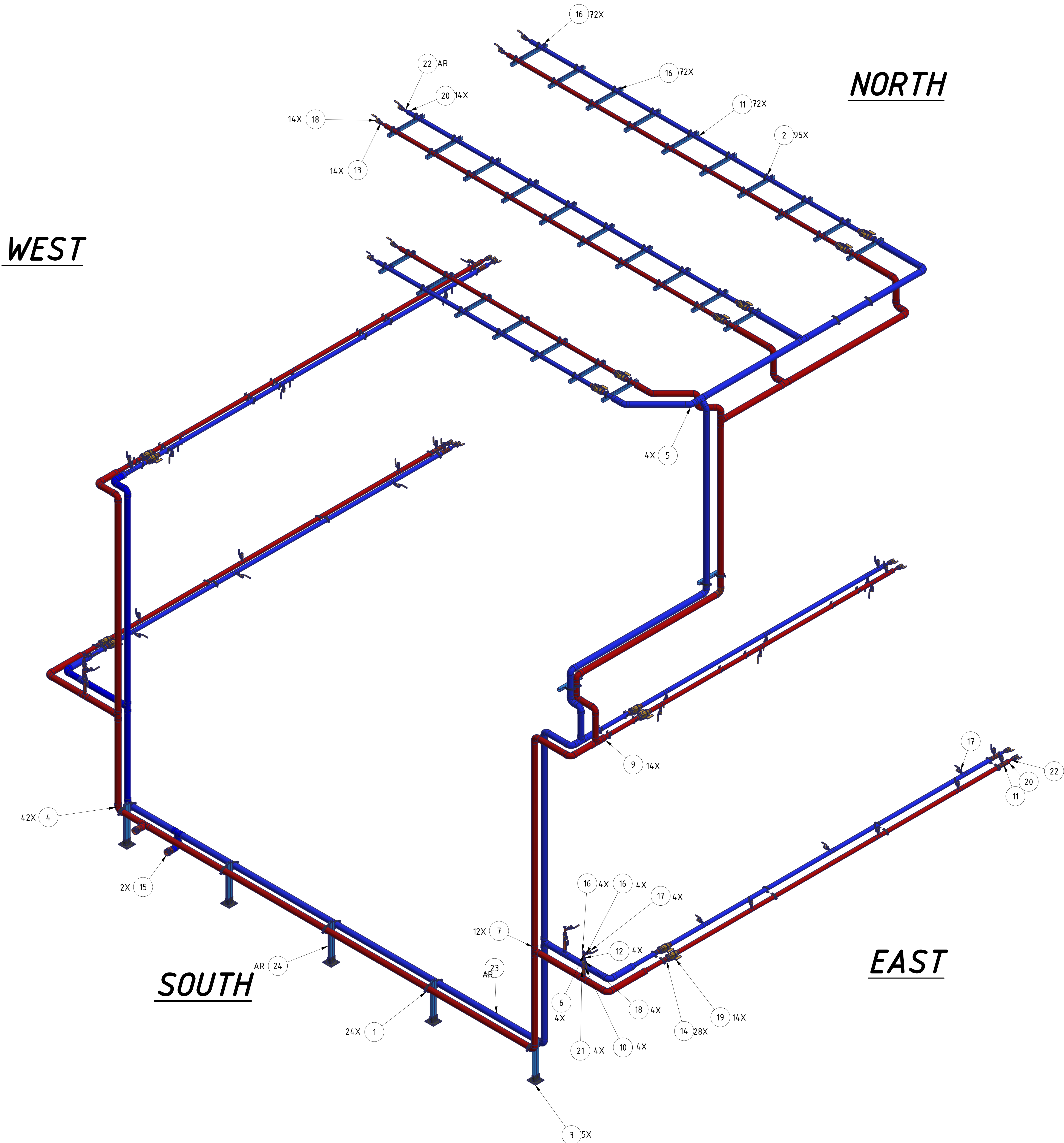






ALL UNITS TO BE SUBMITTED TO THE FOLLOWING: (HSE) (ECMA) 105/ANCES XX @ 85 XXX @ 80 XXXX @ 80% ANGLES @ 85		ENGINEER APPROVAL: SUPERVISOR APPROVAL: S.A. APPROVAL:		DESCRIPTION ON CARRIAGE RACK COOLING WATER INSTALLATION	
OUTSTANDING ECN NUMBERS		SIZE: <b>E</b>		DRAWING NUMBER: <b>205-0800-0143</b>	
FINISH: <input checked="" type="checkbox"/> BREAK EDGES: MAX. 0.015 MIN. 0.005		SAFETY ENGINEER		Q.A. CATEGORY: SCALE: 1 / 20 WEIGHT: N/A SHEET: 5 OF 6	





ISO VIEW  
SCALE 1 / 20

				BROOKHAVEN NATIONAL LABORATORY BROOKHAVEN SCIENCE ASSOCIATES UPTON, NY 11973	
THIRD ANGLE PROJECTION INTERPRET IN GENERAL ACCORDANCE WITH ASME Y14.3-2003 UNLESS OTHERWISE SPECIFIED ALL DIMENSIONS ARE IN INCHES DECIMAL FRACTIONS X.XX = 1/32 X.XXX = 1/64 X.XXXX = 1/128 X.XXXXX = 1/256 X.XXXXXX = 1/512 X.XXXXXXX = 1/1024 X.XXXXXXX = 1/2048 X.XXXXXXX = 1/4096 X.XXXXXXX = 1/8192 X.XXXXXXX = 1/16384 X.XXXXXXX = 1/32768 X.XXXXXXX = 1/65536 X.XXXXXXX = 1/131072 X.XXXXXXX = 1/262144 X.XXXXXXX = 1/524288 X.XXXXXXX = 1/1048576 X.XXXXXXX = 1/2097152 X.XXXXXXX = 1/4194304 X.XXXXXXX = 1/8388608 X.XXXXXXX = 1/16777216 X.XXXXXXX = 1/33554432 X.XXXXXXX = 1/67108864 X.XXXXXXX = 1/134217728 X.XXXXXXX = 1/268435456 X.XXXXXXX = 1/536870912 X.XXXXXXX = 1/1073741824 X.XXXXXXX = 1/2147483648 X.XXXXXXX = 1/4294967296 X.XXXXXXX = 1/8589934592 X.XXXXXXX = 1/17179869184 X.XXXXXXX = 1/34359738368 X.XXXXXXX = 1/68719476736 X.XXXXXXX = 1/137438953472 X.XXXXXXX = 1/274877906944 X.XXXXXXX = 1/549755813888 X.XXXXXXX = 1/1099511627776 X.XXXXXXX = 1/2199023255552 X.XXXXXXX = 1/4398046511104 X.XXXXXXX = 1/8796093022208 X.XXXXXXX = 1/17592186044416 X.XXXXXXX = 1/35184372088832 X.XXXXXXX = 1/70368744177664 X.XXXXXXX = 1/140737488355328 X.XXXXXXX = 1/281474976710656 X.XXXXXXX = 1/562949953421312 X.XXXXXXX = 1/1125899906842624 X.XXXXXXX = 1/2251799813685248 X.XXXXXXX = 1/4503599627370496 X.XXXXXXX = 1/9007199254740992 X.XXXXXXX = 1/18014398509481984 X.XXXXXXX = 1/36028797018963968 X.XXXXXXX = 1/72057594037927936 X.XXXXXXX = 1/144115188075855872 X.XXXXXXX = 1/288230376151711744 X.XXXXXXX = 1/576460752303423488 X.XXXXXXX = 1/1152921504606846976 X.XXXXXXX = 1/2305843009213693952 X.XXXXXXX = 1/4611686018427387904 X.XXXXXXX = 1/9223372036854775808 X.XXXXXXX = 1/18446744073709551616 X.XXXXXXX = 1/36893488147419103232 X.XXXXXXX = 1/73786976294838206464 X.XXXXXXX = 1/147573952589676412928 X.XXXXXXX = 1/295147905179352825856 X.XXXXXXX = 1/590295810358705651712 X.XXXXXXX = 1/1180591620717411303424 X.XXXXXXX = 1/2361183241434822606848 X.XXXXXXX = 1/4722366482869645213696 X.XXXXXXX = 1/9444732965739290427392 X.XXXXXXX = 1/18889465931478580854784 X.XXXXXXX = 1/37778931862957161709568 X.XXXXXXX = 1/75557863725914323419136 X.XXXXXXX = 1/151115727451828646838272 X.XXXXXXX = 1/302231454903657293676544 X.XXXXXXX = 1/604462909807314587353088 X.XXXXXXX = 1/1208925819614629174706176 X.XXXXXXX = 1/2417851639229258349412352 X.XXXXXXX = 1/4835703278458516698824704 X.XXXXXXX = 1/9671406556917033397649408 X.XXXXXXX = 1/19342813113834066795298816 X.XXXXXXX = 1/38685626227668133590597632 X.XXXXXXX = 1/77371252455336267181195264 X.XXXXXXX = 1/154742504910672534362390528 X.XXXXXXX = 1/309485009821345068724781056 X.XXXXXXX = 1/618970019642690137449562112 X.XXXXXXX = 1/1237940039285380274899124224 X.XXXXXXX = 1/2475880078570760549798248448 X.XXXXXXX = 1/4951760157141521099596496896 X.XXXXXXX = 1/9903520314283042199192993792 X.XXXXXXX = 1/19807040628566084398385987584 X.XXXXXXX = 1/39614081257132168796771975168 X.XXXXXXX = 1/79228162514264337593543950336 X.XXXXXXX = 1/158456325028528675187087900672 X.XXXXXXX = 1/316912650057057350374175801344 X.XXXXXXX = 1/633825300114114700748351602688 X.XXXXXXX = 1/1267650600228229401496703205376 X.XXXXXXX = 1/2535301200456458802993406410752 X.XXXXXXX = 1/5070602400912917605986812821504 X.XXXXXXX = 1/10141204801825835211973625643008 X.XXXXXXX = 1/20282409603651670423947251286016 X.XXXXXXX = 1/40564819207303340847894502572032 X.XXXXXXX = 1/81129638414606681695789005144064 X.XXXXXXX = 1/162259276829213363391578010288128 X.XXXXXXX = 1/324518553658426726783156020576256 X.XXXXXXX = 1/649037107316853453566312041152512 X.XXXXXXX = 1/1298074214633706907132624082305024 X.XXXXXXX = 1/2596148429267413814265248164610048 X.XXXXXXX = 1/5192296858534827628530496329220096 X.XXXXXXX = 1/10384593717069655257060992658440192 X.XXXXXXX = 1/20769187434139310514121985316880384 X.XXXXXXX = 1/41538374868278621028243970633760768 X.XXXXXXX = 1/83076749736557242056487941267521536 X.XXXXXXX = 1/166153499473114484112975882535043072 X.XXXXXXX = 1/332306998946228968225951765070086144 X.XXXXXXX = 1/664613997892457936451903530140172288 X.XXXXXXX = 1/1329227995784915872903807060280344576 X.XXXXXXX = 1/2658455991569831745807614120560689152 X.XXXXXXX = 1/5316911983139663491615228241121378304 X.XXXXXXX = 1/10633823966279326983230456482242756608 X.XXXXXXX = 1/21267647932558653966460912964485513216 X.XXXXXXX = 1/42535295865117307932921825928971026432 X.XXXXXXX = 1/85070591730234615865843651857942052864 X.XXXXXXX = 1/170141183460469231731687303715884105728 X.XXXXXXX = 1/340282366920938463463374607431768211456 X.XXXXXXX = 1/680564733841876926926749214863536422912 X.XXXXXXX = 1/1361129467683753853853498429727072845824 X.XXXXXXX = 1/2722258935367507707706996859454145691648 X.XXXXXXX = 1/5444517870735015415413993718908291383296 X.XXXXXXX = 1/10889035741470030830827987437816582766592 X.XXXXXXX = 1/21778071482940061661655974875633165533184 X.XXXXXXX = 1/43556142965880123323311949751266331066368 X.XXXXXXX = 1/87112285931760246646623899502532662132736 X.XXXXXXX = 1/174224571863520493293247799005065324265472 X.XXXXXXX = 1/348449143727040986586495598010130648530944 X.XXXXXXX = 1/696898287454081973172991196020261297061888 X.XXXXXXX = 1/1393796574908163946345982392040522594123776 X.XXXXXXX = 1/2787593149816327892691964784081045188247552 X.XXXXXXX = 1/5575186299632655785383929568162090376495104 X.XXXXXXX = 1/11150372599265311570767859136324180752990208 X.XXXXXXX = 1/22300745198530623141535718272648361505980416 X.XXXXXXX = 1/44601490397061246283071436545296723011960832 X.XXXXXXX = 1/89202980794122492566142873090593446023921664 X.XXXXXXX = 1/178405961588244985132285746181186892047843328 X.XXXXXXX = 1/356811923176489970264571492362373784095686656 X.XXXXXXX = 1/713623846352979940529142984724747568191373312 X.XXXXXXX = 1/1427247692705959881058285969449495136382746624 X.XXXXXXX = 1/2854495385411919762116571938898990272765493248 X.XXXXXXX = 1/5708990770823839524233143877797980545530986496 X.XXXXXXX = 1/11417981541647679048466287755595961091061972992 X.XXXXXXX = 1/22835963083295358096932575511191922182123945984 X.XXXXXXX = 1/45671926166590716193865151022383844364247891968 X.XXXXXXX = 1/91343852333181432387730302044767688728495783936 X.XXXXXXX = 1/182687704666362864775460604089535377456991567872 X.XXXXXXX = 1/365375409332725729550921208179070754913983135744 X.XXXXXXX = 1/730750818665451459101842416358141509827966271488 X.XXXXXXX = 1/1461501637330902918203684832716283019655932542976 X.XXXXXXX = 1/2923003274661805836407369665432566039311865085952 X.XXXXXXX = 1/5846006549323611672814739330865132078623730171904 X.XXXXXXX = 1/11692013098647223345629478661730264157247460343808 X.XXXXXXX = 1/23384026197294446691258957323460528314494920687616 X.XXXXXXX = 1/46768052394588893382517914646921056628989841375232 X.XXXXXXX = 1/93536104789177786765035829293842113257979682750464 X.XXXXXXX = 1/187072209578355573530071658587684226515959365500928 X.XXXXXXX = 1/374144419156711147060143317175368453031918731001856 X.XXXXXXX = 1/748288838313422294120286634350736906063837462003712 X.XXXXXXX = 1/1496577676626844588240573268701473812127674924007424 X.XXXXXXX = 1/2993155353253689176481146537402947624255349848014848 X.XXXXXXX = 1/5986310706507378352962293074805895248510699696029696 X.XXXXXXX = 1/11972621413014756705924586149611790497021399392059392 X.XXXXXXX = 1/23945242826029513411849172299223580994042798784118784 X.XXXXXXX = 1/47890485652059026823698344598447161988085597568237568 X.XXXXXXX = 1/95780971304118053647396689196894323976171195136475136 X.XXXXXXX = 1/191561942608236107294793378393788647952342390272950272 X.XXXXXXX = 1/383123885216472214589586756787577295904684780545900544 X.XXXXXXX = 1/766247770432944429179173513575154591809369561091801088 X.XXXXXXX = 1/1532495540865888858358347027150309183618739122183602176 X.XXXXXXX = 1/3064991081731777716716694054300618367237478244367204352 X.XXXXXXX = 1/6129982163463555433433388108601236734474956488734408704 X.XXXXXXX = 1/12259964326927110866866776217202473468949912977468817408 X.XXXXXXX = 1/24519928653854221733733552434404946937899825954937634816 X.XXXXXXX = 1/49039857307708443467467104868809893875799651909875269632 X.XXXXXXX = 1/98079714615416886934934209737619787751599303819750539264 X.XXXXXXX = 1/196159429230833773869868419475239575503198607639501078528 X.XXXXXXX = 1/392318858461667547739736838950479151006397215279002157056 X.XXXXXXX = 1/784637716923335095479473677900958302012794430558004314112 X.XXXXXXX = 1/1569275433846670190958947355801916604025588861116008628224 X.XXXXXXX = 1/3138550867693340381917894711603833208051177722232017256448 X.XXXXXXX = 1/6277101735386680763835789423207666416102355444464034512896 X.XXXXXXX = 1/12554203470773361527671578846415332832204710888928069025792 X.XXXXXXX = 1/25108406941546723055343157692830665664409421777856138051584 X.XXXXXXX = 1/50216813883093446110686315385661331328818843555712276103168 X.XXXXXXX = 1/100433627766186892221372630771322662657637687111424552206336 X.XXXXXXX = 1/200867255532373784442745261542645325315275374222849104412672 X.XXXXXXX = 1/401734511064747568885490523085290650630550748445698208825344 X.XXXXXXX = 1/803469022129495137770981046170581301261101496891396417650688 X.XXXXXXX = 1/1606938044258990275541962092341162602522202993782792835301376 X.XXXXXXX = 1/3213876088517980551083924184682325205044405987565585670602752 X.XXXXXXX = 1/6427752177035961102167848369364650410088811975131171341205504 X.XXXXXXX = 1/12855504354071922204335696738729300820177623950262342682411008 X.XXXXXXX = 1/25711008708143844408671393477458601640355247900524685364822016 X.XXXXXXX = 1/51422017416287688817342786954917203280710495801049370729644032 X.XXXXXXX = 1/102844034832575377634685573909834406561420991602098741459288064 X.XXXXXXX = 1/205688069665150755269371147819668813122841983204197482918576128 X.XXXXXXX = 1/411376139330301510538742295639337626245683966408394965837152256 X.XXXXXXX = 1/822752278660603021077484591278675252491367932816789931674304512 X.XXXXXXX = 1/1645504557321206042154969182557350504982735865633579863348609024 X.XXXXXXX = 1/3291009114642412084309938365114701009965471731267159726697218048 X.XXXXXXX = 1/6582018229284824168619876730229402019930943462534319453394436096 X.XXXXXXX = 1/13164036458569648337239753460458804039861886925068638906788872192 X.XXXXXXX = 1/26328072917139296674479506920917608079723773850137277813577744384 X.XXXXXXX = 1/52656145834278593348959013841835216159447547700274555627155488768 X.XXXXXXX = 1/105312291668557186697918027683670432318895095400549111254310977536 X.XXXXXXX = 1/210624583337114373395836055367340864637790190801098222508621955072 X.XXXXXXX = 1/421249166674228746791672110734681729275580381602196445017243910144 X.XXXXXXX = 1/842498333348457493583344221469363458551160763204392890034487820288 X.XXXXXXX = 1/1684996666896914987166688442938726917102321526408785780068975640576 X.XXXXXXX = 1/3369993333793829974333376885877453834204643052817571560137951281152 X.XXXXXXX = 1/6739986667587659948666753771754907668409286105635143120275902562304 X.XXXXXXX = 1/13479973335175319897333507543509815336818572211270286240551805124608 X.XXXXXXX = 1/26959946670350639794667015087019630673637144422540572481103610249216 X.XXXXXXX = 1/53919893340701279589334030174039261347274288845081144962207220498432 X.XXXXXXX = 1/107839786681402559178668060348078522694548577690162289924414440996864 X.XXXXXXX = 1/215679573362805118357336120696157045389097155380324579848828881993728 X.XXXXXXX = 1/431359146725610236714672241392314090778194310760649159697657763987456 X.XXXXXXX = 1/862718293451220473429344482784628181556388621521298319395315527974912 X.XXXXXXX = 1/1725436586902440946858688965569256363112777243042596638790631055949824 X.XXXXXXX = 1/3450873173804881893717377931138512726225554486085193277581262111899648 X.XXXXXXX = 1/6901746347609763787434755862277025452451108972170386555162524223799296 X.XXXXXXX = 1/13803492695219527574869511724554050904902217944340773110325048447598592 X.XXXXXXX = 1/27606985390439055149739023449108101809804435888681546220650096895197184 X.XXXXXXX = 1/55213970780878110299478046898216203619608871777363092441300193790394368 X.XXXXXXX = 1/110427941561756220598956093796432407239217743554726184882600387580788736 X.XXXXXXX = 1/220855883123512441197912187592864814478435487109452369765200775161577472 X.XXXXXXX = 1/441711766247024882395824375185729628956870974218904739530401550323154944 X.XXXXXXX = 1/883423532494049764791648750371459257913741948437809479060803100646309888 X.XXXXXXX = 1/1766847064988099529583297500742918515827483896875618958121606201292619776 X.XXXXXXX = 1/3533694129976199059166595001485837031654967793751237916243212402585239552 X.XXXXXXX = 1/7067388259952398118333190002971674063309935587502475832486424805170479104 X.XXXXXXX = 1/14134776519904796236666380005943348126619871175004951664972849610340958208 X.XXXXXXX = 1/28269553039809592473332760011886696253239742350009903329945699220681916416 X.XXXXXXX = 1/56539106079619184946665520023773392506479484700019806659891398441363832832 X.XXXXXXX = 1/113078212159238369893331040047546785012958969400039613319782796882727665664 X.XXXXXXX = 1/226156424318476739786662080095093570025917938800079226639565593765455331328 X.XXXXXXX = 1/452312848636953479573324160190187140051835877600158453279131187530910662656 X.XXXXXXX = 1/9046256972739					