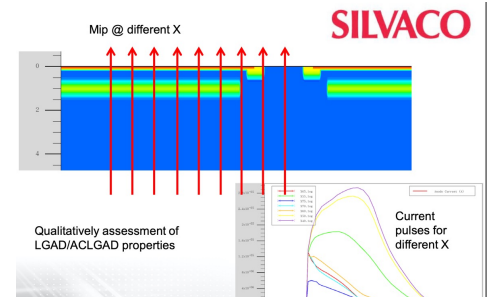
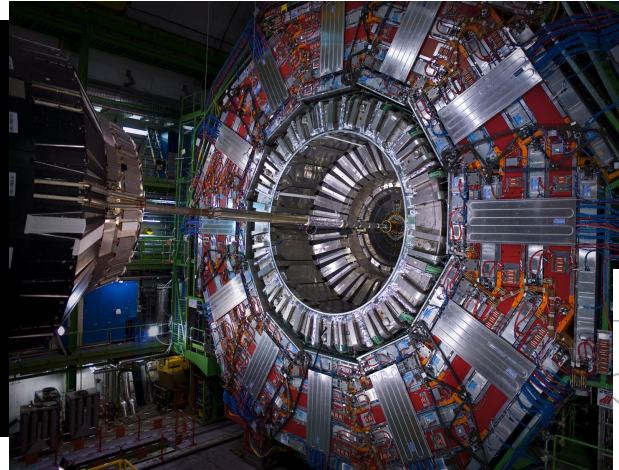
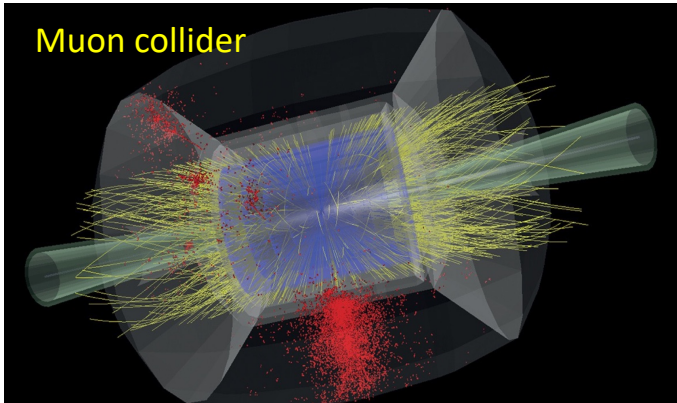
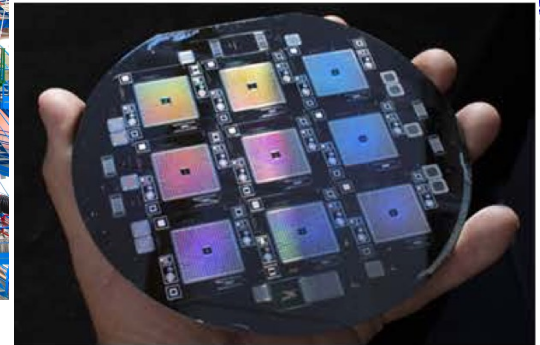
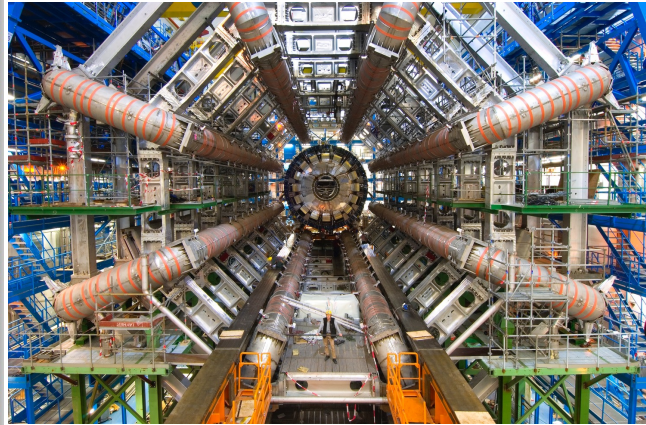
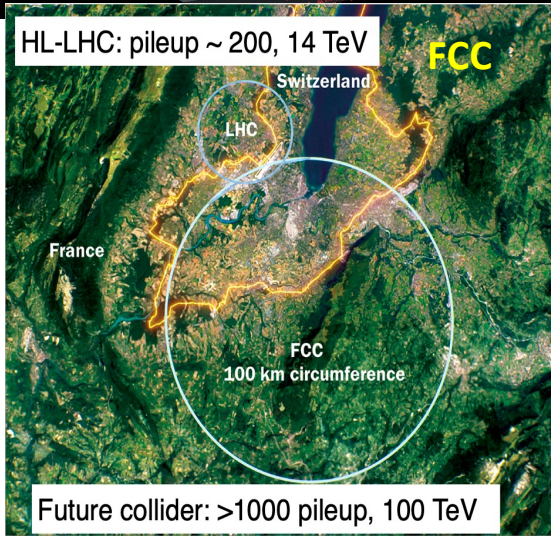
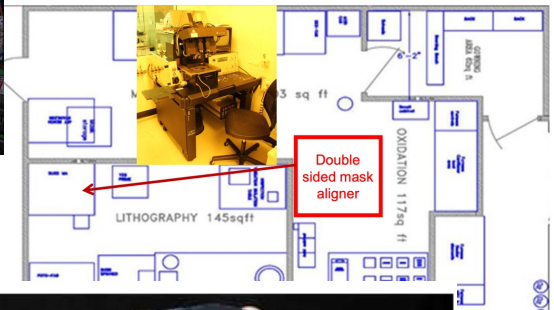


Detector and Accelerator R&D are consilient and co-dependent



Class 100 Cleanroom



Detector and Accelerator R&D are consilient and co-dependent

- Collaborative efforts are key !
- Many of my detector peers want to engage and contribute **materially** to accelerator R&D (or vice versa)
 - **Barriers of entry**: need a **funding framework** for inter- and cross-boundary research
- Establish consortia and common schemes for R&D on detectors and accelerators
- Strengthen **lab -- university** connection: joint appointments, student co-supervision
 - Encourage consilient PhD research programs in LHC physics and accelerator R&D