

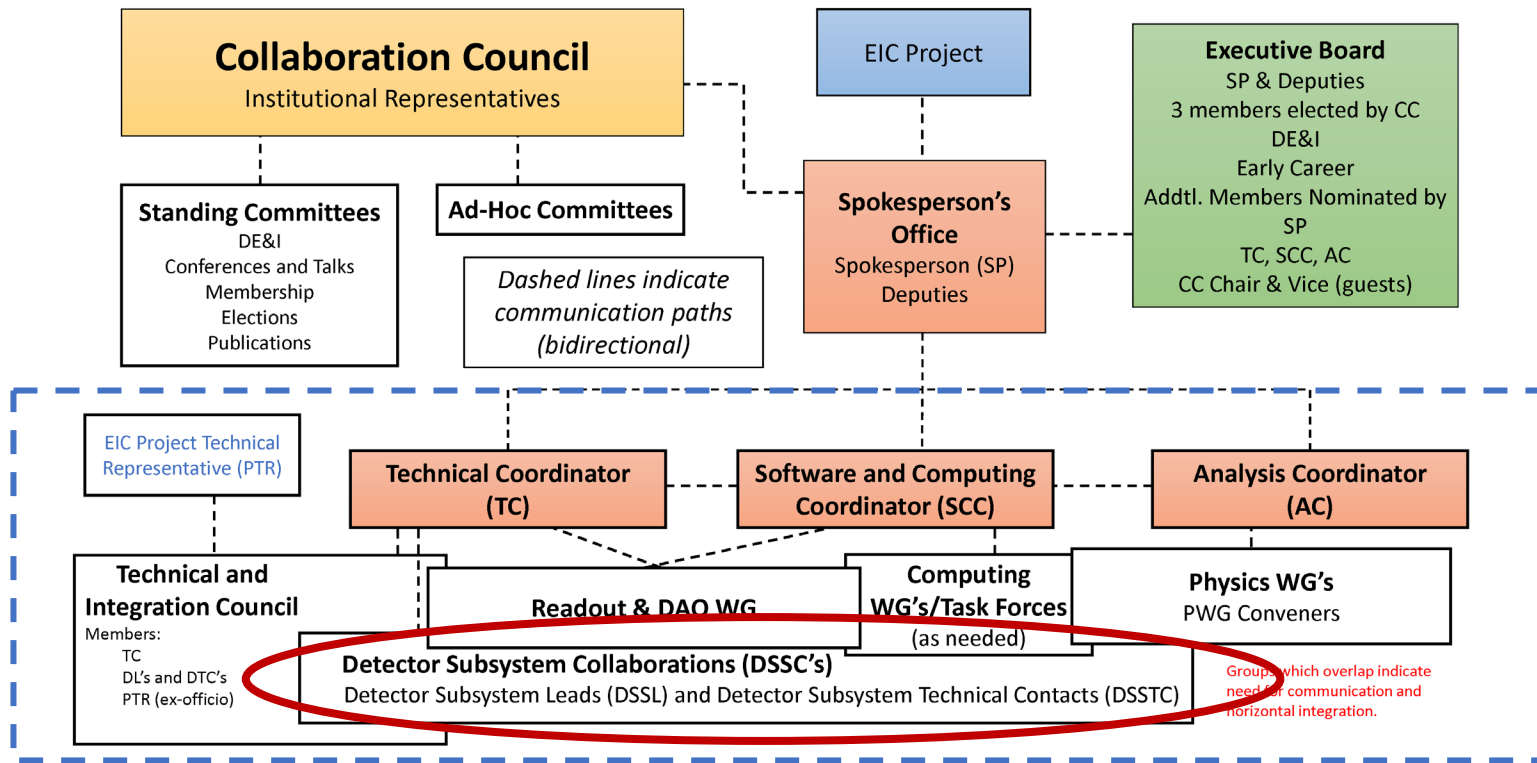
ePIC Management Plan for the Next 2-year Term

John Lajoie and Silvia Dalla Torre

ABOUT STRUCTURING THE DETECTOR SECTOR

Convener meeting, Feb. 17, 2023

Collaboration Structure Including the Scientific Structure for the Next Two-year Term



- *Need to evolve DWGs to a structure more appropriate to the (pre-)TDR/construction phase:*
WGs → Detector Subsystems
- *Each project corresponds to a subdetector built by a **Detector Subsystem Collaboration (DSSC)** of the groups and institutions contributing to it*
- *Each project collaboration will choose its **Detector Subsystem Leader (DSSL)** and **Detector Subsystem Technical Contact (DSSTC)***
- *Work in concert with EIC project CAMS*

Transition of the Scientific Structure (3)

- R-O & DAQ:
 - Connections to all detector projects
 - Presently 1 WG with 4 conveners
 - Model proposed: 1 WG with 2 conveners
- Subdetectors:
 - Presently: 6 WGs with 4 conveners each
 - Proposed model:
 - Detector Subsystem Collaborations (DSSC's) each building a well-defined subdetector
 - Each DSSC determines its Detector Subsystem Leader (DSSL) and Detector Subsystem Technical Contact (DSSTC)
 - The breakdown in projects to be discussed/optimized with the collaboration

Why this transition?

- Functional to:
 - Finalize the detector sub-systems for the TDR (CD2&3)
 - Prepare the construction period
 - *Please, note that the present 2-y term coincides with period of preparation of the TDR !*
- Groups involved in the Detector Sub-Systems:
 - Make their responsibility explicit
 - Support their engagement and enthusiasm
 - Clarify the communication chain in matter of Detector Sub-Systems
- Collaboration community:
 - Support the aggregation of different groups within the same Detector Sub-System
 - Offer an opportunity of enlargement of the collaboration also via the direct efforts of the groups in a Detector Sub-System to encourage partners, who are presently not ePIC members
- Financial Aspects
 - The explicit links of groups in a Detector Sub-System to their Detector Sub-System realization supports actions (by PM, ePIC management and Detector Project members) for in-kind contributions
- Project progress:
 - Establish direct links between the Detector Sub-Systems and the EIC Project CAMs

How this transition?

- Encouraging a bottom–up approach
 - Form a roster:
 - **Groups forming the Collaboration**
 - **Detector Sub-System Leader**
 - **Detector Sub-System Technical Contact**
 - Process to be completed within 1 month
 - SP-office and TC (when appointed) will be actively engaged in this process

Detector Sub-Systems

**The challenges have been presented:
Help us in overcoming them !**

Questions for Discussion

- Comments about the proposed new structure of the detector sector
- Comments about the transition to the new structure of the detector sector
 - What is regarded as critical in the transition?
 - Which kind of support/help is needed to facilitate the transition?
- What are the required skills for the DSSL and DSSTC ?