



ePIC Management Plan for the Next 2-Year Term

General Meeting Presentation

John Lajoie and Silvia Dalla Torre

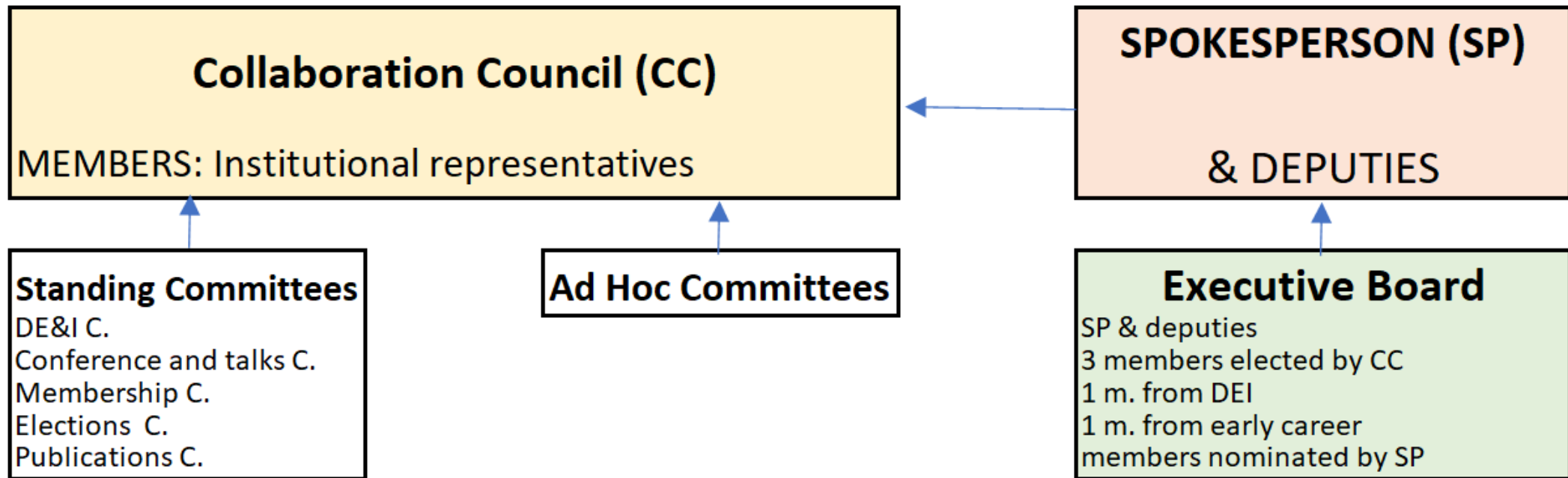
Revised: 2/23/2023



Meetings/Timeline

- Comp/SW and DWG/PWG Conveners
 - Wednesday, Feb. 15th and Friday, Feb. 17th
- Collaboration Discussion on Detector Subsystem Collaborations:
 - Friday February 24th, 10:30AM EST
- Collaboration Discussion on Detector Subsystem Collaborations and Physics Working Group Organization:
 - Thursday March 2nd, 9:30PM EST
- Collaboration Discussion on Physics Working Group Organization:
 - Friday March 3rd, 10:30AM EST
- Planning for CC Meeting Week of March 6th
 - TBD in conjunction with CC Chair/Vice-Chair
 - Approval of Management Plan and Coordinators, followed by implementation

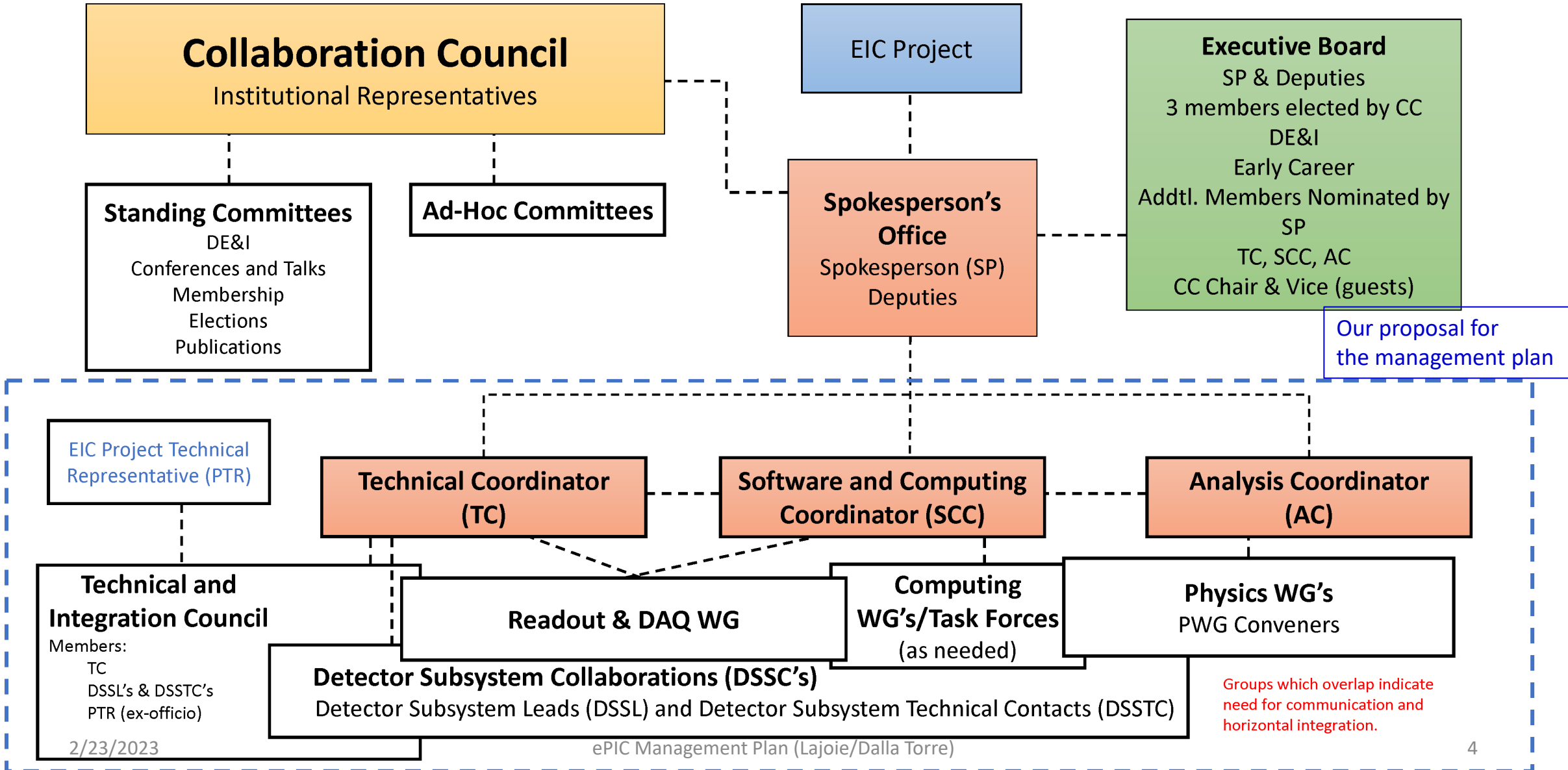
Collaboration structure from the Charter



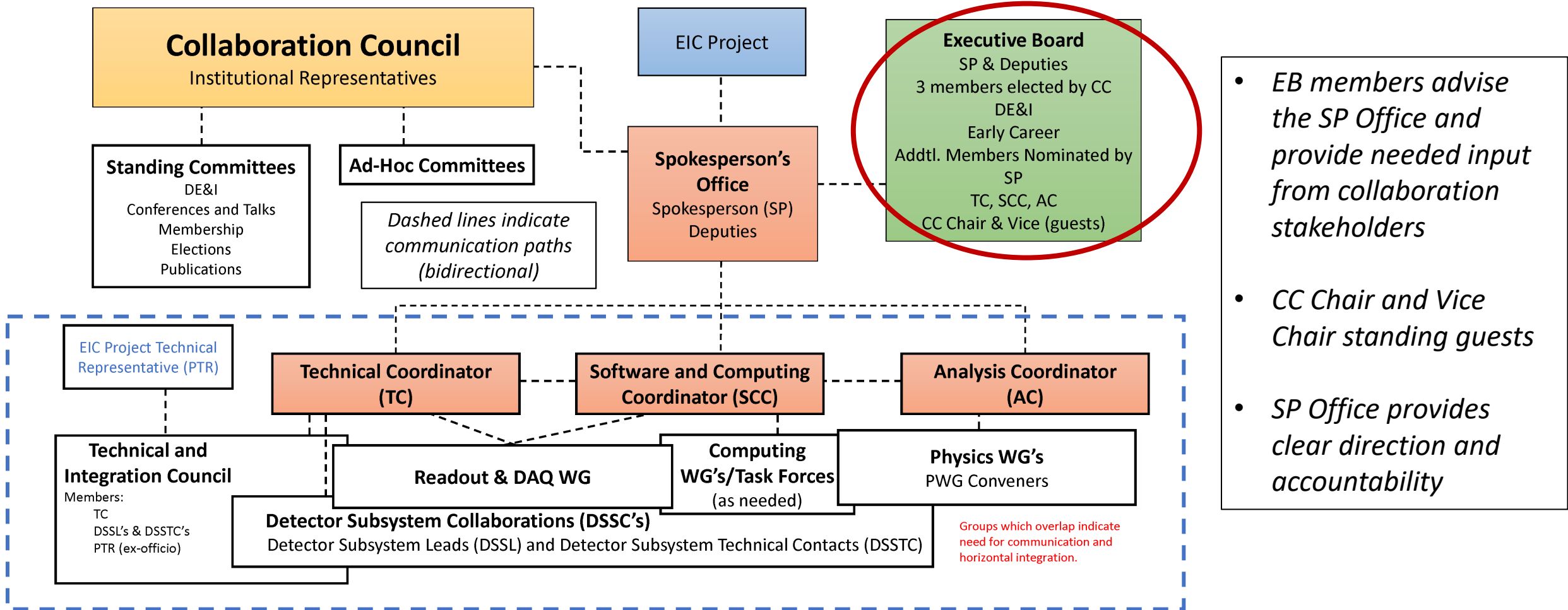
The high-level management structure, as set by the charter.

Collaboration Structure Including the Scientific Structure for the Next Two-Year Term

Black dashed lines indicate communication paths (bidirectional)

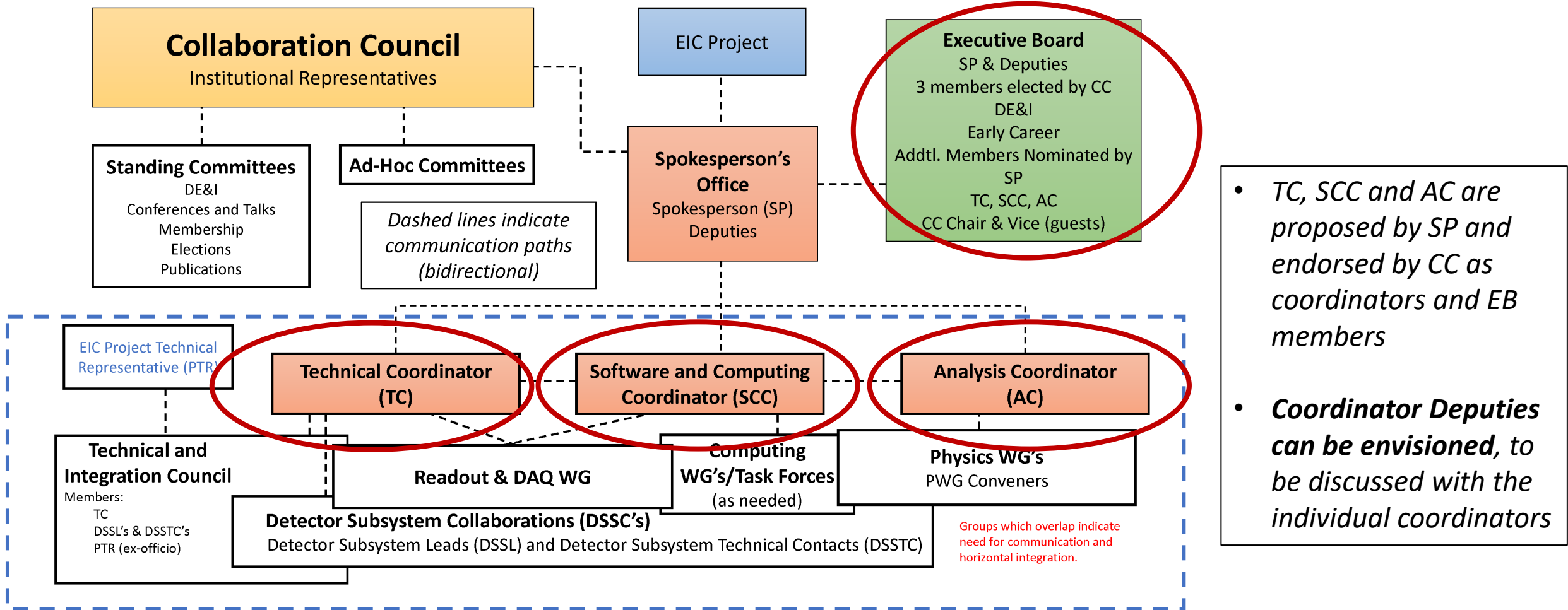


Collaboration Structure Including the Scientific Structure for the Next Two-Year Term



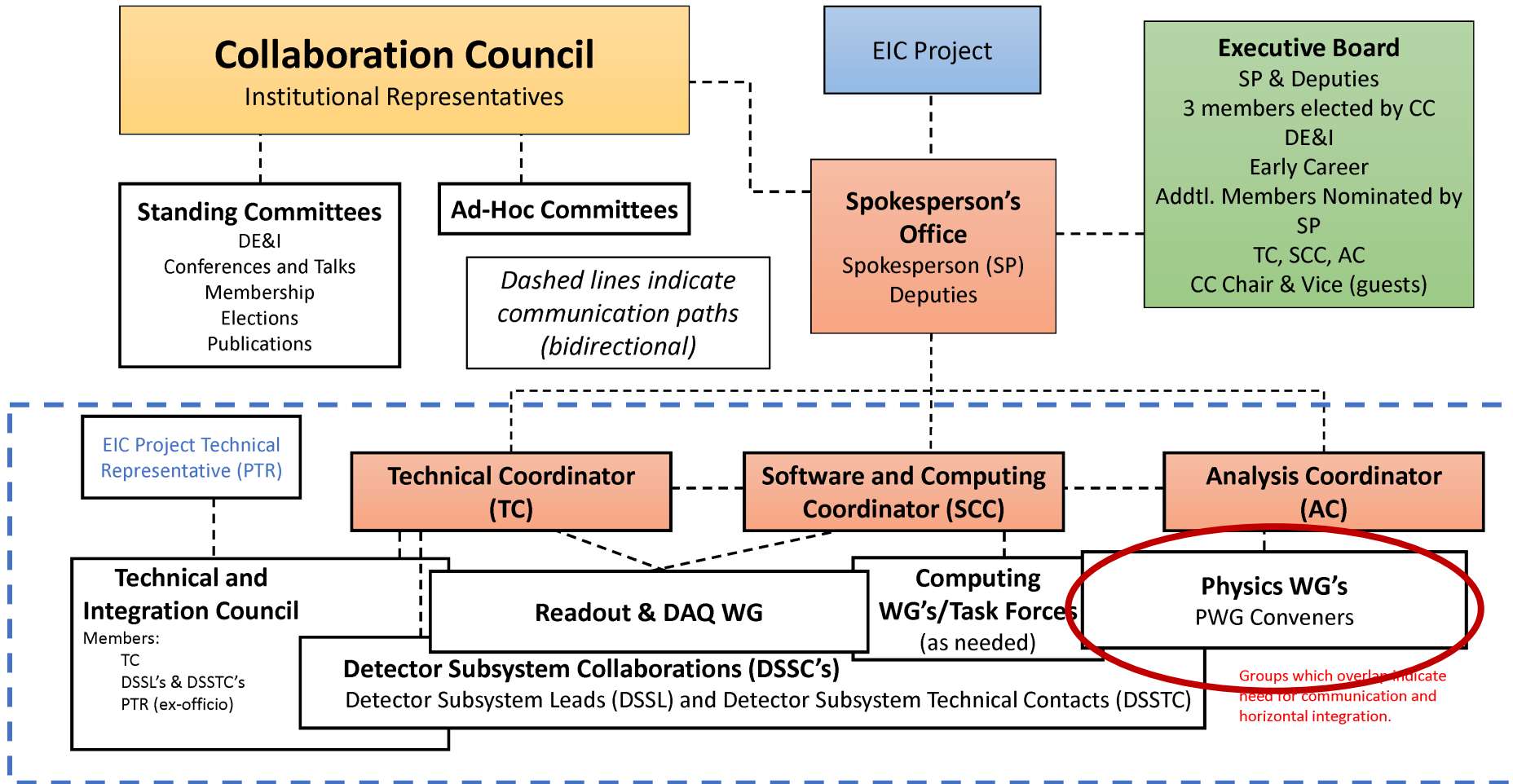
- *EB members advise the SP Office and provide needed input from collaboration stakeholders*
- *CC Chair and Vice Chair standing guests*
- *SP Office provides clear direction and accountability*

Collaboration Structure Including the Scientific Structure for the Next Two-Year Term



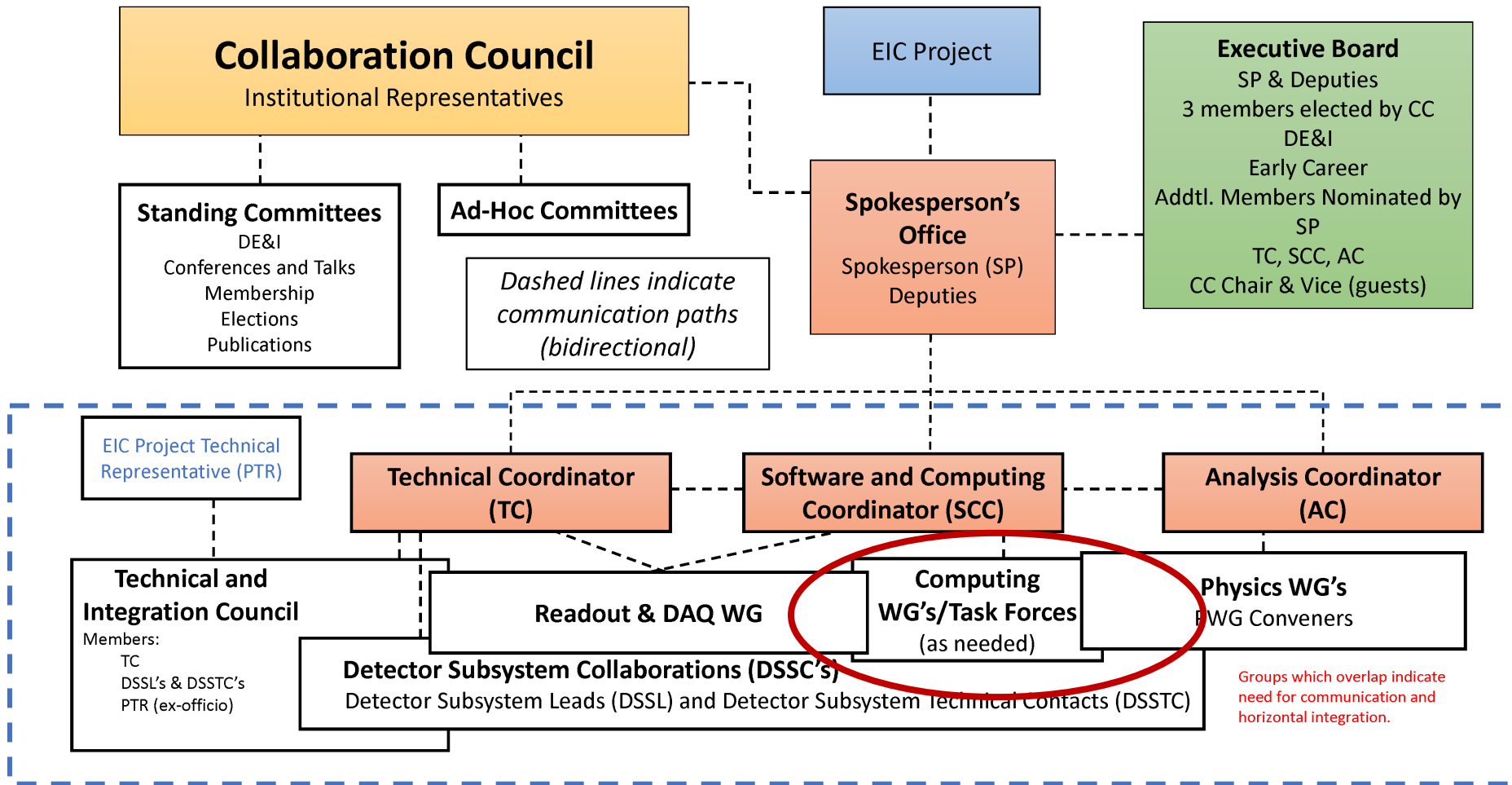
- *TC, SCC and AC are proposed by SP and endorsed by CC as coordinators and EB members*
- *Coordinator Deputies can be envisioned, to be discussed with the individual coordinators*

Collaboration Structure Including the Scientific Structure for the Next Two-Year Term



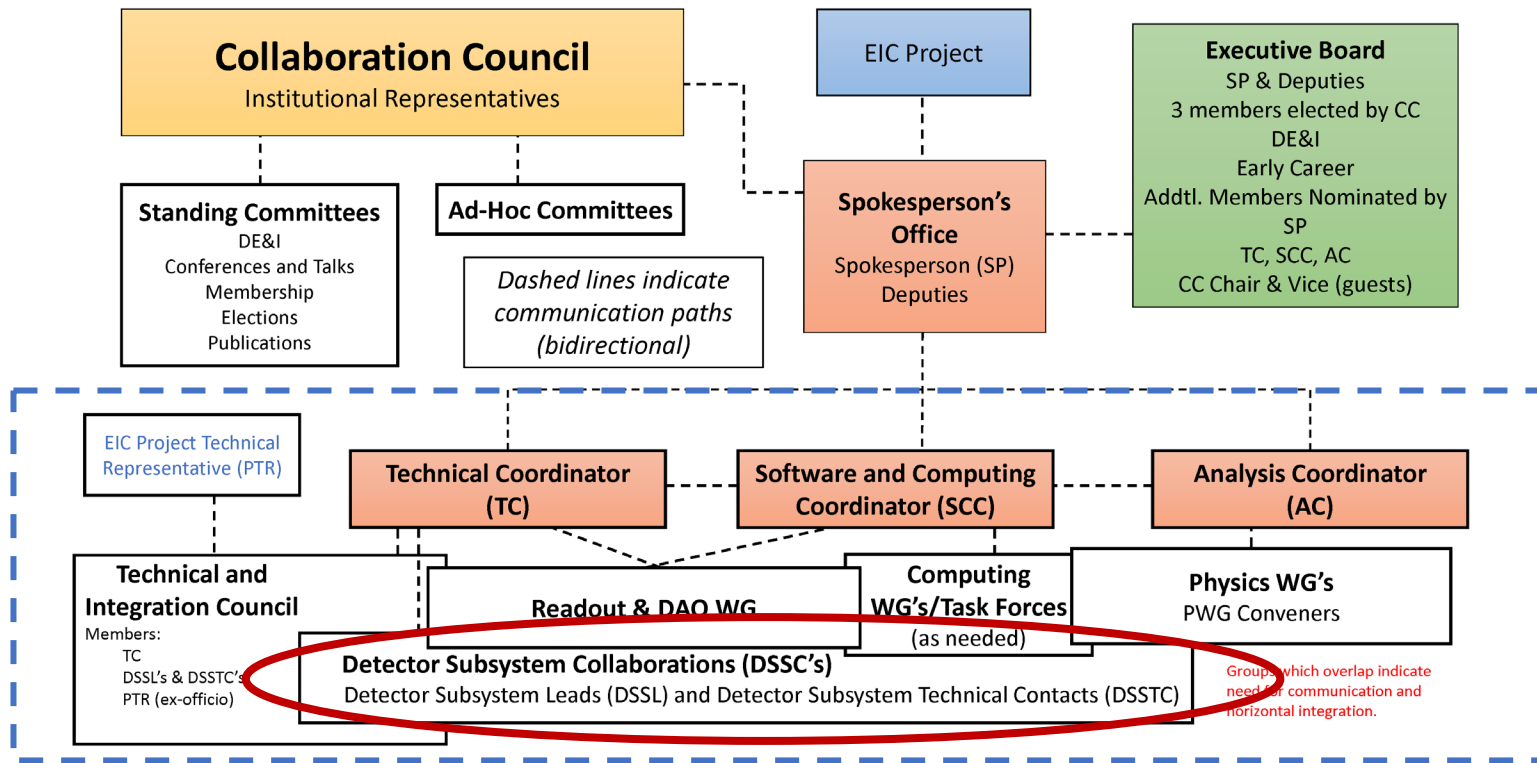
- **Primary Goal:** To use physics performance as a tool to guide the technical design
- *WG structure provides a clear entry point for new collaborators*
- *Physics WGs with ~ 2 conveners*
- *Number and domain of WGs to be discussed with the present WGs/collaboration*
- *Enhance flexibility and communication with short-term task forces*

Collaboration Structure Including the Scientific Structure for the Next Two-Year Term



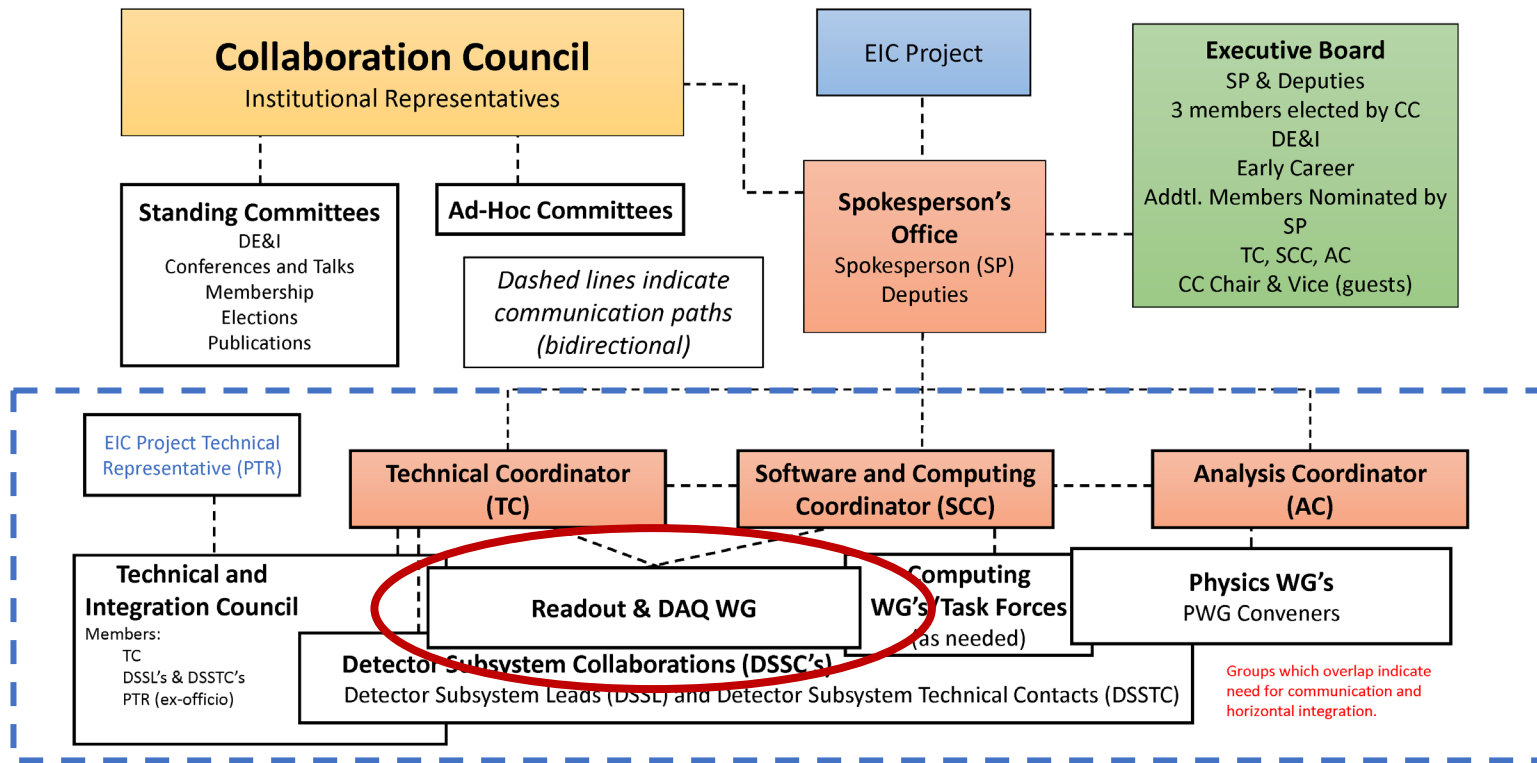
- *Software and Computing Coordinator*
 - *Interface with labs*
 - *Coordinates collaboration activity*
- *Computing WG/Task Forces:*
 - *Software architecture*
 - *Simulations*
 - *Computing resources*
 - *Advanced algorithms & AI*
 - *Documentation and User Support*
 - ...
- *A dedicated WG and flexible structure of subgroups*

Collaboration Structure Including the Scientific Structure for the Next Two-Year Term



- Need to **evolve DWGs** to a structure more appropriate to the (pre-)TDR/construction phase: **WGs → Detector Subsystems**
- Each project corresponds to a subdetector built by a **Detector Subsystem Collaboration (DSSC)** of the groups and institutions contributing to it
- Each project collaboration will choose its **Detector Subsystem Lead (DSSL)** and **Detector Subsystem Technical Contact (DSSTC)**
- DSSL/DSSTC (Collab.) <-> L4 Tech. Contacts (Project)

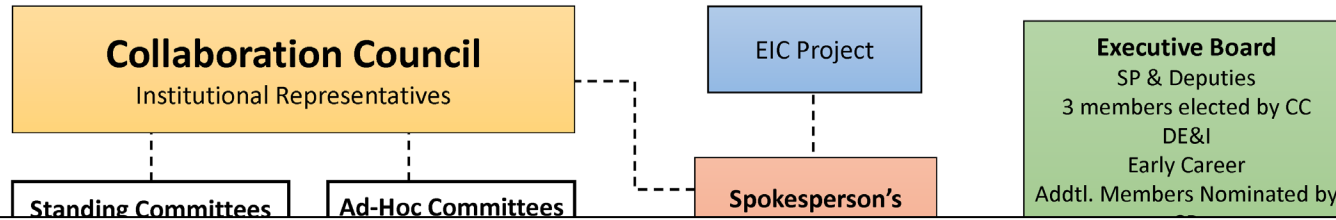
Collaboration Structure Including the Scientific Structure for the Next Two-Year Term



- Need to **evolve DWGs** to a structure more appropriate to the (pre-)TDR/construction phase: **WGs → Detector Subsystems**
- Each project corresponds to a subdetector built by a **Detector Subsystem Collaboration (DSSC)** of the groups and institutions contributing to it
- Each project collaboration will choose its **Detector Subsystem Lead (DSSL)** and **Detector Subsystem Technical Contact (DSSTC)**
- DSSL/DSSTC (Collab.) <-> L4 Tech. Contacts (Project)

- **RO and DAQ**, which is transversal to sub-detectors, remains a separate WG with ~2 conveners

Collaboration Structure Including the Scientific Structure for the Next Two-Year Term



• *Need to evolve DWGs to a structure more appropriate to the (pre-)TDR/construction phase:*

The DSSC's and TIC will be the focus of Silvia's presentation.

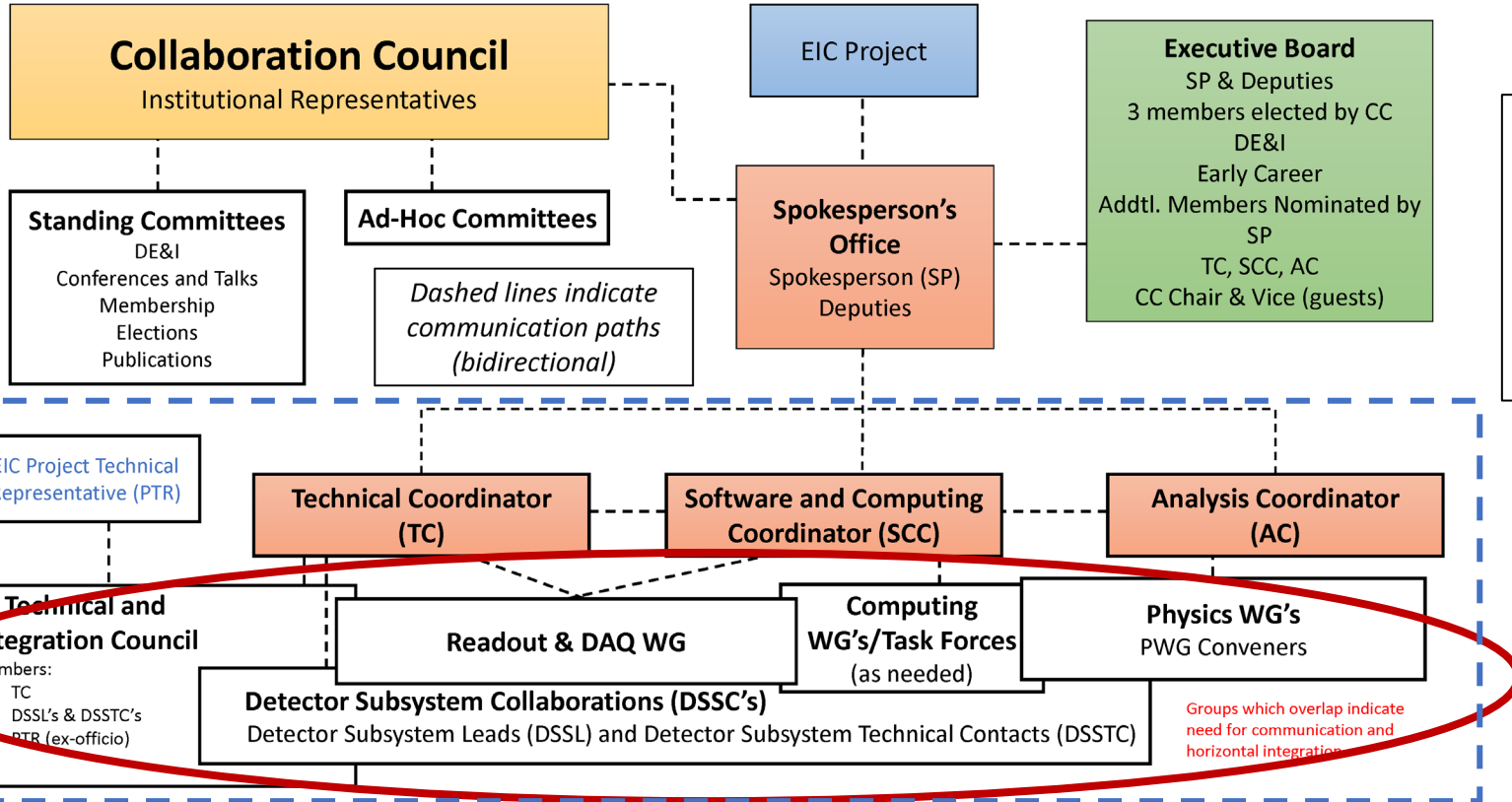
ems
s to a
detector
n (DSSC)
tions
on will
system
or
ntact
L4 Tech.

- Tec**
Co
- TC
 - DSSL's and DSSTC's
 - R-O & DAQ conveners
 - EIC PTR (ex-officio)

remains a separate WG with ~2 conveners

Contacts (Project)

Collaboration Structure Including the Scientific Structure for the Next Two-Year Term



Transversal Task Forces

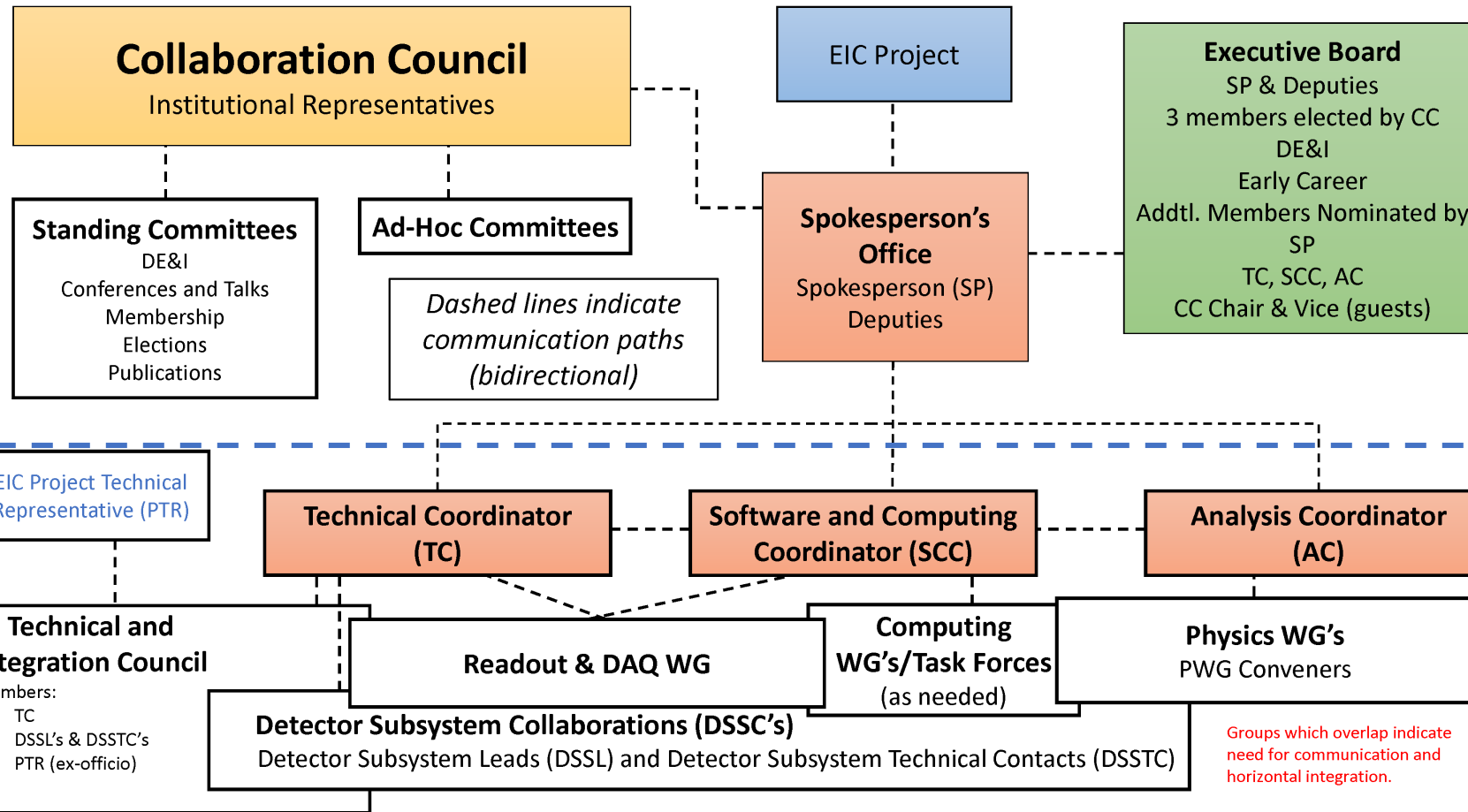
- *Proposed by coordinators (TC, SCC, AC)*
- *Formed as needed to address critical issues, or issues that require coordination between efforts*

Task forces provide the bridge between disparate efforts!

Examples:

- *Background Task Force (formed by Project)*
- *Potential TF's: ACTS/Tracking TF, Global Event Kinematics, etc.*

Detector Decision Flow



- *Review, analysis and report by TIC*
- *Recommendation formulated by SP Office in consultation with EB*
- *SP Office ensures communication with EIC Project and CC, consistent with ePIC charter*

ePIC Charter lines 66-70:

"Whenever unforeseen constraints identified by the EIC Project require substantial modifications to the detector design, the Collaboration will work with the EIC Project on related technical proposals, will assess the impact on physics capabilities of EPIC and will report their findings to the EIC project. In cases of particular relevance, this may even necessitate the Spokesperson to call for a Collaboration Council vote on the proposed changes."

Thank You

We want to thank all of the conveners and WG members for all their hard work over the past *more than two years* to chart a path to realizing the EIC science program. You have all been **incredible**, and all your hard work is appreciated.

The coming weeks will include a lot of change. Some people in convenor positions may continue, some may not – that should **not** be construed as a lack of confidence in any of the current conveners!