

ePIC Management Plan for the Next 2-year Term

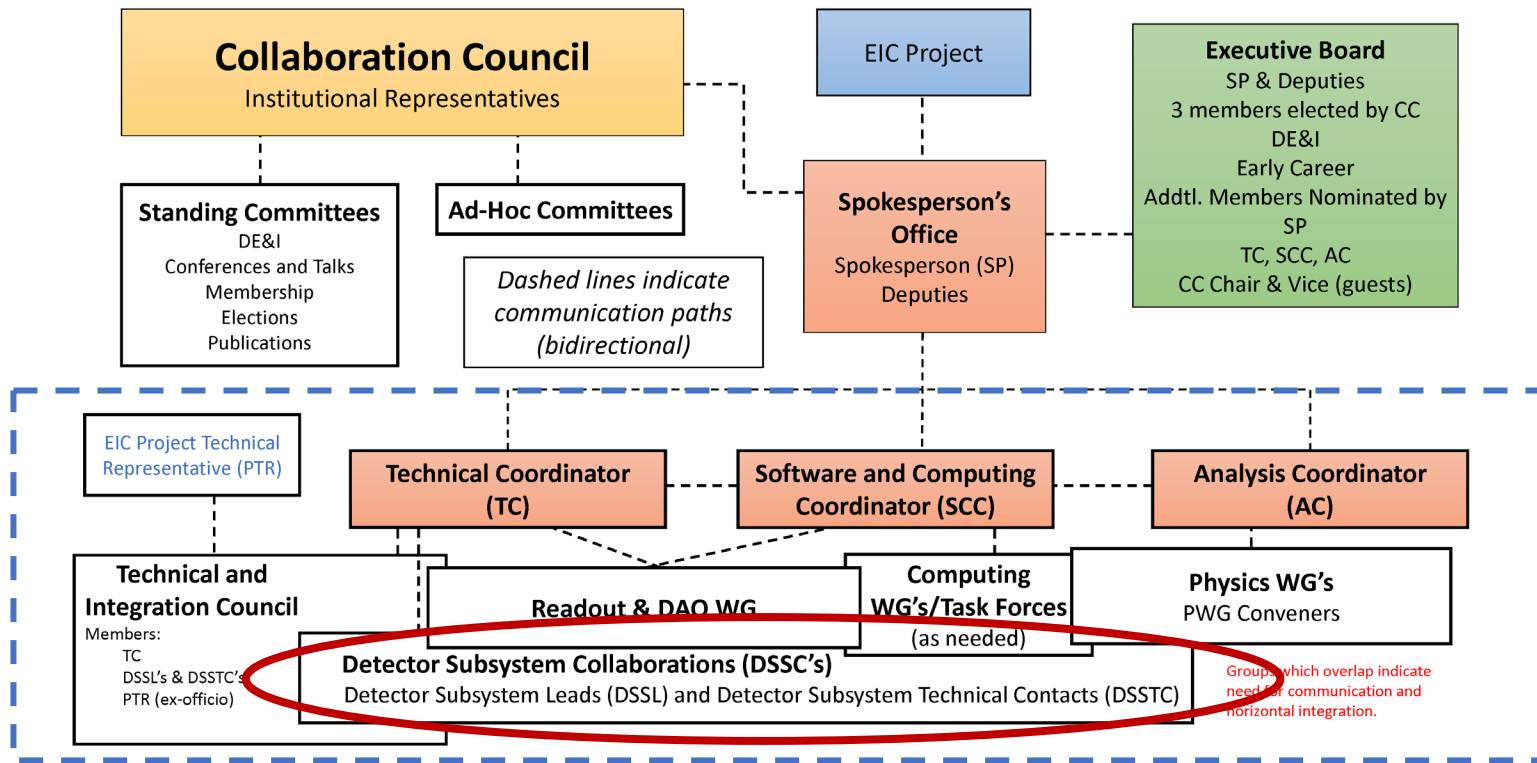
John Lajoie and Silvia Dalla Torre

ABOUT STRUCTURING THE DETECTOR SECTOR

Management plan discussion, Feb. 24, 2023

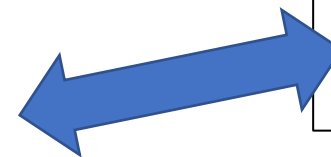
Starting with an extract of the management plan
to analyze some key aspects together

Collaboration Structure Including the Scientific Structure for the Next Two-Year Term



- Need to **evolve DWGs** to a structure more appropriate to the (pre-)TDR/construction phase: **WGs → Detector Subsystems**
- Each project corresponds to a subdetector built by a **Detector Subsystem Collaboration (DSSC)** of the groups and institutions contributing to it
- Each project collaboration will choose its **Detector Subsystem Lead (DSSL)** and **Detector Subsystem Technical Contact (DSSTC)**
- DSSL/DSSTC (Collab.) <-> L4 Tech. Contacts (Project)

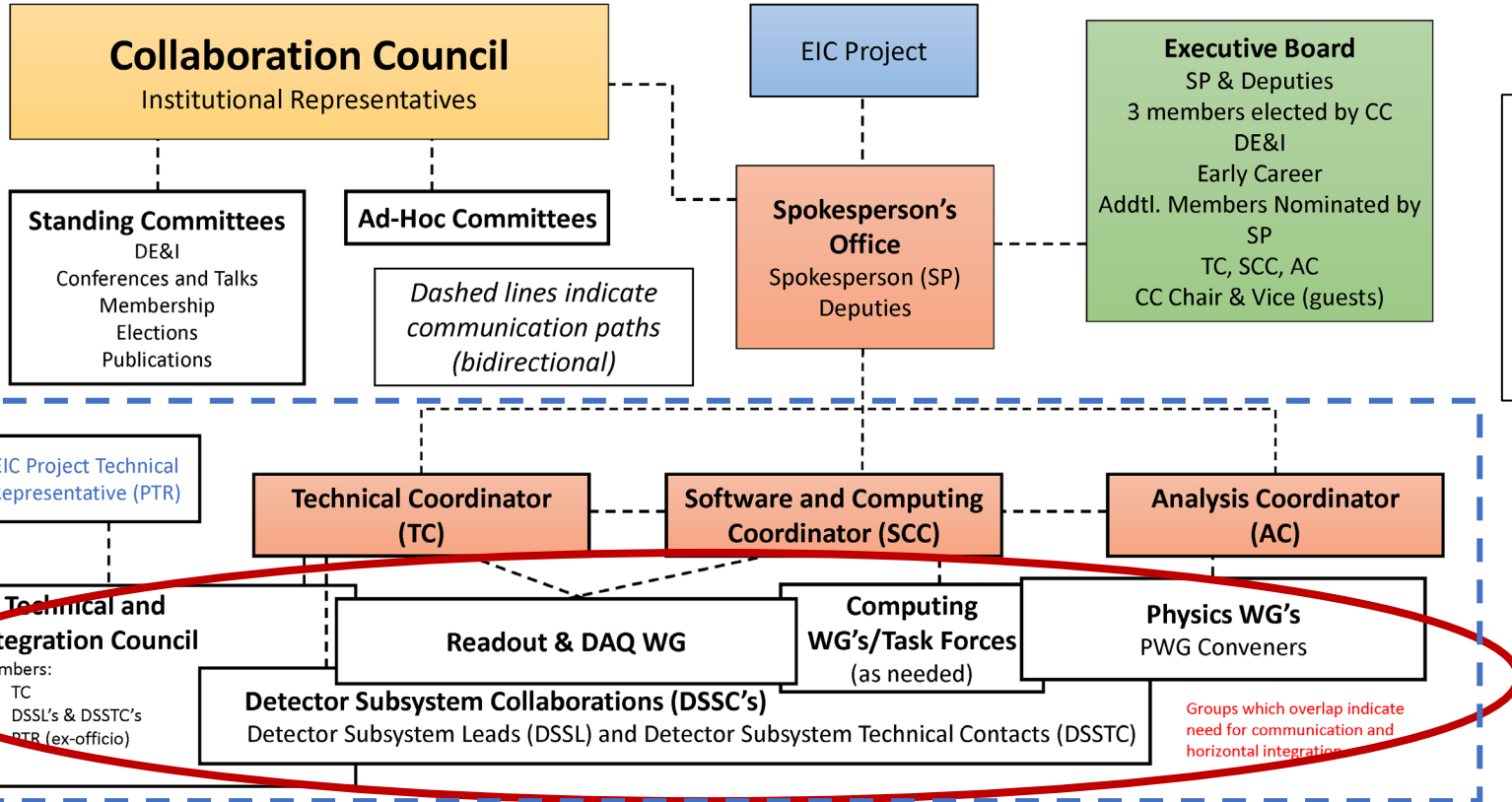
The goal is a tight integration between the project and the collaboration at a technical level.



Transition of the Scientific Structure (3)

- R-O & DAQ:
 - Connections to all detector projects
 - Presently 1 WG with 4 conveners
 - Model proposed: 1 WG with 2 conveners
- Subdetectors:
 - Presently: 6 WGs with 4 conveners each
 - Proposed model:
 - Detector Subsystem Collaborations (DSSC's) each building a well-defined subdetector
 - Each DSSC determines its Detector Subsystem Leader (DSSL) and Detector Subsystem Technical Contact (DSSTC)
 - The breakdown in projects to be discussed/optimized with the collaboration

Collaboration Structure Including the Scientific Structure for the Next Two-Year Term



Transversal Task Forces

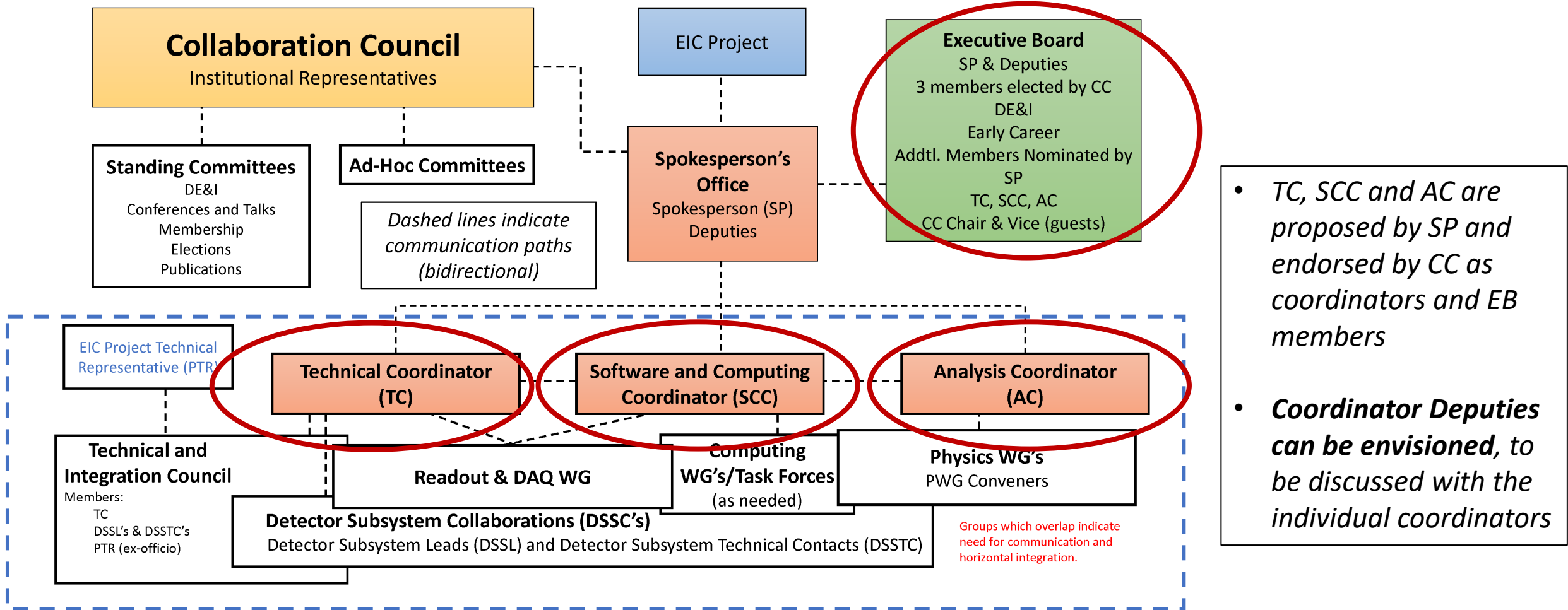
- *Proposed by coordinators (TC, SCC, AC)*
- *Formed as needed to address critical issues, or issues that require coordination between efforts*

Task forces provide the bridge between disparate efforts!

Examples:

- *Background Task Force (formed by Project)*
- *Potential TF's: ACTS/Tracking TF, Global Event Kinematics, etc.*

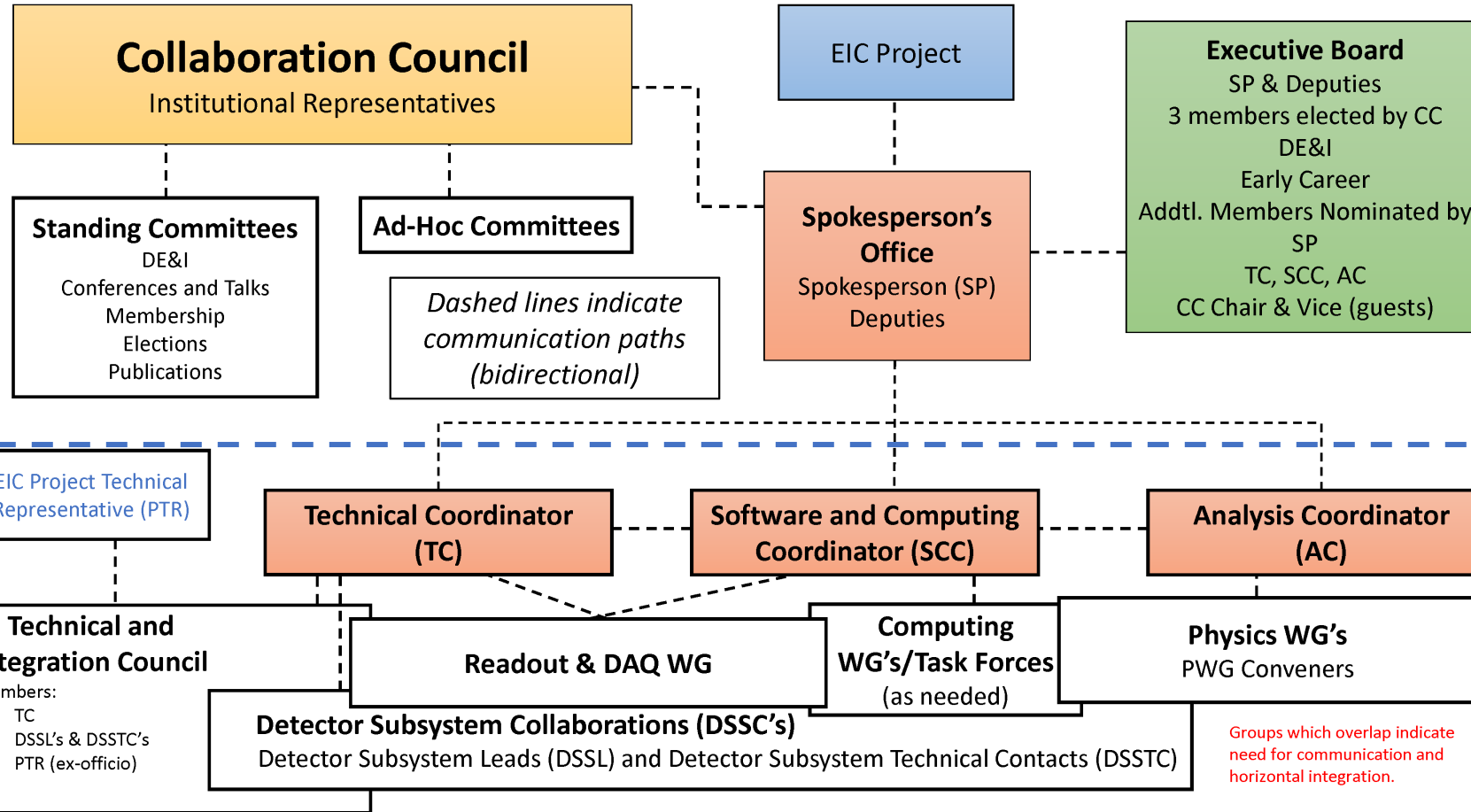
Collaboration Structure Including the Scientific Structure for the Next Two-Year Term



- *TC, SCC and AC are proposed by SP and endorsed by CC as coordinators and EB members*
- *Coordinator Deputies can be envisioned, to be discussed with the individual coordinators*

Detector Decision Flow

Internal to the ePIC Collaboration



- *Review, analysis and report by TIC*
- *Recommendation formulated by SP Office in consultation with EB*
- *SP Office ensures communication with EIC Project and CC, consistent with ePIC charter*

ePIC Charter lines 66-70:

"Whenever unforeseen constraints identified by the EIC Project require substantial modifications to the detector design, the Collaboration will work with the EIC Project on related technical proposals, will assess the impact on physics capabilities of EPIC and will report their findings to the EIC project. In cases of particular relevance, this may even necessitate the Spokesperson to call for a Collaboration Council vote on the proposed changes."

Getting deeper

in structure design and motivations

Additional elements

- TC deputies:
 - All the colleagues approached for the 3 major coordination roles are advocating the support **deputies** !
 - One/a small team where each one has a specific sector ?
 - Deputies taking care of organizing Task Forces (TF) and acting as report point for TFs? (see also below in this slide)
- Technical and Integration Council (TIC):
 - Chair by the TC, supported by deputies
 - Members: DSSLs and DSSTCs, R-O & DAQ conveners, EIC Project Technical Representative
 - It is **an evolution of the GD/I**:
 - GD/I conveners → TC and deputies
 - GD/I members, namely WG conveners → TIC members
- Transversal effort
 - An absolute need
 - Can be proposed/initiated by different bodies in the collaboration, but certainly several will be generated within the detector bodies
 - Therefore, the option: “Deputies taking care of organizing Task Forces (TF) and acting as report point for TFs”
- Decision flow
 - The proposed decision flow is **internal** to the ePIC Collaboration
 - When the decision results in the proposal of modifications to the Detector Baseline, it will be **submitted to the Change Control Process**
- DSSLs and DSSTCs
 - DSSL - the “administrative” leadership
 - DSSTC - the “technical” leadership
 - They can coincide (in particular in smaller DSSCs)

Why this transition?

- Functional to:
 - Finalize the detector sub-systems for the TDR (CD2&3)
 - Prepare the construction period
 - *Please, note that the present 2-y term coincides with period of preparation of the TDR !*
 - All large-size collaborations have similar structures
- Groups involved in the Detector Sub-Systems:
 - Make their responsibility explicit
 - Support their engagement and enthusiasm
 - Clarify the communication chain in matter of Detector Sub-Systems
- Collaboration community:
 - Support the aggregation of different groups within the same Detector Sub-System
 - Offer an opportunity of enlargement of the collaboration also via the direct efforts of the groups in a Detector Sub-System to encourage partners, who are presently not ePIC members
- Financial Aspects
 - The explicit links of groups in a Detector Sub-System to their Detector Sub-System realization supports actions (by PM, ePIC management and Detector Sub-Systems members) for in-kind contributions
- Project progress:
 - Establish direct links between the Detector Sub-Systems and the EIC Project CAMs

How this transition?

- Encouraging a bottom–up approach
 - Form a roster:
 - **Groups forming the Collaboration**
 - **Detector Sub-System Leader**
 - **Detector Sub-System Technical Contact**
 - Process to be completed within 1 month
 - SP-office and TC and deputies (when appointed) will be actively engaged in this process

Detector Sub-Systems

**The challenges have been presented:
Help us in overcoming them !**

Questions for Discussion

- Comments about the proposed new structure of the detector sector
- Comments about the transition to the new structure of the detector sector
 - What is regarded as critical in the transition?
 - Which kind of support/help is needed to facilitate the transition?
- Comments about the internal decision flow?
- TC deputies: one vs a small team?
- TC deputies: the right role as reference for the task forces?
- Your view about two persons for DSSL and DSSTC vs a single one ?
- What are the required skills for the DSSLs and DSSTCs ?