

ePIC Management Plan for the Next 2-year Term

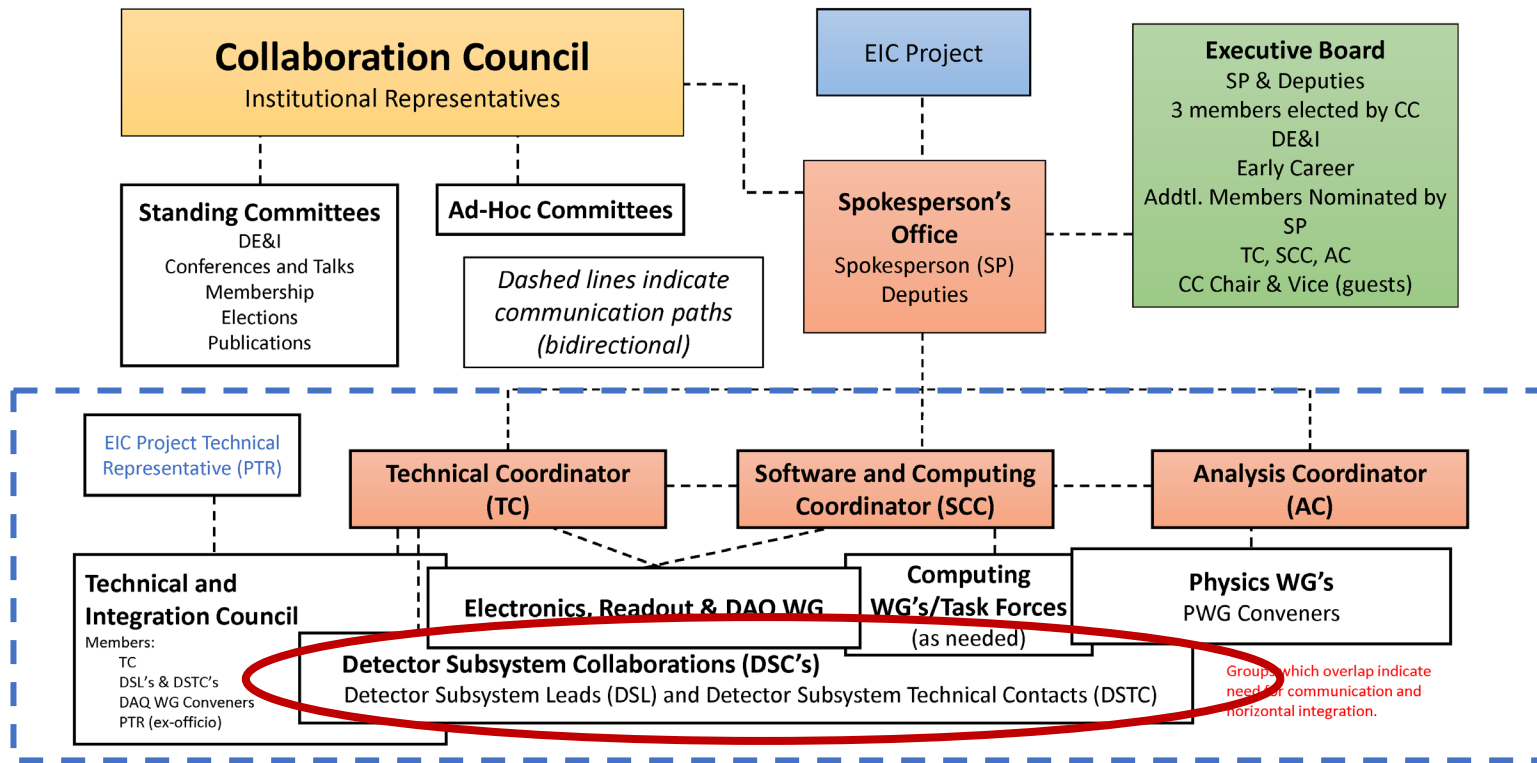
John Lajoie and Silvia Dalla Torre

ABOUT STRUCTURING THE DETECTOR SECTOR

Management plan discussion, March 3, 2023

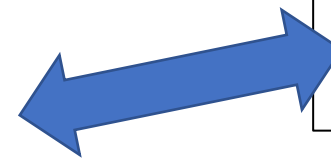
An update respect to one week ago (Feb. 24)

Collaboration Structure Including the Scientific Structure for the Next Two-Year Term



- Need to **evolve DWGs** to a structure more appropriate to the (pre-)TDR/construction phase: **WGs → Detector Subsystems**
- Each project corresponds to a subdetector built by a **Detector Subsystem Collaboration (DSC)** of the groups and institutions contributing to it
- Each project collaboration will choose its **Detector Subsystem Lead (DSL)** and **Detector Subsystem Technical Contact (DSTC)**
- DSL/DSTC (Collab.) <-> L4 Tech. Contacts (Project)

The goal is a tight integration between the project and the collaboration at a technical level.



On February 24:
Several requests of clarification about DSC

- Reminder, our **definition of a DSC:**
 - A collaboration formed by groups that work together to design, build and later operate and maintain a detector sub system
- Approach: clarification by **a concrete scheme** in next slide (still a draft)

DSC scheme (*draft*)

DWG	DSC	Notes
(now)	(in management plan)	
tracking	Si trackers	building on silicon consortium
	Gaseous trackers	
calorimetry	backward ECal	building on EEMCal consortium
	backward HCal	
	barrel ECal	
	barrel HCal	
	forward ECal	
	forward HCal	
	HCal insert	presently not in the reference detector
Cherenkov PID	backward RICH	
	DIRC	
	dRICH	
ToF	barrel AC-LGADs	
	forward AC-LGADs	
far forward	tracking (RPs, off-momentum)	from conferring with the existing conveners
	B0	
	ZDC	
far backward	Lumi Pair Spectrometer	following a suggestion of the existing conveners
	Lumi calorimeters	
	low Q ² taggers	

DSC scheme (draft)

DWG	DSC	Notes
(now)	(in management plan)	
tracking	Si trackers	building on silicon consortium
	Gaseous trackers	
calorimetry	backward ECal	building on EEMCal consortium
	backward HCal	
	barrel ECal	
ToF	barrel AC-LGADs	
	forward AC-LGADs	
	tracking (RPs, off-momentum)	
far forward	B0	from conferring with the existing conveners
	ZDC	
far backward	Lumi Pair Spectrometer	following a suggestion of the existing conveners
	Lumi calorimeters	
	low Q ² taggers	

Just a draft:
Your input to improve the scheme is welcome

On February 24:

Questions about needs transversal to DSCs

- A concrete example:
 - To optimize the overall tracking performance across the two distinct DSCs (Si, Gas)
 - Establish a task force with this optimization as its specific goal
- Another concrete example:
 - Backward RICH and DIRC using the **same photosensors** (to be confirmed)
 - A common transversal team for the R&D and to define the required services

How this transition?

- DSCs are Collaborations! → Encouraging a bottom-up approach
 - Form a roster:
 - **Groups forming the Collaboration**
 - **Detector Sub-System Leader**
 - **Detector Sub-System Technical Contact**
 - Process to be completed within 1 month
 - Following step: present this roster to SP-office and TC for constructive interaction in view of converging on a consistent scheme
 - **SP-office and TC and deputies (when appointed) will be actively engaged in this process**

DSC leadership

- DSLs and DSTCs
 - DSL (DS Leader) - the “administrative/managerial” leadership
 - DSTC (DS Technical contact) - the “technical” leadership
 - They can coincide (in particular in smaller DSCs)
 - DSLs and DSTCs will sit in the TIC
- Technical and Integration Council (TIC):
 - Chair by the TC, supported by deputies
 - Members: DSLs and DSTCs, R-O & DAQ conveners, EIC Project Technical Representative
 - It is **an evolution of the GD/I**:
 - GD/I conveners → TC and deputies
 - GD/I members, namely WG conveners → TIC members