

ePIC Management Plan for the Next 2-Year Term

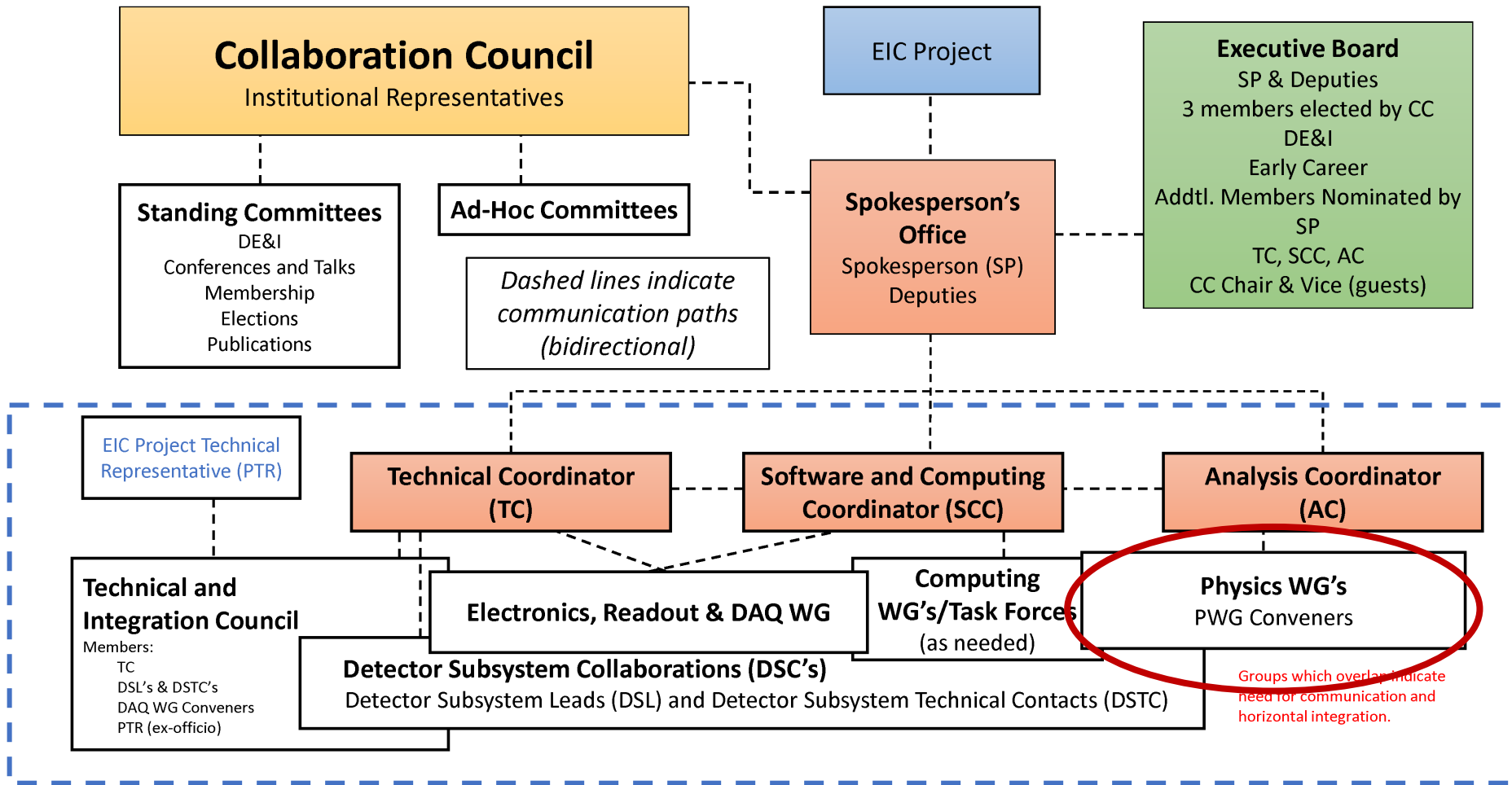
General Meeting Presentation II

John Lajoie and Silvia Dalla Torre

Revised: 3/2/2023

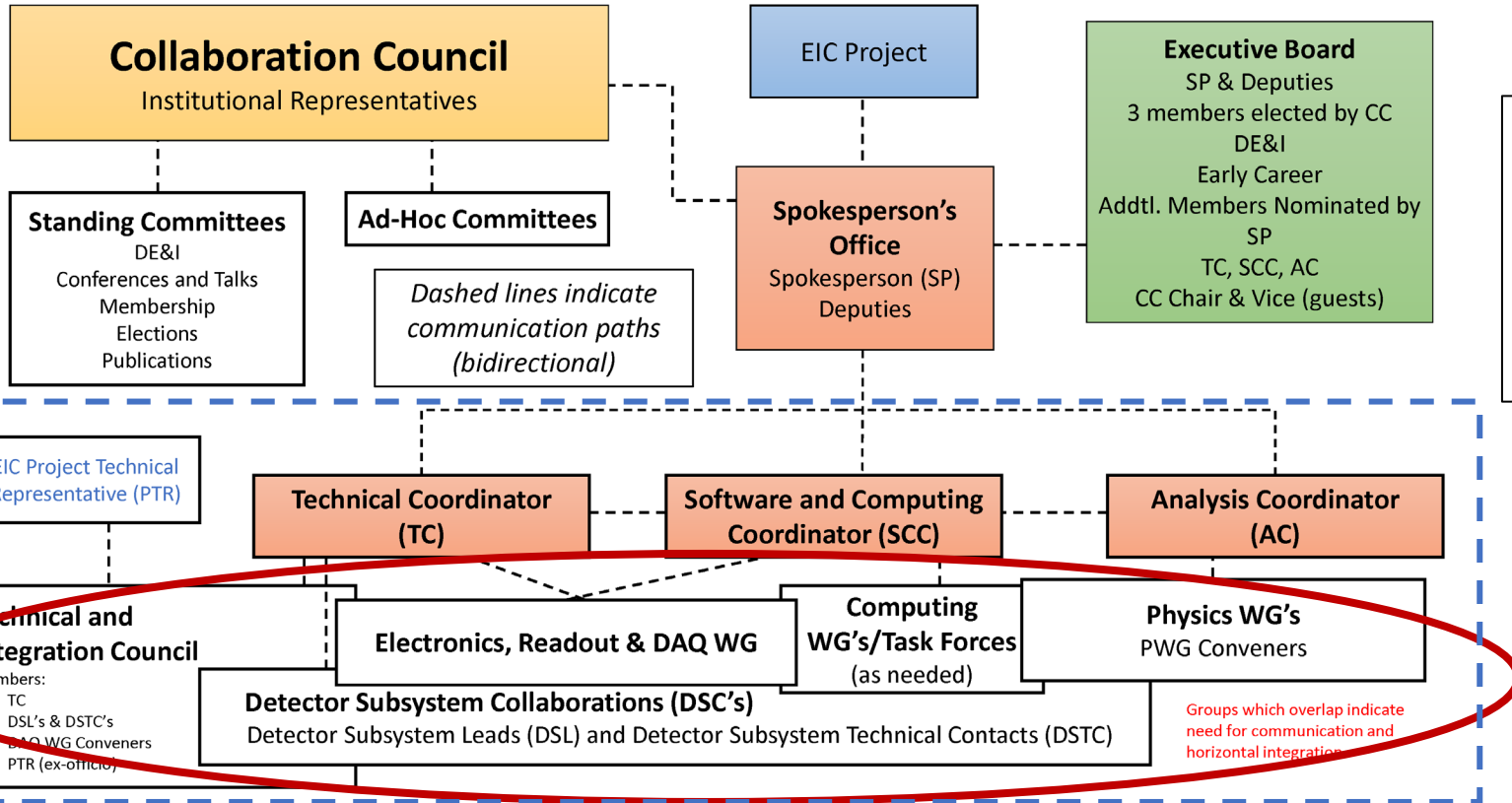
Analysis/Physics Working Group Organization

Collaboration Structure Including the Scientific Structure for the Next Two-Year Term



- **Primary Goal: To use physics performance as a tool to guide the technical design**
- *WG structure provides a clear entry point for new collaborators*
- *Physics WGs with ~ 2 conveners*
- *Number and domain of WGs to be discussed with the present WGs/collaboration*
- *Enhance flexibility and communication with short-term task forces*

Collaboration Structure Including the Scientific Structure for the Next Two-Year Term



Transversal Task Forces

- *Proposed by coordinators (TC, SCC, AC)*
- *Formed as needed to address critical issues, or issues that require coordination between efforts*

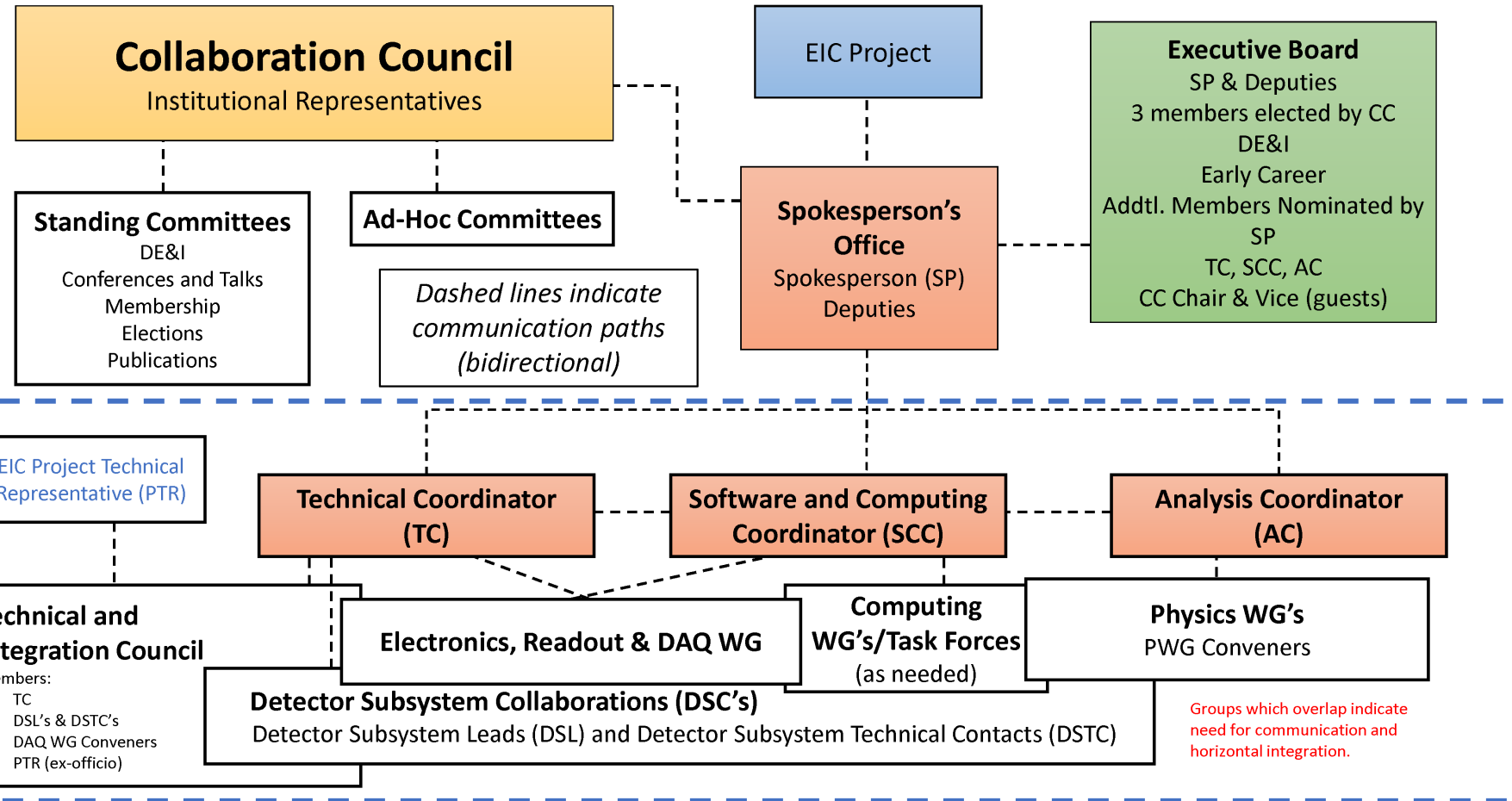
Task forces and transversal WG's provide the bridge between disparate efforts!

Examples:

- *Background Task Force (formed by Project)*
- *Potential TF's: ACTS/Tracking TF, Global Event Kinematics, etc.*

ePIC Official meetings

Goal: each meeting has a clear purpose, reduce redundancy in meetings

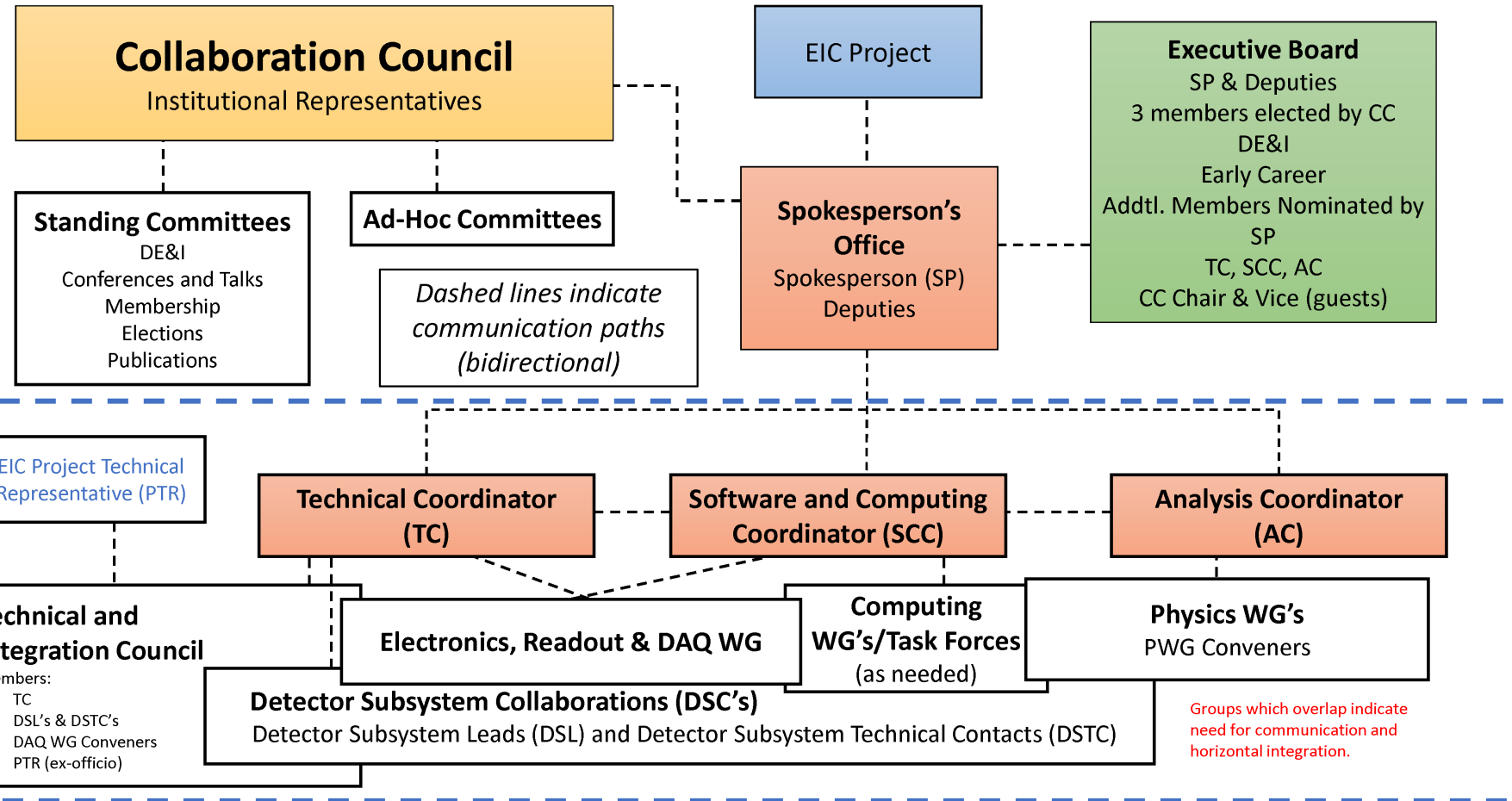


WG/TF/DSC MEETINGS:

- *Detector Subsystems, RO and DAQ WG, computing WGs/Task Forces, PWGs will organize their agendas as they see fit*
- *Open to collaboration (publicly announced in the collaboration calendar)*

ePIC Official meetings

Goal: each meeting has a clear purpose, reduce redundancy in meetings



TIC, Software and Computing, Analysis Meetings:

1. Bi-weekly

Attendance:

- TIC, Computing WG/Task Force Leaders, PWG Conveners (respectively)
- Open to collaboration (publicly announced in the collaboration calendar)

Questions for Discussion

- Is the current structure of PWG's appropriate to the task?

Physics-Oriented:

- Inclusive
- Semi-Inclusive
- Exclusive, Diffraction and Tagging
- Jets and Heavy Flavor
- BSM & Precision EW
- Merge some of these groups?

Technically-Oriented:

- Kinematics Reconstruction
- Electron ID
- PID
- Jets/Particle Flow
- ...

- How do we focus the PWG's and engage the collaboration?
- How do we make effective use of TF's? What TF's should we set up immediately?
- How do we use the PWG's to help foster new members?
- What are the requirements for the Analysis Coordinator(s)?



Transition of the Scientific Structure

- PWGs:
 - Presently 5 WGs with 4 conveners each
 - Model to be discussed with the community: 5 or 6 PWGs with 2 conveners each
 - Look at ways to maintain contact between PWG's, make it possible for people to be active in multiple PWG's