

Onsite Report

RIKEN/RBRC

Itaru Nakagawa

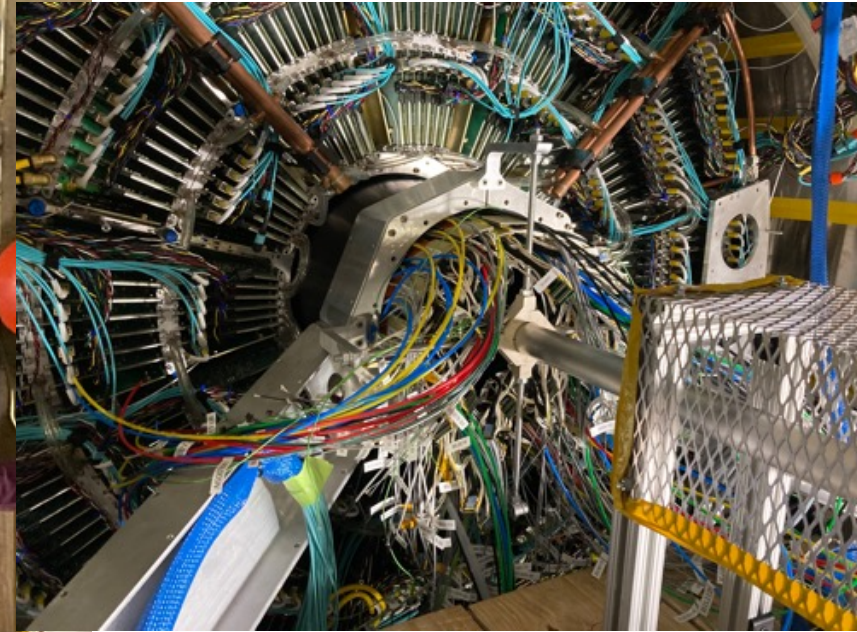
INTT Barrel Install

MARCH 2023						
SUN	MON	TUE	WED	THU	FRI	SAT
	2/27 Barrel transport to 1008	2/28	1 Clamshell close around beam pipe	2 Barrel rolled into IP position (z=0)	3 Barrel survey and fine alignment	4
5	6 ROC install/ cooling tube/etc.	7 Conv. Cable connection, start calibration data taking	8	9	10	11

Barrel Transportation



Barrel Install

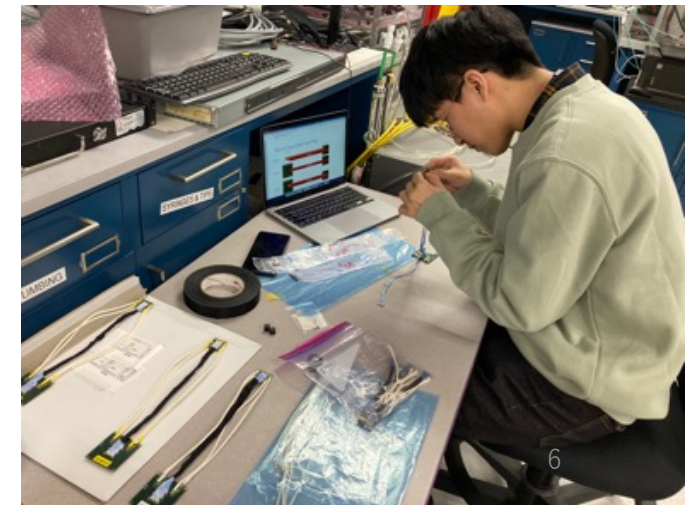
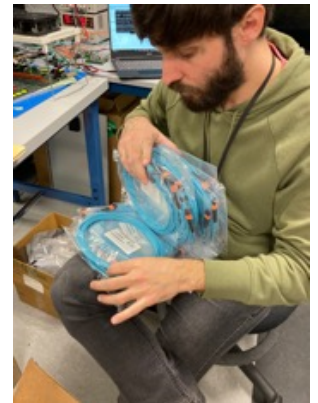


2nd Felix Server Setup in 1008

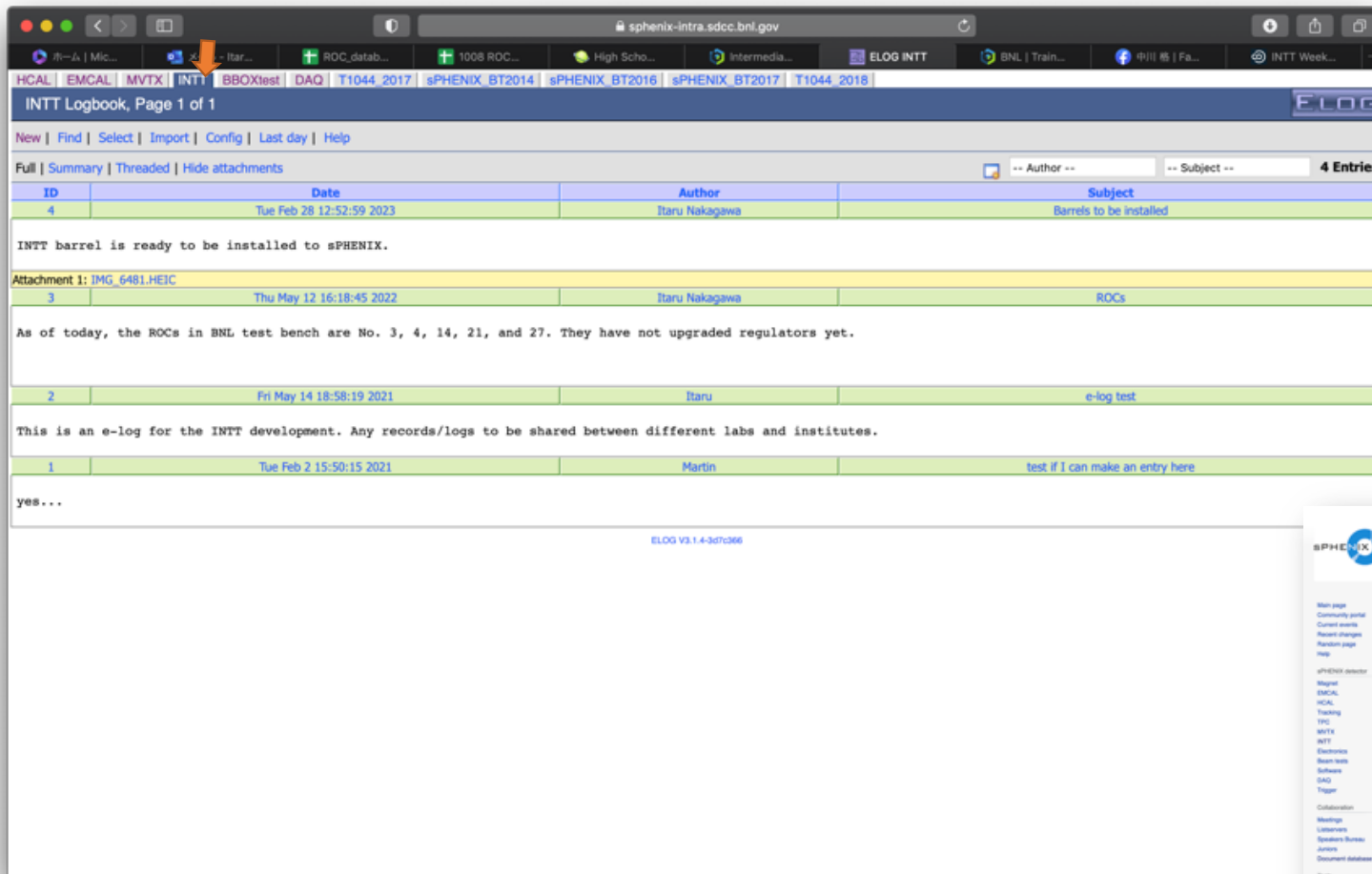


Readiness for Calibration Test @ 1008

- Felix Server-2
 - Power ✓
 - Network ✓
 - Felix FPGA download ✗ (Raul) new version under development
 - ROC LV GUI (Mai/Maya) ✓ all on/all off, no individual control
 - FPHX LV GUI ✗ (Wei-Che) backup modify test bench version script
 - HV GUI ✓
 - 5m Fiber install between the patch panel to Felix server-2 ✗ (Raul)
- Fiber
 - Install
 - Patch panel One combination needs to be swapped (Maya/Joseph)
- Power Rack
 - ROC LV Cable Install ✗
 - FPHX Cables Install ✗
 - Bias Cables Install ✓
 - MPOD Setting South ✓, North ✗ IP address not valid – (Steve)
- Cooling
 - Refrigerater
 - Cooling tubes
- Conversion Cables
 - Spare 25cm cables AC:3, BD:2



INTT e-log



INTT Logbook, Page 1 of 1

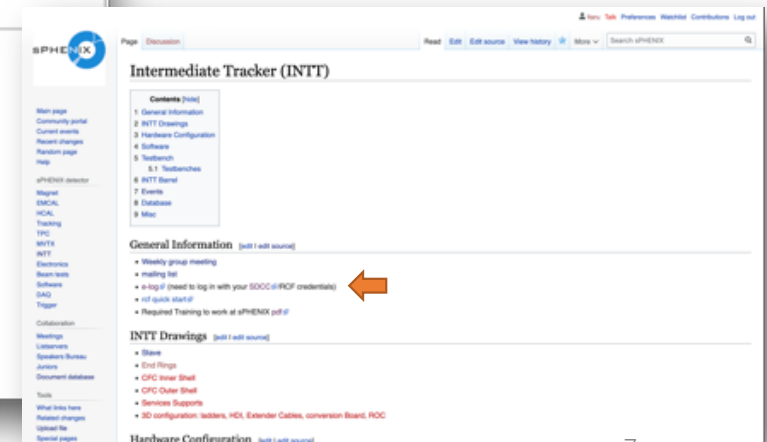
New | Find | Select | Import | Config | Last day | Help

Full | Summary | Threaded | Hide attachments

ID	Date	Author	Subject
4	Tue Feb 28 12:52:59 2023	Itaru Nakagawa	Barrels to be installed
INTT barrel is ready to be installed to sPHENIX.			
Attachment 1: IMG_6481.HEIC			
3	Thu May 12 16:18:45 2022	Itaru Nakagawa	ROCs
As of today, the ROCs in BNL test bench are No. 3, 4, 14, 21, and 27. They have not upgraded regulators yet.			
2	Fri May 14 18:58:19 2021	Itaru	e-log test
This is an e-log for the INTT development. Any records/logs to be shared between different labs and institutes.			
1	Tue Feb 2 15:50:15 2021	Martin	test if I can make an entry here
yes...			

ELOG V3.1.4-3d7c366

- Every subsystems allocated dedicated e-log page.
- It is behind the firewall and needs SDCC password.
- From now on, we should keep logs in e-log instead of the conventional paper logbook so that we can share the information with offsite crews.



sPHENIX Intermediate Tracker (INTT)

Contents [hide]

- 1 General Information
- 2 INTT Drawings
- 3 Hardware Configuration
- 4 Software
- 5 Testbench
- 6 INTT Barrel
- 7 Events
- 8 Database
- 9 Misc

General Information [edit | edit source]

- Weekly group meeting
- mailing list
- e-log if (need to log in with your SDCC e-ROF credentials)
- Not quick start!!
- Required Training to work at sPHENIX pdf!!

INTT Drawings [edit | edit source]

- Slave
- End Rings
- CPC Inner Shell
- CPC Outer Shell
- Services Support
- 3D configurations: detectors, HXD, Extender Cables, conversion Board, ROC

Hardware Configuration [edit | edit source]

<https://sphenix-intra.sdcc.bnl.gov/WWW/elog/INTT/>