

Forming the DSCs for the Next 2-year Term

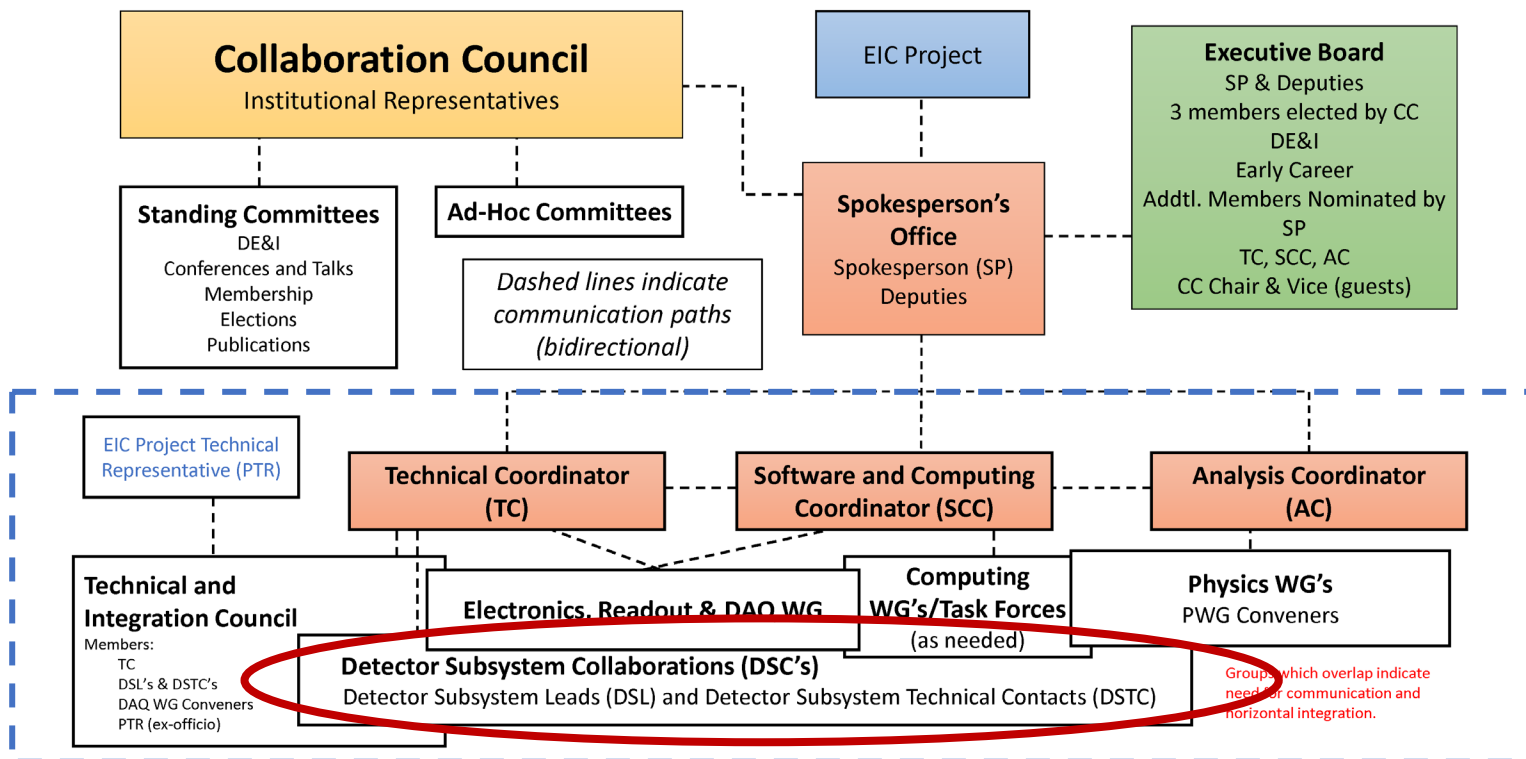
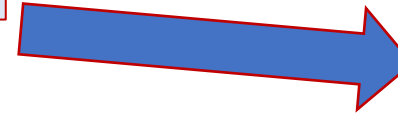
John Lajoie and Silvia Dalla Torre

Forming the DSCs

Meeting Calorimetry WG, March 22, 2023

Collaboration Structure Including the Scientific Structure for the Next Two-Year Term

The matter to be addressed today



- Need to **evolve DWGs** to a structure more appropriate to the (pre-)TDR/construction phase: **WGs → Detector Subsystems**
- Each project corresponds to a subdetector built by a **Detector Subsystem Collaboration (DSC)** of the groups and institutions contributing to it
- Each project collaboration will choose its **Detector Subsystem Lead (DSL)** and **Detector Subsystem Technical Contact (DSTC)**
- DSL/DSTC (Collab.) <-> L4 Tech. Contacts (Project)

In evidence

- Our definition of a DSC:
 - A collaboration formed by groups that work together to design, build and later operate and maintain a detector sub system

DSC scheme (*draft*)

DWG	DSC	Notes
(now)	(in management plan)	
tracking	Si trackers	building on silicon consortium
	Gaseous trackers	
calorimetry	backward ECal	building on EEMCal consortium
	backward HCal	
	barrel ECal	
	barrel HCal	
	forward ECal	
	forward HCal	
	HCal insert	presently not in the reference detector
Cherenkov PID	backward RICH	
	DIRC	
	dRICH	
ToF	barrel AC-LGADs	
	forward AC-LGADs	
far forward	tracking (RPs, off-momentum)	from conferring with the existing conveners
	B0	
	ZDC	
far backward	Lumi Pair Spectrometer	following a suggestion of the existing conveners
	Lumi calorimeters	
	low Q^2 taggers	

DSC scheme (*draft*)

DWG	DSC	Notes
(now)	(in management plan)	
tracking	Si trackers	building on silicon consortium
	Gaseous trackers	
calorimetry	backward ECal	building on EEMCal consortium
	backward HCal	
	barrel ECal	
	UNCH	
ToF	barrel AC-LGADs	
	forward AC-LGADs	
far forward	tracking (RPs, off-momentum)	from conferring with the existing conveners
	B0	
	ZDC	
far backward	Lumi Pair Spectrometer	following a suggestion of the existing conveners
	Lumi calorimeters	
	low Q ² taggers	

Just a draft:
Your input to improve the scheme is welcome

Specific of Calorimetry subsystems

- Barrel ECal option to be selected
 - **A free parameters in this community that will be defined ~ mid April**
 - The formation of the related DSC can come only after that: this is fully understood
- Clear need of cross-cutting efforts (no duplications !)
 - **A list (probably incomplete)**
 - SiPMs and related FEE in common to all the calorimetry subsystems (apart, in case, imaging layers) → a single R&D, which includes FEE identification
 - Communalities/differences in the monitoring systems
 - Communalities/differences in the reconstruction software of all sampling calorimetry
 - Dedicated cross-cutting teams?
 - Preserve the WG in light (meeting load) as forum for discussion?

SOME QUESTIONS FOR THE TODAY DISCUSSION

- Draft list of Calorimetry DSCs
 - Any obvious need for a different list ?
- Preliminary list of groups in the DSCs
 - **First order estimation of the workforce available**
 - **Who takes care of what?**
 - **What is needed and not taken care by anyone so far?**
 - **Expected in-kind? For which items ?**
- Cross-cutting
 - Task forces vs a light WG ?