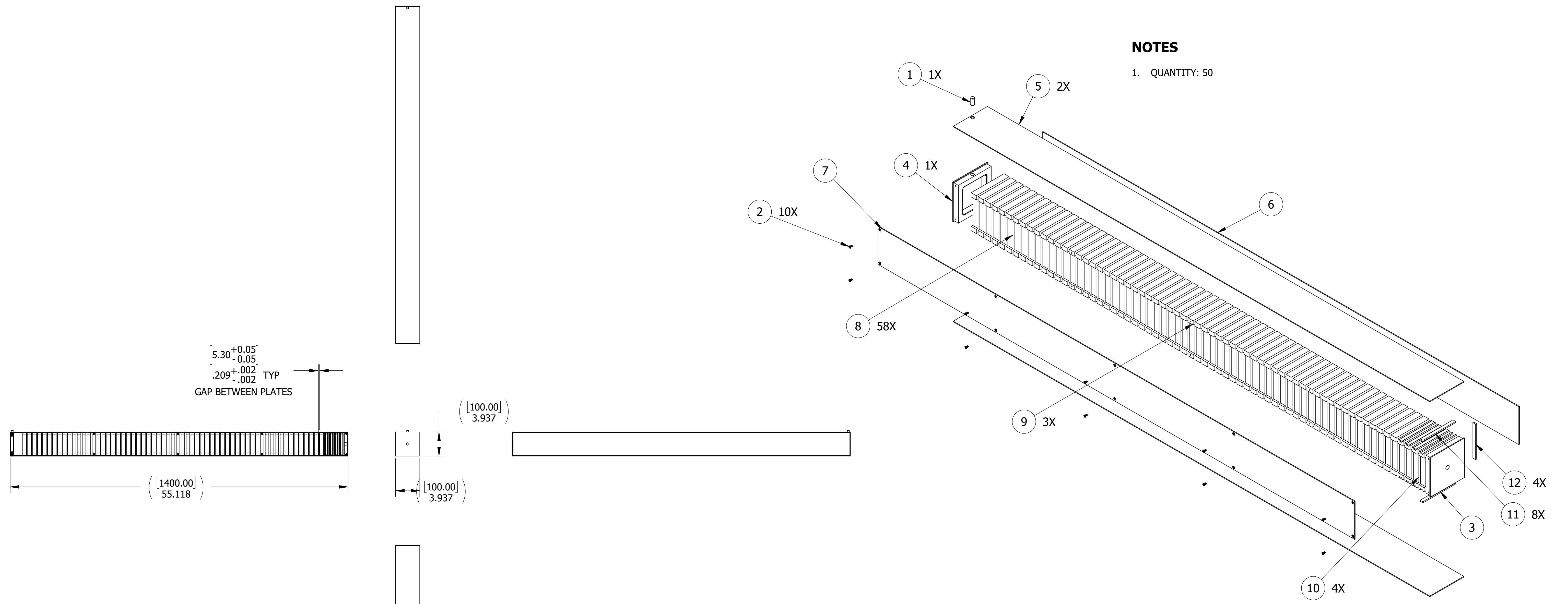


NO REPRESENTATION OR WARRANTY, EXPRESSED OR IMPLIED, IS MADE AS TO THE ACCURACY, COMPLETENESS OR USEFULNESS OF THE INFORMATION OR STATEMENTS CONTAINED IN THESE DRAWINGS, OR THAT THE DISCLOSURE OF ANY INFORMATION, APPARATUS, METHOD OR PROCESS DISCLOSED MAY NOT INFRINGE PRIVATE RIGHTS OF OTHERS. NO LIABILITY IS ASSUMED WITH RESPECT TO THE USE OF, OR FOR DAMAGES RESULTING FROM THE USE OF, ANY INFORMATION, APPARATUS, METHOD OR PROCESS DISCLOSED IN THESE DRAWINGS. DRAWINGS MADE AVAILABLE FOR INFORMATION TO BIDDER ARE NOT TO BE USED FOR OTHER PURPOSES AND ARE TO BE RETURNED UPON REQUEST OF THE FORWARDING CONTRACTOR.

NOTES

1. QUANTITY: 50

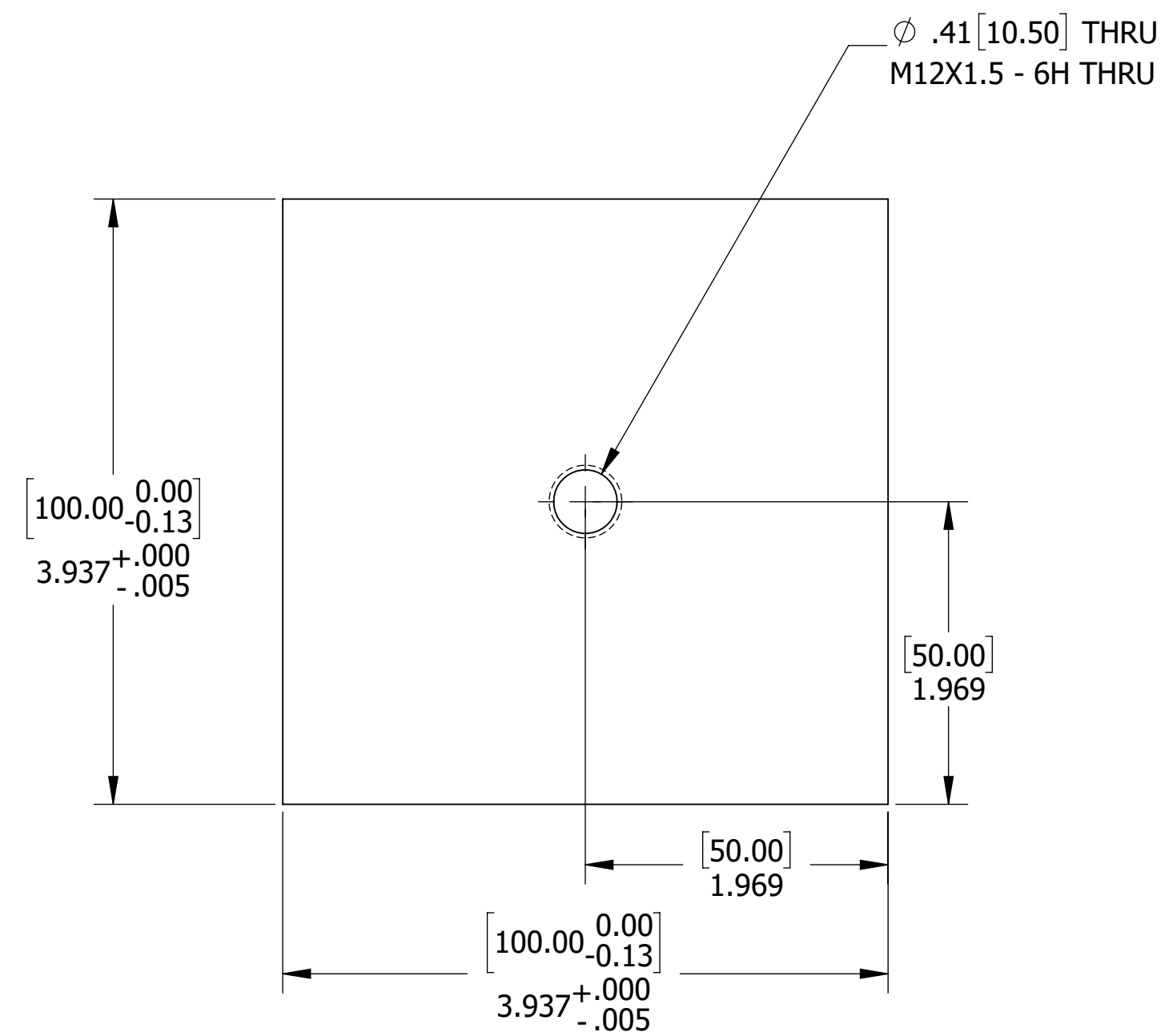
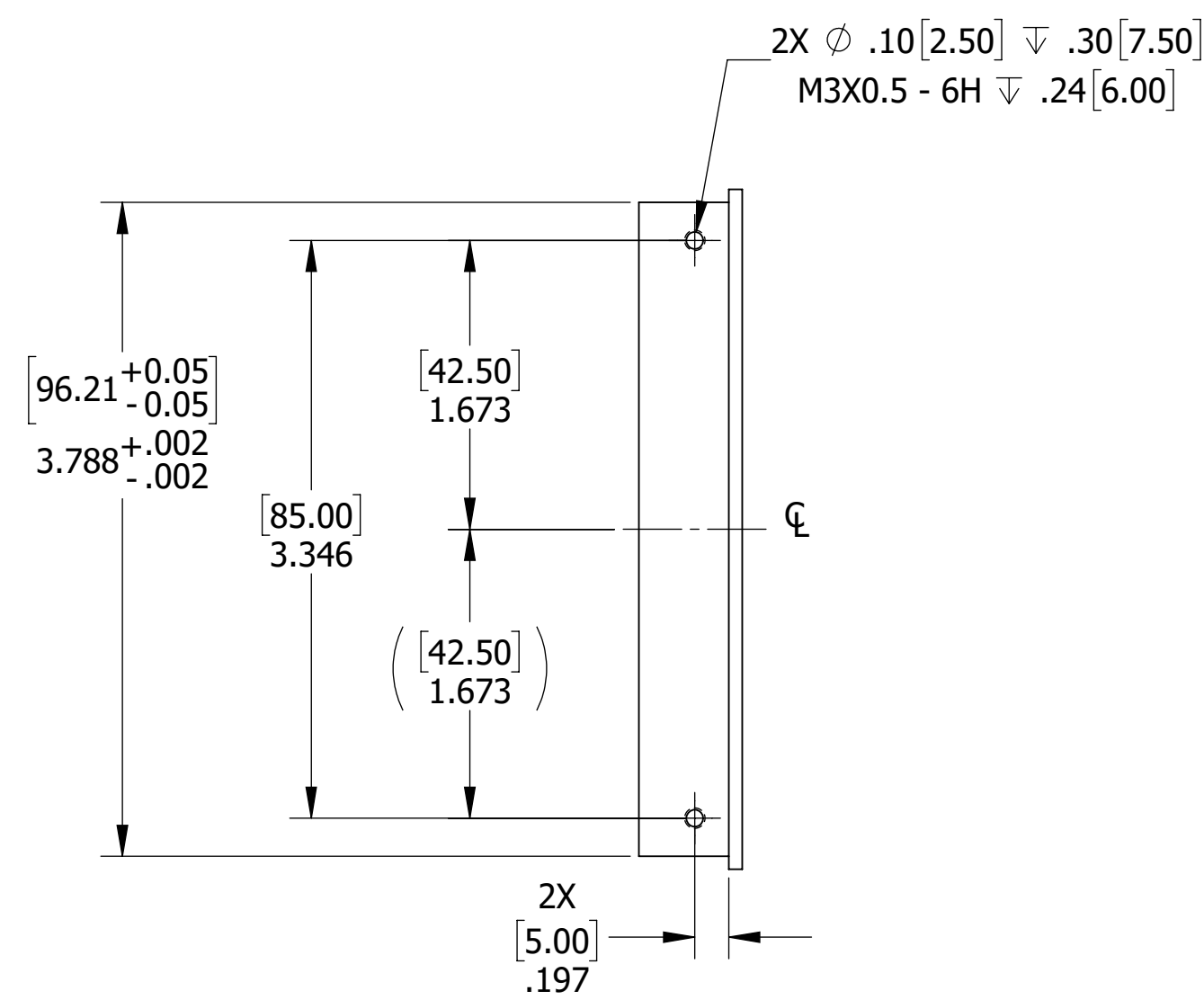
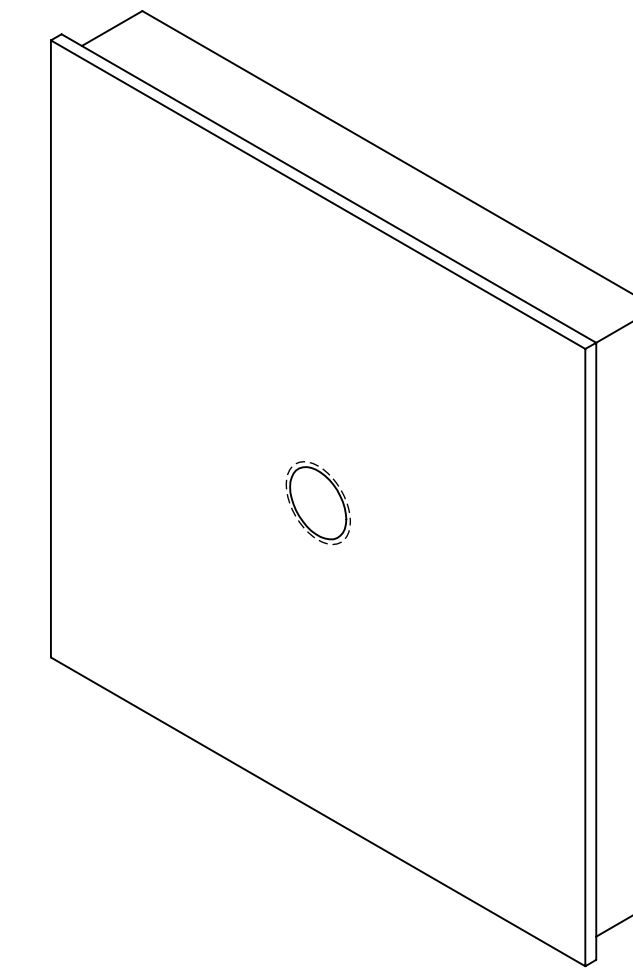
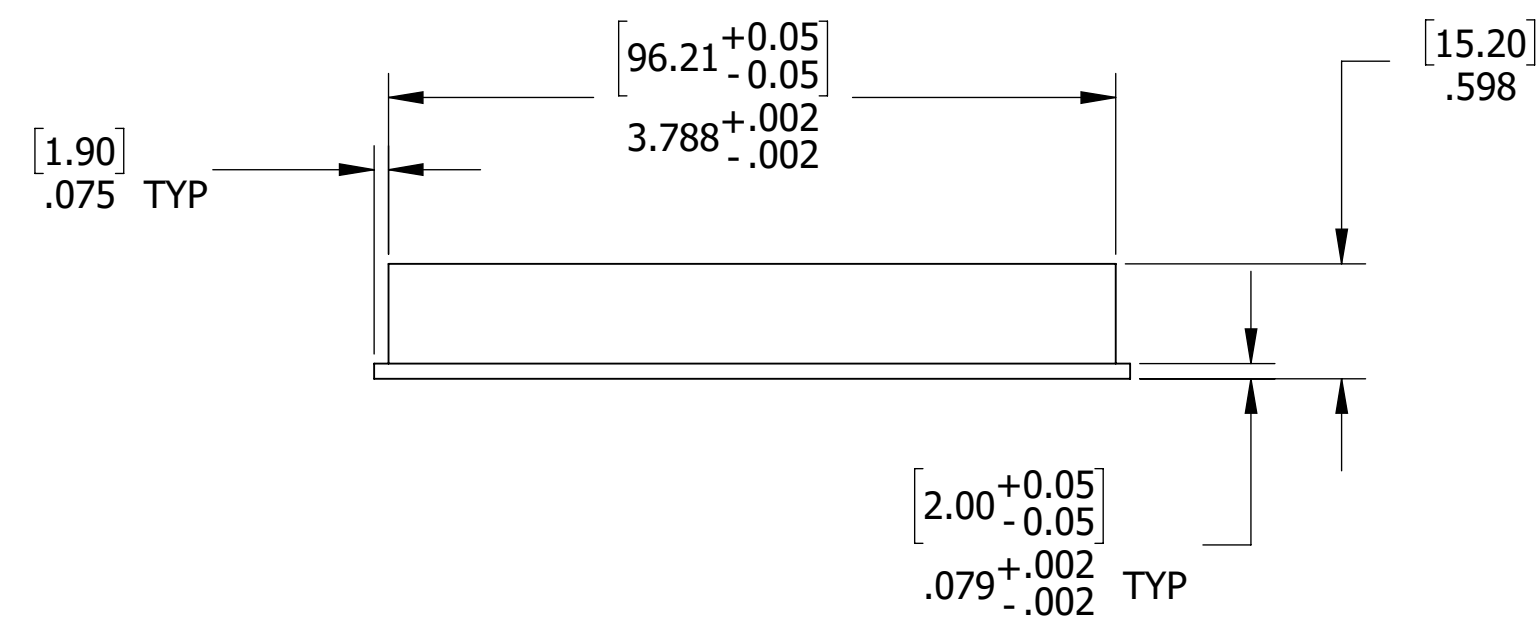


ITEM	QTY.	NAME/PART NO	MATERIAL	DESCRIPTION	DWG
12	4	SHORT SHIM	CARBON STEEL	SHEET METAL 11 GA	EPIC-310
11	8	LONG SHIM	CARBON STEEL	SHEET METAL 11 GA	EPIC-309
10	4	TUNGSTEN ABSORBER PLATE	TUNGSTEN (W 6Ni-4Cu)	PLATE	EPIC-308
9	3	STEEL ABSORBER PLATE, TAPPED	CARBON STEEL	PLATE	EPIC-307
8	58	STEEL ABSORBER PLATE	CARBON STEEL	PLATE	EPIC-306
7	1	PCB COVER	CARBON STEEL	SHEET METAL 14 GA	EPIC-305
6	1	SIDE COVER	CARBON STEEL	SHEET METAL 14 GA	EPIC-304
5	2	TOP / BOTTOM PLATE	CARBON STEEL	SHEET METAL 14 GA	EPIC-303
4	1	BACK PLATE	CARBON STEEL	PLATE	EPIC-302
3	1	FRONT PLATE	CARBON STEEL	PLATE	EPIC-301
2	10	MCMaster_90358A001	ALLOY STEEL	M3-0.5 X 6MM LG LOW SHCS	N/A
1	1	MCMaster_91595A558	STEEL	8MM X 20MM DOWEL PIN	N/A

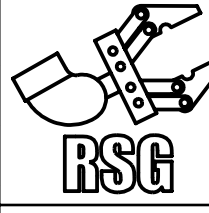
QUALITY VERIFICATION REQUIREMENTS DOCUMENTS MATERIAL MILL TEST REPORT LEAK TEST REPORT CLEANING CERT WELD / BRAZE INSPECTION REPORT HEAT TREAT REPORT DIMENSIONAL REPORT x MATERIAL SELLER CERT x FUNCTIONAL TEST REPORT DEVIATION REQUEST x NONCONFORMANCE REPORT x		THIRD-ANGLE PROJECTION UNLESS OTHERWISE NOTED DIMENSIONS ARE IN INCHES INTERPRET DIMENSIONS AND TOLERANCES PER ASME Y14.5M BREAK SHARP CORNERS AND REMOVE ALL BURRS DEFAULT TOLERANCES LINEAR .XX = ±.100 ANGLUAR .X/XX = ±.010 .X.XXX = ±.005 DO NOT SCALE DRAWING	<table border="1"> <thead> <tr> <th>APPROVALS</th> <th>DATE</th> </tr> </thead> <tbody> <tr> <td>DES EJ FOUNTAIN</td> <td>03/09/2023</td> </tr> <tr> <td>DRW EJ FOUNTAIN</td> <td>03/09/2023</td> </tr> <tr> <td>CHK JP SLADE</td> <td>03/09/2023</td> </tr> <tr> <td>ENG EJ FOUNTAIN</td> <td>03/09/2023</td> </tr> <tr> <td>QA</td> <td></td> </tr> </tbody> </table>	APPROVALS	DATE	DES EJ FOUNTAIN	03/09/2023	DRW EJ FOUNTAIN	03/09/2023	CHK JP SLADE	03/09/2023	ENG EJ FOUNTAIN	03/09/2023	QA		THIS DRAWING IS THE PROPERTY OF OAK RIDGE NATIONAL LABORATORY OPERATED FOR THE U.S. DEPARTMENT OF ENERGY UNDER CONTRACT DE-AC05-00OR22725 OAK RIDGE, TN REMOTE SYSTEMS GROUP EPIC TOWER ASSEMBLY TOWER BODY ASSEMBLY TOTAL WEIGHT LBS THIS DRAWING PRODUCED USING SolidWorks SIZE D NEXT ASSY N/A SCALE 1:8 NAME 4M TOWER WELDMENT DWG NO. EPIC-300 REV 0 SHEET 1 of 1
APPROVALS	DATE															
DES EJ FOUNTAIN	03/09/2023															
DRW EJ FOUNTAIN	03/09/2023															
CHK JP SLADE	03/09/2023															
ENG EJ FOUNTAIN	03/09/2023															
QA																

DWG NO. EPIC-300
CAD FILE: 4M Module Body_Assembly

NO REPRESENTATION OR WARRANTY, EXPRESSED OR IMPLIED, IS MADE AS TO THE ACCURACY, COMPLETENESS OR USEFULNESS OF THE INFORMATION OR STATEMENTS CONTAINED IN THESE DRAWINGS, OR THAT THE DISCLOSURE OF ANY INFORMATION, APPARATUS, METHOD OR PROCESS DISCLOSED MAY NOT INFRINGE PRIVATE RIGHTS OF OTHERS. NO LIABILITY IS ASSUMED WITH RESPECT TO THE USE OF, OR FOR DAMAGES RESULTING FROM THE USE OF, ANY INFORMATION, APPARATUS, METHOD OR PROCESS DISCLOSED IN THESE DRAWINGS. DRAWINGS MADE AVAILABLE FOR INFORMATION TO BIDDER ARE NOT TO BE USED FOR OTHER PURPOSES AND ARE TO BE RETURNED UPON REQUEST OF THE FORWARDING CONTRACTOR.

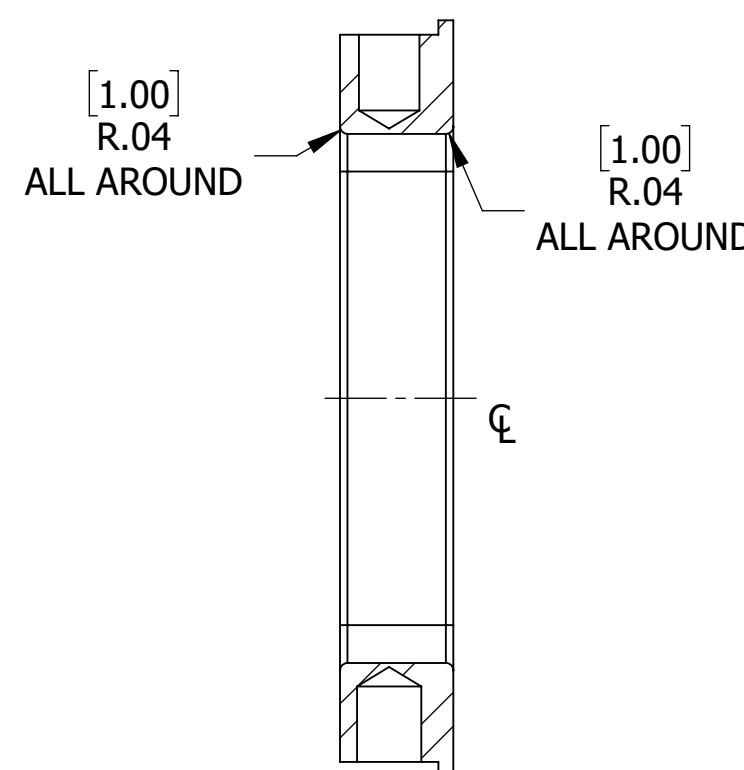
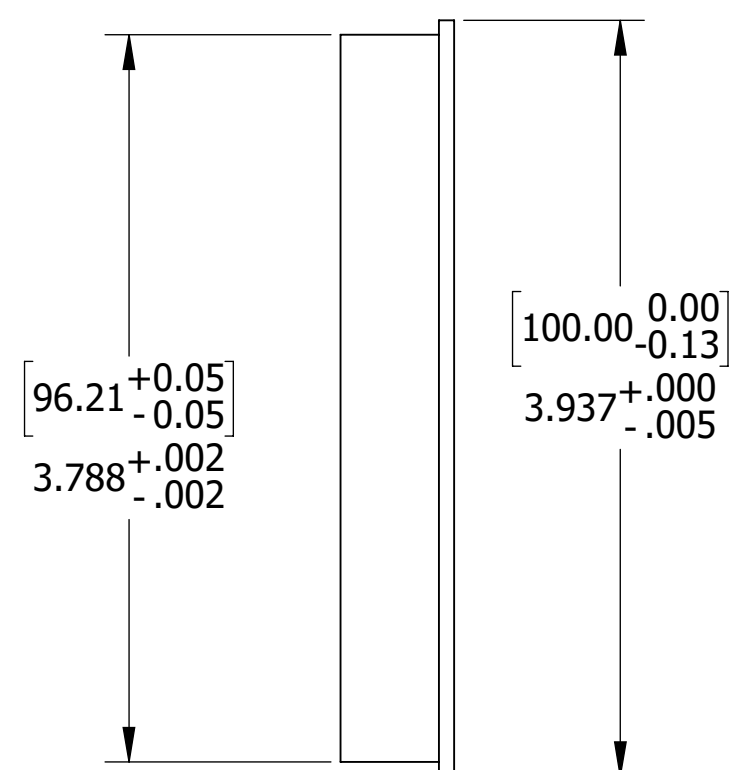
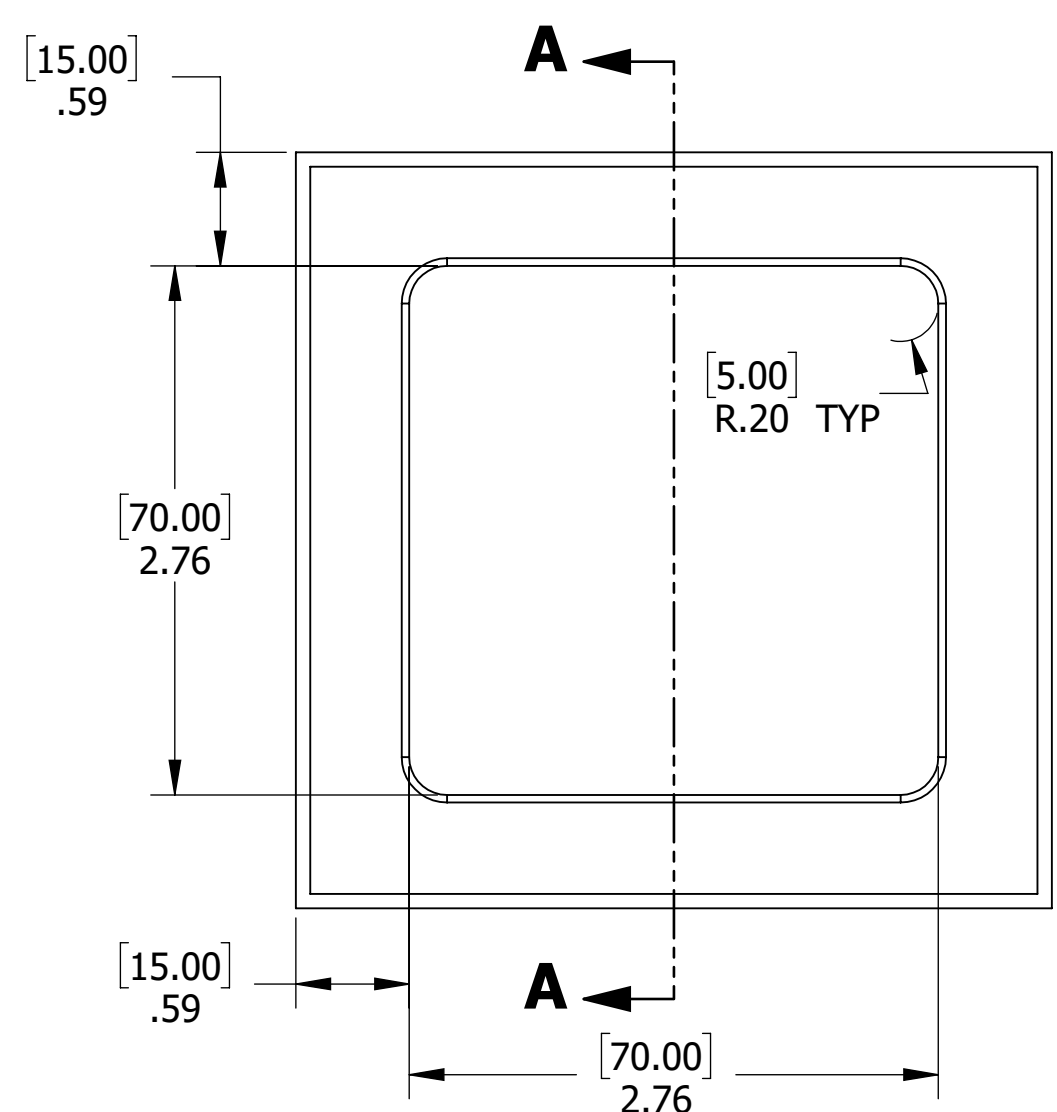
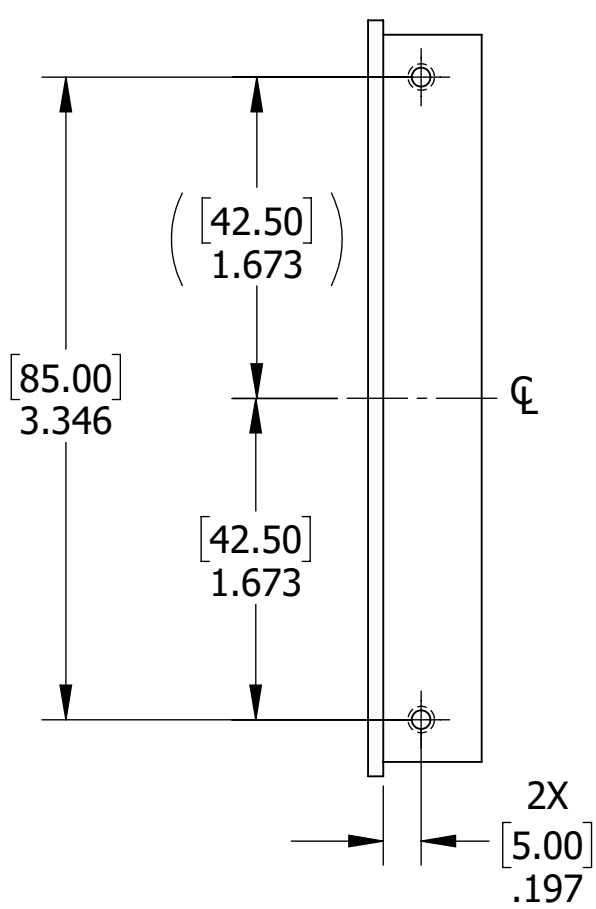
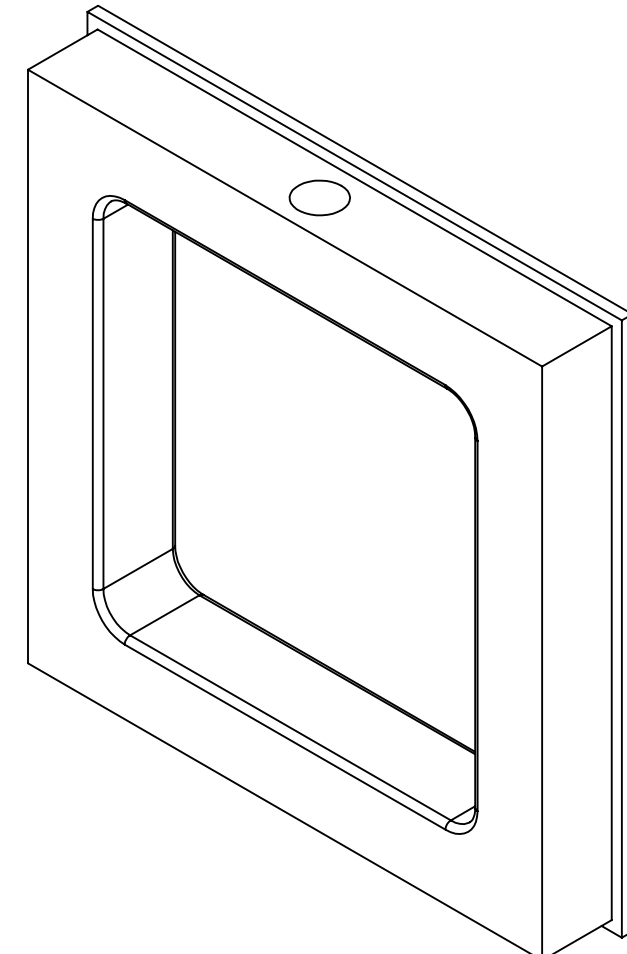
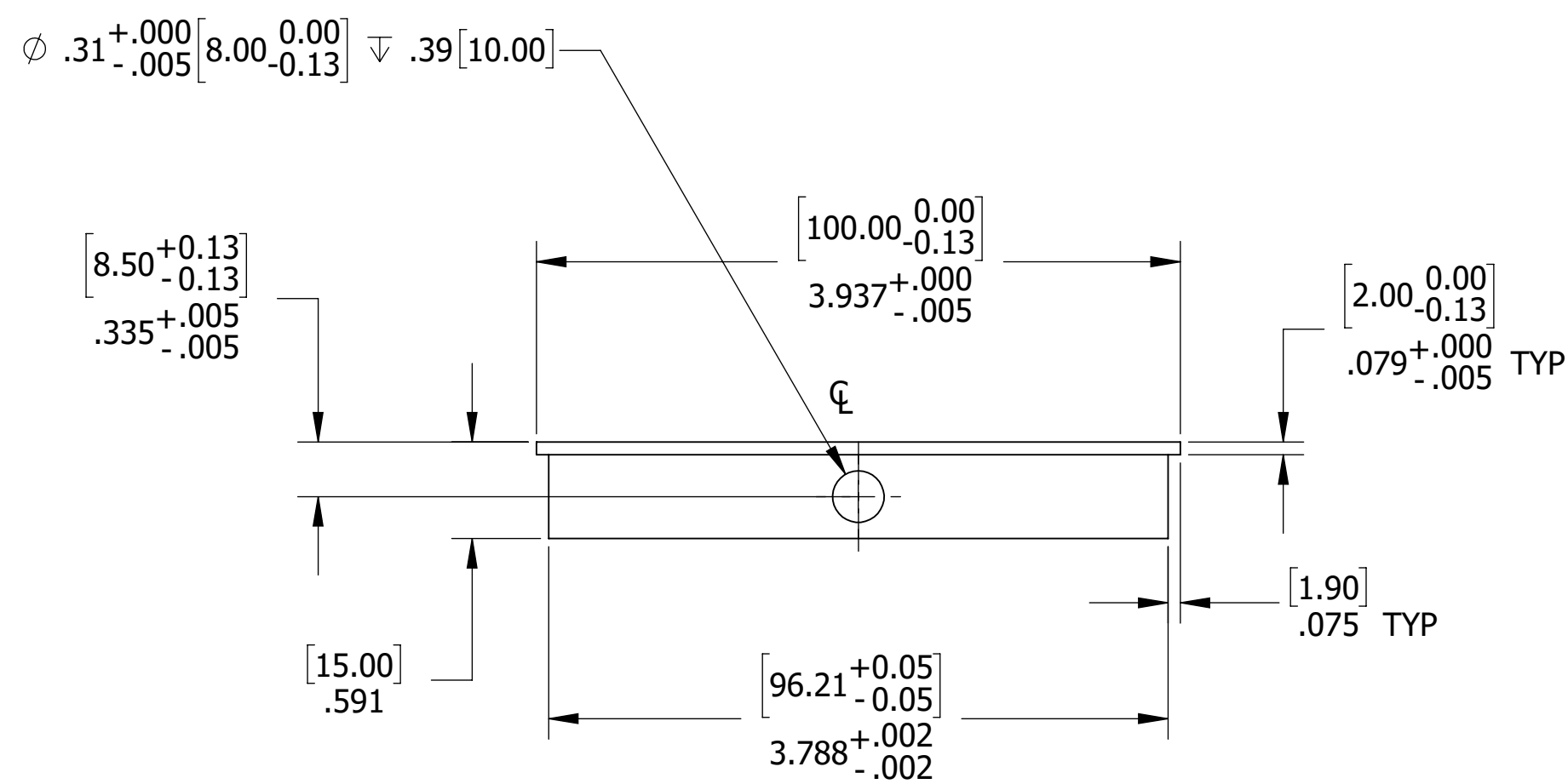


MATERIAL: CARBON STEEL

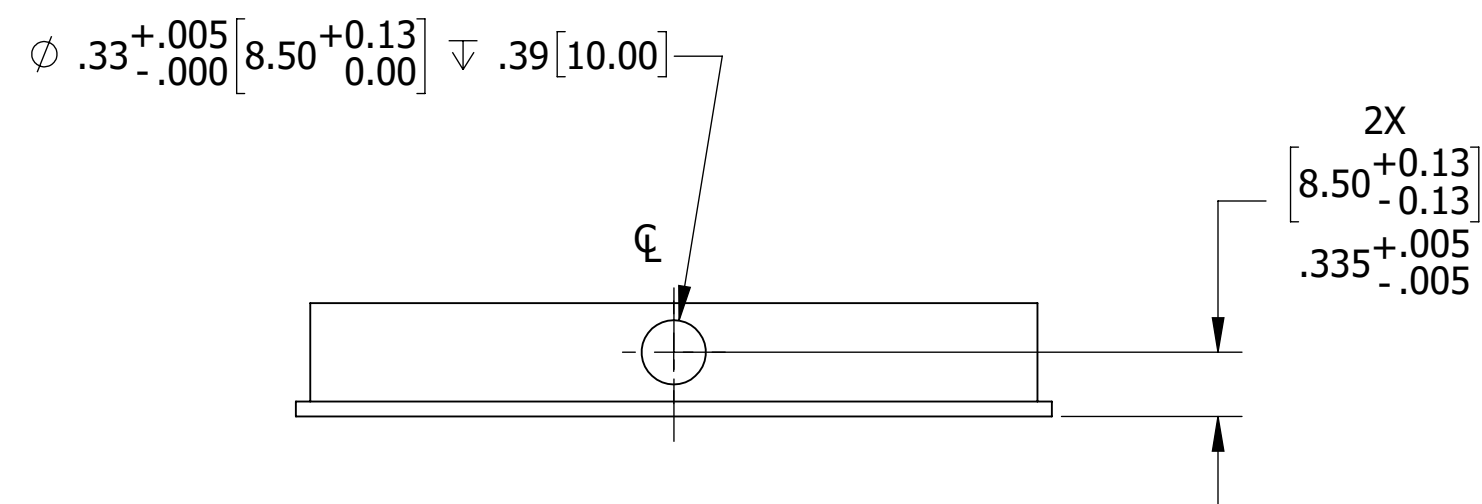
QUALITY VERIFICATION REQUIREMENTS DOCUMENTS		THIRD-ANGLE PROJECTION	APPROVALS		DATE		THIS DRAWING IS THE PROPERTY OF OAK RIDGE NATIONAL LABORATORY OPERATED FOR THE U.S. DEPARTMENT OF ENERGY UNDER CONTRACT DE-AC05-00OR22725 OAK RIDGE, TN		
DOCUMENT	STATUS		DES	CHK	DATE		SIZE	NAME	SHEET
MATERIAL MILL TEST REPORT	x	UNLESS OTHERWISE NOTED DIMENSIONS ARE IN INCHES INTERPRET DIMENSIONS AND TOLERANCES PER ASME Y14.5M BREAK SHARP CORNERS AND REMOVE ALL BURRS DEFAULT TOLERANCES LINEAR .XX = ±.100 ANGULAR .XX = ±.1/2 XXX = ±.010 XXXX = ±.005 DO NOT SCALE DRAWING	EJ FOUNTAIN		03/09/2023	D EPIC-200	FRONT PLATE	1 of 1	
LEAK TEST REPORT			DRW	EJ FOUNTAIN	03/09/2023				
CLEANING CERT			CHK	JP SLADE	03/09/2023				
WELD / BRAZE INSPECTION REPORT			ENG	EJ FOUNTAIN	03/09/2023				
HEAT TREAT REPORT			QA						
DIMENSIONAL REPORT			TOTAL WEIGHT		2.4519 LBS	SCALE	1:1		
MATERIAL SELLER CERT			THIS DRAWING PRODUCED USING		SolidWorks	REV	0		
FUNCTIONAL TEST REPORT			DWG NO.		EPIC-301	SHEET 1 of 1			
DEVIATION REQUEST	x		NAME		FRONT PLATE				
NONCONFORMANCE REPORT	x		SHEET		1 of 1				

DWG NO. EPIC-301
CAD FILE: 4M Tower Front Plate

NO REPRESENTATION OR WARRANTY, EXPRESSED OR IMPLIED, IS MADE AS TO THE ACCURACY, COMPLETENESS OR USEFULNESS OF THE INFORMATION OR STATEMENTS CONTAINED IN THESE DRAWINGS, OR THAT THE DISCLOSURE OF ANY INFORMATION, APPARATUS, METHOD OR PROCESS DISCLOSED MAY NOT INFRINGE PRIVATE RIGHTS OF OTHERS. NO LIABILITY IS ASSUMED WITH RESPECT TO THE USE OF, OR FOR DAMAGES RESULTING FROM THE USE OF, ANY INFORMATION, APPARATUS, METHOD OR PROCESS DISCLOSED IN THESE DRAWINGS. DRAWINGS MADE AVAILABLE FOR INFORMATION TO BIDDER ARE NOT TO BE USED FOR OTHER PURPOSES AND ARE TO BE RETURNED UPON REQUEST OF THE FORWARDING CONTRACTOR.



SECTION A-A



MATERIAL: CARBON STEEL

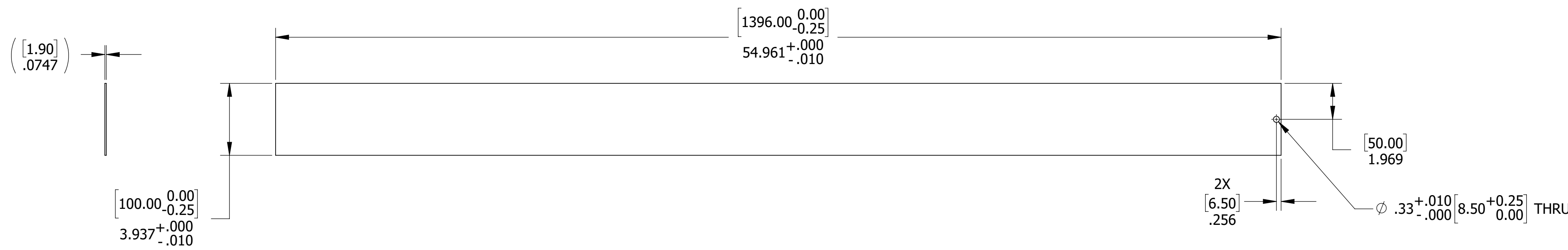
QUALITY VERIFICATION REQUIREMENTS DOCUMENTS		THIRD-ANGLE PROJECTION	APPROVALS		DATE	RSG	THIS DRAWING IS THE PROPERTY OF OAK RIDGE NATIONAL LABORATORY OPERATED FOR THE U.S. DEPARTMENT OF ENERGY UNDER CONTRACT DE-AC05-00OR22725 OAK RIDGE, TN			
DESCRIPTION	STATUS		DESIGNER	DATE	DATE		REVISION	DESCRIPTION	DATE	
MATERIAL MILL TEST REPORT	X	UNLESS OTHERWISE NOTED DIMENSIONS ARE IN INCHES INTERPRET DIMENSIONS AND TOLERANCES PER ASME Y14.5M BREAK SHARP CORNERS AND REMOVE ALL BURRS DEFAULT TOLERANCES LINEAR .XX = ±.100 .XXX = ±.010 .XXXX = ±.005 DO NOT SCALE DRAWING	DES	EJ FOUNTAIN	03/16/2023	EPIC TOWER ASSEMBLY BACK PLATE	SIZE	NEXT ASSY	DWG NO.	
LEAK TEST REPORT			DRW	EJ FOUNTAIN	03/16/2023		SCALE	1:1	NAME	BACK PLATE
CLEANING CERT			CHK	JP SLADE	03/24/2023		REV	0		
WELD / BRAZE INSPECTION REPORT			ENG	EJ FOUNTAIN	03/16/2023					
HEAT TREAT REPORT			QA							
DIMENSIONAL REPORT										
MATERIAL SELLER CERT										
FUNCTIONAL TEST REPORT										
DEVIATION REQUEST	X									
NONCONFORMANCE REPORT	X									
			TOTAL WEIGHT		1.1459 LBS					
			THIS DRAWING PRODUCED USING		SolidWorks					

DWG NO. EPIC-302
CAD FILE: 4M Tower Back Plate

NO REPRESENTATION OR WARRANTY, EXPRESSED OR IMPLIED, IS MADE AS TO THE ACCURACY, COMPLETENESS OR USEFULNESS OF THE INFORMATION OR STATEMENTS CONTAINED IN THESE DRAWINGS, OR THAT THE DISCLOSURE OF ANY INFORMATION, APPARATUS, METHOD OR PROCESS DISCLOSED MAY NOT INFRINGE PRIVATE RIGHTS OF OTHERS. NO LIABILITY IS ASSUMED WITH RESPECT TO THE USE OF, OR FOR DAMAGES RESULTING FROM THE USE OF, ANY INFORMATION, APPARATUS, METHOD OR PROCESS DISCLOSED IN THESE DRAWINGS. DRAWINGS MADE AVAILABLE FOR INFORMATION TO BIDDER ARE NOT TO BE USED FOR OTHER PURPOSES AND ARE TO BE RETURNED UPON REQUEST OF THE FORWARDING CONTRACTOR.

NOTES

1. QUANTITY: 2.



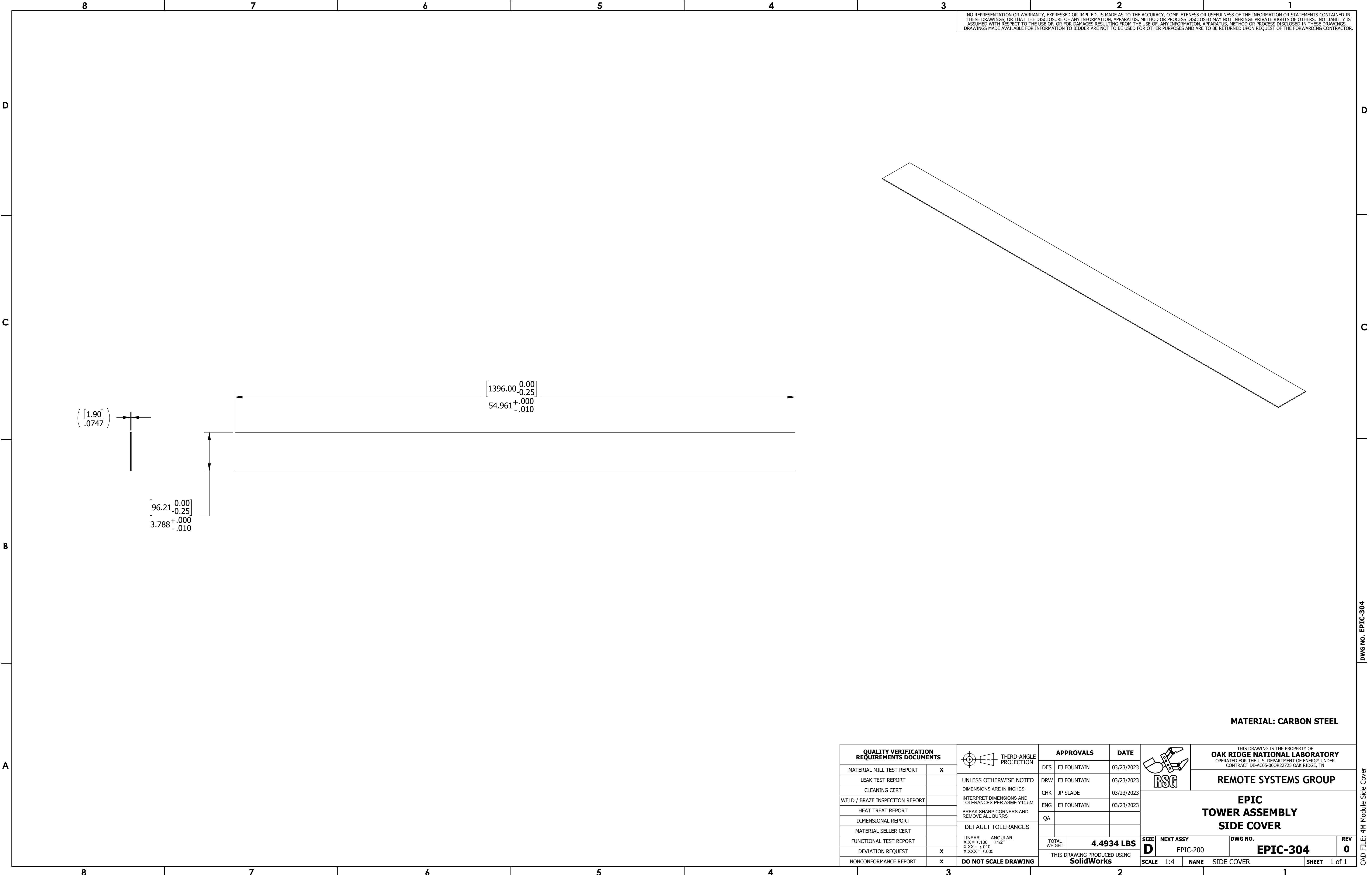
MATERIAL: CARBON STEEL

QUALITY VERIFICATION REQUIREMENTS DOCUMENTS		THIRD-ANGLE PROJECTION	APPROVALS		DATE		THIS DRAWING IS THE PROPERTY OF OAK RIDGE NATIONAL LABORATORY OPERATED FOR THE U.S. DEPARTMENT OF ENERGY UNDER CONTRACT DE-AC05-00OR22725 OAK RIDGE, TN				
DESCRIPTION	STATUS		DESIGNER	DATE	DATE		SIZE	NAME	DWG NO.	REV	
MATERIAL MILL TEST REPORT	x	UNLESS OTHERWISE NOTED DIMENSIONS ARE IN INCHES INTERPRET DIMENSIONS AND TOLERANCES PER ASME Y14.5M BREAK SHARP CORNERS AND REMOVE ALL BURRS DEFAULT TOLERANCES LINEAR .XX = ±.100 ANGULAR .XX = ±1/2 XXX = ±.010 XXXX = ±.005 DO NOT SCALE DRAWING	DES	EJ FOUNTAIN	03/16/2023	D	EPIC-200	EPIC-303	0		
LEAK TEST REPORT			DRW	EJ FOUNTAIN	03/16/2023						
CLEANING CERT			CHK	JP SLADE	03/24/2023						
WELD / BRAZE INSPECTION REPORT			ENG	EJ FOUNTAIN	03/16/2023						
HEAT TREAT REPORT			QA								
DIMENSIONAL REPORT			TOTAL WEIGHT		4.6104 LBS	SCALE	1:4	NAME	TOP / BOTTOM PLATE	SHEET	1 of 1
MATERIAL SELLER CERT			THIS DRAWING PRODUCED USING		SolidWorks						
FUNCTIONAL TEST REPORT											
DEVIATION REQUEST	x										
NONCONFORMANCE REPORT	x										

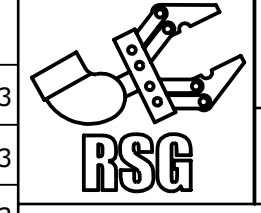
EPIC TOWER ASSEMBLY TOP / BOTTOM COVER

DWG NO. EPIC-303
CAD FILE: 4M Module Top Bottom Plate

NO REPRESENTATION OR WARRANTY, EXPRESSED OR IMPLIED, IS MADE AS TO THE ACCURACY, COMPLETENESS OR USEFULNESS OF THE INFORMATION OR STATEMENTS CONTAINED IN THESE DRAWINGS, OR THAT THE DISCLOSURE OF ANY INFORMATION, APPARATUS, METHOD OR PROCESS DISCLOSED MAY NOT INFRINGE PRIVATE RIGHTS OF OTHERS. NO LIABILITY IS ASSUMED WITH RESPECT TO THE USE OF, OR FOR DAMAGES RESULTING FROM THE USE OF, ANY INFORMATION, APPARATUS, METHOD OR PROCESS DISCLOSED IN THESE DRAWINGS. DRAWINGS MADE AVAILABLE FOR INFORMATION TO BIDDER ARE NOT TO BE USED FOR OTHER PURPOSES AND ARE TO BE RETURNED UPON REQUEST OF THE FORWARDING CONTRACTOR.



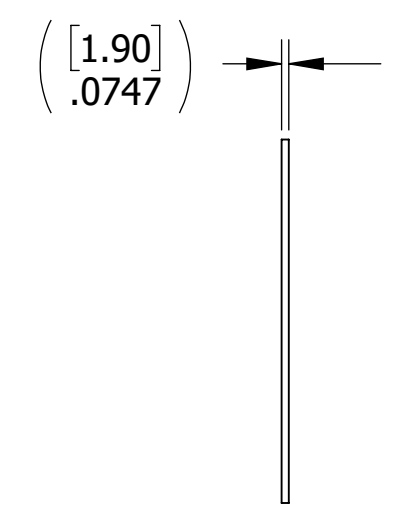
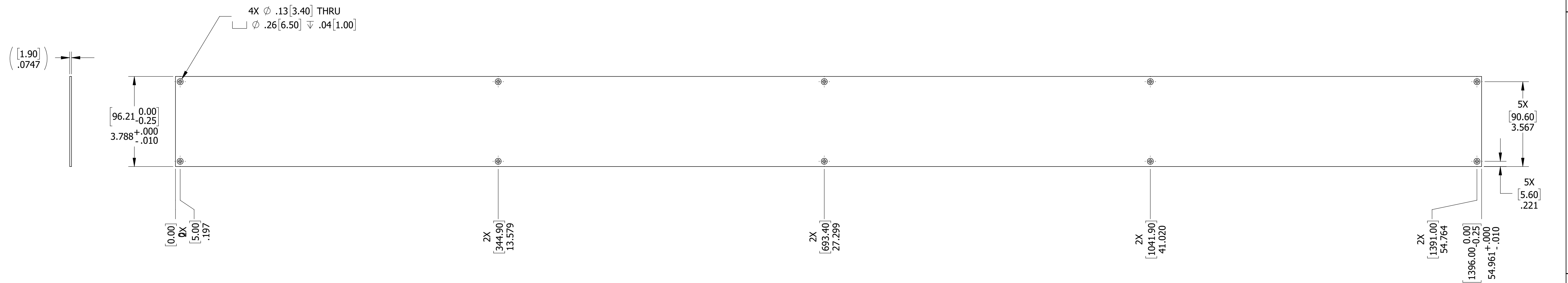
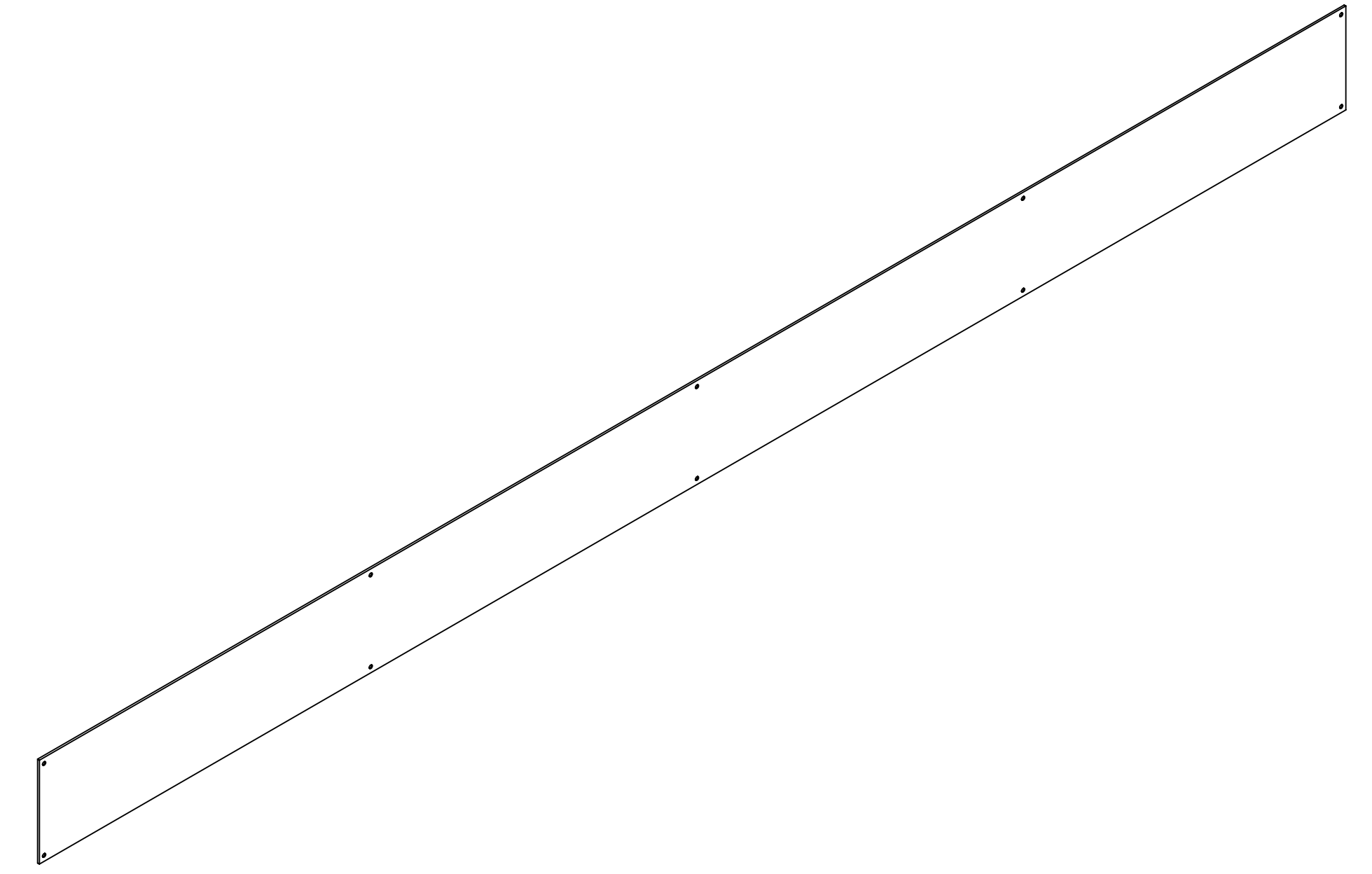
MATERIAL: CARBON STEEL

QUALITY VERIFICATION REQUIREMENTS DOCUMENTS		THIRD-ANGLE PROJECTION	APPROVALS		DATE		THIS DRAWING IS THE PROPERTY OF OAK RIDGE NATIONAL LABORATORY OPERATED FOR THE U.S. DEPARTMENT OF ENERGY UNDER CONTRACT DE-AC05-00OR22725 OAK RIDGE, TN				
DESCRIPTION	STATUS		DESIGNER	DATE	DATE		SIZE	NEXT ASSY	DWG NO.	REV	
MATERIAL MILL TEST REPORT	x	UNLESS OTHERWISE NOTED DIMENSIONS ARE IN INCHES INTERPRET DIMENSIONS AND TOLERANCES PER ASME Y14.5M BREAK SHARP CORNERS AND REMOVE ALL BURRS DEFAULT TOLERANCES LINEAR .XX = ±.100 ANGULAR .X/12 .XXX = ±.010 .XXXX = ±.005 DO NOT SCALE DRAWING	DES	EJ FOUNTAIN	03/23/2023	D	EPIC-200	EPIC-304	0		
LEAK TEST REPORT			DRW	EJ FOUNTAIN	03/23/2023						
CLEANING CERT			CHK	JP SLADE	03/23/2023						
WELD / BRAZE INSPECTION REPORT			ENG	EJ FOUNTAIN	03/23/2023						
HEAT TREAT REPORT			QA								
DIMENSIONAL REPORT			TOTAL WEIGHT		4.4934 LBS	SCALE	1:4	NAME	SIDE COVER	SHEET	1 of 1
MATERIAL SELLER CERT			THIS DRAWING PRODUCED USING		SolidWorks						
FUNCTIONAL TEST REPORT											
DEVIATION REQUEST	x										
NONCONFORMANCE REPORT	x										

EPIC TOWER ASSEMBLY SIDE COVER

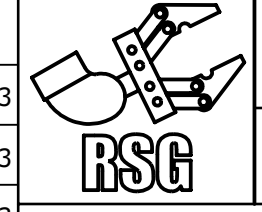
DWG NO. EPIC-304
CAD FILE: 4M Module Side Cover

NO REPRESENTATION OR WARRANTY, EXPRESSED OR IMPLIED, IS MADE AS TO THE ACCURACY, COMPLETENESS OR USEFULNESS OF THE INFORMATION OR STATEMENTS CONTAINED IN THESE DRAWINGS, OR THAT THE DISCLOSURE OF ANY INFORMATION, APPARATUS, METHOD OR PROCESS DISCLOSED MAY NOT INFRINGE PRIVATE RIGHTS OF OTHERS. NO LIABILITY IS ASSUMED WITH RESPECT TO THE USE OF, OR FOR DAMAGES RESULTING FROM THE USE OF, ANY INFORMATION, APPARATUS, METHOD OR PROCESS DISCLOSED IN THESE DRAWINGS. DRAWINGS MADE AVAILABLE FOR INFORMATION TO BIDDER ARE NOT TO BE USED FOR OTHER PURPOSES AND ARE TO BE RETURNED UPON REQUEST OF THE FORWARDING CONTRACTOR.



4X \varnothing .13[3.40] THRU
 \varnothing .26[6.50] ∇ .04[1.00]

MATERIAL: CARBON STEEL

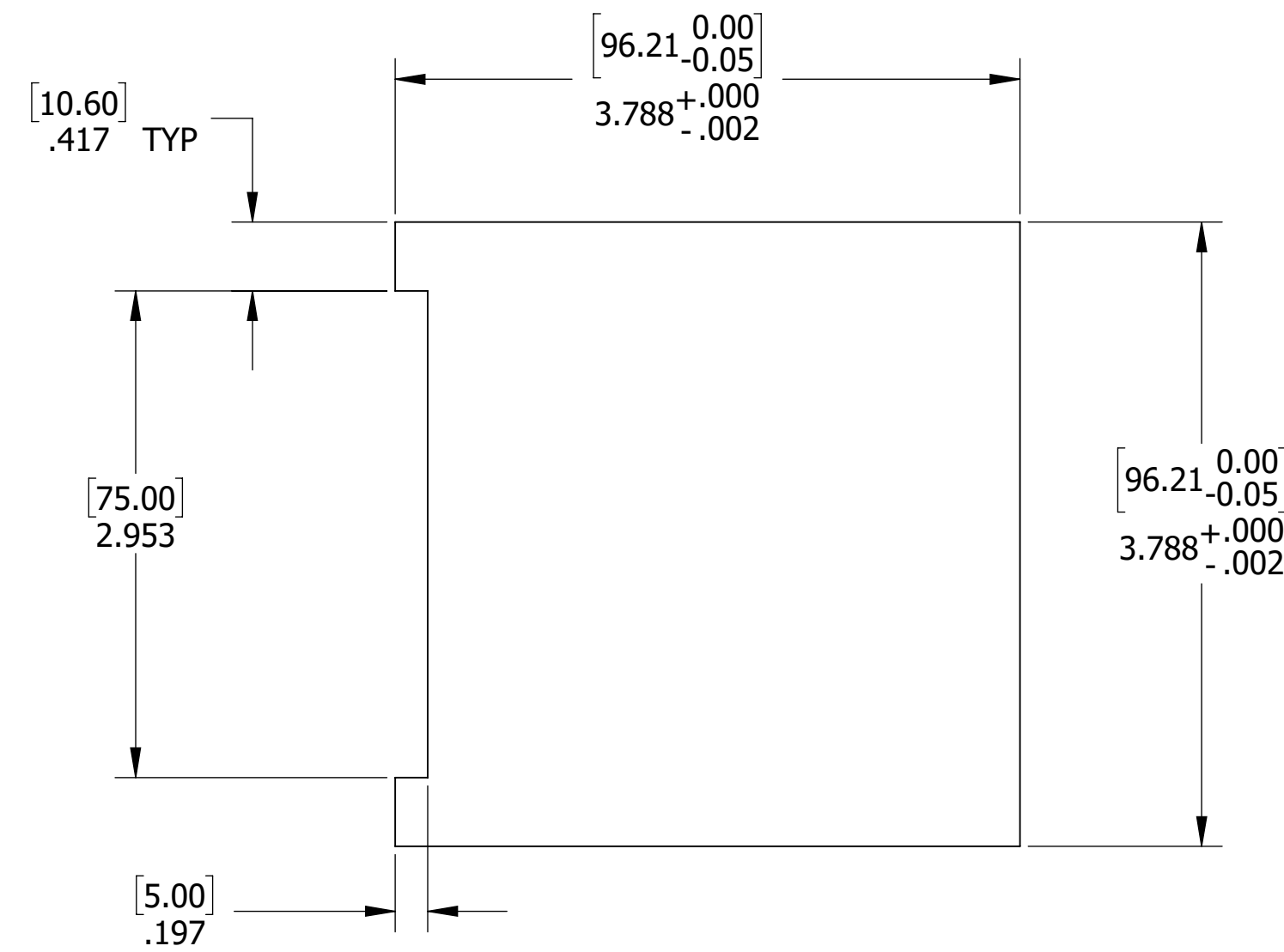
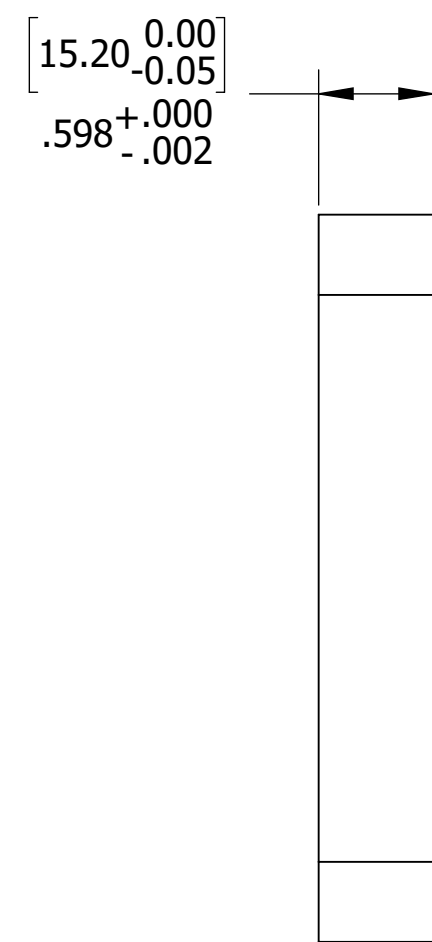
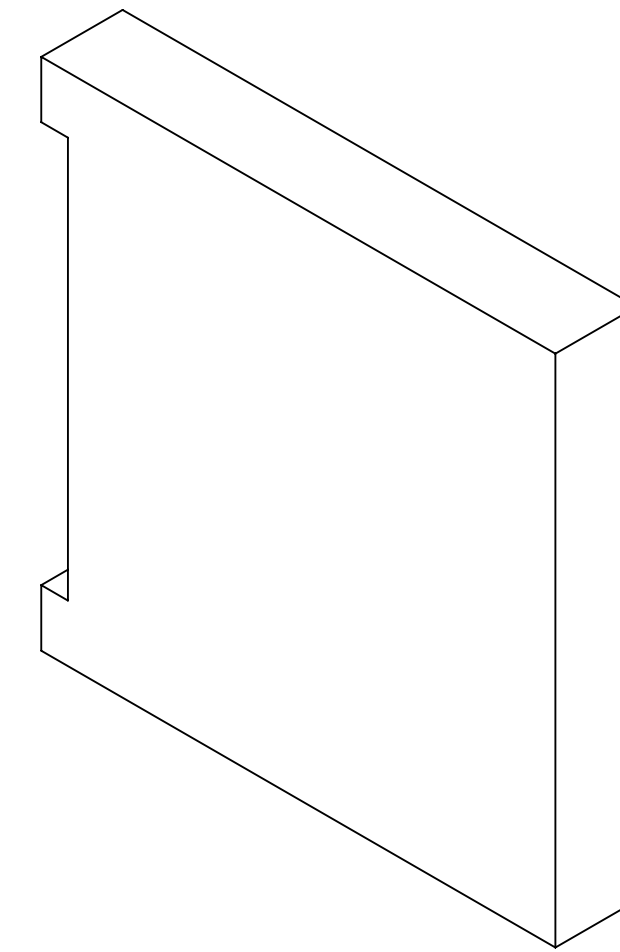
QUALITY VERIFICATION REQUIREMENTS DOCUMENTS		THIRD-ANGLE PROJECTION	APPROVALS		DATE		THIS DRAWING IS THE PROPERTY OF OAK RIDGE NATIONAL LABORATORY OPERATED FOR THE U.S. DEPARTMENT OF ENERGY UNDER CONTRACT DE-AC05-00OR22725 OAK RIDGE, TN			
DESCRIPTION	STATUS		DESIGNER	DATE	DATE		SIZE	NAME	DWG NO.	REV
MATERIAL MILL TEST REPORT	x	UNLESS OTHERWISE NOTED DIMENSIONS ARE IN INCHES INTERPRET DIMENSIONS AND TOLERANCES PER ASME Y14.5M BREAK SHARP CORNERS AND REMOVE ALL BURRS DEFAULT TOLERANCES LINEAR .XX = ±.100 ANGLULAR .XX = ±.1/2 XXX = ±.010 XXXX = ±.005 DO NOT SCALE DRAWING	DES	EJ FOUNTAIN	03/17/2023	D	NEXT ASSY EPIC-200	EPIC-305	0	
LEAK TEST REPORT			DRW	EJ FOUNTAIN	03/17/2023					
CLEANING CERT			CHK	JP SLADE	03/24/2023					
WELD / BRAZE INSPECTION REPORT			ENG	EJ FOUNTAIN	03/17/2023					
HEAT TREAT REPORT			QA							
DIMENSIONAL REPORT			TOTAL WEIGHT		4.4862 LBS		SCALE	1:2	NAME	PCB COVER
MATERIAL SELLER CERT			THIS DRAWING PRODUCED USING		SolidWorks		SHEET	1 of 1		
FUNCTIONAL TEST REPORT			THIS DRAWING PRODUCED USING		SolidWorks					
DEVIATION REQUEST	x		THIS DRAWING PRODUCED USING		SolidWorks					
NONCONFORMANCE REPORT	x		THIS DRAWING PRODUCED USING		SolidWorks					

DWG NO. EPIC-305
 CAD FILE: 4M Module Side Cover PCB

NO REPRESENTATION OR WARRANTY, EXPRESSED OR IMPLIED, IS MADE AS TO THE ACCURACY, COMPLETENESS OR USEFULNESS OF THE INFORMATION OR STATEMENTS CONTAINED IN THESE DRAWINGS, OR THAT THE DISCLOSURE OF ANY INFORMATION, APPARATUS, METHOD OR PROCESS DISCLOSED MAY NOT INFRINGE PRIVATE RIGHTS OF OTHERS. NO LIABILITY IS ASSUMED WITH RESPECT TO THE USE OF, OR FOR DAMAGES RESULTING FROM THE USE OF, ANY INFORMATION, APPARATUS, METHOD OR PROCESS DISCLOSED IN THESE DRAWINGS. DRAWINGS MADE AVAILABLE FOR INFORMATION TO BIDDER ARE NOT TO BE USED FOR OTHER PURPOSES AND ARE TO BE RETURNED UPON REQUEST OF THE FORWARDING CONTRACTOR.

NOTES

1. QUANTITY: 58.



MATERIAL: CARBON STEEL

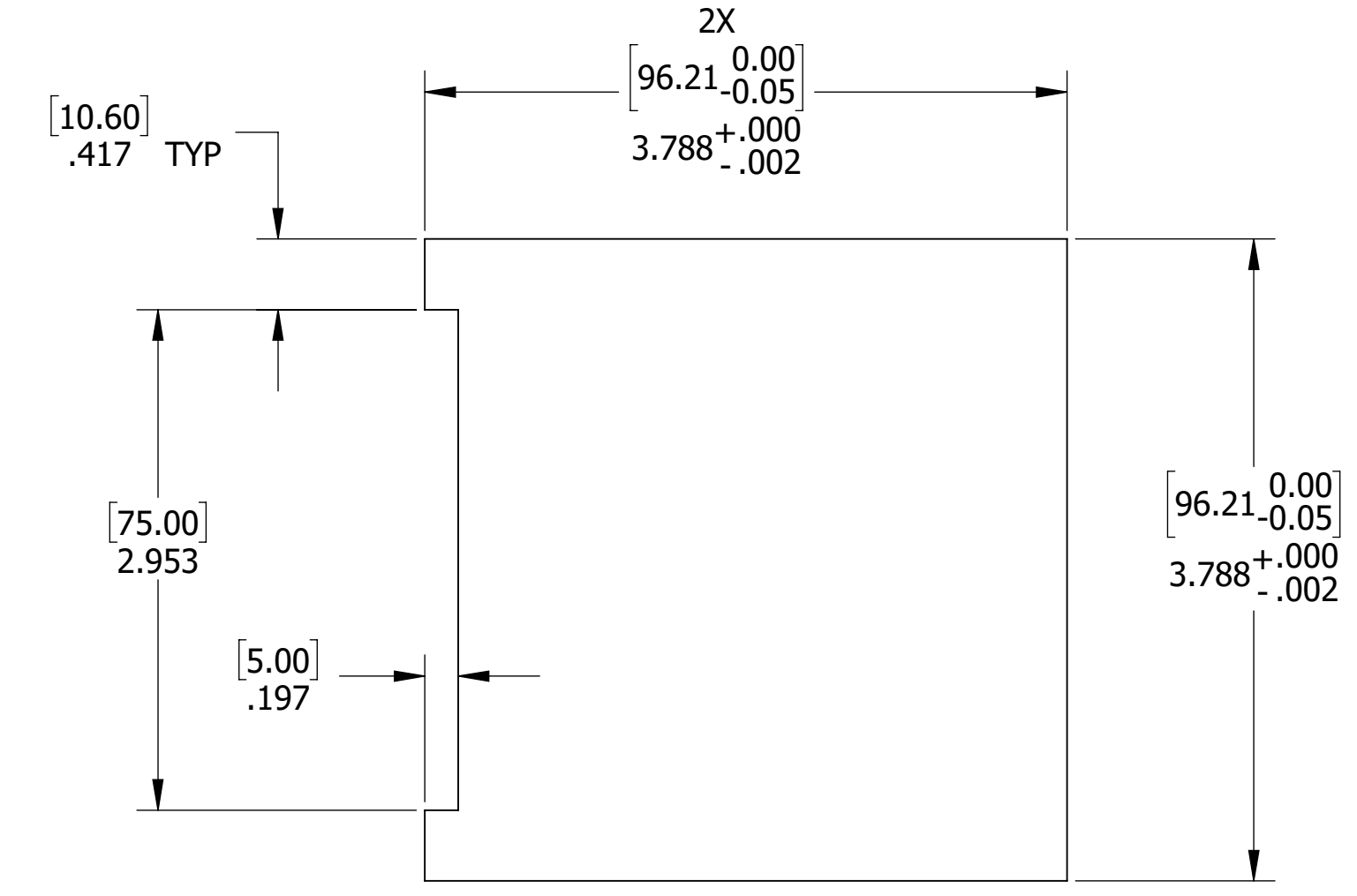
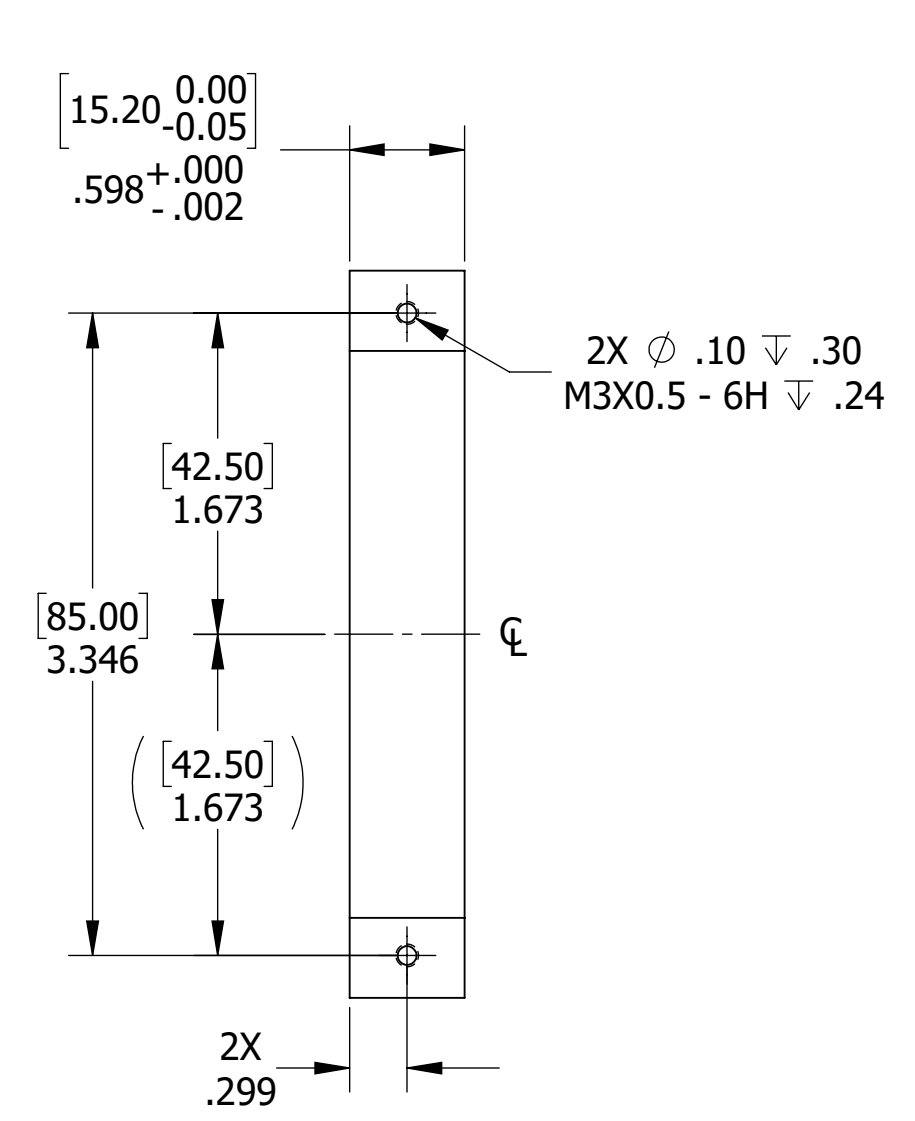
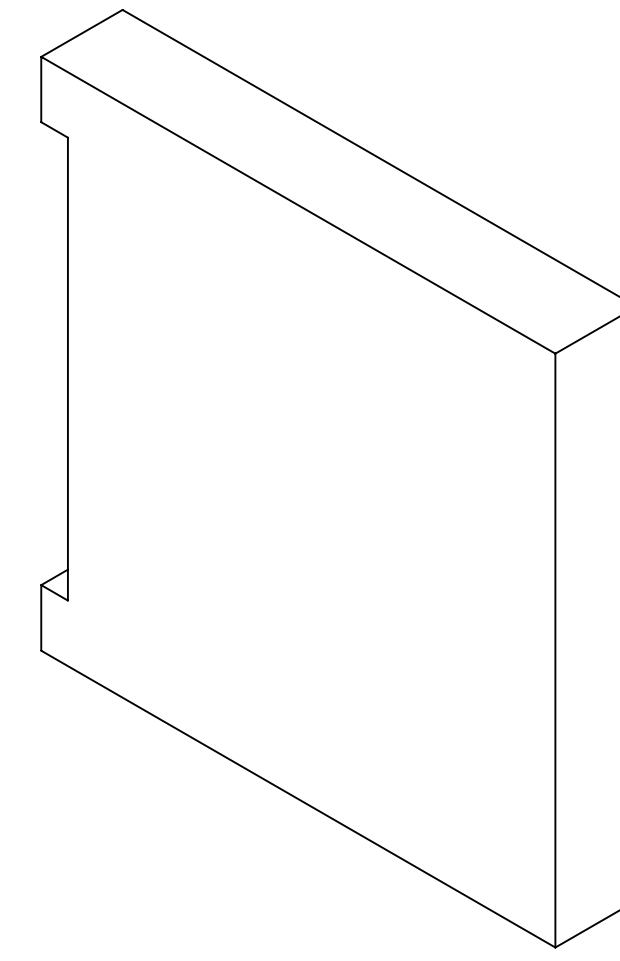
QUALITY VERIFICATION REQUIREMENTS DOCUMENTS		THIRD-ANGLE PROJECTION	APPROVALS		DATE		THIS DRAWING IS THE PROPERTY OF OAK RIDGE NATIONAL LABORATORY OPERATED FOR THE U.S. DEPARTMENT OF ENERGY UNDER CONTRACT DE-AC05-00OR22725 OAK RIDGE, TN					
MATERIAL MILL TEST REPORT	x		UNLESS OTHERWISE NOTED DIMENSIONS ARE IN INCHES INTERPRET DIMENSIONS AND TOLERANCES PER ASME Y14.5M BREAK SHARP CORNERS AND REMOVE ALL BURRS DEFAULT TOLERANCES LINEAR .XX = ±.100 ANGULAR .XX = ±.1/2 X.XX = ±.010 X.XXX = ±.005 DO NOT SCALE DRAWING	DES	EJ FOUNTAIN		03/08/2023	EPIC TOWER ASSEMBLY STEEL ABSORBER PLATE	SIZE	NEXT ASSY	DWG NO.	REV
LEAK TEST REPORT		DRW		EJ FOUNTAIN	03/08/2023	D	EPIC-200		EPIC-306	0		
CLEANING CERT		CHK		JP SLADE	03/24/2023	SCALE	1:1		NAME	STEEL ABSORBER PLATE	SHEET	1 of 1
WELD / BRAZE INSPECTION REPORT		ENG		EJ FOUNTAIN	03/08/2023	THIS DRAWING PRODUCED USING SolidWorks						
HEAT TREAT REPORT		QA										
DIMENSIONAL REPORT		TOTAL WEIGHT		2.3510 LBS								
MATERIAL SELLER CERT												
FUNCTIONAL TEST REPORT												
DEVIATION REQUEST	x											
NONCONFORMANCE REPORT	x											

DWG NO. EPIC-306
CAD FILE: 4M Absorber Plate

NO REPRESENTATION OR WARRANTY, EXPRESSED OR IMPLIED, IS MADE AS TO THE ACCURACY, COMPLETENESS OR USEFULNESS OF THE INFORMATION OR STATEMENTS CONTAINED IN THESE DRAWINGS, OR THAT THE DISCLOSURE OF ANY INFORMATION, APPARATUS, METHOD OR PROCESS DISCLOSED MAY NOT INFRINGE PRIVATE RIGHTS OF OTHERS. NO LIABILITY IS ASSUMED WITH RESPECT TO THE USE OF, OR FOR DAMAGES RESULTING FROM THE USE OF, ANY INFORMATION, APPARATUS, METHOD OR PROCESS DISCLOSED IN THESE DRAWINGS. DRAWINGS MADE AVAILABLE FOR INFORMATION TO BIDDER ARE NOT TO BE USED FOR OTHER PURPOSES AND ARE TO BE RETURNED UPON REQUEST OF THE FORWARDING CONTRACTOR.

NOTES

- 1. QUANTITY: 3.



MATERIAL: CARBON STEEL

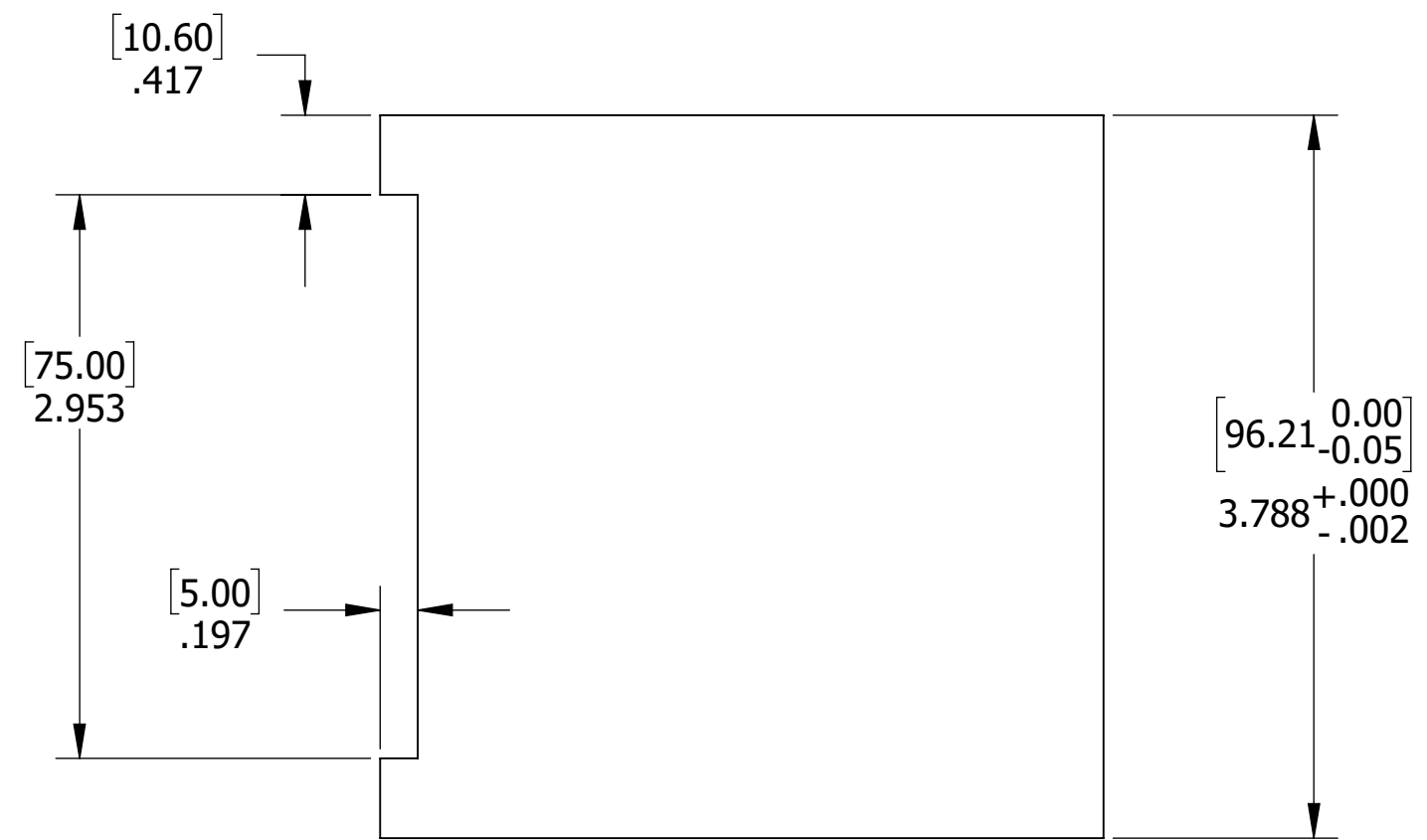
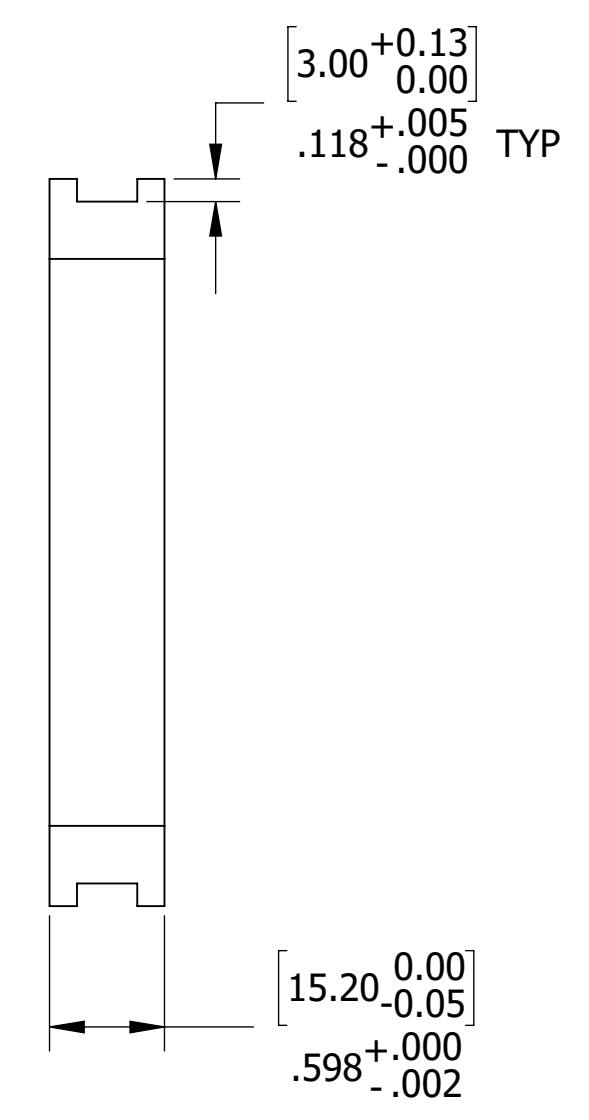
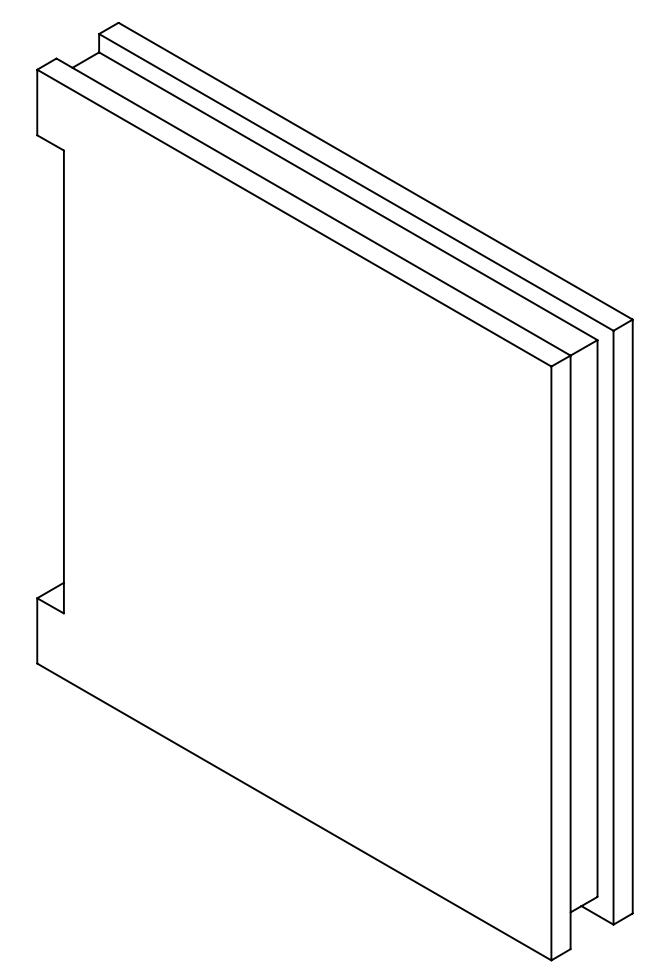
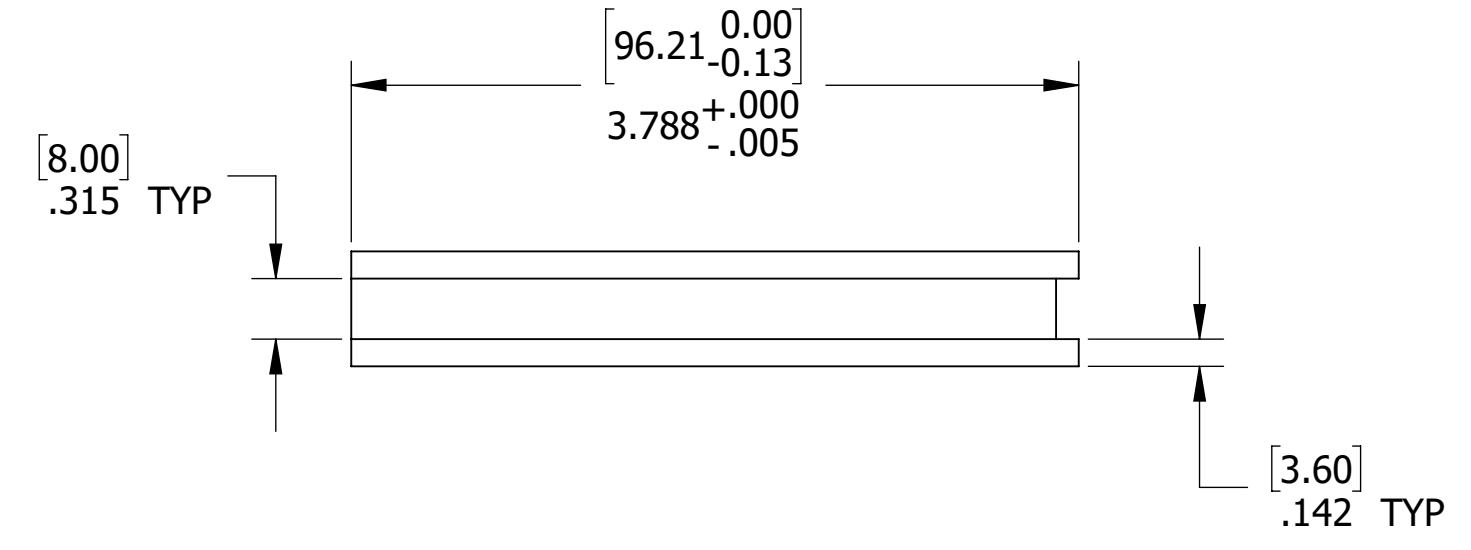
QUALITY VERIFICATION REQUIREMENTS DOCUMENTS		THIRD-ANGLE PROJECTION	APPROVALS		DATE		THIS DRAWING IS THE PROPERTY OF OAK RIDGE NATIONAL LABORATORY OPERATED FOR THE U.S. DEPARTMENT OF ENERGY UNDER CONTRACT DE-AC05-00OR22725 OAK RIDGE, TN				
DOCUMENT	STATUS		DESIGNER	DATE	DATE		SIZE	NEXT ASSY	DWG NO.	REV	
MATERIAL MILL TEST REPORT	x	UNLESS OTHERWISE NOTED DIMENSIONS ARE IN INCHES INTERPRET DIMENSIONS AND TOLERANCES PER ASME Y14.5M BREAK SHARP CORNERS AND REMOVE ALL BURRS DEFAULT TOLERANCES LINEAR .XX = ±.100 ANGULAR .XX = ±.1/2 X.XX = ±.010 X.XXX = ±.005 DO NOT SCALE DRAWING	DES	EJ FOUNTAIN	03/08/2023	D	EPIC-200	EPIC-307	0		
LEAK TEST REPORT			DRW	EJ FOUNTAIN	03/08/2023						
CLEANING CERT			CHK	JP SLADE	03/24/2023						
WELD / BRAZE INSPECTION REPORT			ENG	EJ FOUNTAIN	03/08/2023						
HEAT TREAT REPORT			QA								
DIMENSIONAL REPORT			TOTAL WEIGHT		2.3496 LBS	SCALE	1:1	NAME	STEEL ABSORBER PLATE, TAPPED	SHEET	1 of 1
MATERIAL SELLER CERT			THIS DRAWING PRODUCED USING		SolidWorks						
FUNCTIONAL TEST REPORT											
DEVIATION REQUEST	x										
NONCONFORMANCE REPORT	x										

DWG NO. EPIC-307
CAD FILE: 4M Absorber_Plate_Tapped

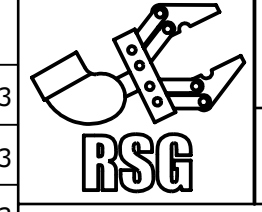
NO REPRESENTATION OR WARRANTY, EXPRESSED OR IMPLIED, IS MADE AS TO THE ACCURACY, COMPLETENESS OR USEFULNESS OF THE INFORMATION OR STATEMENTS CONTAINED IN THESE DRAWINGS, OR THAT THE DISCLOSURE OF ANY INFORMATION, APPARATUS, METHOD OR PROCESS DISCLOSED MAY NOT INFRINGE PRIVATE RIGHTS OF OTHERS. NO LIABILITY IS ASSUMED WITH RESPECT TO THE USE OF, OR FOR DAMAGES RESULTING FROM THE USE OF, ANY INFORMATION, APPARATUS, METHOD OR PROCESS DISCLOSED IN THESE DRAWINGS. DRAWINGS MADE AVAILABLE FOR INFORMATION TO BIDDER ARE NOT TO BE USED FOR OTHER PURPOSES AND ARE TO BE RETURNED UPON REQUEST OF THE FORWARDING CONTRACTOR.

NOTES

- 1. QUANTITY: 4.



MATERIAL: TUNGSTEN (W 6Ni-4Cu)

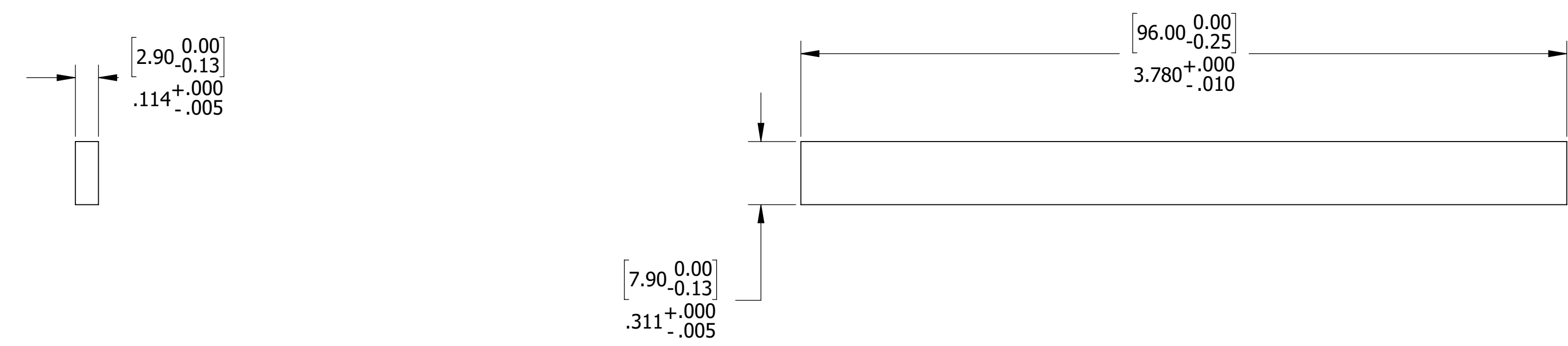
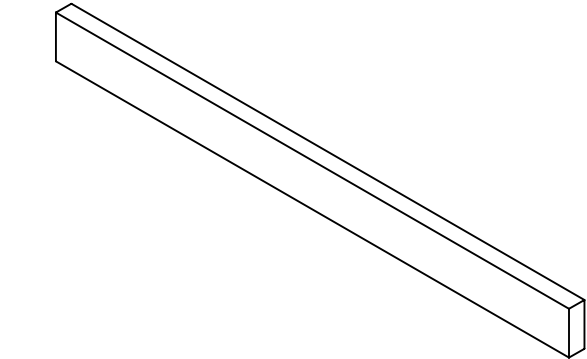
QUALITY VERIFICATION REQUIREMENTS DOCUMENTS		THIRD-ANGLE PROJECTION	APPROVALS		DATE		THIS DRAWING IS THE PROPERTY OF OAK RIDGE NATIONAL LABORATORY OPERATED FOR THE U.S. DEPARTMENT OF ENERGY UNDER CONTRACT DE-AC05-00OR22725 OAK RIDGE, TN					
DESCRIPTION	STATUS		DESIGNER	DATE	DATE		GROUP	PROJECT	REVISION			
MATERIAL MILL TEST REPORT	X	UNLESS OTHERWISE NOTED DIMENSIONS ARE IN INCHES INTERPRET DIMENSIONS AND TOLERANCES PER ASME Y14.5M BREAK SHARP CORNERS AND REMOVE ALL BURRS DEFAULT TOLERANCES LINEAR .XX = ±.100 ANGULAR .XX = ±.100 .XXX = ±.010 .1/2 X.XXX = ±.005	DES	EJ FOUNTAIN	03/07/2023	EPIC TOWER ASSEMBLY TUNGSTEN ABSORBER PLATE	SIZE	NEXT ASSY	DWG NO.	REV		
LEAK TEST REPORT			DRW	EJ FOUNTAIN	03/07/2023		D	EPIC-200	EPIC-308	0		
CLEANING CERT			CHK	JP SLADE	03/24/2023		SCALE	1:1	NAME	TUNGSTEN ABSORBER PLATE	SHEET	1 of 1
WELD / BRAZE INSPECTION REPORT			ENG	EJ FOUNTAIN	03/07/2023		THIS DRAWING PRODUCED USING SolidWorks					
HEAT TREAT REPORT			QA				TOTAL WEIGHT 5.3701 LBS					
DIMENSIONAL REPORT			DO NOT SCALE DRAWING									
MATERIAL SELLER CERT												
FUNCTIONAL TEST REPORT												
DEVIATION REQUEST	X											
NONCONFORMANCE REPORT	X											

DWG NO. EPIC-308
CAD FILE: 4M Tungsten Absorber Plate

NO REPRESENTATION OR WARRANTY, EXPRESSED OR IMPLIED, IS MADE AS TO THE ACCURACY, COMPLETENESS OR USEFULNESS OF THE INFORMATION OR STATEMENTS CONTAINED IN THESE DRAWINGS, OR THAT THE DISCLOSURE OF ANY INFORMATION, APPARATUS, METHOD OR PROCESS DISCLOSED MAY NOT INFRINGE PRIVATE RIGHTS OF OTHERS. NO LIABILITY IS ASSUMED WITH RESPECT TO THE USE OF, OR FOR DAMAGES RESULTING FROM THE USE OF, ANY INFORMATION, APPARATUS, METHOD OR PROCESS DISCLOSED IN THESE DRAWINGS. DRAWINGS MADE AVAILABLE FOR INFORMATION TO BIDDER ARE NOT TO BE USED FOR OTHER PURPOSES AND ARE TO BE RETURNED UPON REQUEST OF THE FORWARDING CONTRACTOR.

NOTES

- 1. QUANTITY: 8.



MATERIAL: CARBON STEEL

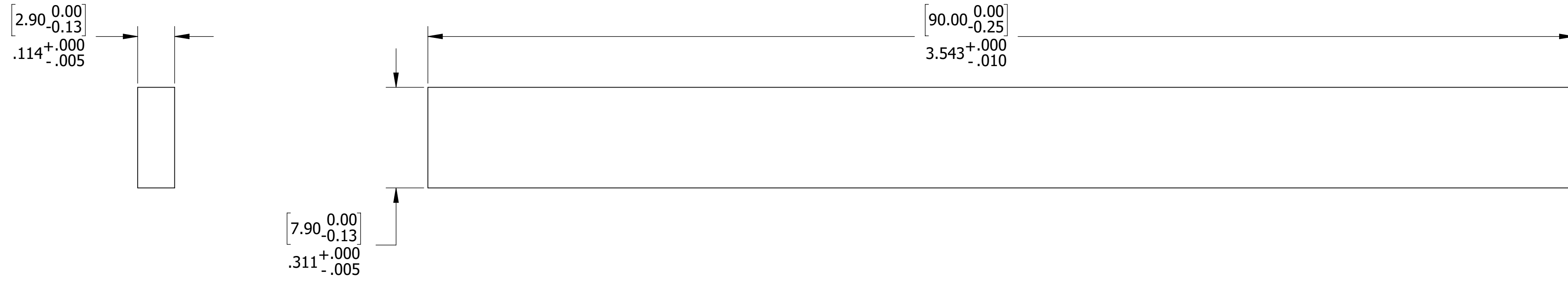
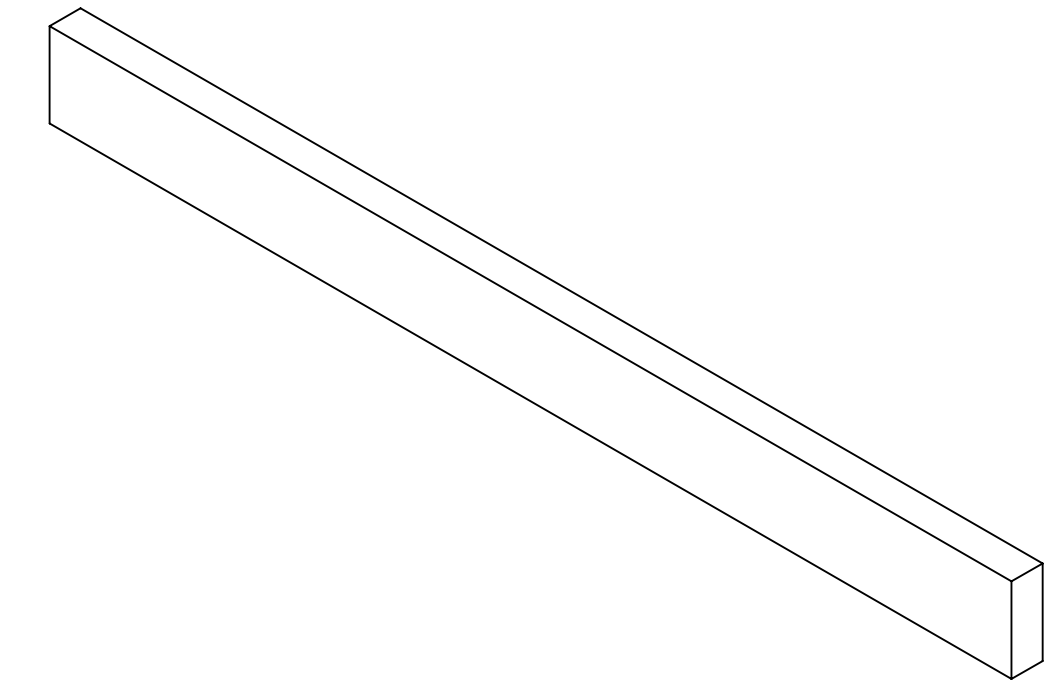
QUALITY VERIFICATION REQUIREMENTS DOCUMENTS		THIRD-ANGLE PROJECTION	APPROVALS		DATE		THIS DRAWING IS THE PROPERTY OF OAK RIDGE NATIONAL LABORATORY OPERATED FOR THE U.S. DEPARTMENT OF ENERGY UNDER CONTRACT DE-AC05-00OR22725 OAK RIDGE, TN				
DESCRIPTION	STATUS		DESIGNER	DATE	DATE		SIZE	NEXT ASSY	DWG NO.	REV	
MATERIAL MILL TEST REPORT	x	UNLESS OTHERWISE NOTED DIMENSIONS ARE IN INCHES INTERPRET DIMENSIONS AND TOLERANCES PER ASME Y14.5M BREAK SHARP CORNERS AND REMOVE ALL BURRS DEFAULT TOLERANCES LINEAR .XX = ±.100 ANGULAR .X/XX = ±.1/2 X.XX = ±.010 X.XXX = ±.005 DO NOT SCALE DRAWING	DES	EJ FOUNTAIN	03/24/2023		EPIC TOWER ASSEMBLY LONG SHIM				
LEAK TEST REPORT			DRW	EJ FOUNTAIN	03/24/2023		0.0378 LBS	D	EPIC-200	EPIC-309	0
CLEANING CERT			CHK	JP SLADE	03/24/2023						
WELD / BRAZE INSPECTION REPORT			ENG	EJ FOUNTAIN	03/24/2023						
HEAT TREAT REPORT			QA								
DIMENSIONAL REPORT											
MATERIAL SELLER CERT											
FUNCTIONAL TEST REPORT											
DEVIATION REQUEST	x										
NONCONFORMANCE REPORT	x										

DWG NO. EPIC-309
CAD FILE: 4M Absorber Plate Shim

NO REPRESENTATION OR WARRANTY, EXPRESSED OR IMPLIED, IS MADE AS TO THE ACCURACY, COMPLETENESS OR USEFULNESS OF THE INFORMATION OR STATEMENTS CONTAINED IN THESE DRAWINGS, OR THAT THE DISCLOSURE OF ANY INFORMATION, APPARATUS, METHOD OR PROCESS DISCLOSED MAY NOT INFRINGE PRIVATE RIGHTS OF OTHERS. NO LIABILITY IS ASSUMED WITH RESPECT TO THE USE OF, OR FOR DAMAGES RESULTING FROM THE USE OF, ANY INFORMATION, APPARATUS, METHOD OR PROCESS DISCLOSED IN THESE DRAWINGS. DRAWINGS MADE AVAILABLE FOR INFORMATION TO BIDDER ARE NOT TO BE USED FOR OTHER PURPOSES AND ARE TO BE RETURNED UPON REQUEST OF THE FORWARDING CONTRACTOR.

NOTES

- 1. QUANTITY: 4.



MATERIAL: CARBON STEEL

QUALITY VERIFICATION REQUIREMENTS DOCUMENTS		THIRD-ANGLE PROJECTION	APPROVALS		DATE		THIS DRAWING IS THE PROPERTY OF OAK RIDGE NATIONAL LABORATORY OPERATED FOR THE U.S. DEPARTMENT OF ENERGY UNDER CONTRACT DE-AC05-00OR22725 OAK RIDGE, TN				
DESCRIPTION	STATUS		DESIGNER	DATE	DATE		SIZE	NEXT ASSY	DWG NO.	REV	
MATERIAL MILL TEST REPORT	X	UNLESS OTHERWISE NOTED DIMENSIONS ARE IN INCHES INTERPRET DIMENSIONS AND TOLERANCES PER ASME Y14.5M BREAK SHARP CORNERS AND REMOVE ALL BURRS DEFAULT TOLERANCES LINEAR .XX = ±.100 ANGULAR .X/XX = ±.10° .XXX = ±.010 X.XXX = ±.005 DO NOT SCALE DRAWING	DES	EJ FOUNTAIN	03/24/2023		EPIC TOWER ASSEMBLY SHORT SHIM THIS DRAWING PRODUCED USING SolidWorks SCALE 4:1 NAME SHORT SHIM SHEET 1 of 1				
LEAK TEST REPORT			DRW	EJ FOUNTAIN	03/24/2023						
CLEANING CERT			CHK	JP SLADE	03/24/2023						
WELD / BRAZE INSPECTION REPORT			ENG	EJ FOUNTAIN	03/24/2023						
HEAT TREAT REPORT			QA			TOTAL WEIGHT	0.0355 LBS	D	EPIC-300	EPIC-310	0
DIMENSIONAL REPORT			THIS DRAWING PRODUCED USING SolidWorks			SCALE	4:1	NAME	SHORT SHIM	SHEET	1 of 1
MATERIAL SELLER CERT											
FUNCTIONAL TEST REPORT											
DEVIATION REQUEST	X										
NONCONFORMANCE REPORT	X										

DWG NO. EPIC-310
CAD FILE: 4M Absorber Plate Shim_Short