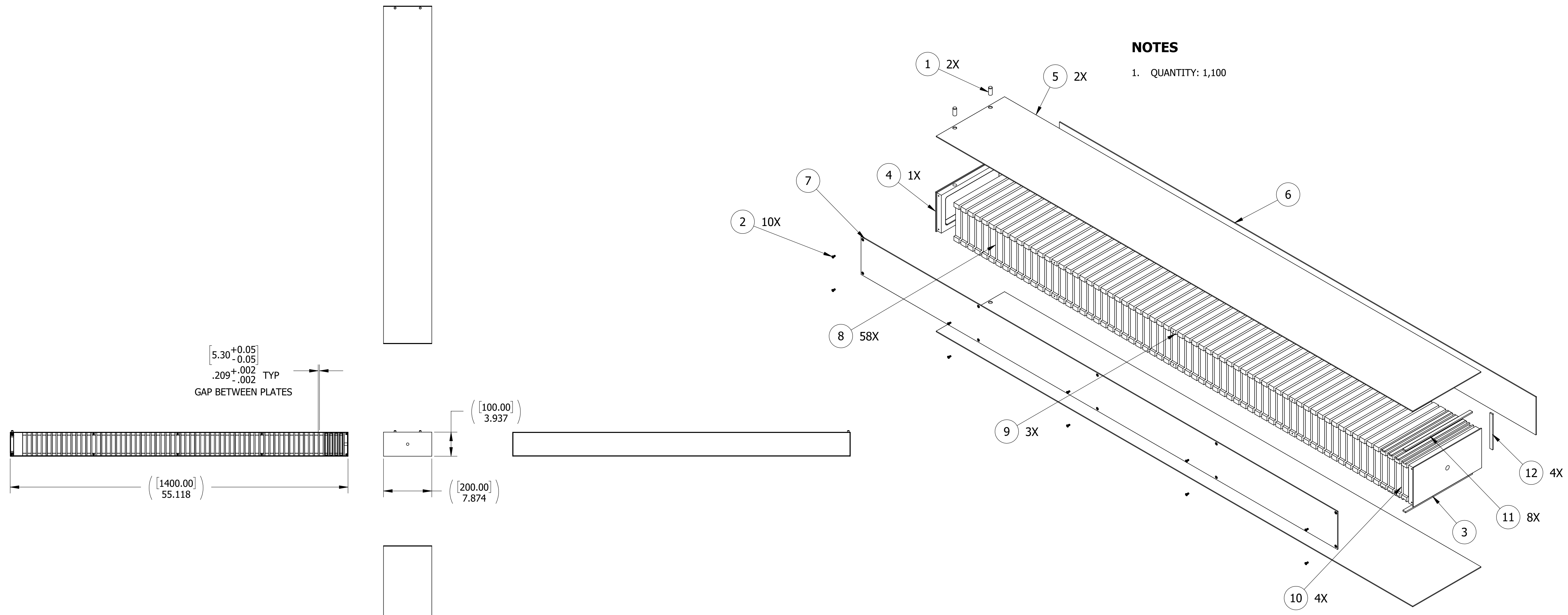


NO REPRESENTATION OR WARRANTY, EXPRESSED OR IMPLIED, IS MADE AS TO THE ACCURACY, COMPLETENESS OR USEFULNESS OF THE INFORMATION OR STATEMENTS CONTAINED IN THESE DRAWINGS, OR THAT THE DISCLOSURE OF ANY INFORMATION, APPARATUS, METHOD OR PROCESS DISCLOSED MAY NOT INFRINGE PRIVATE RIGHTS OF OTHERS. NO LIABILITY IS ASSUMED WITH RESPECT TO THE USE OF, OR FOR DAMAGES RESULTING FROM THE USE OF, ANY INFORMATION, APPARATUS, METHOD OR PROCESS DISCLOSED IN THESE DRAWINGS. DRAWINGS MADE AVAILABLE FOR INFORMATION TO BIDDER ARE NOT TO BE USED FOR OTHER PURPOSES AND ARE TO BE RETURNED UPON REQUEST OF THE FORWARDING CONTRACTOR.

NOTES

1. QUANTITY: 1,100

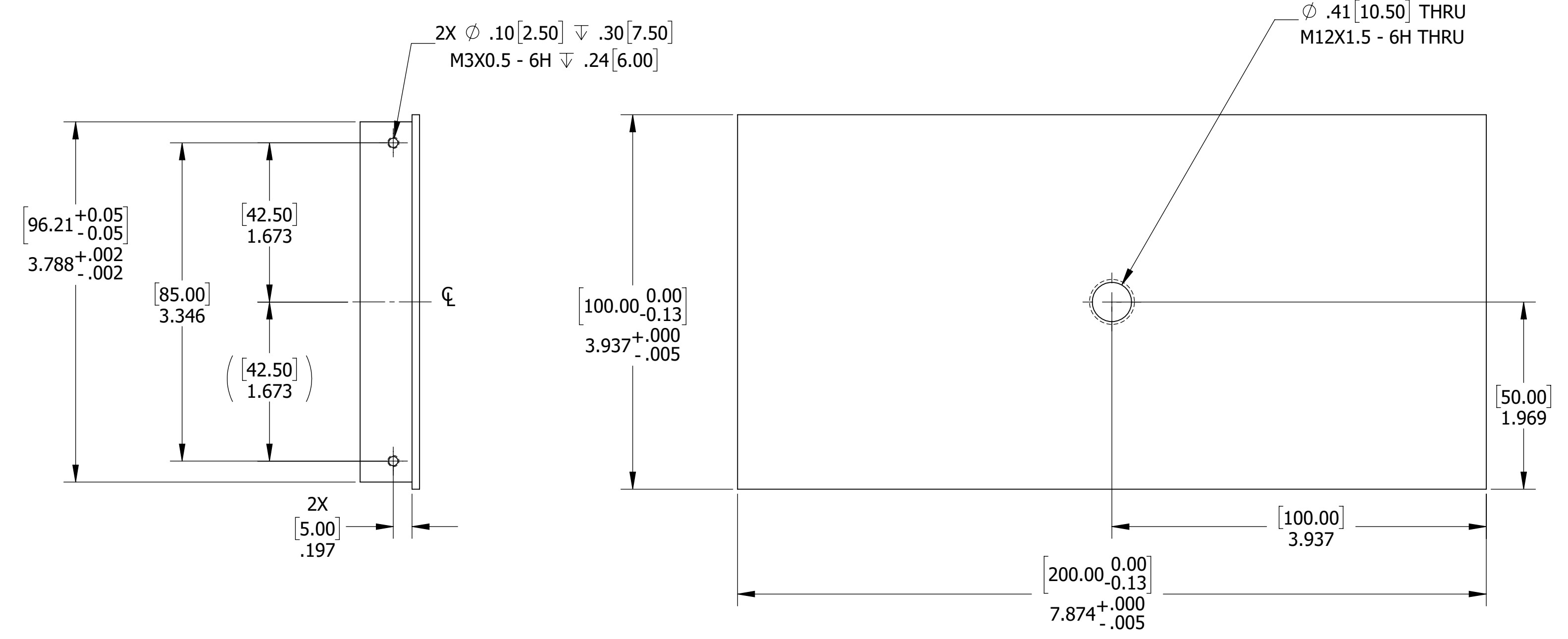
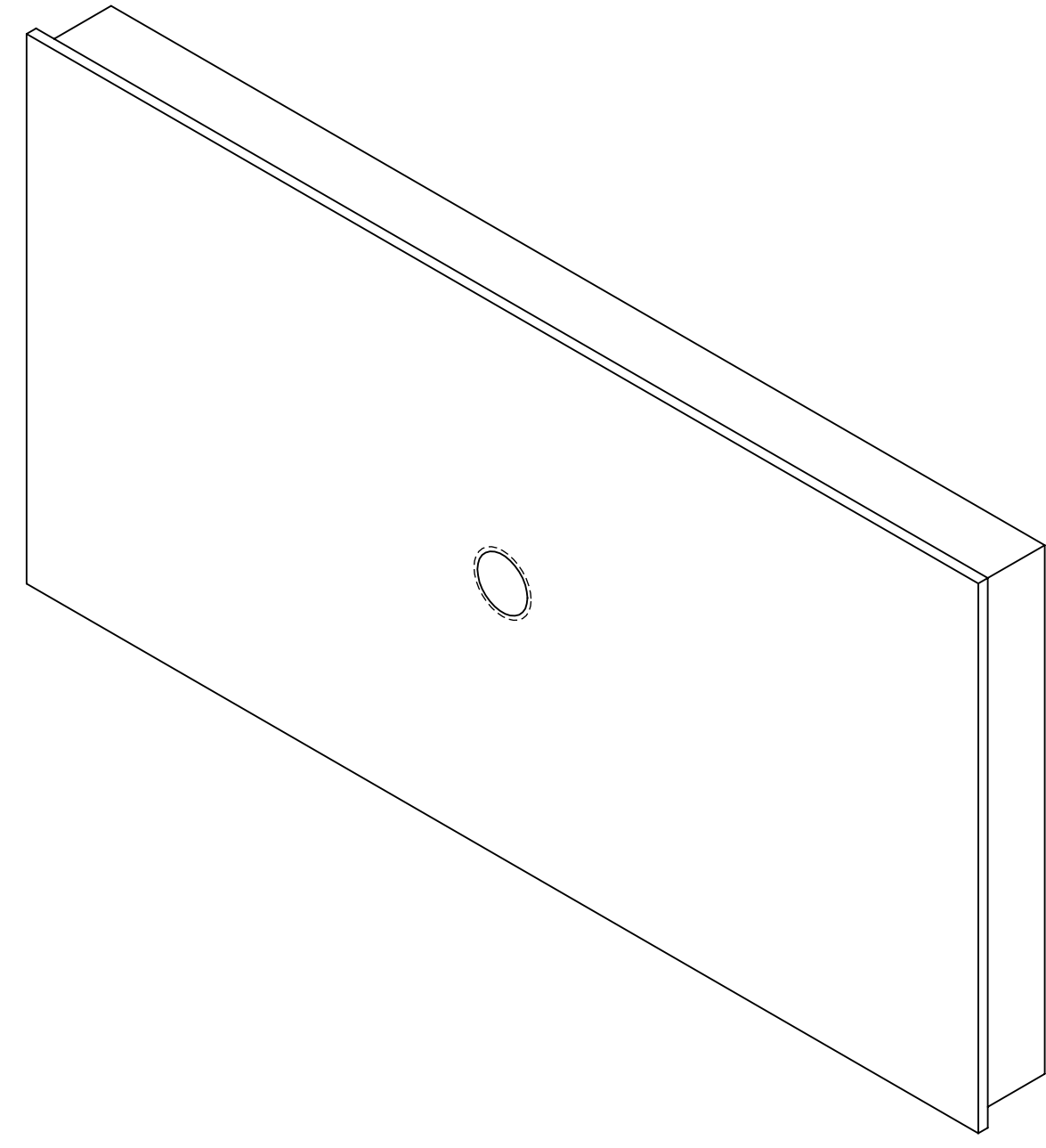
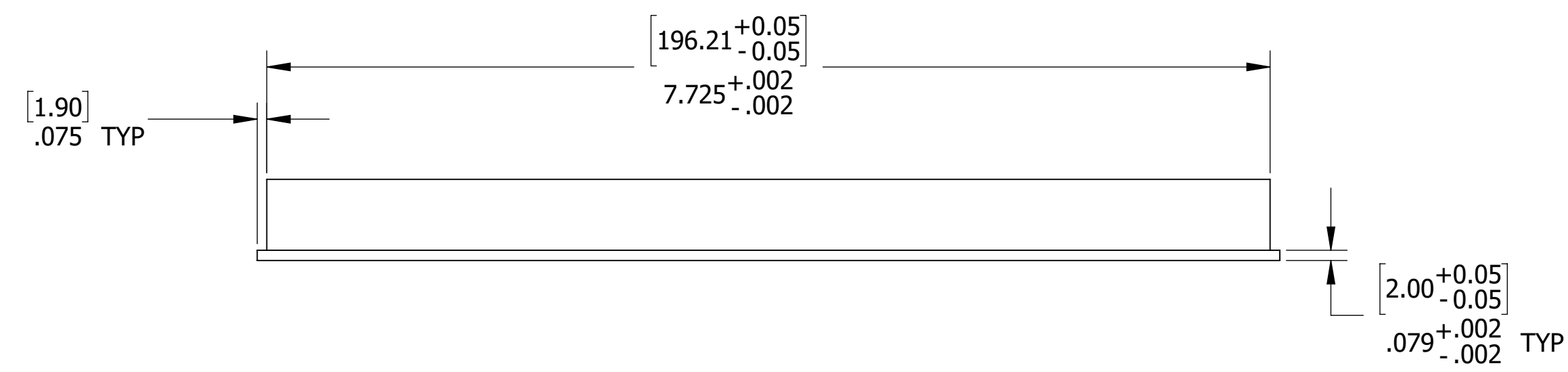


ITEM	QTY.	NAME/PART NO	MATERIAL	DESCRIPTION	DWG
12	4	SHORT SHIM	CARBON STEEL	SHEET METAL	EPIC-210
11	8	LONG SHIM	CARBON STEEL	SHEET METAL	EPIC-209
10	4	TUNGSTEN ABSORBER PLATE	TUNGSTEN (W 6Ni-4Cu)	PLATE	EPIC-208
9	3	STEEL ABSORBER PLATE, TAPPED	CARBON STEEL	PLATE	EPIC-207
8	58	STEEL ABSORBER PLATE	CARBON STEEL	PLATE	EPIC-206
7	1	PCB COVER	CARBON STEEL	SHEET METAL 14 GA	EPIC-205
6	1	SIDE COVER	CARBON STEEL	SHEET METAL 14 GA	EPIC-204
5	2	TOP / BOTIOM PLATE	CARBON STEEL	SHEET METAL 14 GA	EPIC-203
4	1	BACK PLATE	CARBON STEEL	PLATE	EPIC-202
3	1	FRONT PLATE	CARBON STEEL	PLATE	EPIC-201
2	10	MCMaster_90358A001	ALLOY STEEL	M3-0.5 X 6MM LG LOW SHCS	N/A
1	2	MCMaster_91595A558	STEEL	8MM X 20MM DOWEL PIN	N/A

QUALITY VERIFICATION REQUIREMENTS DOCUMENTS MATERIAL MILL TEST REPORT LEAK TEST REPORT CLEANING CERT WELD / BRAZE INSPECTION REPORT HEAT TREAT REPORT DIMENSIONAL REPORT x MATERIAL SELLER CERT x FUNCTIONAL TEST REPORT DEVIATION REQUEST x NONCONFORMANCE REPORT x		THIRD-ANGLE PROJECTION UNLESS OTHERWISE NOTED DIMENSIONS ARE IN INCHES INTERPRET DIMENSIONS AND TOLERANCES PER ASME Y14.5M BREAK SHARP CORNERS AND REMOVE ALL BURRS DEFAULT TOLERANCES LINEAR .XX = ±.100 ANGLUAR .X/XX = ±.010 .XXX = ±.005 DO NOT SCALE DRAWING	<table border="1"> <thead> <tr> <th>APPROVALS</th> <th>DATE</th> </tr> </thead> <tbody> <tr> <td>DES EJ FOUNTAIN</td> <td>03/09/2023</td> </tr> <tr> <td>DRW EJ FOUNTAIN</td> <td>03/09/2023</td> </tr> <tr> <td>CHK JP SLADE</td> <td>03/09/2023</td> </tr> <tr> <td>ENG EJ FOUNTAIN</td> <td>03/09/2023</td> </tr> <tr> <td>QA</td> <td></td> </tr> </tbody> </table>	APPROVALS	DATE	DES EJ FOUNTAIN	03/09/2023	DRW EJ FOUNTAIN	03/09/2023	CHK JP SLADE	03/09/2023	ENG EJ FOUNTAIN	03/09/2023	QA		THIS DRAWING IS THE PROPERTY OF OAK RIDGE NATIONAL LABORATORY OPERATED FOR THE U.S. DEPARTMENT OF ENERGY UNDER CONTRACT DE-AC05-00OR22725 OAK RIDGE, TN REMOTE SYSTEMS GROUP EPIC TOWER ASSEMBLY TOWER BODY ASSEMBLY
APPROVALS	DATE															
DES EJ FOUNTAIN	03/09/2023															
DRW EJ FOUNTAIN	03/09/2023															
CHK JP SLADE	03/09/2023															
ENG EJ FOUNTAIN	03/09/2023															
QA																
TOTAL WEIGHT LBS THIS DRAWING PRODUCED USING SolidWorks		SIZE D NEXT ASSY N/A SCALE 1:8 NAME TOWER WELDMENT SHEET 1 of 1	DWG NO. EPIC-200 REV 0													

DWG NO. EPIC-200
CAD FILE: 8M Module Body_Assembly_B

NO REPRESENTATION OR WARRANTY, EXPRESSED OR IMPLIED, IS MADE AS TO THE ACCURACY, COMPLETENESS OR USEFULNESS OF THE INFORMATION OR STATEMENTS CONTAINED IN THESE DRAWINGS, OR THAT THE DISCLOSURE OF ANY INFORMATION, APPARATUS, METHOD OR PROCESS DISCLOSED MAY NOT INFRINGE PRIVATE RIGHTS OF OTHERS. NO LIABILITY IS ASSUMED WITH RESPECT TO THE USE OF, OR FOR DAMAGES RESULTING FROM THE USE OF, ANY INFORMATION, APPARATUS, METHOD OR PROCESS DISCLOSED IN THESE DRAWINGS. DRAWINGS MADE AVAILABLE FOR INFORMATION TO BIDDER ARE NOT TO BE USED FOR OTHER PURPOSES AND ARE TO BE RETURNED UPON REQUEST OF THE FORWARDING CONTRACTOR.

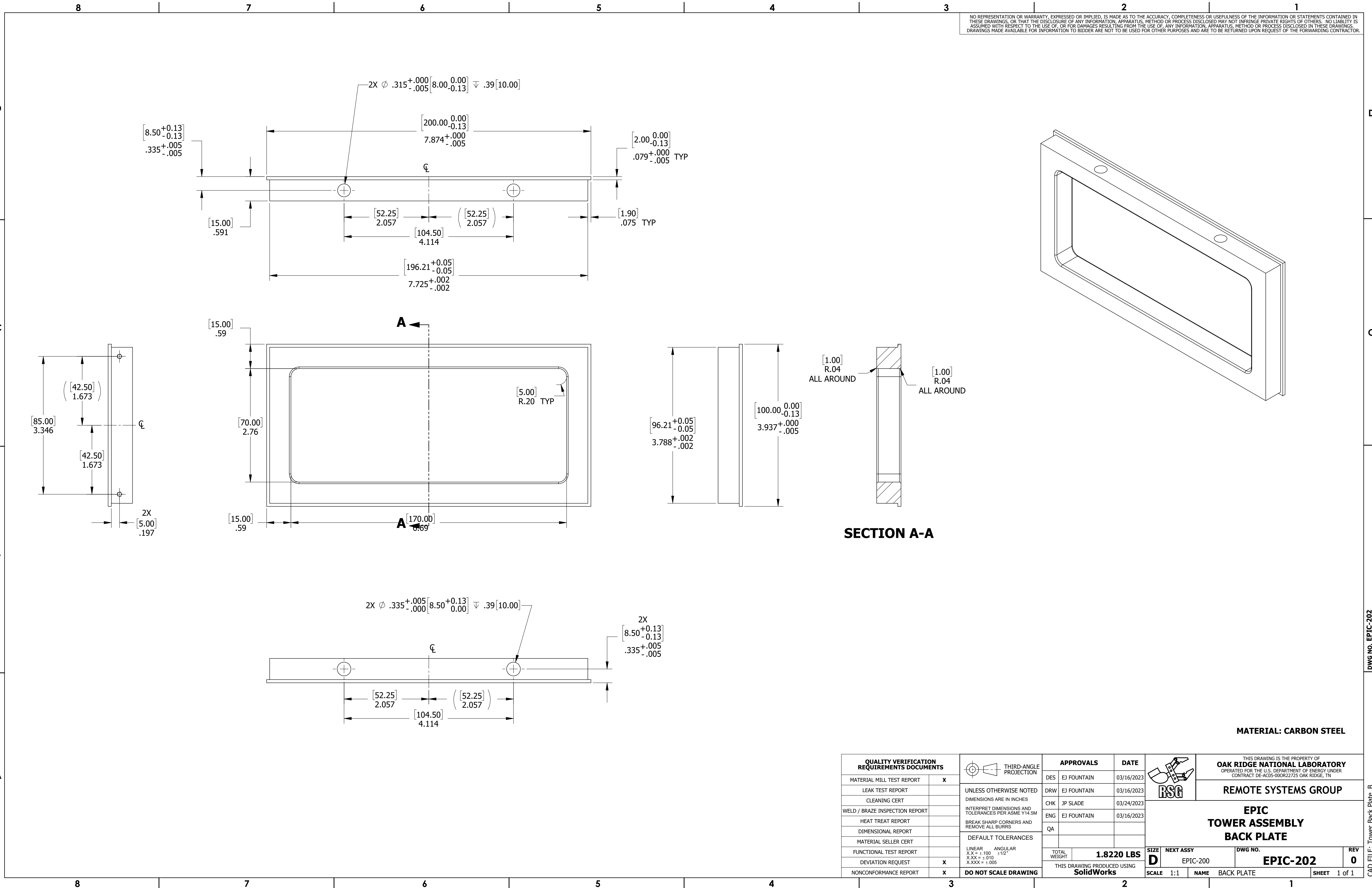


MATERIAL: CARBON STEEL

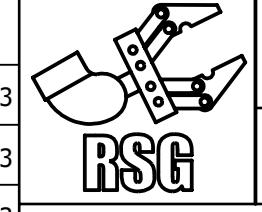
QUALITY VERIFICATION REQUIREMENTS DOCUMENTS		THIRD-ANGLE PROJECTION	APPROVALS		DATE		THIS DRAWING IS THE PROPERTY OF OAK RIDGE NATIONAL LABORATORY OPERATED FOR THE U.S. DEPARTMENT OF ENERGY UNDER CONTRACT DE-AC05-00OR22725 OAK RIDGE, TN			
MATERIAL MILL TEST REPORT	x		DES	EJ FOUNTAIN	03/09/2023		REMOTE SYSTEMS GROUP EPIC TOWER ASSEMBLY FRONT PLATE			
LEAK TEST REPORT		DRW	EJ FOUNTAIN	03/09/2023						
CLEANING CERT		CHK	JP SLADE	03/09/2023	EPIC TOWER ASSEMBLY FRONT PLATE					
WELD / BRAZE INSPECTION REPORT		ENG	EJ FOUNTAIN	03/09/2023						
HEAT TREAT REPORT		QA			5.2329 LBS		SIZE D	NEXT ASSY EPIC-200	DWG NO. EPIC-201	REV 0
DIMENSIONAL REPORT		UNLESS OTHERWISE NOTED DIMENSIONS ARE IN INCHES INTERPRET DIMENSIONS AND TOLERANCES PER ASME Y14.5M BREAK SHARP CORNERS AND REMOVE ALL BURRS			THIS DRAWING PRODUCED USING SolidWorks		SCALE 1:1	NAME FRONT PLATE	SHEET 1 of 1	
MATERIAL SELLER CERT		DEFAULT TOLERANCES LINEAR .XX = ±.100 ANGULAR .XXX = ±.010 .XXX = ±.010 .XXX = ±.005								
FUNCTIONAL TEST REPORT		DO NOT SCALE DRAWING								
DEVIATION REQUEST	x									
NONCONFORMANCE REPORT	x									

DWG NO. EPIC-201
CAD FILE: Tower Front Plate_B

NO REPRESENTATION OR WARRANTY, EXPRESSED OR IMPLIED, IS MADE AS TO THE ACCURACY, COMPLETENESS OR USEFULNESS OF THE INFORMATION OR STATEMENTS CONTAINED IN THESE DRAWINGS, OR THAT THE DISCLOSURE OF ANY INFORMATION, APPARATUS, METHOD OR PROCESS DISCLOSED MAY NOT INFRINGE PRIVATE RIGHTS OF OTHERS. NO LIABILITY IS ASSUMED WITH RESPECT TO THE USE OF, OR FOR DAMAGES RESULTING FROM THE USE OF, ANY INFORMATION, APPARATUS, METHOD OR PROCESS DISCLOSED IN THESE DRAWINGS. DRAWINGS MADE AVAILABLE FOR INFORMATION TO BIDDER ARE NOT TO BE USED FOR OTHER PURPOSES AND ARE TO BE RETURNED UPON REQUEST OF THE FORWARDING CONTRACTOR.



MATERIAL: CARBON STEEL

QUALITY VERIFICATION REQUIREMENTS DOCUMENTS		THIRD-ANGLE PROJECTION	APPROVALS		DATE		THIS DRAWING IS THE PROPERTY OF OAK RIDGE NATIONAL LABORATORY OPERATED FOR THE U.S. DEPARTMENT OF ENERGY UNDER CONTRACT DE-AC05-00OR22725 OAK RIDGE, TN					
DESCRIPTION	STATUS		DESIGNER	DATE	DATE		SIZE	NAME	DWG NO.	REV		
MATERIAL MILL TEST REPORT	x	UNLESS OTHERWISE NOTED DIMENSIONS ARE IN INCHES INTERPRET DIMENSIONS AND TOLERANCES PER ASME Y14.5M BREAK SHARP CORNERS AND REMOVE ALL BURRS DEFAULT TOLERANCES LINEAR .XX = ±.100 ANGULAR .XX = ±.1/2 XXX = ±.010 XXXX = ±.005 DO NOT SCALE DRAWING	DES	EJ FOUNTAIN	03/16/2023	D	NEXT ASSY EPIC-200	EPIC-202	0			
LEAK TEST REPORT			DRW	EJ FOUNTAIN	03/16/2023							
CLEANING CERT			CHK	JP SLADE	03/24/2023							
WELD / BRAZE INSPECTION REPORT			ENG	EJ FOUNTAIN	03/16/2023							
HEAT TREAT REPORT			QA									
DIMENSIONAL REPORT			TOTAL WEIGHT		1.8220 LBS		SCALE	1:1	NAME	BACK PLATE	SHEET	1 of 1
MATERIAL SELLER CERT			THIS DRAWING PRODUCED USING		SolidWorks							
FUNCTIONAL TEST REPORT												
DEVIATION REQUEST	x											
NONCONFORMANCE REPORT	x											

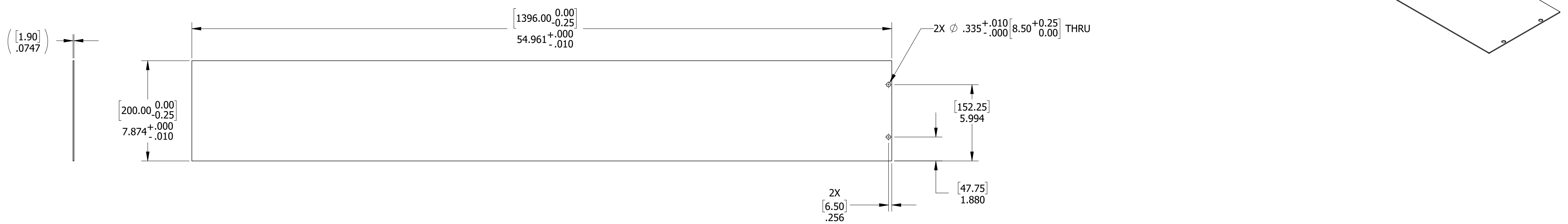
EPIC TOWER ASSEMBLY BACK PLATE

DWG NO. EPIC-202 CAD FILE: Tower Back Plate_B

NO REPRESENTATION OR WARRANTY, EXPRESSED OR IMPLIED, IS MADE AS TO THE ACCURACY, COMPLETENESS OR USEFULNESS OF THE INFORMATION OR STATEMENTS CONTAINED IN THESE DRAWINGS, OR THAT THE DISCLOSURE OF ANY INFORMATION, APPARATUS, METHOD OR PROCESS DISCLOSED MAY NOT INFRINGE PRIVATE RIGHTS OF OTHERS. NO LIABILITY IS ASSUMED WITH RESPECT TO THE USE OF, OR FOR DAMAGES RESULTING FROM THE USE OF, ANY INFORMATION, APPARATUS, METHOD OR PROCESS DISCLOSED IN THESE DRAWINGS. DRAWINGS MADE AVAILABLE FOR INFORMATION TO BIDDER ARE NOT TO BE USED FOR OTHER PURPOSES AND ARE TO BE RETURNED UPON REQUEST OF THE FORWARDING CONTRACTOR.

NOTES

- 1. QUANTITY: 2.

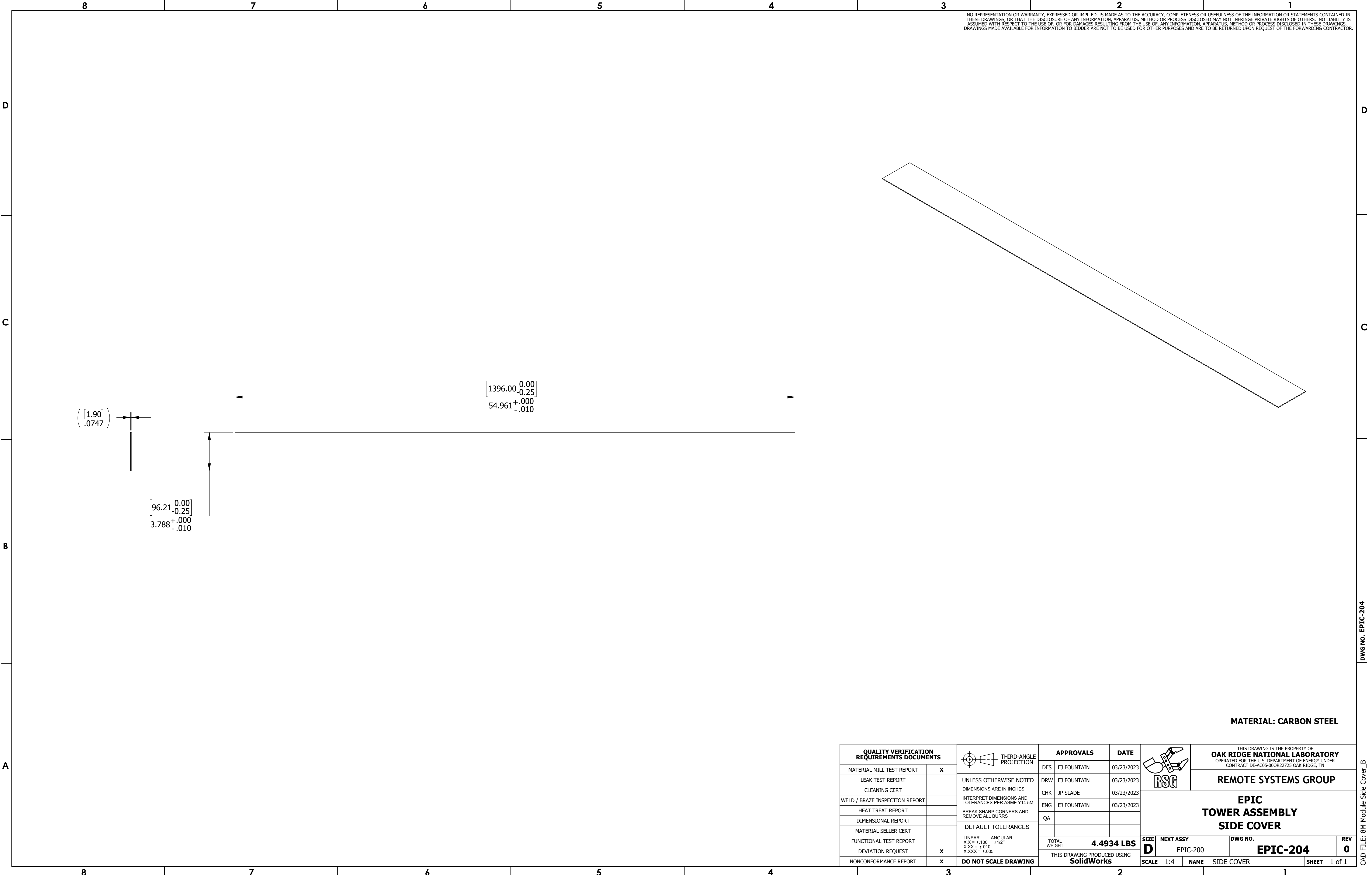


MATERIAL: CARBON STEEL

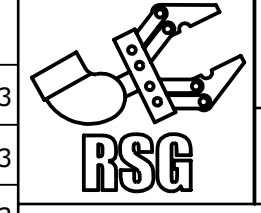
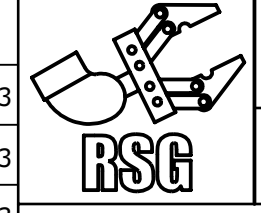
QUALITY VERIFICATION REQUIREMENTS DOCUMENTS		THIRD-ANGLE PROJECTION	APPROVALS		DATE		THIS DRAWING IS THE PROPERTY OF OAK RIDGE NATIONAL LABORATORY OPERATED FOR THE U.S. DEPARTMENT OF ENERGY UNDER CONTRACT DE-AC05-00OR22725 OAK RIDGE, TN				
DESCRIPTION	STATUS		DESIGNER	DATE	DATE		SIZE	NEXT ASSY	DWG NO.	REV	
MATERIAL MILL TEST REPORT	x	UNLESS OTHERWISE NOTED DIMENSIONS ARE IN INCHES INTERPRET DIMENSIONS AND TOLERANCES PER ASME Y14.5M BREAK SHARP CORNERS AND REMOVE ALL BURRS DEFAULT TOLERANCES LINEAR .XX = ±.100 ANGULAR .XX = ±.1/2 X.XX = ±.010 X.XXX = ±.005 DO NOT SCALE DRAWING	DES	EJ FOUNTAIN	03/16/2023		EPIC TOWER ASSEMBLY TOP / BOTTOM COVER				
LEAK TEST REPORT			DRW	EJ FOUNTAIN	03/16/2023		9.2208 LBS THIS DRAWING PRODUCED USING SolidWorks	D	EPIC-200	EPIC-203	0
CLEANING CERT			CHK	JP SLADE	03/24/2023						
WELD / BRAZE INSPECTION REPORT			ENG	EJ FOUNTAIN	03/16/2023						
HEAT TREAT REPORT			QA								
DIMENSIONAL REPORT											
MATERIAL SELLER CERT						TOTAL WEIGHT		DWG NO.		REV	
FUNCTIONAL TEST REPORT						9.2208 LBS	D	EPIC-200	EPIC-203	0	
DEVIATION REQUEST	x					THIS DRAWING PRODUCED USING SolidWorks		SCALE 1:4	NAME TOP / BOTTOM PLATE	SHEET 1 of 1	
NONCONFORMANCE REPORT	x										

DWG NO. EPIC-203
CAD FILE: 8M Module Top Bottom Plate_B

NO REPRESENTATION OR WARRANTY, EXPRESSED OR IMPLIED, IS MADE AS TO THE ACCURACY, COMPLETENESS OR USEFULNESS OF THE INFORMATION OR STATEMENTS CONTAINED IN THESE DRAWINGS, OR THAT THE DISCLOSURE OF ANY INFORMATION, APPARATUS, METHOD OR PROCESS DISCLOSED MAY NOT INFRINGE PRIVATE RIGHTS OF OTHERS. NO LIABILITY IS ASSUMED WITH RESPECT TO THE USE OF, OR FOR DAMAGES RESULTING FROM THE USE OF, ANY INFORMATION, APPARATUS, METHOD OR PROCESS DISCLOSED IN THESE DRAWINGS. DRAWINGS MADE AVAILABLE FOR INFORMATION TO BIDDER ARE NOT TO BE USED FOR OTHER PURPOSES AND ARE TO BE RETURNED UPON REQUEST OF THE FORWARDING CONTRACTOR.

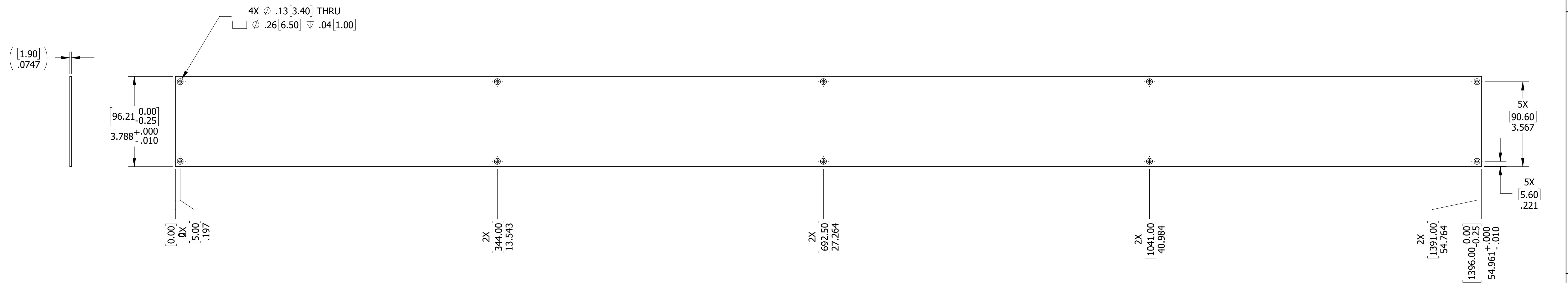
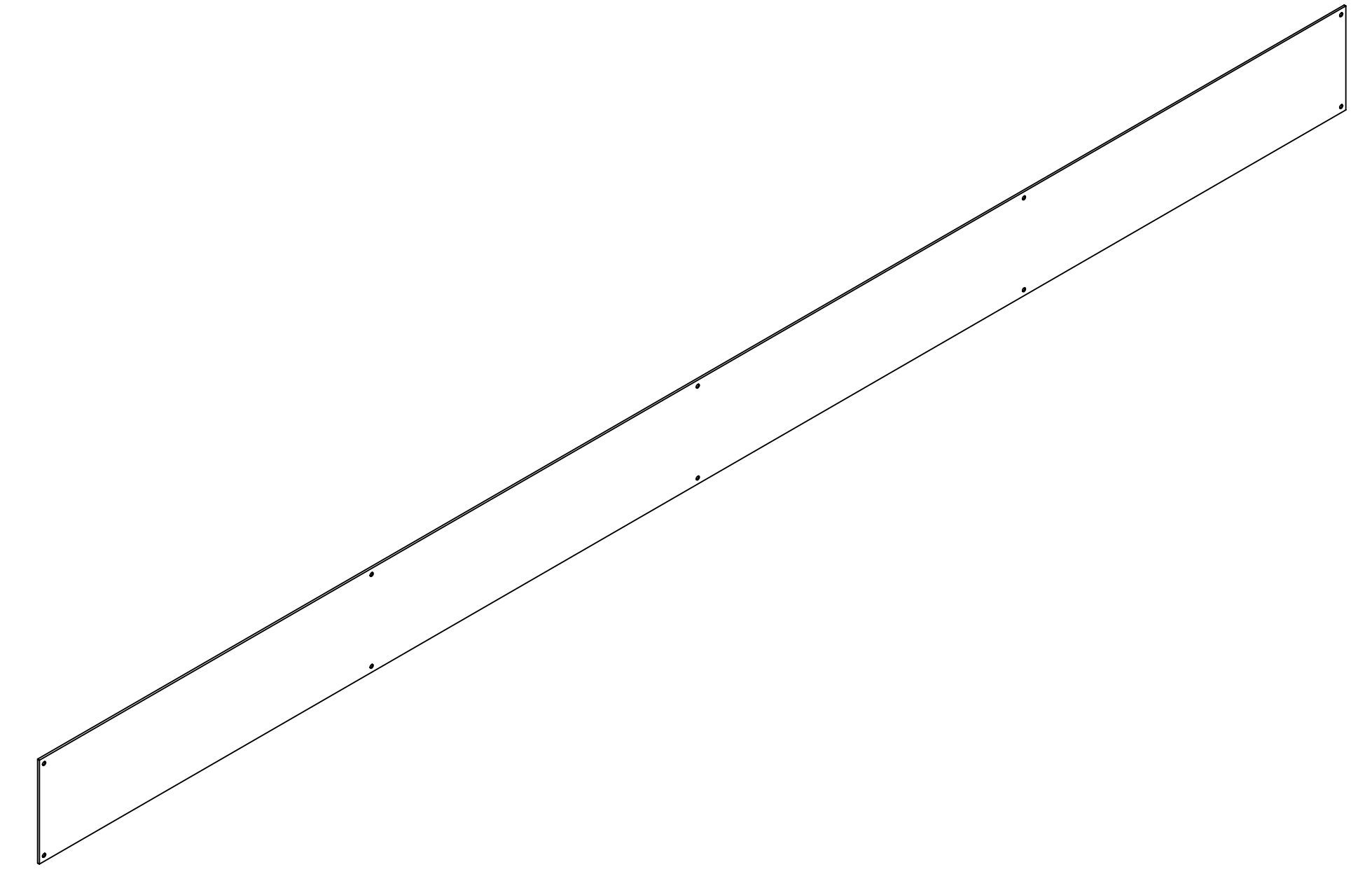


MATERIAL: CARBON STEEL

QUALITY VERIFICATION REQUIREMENTS DOCUMENTS		THIRD-ANGLE PROJECTION	APPROVALS		DATE		THIS DRAWING IS THE PROPERTY OF OAK RIDGE NATIONAL LABORATORY OPERATED FOR THE U.S. DEPARTMENT OF ENERGY UNDER CONTRACT DE-AC05-00OR22725 OAK RIDGE, TN		
DESCRIPTION	STATUS		DESIGNER	DATE	DATE		SIZE	NEXT ASSY	DWG NO.
MATERIAL MILL TEST REPORT	x	UNLESS OTHERWISE NOTED DIMENSIONS ARE IN INCHES INTERPRET DIMENSIONS AND TOLERANCES PER ASME Y14.5M BREAK SHARP CORNERS AND REMOVE ALL BURRS DEFAULT TOLERANCES LINEAR .XX = ±.100 ANGULAR .X/XX = ±.1/2 X.XX = ±.010 X.XXX = ±.005 DO NOT SCALE DRAWING	DES	EJ FOUNTAIN	03/23/2023		EPIC TOWER ASSEMBLY SIDE COVER THIS DRAWING PRODUCED USING SolidWorks SCALE 1:4 NAME SIDE COVER SHEET 1 of 1		
LEAK TEST REPORT			DRW	EJ FOUNTAIN	03/23/2023				
CLEANING CERT			CHK	JP SLADE	03/23/2023				
WELD / BRAZE INSPECTION REPORT			ENG	EJ FOUNTAIN	03/23/2023				
HEAT TREAT REPORT			QA			TOTAL WEIGHT	4.4934 LBS		
DIMENSIONAL REPORT			THIS DRAWING PRODUCED USING SolidWorks						
MATERIAL SELLER CERT			THIS DRAWING PRODUCED USING SolidWorks						
FUNCTIONAL TEST REPORT			THIS DRAWING PRODUCED USING SolidWorks						
DEVIATION REQUEST	x		THIS DRAWING PRODUCED USING SolidWorks						
NONCONFORMANCE REPORT	x		THIS DRAWING PRODUCED USING SolidWorks						

DWG NO. EPIC-204
CAD FILE: 8M Module Side Cover_B

NO REPRESENTATION OR WARRANTY, EXPRESSED OR IMPLIED, IS MADE AS TO THE ACCURACY, COMPLETENESS OR USEFULNESS OF THE INFORMATION OR STATEMENTS CONTAINED IN THESE DRAWINGS, OR THAT THE DISCLOSURE OF ANY INFORMATION, APPARATUS, METHOD OR PROCESS DISCLOSED MAY NOT INFRINGE PRIVATE RIGHTS OF OTHERS. NO LIABILITY IS ASSUMED WITH RESPECT TO THE USE OF, OR FOR DAMAGES RESULTING FROM THE USE OF, ANY INFORMATION, APPARATUS, METHOD OR PROCESS DISCLOSED IN THESE DRAWINGS. DRAWINGS MADE AVAILABLE FOR INFORMATION TO BIDDER ARE NOT TO BE USED FOR OTHER PURPOSES AND ARE TO BE RETURNED UPON REQUEST OF THE FORWARDING CONTRACTOR.



[1.90]
.0747

4X ϕ .13[3.40] THRU
 \square ϕ .26[6.50] ∇ .04[1.00]

[96.21 0.00]
-0.25
3.788^{+0.000}
-0.010

[0.00] 0X
[5.00] .197

2X [344.00] 13.543

2X [692.50] 27.264

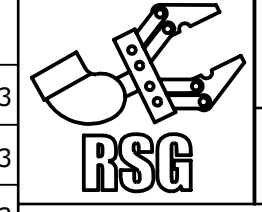
2X [1041.00] 40.984

2X [1391.00] 54.764

[1396.00 0.00]
54.961^{+0.000}
-0.010

5X [90.60] 3.567
5X [5.60] .221

MATERIAL: CARBON STEEL

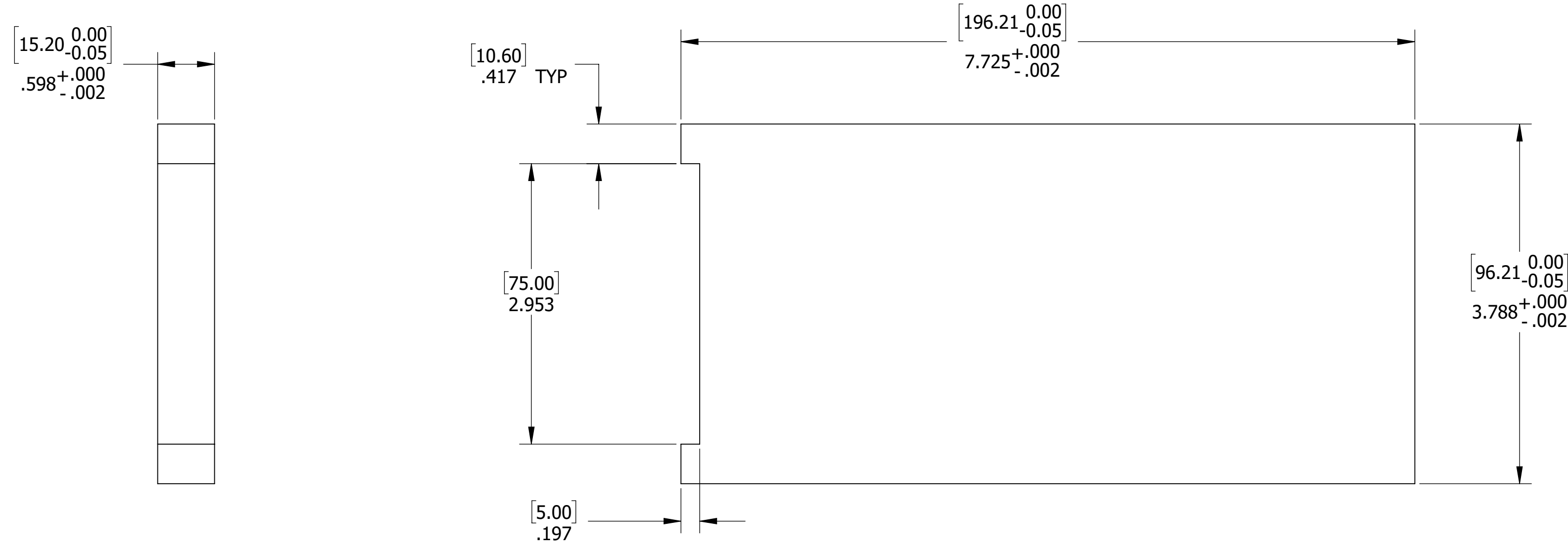
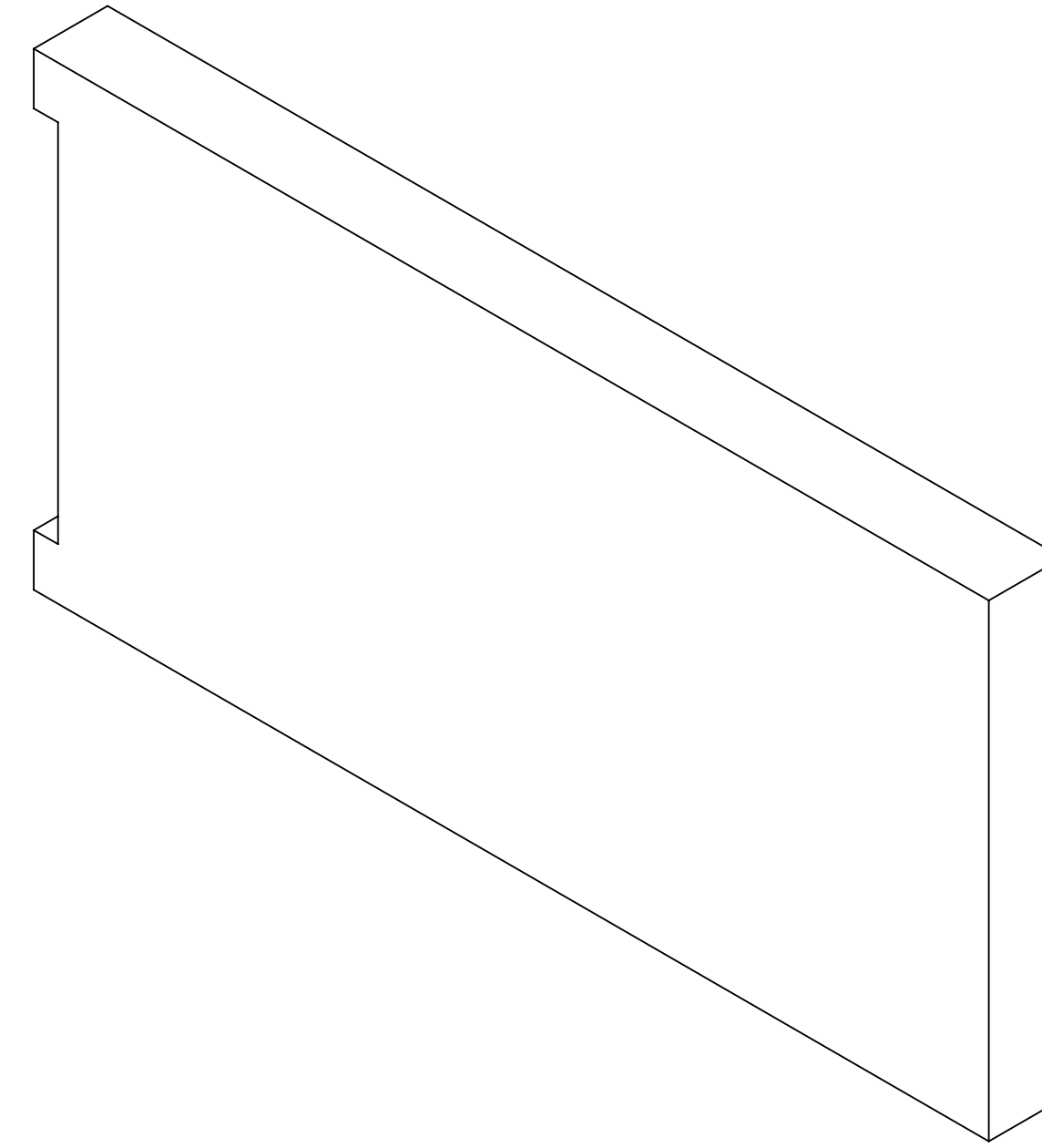
QUALITY VERIFICATION REQUIREMENTS DOCUMENTS		THIRD-ANGLE PROJECTION	APPROVALS		DATE		THIS DRAWING IS THE PROPERTY OF OAK RIDGE NATIONAL LABORATORY OPERATED FOR THE U.S. DEPARTMENT OF ENERGY UNDER CONTRACT DE-AC05-00OR22725 OAK RIDGE, TN	
MATERIAL MILL TEST REPORT	x		DES	EJ FOUNTAIN	03/17/2023		REMOTE SYSTEMS GROUP	
LEAK TEST REPORT		DRW	EJ FOUNTAIN	03/17/2023				
CLEANING CERT		CHK	JP SLADE	03/24/2023	EPIC TOWER ASSEMBLY PCB SIDE COVER			
WELD / BRAZE INSPECTION REPORT		ENG	EJ FOUNTAIN	03/17/2023				
HEAT TREAT REPORT		QA			SIZE D NEXT ASSY EPIC-200		DWG NO. EPIC-205	REV 0
DIMENSIONAL REPORT		TOTAL WEIGHT 4.4862 LBS		SCALE 1:2		NAME PCB COVER	SHEET 1 of 1	
MATERIAL SELLER CERT		THIS DRAWING PRODUCED USING SolidWorks						
FUNCTIONAL TEST REPORT		LINEAR .XX = ±.100 ANGULAR .XX = ±.100 .XXX = ±.010 .XXX = ±.010 .XXX = ±.005 .XXX = ±.005						
DEVIATION REQUEST	x	DO NOT SCALE DRAWING						
NONCONFORMANCE REPORT	x							

DWG NO. EPIC-205
CAD FILE: 8M Module Side Cover PCB_B

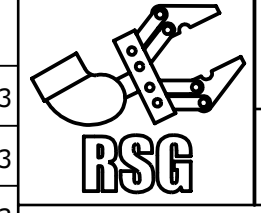
NO REPRESENTATION OR WARRANTY, EXPRESSED OR IMPLIED, IS MADE AS TO THE ACCURACY, COMPLETENESS OR USEFULNESS OF THE INFORMATION OR STATEMENTS CONTAINED IN THESE DRAWINGS, OR THAT THE DISCLOSURE OF ANY INFORMATION, APPARATUS, METHOD OR PROCESS DISCLOSED MAY NOT INFRINGE PRIVATE RIGHTS OF OTHERS. NO LIABILITY IS ASSUMED WITH RESPECT TO THE USE OF, OR FOR DAMAGES RESULTING FROM THE USE OF, ANY INFORMATION, APPARATUS, METHOD OR PROCESS DISCLOSED IN THESE DRAWINGS. DRAWINGS MADE AVAILABLE FOR INFORMATION TO BIDDER ARE NOT TO BE USED FOR OTHER PURPOSES AND ARE TO BE RETURNED UPON REQUEST OF THE FORWARDING CONTRACTOR.

NOTES

- 1. QUANTITY: 58.



MATERIAL: CARBON STEEL

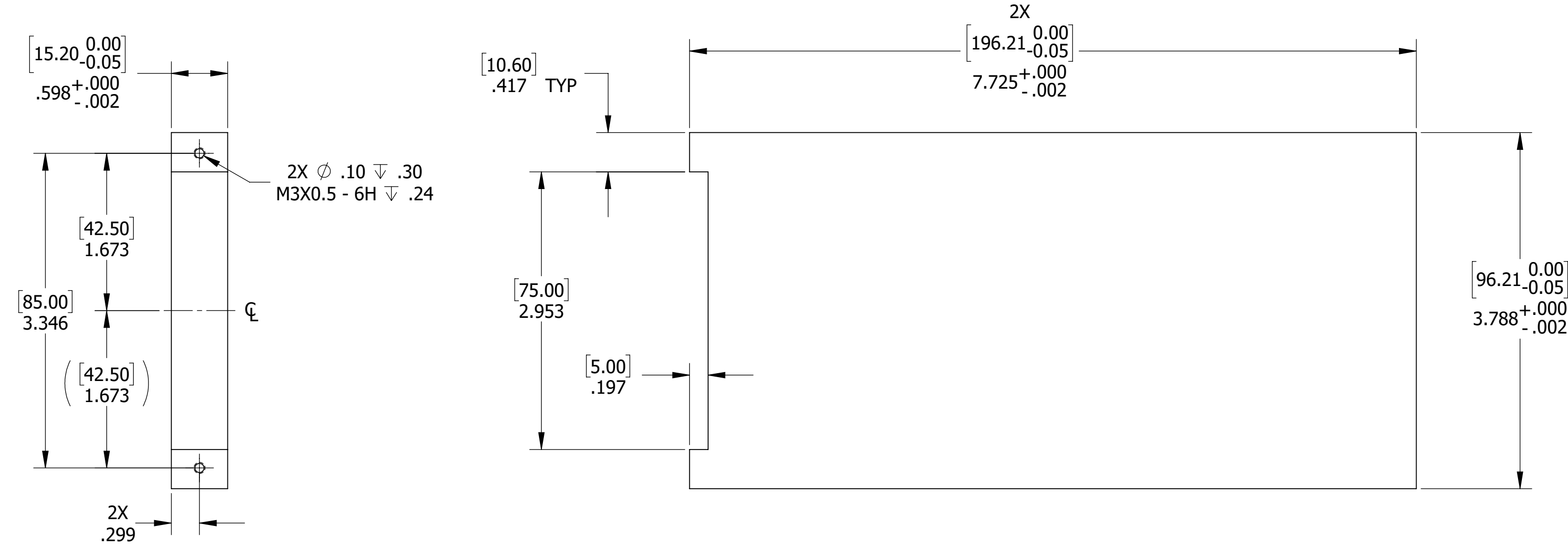
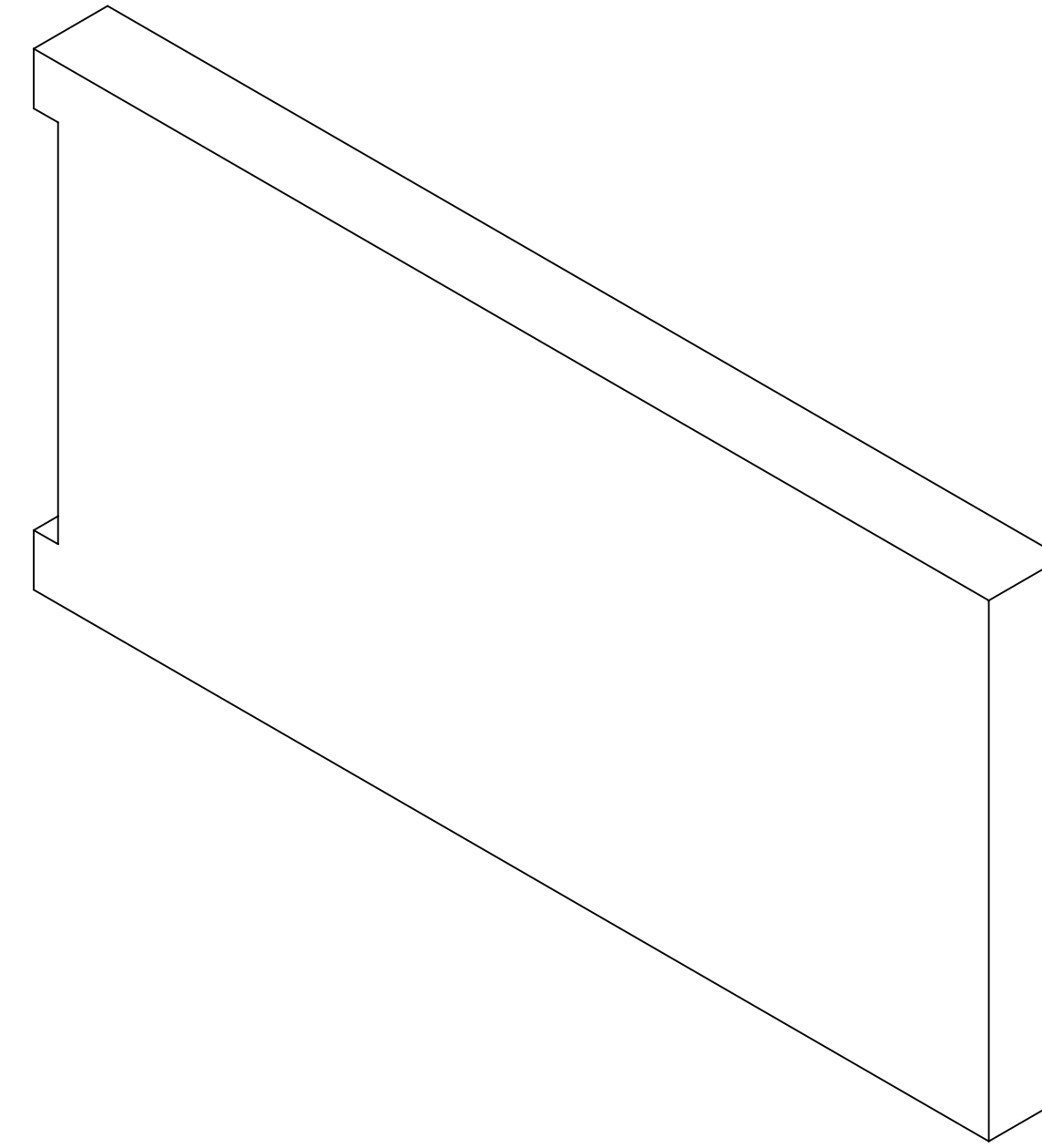
QUALITY VERIFICATION REQUIREMENTS DOCUMENTS		THIRD-ANGLE PROJECTION	APPROVALS		DATE		THIS DRAWING IS THE PROPERTY OF OAK RIDGE NATIONAL LABORATORY OPERATED FOR THE U.S. DEPARTMENT OF ENERGY UNDER CONTRACT DE-AC05-00OR22725 OAK RIDGE, TN		
DESCRIPTION	STATUS		DESIGNER	DATE	DATE		SIZE	NAME	SHEET
MATERIAL MILL TEST REPORT	x	UNLESS OTHERWISE NOTED DIMENSIONS ARE IN INCHES INTERPRET DIMENSIONS AND TOLERANCES PER ASME Y14.5M BREAK SHARP CORNERS AND REMOVE ALL BURRS DEFAULT TOLERANCES LINEAR .XX = ±.100 ANGULAR .X/XX = ±.1/2 X.XX = ±.010 X.XXX = ±.005 DO NOT SCALE DRAWING	DES	EJ FOUNTAIN	03/08/2023	D	NEXT ASSY EPIC-200	DWG NO. EPIC-206	REV 0
LEAK TEST REPORT			DRW	EJ FOUNTAIN	03/08/2023				
CLEANING CERT			CHK	JP SLADE	03/24/2023				
WELD / BRAZE INSPECTION REPORT			ENG	EJ FOUNTAIN	03/08/2023				
HEAT TREAT REPORT			QA			TOTAL WEIGHT 4.8978 LBS	SCALE 1:1	NAME STEEL ABSORBER PLATE	SHEET 1 of 1
DIMENSIONAL REPORT			THIS DRAWING PRODUCED USING SolidWorks						
MATERIAL SELLER CERT									
FUNCTIONAL TEST REPORT									
DEVIATION REQUEST	x								
NONCONFORMANCE REPORT	x								

DWG NO. EPIC-206
CAD FILE: 8M Absorber_Plate_B

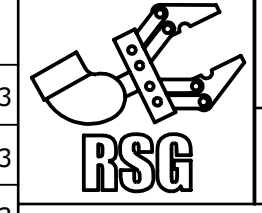
NO REPRESENTATION OR WARRANTY, EXPRESSED OR IMPLIED, IS MADE AS TO THE ACCURACY, COMPLETENESS OR USEFULNESS OF THE INFORMATION OR STATEMENTS CONTAINED IN THESE DRAWINGS, OR THAT THE DISCLOSURE OF ANY INFORMATION, APPARATUS, METHOD OR PROCESS DISCLOSED MAY NOT INFRINGE PRIVATE RIGHTS OF OTHERS. NO LIABILITY IS ASSUMED WITH RESPECT TO THE USE OF, OR FOR DAMAGES RESULTING FROM THE USE OF, ANY INFORMATION, APPARATUS, METHOD OR PROCESS DISCLOSED IN THESE DRAWINGS. DRAWINGS MADE AVAILABLE FOR INFORMATION TO BIDDER ARE NOT TO BE USED FOR OTHER PURPOSES AND ARE TO BE RETURNED UPON REQUEST OF THE FORWARDING CONTRACTOR.

NOTES

- 1. QUANTITY: 3.



MATERIAL: CARBON STEEL

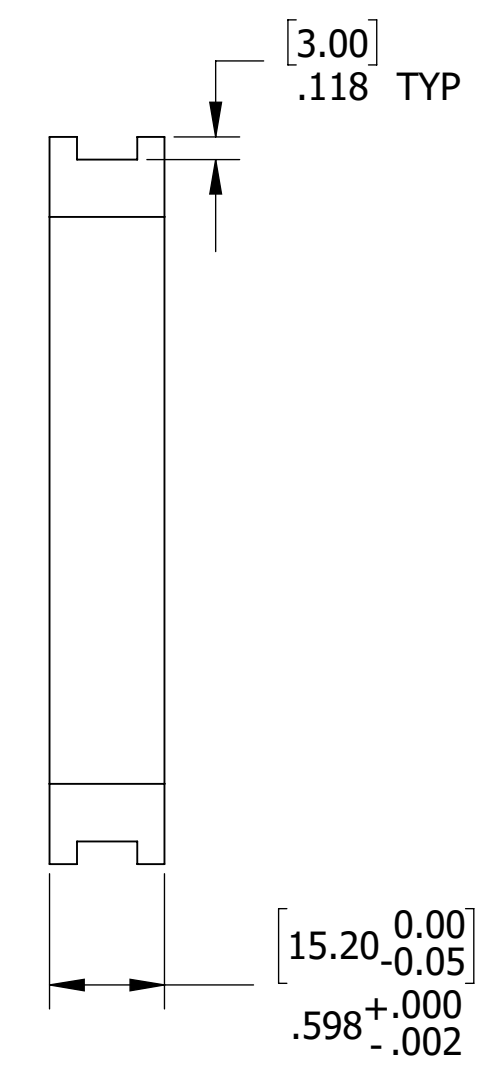
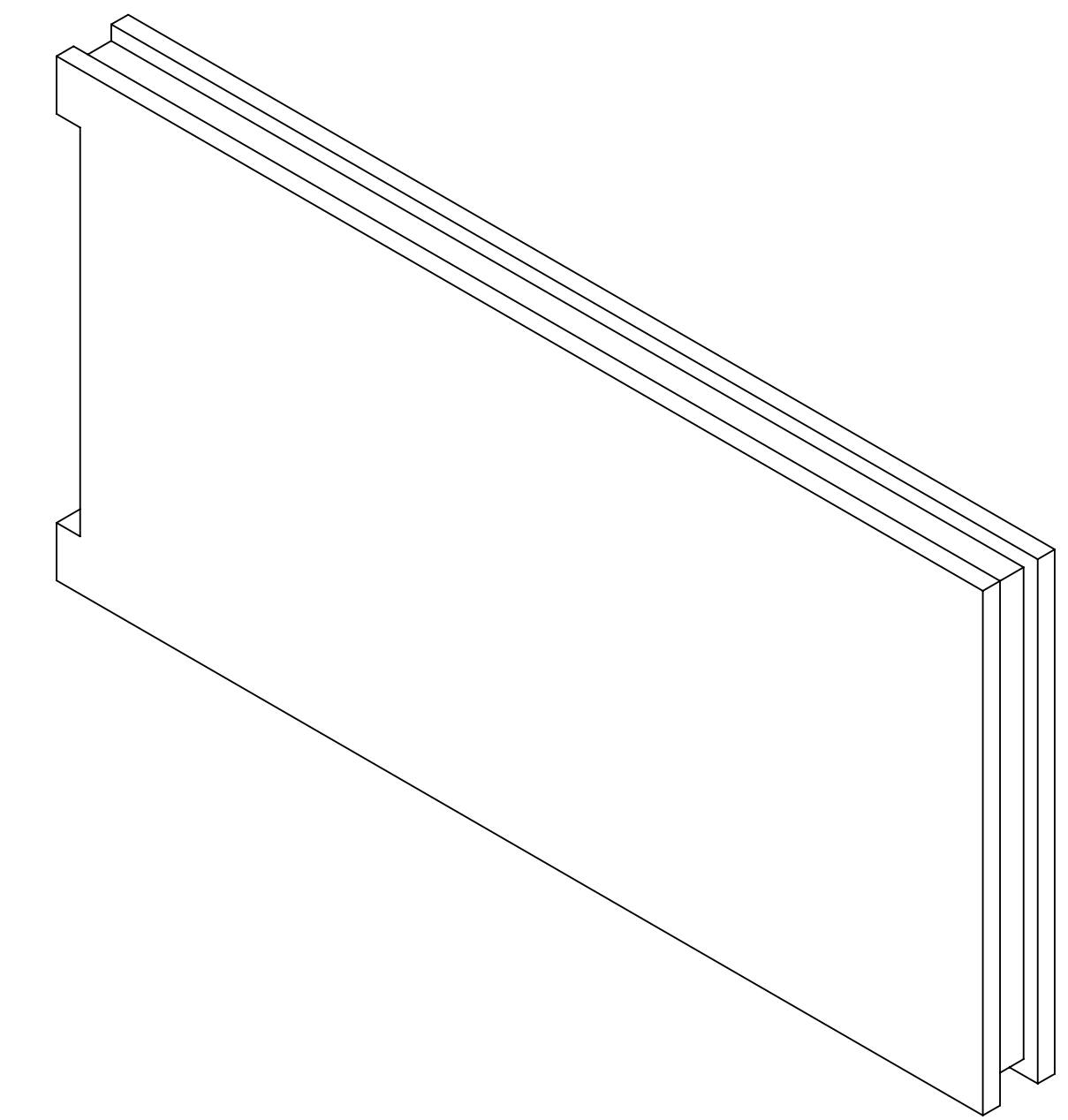
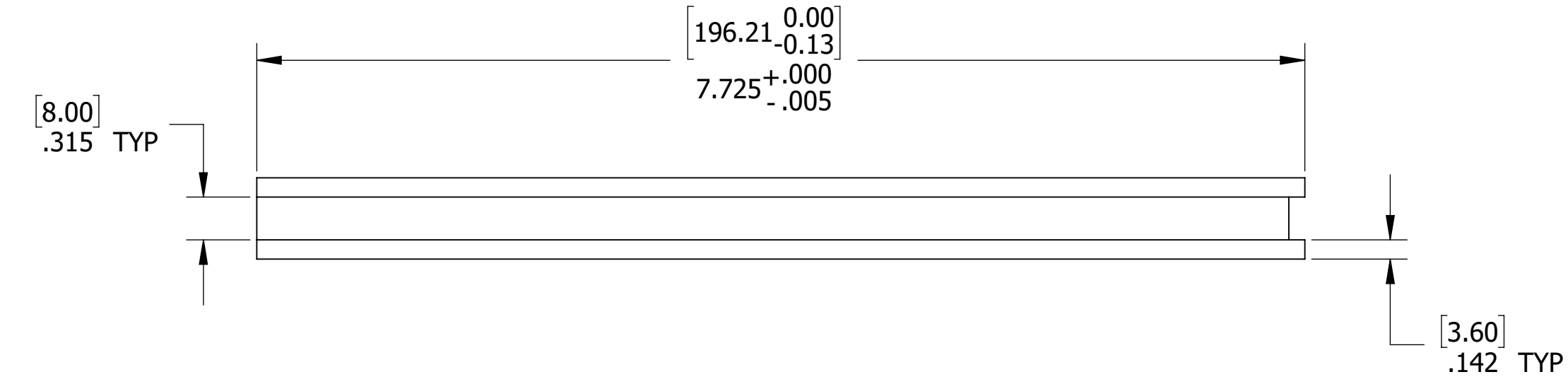
QUALITY VERIFICATION REQUIREMENTS DOCUMENTS		THIRD-ANGLE PROJECTION	APPROVALS		DATE		THIS DRAWING IS THE PROPERTY OF OAK RIDGE NATIONAL LABORATORY OPERATED FOR THE U.S. DEPARTMENT OF ENERGY UNDER CONTRACT DE-AC05-00OR22725 OAK RIDGE, TN				
DESCRIPTION	STATUS		DESIGNER	DATE	DATE		SIZE	NEXT ASSY	DWG NO.	REV	
MATERIAL MILL TEST REPORT	x	UNLESS OTHERWISE NOTED DIMENSIONS ARE IN INCHES INTERPRET DIMENSIONS AND TOLERANCES PER ASME Y14.5M BREAK SHARP CORNERS AND REMOVE ALL BURRS DEFAULT TOLERANCES LINEAR .XX = ±.100 .X/12 .XXX = ±.010 .XXX = ±.005 DO NOT SCALE DRAWING	DES	EJ FOUNTAIN	03/08/2023	D	EPIC-200	EPIC-207	0		
LEAK TEST REPORT			DRW	EJ FOUNTAIN	03/08/2023						
CLEANING CERT			CHK	JP SLADE	03/24/2023						
WELD / BRAZE INSPECTION REPORT			ENG	EJ FOUNTAIN	03/08/2023						
HEAT TREAT REPORT			QA								
DIMENSIONAL REPORT			TOTAL WEIGHT		4.8965 LBS	SCALE	1:1	NAME	STEEL ABSORBER PLATE, TAPPED	SHEET	1 of 1
MATERIAL SELLER CERT			THIS DRAWING PRODUCED USING		SolidWorks						
FUNCTIONAL TEST REPORT											
DEVIATION REQUEST	x										
NONCONFORMANCE REPORT	x										

DWG NO. EPIC-207
CAD FILE: 8M Absorber_Plate_Tapped_B

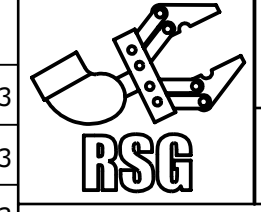
NO REPRESENTATION OR WARRANTY, EXPRESSED OR IMPLIED, IS MADE AS TO THE ACCURACY, COMPLETENESS OR USEFULNESS OF THE INFORMATION OR STATEMENTS CONTAINED IN THESE DRAWINGS, OR THAT THE DISCLOSURE OF ANY INFORMATION, APPARATUS, METHOD OR PROCESS DISCLOSED MAY NOT INFRINGE PRIVATE RIGHTS OF OTHERS. NO LIABILITY IS ASSUMED WITH RESPECT TO THE USE OF, OR FOR DAMAGES RESULTING FROM THE USE OF, ANY INFORMATION, APPARATUS, METHOD OR PROCESS DISCLOSED IN THESE DRAWINGS. DRAWINGS MADE AVAILABLE FOR INFORMATION TO BIDDER ARE NOT TO BE USED FOR OTHER PURPOSES AND ARE TO BE RETURNED UPON REQUEST OF THE FORWARDING CONTRACTOR.

NOTES

- 1. QUANTITY: 4.



MATERIAL: TUNGSTEN (W 6Ni-4Cu)

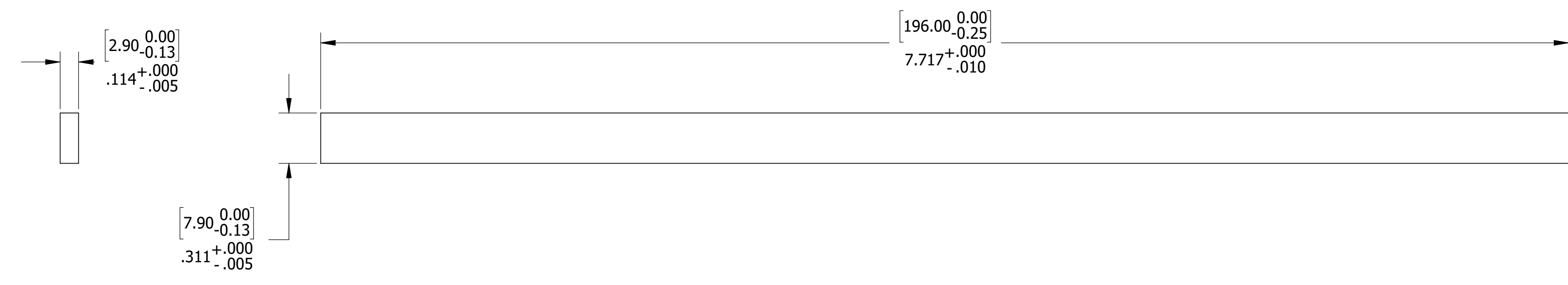
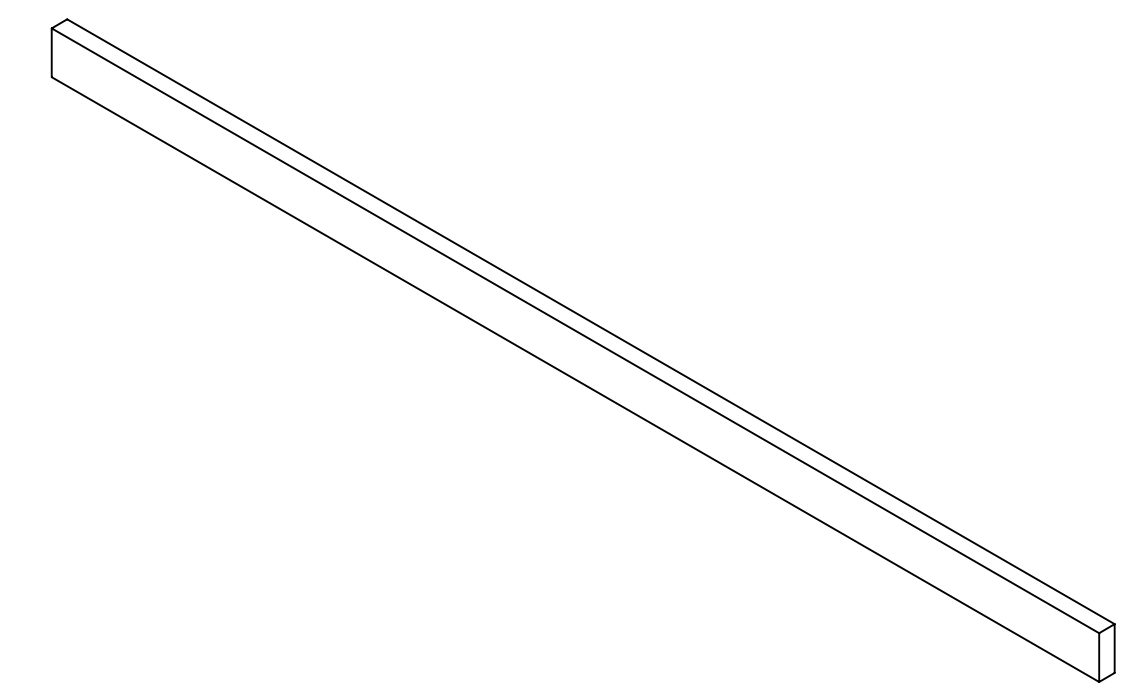
QUALITY VERIFICATION REQUIREMENTS DOCUMENTS		THIRD-ANGLE PROJECTION	APPROVALS		DATE		THIS DRAWING IS THE PROPERTY OF OAK RIDGE NATIONAL LABORATORY OPERATED FOR THE U.S. DEPARTMENT OF ENERGY UNDER CONTRACT DE-AC05-00OR22725 OAK RIDGE, TN				
DESCRIPTION	STATUS		DESIGNER	DATE	DATE		SIZE	NEXT ASSY	DWG NO.	REV	
MATERIAL MILL TEST REPORT	X	UNLESS OTHERWISE NOTED DIMENSIONS ARE IN INCHES INTERPRET DIMENSIONS AND TOLERANCES PER ASME Y14.5M BREAK SHARP CORNERS AND REMOVE ALL BURRS DEFAULT TOLERANCES LINEAR .XX = ±.100 ANGULAR .X/XX = ±.010 X.XXX = ±.010 X.XXXX = ±.005 DO NOT SCALE DRAWING	DES	EJ FOUNTAIN	03/07/2023	D	EPIC-200	EPIC-208	0		
LEAK TEST REPORT			DRW	EJ FOUNTAIN	03/07/2023						
CLEANING CERT			CHK	JP SLADE	03/24/2023						
WELD / BRAZE INSPECTION REPORT			ENG	EJ FOUNTAIN	03/07/2023						
HEAT TREAT REPORT			QA								
DIMENSIONAL REPORT			TOTAL WEIGHT		11.2944 LBS	SCALE	1:1	NAME	TUNGSTEN ABSORBER PLATE	SHEET	1 of 1
MATERIAL SELLER CERT			THIS DRAWING PRODUCED USING		SolidWorks	THIS DRAWING IS THE PROPERTY OF OAK RIDGE NATIONAL LABORATORY OPERATED FOR THE U.S. DEPARTMENT OF ENERGY UNDER CONTRACT DE-AC05-00OR22725 OAK RIDGE, TN		EPIC TOWER ASSEMBLY TUNGSTEN ABSORBER PLATE			
FUNCTIONAL TEST REPORT			THIS DRAWING PRODUCED USING SolidWorks		THIS DRAWING IS THE PROPERTY OF OAK RIDGE NATIONAL LABORATORY OPERATED FOR THE U.S. DEPARTMENT OF ENERGY UNDER CONTRACT DE-AC05-00OR22725 OAK RIDGE, TN		EPIC TOWER ASSEMBLY TUNGSTEN ABSORBER PLATE				
DEVIATION REQUEST	X		THIS DRAWING IS THE PROPERTY OF OAK RIDGE NATIONAL LABORATORY OPERATED FOR THE U.S. DEPARTMENT OF ENERGY UNDER CONTRACT DE-AC05-00OR22725 OAK RIDGE, TN		THIS DRAWING IS THE PROPERTY OF OAK RIDGE NATIONAL LABORATORY OPERATED FOR THE U.S. DEPARTMENT OF ENERGY UNDER CONTRACT DE-AC05-00OR22725 OAK RIDGE, TN		EPIC TOWER ASSEMBLY TUNGSTEN ABSORBER PLATE				
NONCONFORMANCE REPORT	X		THIS DRAWING IS THE PROPERTY OF OAK RIDGE NATIONAL LABORATORY OPERATED FOR THE U.S. DEPARTMENT OF ENERGY UNDER CONTRACT DE-AC05-00OR22725 OAK RIDGE, TN		THIS DRAWING IS THE PROPERTY OF OAK RIDGE NATIONAL LABORATORY OPERATED FOR THE U.S. DEPARTMENT OF ENERGY UNDER CONTRACT DE-AC05-00OR22725 OAK RIDGE, TN		EPIC TOWER ASSEMBLY TUNGSTEN ABSORBER PLATE				

DWG NO. EPIC-208
CAD FILE: 8M Tungsten Absorber Plate_B

NO REPRESENTATION OR WARRANTY, EXPRESSED OR IMPLIED, IS MADE AS TO THE ACCURACY, COMPLETENESS OR USEFULNESS OF THE INFORMATION OR STATEMENTS CONTAINED IN THESE DRAWINGS, OR THAT THE DISCLOSURE OF ANY INFORMATION, APPARATUS, METHOD OR PROCESS DISCLOSED MAY NOT INFRINGE PRIVATE RIGHTS OF OTHERS. NO LIABILITY IS ASSUMED WITH RESPECT TO THE USE OF, OR FOR DAMAGES RESULTING FROM THE USE OF, ANY INFORMATION, APPARATUS, METHOD OR PROCESS DISCLOSED IN THESE DRAWINGS. DRAWINGS MADE AVAILABLE FOR INFORMATION TO BIDDER ARE NOT TO BE USED FOR OTHER PURPOSES AND ARE TO BE RETURNED UPON REQUEST OF THE FORWARDING CONTRACTOR.

NOTES

- 1. QUANTITY: 8.



MATERIAL: CARBON STEEL

QUALITY VERIFICATION REQUIREMENTS DOCUMENTS		THIRD-ANGLE PROJECTION	APPROVALS		DATE		THIS DRAWING IS THE PROPERTY OF OAK RIDGE NATIONAL LABORATORY OPERATED FOR THE U.S. DEPARTMENT OF ENERGY UNDER CONTRACT DE-AC05-00OR22725 OAK RIDGE, TN				
DESCRIPTION	STATUS		DESIGNER	DATE	DATE		SIZE	NEXT ASSY	DWG NO.	REV	
MATERIAL MILL TEST REPORT	X	UNLESS OTHERWISE NOTED DIMENSIONS ARE IN INCHES INTERPRET DIMENSIONS AND TOLERANCES PER ASME Y14.5M BREAK SHARP CORNERS AND REMOVE ALL BURRS DEFAULT TOLERANCES LINEAR .XX = ±.100 .X/12 .XXX = ±.010 .XXX = ±.005 DO NOT SCALE DRAWING	DES	EJ FOUNTAIN	03/24/2023		EPIC TOWER ASSEMBLY LONG SHIM				
LEAK TEST REPORT			DRW	EJ FOUNTAIN	03/24/2023		0.0772 LBS	D	EPIC-200	EPIC-209	0
CLEANING CERT			CHK	JP SLADE	03/24/2023						
WELD / BRAZE INSPECTION REPORT			ENG	EJ FOUNTAIN	03/24/2023						
HEAT TREAT REPORT			QA								
DIMENSIONAL REPORT											
MATERIAL SELLER CERT											
FUNCTIONAL TEST REPORT											
DEVIATION REQUEST	X										
NONCONFORMANCE REPORT	X										

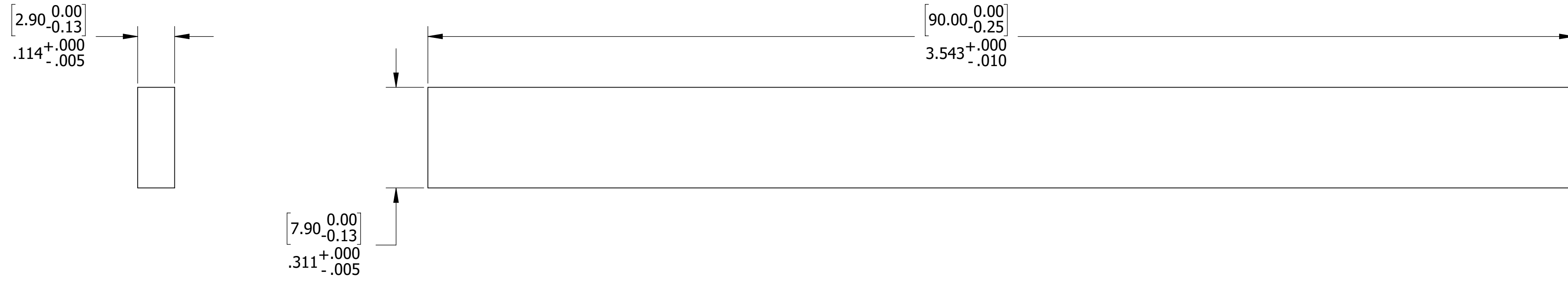
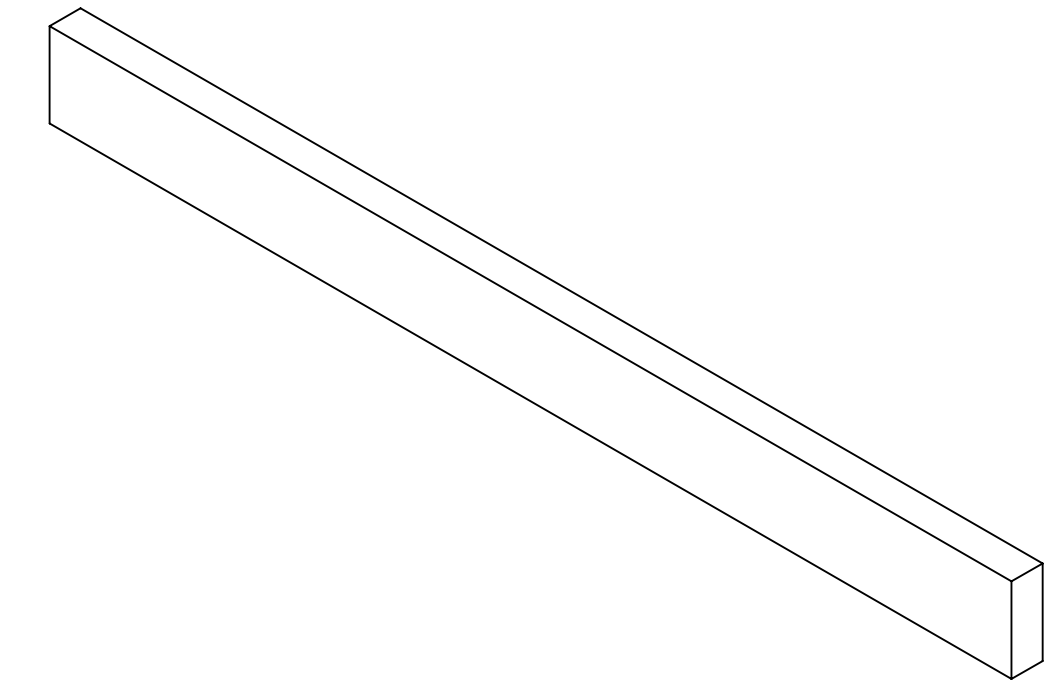
DWG NO. EPIC-209

CAD FILE: Absorber_Plate_Shm

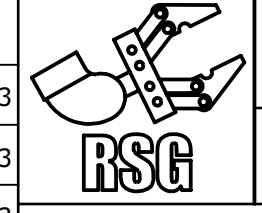
NO REPRESENTATION OR WARRANTY, EXPRESSED OR IMPLIED, IS MADE AS TO THE ACCURACY, COMPLETENESS OR USEFULNESS OF THE INFORMATION OR STATEMENTS CONTAINED IN THESE DRAWINGS, OR THAT THE DISCLOSURE OF ANY INFORMATION, APPARATUS, METHOD OR PROCESS DISCLOSED MAY NOT INFRINGE PRIVATE RIGHTS OF OTHERS. NO LIABILITY IS ASSUMED WITH RESPECT TO THE USE OF, OR FOR DAMAGES RESULTING FROM THE USE OF, ANY INFORMATION, APPARATUS, METHOD OR PROCESS DISCLOSED IN THESE DRAWINGS. DRAWINGS MADE AVAILABLE FOR INFORMATION TO BIDDER ARE NOT TO BE USED FOR OTHER PURPOSES AND ARE TO BE RETURNED UPON REQUEST OF THE FORWARDING CONTRACTOR.

NOTES

- 1. QUANTITY: 4.



MATERIAL: CARBON STEEL

QUALITY VERIFICATION REQUIREMENTS DOCUMENTS		THIRD-ANGLE PROJECTION	APPROVALS		DATE		THIS DRAWING IS THE PROPERTY OF OAK RIDGE NATIONAL LABORATORY OPERATED FOR THE U.S. DEPARTMENT OF ENERGY UNDER CONTRACT DE-AC05-00OR22725 OAK RIDGE, TN				
REQUIREMENT	STATUS		DESIGNER	DATE	DATE		SIZE	NEXT ASSY	DWG NO.	REV	
MATERIAL MILL TEST REPORT	X	UNLESS OTHERWISE NOTED DIMENSIONS ARE IN INCHES INTERPRET DIMENSIONS AND TOLERANCES PER ASME Y14.5M BREAK SHARP CORNERS AND REMOVE ALL BURRS DEFAULT TOLERANCES LINEAR .XX = ±.100 ANGULAR .X/XX = ±.100 .XXX = ±.010 .X/XXX = ±.005 DO NOT SCALE DRAWING	DES	EJ FOUNTAIN	03/24/2023	D	EPIC-200	EPIC-210	0		
LEAK TEST REPORT			DRW	EJ FOUNTAIN	03/24/2023						
CLEANING CERT			CHK	JP SLADE	03/24/2023						
WELD / BRAZE INSPECTION REPORT			ENG	EJ FOUNTAIN	03/24/2023						
HEAT TREAT REPORT			QA								
DIMENSIONAL REPORT			TOTAL WEIGHT		0.0355 LBS	SCALE	4:1	NAME	SHORT SHIM	SHEET	1 of 1
MATERIAL SELLER CERT			THIS DRAWING PRODUCED USING		SolidWorks						
FUNCTIONAL TEST REPORT											
DEVIATION REQUEST	X										
NONCONFORMANCE REPORT	X										

DWG NO. EPIC-210
CAD FILE: Absorber Plate Shim_Short