



# This Is Brookhaven Lab

Briefing for MSIs in Nuclear and Particle Physics

Jack Anderson, Interim Laboratory Director

July 18, 2023

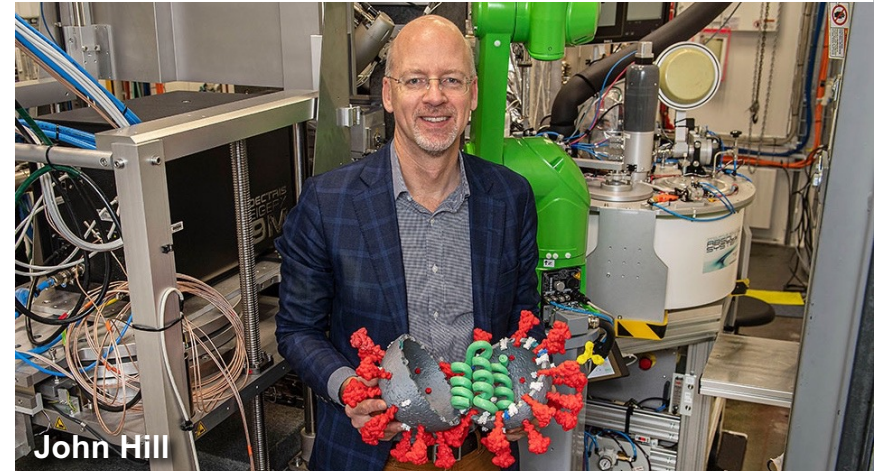




# Brookhaven National Laboratory

## A Multipurpose DOE Office of Science Lab

- Managed for the U.S Department of Energy (DOE) by Brookhaven Science Associates. BSA is a partnership among Stony Brook University and Battelle Memorial Institute.
- BSA Board: Representatives from Columbia, Cornell, Harvard, MIT, Princeton, and Yale
- Operating principle: simultaneous excellence in science and technology, operations, and community engagement
- People
  - 2,760 staff
  - 4,400 facility users and guests
  - 140 joint faculty
  - Pre-COVID: 30,000+ students and educators (K-12) annually
  - 500 students
- Budget: \$704 million (based on FY22 costs)
- Regional economic impact:
  - Supports over 4,700 jobs in New York State
  - Strong relationship with New York State: \$400M invested by NYS since 2013
  - Long Island Rail Road station near Discovery Park
- Seven Nobel Prize-winning discoveries, 21 laureates



# Enduring Priorities and Science Initiatives

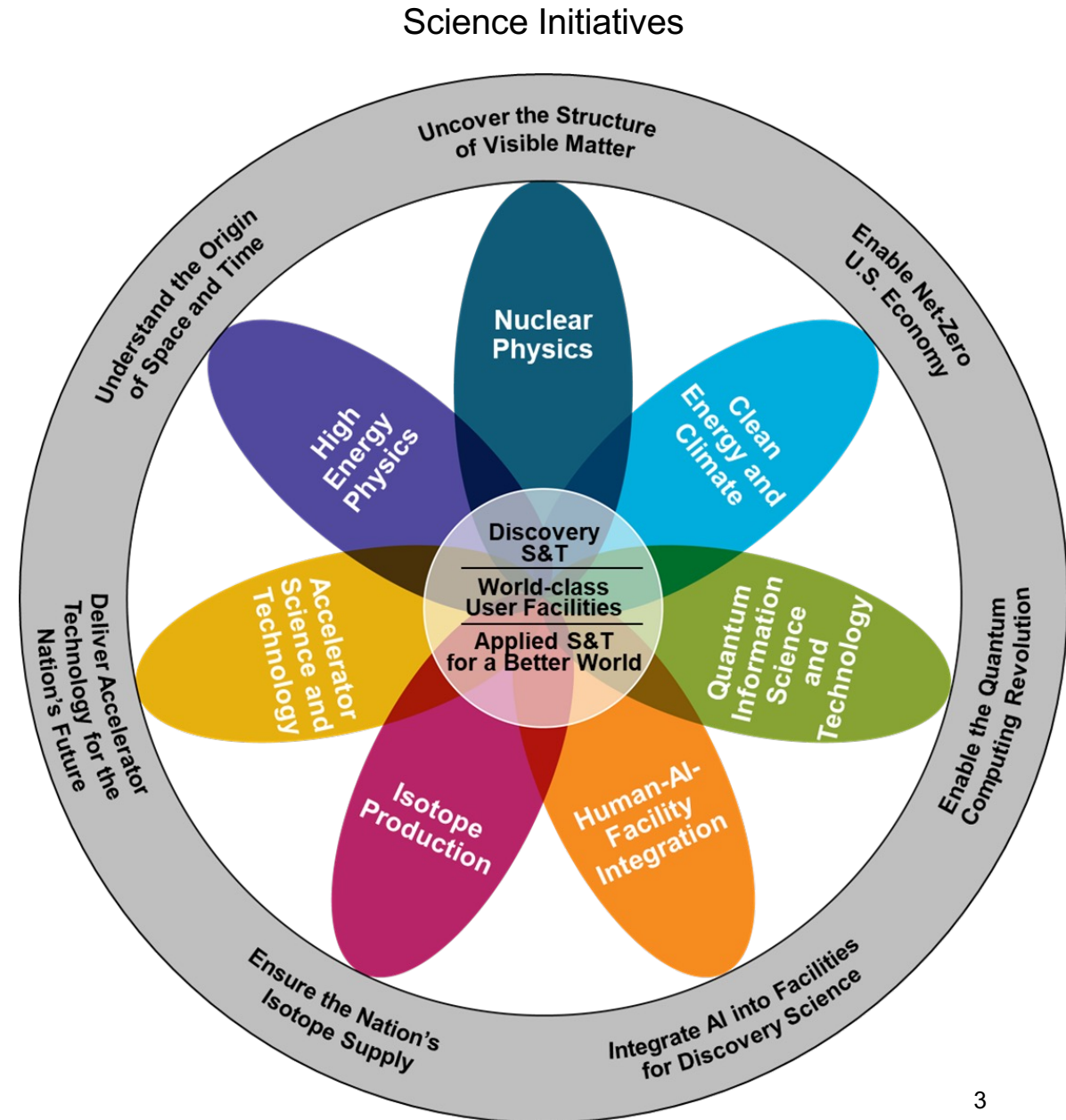
Brookhaven's enduring priorities:

- Discovery science and technology
- Transformational user facilities, including accelerator science and technology
- Applications of the Lab's capabilities to new opportunities, e.g., clean energy, climate, and national security solutions; isotopes

Enabled by:

- Safe, efficient, and secure operations
- Diversity, equity, and inclusivity

Enhanced by DOE, national lab, NYS, university, industrial, and international partners





# Brookhaven Lab Today



NASA Space  
Radiation Lab

Relativistic Heavy Ion Collider,  
future Electron-Ion Collider

Brookhaven Linac  
Isotope Producer

Environmental &  
Climate Sciences

Accelerator  
Test Facility

Northeast  
Solar Energy  
Research Center

Superconducting  
Magnet Division

Physics

Instrumentation

Computational  
Science

Long Island  
Solar Farm

Chemistry

Biology, More

Interdisciplinary  
Science Bldg.  
for Energy

Center for  
Functional  
Nanomaterials

National Synchrotron  
Light Source II

Environment,  
Nonproliferation,  
and More

Lab for BioMolecular  
Structure (Cryo-EM)



# Discovery Park at the Gateway to Brookhaven Lab

An aerial architectural rendering of the Discovery Park development. The image shows a cluster of modern, multi-story research buildings with large glass facades and flat roofs, interspersed with extensive parking areas filled with cars. The development is surrounded by a dense forest of tall evergreen trees. A road with a roundabout is visible on the left side of the image. The overall scene is presented in a bright, clear daylight setting.

Discovery Park will offer a flexible platform to advance science and technology-based economic development for Long Island, New York State, and beyond.

It will also create new opportunities for outreach, workforce development, and educational programs, including for underserved communities.



# Workforce Development

Stay in Touch  
Follow @BrookhavenLab



[www.bnl.gov/](http://www.bnl.gov/)



- Pre-COVID: 30,000+ K-12 participants annually (students and educators)
- Approx. 300 undergrads per year
  - FY17-21: 45% female, 39% underrepresented groups

