



**Brookhaven**  
National Laboratory

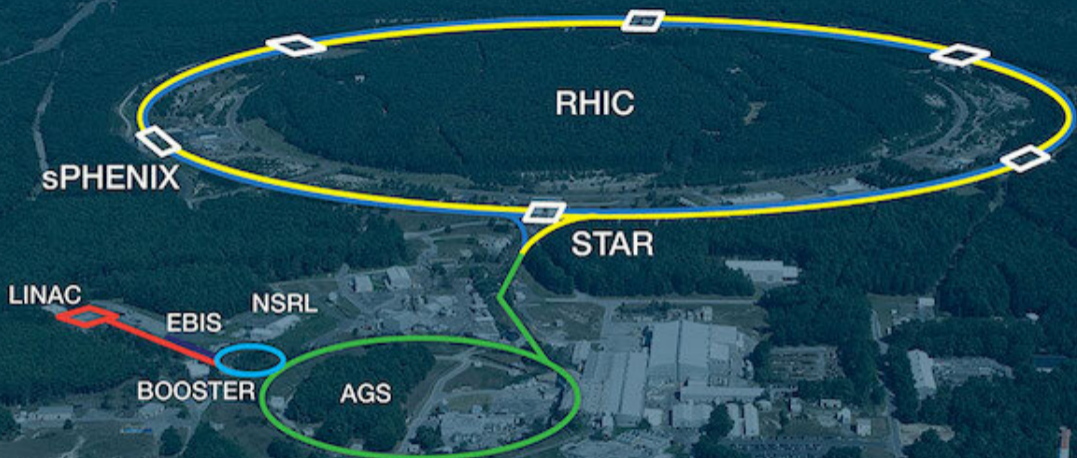
---

# RETREAT FOR POSTDOCTORAL RESEARCH ASSOCIATES

**Ejiro Umaka (BNL)**

August 25, 2023

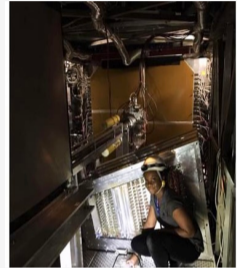
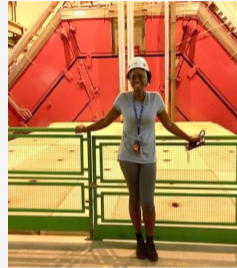




*sPHENIX is a first new detector in RHIC in over 20 years!*

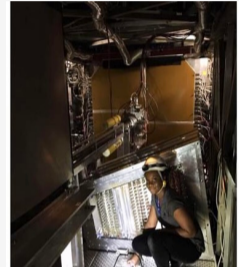
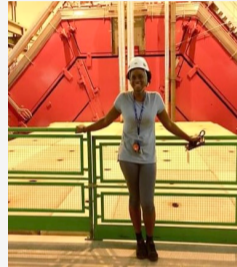
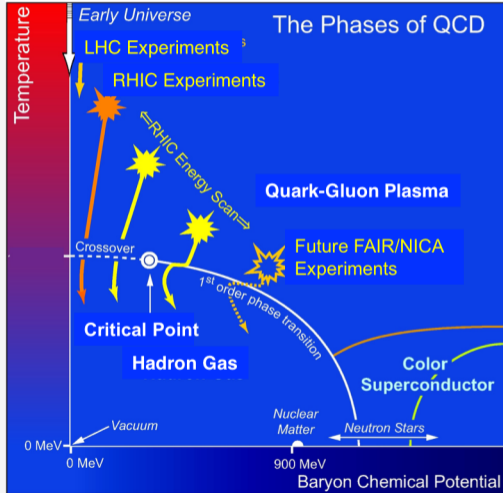
*Required to complete RHIC's scientific mission of probing the inner workings of quark-gluon plasma (QGP)*

# PHD PROGRAM



- PhD with University of Houston in ALICE at the LHC
- Studied QCD crossover temperature
- Completed in 2020

# PHD PROGRAM



- PhD with University of Houston in ALICE at the LHC
- Studied QCD crossover temperature
- Completed in 2020

# PD: MOVED TO AMES, IOWA IN 2020



- In the middle of COVID lockdown
- I moved  $\approx$  1000 miles to work remotely 10 mins away from ISU



John Guy Lajoie 13:03

NICE TALK EJIRO!



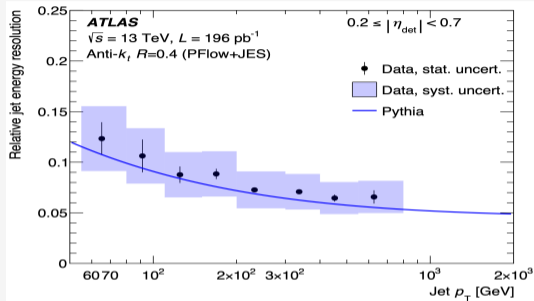
... and apparently Slack doesn't do animated GIFs....

- ...but I had a hilarious advisor...
- I was affiliated with sPHENIX & ATLAS

# PD: MOVED TO BNL IN 2021



- (Still with ISU) worked on the construction of hadronic calorimeter (for jet measurements)



- Completed a QT in ATLAS (dijet balance method to determine jet energy resolution)
- Lots of simulation studies in sPHENIX (HCALs, jet underlying event, cosmic muon studies ...)

# PD: JOINED BNL IN 2022

- Lots of software work for sPHENIX event plane detector, ZDC commissioning work, MBD event plane measurement with commissioning data.

## Research topic

- jet yield as a function of the azimuthal distance from the event plane
- Study the path-length dependence of jet energy loss
- Looking forward to sPHENIX physics data!

