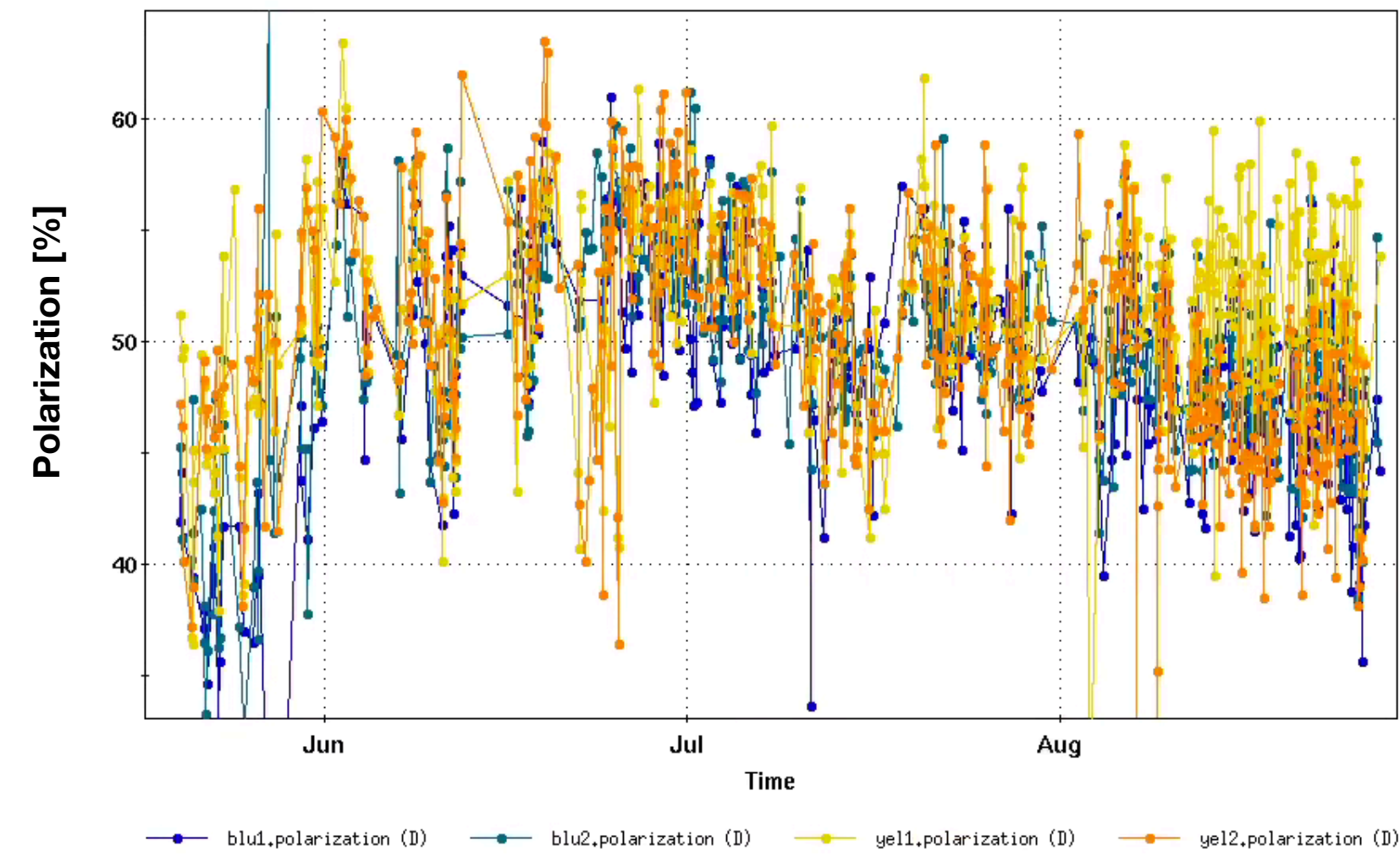
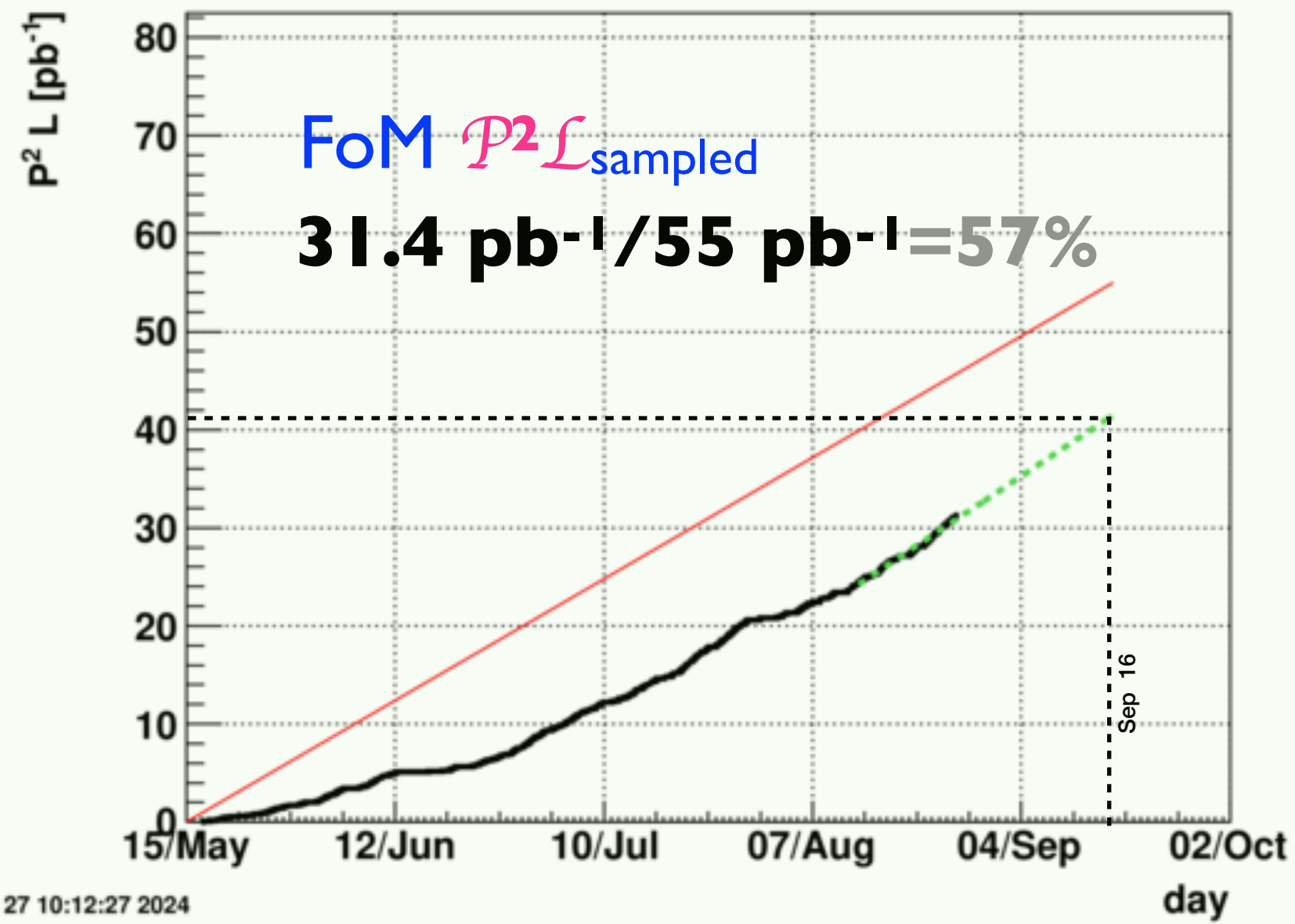
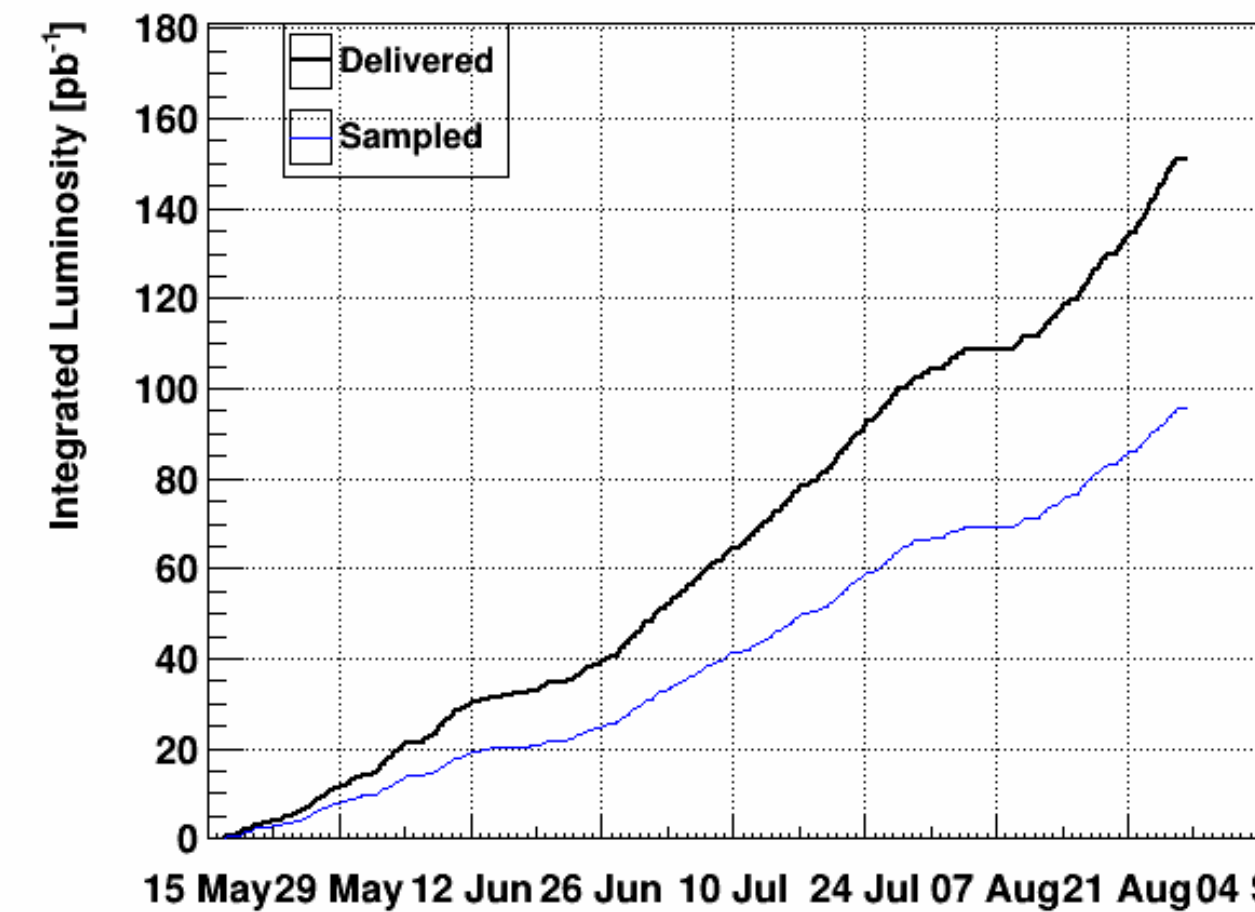
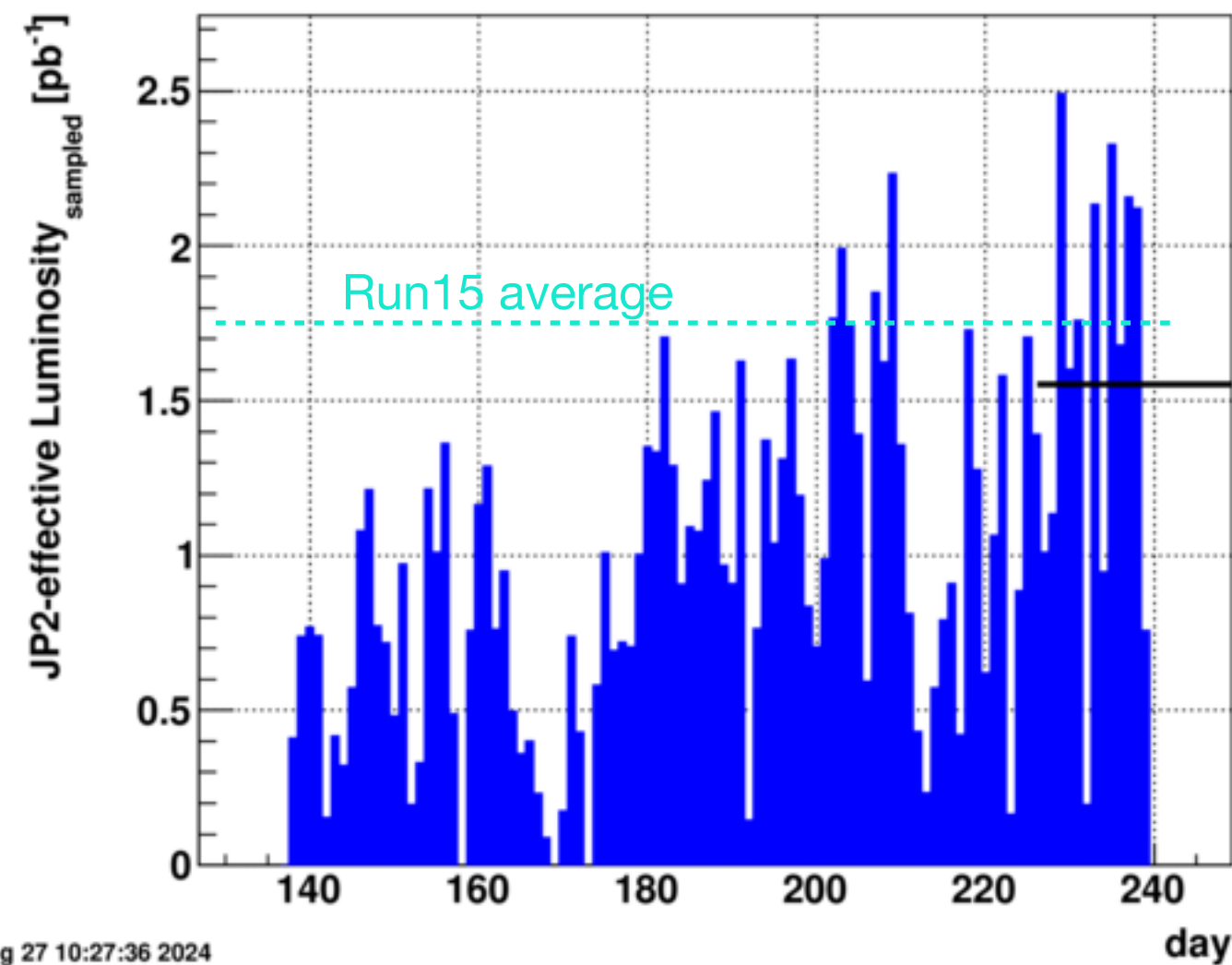


# p+p in Run24

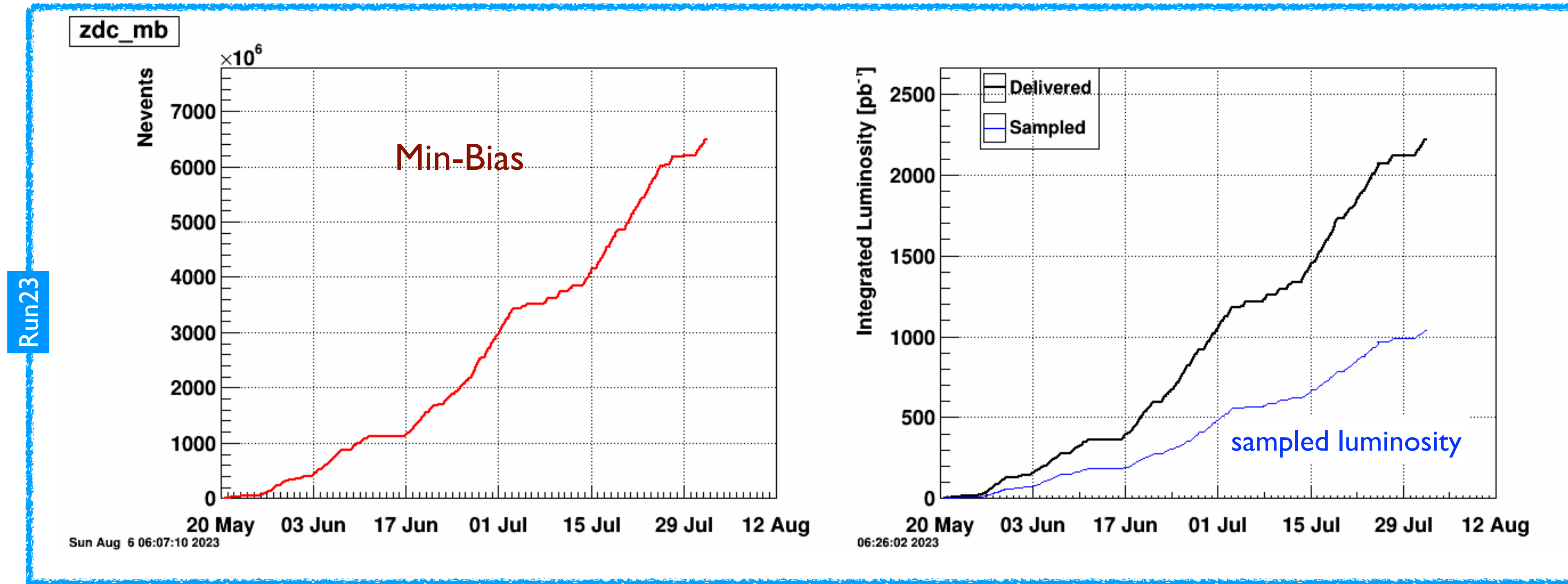
JP2-effective



events\_perday.txt



# Au+Au in Run24



- Planning to focus on Min-Bias data
  - 6.5B Min-bias collected from Run23 (Goal 18B)
  - expect to collect ~2B from 2 weeks of physics running
- Same beam condition as Run23 Min-Bias running
  - crossing angle of 1mrad
  - luminosity leveling at ZDC~13k

$\sqrt{s_{NN}}$ (GeV)	Species	Number Events/ Sampled Luminosity	Year
200	<i>p+p</i>	142 pb <sup>-1</sup> /12w	2024
200	<i>p+Au</i>	0.69 pb <sup>-1</sup> /10.5w	2024
200	Au+Au	18B / 32.7 nb <sup>-1</sup> /40w	2023+2025

Beam Use Request