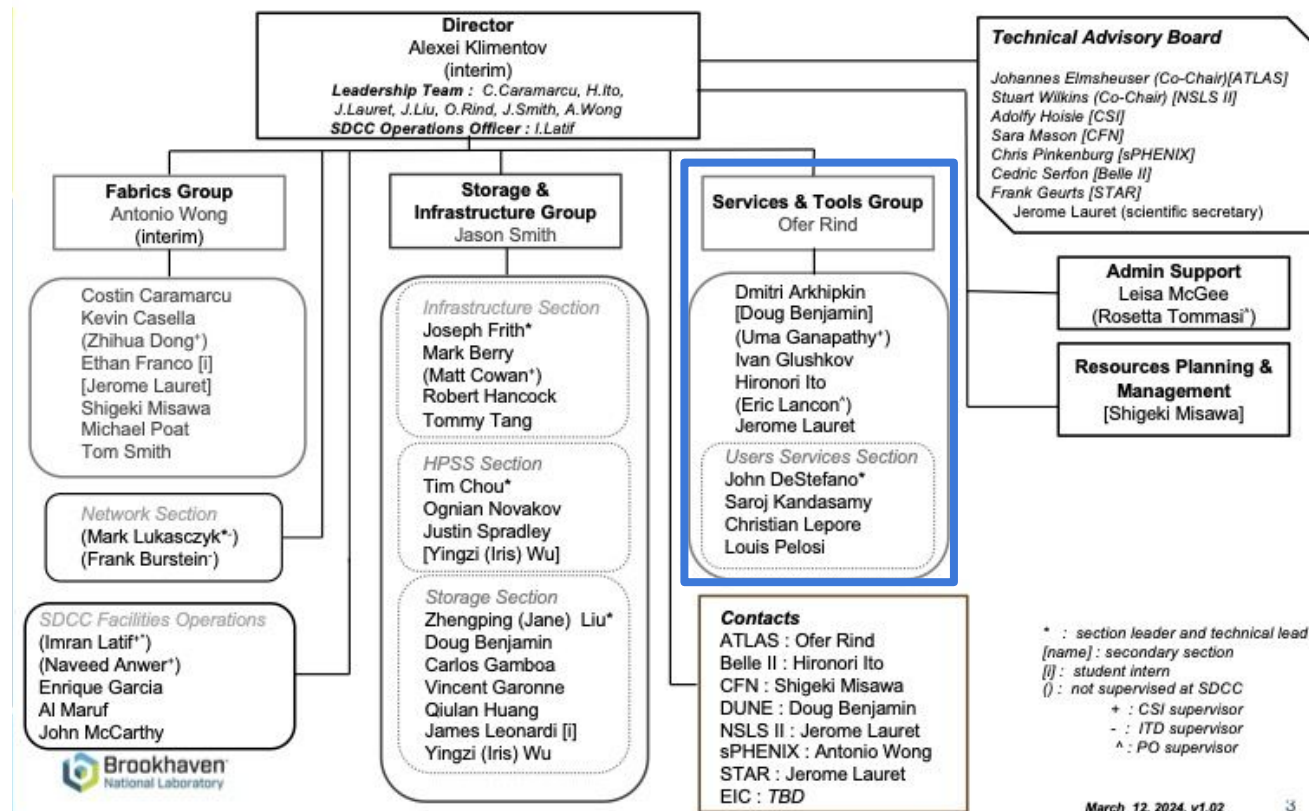


Services & Tools Group

- The Services & Tools Group deploys and supports many of the “user-facing” services and interfaces at the SDCC, from web services, to middleware, to account interfaces, and more
 - This often involves working closely not just with experiment liaisons but individual researchers
- Other experiment workflow specific services, such as CVMFS and Frontier caching, are also supported
- In the wake of the recent SDCC re-org, this group’s responsibilities are still evolving somewhat, to align with facility priorities

Services & Tools Group

- Ofer Rind - GL
- User Services section
 - John De Stefano * - Technical Lead
 - Saroj Kandasamy
 - Christian Lepore
 - Louis Pelosi
- General Services and Tools
 - Dmitry Arkhipkin
 - Doug Benjamin - primarily S&I Group
 - Uma Ganapathy - CSI
 - Ivan Glushkov
 - Hironori Ito
 - Eric Lancon
 - Jerome Lauret



Services & Tools Group

- Responsibilities:
 - WBS 2.3.1 (Tier-1)
 - BNL Tier-1 ADC Contact
 - Frontier Squid
 - BNL FTS
 - CVMFS local Stratum Zero, OSG & WLCG Stratum One
 - User Accounts, VOMS, Keycloak, CoManage support
 - NoMachine/NX Interactive Login Portal
 - Websites - US ATLAS, SDCC (Drupal)
 - Federated Access (Keycloak)
 - WBS 2.3.3, WBS 2.4.2 (HPC Ops, Workflow Porting)
 - US ATLAS HPC operations/development
 - WBS 2.3.4 (Analysis Facilities Operation)
 - US ATLAS Tier-3/Analysis Facility (Jupyterhub)
 - WBS 2.3.5.1 (ADC Ops)
 - US ATLAS Cloud Operations support and ADC Liaison
 - Network throughput testing on US Cloud
 - WBS 3
 - LAr database support

Services & Tools Group

- Responsibilities:
 - Belle-II
 - Rucio/FTS & DIRAC workflow support
 - Conditions DBs
 - Nuclear Physics Projects
 - STAR & sPHENIX DBs (DAQ, conditions, calibrations, hardware inventories, etc.)
 - STAR, sPHENIX, EIC Collaborative Tools (shift signup, phonebook, etc.)
 - InvenioRDM Document Repository - sPHENIX, EIC
 - DUNE
 - Data management co-lead
 - DUNE-US Level 2 mgr - computing operations
 - US ATLAS Discourse Server, Mattermost, Jira, RT
 - BNL Box Sync & Share

Services & Tools Group

- Current Activities:
 - Belle-II Run 2
 - Support for Belle-II analysis on Jupyterhub
 - Preparations for sPHENIX and STAR runs
 - DUNE data management
 - Working with other groups on ATLAS Alma9 validation and IPv6 worker nodes
 - NX update to RHEL 8
 - Mattermost DB migration
 - Reviewing US ATLAS CoManage/Drupal account creation process
 - BNL Box VM migration
 - EIC InvenioRDM deployment
 - Deploying a new internal documentation service
 - ATLAS VO support, VOMS->IAM transition testing & support
 - LAr Production/Phase 2 database to be developed for US deliverables