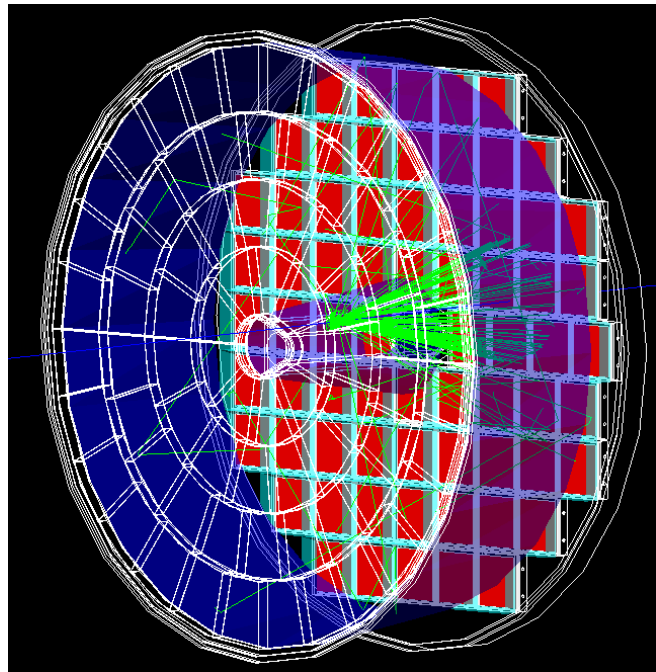


AK's list of TODO (/ to contribute) items

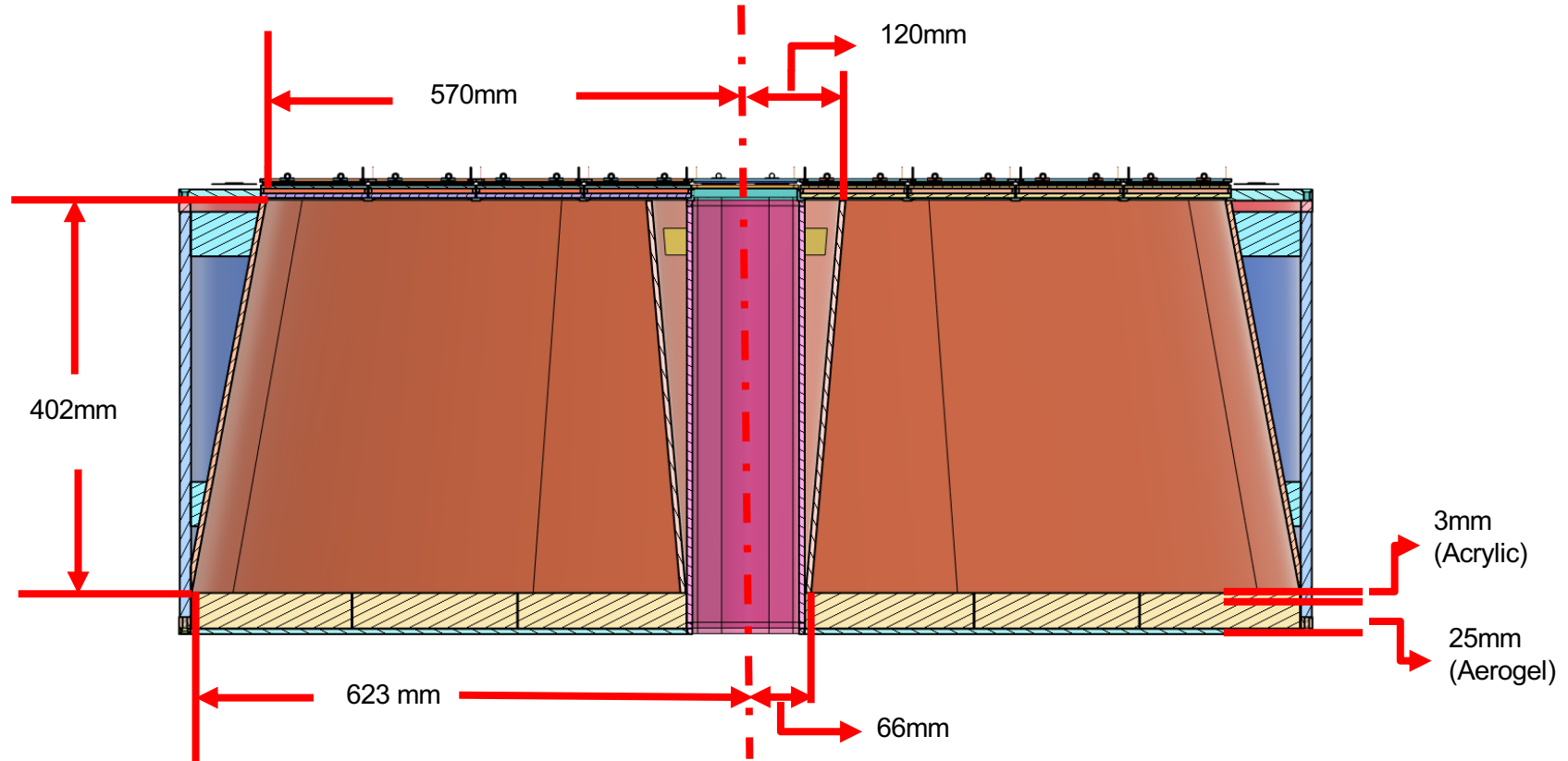
- Aerogel segmentation / compartmentalization
 - **Done:** four bands with tiles <143mm size (6 shapes; 43 -> 74 tiles total); 0.5mm clearance gaps
- Vessel size, mirror slopes & other minor overall geometry updates
 - **Done** (yet there is a ~10mm mismatch on the sensor plate)
- HRPPD location on the sensor plate
 - **Done:** 1.5mm -> 3.0mm installation gaps (TBC with Alex)
- HRPPD QE curve update
 - **Pending (trivial)**
- 1.7T B-field map import, vtx smearing & other trivial stuff
 - **Done**
- Track resolution accounting
 - **Pending (requires work)**
- ToF code clean up
 - **Pending (requires work)**

lut-may-2024 branch



Vessel dimensions (CAD)

Slide by Alex Eslinger



Vessel dimensions (CAD)

Slide by Alex Eslinger

