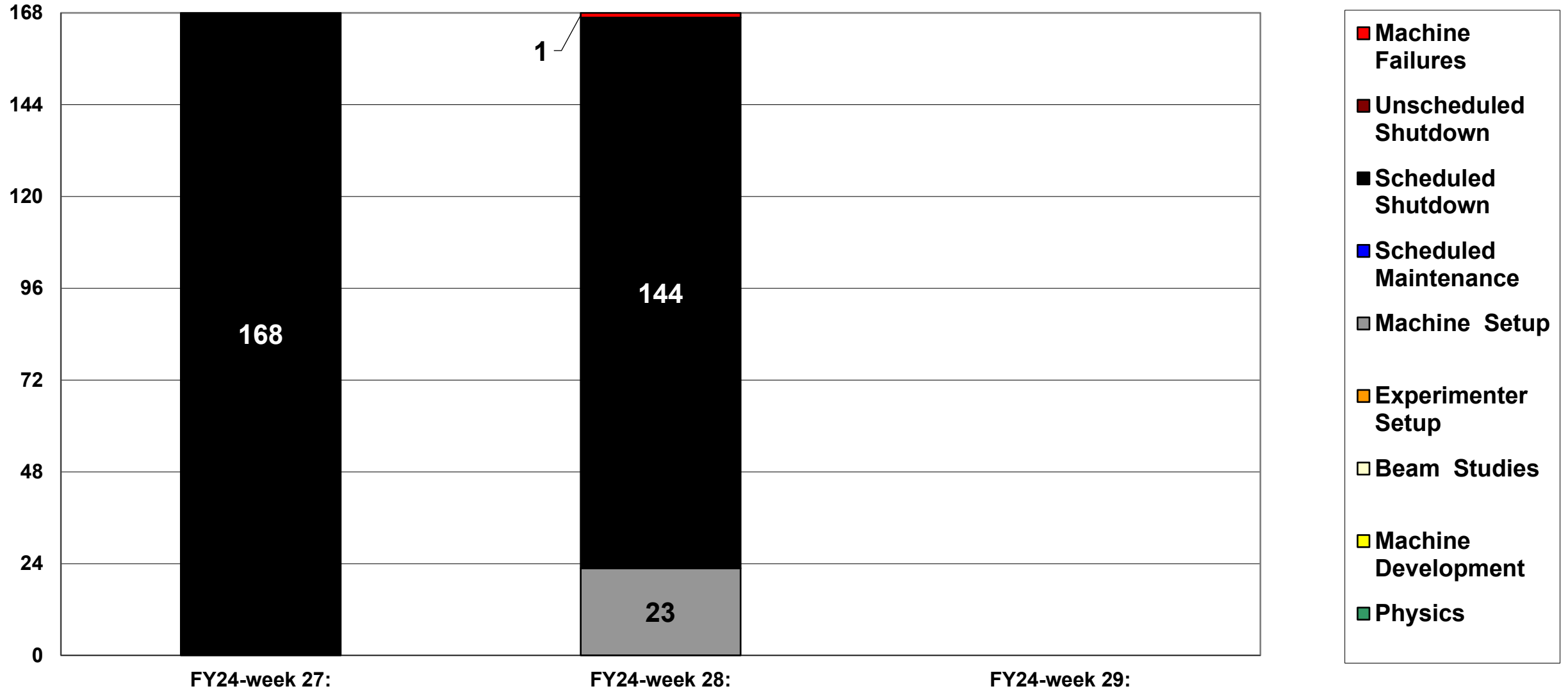
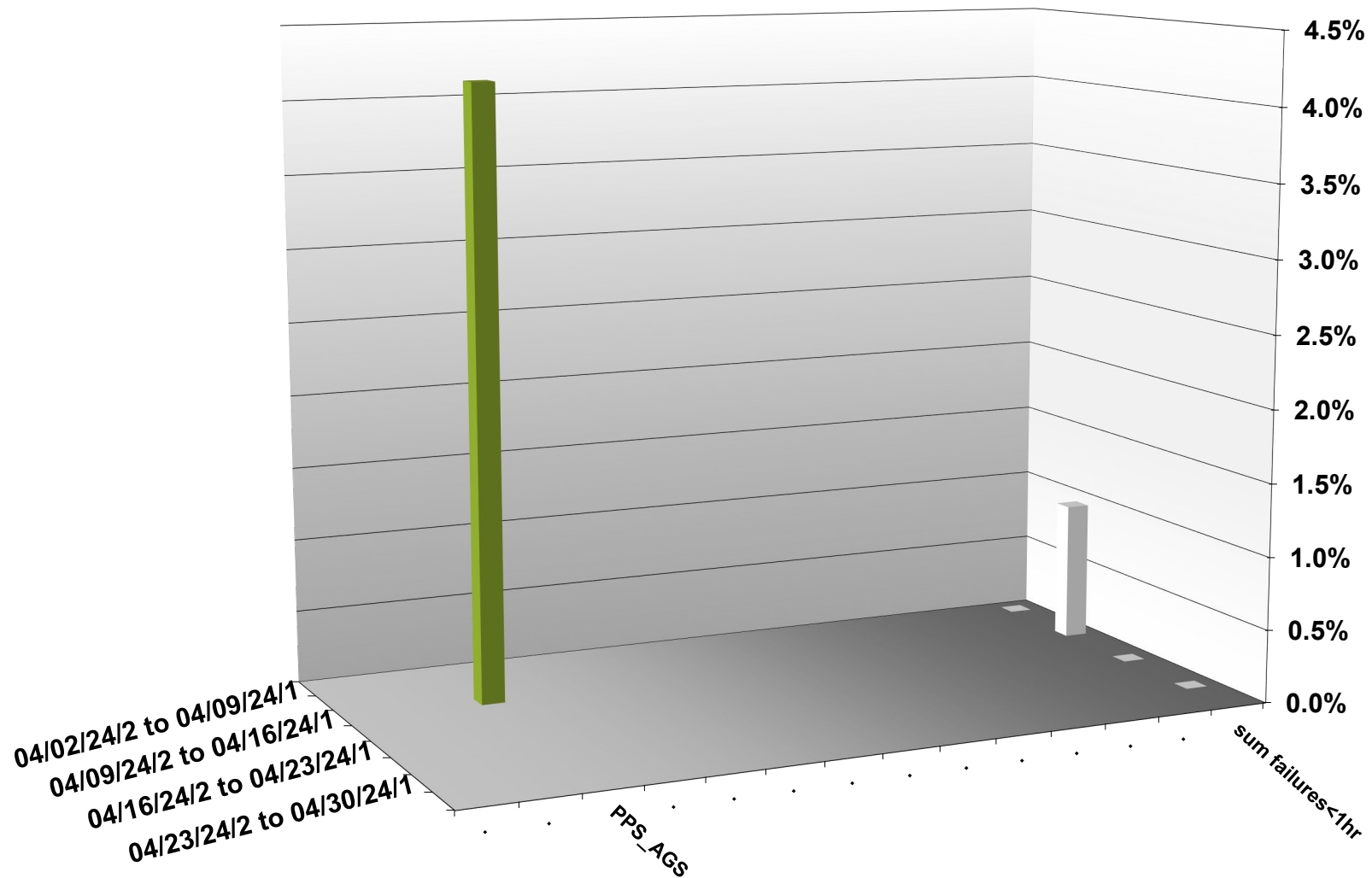


C-AD ACTIVITY April 2024



INTEGRATED FAILURES (GREATER THAN ONE HOUR) BY SYSTEM -- April 2024



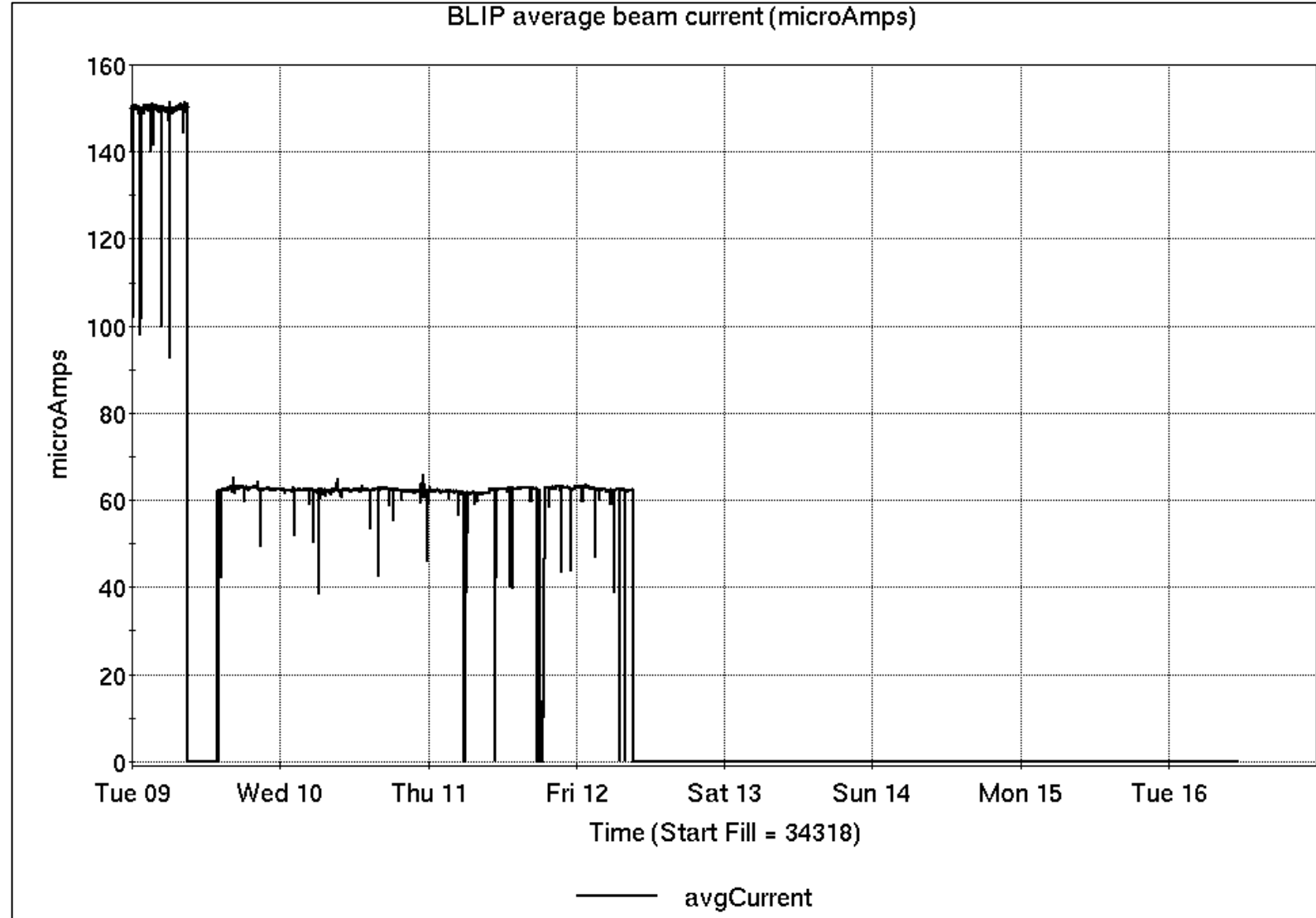
Operations for BLIP

4/9-16/2024:

BLIP 200 MeV production concluded, followed with 117 MeV run ending Friday.

- 66.63 hr Production
- 0.58 hr setup
- 1.47 hr Failures

Availability: 97.9%



NSRL activity past week: 4/9-16/2024 (as of 0800)

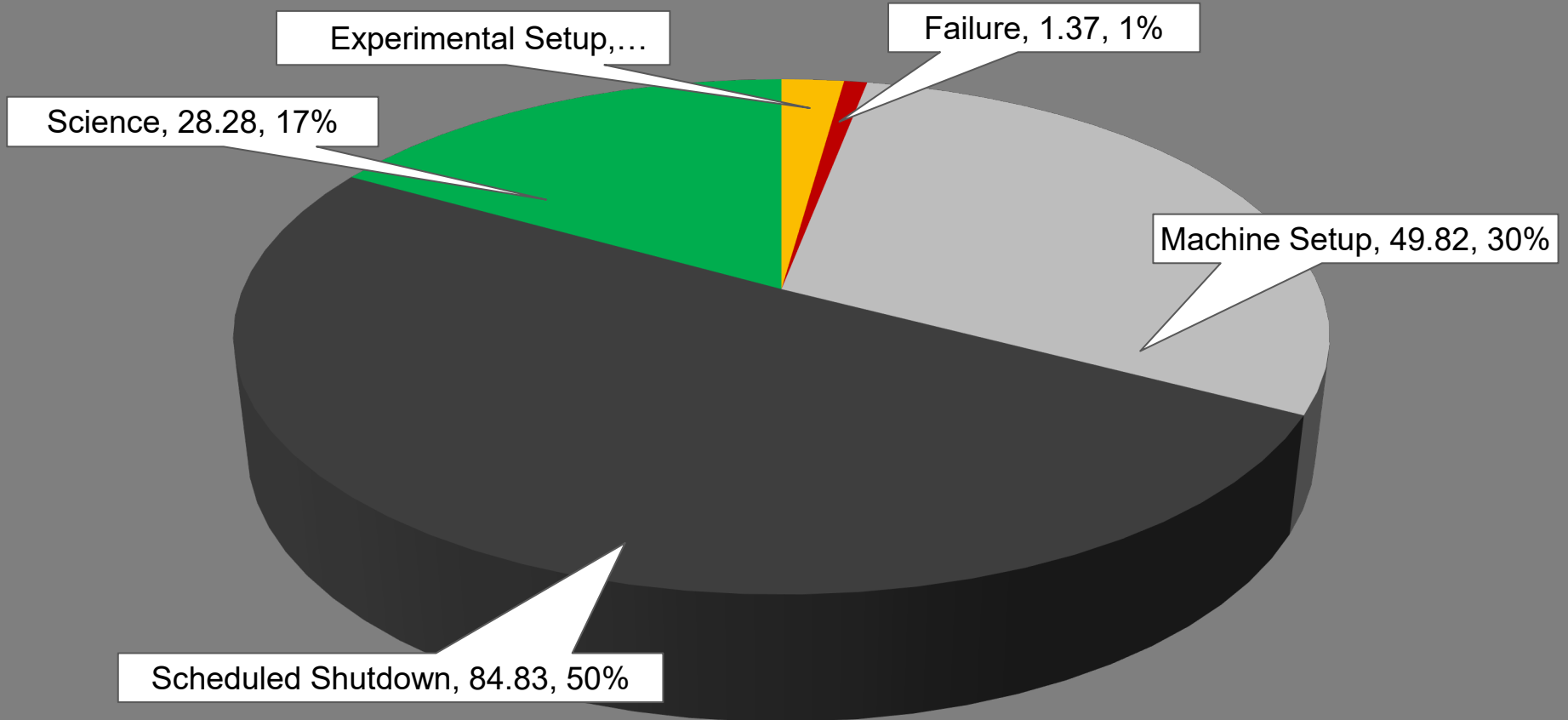
NSRL: User setup and running past week; Following, setup for this week's NASA biology

Protons, 11 EBIS ions in use. (He, C, O, Si, Ti, Fe, Nb, Ag, Tb, Ta, Bi)

Run 24-A/B schedule updates continue; running 8 Jan - 21 May.

Run 24-C schedule posted; beam into November

NSRL Hours



Availability: **98.4%**

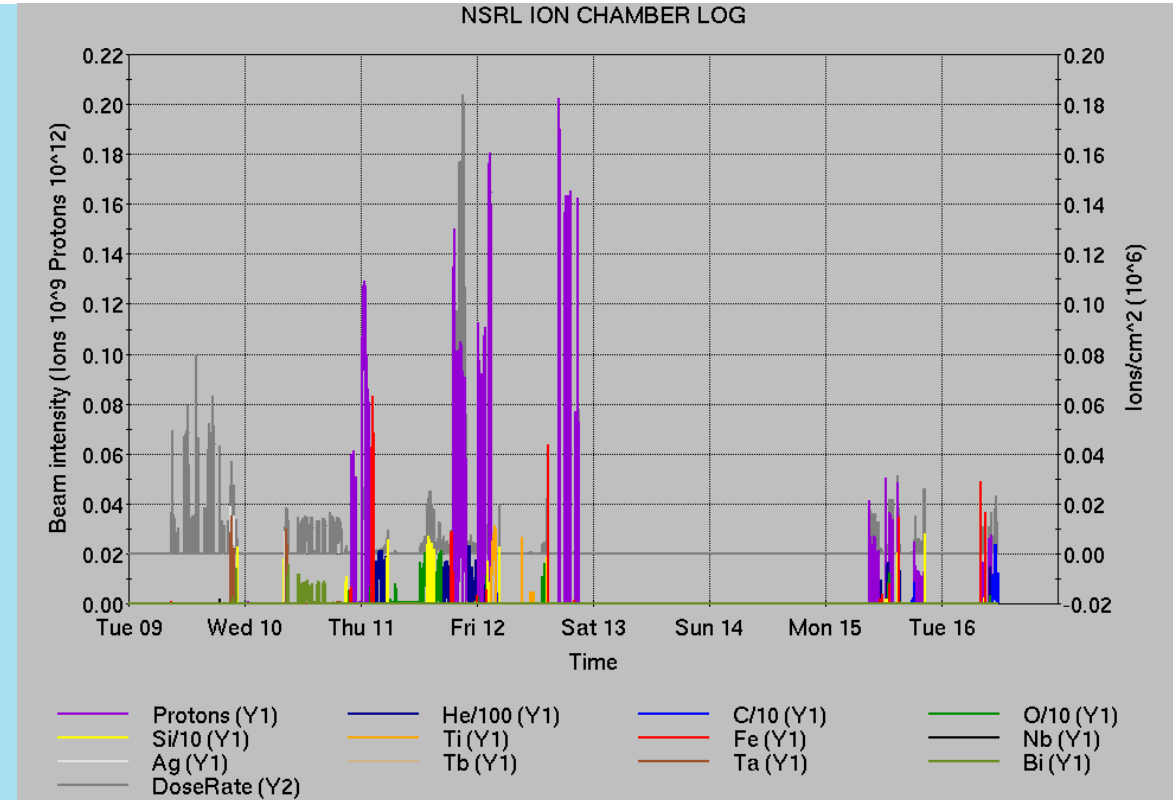
Notes from Operations

Notable failures (>1 hr)

- Power dip, affecting Linac, EBIS, AGS cold snake, and various other systems.
- AGS g09 extraction BLW failure
- Linac Mod 9 mispulsing, signal noise; retuned
- HEBT corrector PS trip, water fault (no alarm).
- AGS j5 tune jump PS failure, repair
- AGS multipole room cooling failure, pumps reset

Other notes

- Setup paused for OPPIS work
- RHIC injection kickers/scopes not ready
- Various AGS RF low-level tuning
- Various Linac, EBIS, other PS trips/resets



	Linac	Tandem	EBIS	Booster	AGS	ATR	RHIC	ERL	Other	Total
Total	4 (2)	43 (45)	1 (5)	12 (6)	21 (9)	23 (13)	1542 (535)	0 (0)	16 (34)	1662 (649)
RF	1 (0)	0 (0)	0 (0)	0 (0)	0 (1)	0 (0)	6 (4)	0 (0)	3 (6)	10 (11)
PS	1 (0)	43 (16)	1 (5)	0 (0)	6 (2)	14 (0)	1512 (514)	0 (0)	0 (1)	1577 (538)
Vacuum	0 (2)	0 (29)	0 (0)	9 (6)	10 (0)	0 (10)	4 (9)	0 (0)	2 (14)	25 (70)
Inst	0 (0)	0 (0)	0 (0)	0 (0)	1 (1)	8 (0)	8 (2)	0 (0)	8 (5)	25 (8)
Other	2 (0)	0 (0)	0 (0)	3 (0)	4 (5)	1 (3)	12 (6)	0 (0)	3 (8)	25 (22)

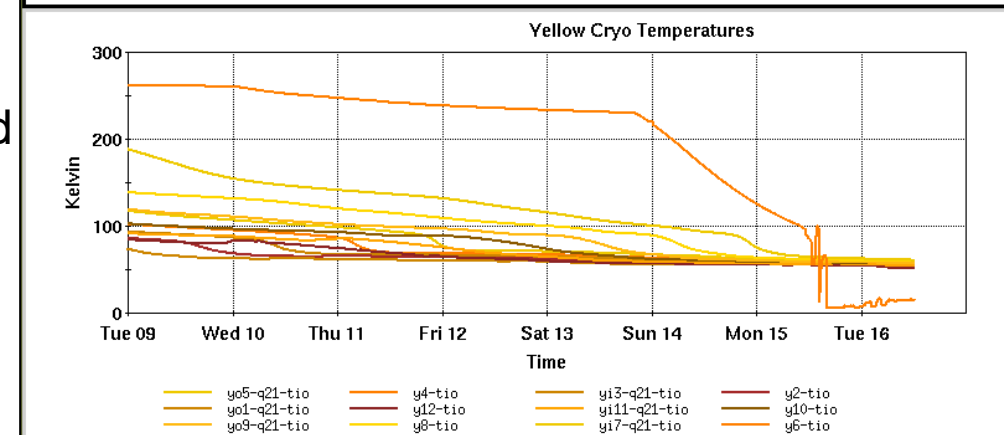
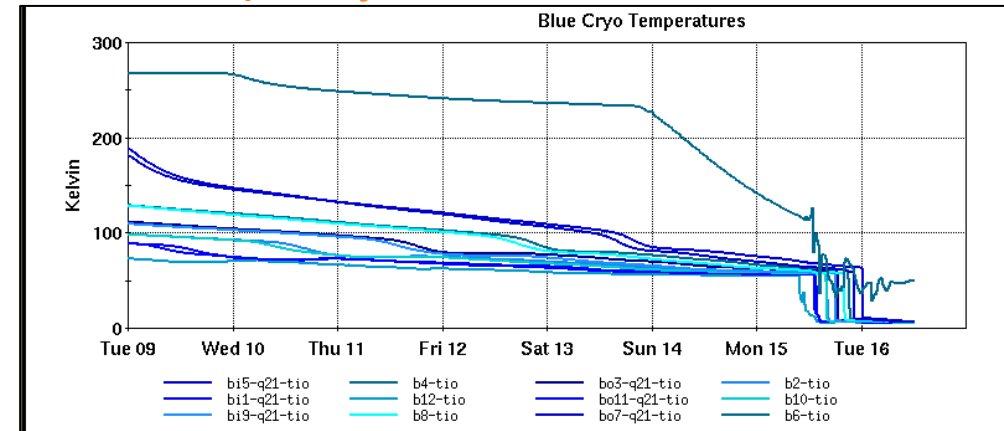
2,311 things to do today

Reminder from Operations

- MCR continues Operations for:
 - BLIP - resuming 22 April.
 - NSRL user running continues Mon-Sat, NASA Biology this week.
 - AGS/Booster polarized proton setup continues, over 100 additional hours this week.
 - Polarization scans in progress, evaluating OPPIS polarization
 - Setting up multiple (proton) AGS PPM Users. Injector **Au setup as yet untested.**
 - Skew quad **testing continues.**
 - Preparation for RHIC beam.
 - Protons established to W-dump.

- **Remember to coordinate with MCR.**
Start-up is here!

- CHECK AND EDIT YOUR OWN CONTACT INFO
 - <http://directory.pbn.bnl.gov/>
- CHECK YOUR CALLIN LIST: **WCC** and **ECP** updates needed
 - https://www.cadops.bnl.gov/Operations/personnel/call_in_lists/



Availability: RHIC Run-24

