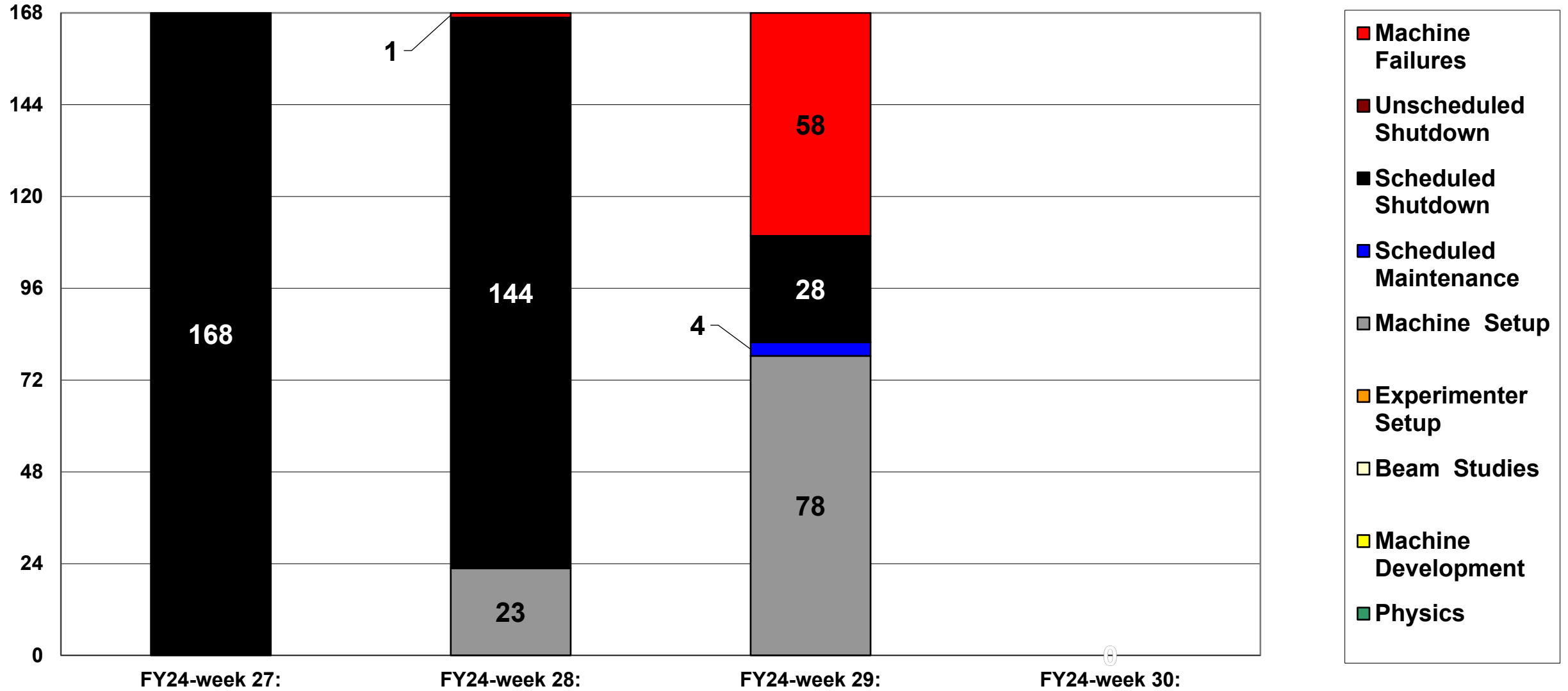
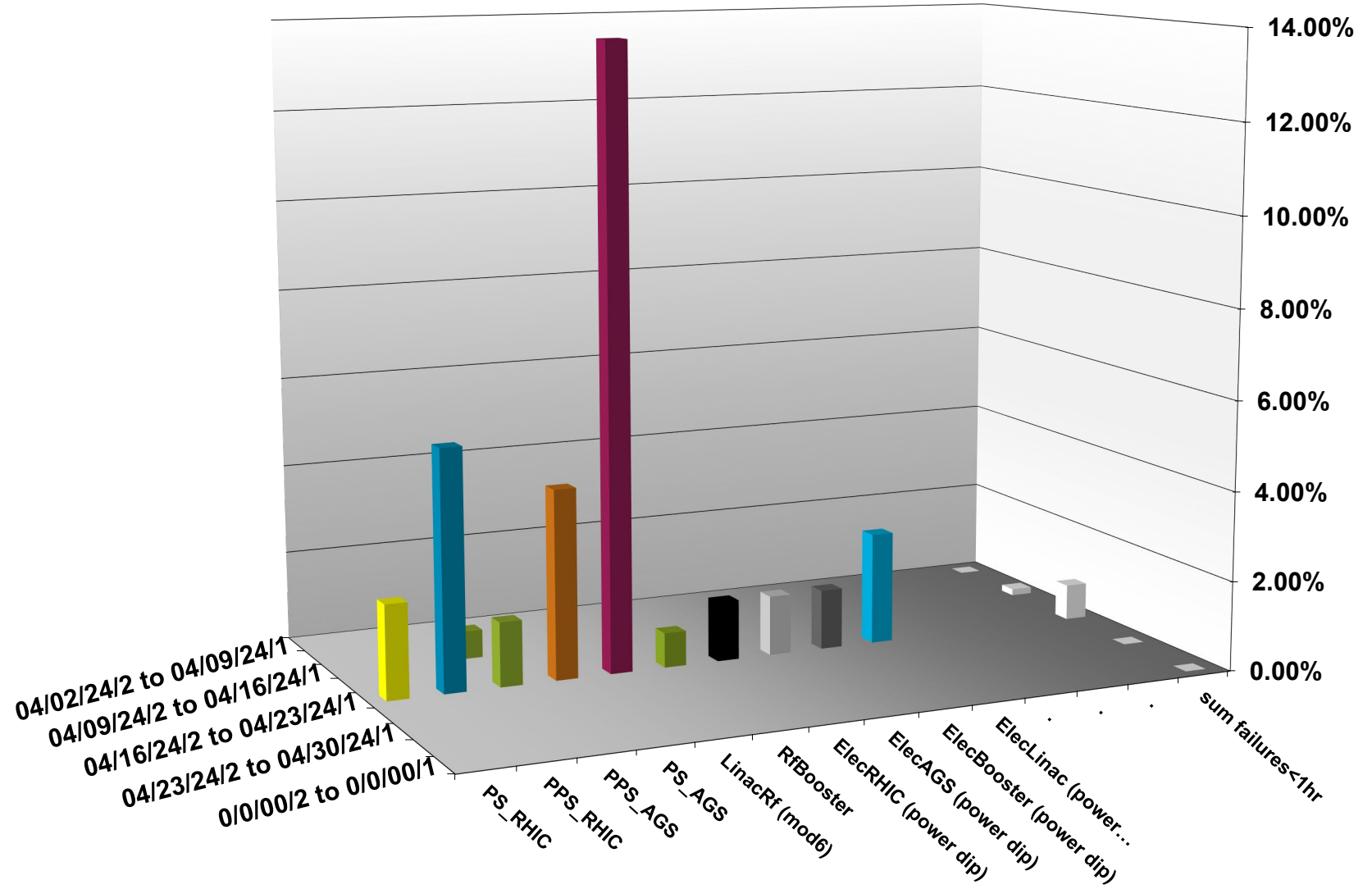


C-AD ACTIVITY April 2024



INTEGRATED FAILURES (GREATER THAN ONE HOUR) BY SYSTEM -- April 2024



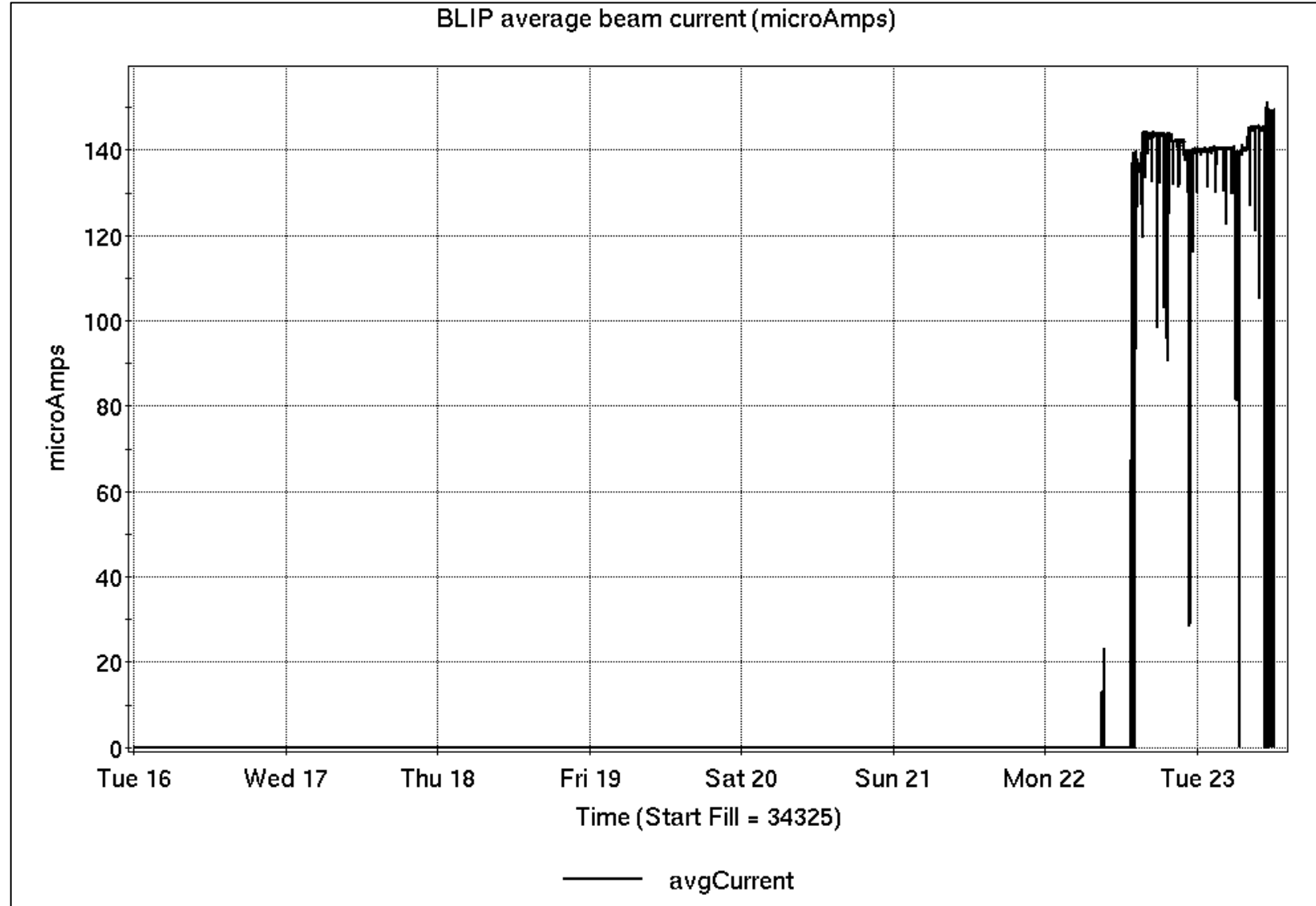
Operations for BLIP

4/16-23/2024:

BLIP 200 MeV production began Monday, although later than scheduled.

- 17.83 hr Production
- 0.59 hr Setup
- No Failures

Availability: 100%
(with degraded performance)



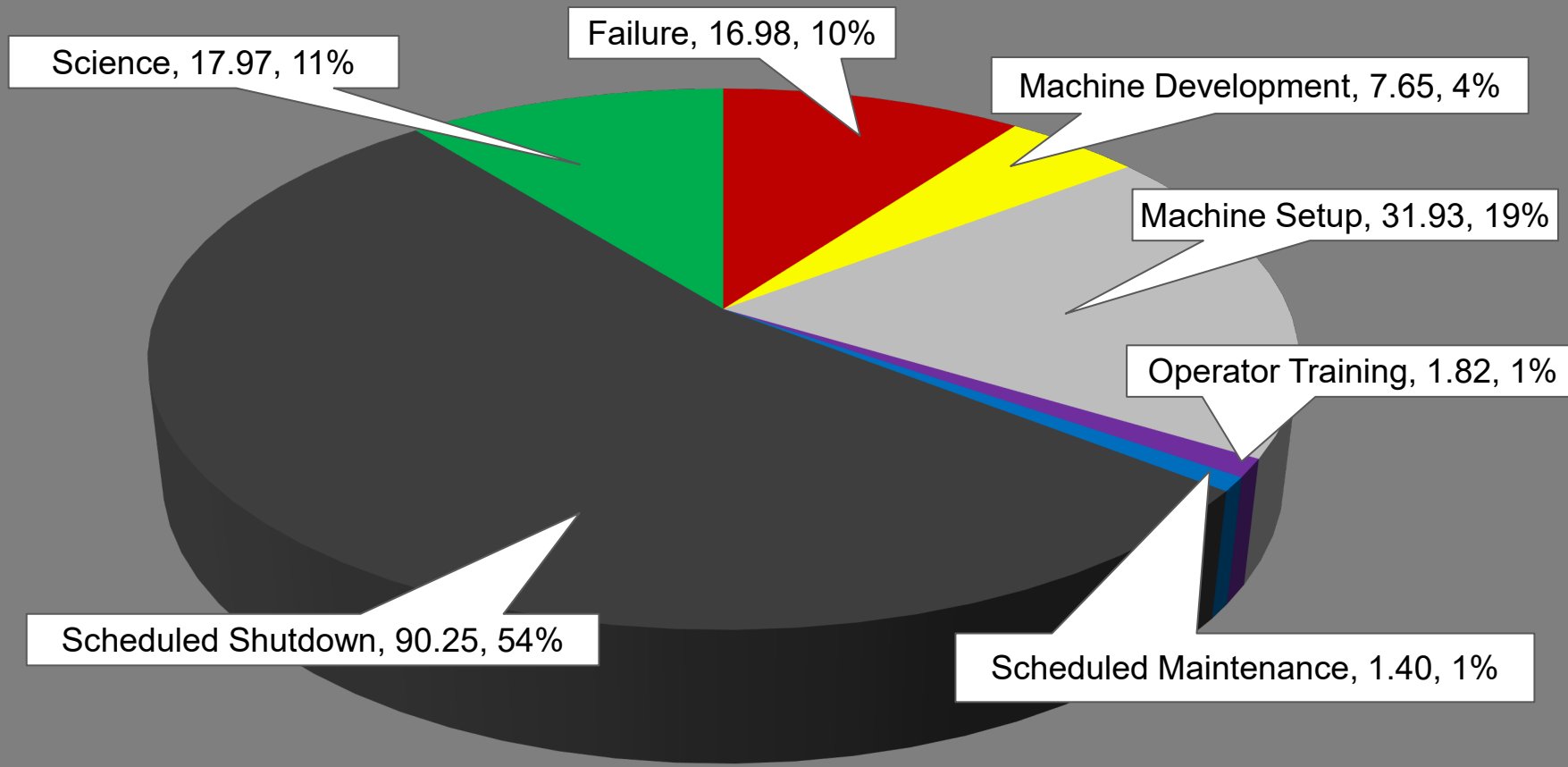
NSRL activity past week: 4/16-23/2024 (as of 0800)

NSRL: NASA biology continues, as primary user in GCR mode; delays with proton availability required make up days for some users.

Protons, 6 EBIS ions in use. (He, C, Ne, O, Si, Fe)

Run 24-A/B schedule updates continue; running 8 Jan - 21 May.
Run 24-C follows 22 May.
Schedule posted, details forthcoming; beam into November.

NSRL Hours



Availability: **77.8%**

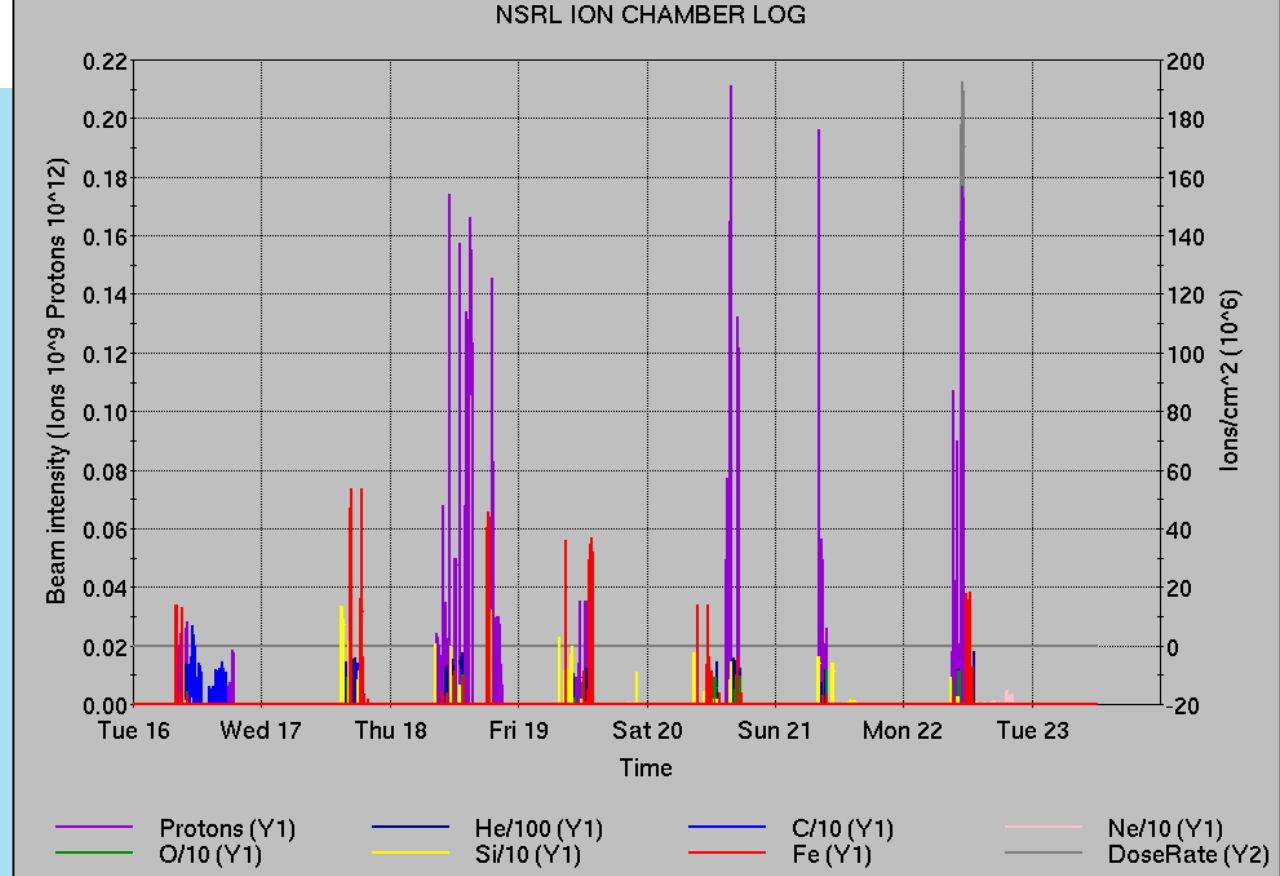
Notes from Operations

Notable failures (>1 hr)

- Significant power dip across the C-AD complex; Recovery extended across and beyond scheduled Maintenance period. snake, and various other systems.
- Polarized beam unavailable from OPPIS (reconditioning now complete).
- Linac Mod 6 failure; reduced performance, NSRL delays.
- Blue injection kicker failure, ongoing.

Other notes

- Access as required for PS, Cryo, RF, Vacuum, CeC, Experiments
- Setup halted for lack of available systems (3x)
- Various other trips, resets



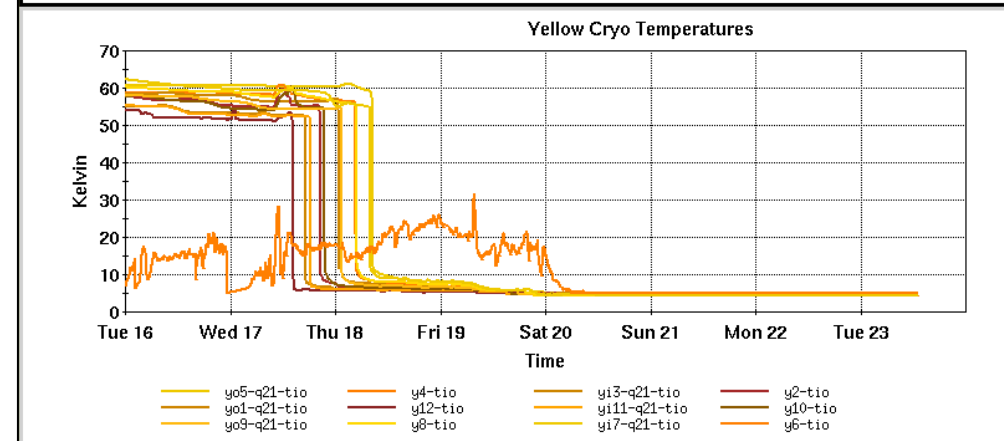
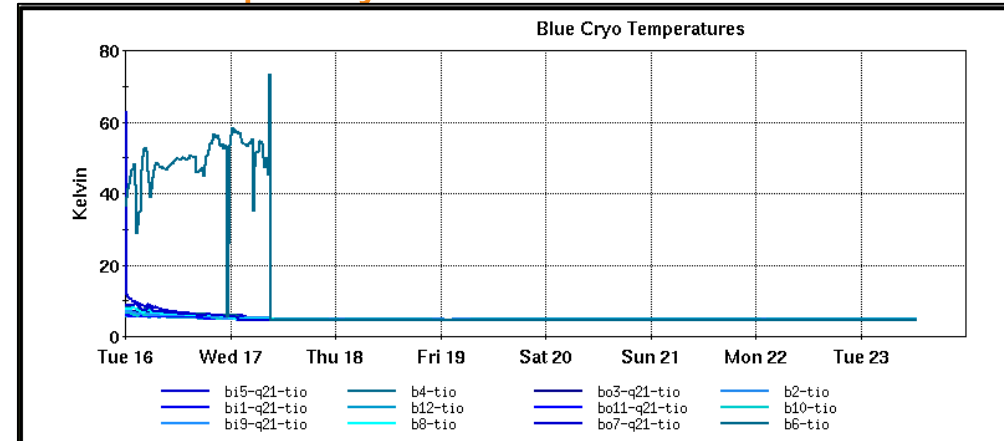
	Linac	Tandem	EBIS	Booster	AGS	ATR	RHIC	ERL	Other	Total
Total	14 (0)	171 (36)	1 (4)	14 (7)	10 (9)	18 (0)	77 (6)	0 (0)	33 (27)	338 (89)
RF	7 (0)	0 (0)	0 (0)	1 (0)	1 (0)	0 (0)	7 (0)	0 (0)	21 (6)	37 (6)
PS	2 (0)	162 (16)	1 (4)	0 (0)	5 (2)	16 (0)	41 (3)	0 (0)	0 (1)	227 (26)
Vacuum	4 (0)	7 (20)	0 (0)	8 (7)	0 (0)	0 (0)	3 (2)	0 (0)	2 (13)	24 (42)
Inst	0 (0)	2 (0)	0 (0)	1 (0)	0 (2)	0 (0)	9 (1)	0 (0)	4 (3)	16 (6)
Other	1 (0)	0 (0)	0 (0)	4 (0)	4 (5)	2 (0)	17 (0)	0 (0)	6 (4)	34 (9)

	Linac	Tandem	EBIS	Booster	AGS	ATR	RHIC	ERL	Other	Total
Total	4 (2)	43 (45)	1 (5)	12 (6)	21 (9)	23 (13)	1542 (525)	0 (0)	16 (34)	16 (44)
RF	1 (0)	0 (0)	0 (0)	0 (0)	0 (0)	6 (4)	0 (0)	0 (0)	3 (0)	3 (3)
PS	1 (0)	43 (14)	1 (5)	0 (0)	6 (2)	14 (9)	1512 (514)	0 (0)	0 (1)	1577 (530)
Vacuum	0 (2)	0 (29)	0 (0)	9 (6)	10 (10)	0 (0)	4 (0)	0 (0)	2 (14)	25 (10)
Inst	0 (0)	0 (0)	0 (0)	0 (0)	1 (3)	8 (2)	8 (0)	0 (0)	9 (1)	25 (0)
Other	2 (0)	0 (0)	0 (0)	3 (5)	4 (3)	1 (0)	12 (6)	0 (0)	3 (0)	25 (0)

2511 alarms last week; 427 today

Reminder from Operations

- MCR continues Operations for:
 - BLIP – continues through 3 May.
 - NSRL user running scheduled Mon-Fri, NASA Biology this week and next.
 - AGS/Booster polarized proton setup continues, additional to RHIC setup.
 - Polarization scans in progress, evaluating OPPIS polarization
 - Setting up multiple (proton) AGS PPM Users. Injector **Au setup as yet untested.**
 - Skew quad **testing continues.**
 - RHIC beam setup.
 - Protons injected in Blue; Yellow injection pending.
- **Remember to coordinate with MCR.**
We need proper contacts when systems require experts
- CHECK AND EDIT YOUR OWN CONTACT INFO
 - <http://directory.pbn.bnl.gov/>
- CHECK YOUR CALLIN LIST: **WCC** and **ECP** updates needed
 - https://www.cadops.bnl.gov/Operations/personnel/call_in_lists/



Availability: RHIC Run-24

