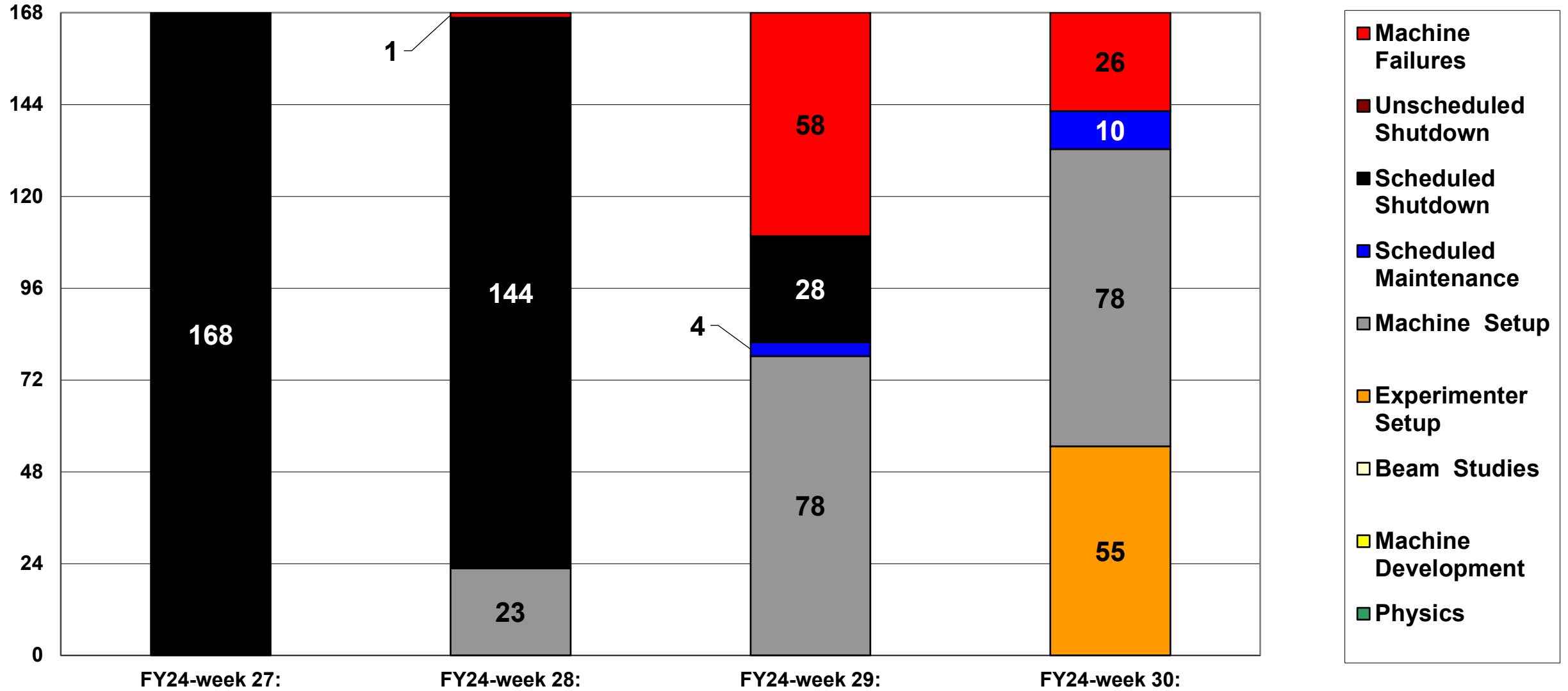
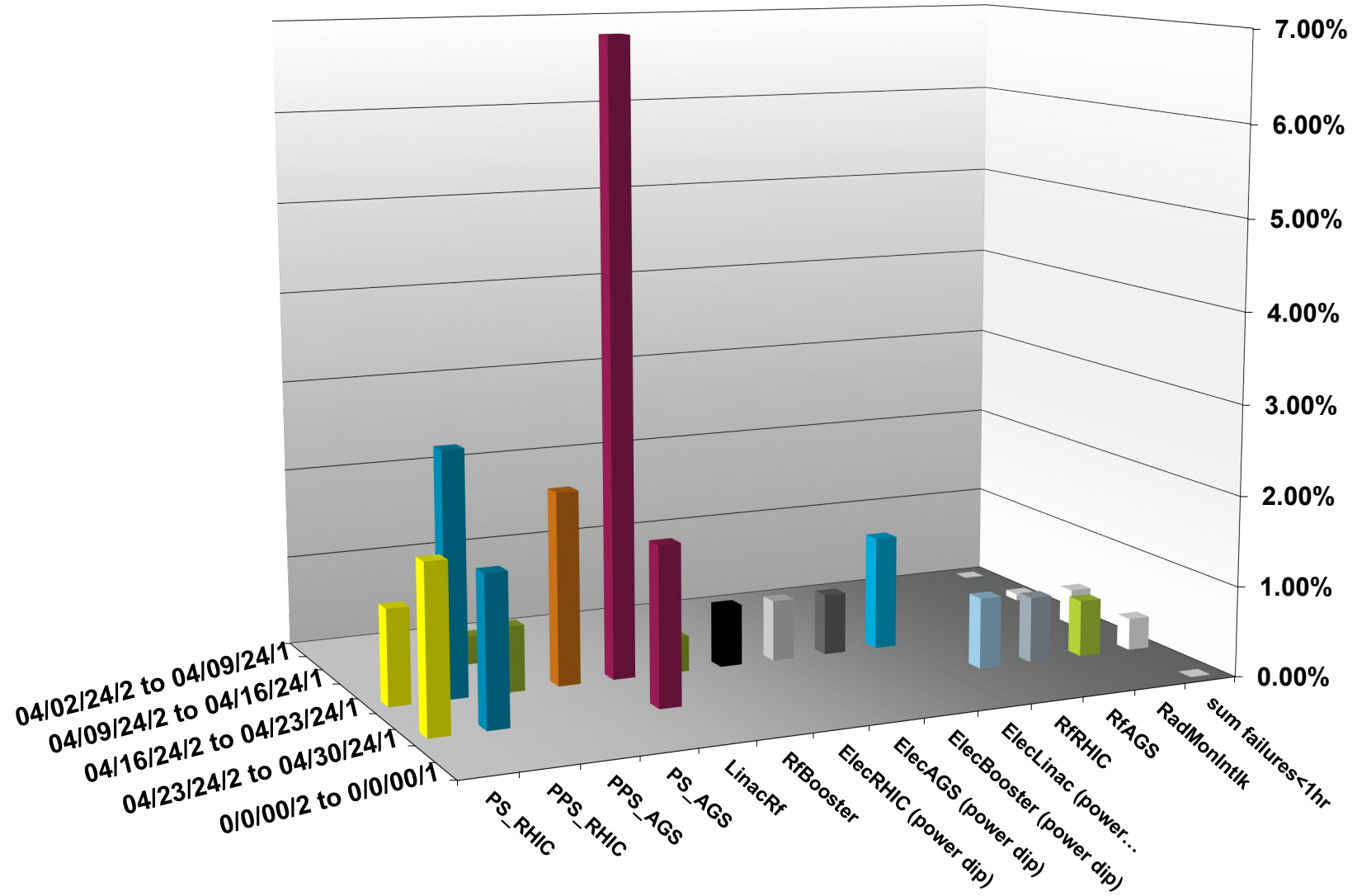


C-AD ACTIVITY April 2024



INTEGRATED FAILURES (GREATER THAN ONE HOUR) BY SYSTEM -- April 2024



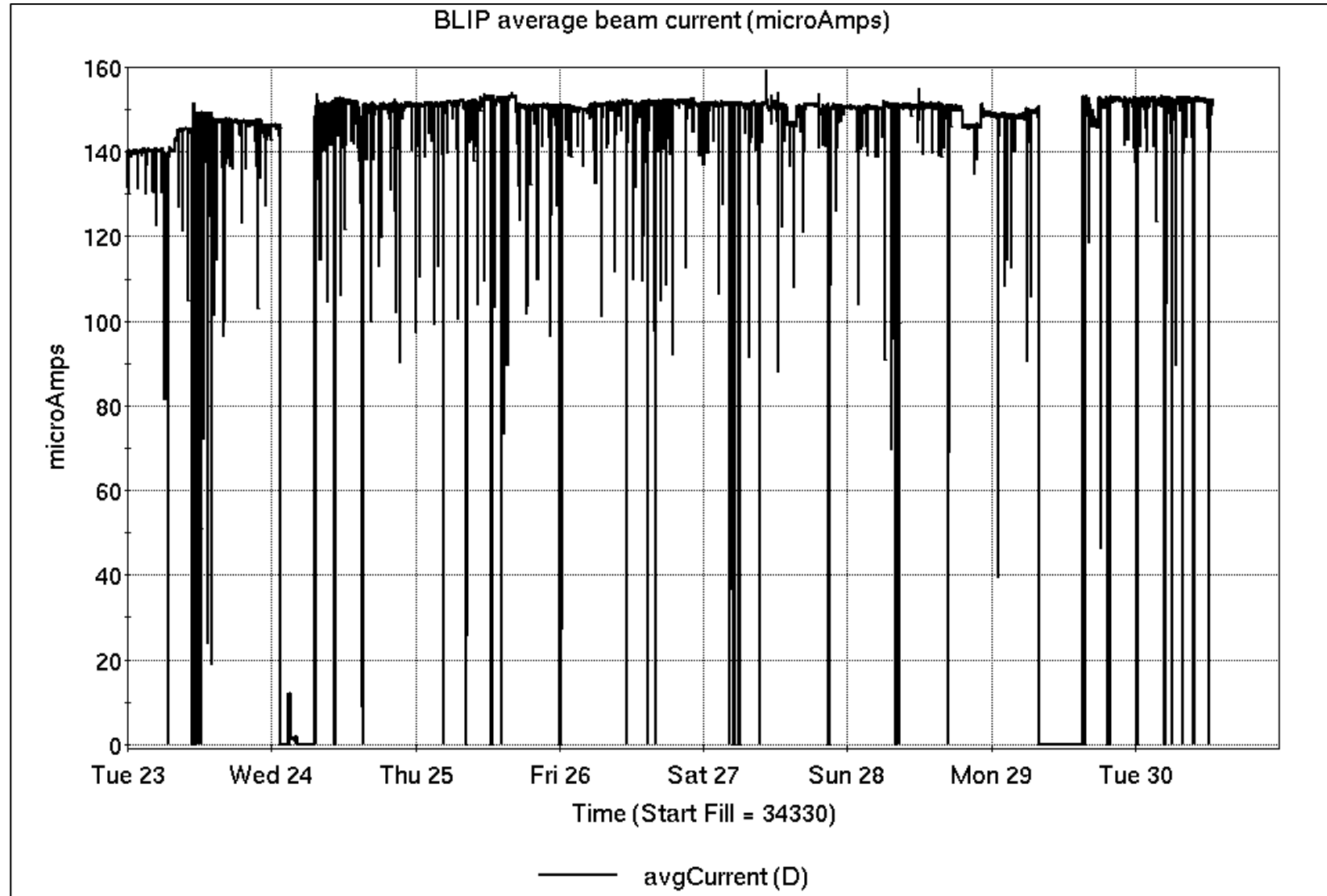
Operations for BLIP

4/23-30/2024:

BLIP 200 MeV target production continued throughout the week (requisite beam current was reestablished).

- 152.07 hr Production
- 0.13 hr Setup
- 8.47 hr Failure
- 7.33 hr Maintenance

Availability: 94.7%



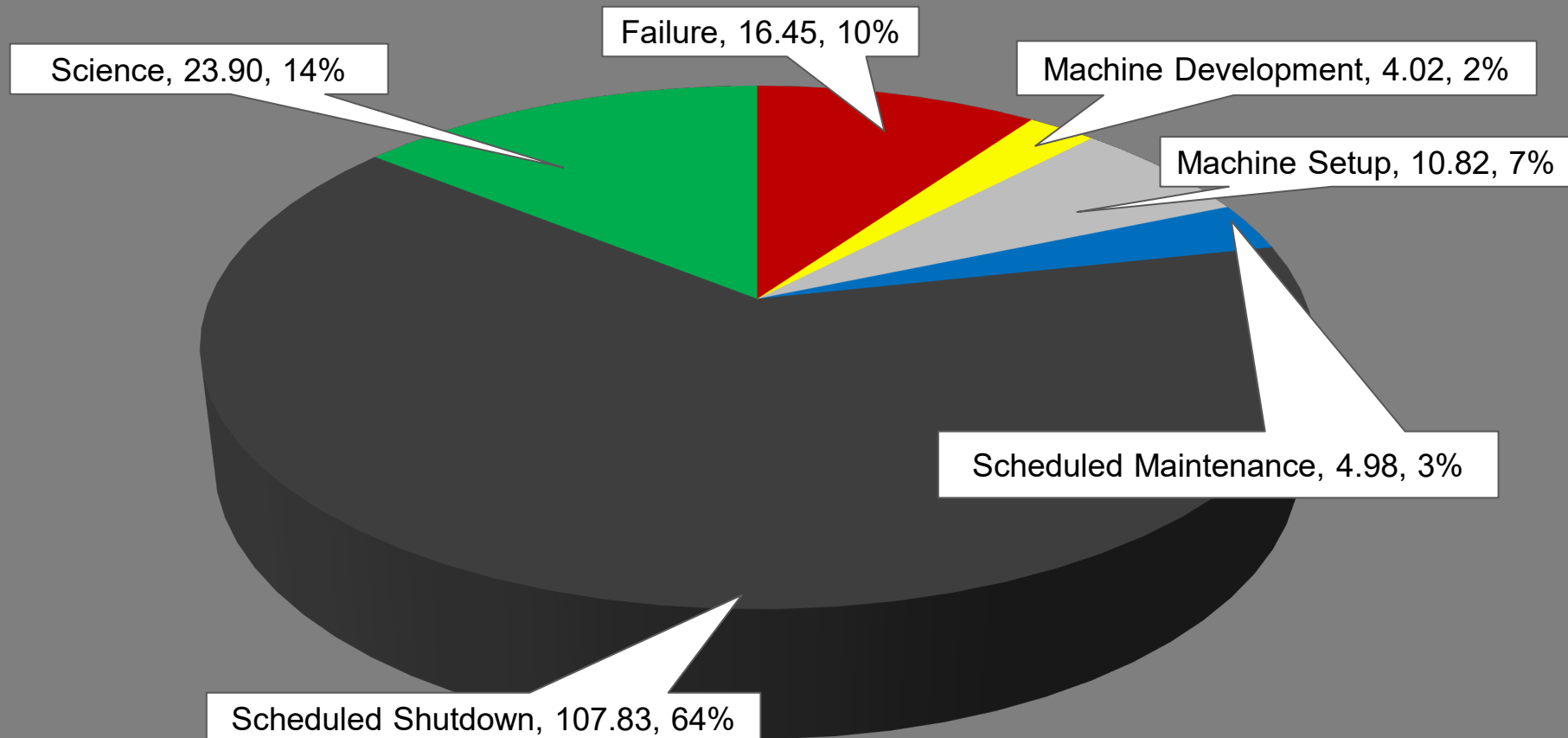
NSRL activity past week: 4/23-30/2024 (as of 0800)

NSRL: NASA biology continues, as primary user in GCR mode; additional users this week.

Protons, 11 EBIS ions in use. (He, C, Ne, O, Si, Fe, Ag, Tb, Ta, Bi, Au)

Run 24-A/B schedule continues until 21 May.
Run 24-C follows 22 May.
Schedule posted, details forthcoming; beam into November.

NSRL Hours



Availability: 70.2%

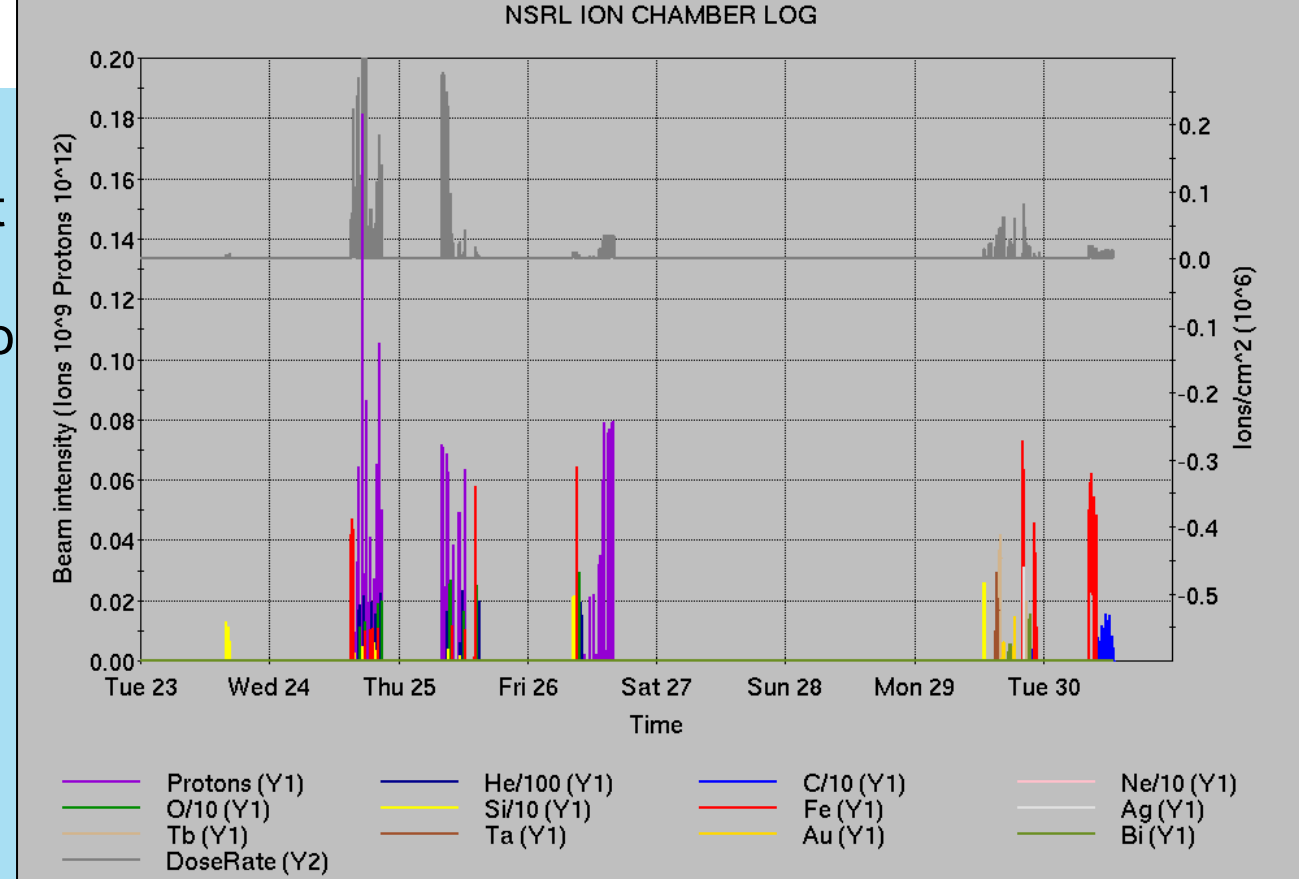
Notes from Operations

Notable failures (>1 hr)

- Linac Mod 6 RF failures (4x). 8618 replacement was major repair.
- Blue injection kicker mispulse failures, repairs to module #3.
- Access for PS, other repairs
- Access for bo11-th6-ps
- Blue QLI
- AGS LLRF bucket hop issues
- Blue bi4-tq5 trip, replaced PS
- R-line PS failure
- Proton intensity issues

Other notes

- Various trips, resets and concurrent work



AlarmDisplay - All Alarm View - Suppression Enabled@schlrjg.pbn.bnl.gov

Setup	Filter	Linac	Tandem	EBIS	Booster	AGS	ATR	RHIC	ERL	Other	Total
Total		14	171	1	14	10	18	77	0	33	338
RF		7	0	0	1	1	0	7	0	21	37
PS		2	162	1	0	5	16	41	0	0	227
Vacuum		4	7	0	8	0	0	3	0	2	24
Inst		0	2	0	1	0	0	9	0	4	16
Other		1	0	0	4	4	2	17	0	6	34

Tue Apr 23 12:16:33 EDT 2024

427 alarms last week; 352 today

	Linac	Tandem	EBIS	Booster	AGS	ATR	RHIC	ERL	Other	Total
Total	4	0	1	15	5	5	35	0	27	92
RF	0	0	0	0	1	0	9	0	21	31
PS	2	0	1	0	3	5	11	0	0	22
Vacuum	2	0	0	9	1	0	5	0	2	19
Inst	0	0	0	0	0	0	6	0	4	10
Other	0	0	0	6	0	0	4	0	0	10

Tue Apr 30 13:15:28 EDT 2024

Reminder from Operations

- MCR continues Operations for:
 - BLIP – continues through 3 May.
 - NSRL user running scheduled Mon-Fri, NASA Biology this week and next.
 - AGS/Booster polarized proton setup continues, additional to RHIC setup.
 - Setting up multiple (proton) AGS PPM Users, polarization scans.
 - Injector **Au setup as yet untested**.
 - Skew quad **testing continues**.
 - RHIC beam setup.
 - Working towards Physics stores.
- ***Remember to coordinate with MCR.***
We need proper contacts when systems require experts
- CHECK AND EDIT YOUR OWN CONTACT INFO
 - <http://directory.pbn.bnl.gov/>
- CHECK YOUR CALLIN LIST: **WCC** and **ECP** updates needed
 - https://www.cadops.bnl.gov/Operations/personnel/call_in_lists/

Availability: RHIC Run-24

