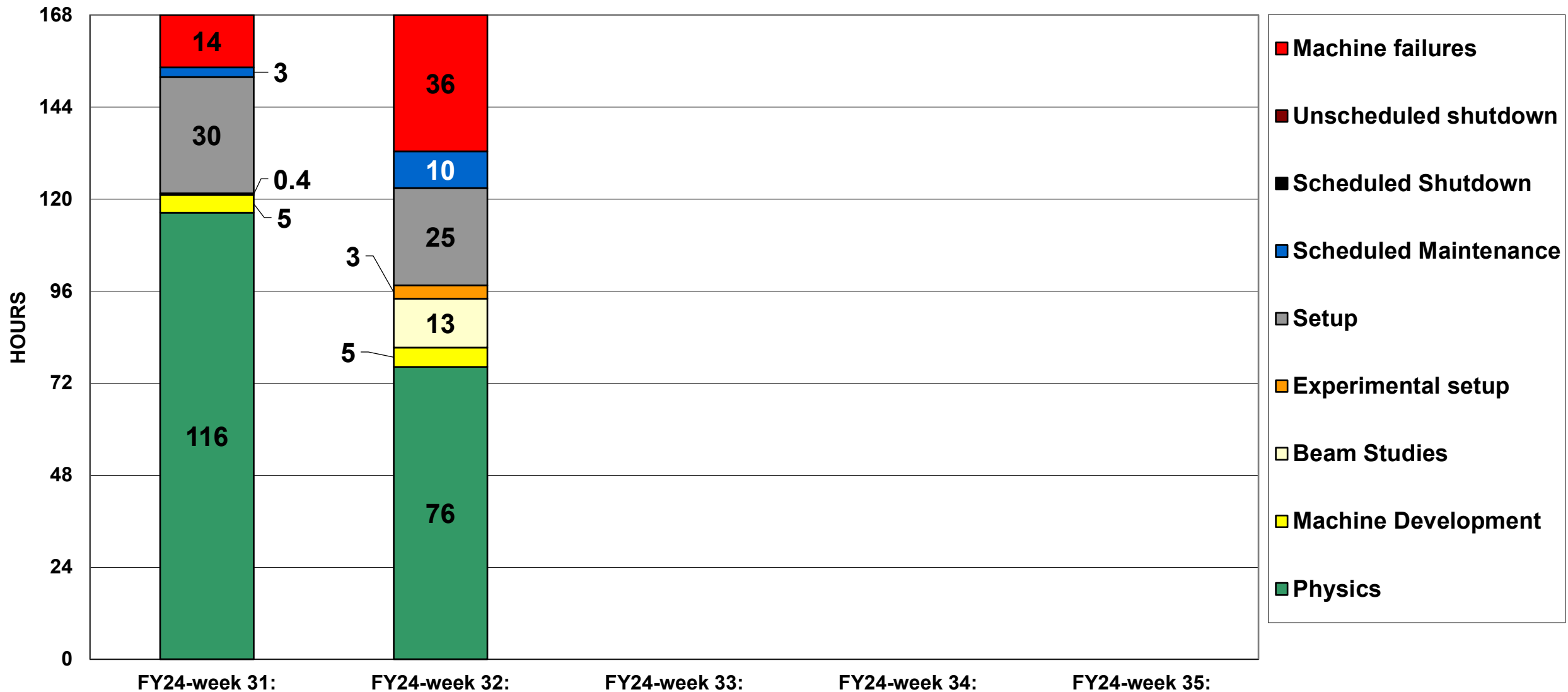
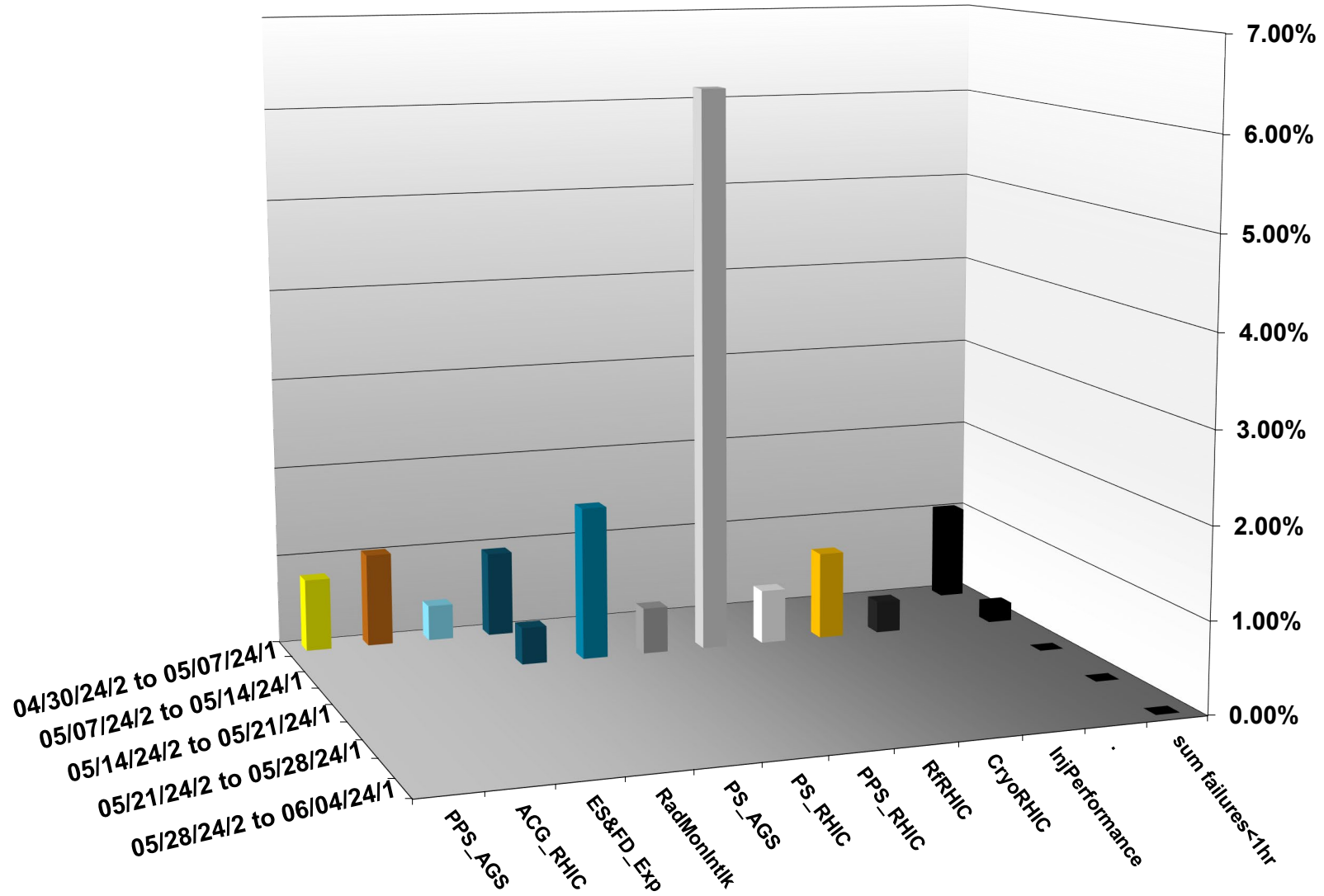


C-AD ACTIVITY MAY 2024



INTEGRATED FAILURES (GREATER THAN ONE HOUR) BY SYSTEM -- MAY 2024



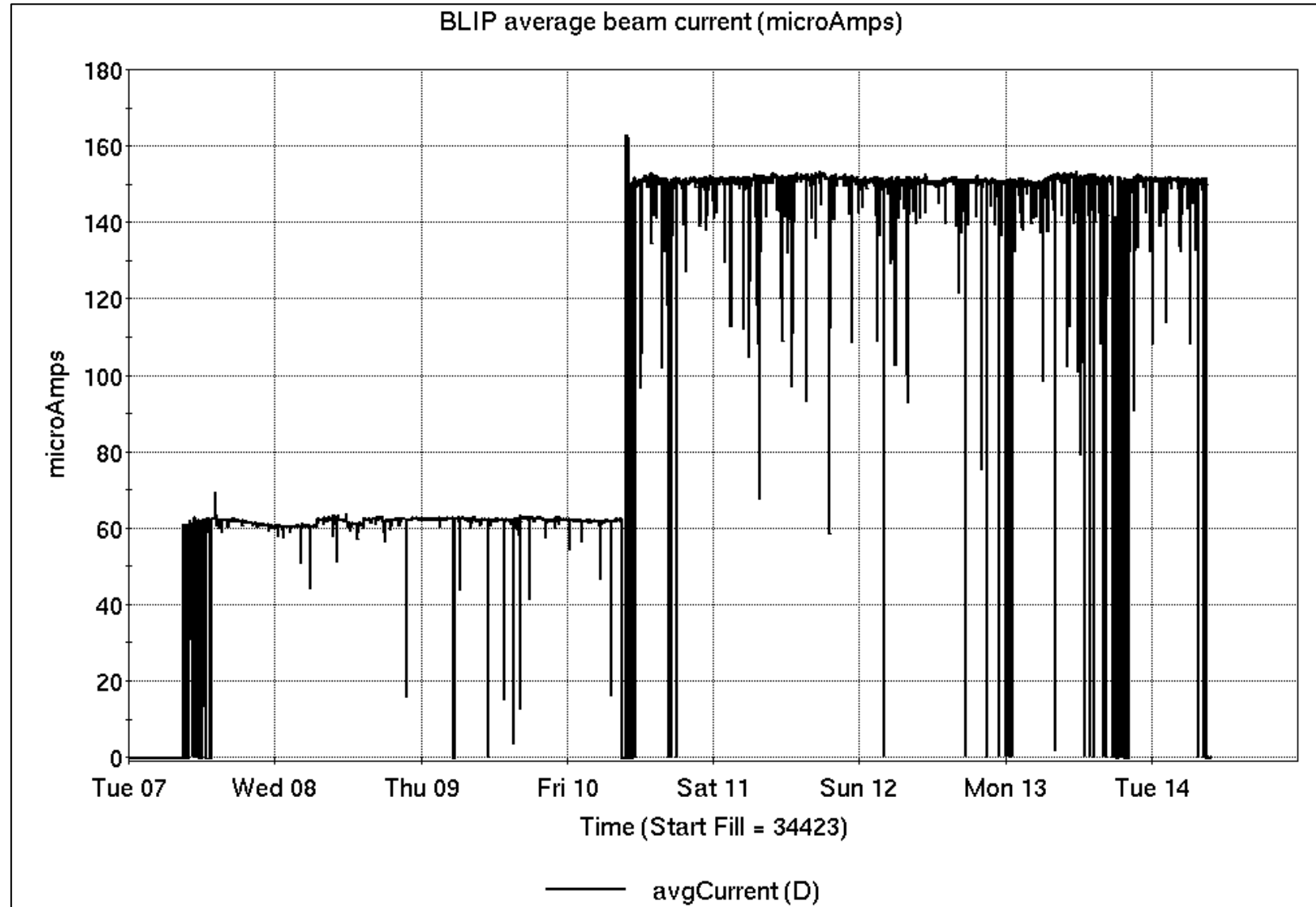
Operations for BLIP

5/7-14/2024:

BLIP 117 MeV La target production began Tuesday, followed by 200MeV Th target run, continuing throughout the week.

- 161.4 hr Production
- 2.92 hr Failure
- 0.96 hr Shutdown

Availability: **98.4%**



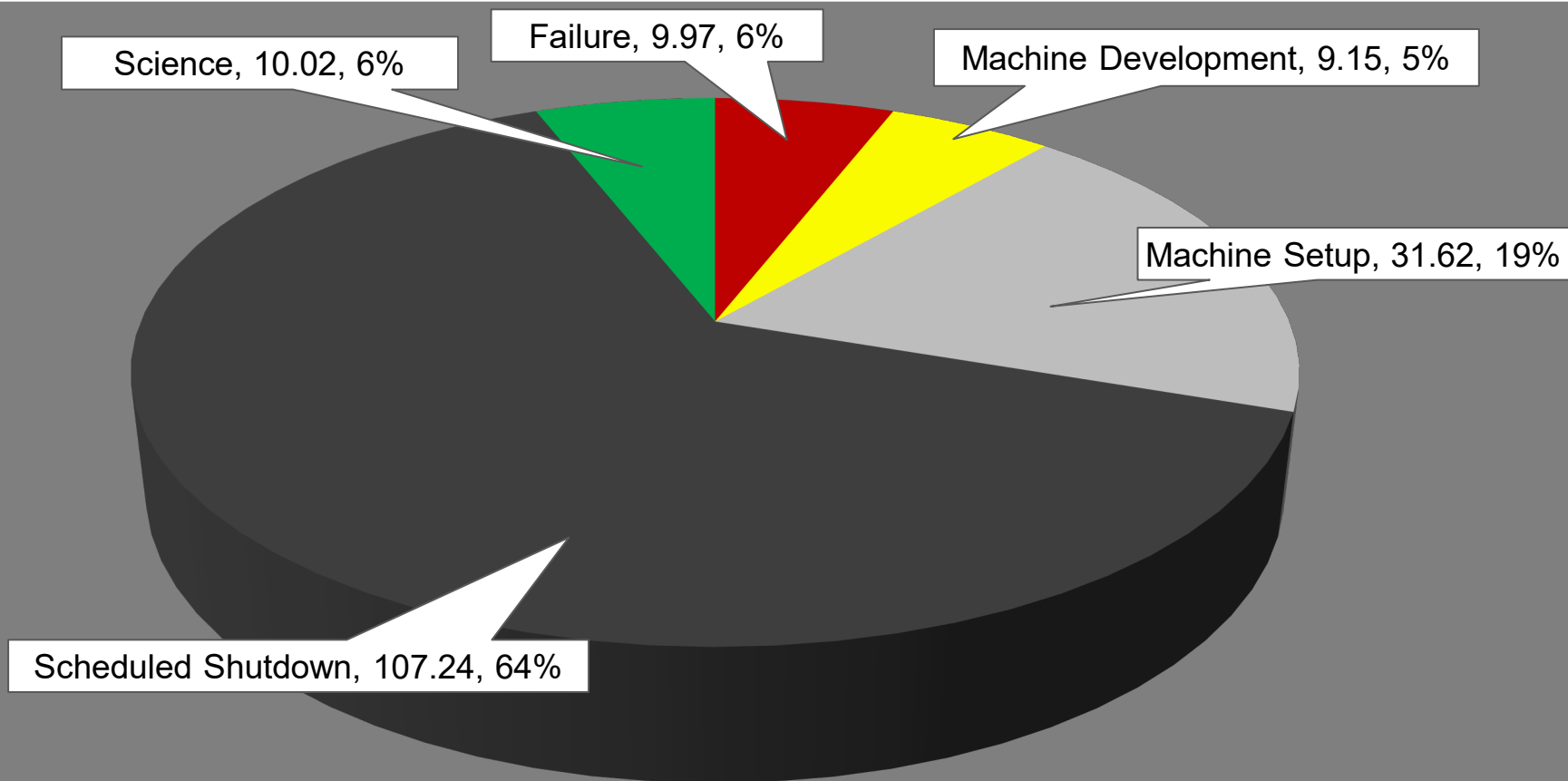
NSRL activity past week: 5/7-14/2024 (as of 0800)

NSRL: NASA biology continues, as primary user in GCR mode; additional users this week.

Protons, 9 EBIS ions in use. (He, C, O, Si, Fe, Ag, Tb, Bi, Au)

Run 24-A/B schedule ends 21 May. Run 24-C follows on 22 May. Schedule posted, [details updating](#); beam into November.

NSRL Hours



Availability: 83.6%

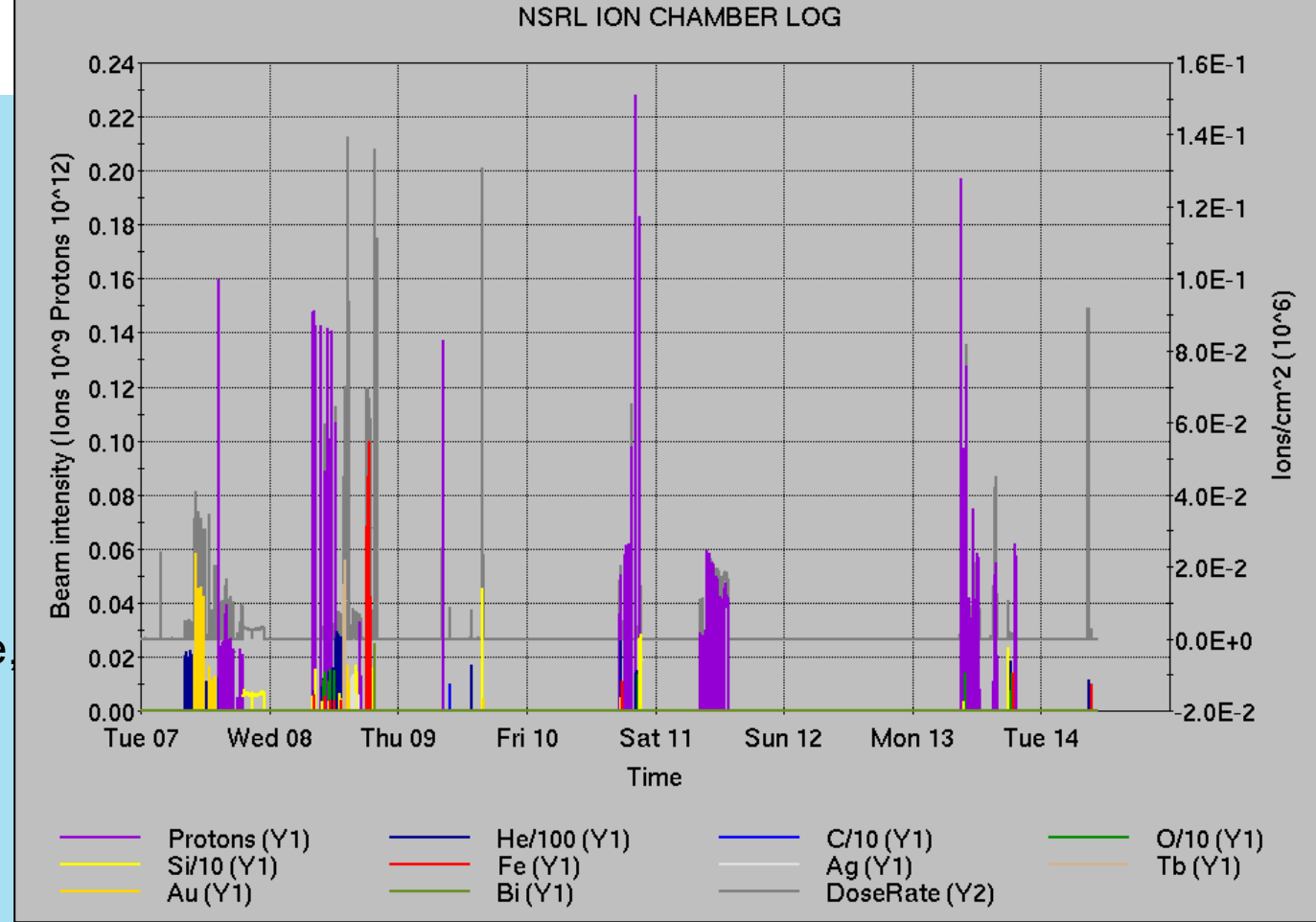
Notes from Operations

Notable failures (>1 hr)

- Polarized source unavailable, water leak repairs. Delays switching/restoring unpolarized/polarized source
- Blue injection kicker failure (2x)
- AGS MMPS failure, Ramp module 5
- Beam abort, lead flow trips from Cryo CPU failure.
- RHIC RF cavity motor controller faults (5x)
- PASS interlock on Booster circulating beam valve replaced 24V PS

Other notes

- Mild power dip, AGS cold snake and other various trips
- NSRL valve interlocks, bad gauges (2x)
- Blown sweep 12z1, 4z1; reswept
- PASS hardware faults, 7z1; reswept 3 zones
- Various Linac trips, resets (12x)
- Beam abort, loss monitor (5x)
- Sector 8 valve box turbo pump



Setup	Filter	Linac	Tandem	EBIS	Booster	AGS	ATR	RHIC	ERL	Other	Total
Total		4	0	1	15	5	5	35	0	27	92
RF		0	0	0	0	1	0	9	0	21	31
PS		2	0	1	0	3	5	11	0	2	22
Vacuum		2	0	0	9	1	0	5	0	2	19
Inst		0	0	0	0	0	0	6	0	4	10
Other		0	0	0	6	0	0	4	0	0	10

Please continue to address

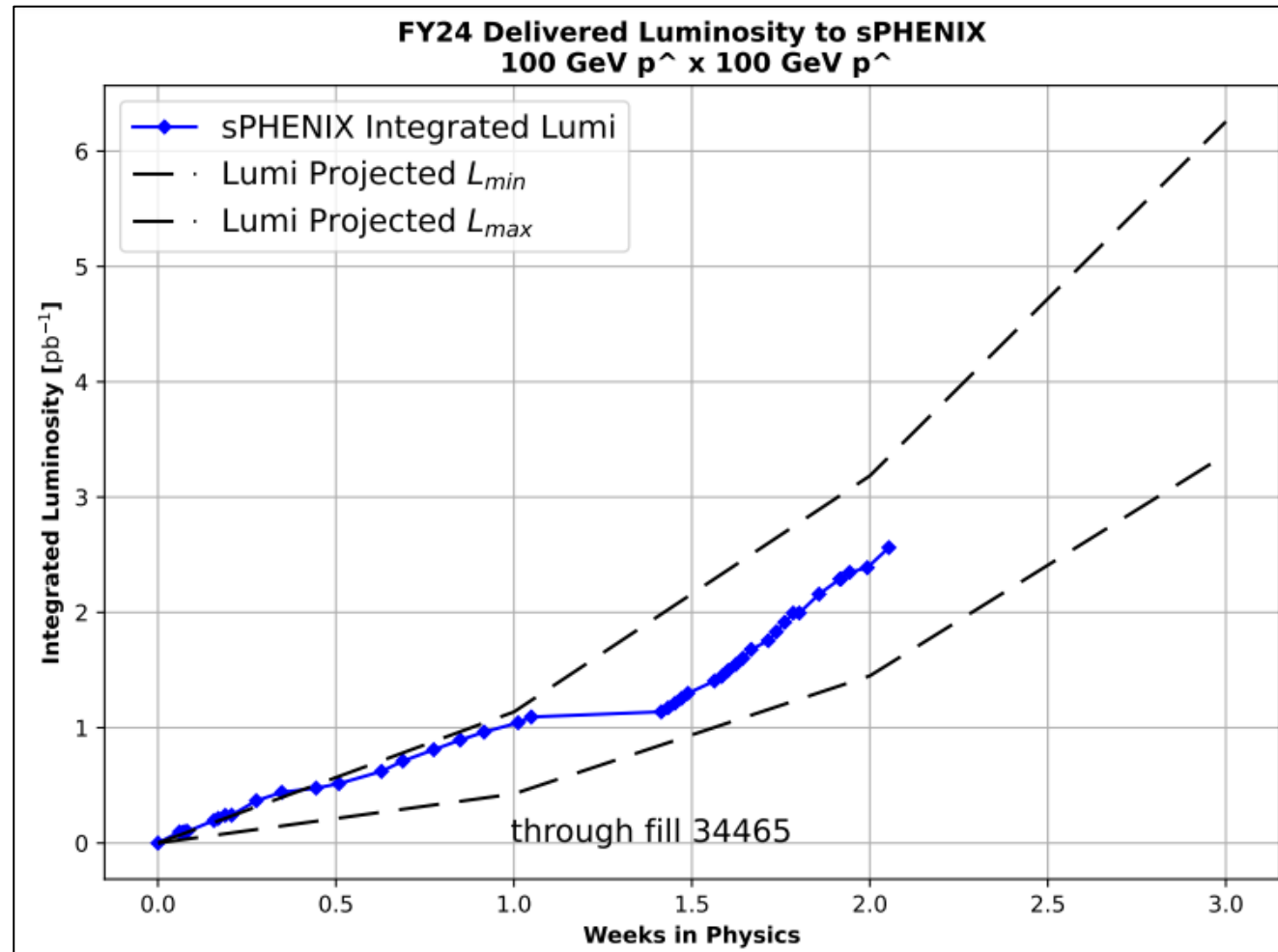
Setup	Filter	Linac	Tandem	EBIS	Booster	AGS	ATR	RHIC	ERL	Other	Total
Total		94	3	4	11	5	14	13	0	26	170
RF		0	0	0	0	0	0	0	0	17	17
PS		91	0	4	0	3	13	4	0	0	115
Vacuum		1	3	0	8	0	0	0	0	1	13
Inst		0	0	0	0	1	0	5	0	4	10
Other		2	0	0	3	1	1	4	0	4	15

Reminder from Operations

- MCR continues Operations for:
 - BLIP – ends 21 May; resumes 3 June.
 - NSRL user running scheduled Mon-Fri; NASA Biology, other users this week and next.
 - AGS/Booster polarized proton setup continues, additional to RHIC physics.
 - Setting up multiple (proton) AGS PPM Users, polarization scans.
 - Injector **Au setup as yet untested**.
 - Skew quad **testing continues**.
 - RHIC beam for Physics stores.
 - Other MD, Maintenance, APEX as noted
- **Remember to coordinate with MCR.** *This includes the gate watch!*
- CHECK AND EDIT YOUR OWN CONTACT INFO
 - <http://directory.pbn.bnl.gov/>
- CHECK YOUR CALLIN LIST: **WCC** and **ECP** updates needed
 - https://www.cadops.bnl.gov/Operations/personnel/call_in_lists/

STAR, FOM plots
forthcoming

Preliminary delivered Luminosity, Figure of Merit (LP^2) data for RHIC



Courtesy R. Terheide

Availability: RHIC Run-24

