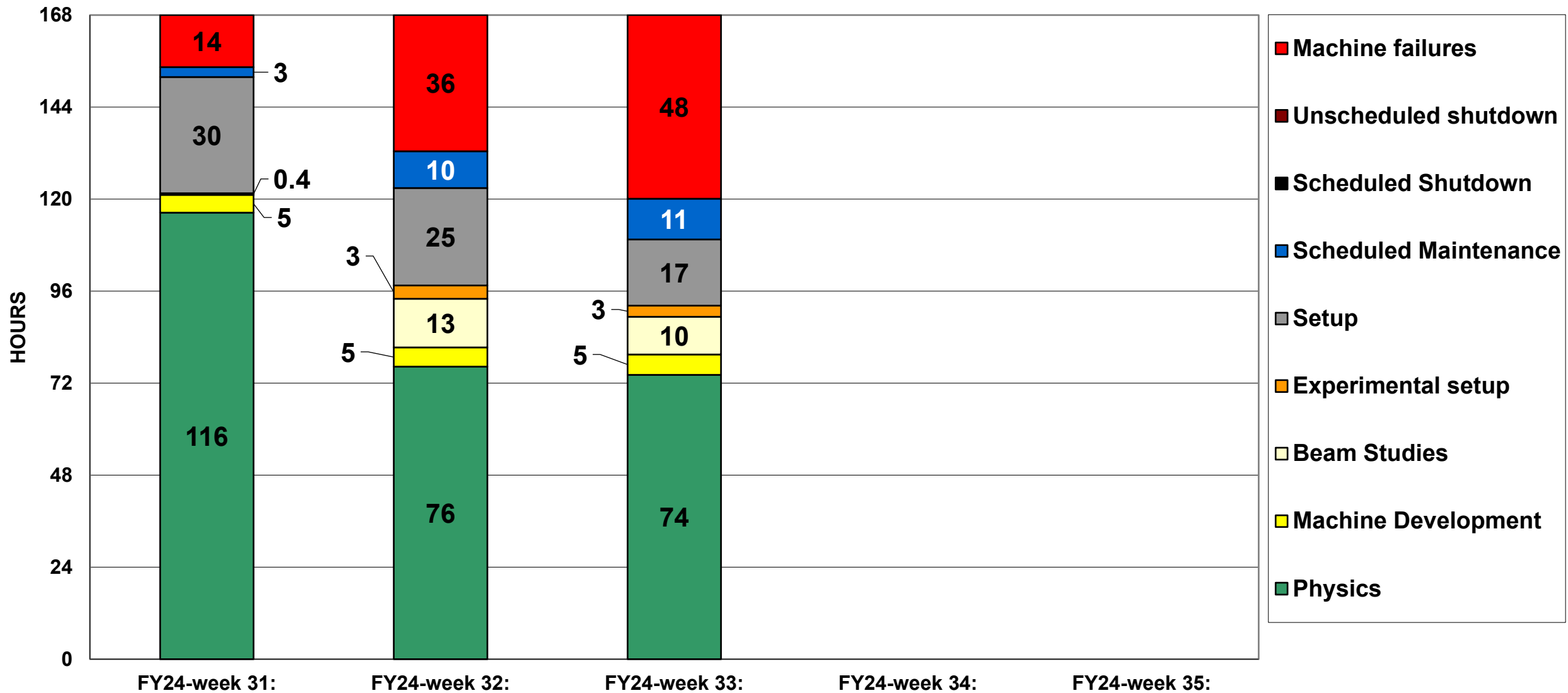
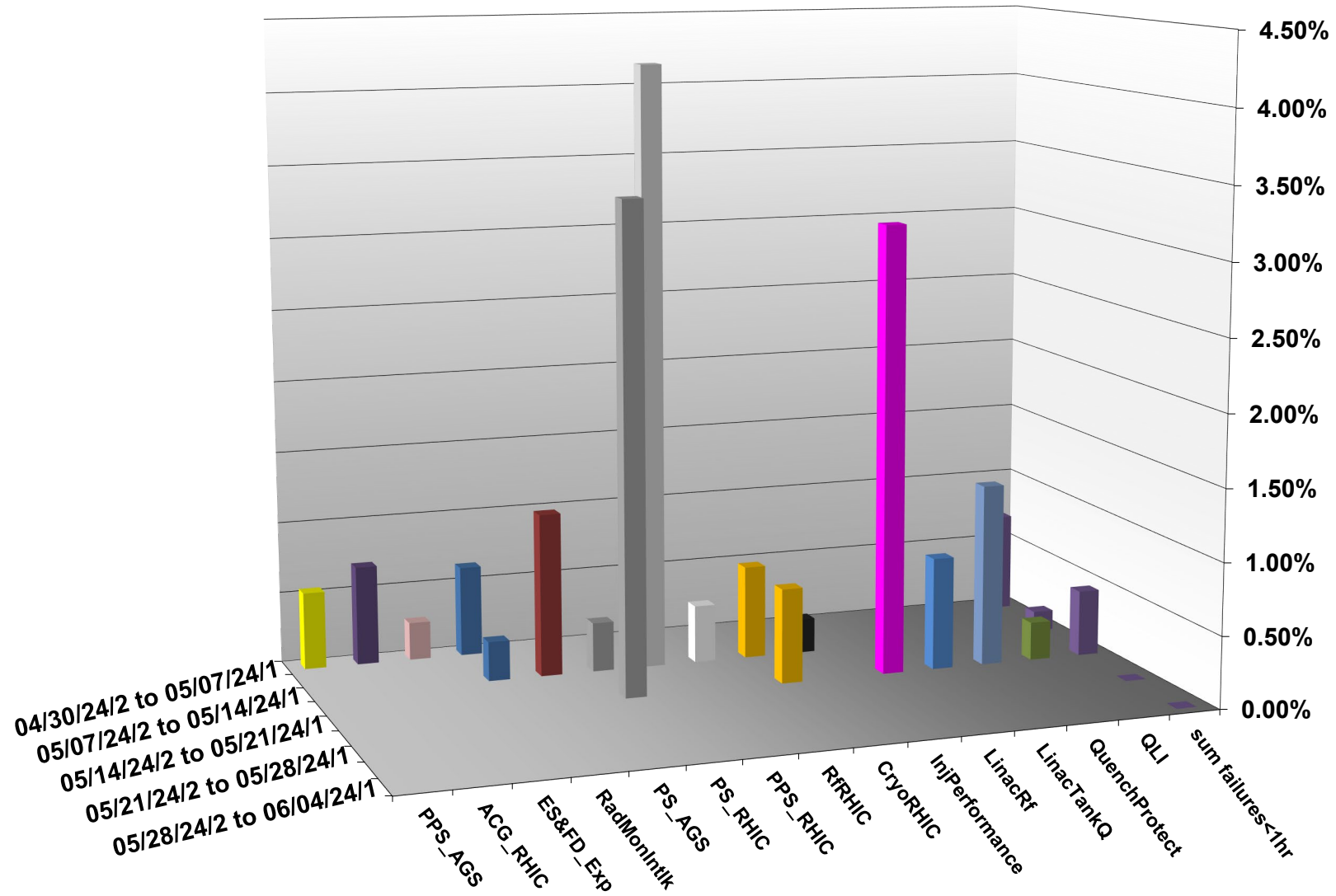


C-AD ACTIVITY MAY 2024



INTEGRATED FAILURES (GREATER THAN ONE HOUR) BY SYSTEM -- MAY 2024



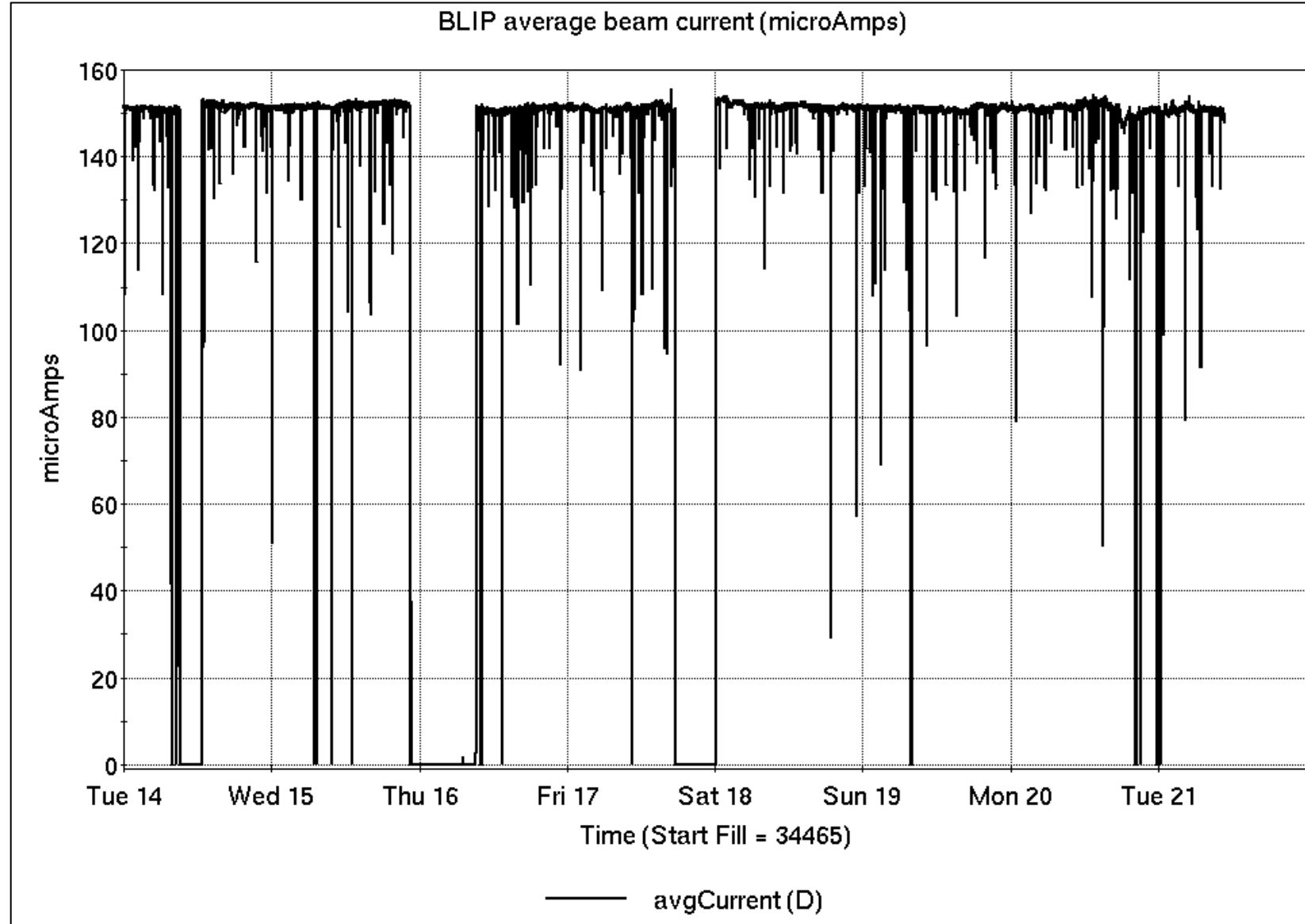
Operations for BLIP

5/14-21/2024:

200 MeV Th target production run continued throughout the week; ends later today.

- 145.7 hr Production
- 22.3 hr Failure

Availability: 86.7%



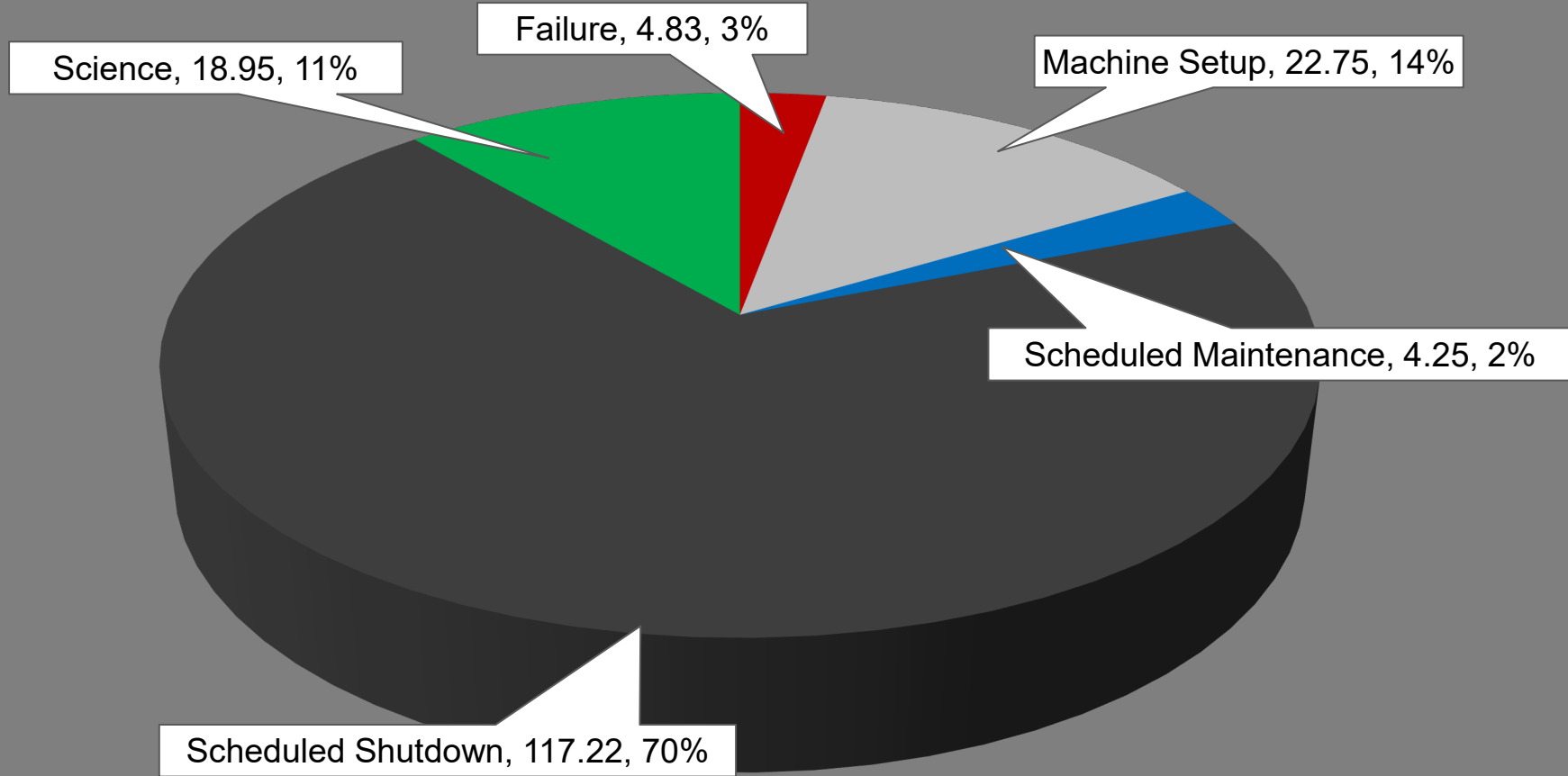
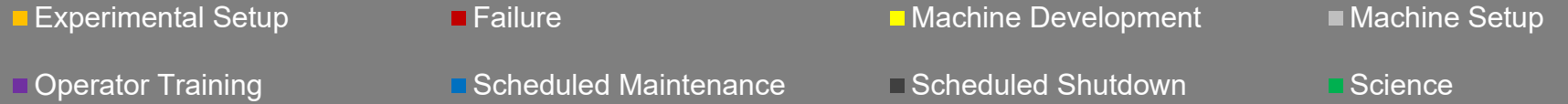
NSRL activity past week: 5/14-21/2024 (as of 0800)

NSRL: NASA biology concludes, as primary user in GCR mode; additional users this week.

Linac protons, 9 EBIS ions in use. (He, C, Ne, O, Si, Ti, Fe, Bi, Au)

Run 24-A/B schedule ends 21 May. Run 24-C follows on 22 May. Schedule posted, [details updating](#); beam into November.

NSRL Hours



Notes from Operations

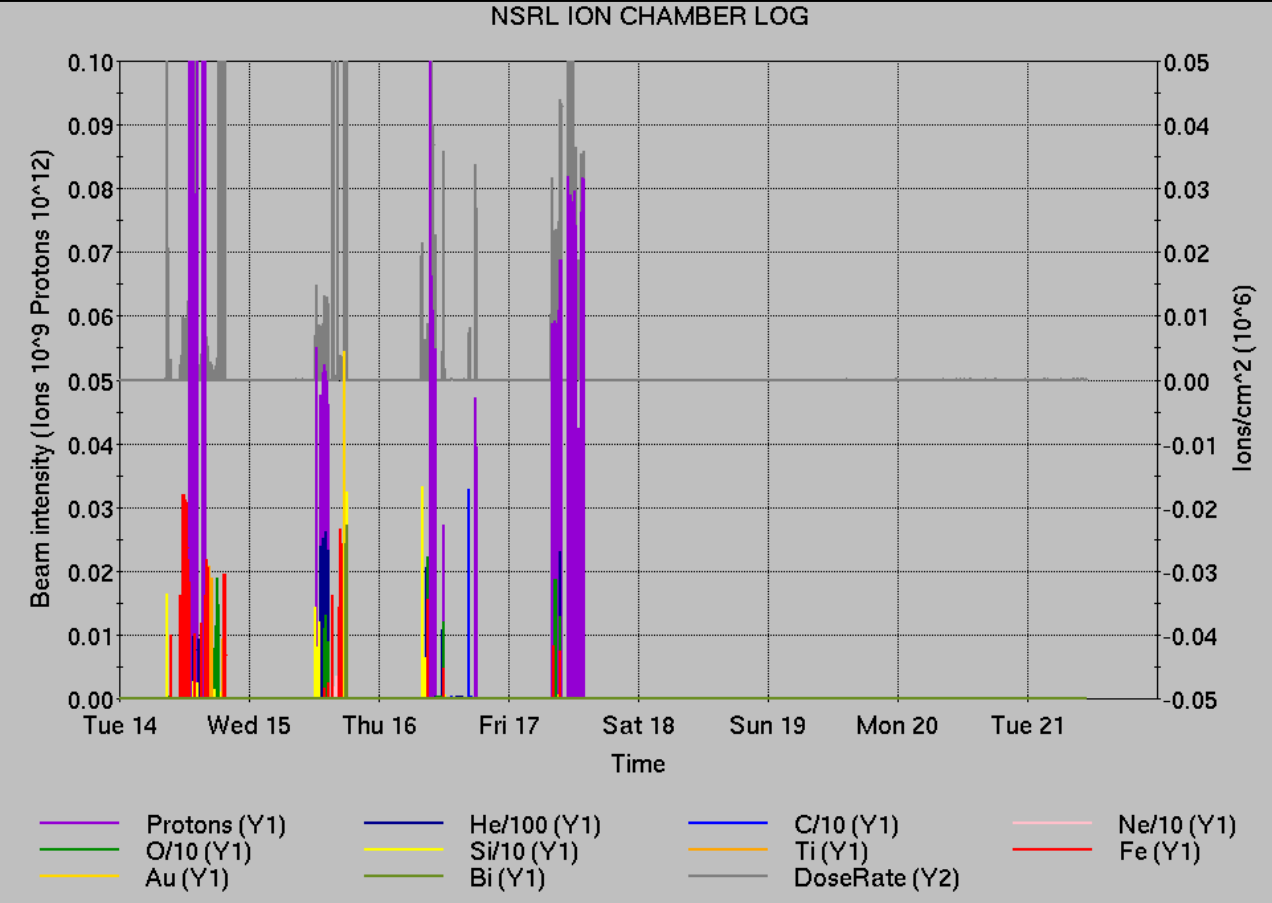
Notable failures (>1 hr)

- Linac Mod 9 q14 pulser PS failure, cards replaced
- Blue b8-dhx PS failure, regulator card & time constant board
- Linac Mod 2 failure, driver cart replaced
- Cryo network communication failure; beam restoration delayed by TPC testing
- Sector 12 Blue DX/D0 PS/QPA issues (5x), ongoing
- Access for iceball, sector 12; heaters restored
- Rotator QLI, cryo recovery (high current setpoint)
- Linac Mod 8 failure, 50kV PS monitor relay repaired

Other notes

- Beam aborts
 - Reboot of PASS PLC
 - Loss monitor (4x)
 - Position monitor (1x)
 - RF (1x)
 - Yellow QLI, beam induced
- ATR swm-ps polarity switch failures, undiagnosed
- sPHENIX solenoid trip from Cryo failure
- Bldg 1012A, Alcove 7a HVAC issues persist
- AGS RF station E trip
- xth3-ps breaker trips
- IR10 PS node card failure required local reset

Various Linac trips/resets
 AGS A17 quad PS failure
 BLIP MW failure



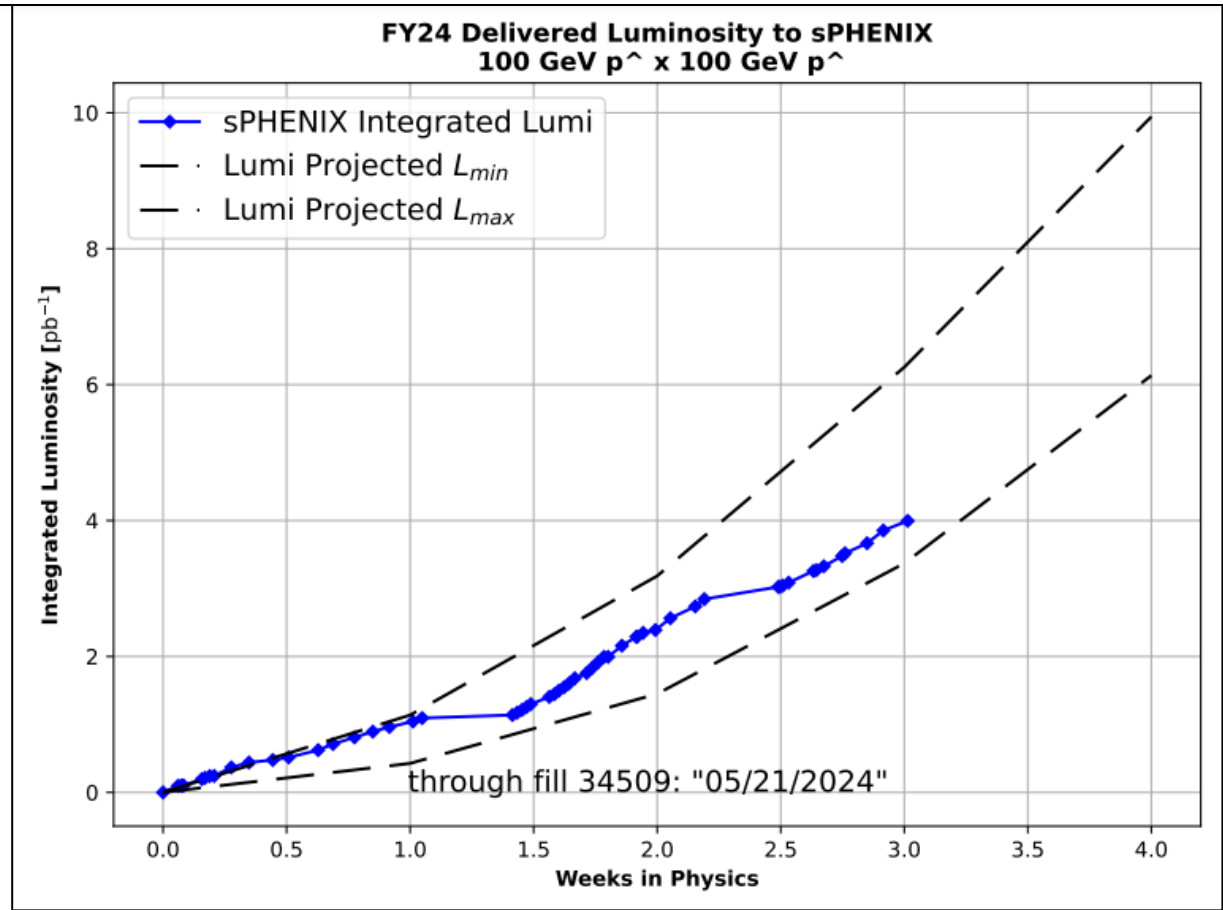
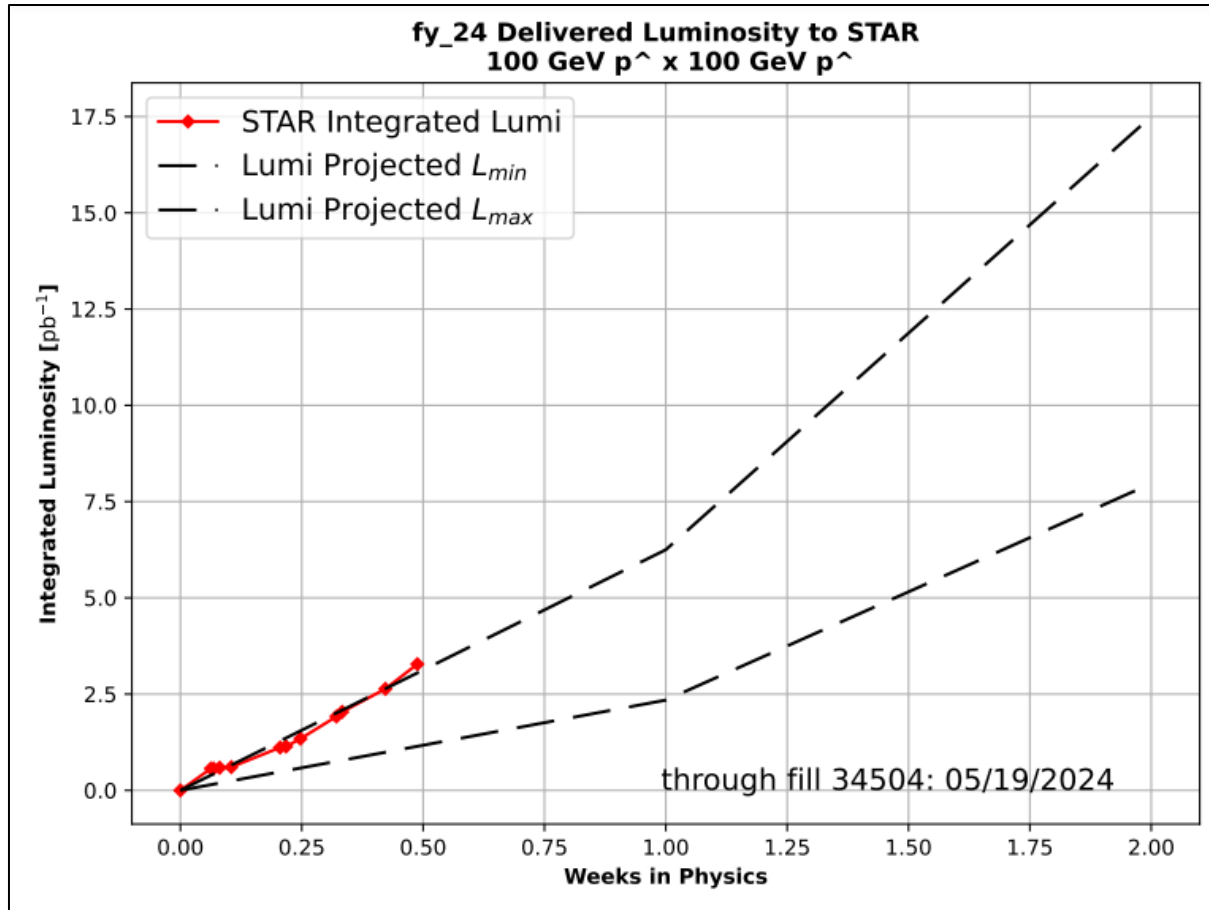
Linac gets a silver 🏆

Setup	Filter	Linac	Tandem	EBIS	Booster	AGS	ATR	RHIC	ERL	Other	Total
Total		0 (2)	3 (203)	1 (4)	6 (20)	5 (14)	15 (5)	436 (24)	0 (4)	23 (19)	489 (295)
RF		0 (0)	0 (0)	0 (0)	0 (0)	1 (1)	0 (0)	0 (0)	0 (0)	17 (5)	18 (6)
PS		0 (0)	0 (176)	1 (4)	1 (0)	3 (6)	12 (2)	426 (13)	0 (0)	0 (1)	443 (202)
Vacuum		0 (2)	3 (25)	0 (0)	4 (20)	0 (0)	0 (3)	0 (10)	0 (4)	0 (9)	7 (73)
Inst		0 (0)	0 (2)	0 (0)	0 (0)	0 (2)	2 (0)	0 (1)	0 (0)	4 (3)	6 (8)
Other		0 (0)	0 (0)	0 (0)	1 (0)	1 (5)	1 (0)	10 (0)	0 (0)	2 (1)	15 (6)

Reminder from Operations

- MCR continues Operations for:
 - BLIP – ends 21 May; resumes 3 June.
 - NSRL user running scheduled Mon-Fri; other users this week and next.
 - AGS/Booster polarized proton setup continues, additional to RHIC physics.
 - Setting up multiple (proton) AGS PPM Users; **extraction for split/merge cycle pending**
 - Polarization scans.
 - Injector **Au setup as yet untested.**
 - Skew quad **testing continues.**
 - RHIC beam for Physics stores.
 - Other MD, Maintenance, APEX as noted in schedule
- **Remember to coordinate with MCR. Running 24/7 over holiday weekend...**
- CHECK AND EDIT YOUR OWN CONTACT INFO
 - <http://directory.pbn.bnl.gov/>
- CHECK YOUR CALLIN LIST: **WCC** and **ECP** updates needed
 - https://www.cadops.bnl.gov/Operations/personnel/call_in_lists/

Preliminary delivered Luminosity, Figure of Merit (LP^2) data for RHIC



Courtesy R. Terheide

FOM, other plots forthcoming

Availability: RHIC Run-24

