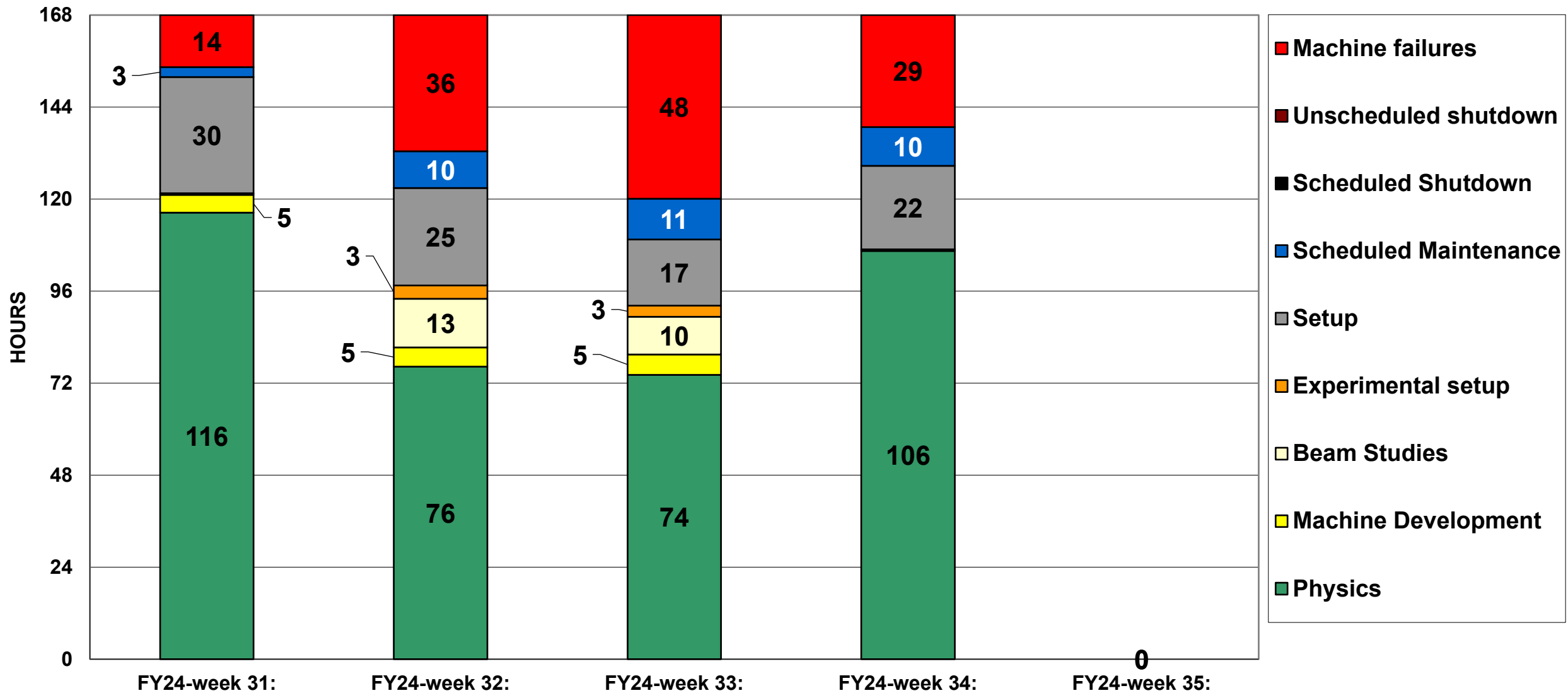
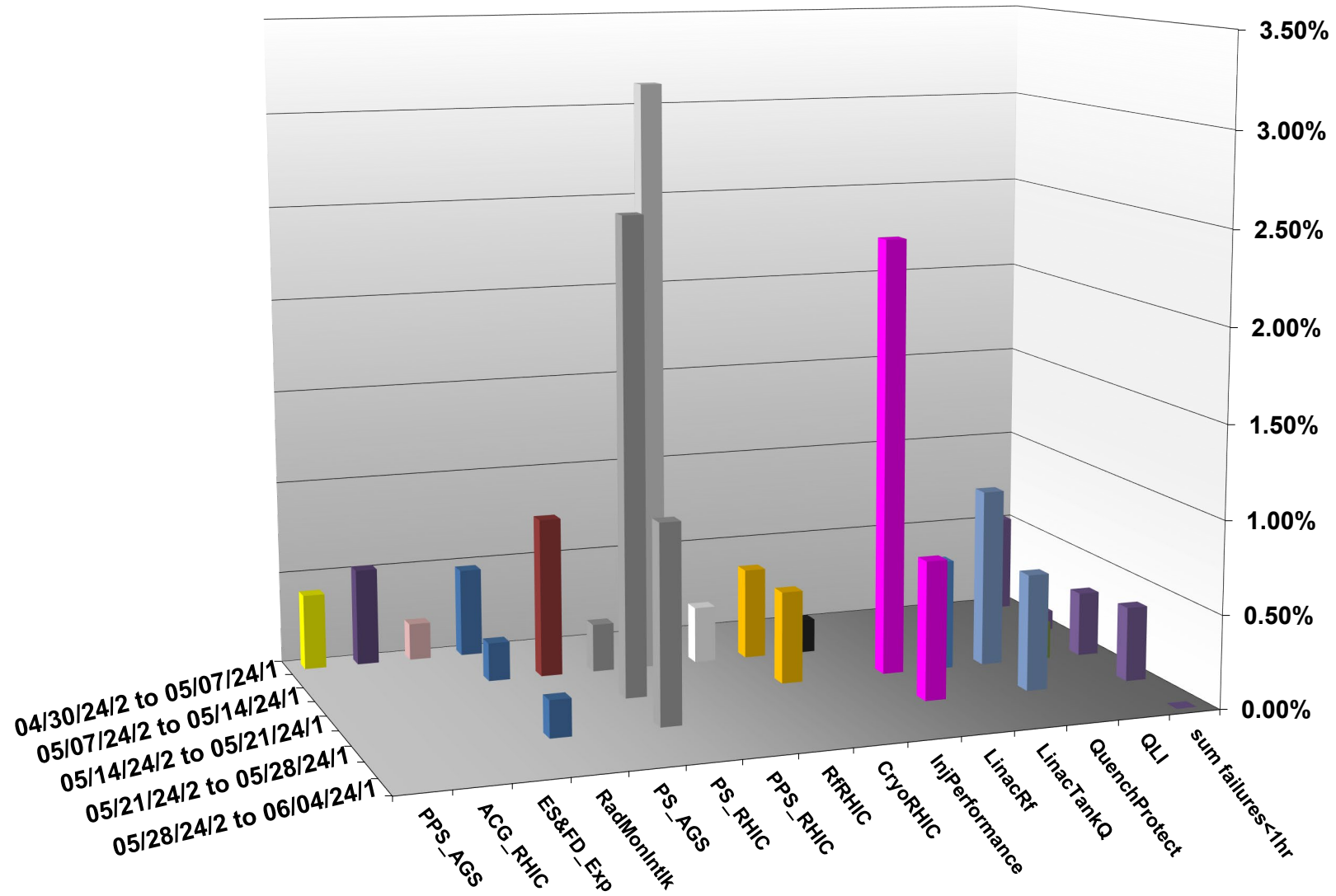


# C-AD ACTIVITY MAY 2024



# INTEGRATED FAILURES (GREATER THAN ONE HOUR) BY SYSTEM -- MAY 2024



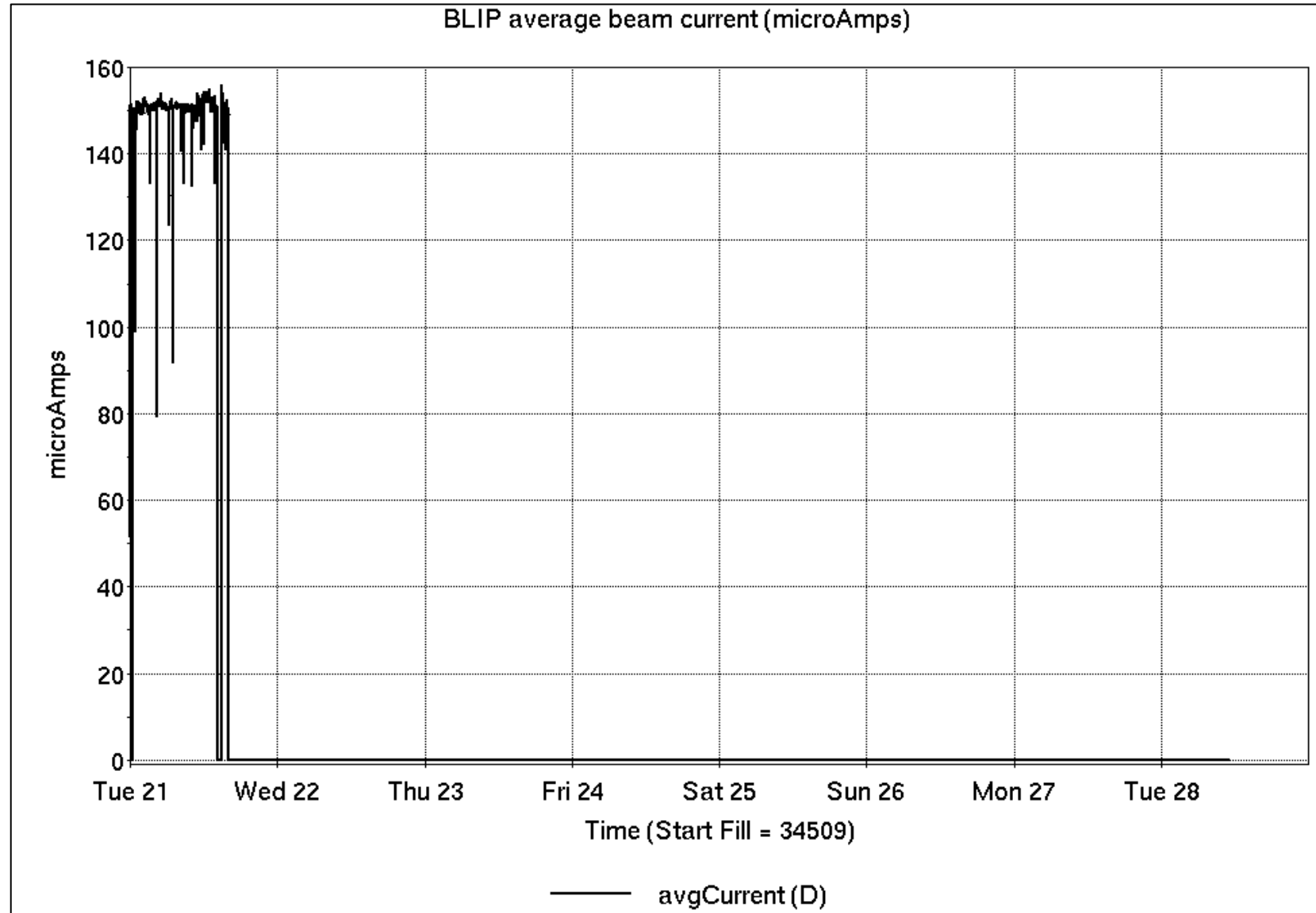
# Operations for BLIP

5/21-28/2024:

200 MeV Th target ended last Tuesday afternoon with no BLIP beam scheduled the remainder of the week.

- 7.47 hr Production
- 0.53 hr Failure

Availability: 93.4%



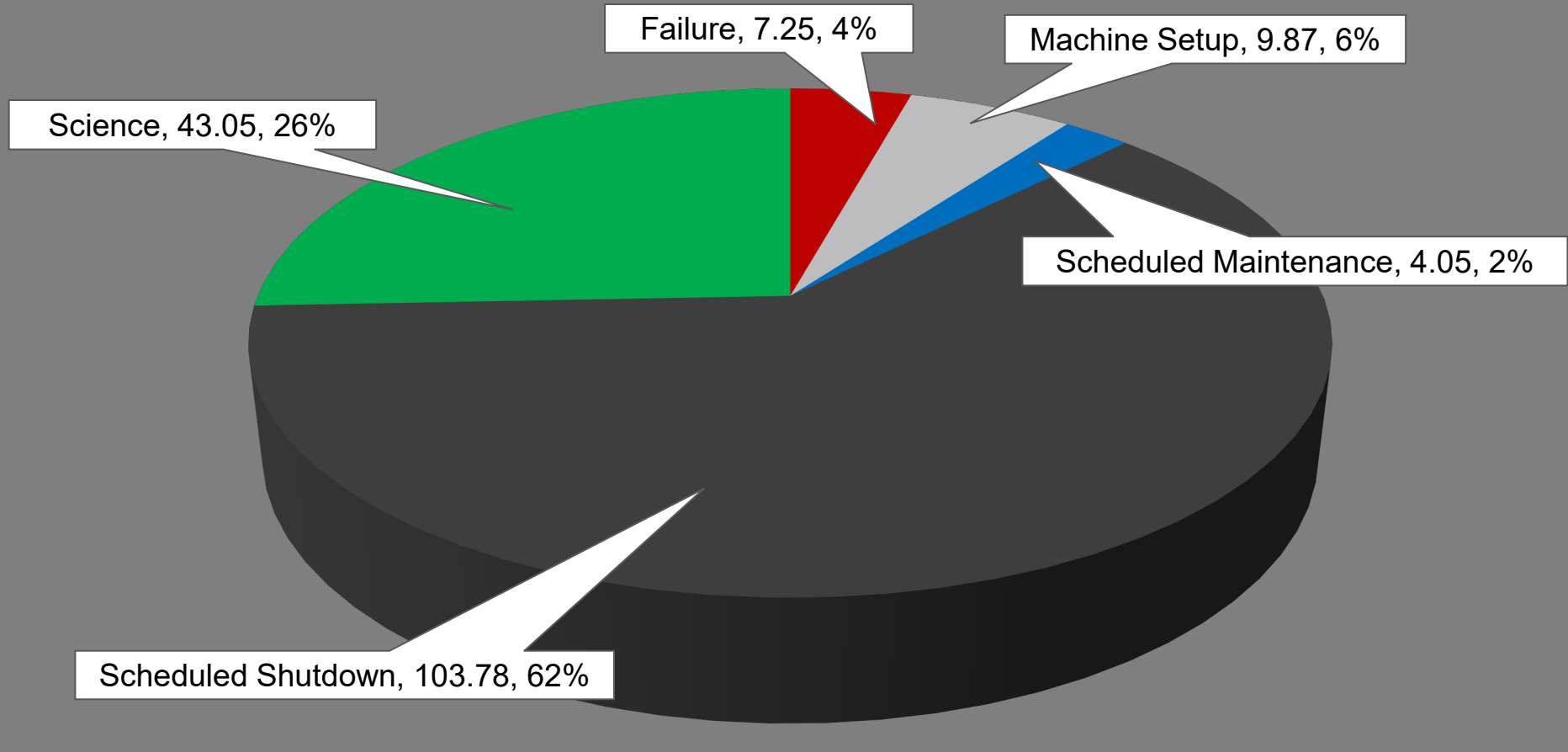
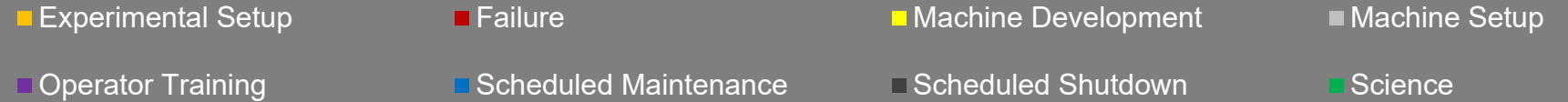
# NSRL activity past week: 5/21-28/2024 (as of 0800)

NSRL: transition from NASA biology to other physics/electronics users last week.

Linac protons, 10 EBIS ions in use. (He, Ne, Si, Ti, Fe, Nb, Ag, Tb, Bi, Au)

Run 24-A/B concluded; Running 24-C schedule since 22 May. Schedule posted, [details updating](#); beam into November.

## NSRL Hours



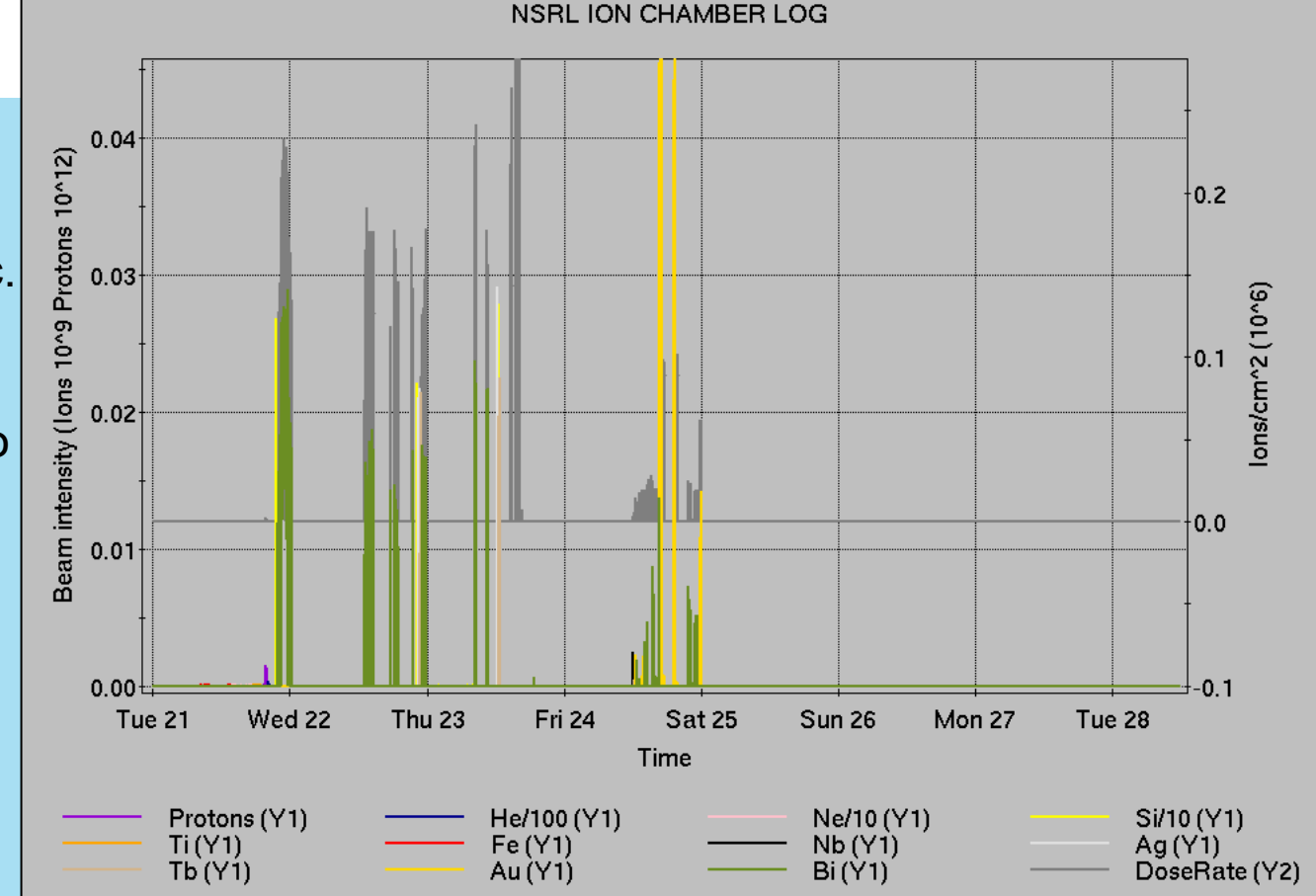
# Notes from Operations

## Notable failures (>1 hr)

- QPAIC repairs for RHIC Sector 12 DX/D0 power supplies. Additional repairs to QPA, connectors, etc.
- Extended access for sPHENIX work on TPC
- Linac Mod 7 failure (2x)
- RHIC 56 MHz cryo failure, access for cryostat turbo pump replacement
- ACS failure 8z1 alert loop, lost sweep
- EBIS solenoid cooling failure, required HV cage entry
- Weather stand down (2x)
- Booster F7 BLW fuse failure, required BMMPS lockout
- Yellow rotator QLI, recovery
- Controls PS FEC failures in 7c, 3a

## Other notes

- (Power outage not logged to this week's failures)
- Beam aborts, loss monitor (7x)
- Linac Mod 8618 tube replacement, behind store
- Various Linac trips/resets
- H-jet pump failure



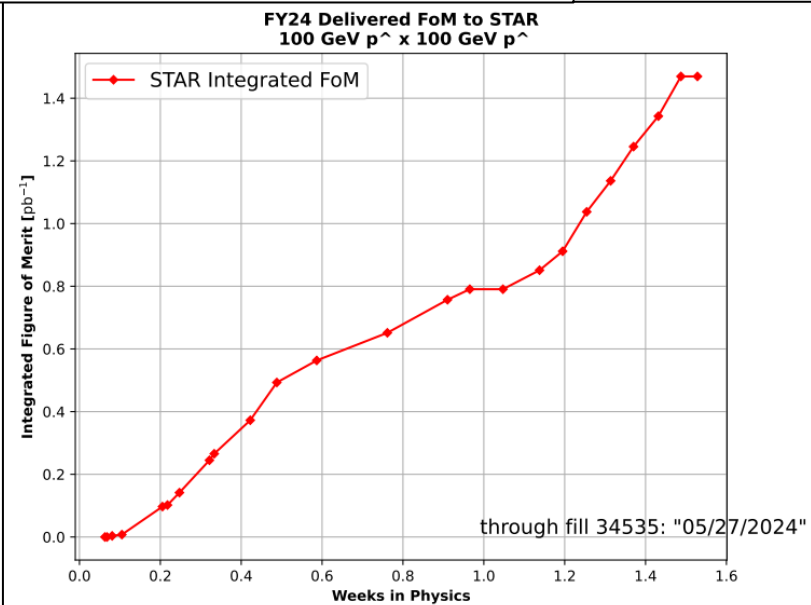
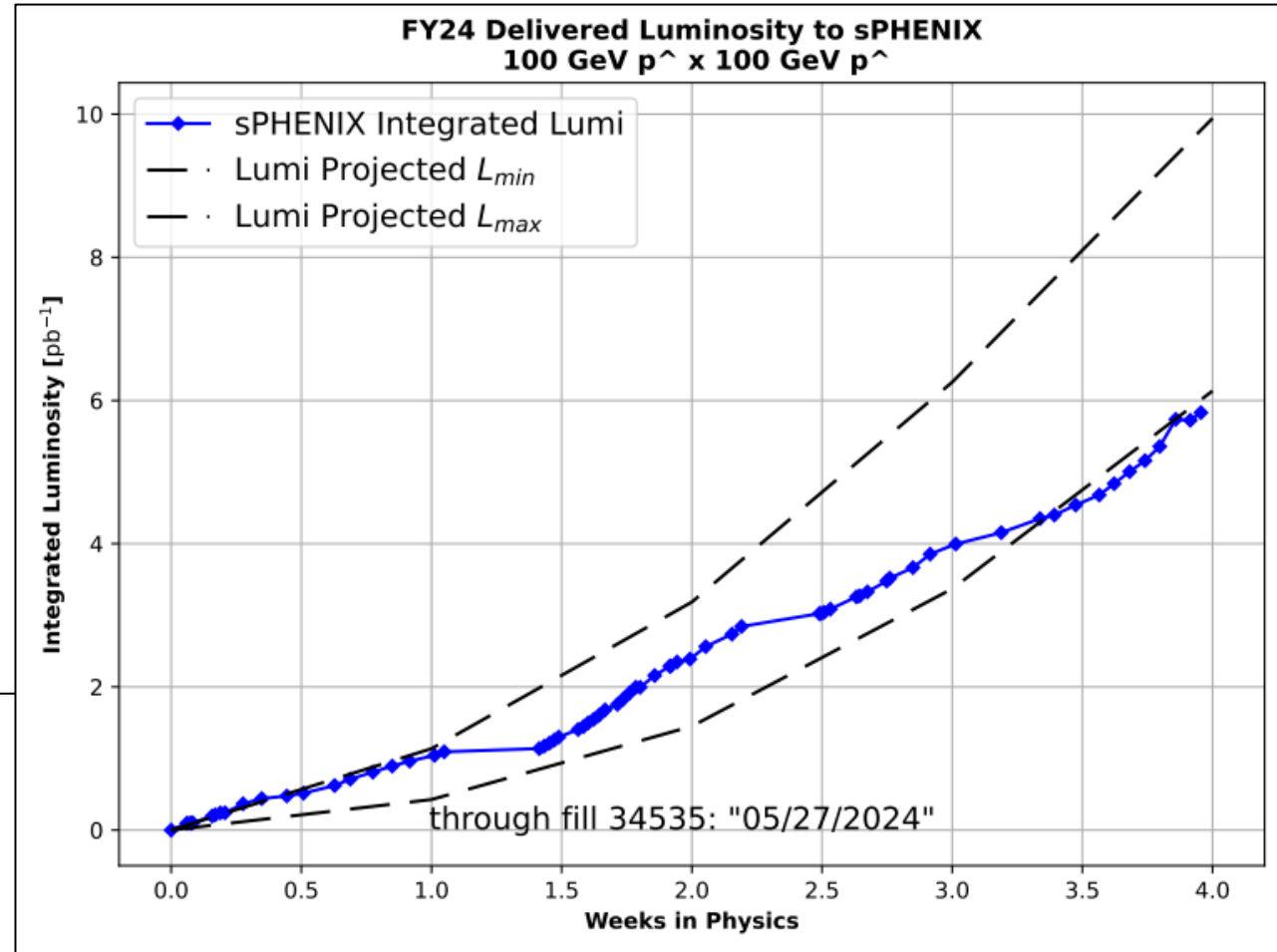
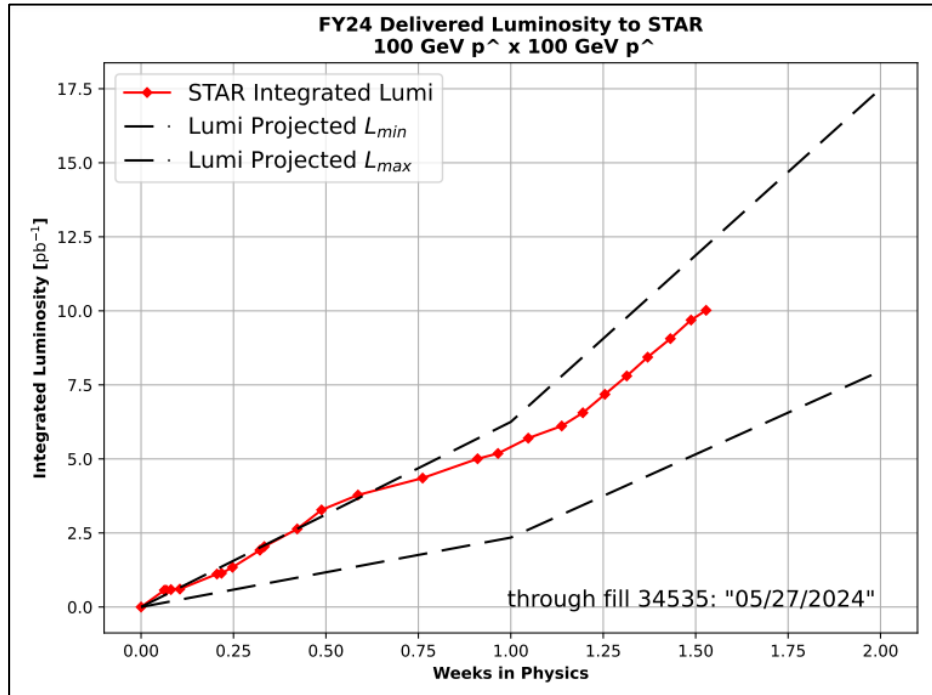
Linac gets another silver 🏆

Setup	Filter	Linac	Tandem	EBIS	Booster	AGS	ATR	RHIC	ERL	Other	Total
Total		0 (5)	1 (231)	70 (4)	20 (10)	248 (9)	11 (0)	24 (5)	0 (0)	32 (15)	406 (279)
RF		0 (0)	0 (0)	0 (0)	8 (0)	3 (0)	0 (0)	0 (0)	0 (0)	14 (3)	25 (3)
PS		0 (1)	0 (201)	64 (4)	0 (0)	215 (2)	7 (0)	11 (3)	0 (0)	0 (1)	297 (212)
Vacuum		0 (2)	1 (28)	1 (0)	7 (9)	24 (0)	2 (0)	4 (1)	0 (0)	0 (7)	39 (47)
Inst		0 (0)	0 (2)	0 (0)	0 (0)	0 (2)	0 (0)	2 (1)	0 (0)	5 (3)	7 (8)
Other		0 (2)	0 (0)	5 (0)	5 (1)	6 (5)	2 (0)	7 (0)	0 (0)	13 (1)	38 (9)

# Reminder from Operations

- Power outage recovery continues.
- MCR continues Operations for:
  - BLIP – resumes 3 June.
  - NSRL user running scheduled Tue-Fri, Mon-Sat this week and next.
  - AGS/Booster polarized proton setup continues, additional to RHIC physics.
    - Setting up multiple (proton) AGS PPM Users; extraction for split/merge cycle pending
    - Polarization scans, tuning pending cold snake failure.
    - Injector Au setup as yet untested.
    - Skew quad testing continues as beam time allows.
  - RHIC beam for Physics stores.
    - Other MD, Maintenance, APEX as noted in schedule
- Remember to coordinate with MCR.
- CHECK AND EDIT YOUR OWN CONTACT INFO
  - <http://directory.pbn.bnl.gov/>
- CHECK YOUR CALLIN LIST: WCC and ECP updates needed
  - [https://www.cadops.bnl.gov/Operations/personnel/call\\_in\\_lists/](https://www.cadops.bnl.gov/Operations/personnel/call_in_lists/)
  - Note: Core Electrical contacts listed/managed on ESSHQ callin list

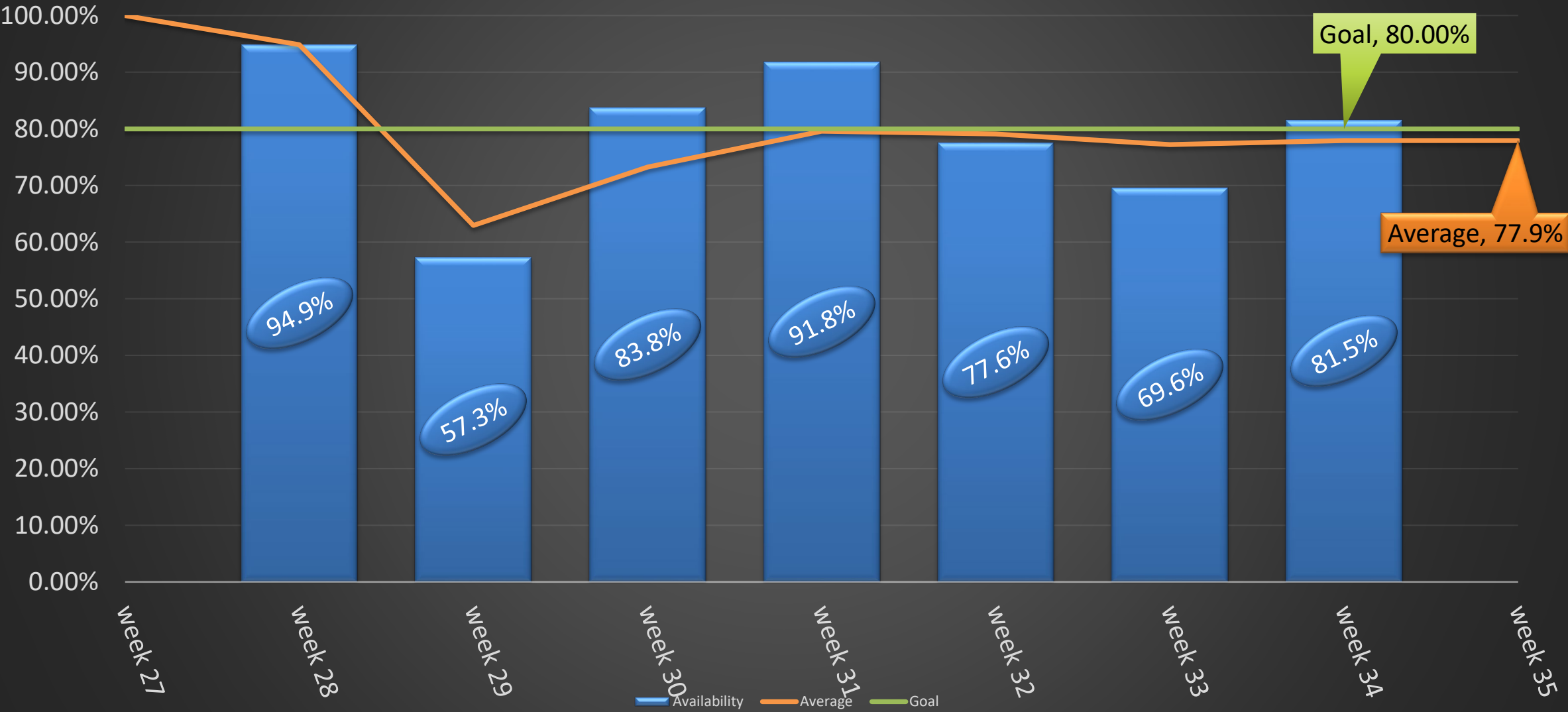
# Preliminary delivered Luminosity, Figure of Merit (LP<sup>2</sup>) data for RHIC



Courtesy R. Terheide



# Availability: RHIC Run-24





# Mean Time Between Failure, Mean Time To Repair, Average Failure Hours per Day (cryo start to cryo end date)

