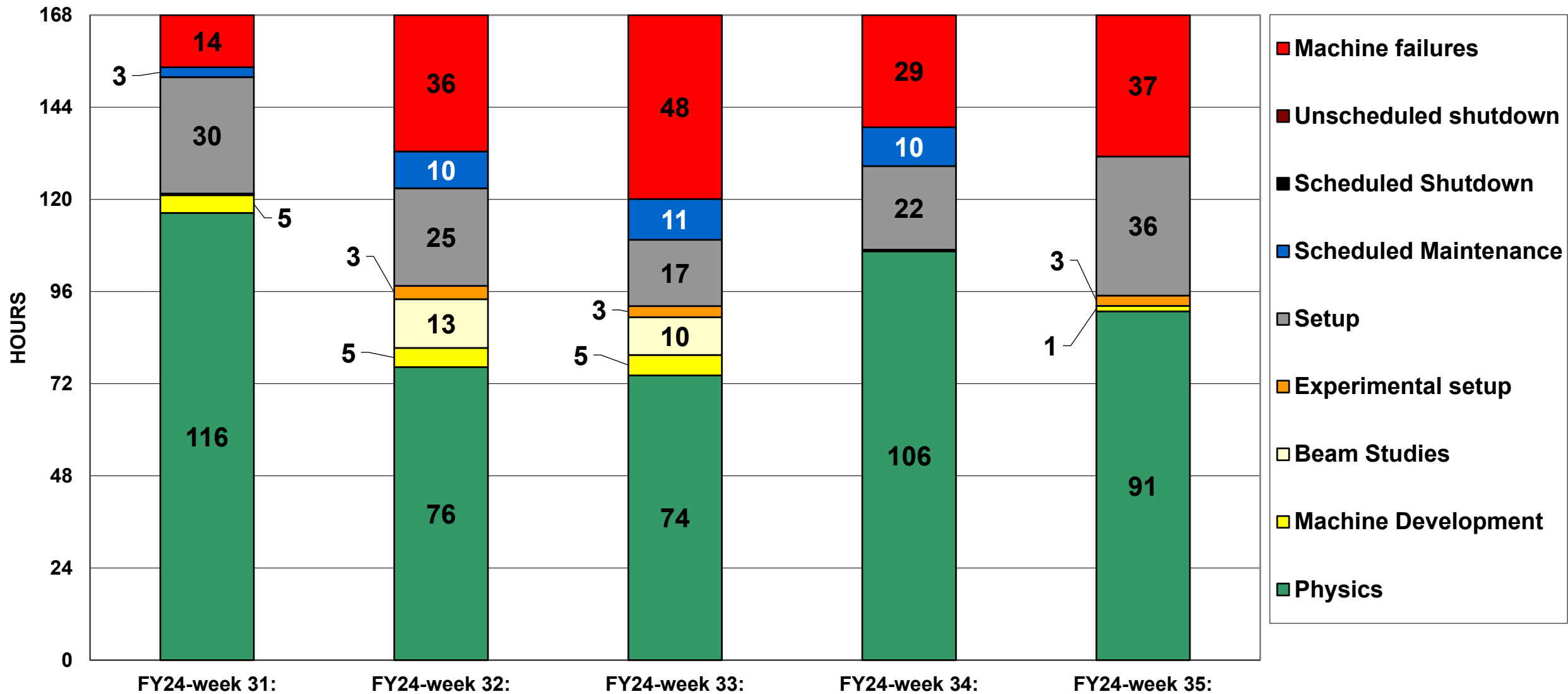
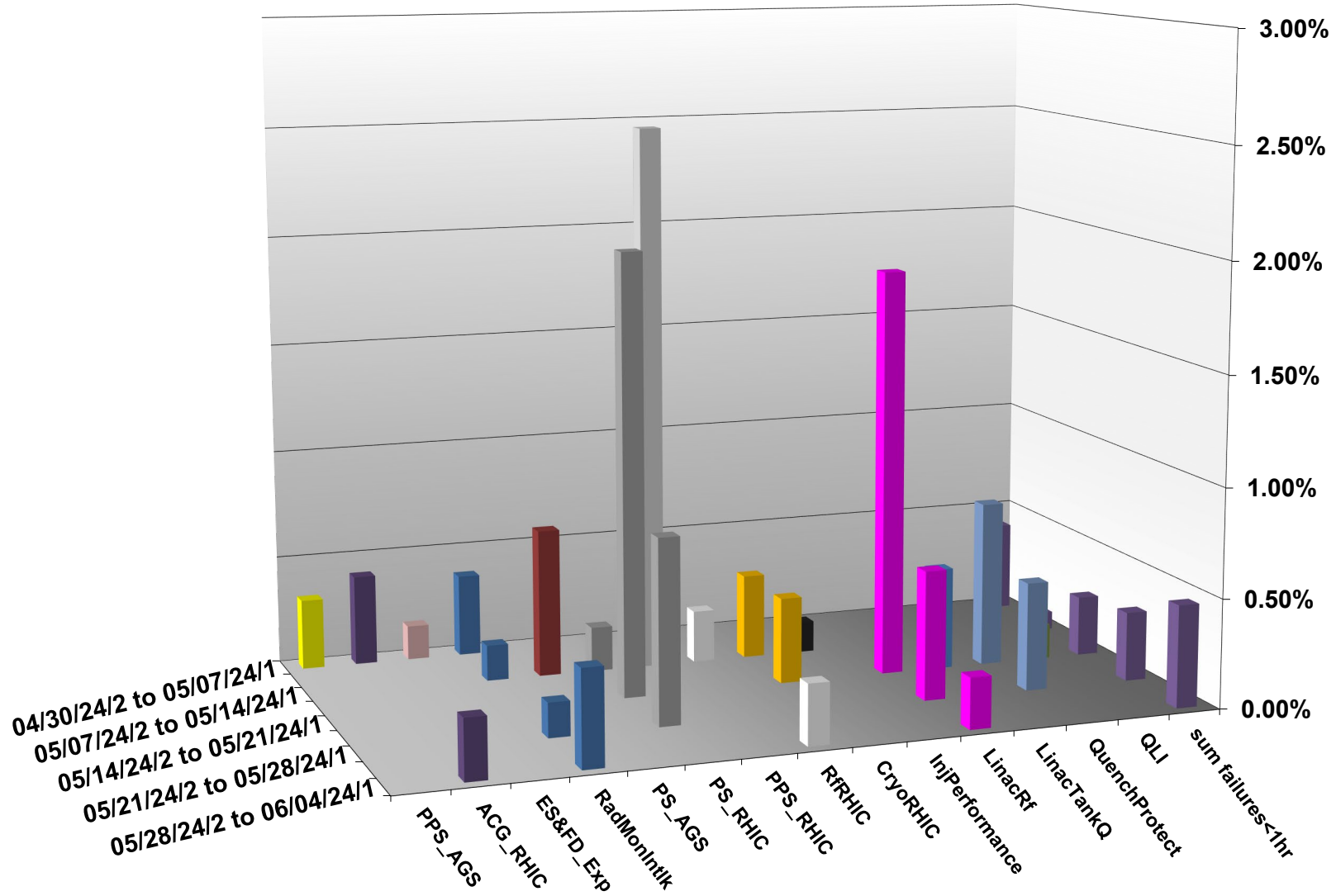


C-AD ACTIVITY MAY 2024



INTEGRATED FAILURES (GREATER THAN ONE HOUR) BY SYSTEM -- MAY 2024



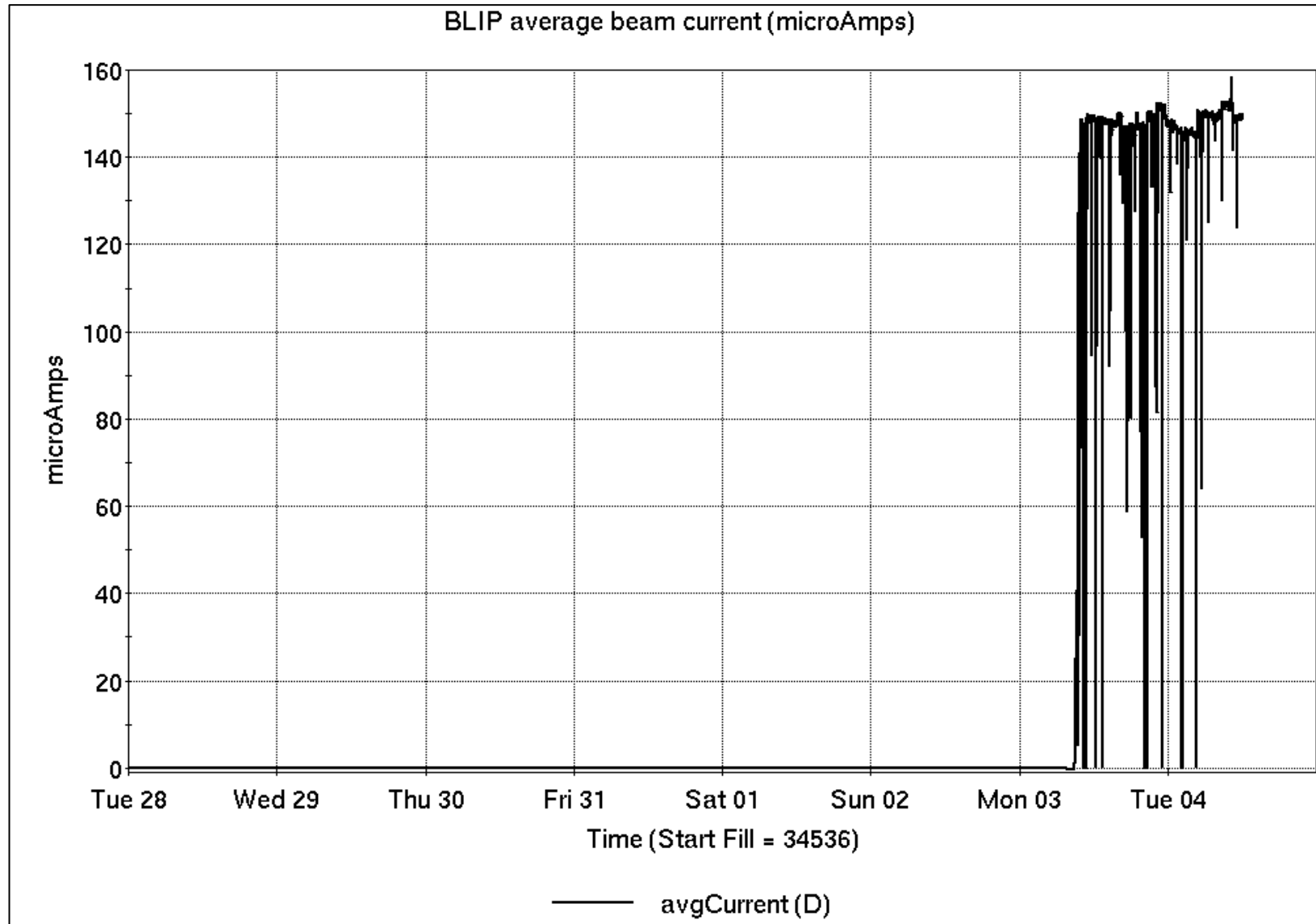
Operations for BLIP

5/28-6/4/2024:

200 MeV Th target resumed Monday. Beam current from Source #2 variable

- 20.45 hr Production
- 1.97 hr Setup
- 0.58 hr Failure

Availability: 97.5%



NSRL activity past week: 5/21-28/2024 (as of 0800)

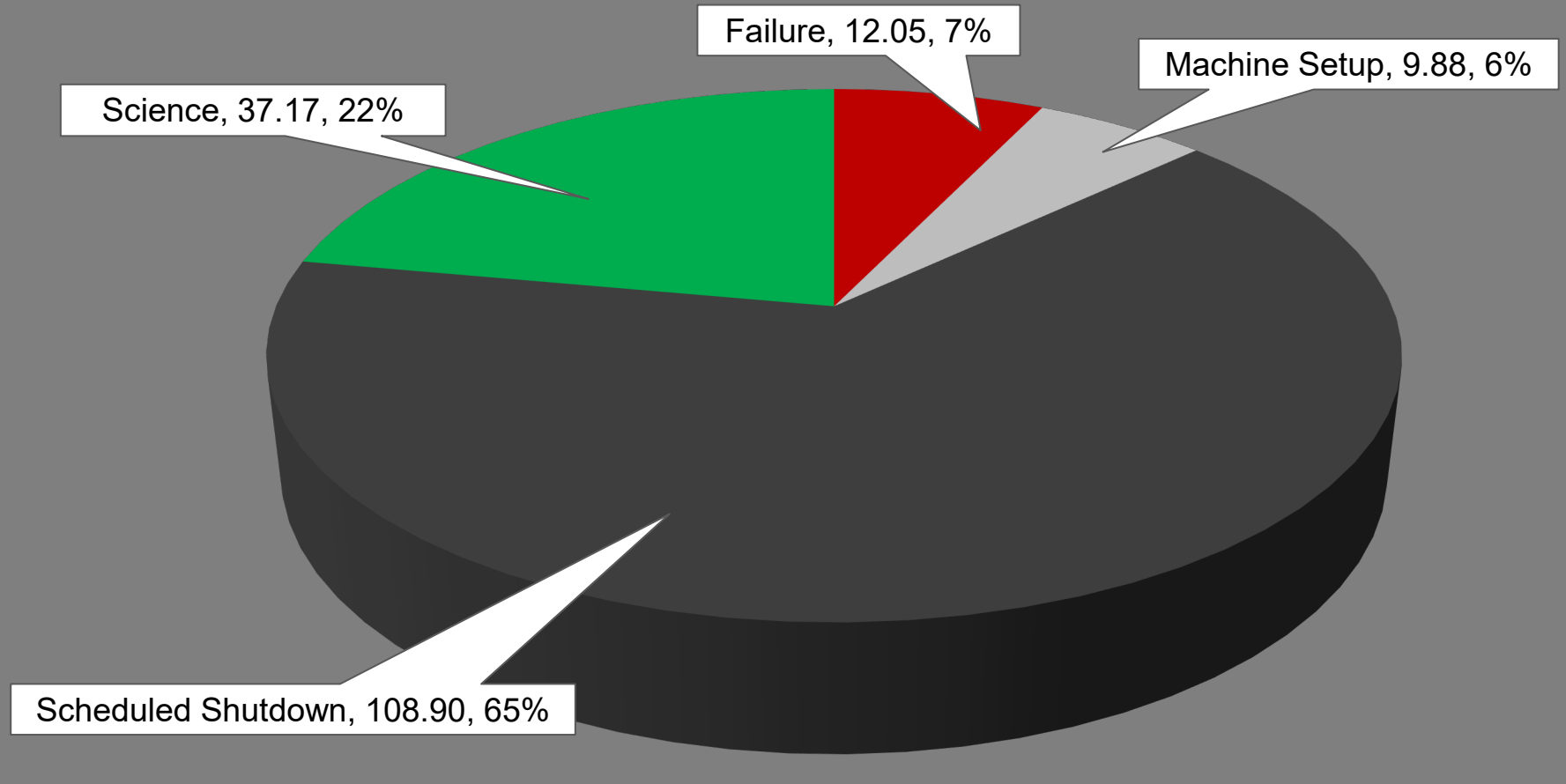
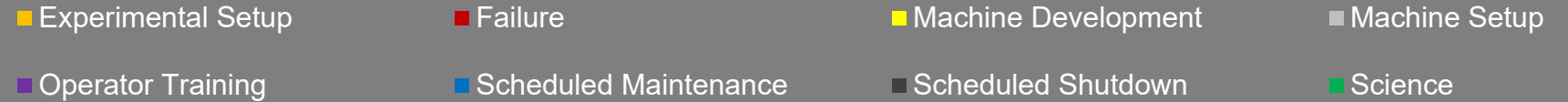
NSRL: multiple users and setups last week.

This week's **user pending**, due to EBIS failure.

7 EBIS ions in use.
(Si, Nb, Ag, Tb, Ta, Bi, Au)

Running 24-C schedule since 22 May. Schedule posted, **details updating**; beam into November.

NSRL Hours



Notes from Operations

Notable failures (>1 hr)

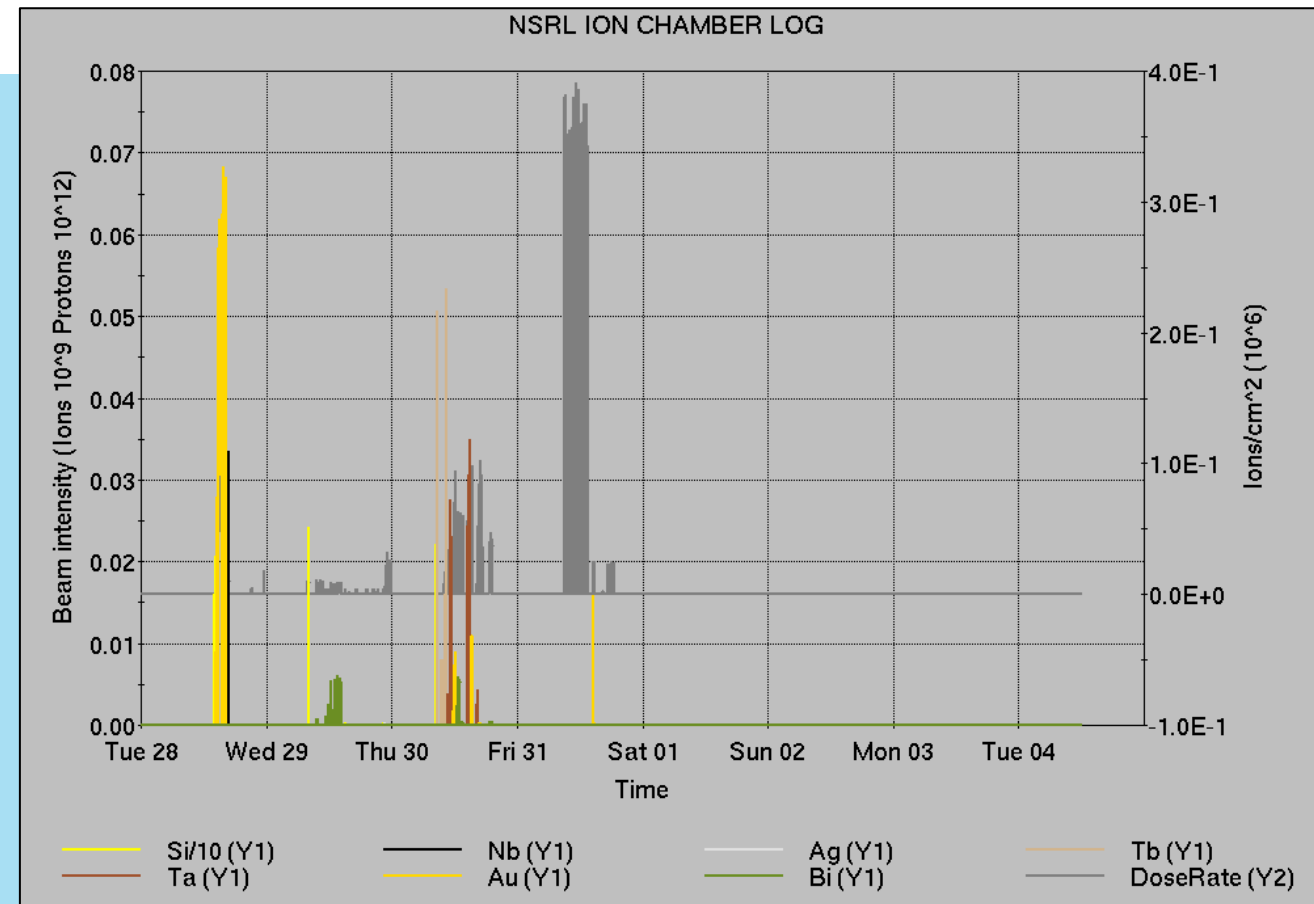
- Recovery from last week's power outage; delayed dump in RHIC
- Power dip Friday evening, affecting multiple systems across all accelerators
- EBIS Linac failure, ongoing
- Loss monitor beam aborts (9x), ramp tuning
- RF YA2 QEI failure, access to replace; trip to Safe Access from VODH system
- Blue QLI at accramp, beam induced
- VODH and Cryo comm failures, lead flow trips
- Yellow snake quench, FEC memory errors
- Booster F4 BLW failure, fuse replaced

Other notes

- Linac H⁻ source #1 off, ongoing; source #2 in use
- AGS cold snake ramping slower; preferred at zero due to LHe usage
- Permit interlocks
- VODH intermittent communication failures; Cryo isolation system disabled
- Various other trips, resets, repairs behind stores...



92+ lines of failure/resets logged in total



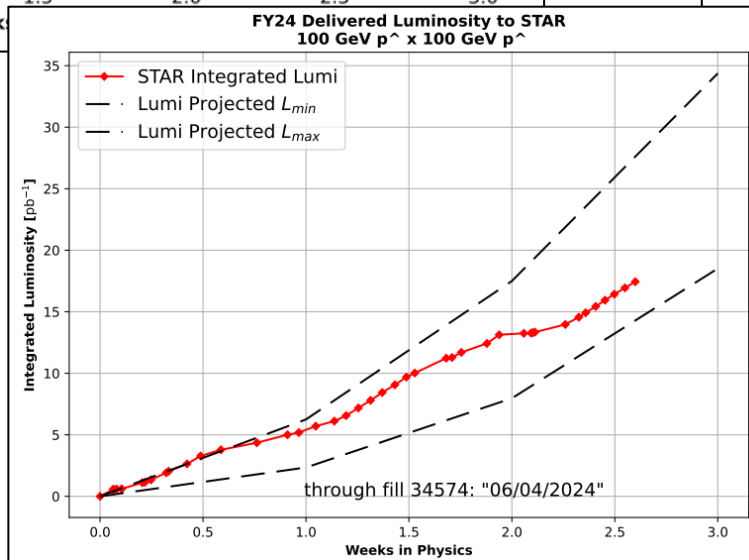
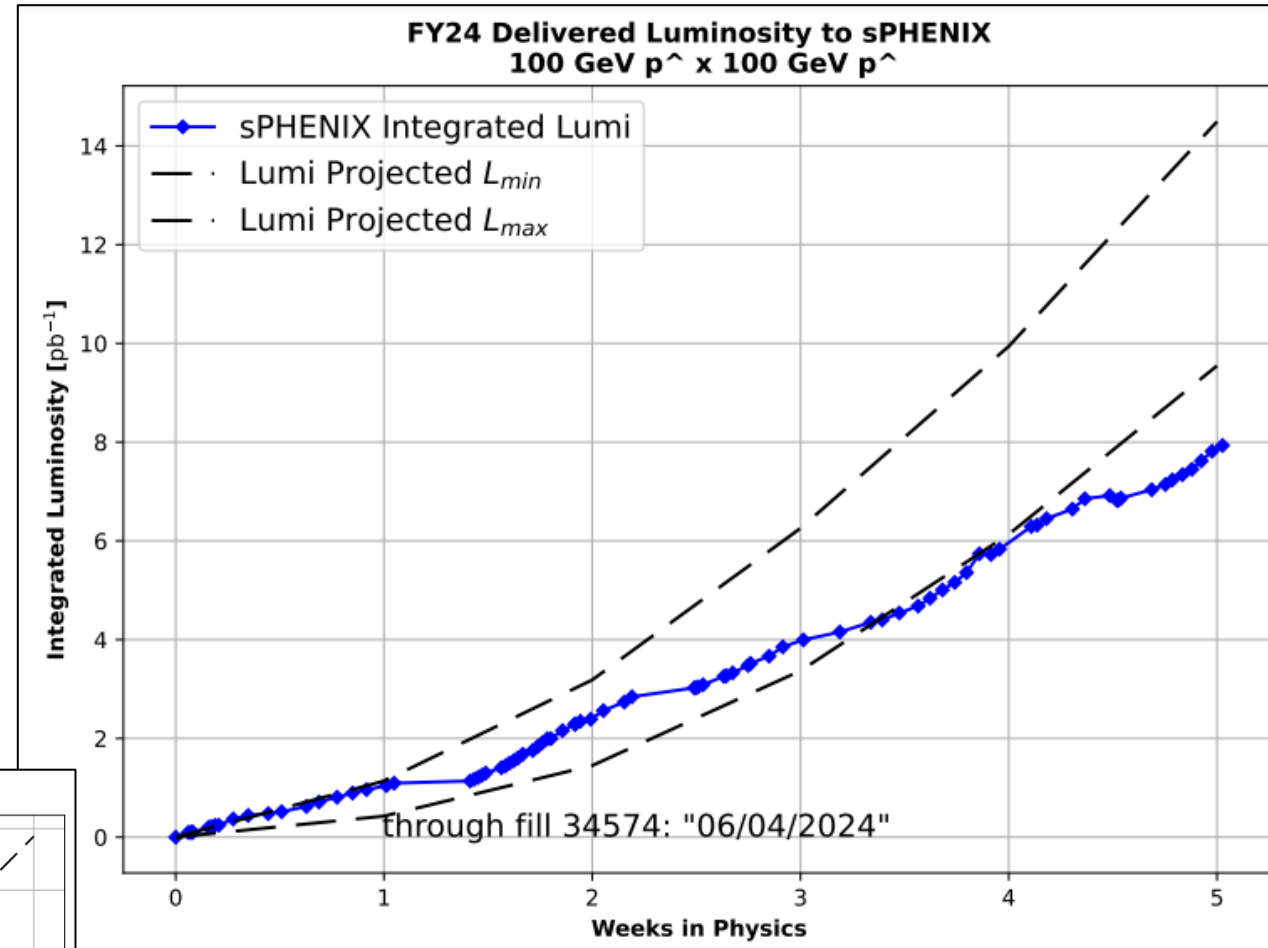
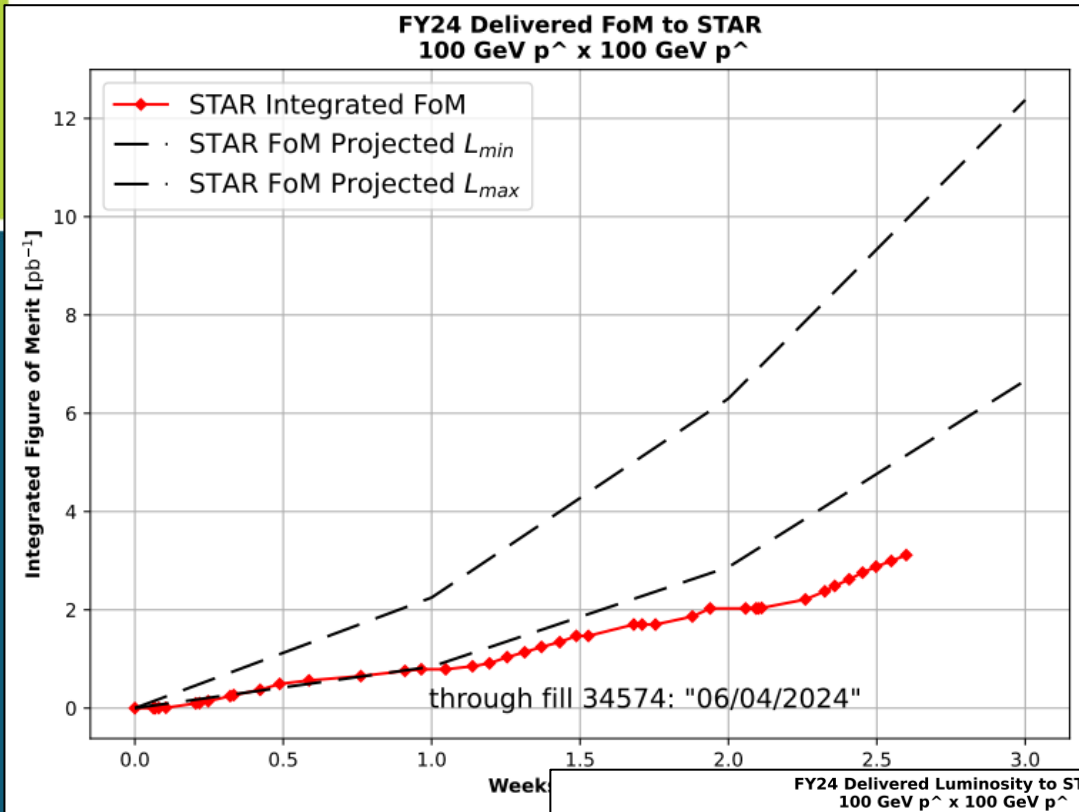
	Linac	Tandem	EBIS	Booster	AGS	ATR	RHIC	ERL	Other	Total
Total	2 (2)	3 (255)	6 (4)	10 (11)	4 (9)	7 (0)	14 (14)	0 (0)	21 (11)	67 (306)
RF	0 (0)	0 (0)	0 (0)	1 (0)	1 (0)	0 (0)	0 (0)	0 (0)	14 (3)	16 (3)
PS	1 (0)	1 (223)	6 (4)	1 (0)	2 (2)	0 (0)	5 (11)	0 (0)	0 (1)	16 (241)
Vacuum	0 (2)	2 (30)	0 (0)	4 (10)	0 (0)	0 (0)	1 (2)	0 (0)	0 (5)	7 (49)
Inst	0 (0)	0 (2)	0 (0)	0 (0)	0 (2)	7 (0)	1 (1)	0 (0)	4 (2)	12 (7)
Other	1 (0)	0 (0)	0 (0)	4 (1)	1 (5)	0 (0)	7 (0)	0 (0)	3 (0)	16 (6)

Double digits...

Reminder from Operations

- MCR continues Operations for:
 - BLIP – continues through 14 June.
 - NSRL user running scheduled Mon-Sat this week (**pending EBIS repairs**) and next with additional make-up time TBD.
 - AGS/Booster polarized proton setup continues, additional to RHIC physics.
 - **Polarized proton setup curtailed due to AGS cold snake failure.**
 - Setting up multiple (proton) AGS PPM Users; **extraction for split/merge cycle pending**
 - Injector **Au, h setup as yet untested.**
 - Skew quad **testing continues** as beam time allows.
 - RHIC beam for Physics stores.
 - Other MD, Maintenance, APEX as noted in schedule
- **RHIC Tunnel sweeps remain under ODH-1 restrictions.**
- CHECK AND EDIT YOUR OWN CONTACT INFO
 - <http://directory.pbn.bnl.gov/>
- CHECK YOUR CALLIN LIST: **WCC** and **ECP** updates needed
 - https://www.cadops.bnl.gov/Operations/personnel/call_in_lists/
 - Note: **Core Electrical contacts listed/managed on ESSHQ callin list**
https://www.cadops.bnl.gov/Operations/personnel/call_in_lists/call_in_list.php?group=esshq

Preliminary delivered Luminosity, Figure of Merit (LP²) data for RHIC



Courtesy R. Terheide

Availability: RHIC Run-24

