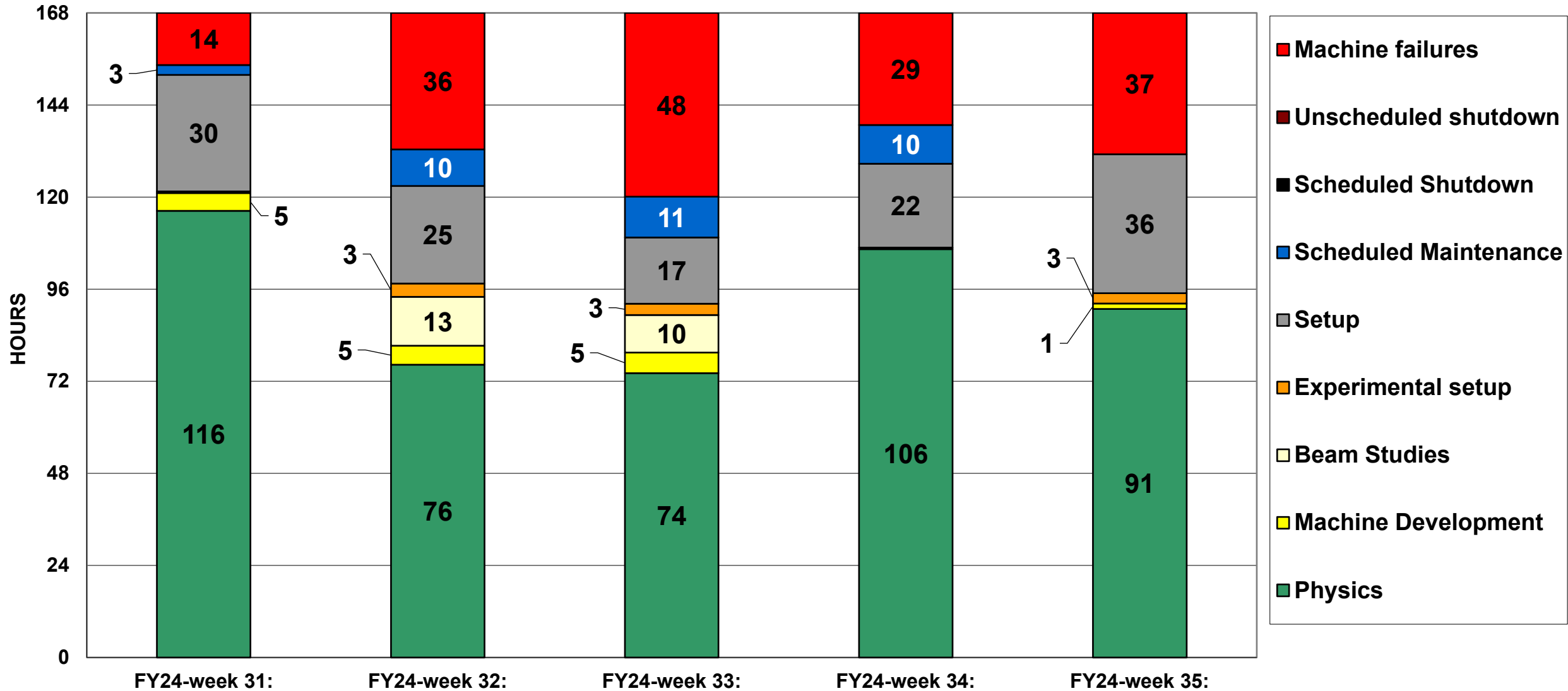
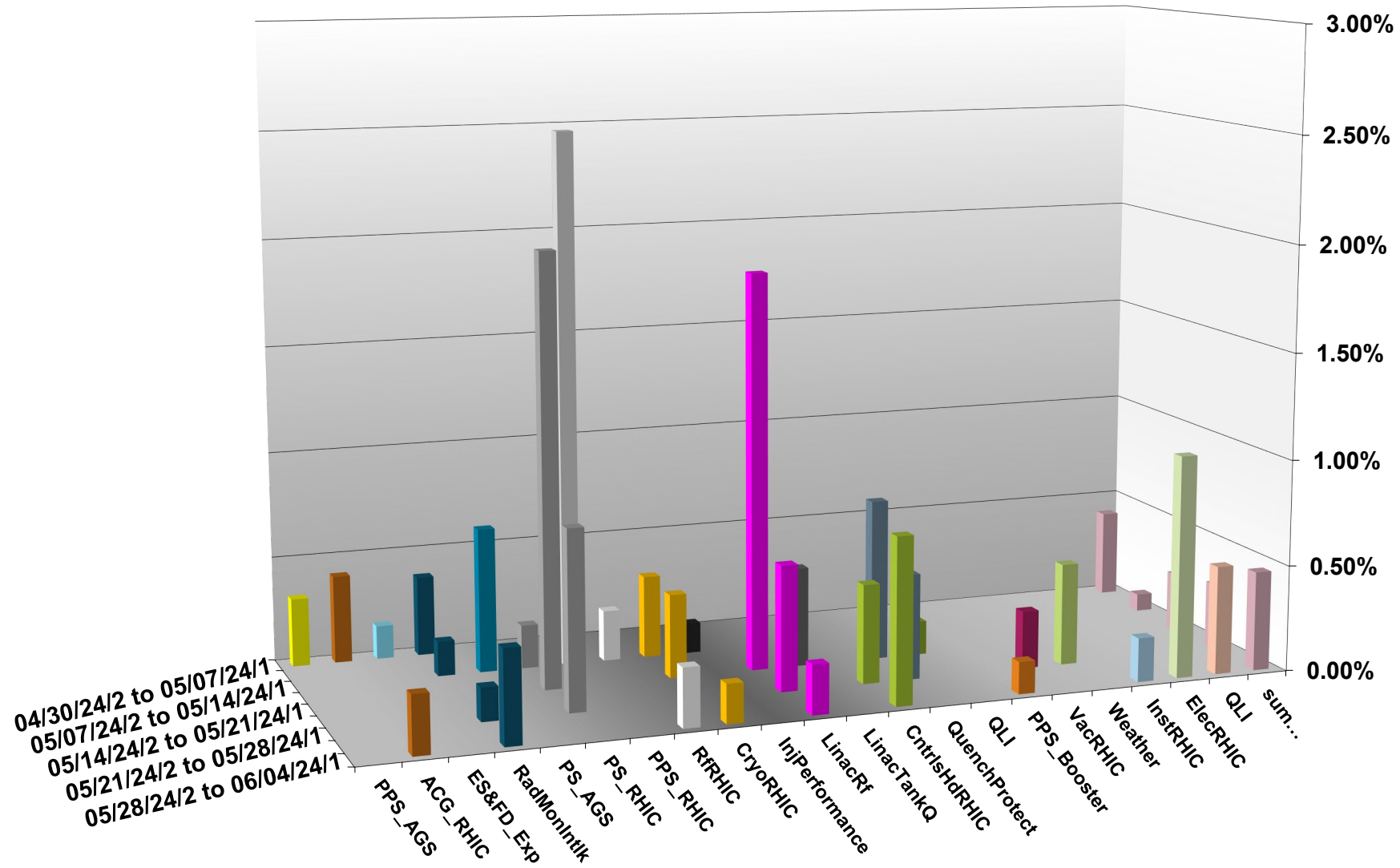


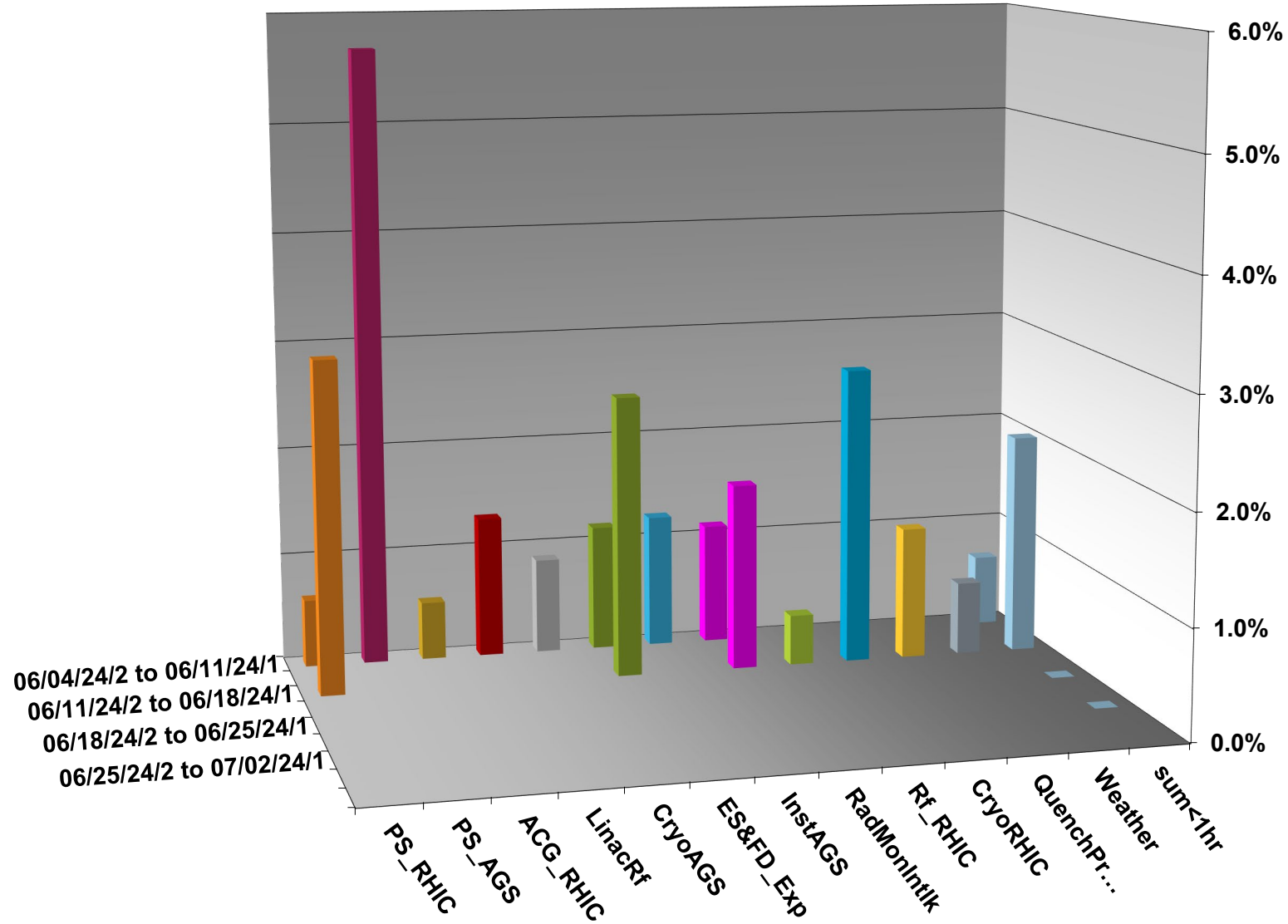
C-AD ACTIVITY MAY 2024



INTEGRATED FAILURES (GREATER THAN ONE HOUR) BY SYSTEM -- MAY 2024



INTEGRATED FAILURES (GREATER THAN ONE HOUR) BY SYSTEM - JUNE 2024



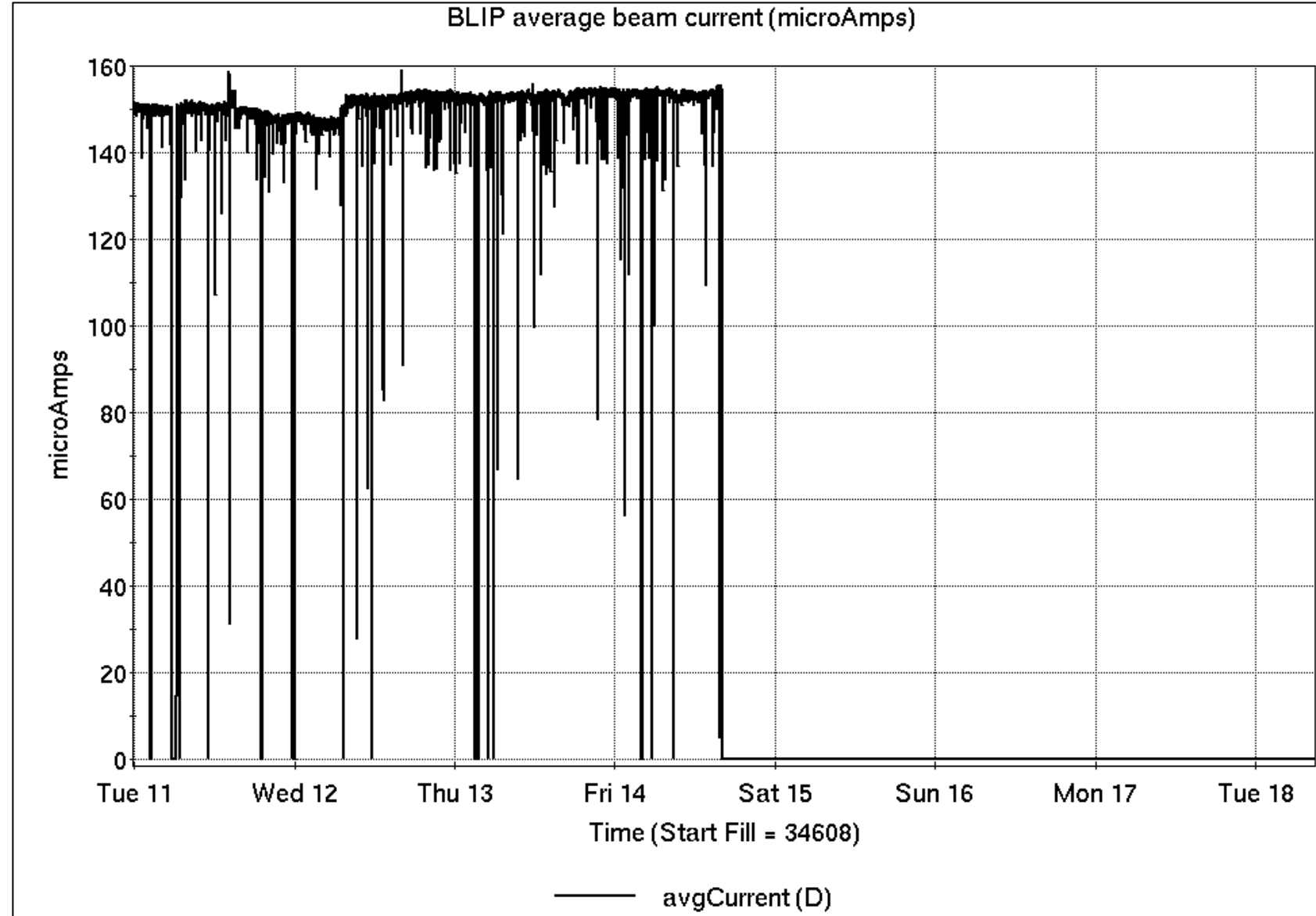
Operations for BLIP

6/11-18/2024:

200 MeV Th target production concluded Friday. (source #2)
117 MeV La run starts today.

- 79.13 hr Production
- 0.87 hr Failure

Availability: 98.9%



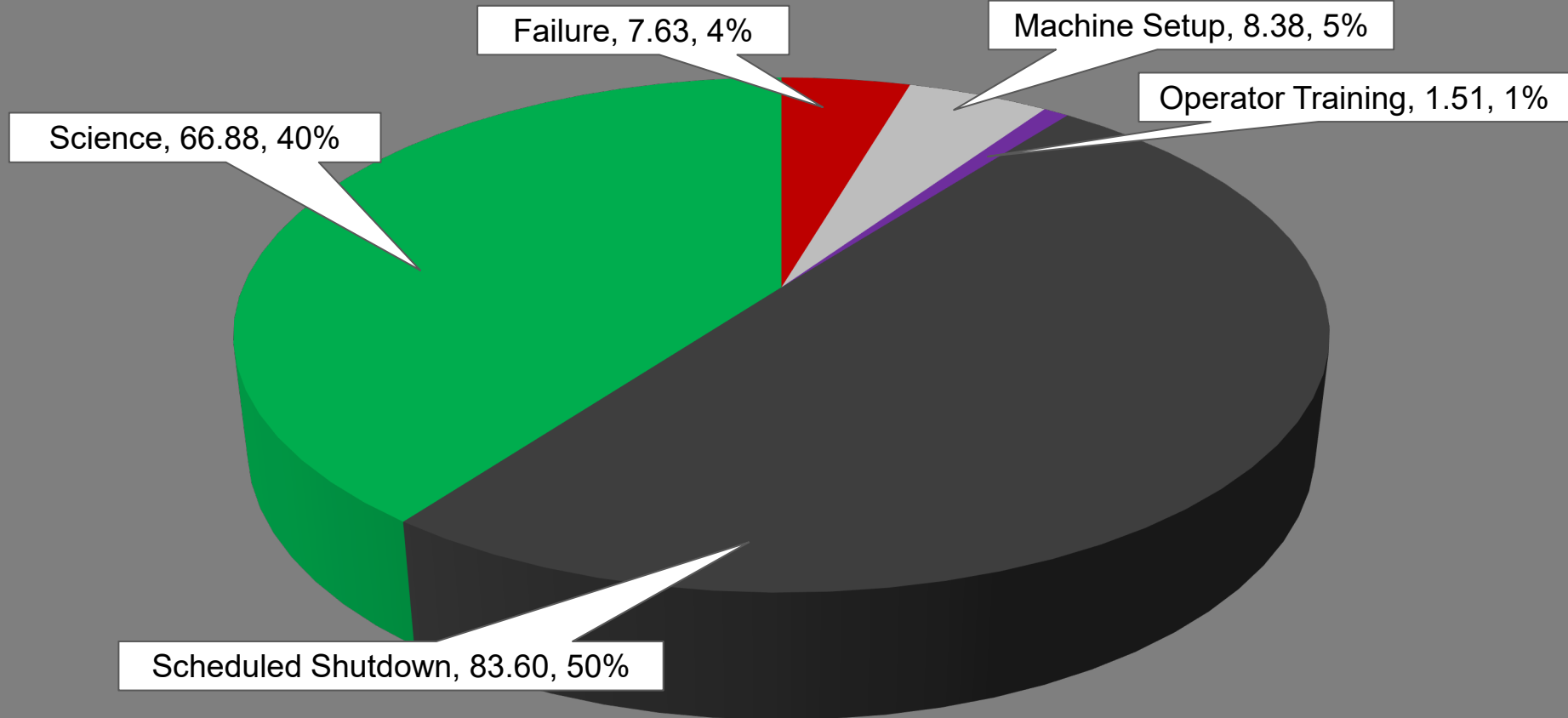
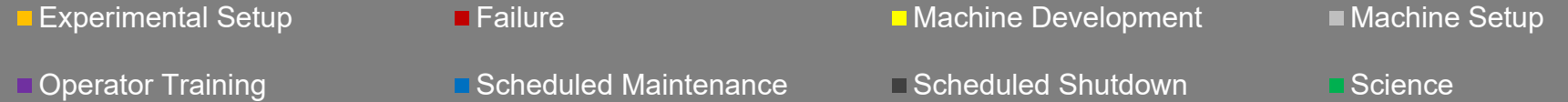
NSRL activity past week: 6/11-18/2024 (as of 0800)

NSRL: same user last week and this week, MDA.

9 EBIS ions in use.
(Si, Ti, Fe, Nb, Ag, Tb, Ta, Bi, Au)

Running 24-C schedule since 22 May. Schedule posted, **details updating, including Tandem beam;** beam into November.

NSRL Hours



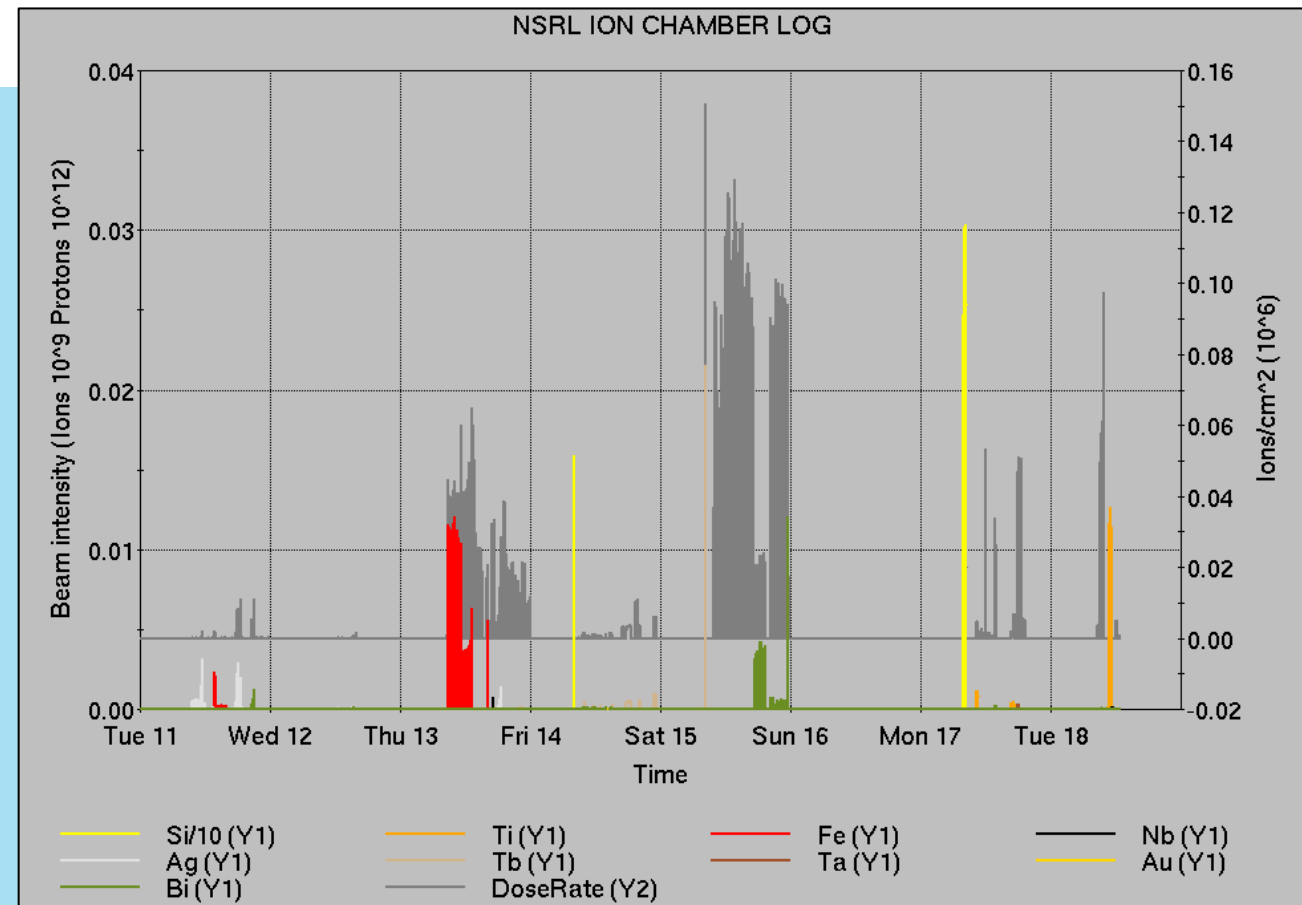
Notes from Operations

Notable failures (>1 hr)

- Cryo PLC comm failures, lead flow interlocks (3x)
- CeC, STAR, sPHENIX access for various failures
- BA1 RF repair, access required
- yo4-tq6-ps replacement
- QLI, yi12-dh0 trip
- y6-q89 PS work
- Y10 quench protection switch contactor repairs
- Weather stand-down for storms
- 10a-blm2 FEC failure, chassis replaced
- D6 septum PS trips, repairs for overtemp and other issues

Other notes

- Various Linac Mod trips, resets
- Loss monitor interlocks, RHIC beam aborts (15x)
- Other misc EBIS, injector, beamline trips



Setup	Filter	Linac	Tandem	EBIS	Booster	AGS	ATR	RHIC	ERL	Other	Total	Help
Total		1 (3)	20 (77)	1 (4)	5 (12)	8 (9)	1 (0)	6 (15)	0 (0)	11 (20)	53 (140)	
RF		0 (0)	0 (0)	0 (0)	2 (0)	2 (0)	0 (0)	0 (0)	0 (0)	1 (10)	5 (10)	
PS		1 (0)	20 (43)	1 (4)	0 (0)	2 (2)	0 (0)	0 (11)	0 (0)	0 (1)	24 (61)	
Vacuum		0 (3)	0 (32)	0 (0)	0 (11)	0 (0)	0 (0)	2 (2)	0 (0)	5 (5)	7 (53)	
Inst		0 (0)	0 (2)	0 (0)	1 (0)	4 (2)	1 (0)	0 (0)	0 (0)	2 (4)	8 (8)	
Other		0 (0)	0 (0)	0 (0)	2 (1)	0 (5)	0 (0)	4 (2)	0 (0)	3 (0)	9 (8)	

Double digits...

Reminder from Operations

- MCR continues Operations for:
 - BLIP – resumes today, through 21 June.
 - NSRL user scheduled to run Mon-Fri (except holiday) this week and next.
 - AGS/Booster polarized proton setup continues, additional to RHIC physics.
 - Polarized proton setup limited by AGS cold snake trouble.
 - Injector Au, h setup as yet untested.
 - Skew quad testing continues as beam time allows.
 - RHIC beam for Physics stores.
 - Other MD, Maintenance, APEX as noted in schedule
- RHIC Tunnel sweeps remain under ODH-1 restrictions.
- CHECK AND EDIT YOUR OWN CONTACT INFO
 - <http://directory.pbn.bnl.gov/>
- CHECK YOUR CALLIN LIST: WCC and ECP updates needed
 - https://www.cadops.bnl.gov/Operations/personnel/call_in_lists/
 - Note: Core Electrical contacts listed/managed on ESSHQ callin list
https://www.cadops.bnl.gov/Operations/personnel/call_in_lists/call_in_list.php?group=esshq

Availability: RHIC Run-24

