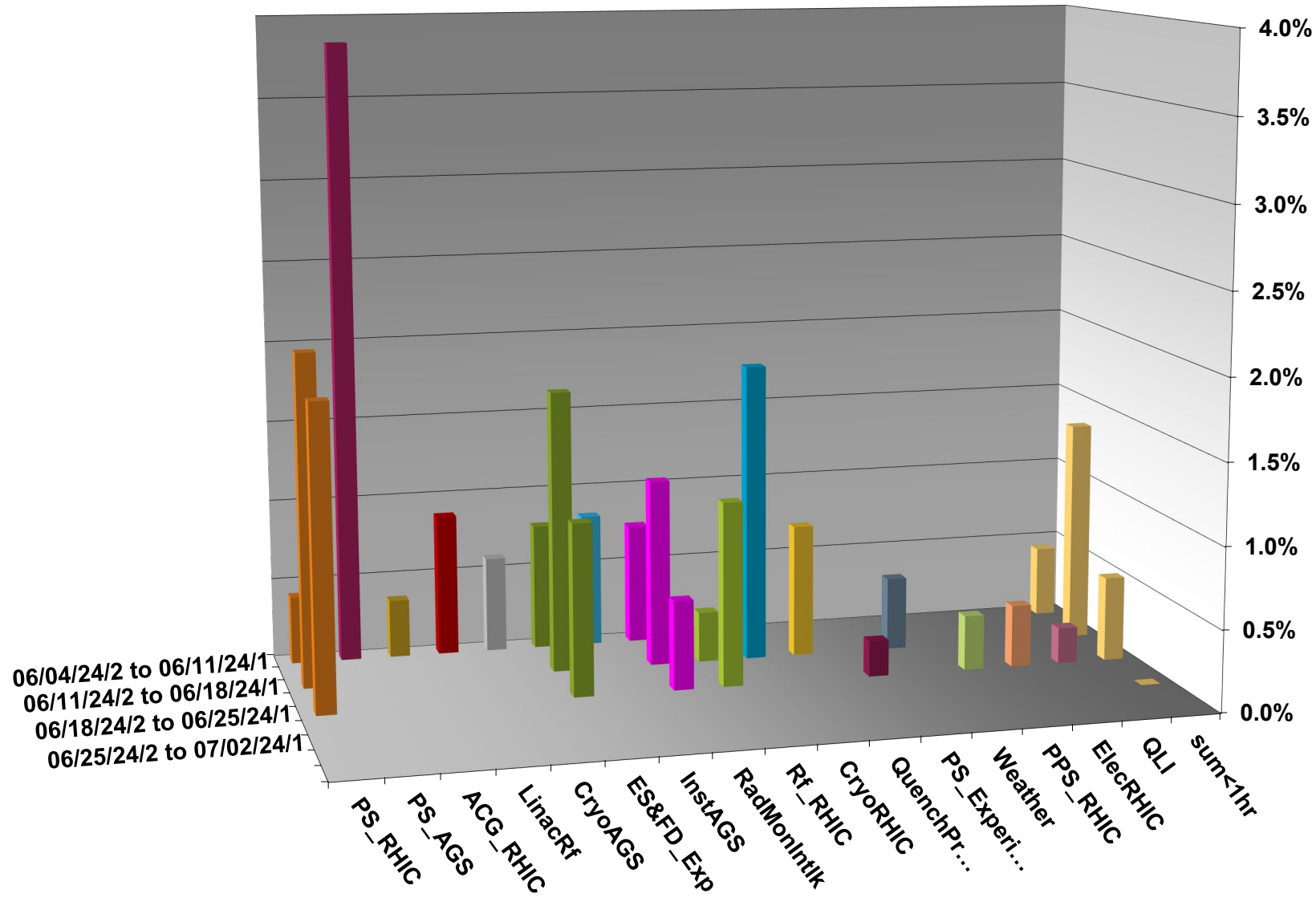


INTEGRATED FAILURES (GREATER THAN ONE HOUR) BY SYSTEM - JUNE 2024



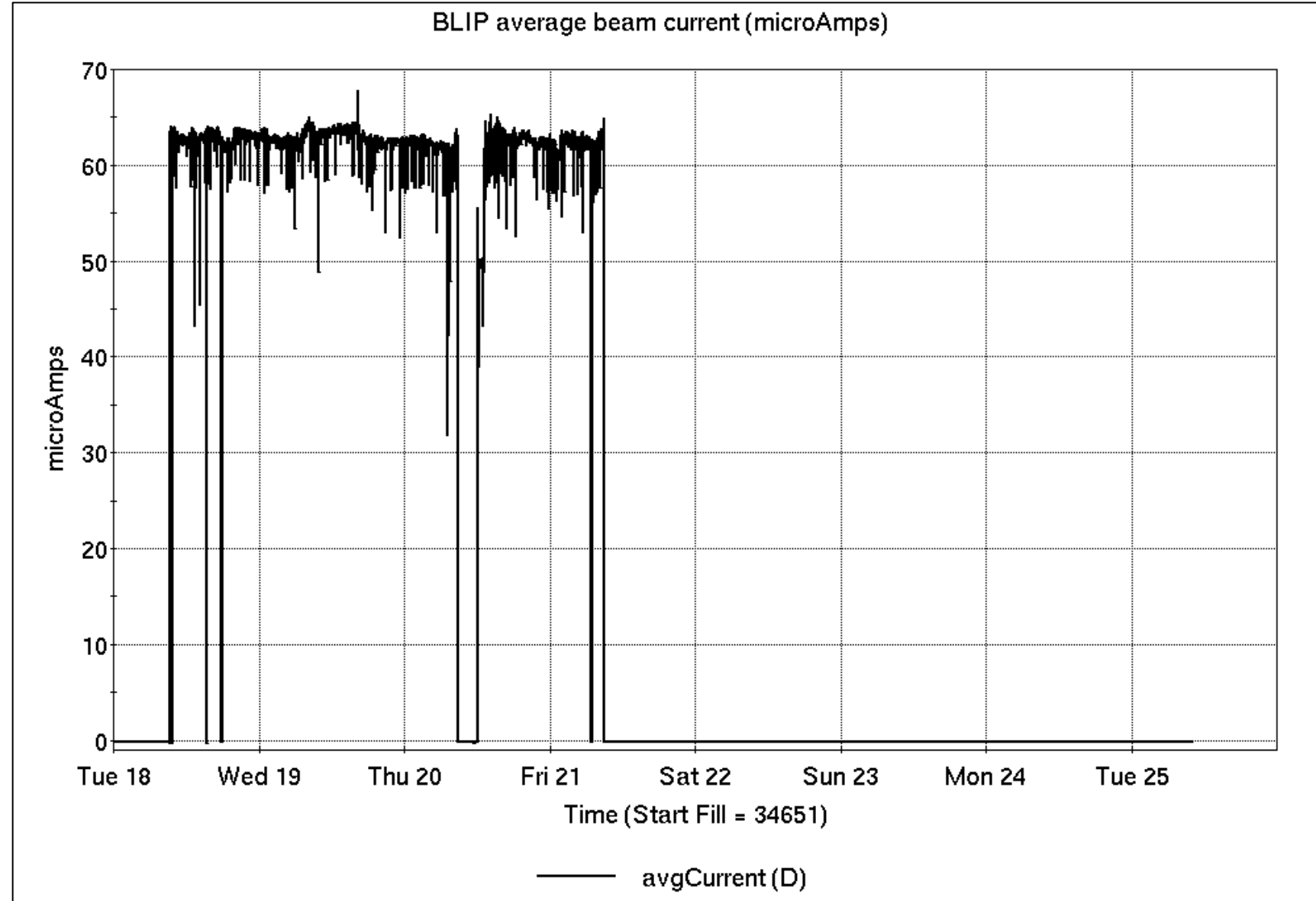
Operations for BLIP

6/18-25/2024:

117 MeV La target production began Tuesday, concluded Friday.

- 67.83 hr Production
- 0.42 hr Setup
- 3.48 hr Failure

Availability: 95.1%



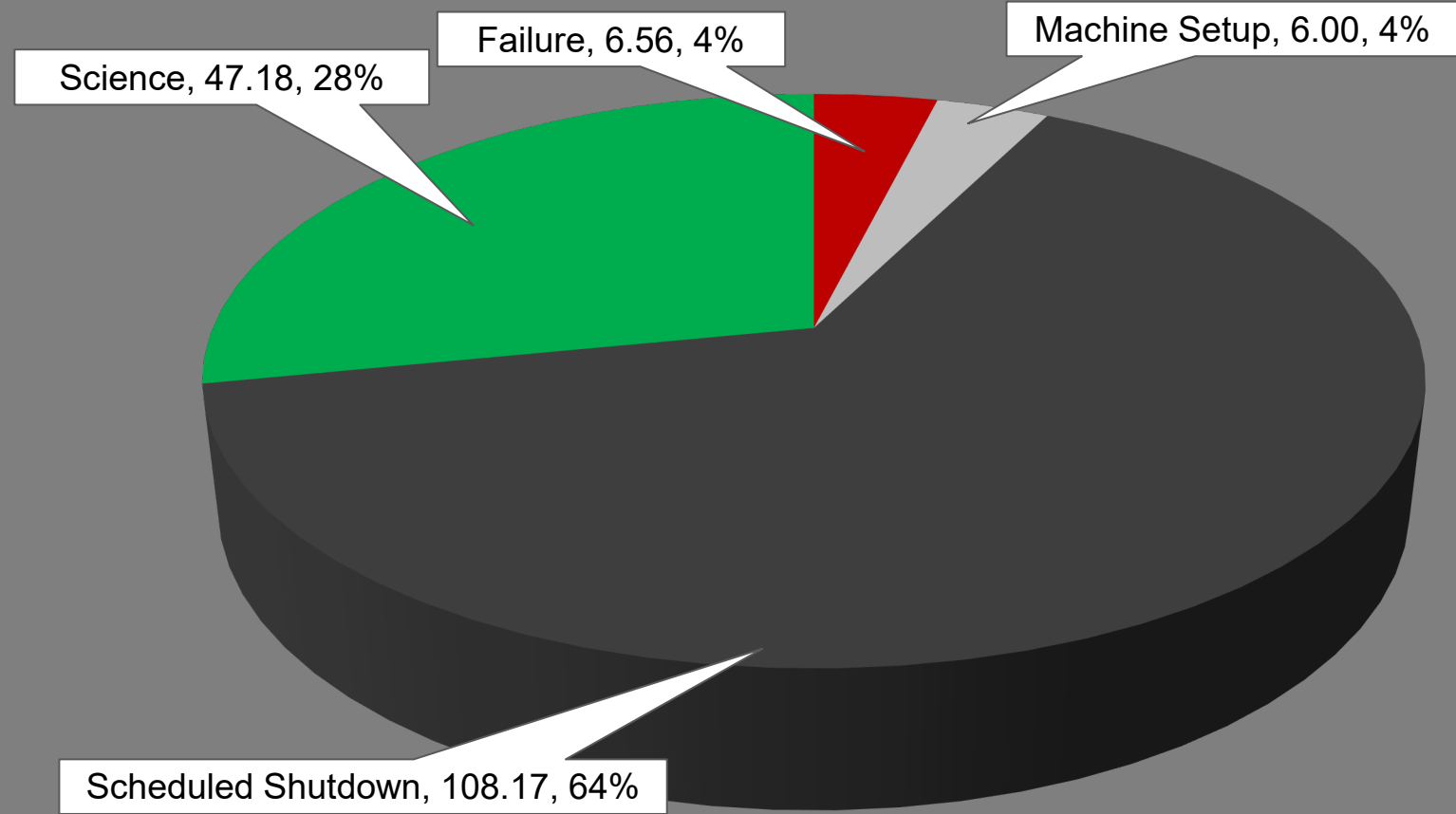
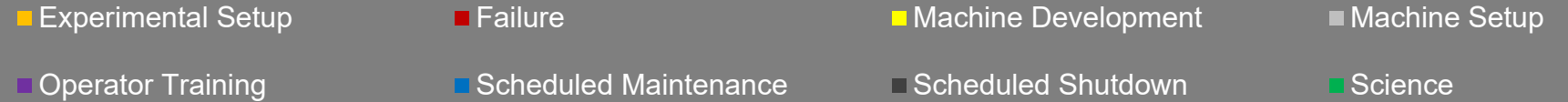
NSRL activity past week: 6/18-25/2024 (as of 0800)

NSRL: no beam on holiday, multiple users.

6 EBIS ions in use.
(Si, Fe, Nb, Ag, Bi, Au)

Running 24-C schedule since 22 May. Schedule posted, **details updating, including Tandem beam development**; beams & users into November.

NSRL Hours



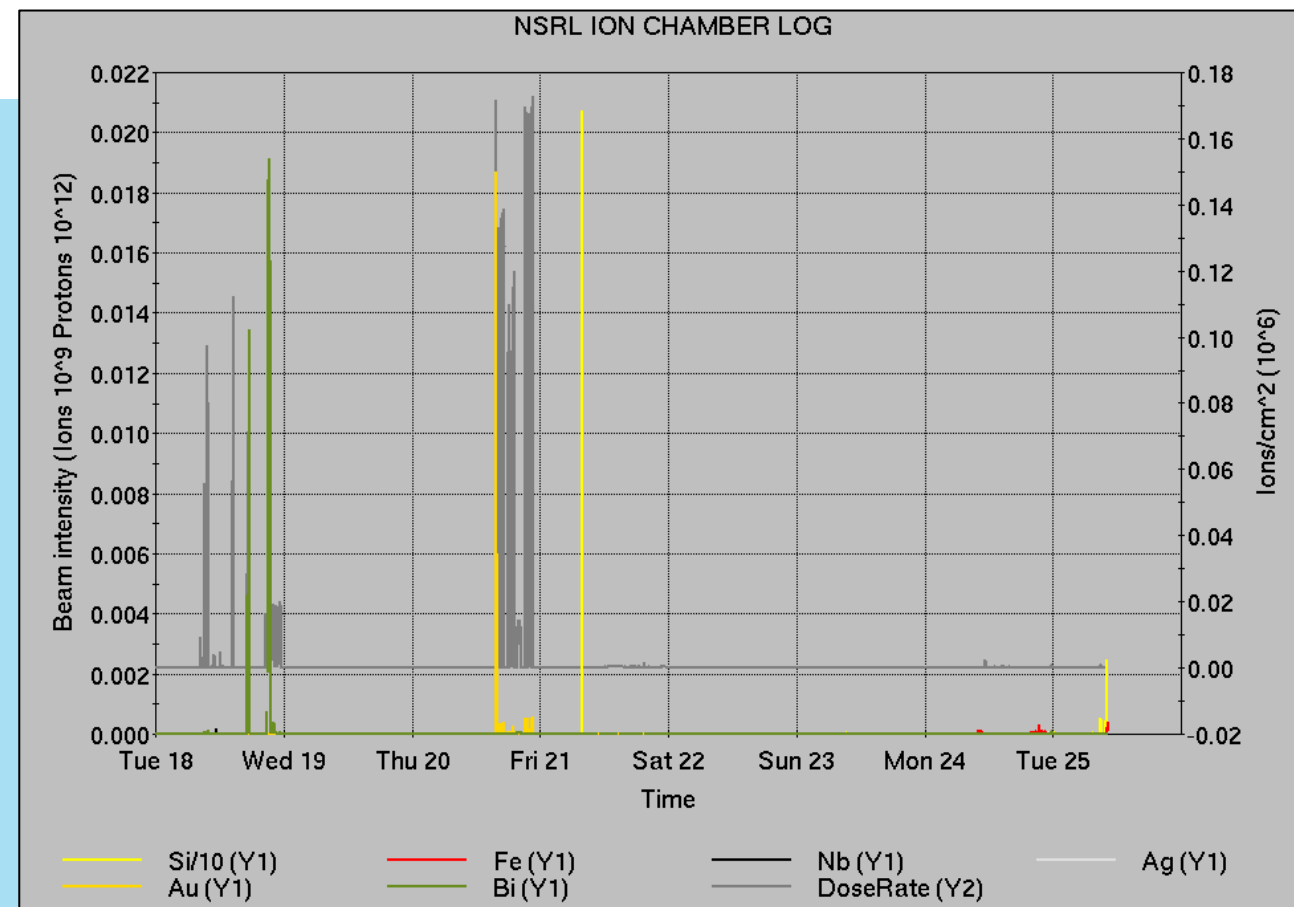
Notes from Operations

Notable failures (>1 hr)

- Feeder electrical work, transfer switch failure, UPS depletion, ACS failure in all injector primary beam areas along with other system failures.
- Accesses for experiment failures.
- Power dip, affecting experiments, cold snake, other systems.
- Blue main dipole PS failure, cycled breaker.
- RHIC BA1 RF failure, access for QEI replacement.
- yi11-tq5 PS failure, buffer card replaced.
- bi5-tv16 PS failure, excluded from ramp.
- AGS E20 warm snake PS failure, blower motor replacement.

Other notes

- Various Linac Mod trips, resets
- Loss monitor interlocks, RHIC beam aborts (9x)
- Beam position interlocks, RHIC beam aborts (2x) (BA2 RF trip; bad BPM)
- Various Booster RF trips/resets
- AGS vacuum PS failure, inhibits RF.
- utv4 magnet water leak
- Other misc EBIS, injector, beamline trips



	Linac	Tandem	EBIS	Booster	AGS	ATR	RHIC	ERL	Other	Total
Total	3 (2)	1 (117)	2 (4)	9 (9)	15 (13)	3 (0)	8 (20)	0 (0)	27 (19)	68 (184)
RF	0 (0)	0 (0)	0 (0)	4 (0)	2 (0)	0 (0)	0 (0)	0 (0)	8 (10)	14 (10)
PS	1 (0)	1 (84)	2 (4)	0 (0)	8 (2)	0 (0)	2 (11)	0 (0)	3 (1)	17 (102)
Vacuum	0 (2)	0 (31)	0 (0)	0 (8)	1 (4)	0 (0)	1 (7)	0 (0)	8 (5)	10 (57)
Inst	0 (0)	0 (2)	0 (0)	0 (0)	1 (2)	3 (0)	1 (0)	0 (0)	3 (3)	8 (7)
Other	2 (0)	0 (0)	0 (0)	5 (1)	3 (5)	0 (0)	4 (2)	0 (0)	5 (0)	19 (8)

Double digits...

Reminder from Operations

- MCR continues Operations for:
 - BLIP – resumes Friday, through 9 July.
 - NSRL user scheduled to run Mon-Fri this week and next (except holiday).
 - AGS/Booster setups continue, additional to RHIC physics.
 - Injector **Au setup as yet untested**.
 - Injector h setup in progress, **accelerated in AGS**.
 - Skew quad **testing, other polarized beam setups continue** as beam time allows.
 - Tandem **d setup for NSRL pending**.
 - RHIC beam for Physics stores.
 - Other MD, Maintenance, APEX as noted in schedule
- **RHIC Tunnel access, sweeps remain under ODH-1 restrictions.**
- CHECK AND EDIT YOUR OWN CONTACT INFO
 - <http://directory.pbn.bnl.gov/>
- CHECK YOUR CALLIN LIST: **WCC** and **ECP** updates needed
 - https://www.cadops.bnl.gov/Operations/personnel/call_in_lists/
 - Note: **Core Electrical contacts listed/managed on ESSHQ callin list**
https://www.cadops.bnl.gov/Operations/personnel/call_in_lists/call_in_list.php?group=esshq

Availability: RHIC Run-24

