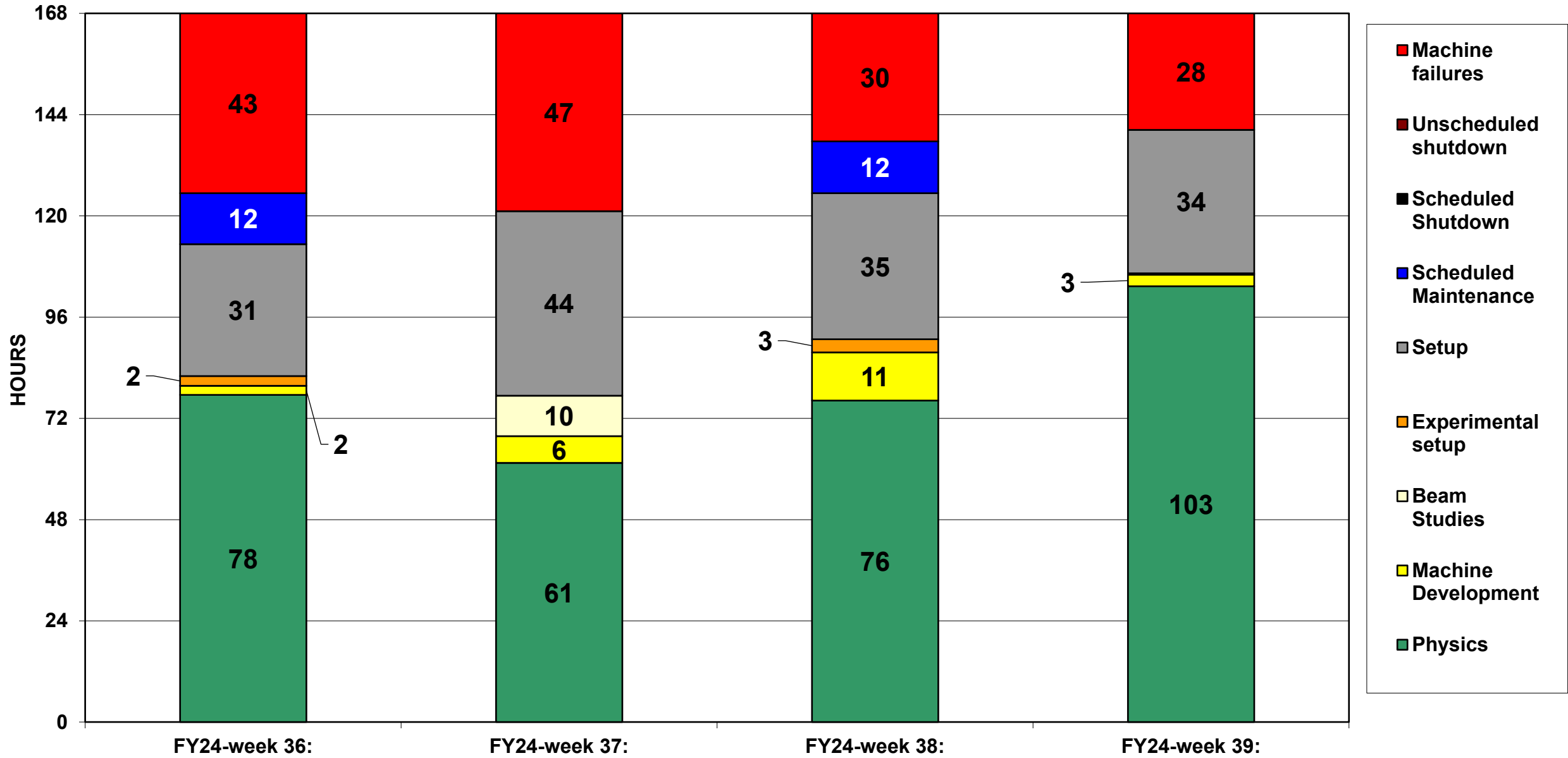
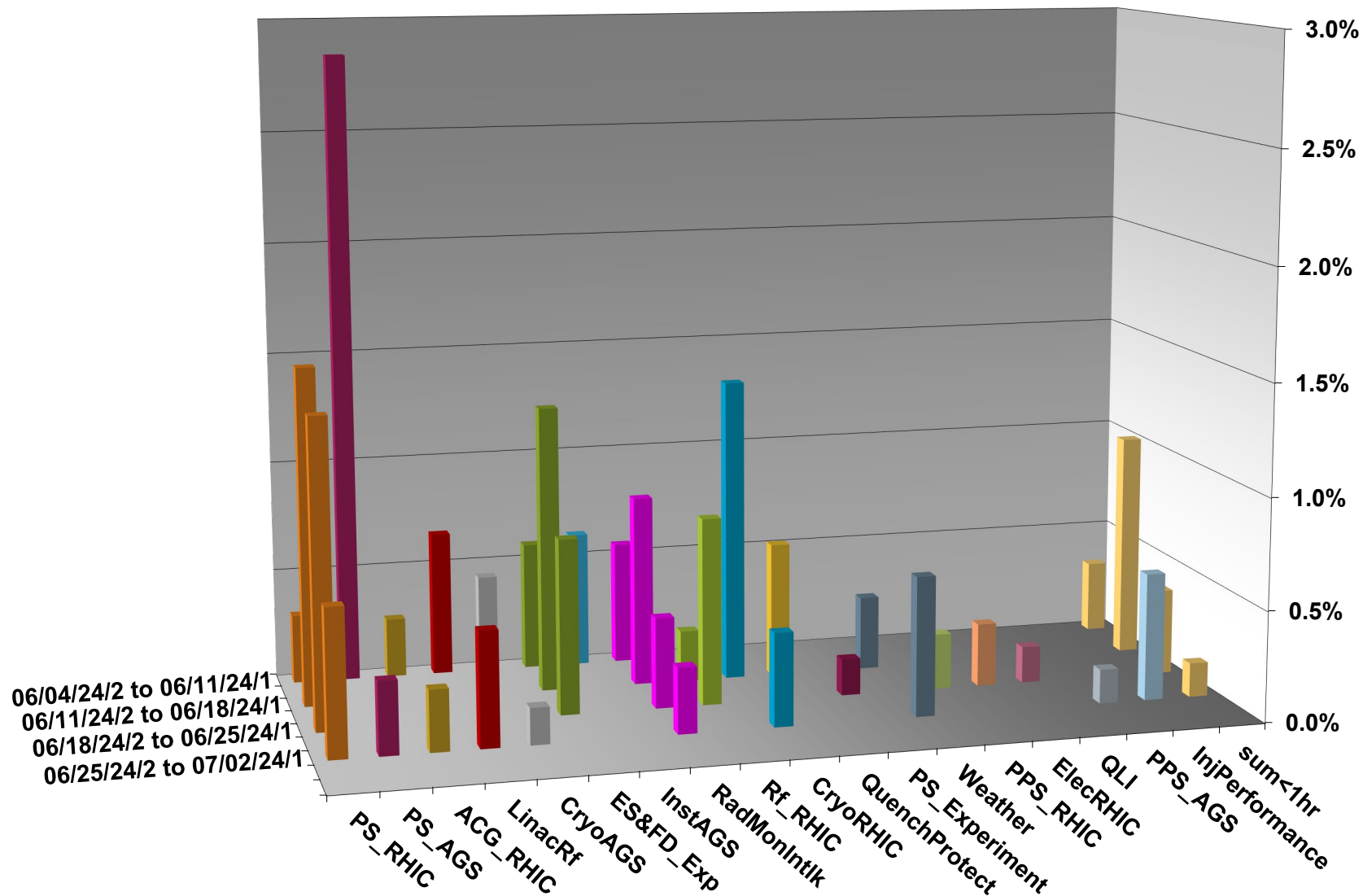


# C-AD ACTIVITY JUNE 2024



# INTEGRATED FAILURES (GREATER THAN ONE HOUR) BY SYSTEM - JUNE 2024



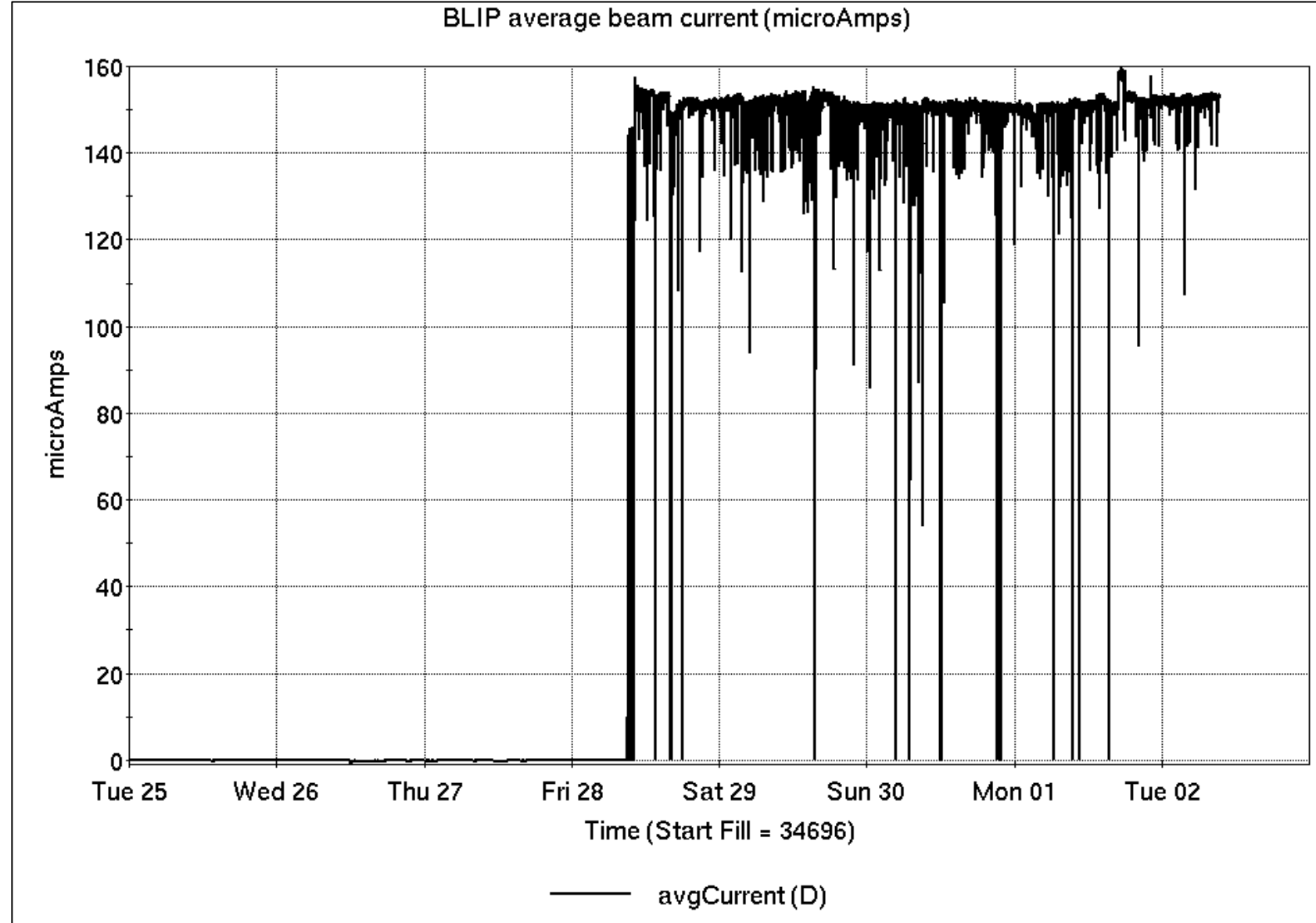
# Operations for BLIP

6/25-7/1/2024:

200 MeV Th target production began Friday and continues through the week.

- 93.12 hr Production
- 1.18 hr Setup
- 0.7 hr Failure

Availability: 99.3%



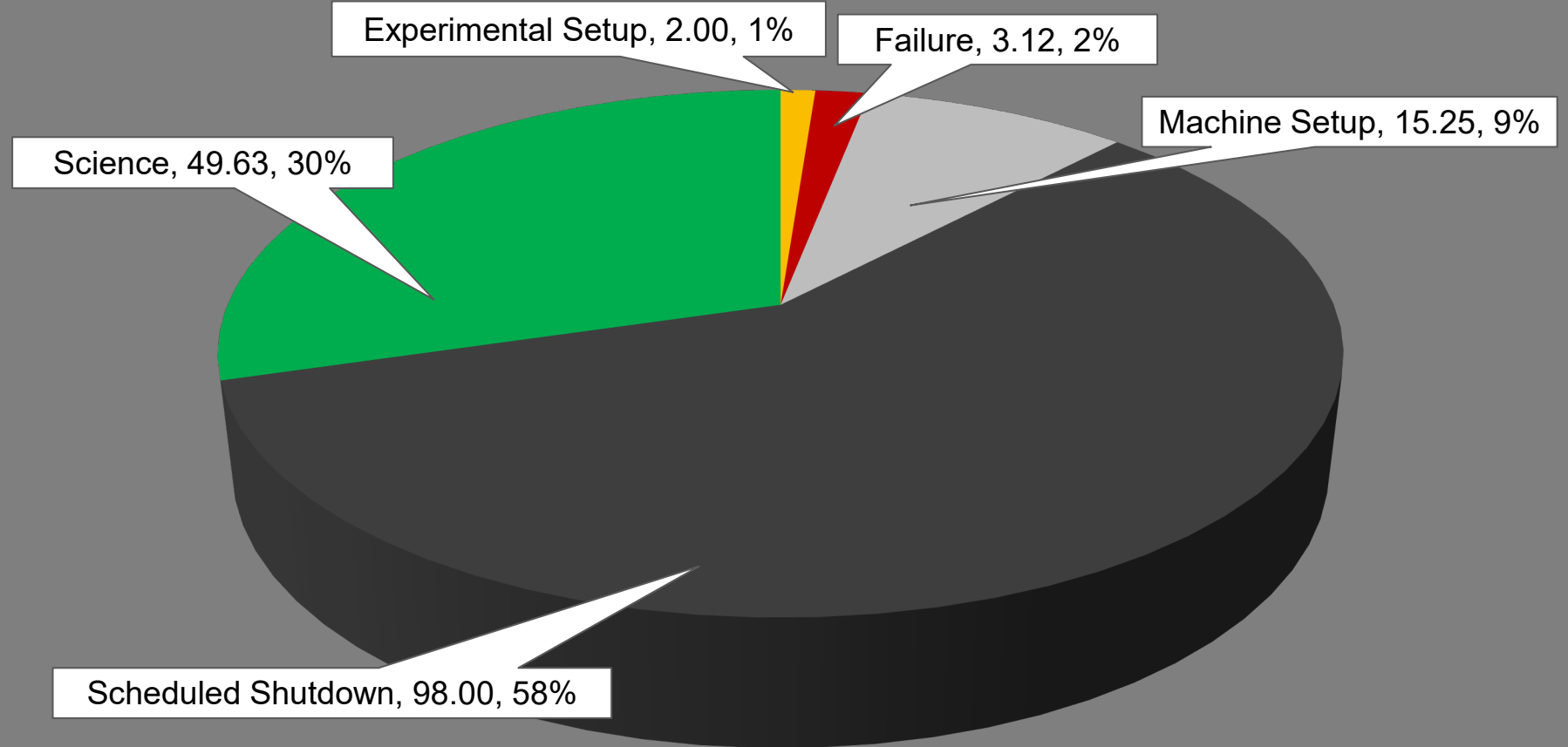
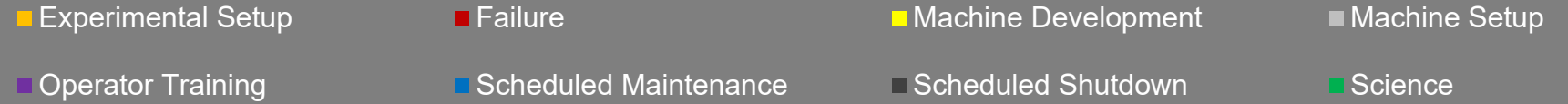
# NSRL activity past week: 6/25-7/2/2024 (as of 0800)

NSRL: no beam on holiday, multiple users.

Protons, 6 EBIS ions in use.  
(Si, Fe, Ag, Tb, Bi, Au)

Running 24-C schedule since 22 May. Schedule posted, **no users 6-21 July: Tandem d, EBIS Au beam development;** beams & users into November.

## NSRL Hours



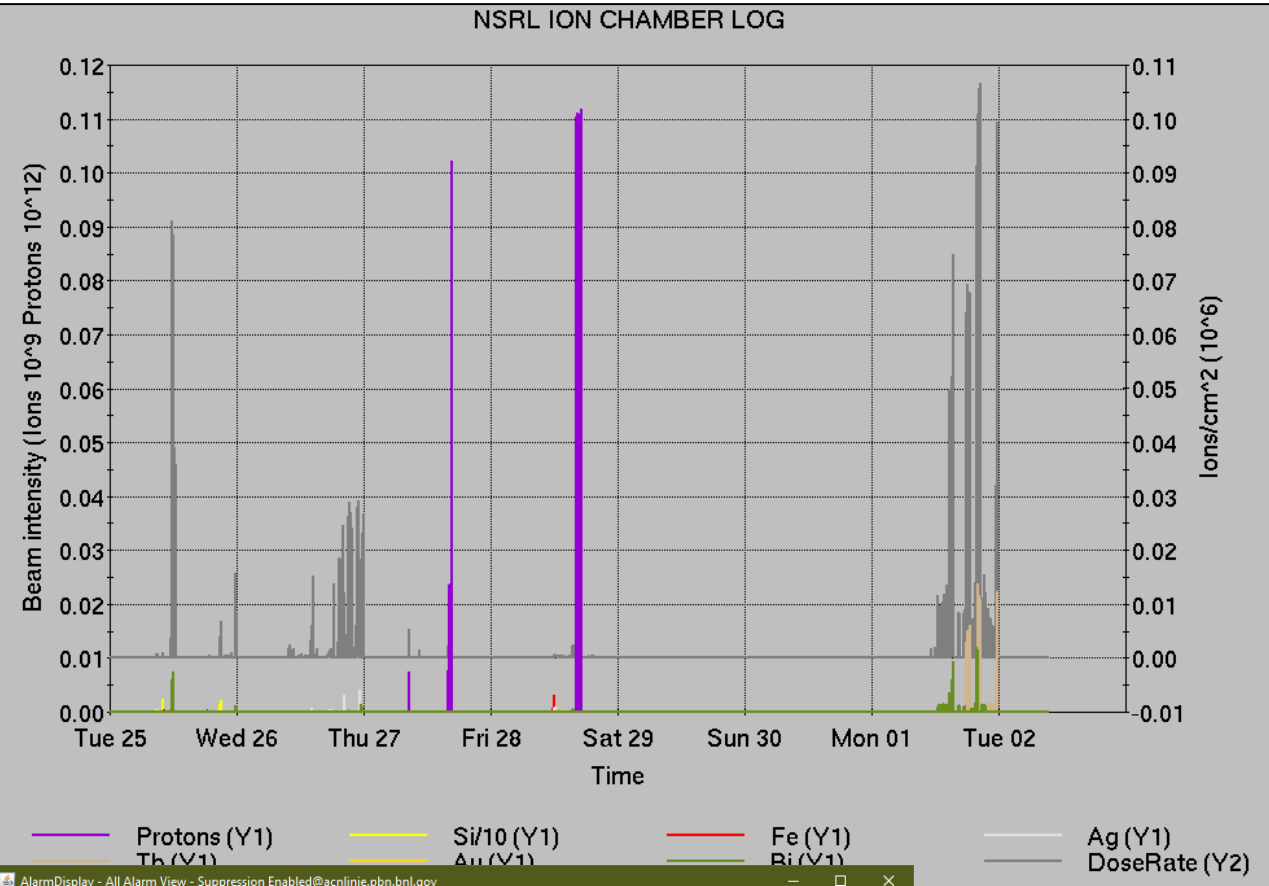
# Notes from Operations

## Notable failures (>1 hr)

- Cryo lead flow interlocks (2x), replaced HW in Yellow sector 11.
- AGS cold snake ramp problems (sPHENIX access concurrent to delay).
- Linac Mod 1 failure, 50kV PS fan replacement .
- Power dip, affecting many systems complex-wide. Subsequent EBIS, injector beam recovery was extensive.
- PASS system failures interlocked RHIC beam (2x)
- AGS E20 warm snake PS failure, additional blower motor work.
- RHIC yo1-tq6 PS failure/abort, current regulator card replaced.

## Other notes

- Weather stand-down
- Various Linac Mod, RFQ trips/resets
- Loss monitor interlocks, RHIC beam aborts (6x)
- Other misc EBIS, injector, beamline, RF trips. Some long repairs occur behind RHIC stores.



AlarmDisplay - All Alarm View - Suppression Enabled@acnlinje.pbn.bnl.gov

Setup	Filter	Linac	Tandem	EBIS	Booster	AGS	ATR	RHIC	ERL	Other	Total
Total		0 (2)	87 (33)	3 (4)	7 (9)	237 (9)	29 (0)	497 (19)	0 (0)	20 (19)	880 (95)
RF		0 (0)	0 (0)	0 (0)	0 (0)	2 (0)	0 (0)	0 (0)	0 (0)	6 (10)	8 (10)
PS		0 (0)	85 (7)	3 (4)	1 (0)	209 (2)	21 (0)	407 (11)	0 (0)	0 (1)	726 (25)
Vacuum		0 (2)	2 (26)	0 (0)	2 (8)	23 (0)	2 (0)	28 (7)	0 (0)	7 (5)	64 (48)
Inst		0 (0)	0 (0)	0 (0)	0 (0)	0 (2)	2 (0)	1 (0)	0 (0)	0 (3)	3 (5)
Other		0 (0)	0 (0)	0 (0)	4 (1)	3 (5)	4 (0)	61 (1)	0 (0)	7 (0)	79 (7)

Tue Jul 02 11:58:50 EDT 2024

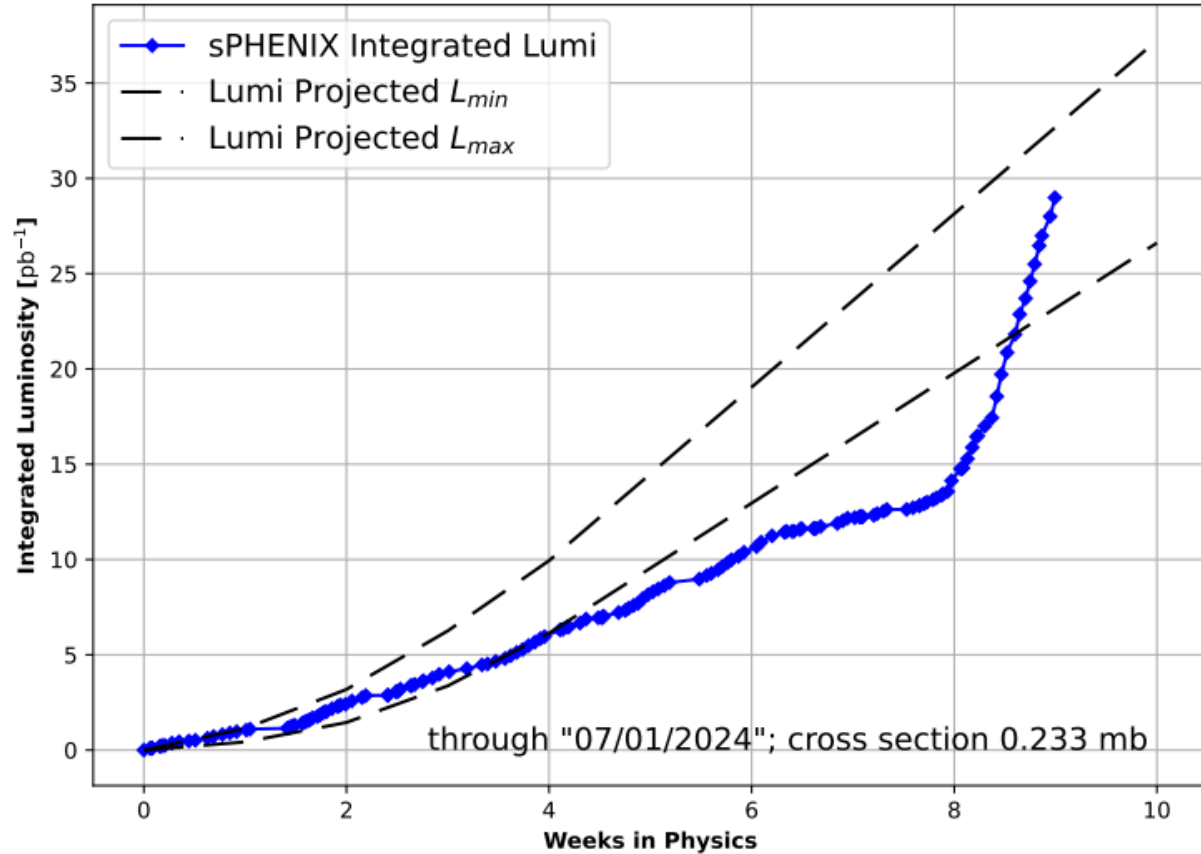
Maintenance day...

# Reminder from Operations

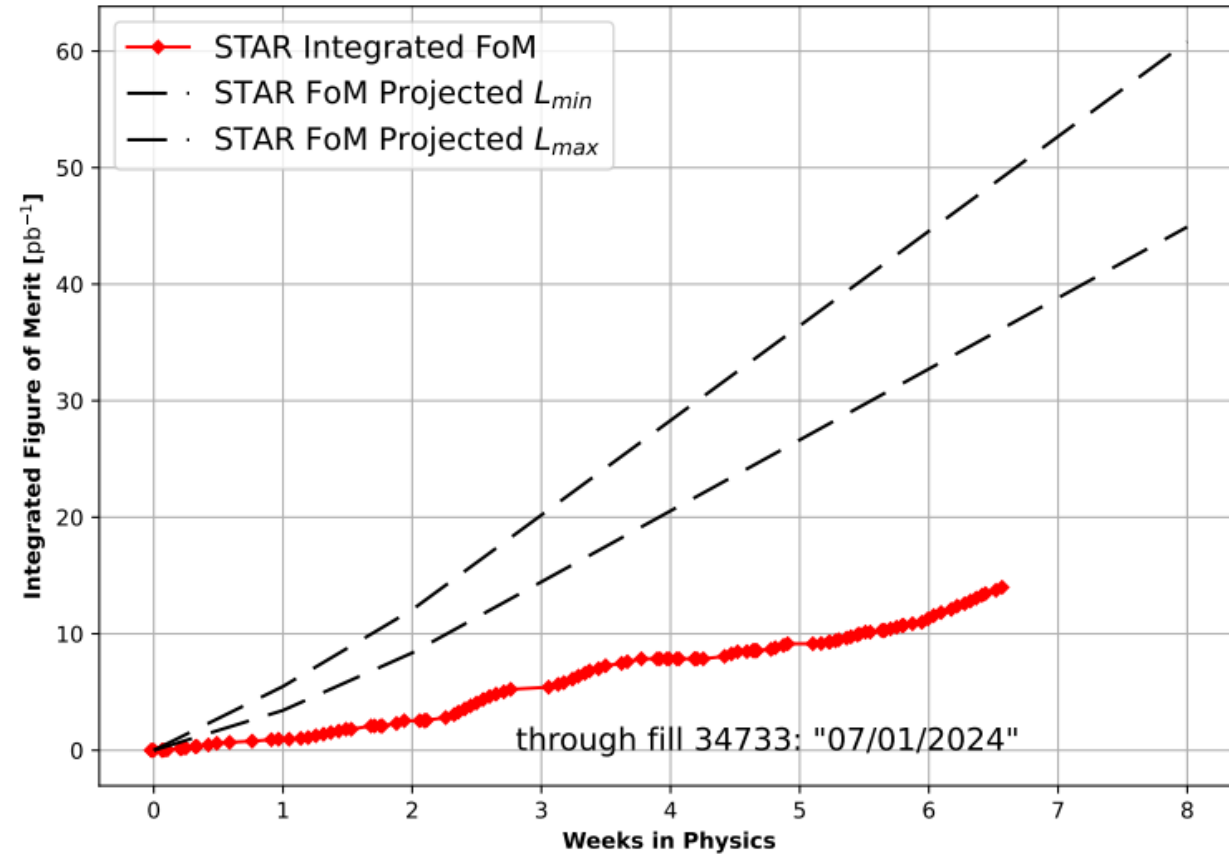
- MCR continues Operations for:
  - BLIP – continues into next week ending 9 July.
  - NSRL user scheduled to run Mon-Fri this week (except holiday); Development only next week.
  - AGS/Booster setups continue, additional to RHIC physics.
    - Injector Au setup as yet untested.
    - Injector h setup requires additional work.
    - Skew quad testing, other polarized beam setups continue as beam time allows.
    - Tandem d setup for NSRL pending.
  - RHIC beam for Physics stores.
    - Other MD, Maintenance, APEX as noted in schedule
- RHIC Tunnel access, sweeps remain under ODH-1 restrictions.
- CHECK AND EDIT YOUR OWN CONTACT INFO
  - <http://directory.pbn.bnl.gov/>
- CHECK YOUR CALLIN LIST: WCC and ECP updates needed
  - [https://www.cadops.bnl.gov/Operations/personnel/call\\_in\\_lists/](https://www.cadops.bnl.gov/Operations/personnel/call_in_lists/)
  - Note: Core Electrical contacts listed/managed on ESSHQ callin list  
[https://www.cadops.bnl.gov/Operations/personnel/call\\_in\\_lists/call\\_in\\_list.php?group=esshq](https://www.cadops.bnl.gov/Operations/personnel/call_in_lists/call_in_list.php?group=esshq)

# Preliminary delivered Luminosity, Figure of Merit (LP<sup>2</sup>) data for RHIC

FY24 Delivered Luminosity to sPHENIX  
100 GeV p<sup>+</sup> x 100 GeV p<sup>-</sup>



FY24 Delivered FoM to STAR  
100 GeV p<sup>+</sup> x 100 GeV p<sup>-</sup>



Courtesy R. Terheide

# Availability: RHIC Run-24

