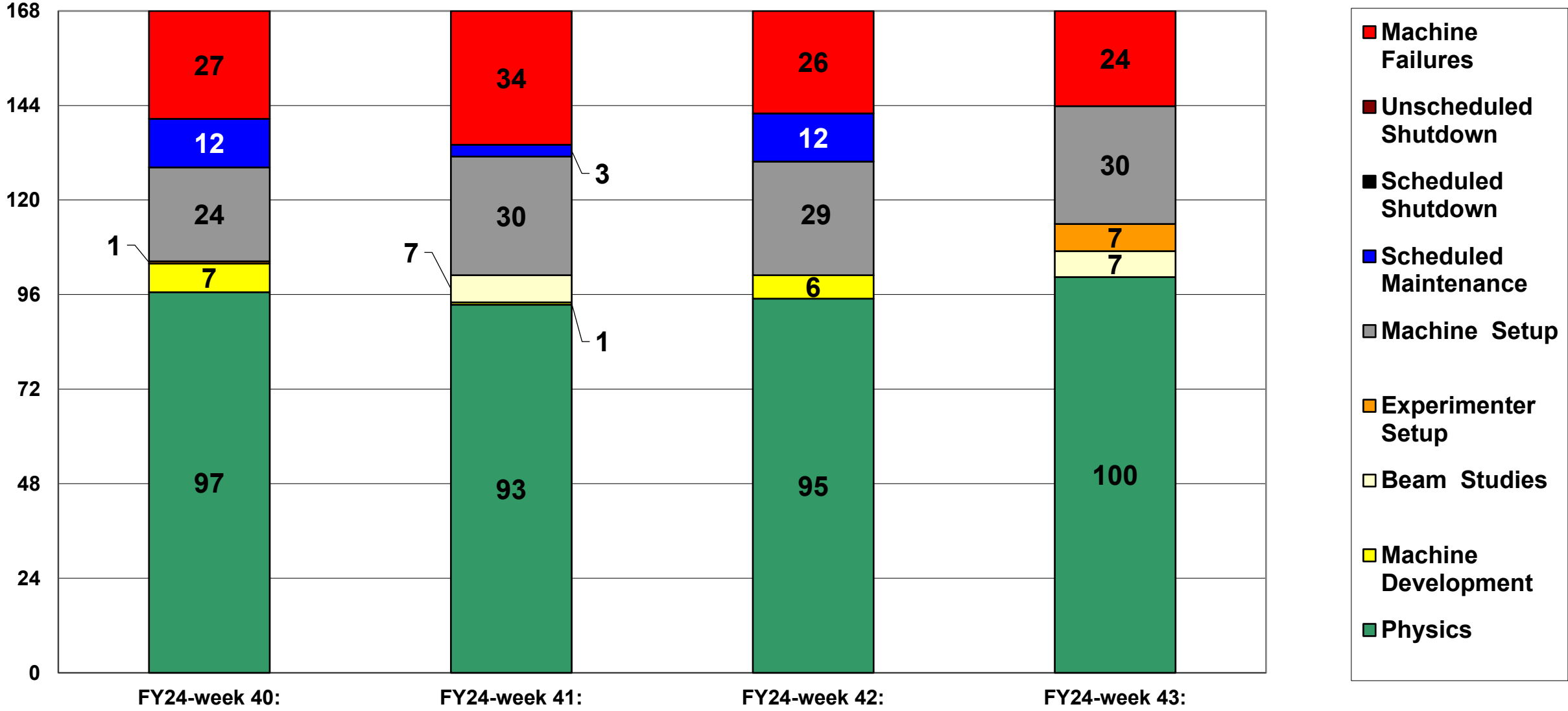
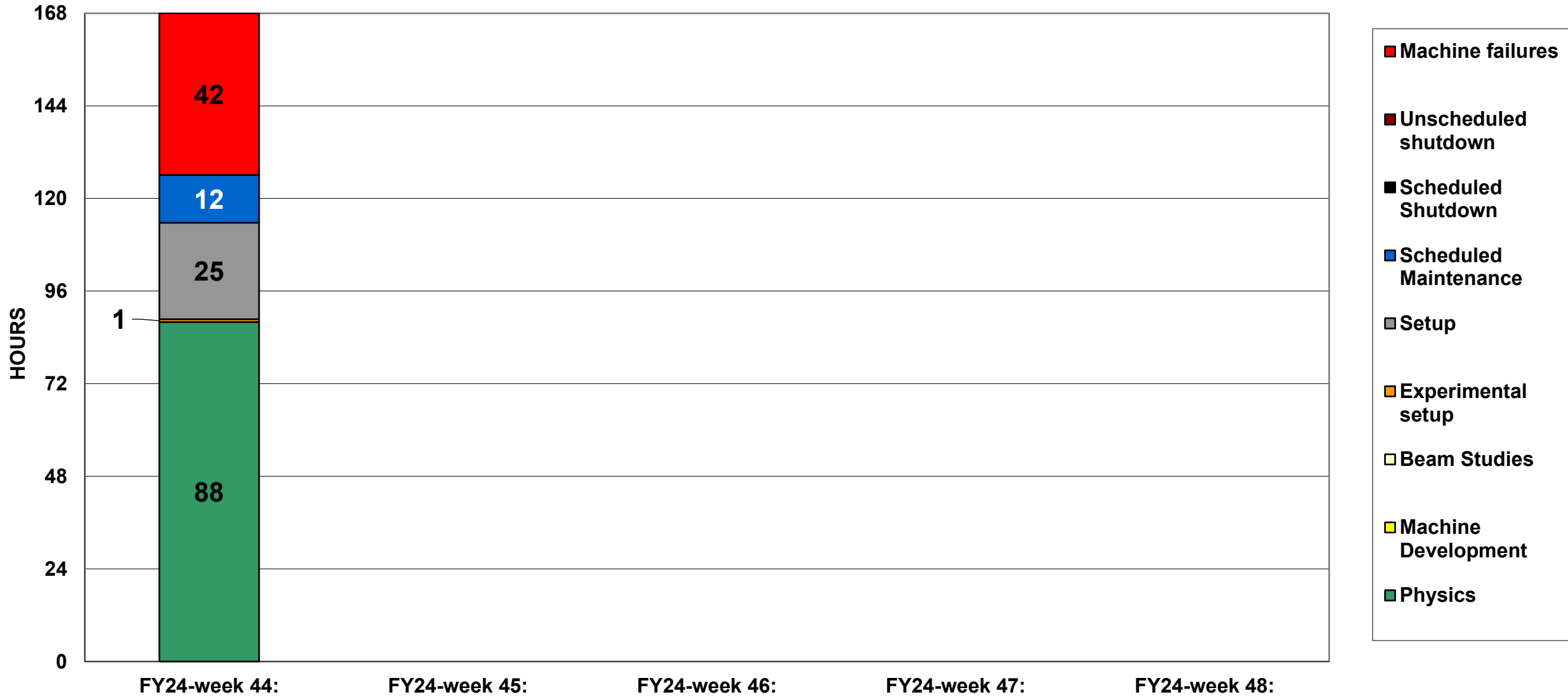


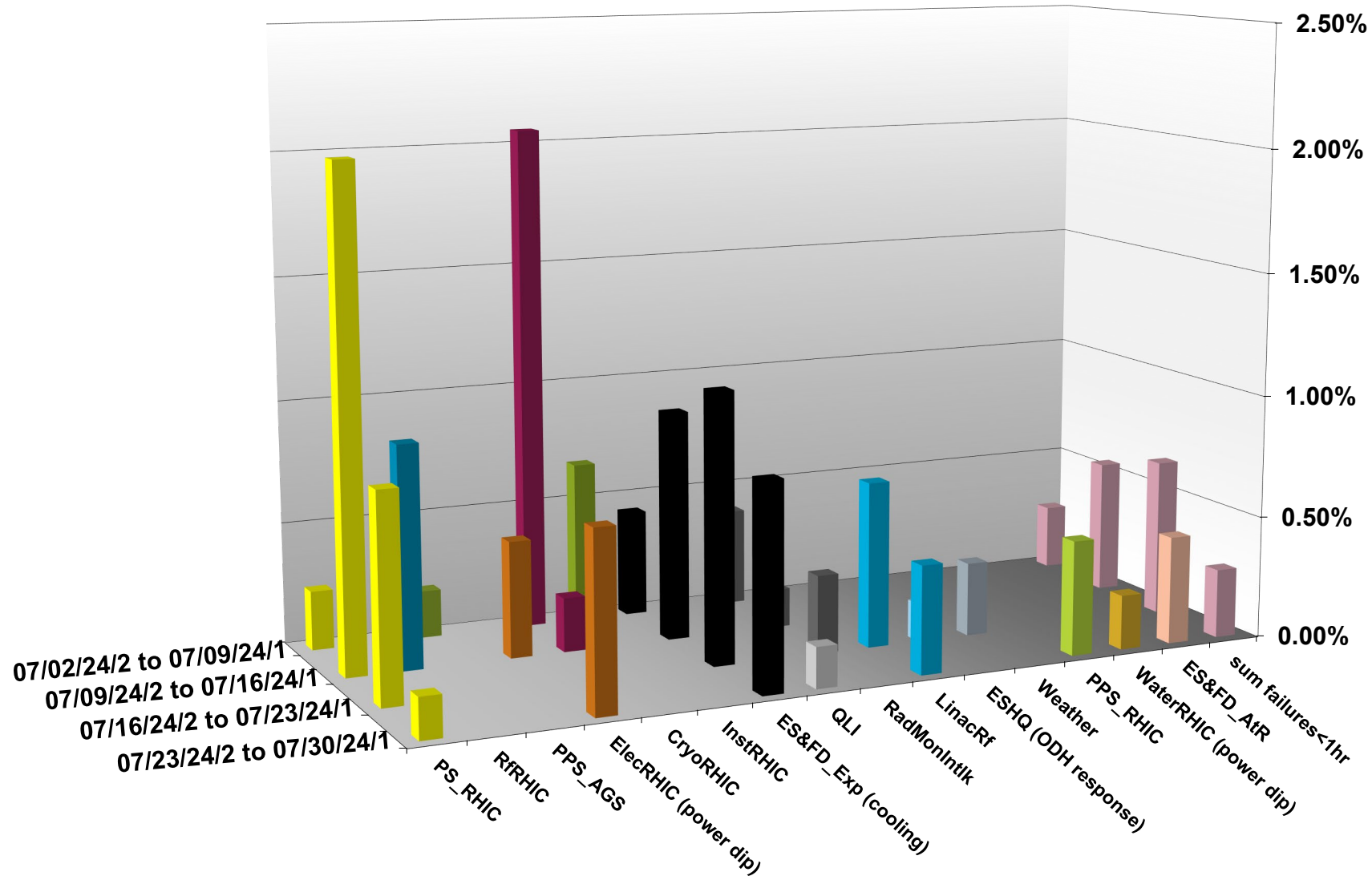
# C-AD ACTIVITY July 2024



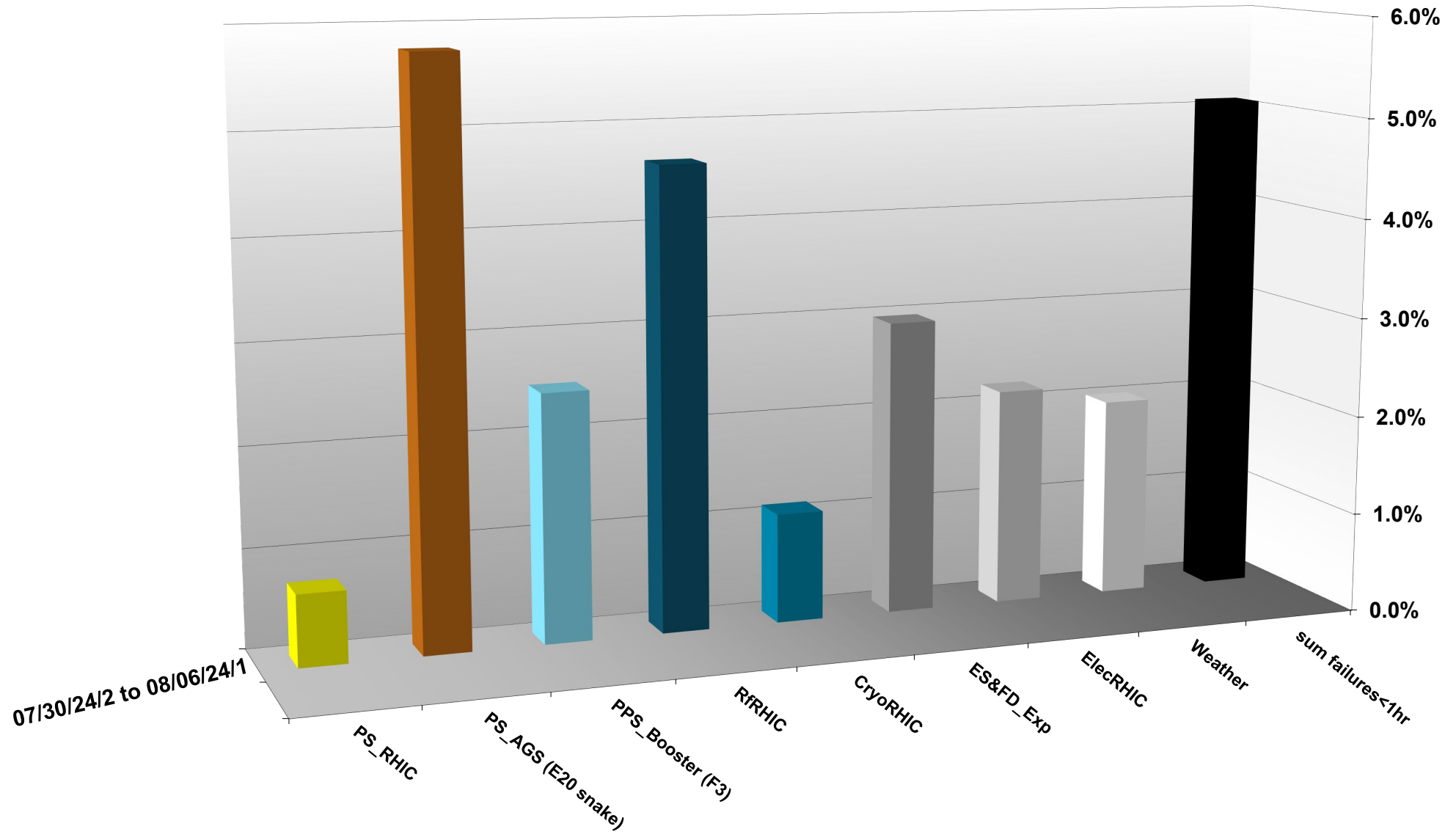
# C-AD ACTIVITY    AUGUST 2024



# INTEGRATED FAILURES (GREATER THAN ONE HOUR) BY SYSTEM -- July 2024



# INTEGRATED FAILURES (GREATER THAN ONE HOUR) BY SYSTEM -- AUGUST 2024



# Operations for BLIP

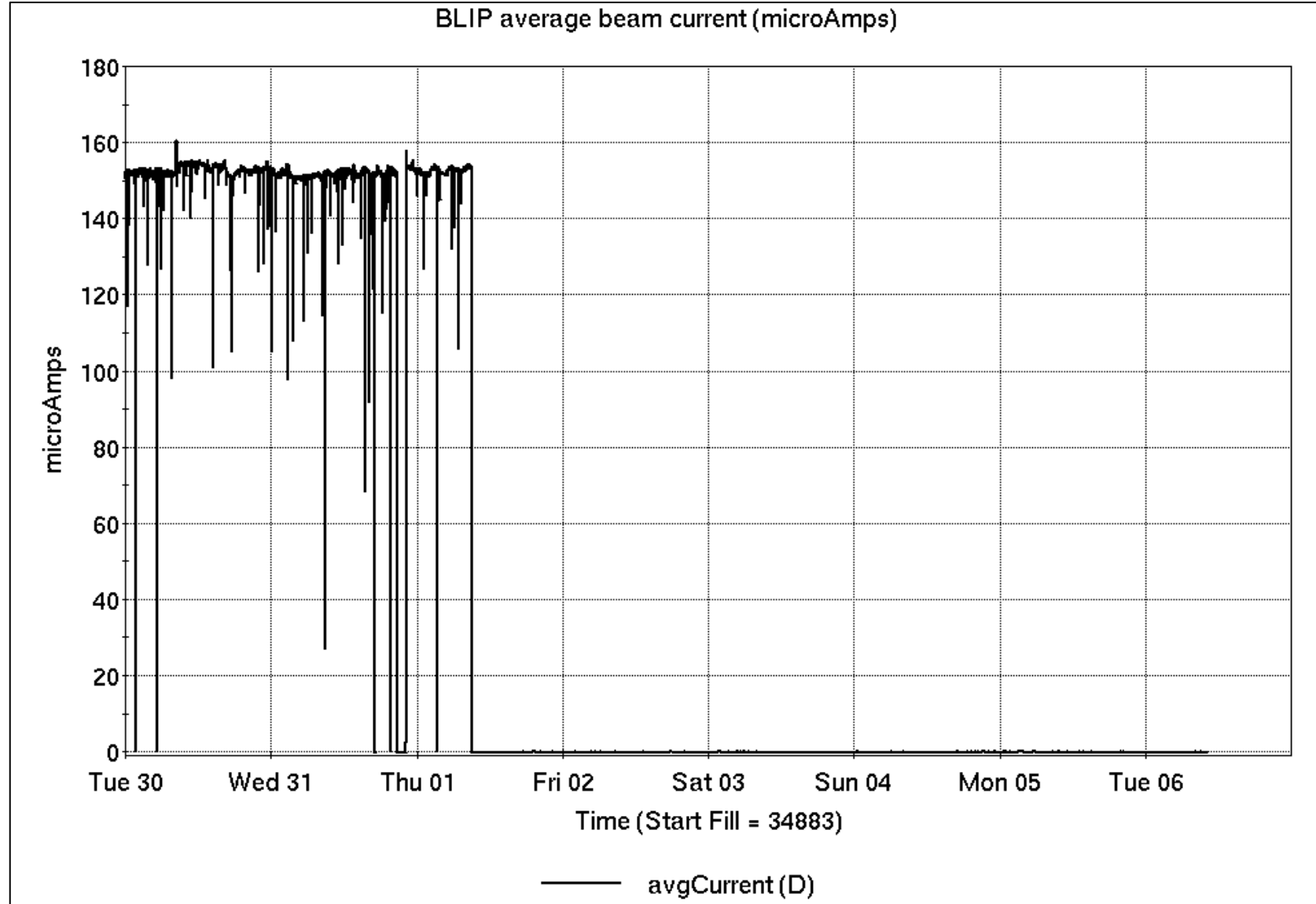
7/30-8/6/2024:

200 MeV Th target production concluded Thursday, marking end of season for BLIP production.

- 47.55 hr Production
- 1.45 hr Failure

Availability: 97%

96.2% for FY24 overall; over 3200 hours beam on targets. Longest streak, >130 hours without failure.



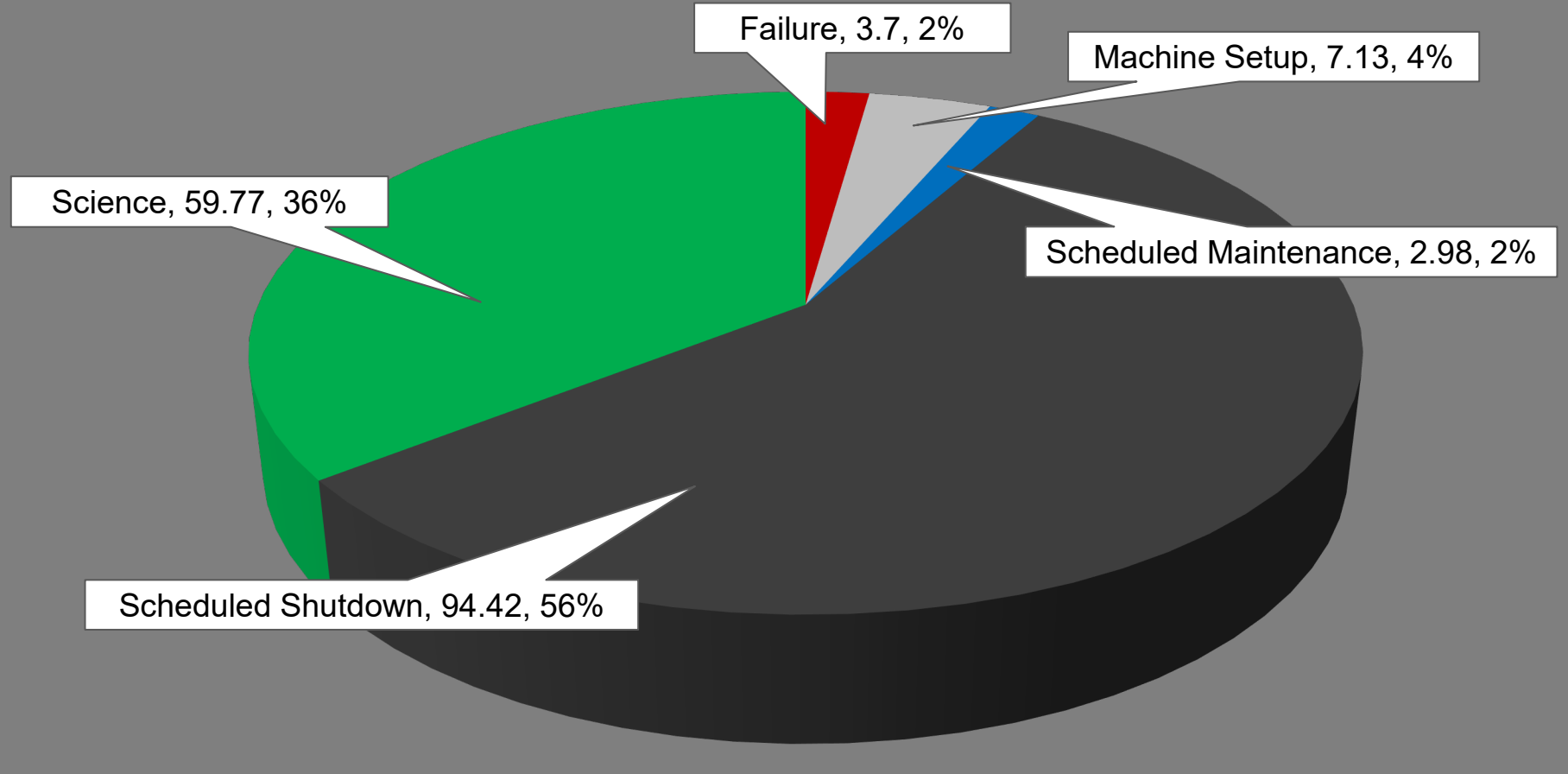
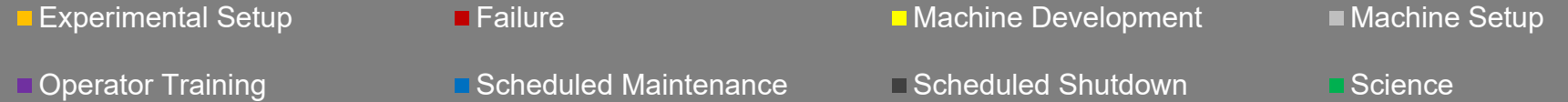
# NSRL activity past week: 7/30-8/6/2024 (as of 0800)

NSRL continues running for multiple users.

8 EBIS ions in use.  
(Si, Ti, Fe, Nb, Ag, Tb, Bi, Au)

Running 24-C schedule since 22 May. Schedule posted, **updates into September** for beams & users up to November.

## NSRL Hours



# Notes from Operations

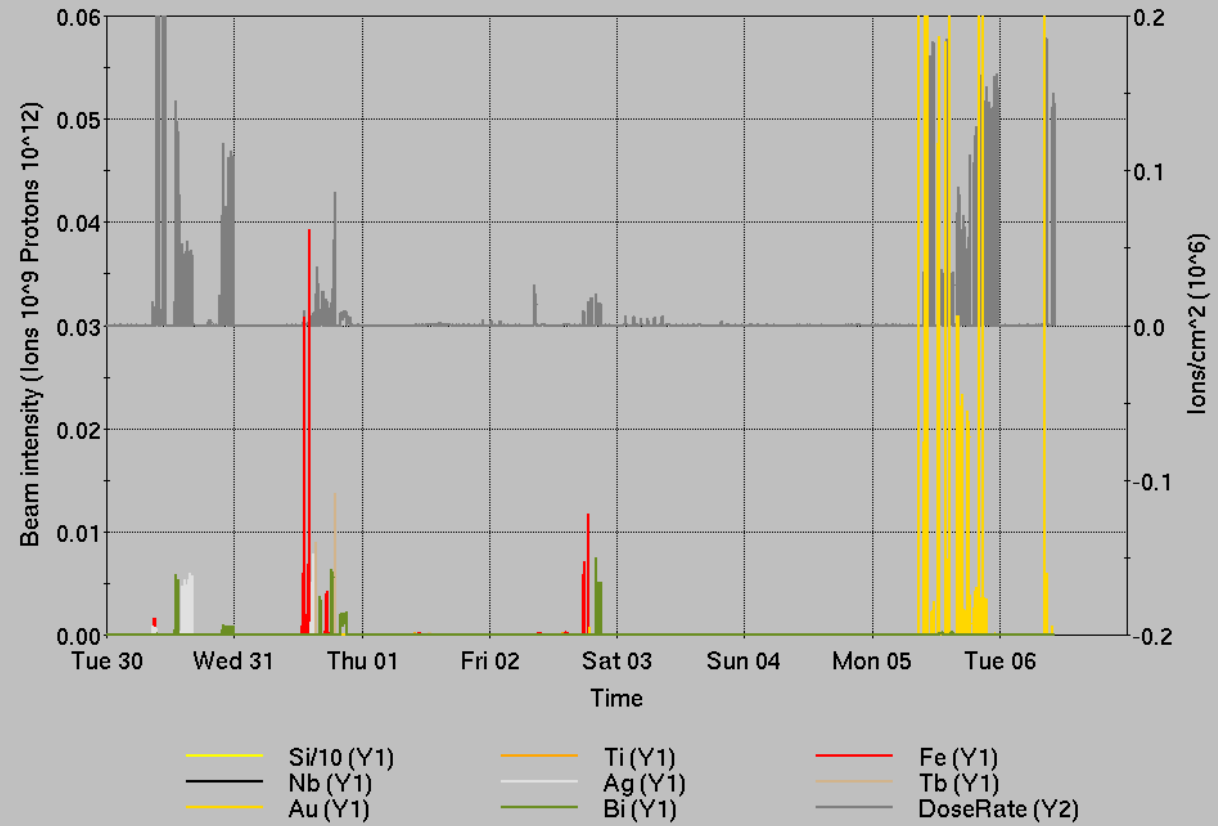
## Notable failures (>1 hr)

- Accesses for experimental failure
  - ...including residual failure from power dip in previous week
- Cryo lead flow failure, I/O card replaced
- AGS BLM trips, extraction losses; unresolved
- Power dip (3x) affecting multiple programs and systems; 2 during Maintenance period, with effects beyond
- E20 warm snake PS failure, contactor relay repaired
- RHIC injection issues, RF required hard reset
- EBIS RFQ failure from power dip, affecting NSRL
- Linac Mod 5 trip, breaker reset affecting BLIP
- Access Controls failure sector 6; processor replaced
- Booster F3 kicker failure, access for tube replacement
- Multiple weather stand-down periods

## Other notes

- **2 sweeps lost due to inexperienced entrants.**
- Booster circulating beam current transformer noise issues improved following access; cause TBD.
- Other misc EBIS, injector, RF trips, injector access

Some long repairs occur behind RHIC stores.  
(29 failures, mild+severe, with duration >1 hour)



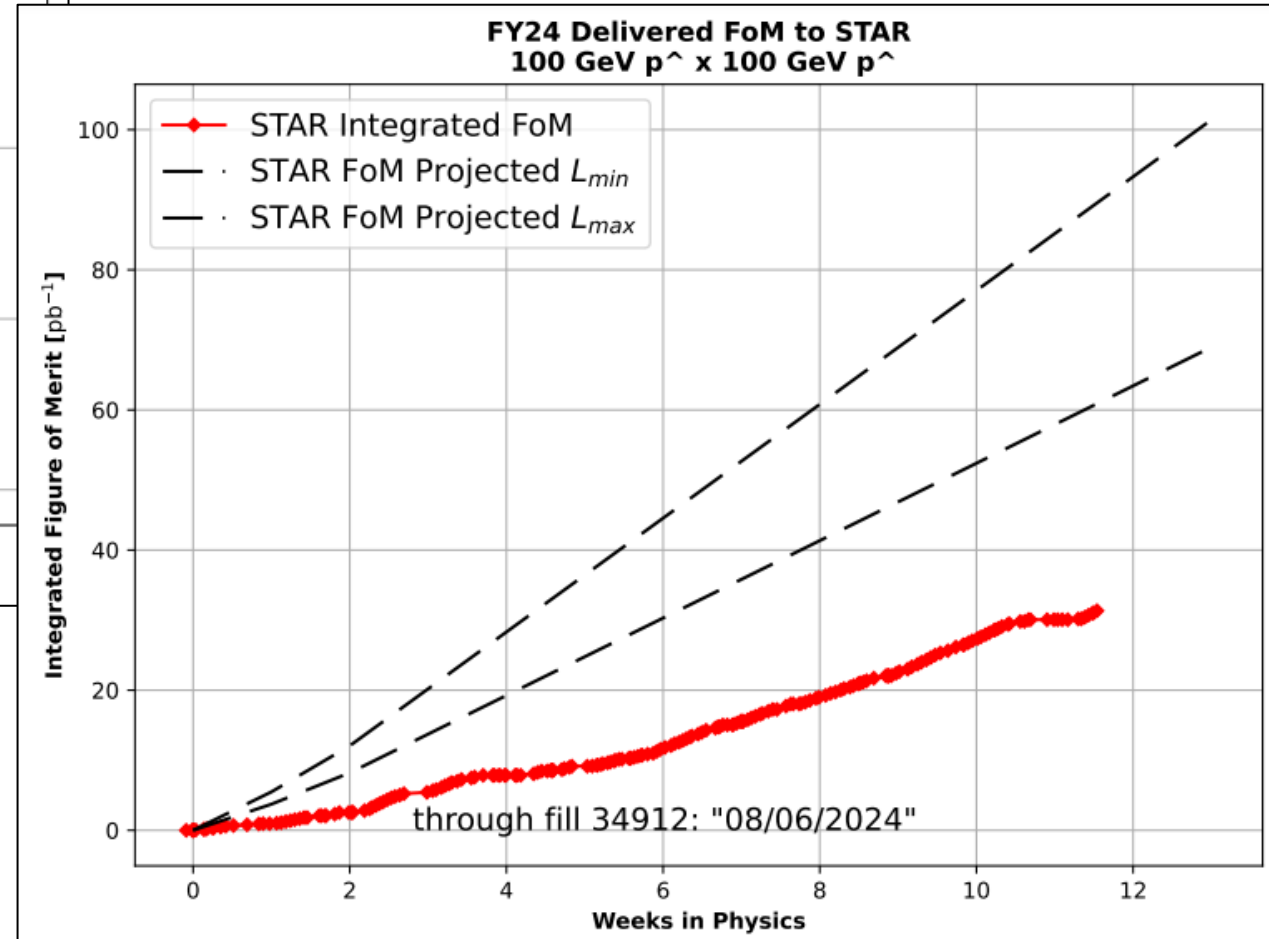
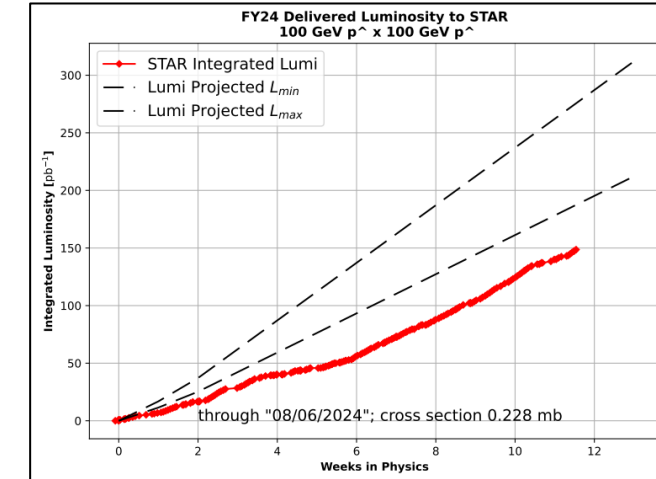
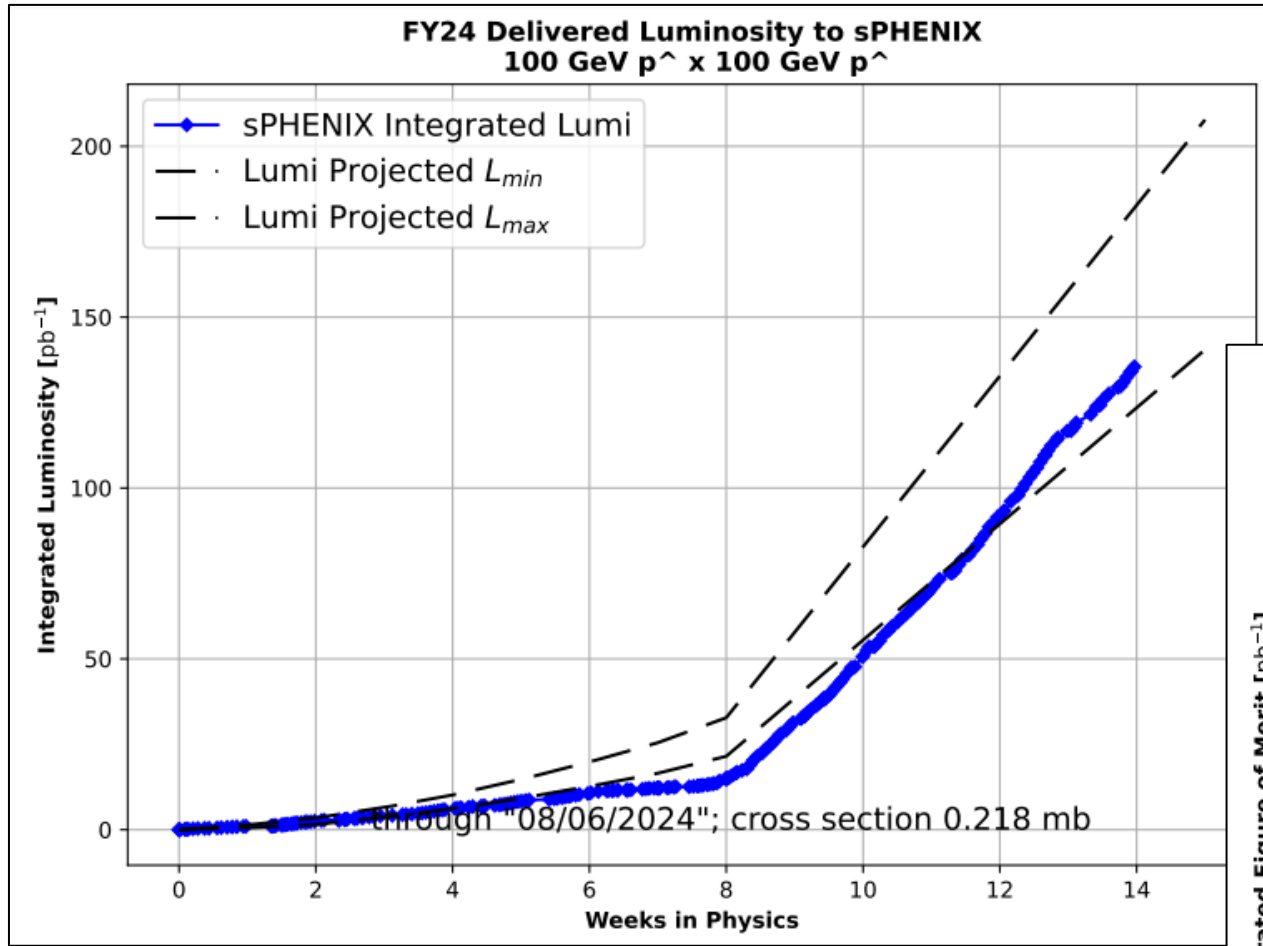
	Linac	Tandem	EBIS	Booster	AGS	ATR	RHIC	ERL	Other	Total
Total	6 (9)	49 (40)	1 (4)	7 (16)	10 (13)	5 (5)	60 (25)	(4)	(21)	(137)
RF	0 (0)	0 (0)	0 (0)	1 (0)	3 (0)	0 (0)	0 (0)	0 (0)	9 (10)	13 (10)
PS	1 (3)	44 (6)	1 (4)	0 (0)	2 (6)	0 (2)	5 (5)	0 (0)	2 (1)	55 (27)
Vacuum	4 (2)	5 (32)	0 (0)	5 (15)	0 (0)	0 (3)	0 (17)	0 (4)	13 (7)	27 (80)
Inst	1 (0)	0 (2)	0 (0)	0 (0)	1 (2)	5 (0)	2 (3)	0 (0)	2 (3)	11 (10)
Other	0 (4)	0 (0)	0 (0)	1 (1)	4 (5)	0 (0)	53 (0)	0 (0)	5 (0)	63 (10)

# Reminder from Operations

- MCR continues Operations for:
  - (not) BLIP – shutdown.
  - NSRL – users scheduled to run Mon-Fri this week and next.
  - AGS/Booster setups continue, additional to RHIC physics.
    - Injector **Au setup as yet untested**. Tandem Au setup pending.
    - Injector h setup, **mode switching**, RHIC setup for APEX
    - Skew quad & **other polarized beam setups continue** as beam time allows.
  - RHIC beam for Physics stores.
    - Other MD, Maintenance, APEX as noted in schedule
- CHECK YOUR CALLIN LIST: **WCC** and **ECP** updates needed
  - **Initial failure response often involves ECP consult. Ensure your Group callin list contains this information.**
  - **Callin lists should be accurate in terms of personnel and time off.**
  - [https://www.cadops.bnl.gov/Operations/personnel/call\\_in\\_lists/](https://www.cadops.bnl.gov/Operations/personnel/call_in_lists/)
  - Note: **Core Electrical contacts listed/managed on ESSHQ callin list**  
[https://www.cadops.bnl.gov/Operations/personnel/call\\_in\\_lists/call\\_in\\_list.php?group=esshq](https://www.cadops.bnl.gov/Operations/personnel/call_in_lists/call_in_list.php?group=esshq)
- CHECK AND EDIT YOUR OWN CONTACT INFO
  - <http://directory.pbn.bnl.gov/>



# Preliminary delivered Luminosity, Figure of Merit (LP<sup>2</sup>) data for RHIC



Courtesy R. Terheide

# Availability: RHIC Run-24

