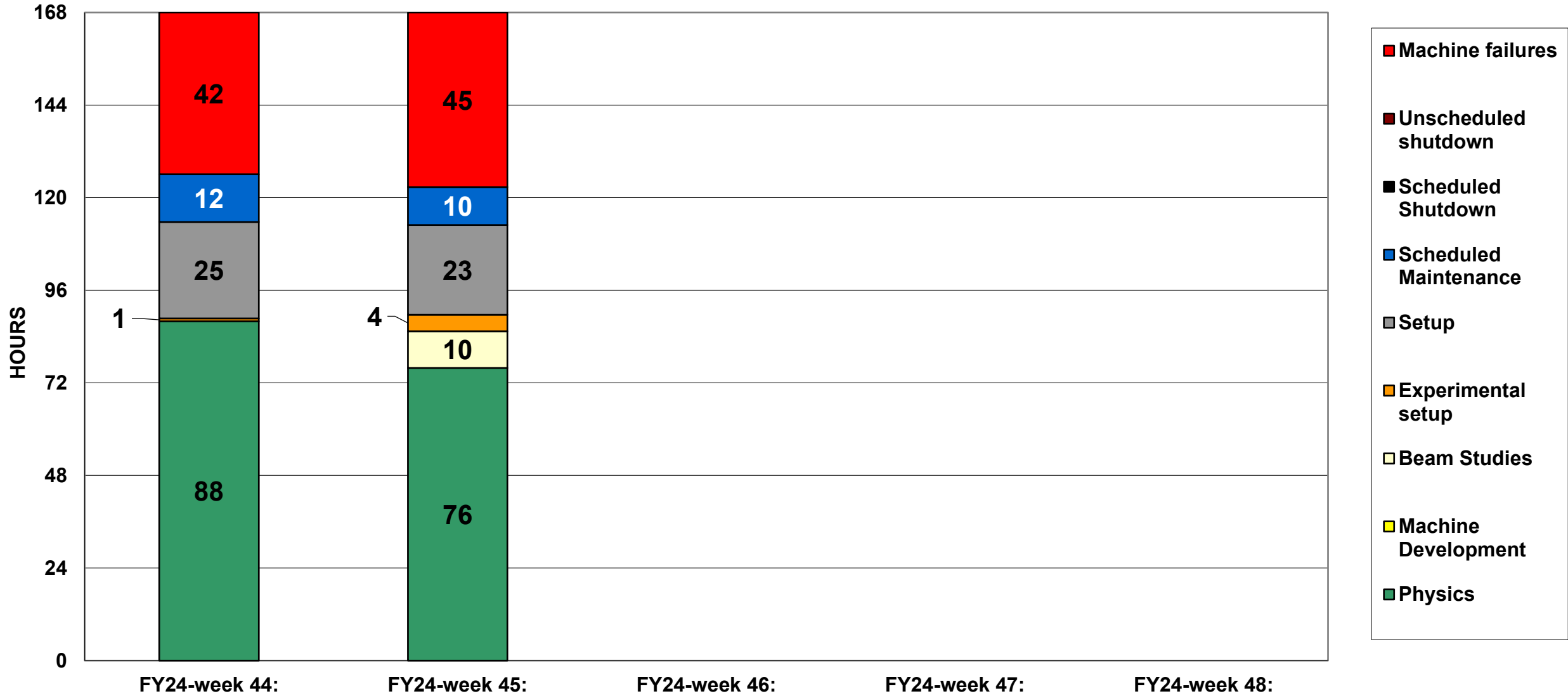
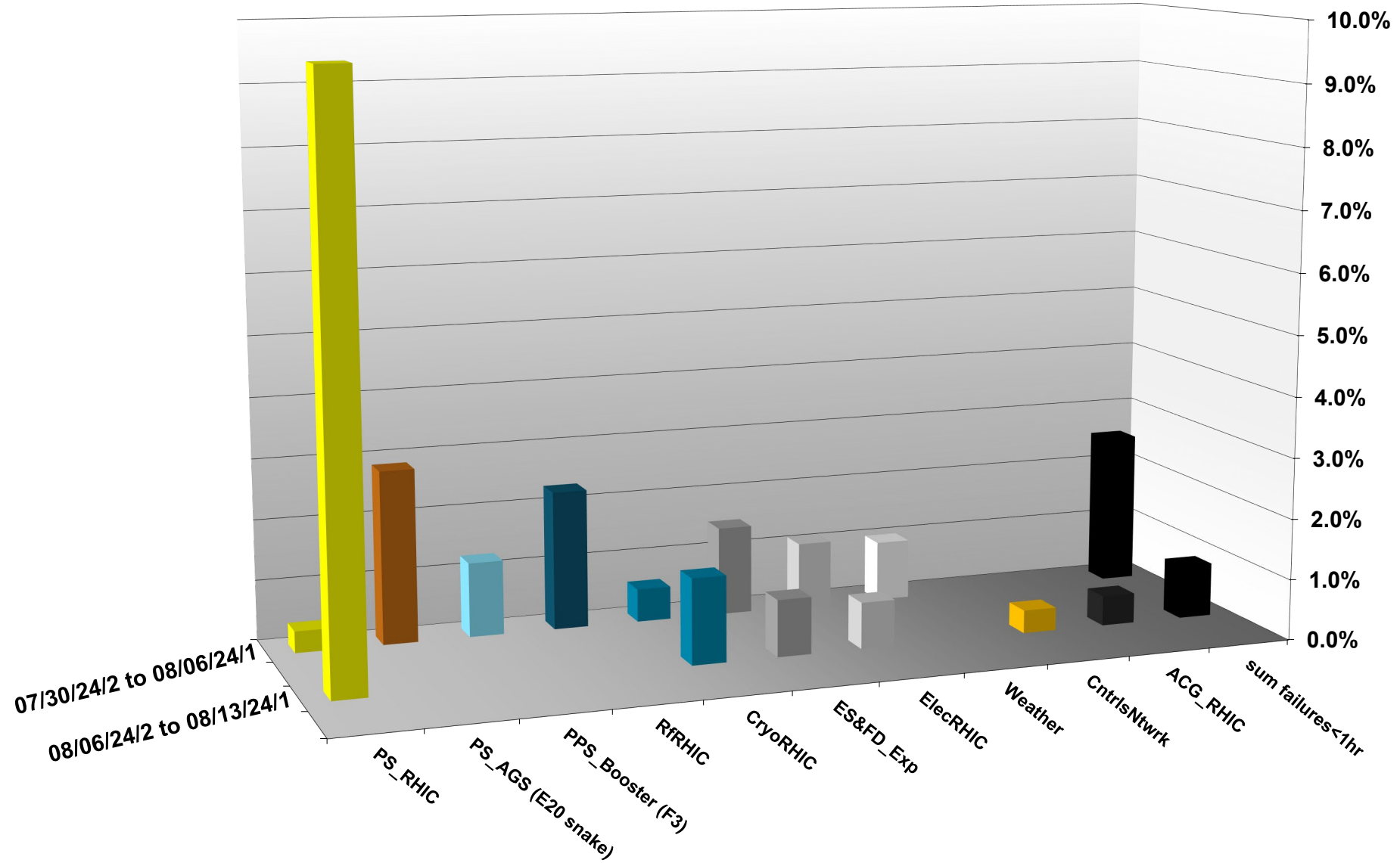


# C-AD ACTIVITY      AUGUST 2024



# INTEGRATED FAILURES (GREATER THAN ONE HOUR) BY SYSTEM -- AUGUST 2024



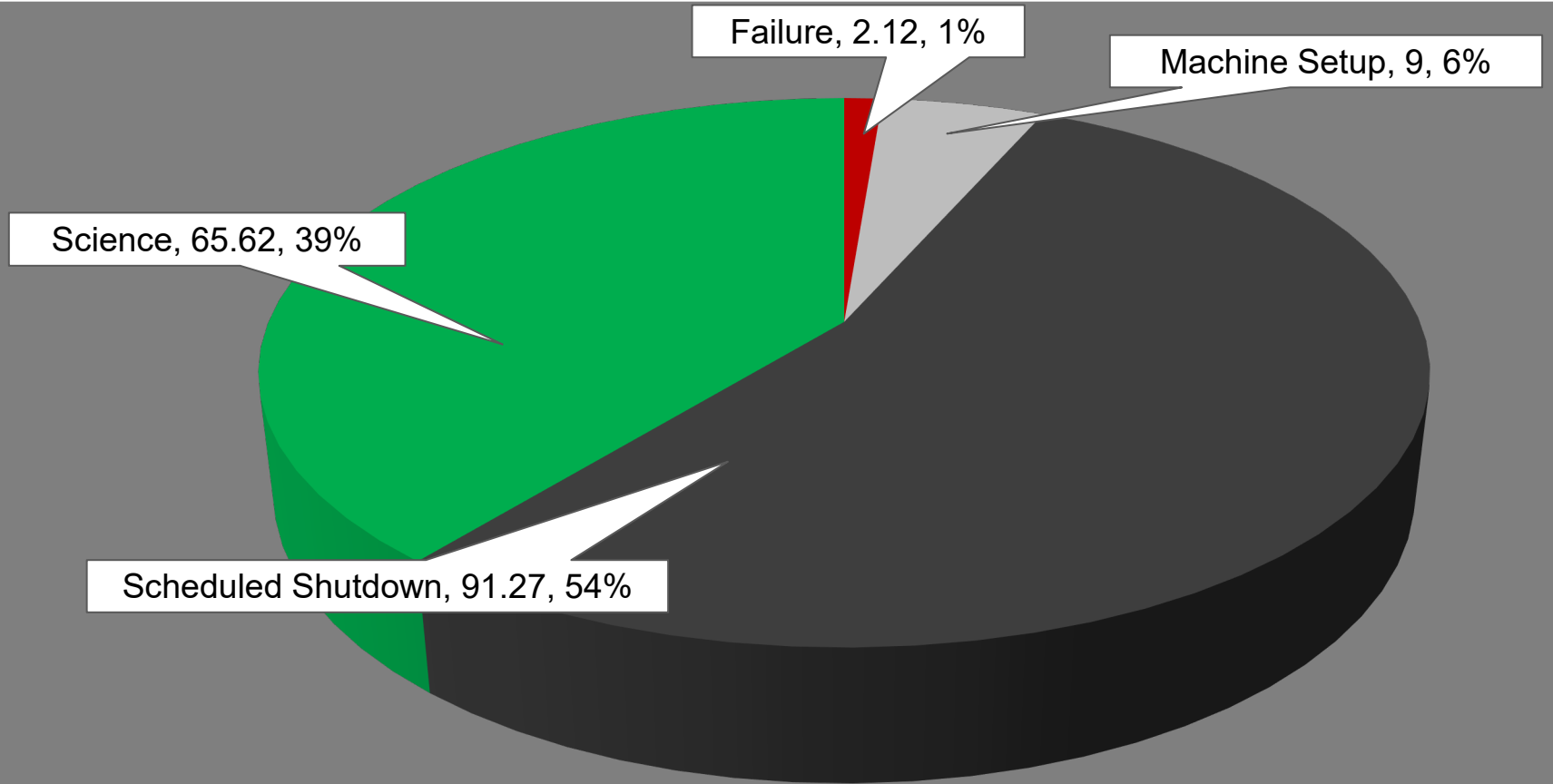
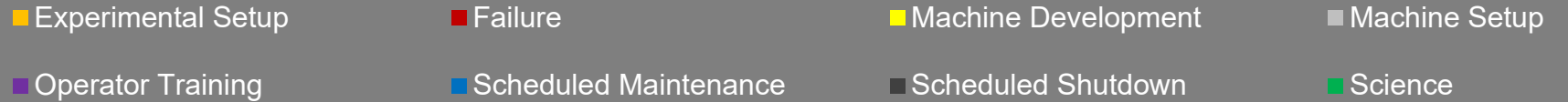
# NSRL activity past week: 8/6-13/2024 (as of 0800)

NSRL continues running for multiple users.

Linac protons, 4 EBIS ions in use.  
(Fe, Nb, Ta, Au)

Running 24-C schedule since 22 May. Schedule posted, **updates into September & October** for beams & users up to November.

## NSRL Hours



# Notes from Operations

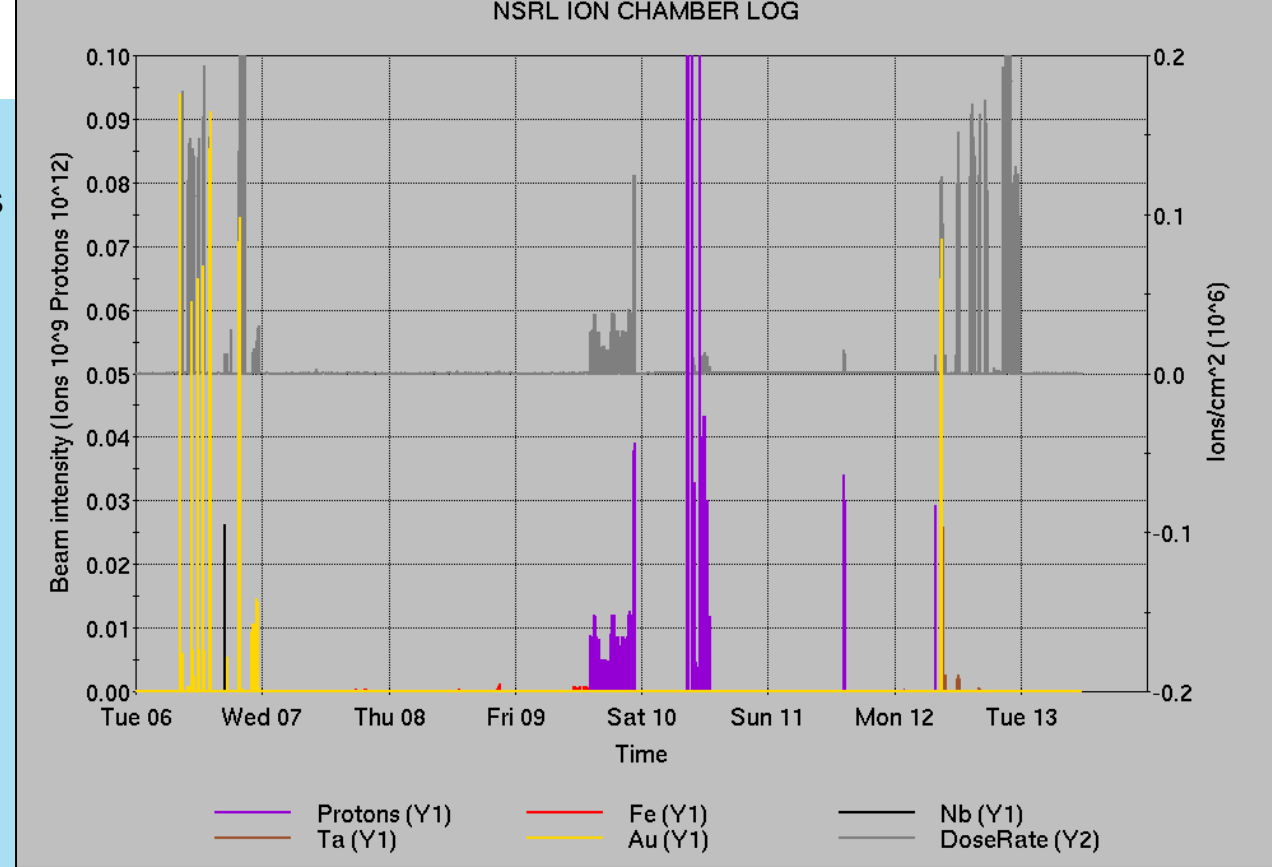
## Notable failures (>1 hr)

- Power dip and weather stand-down, affecting both programs and multiple systems.
- Access Controls failure, sector 6 hardware fault
- Experimental accesses for STAR ZDC, sPHENIX TPOT cooling, other troubleshooting
- RHIC PS failure involving Blue main dipole, b8-dhx Quench Protection & PS, b4-dhx PS, building 1004B HVAC
- Cryo lead flow interlock, PLC analog input card replaced
- Failed network switch, 7B alcove; FEC resets also required.

## Other notes

- AGS tunemeter charging supply failure affects polarized beam tuning and development.
- Booster F3 extraction kicker PS fuse failure; store extended
- Linac RFQ trip, modulator & driver replaced
- Linac Mod 1 trip, bias PS circuit breaker reset
- AGS RF station BC repaired, feedback amp replaced
- AGS RF station B breaker overheating, repaired
- Loss Monitor beam aborts (2x), failed ramps/rebucketing
- Position Monitor beam aborts, failed corrector PS excluded
- AGS cold snake LHe refill behind other failures and interruptions
- Other misc trips, resets

Some long repairs occur behind RHIC stores.  
 (logged 29 failures, mild+severe, with duration >1 hour;  
 19 short failures; 24 resets)



	Linac	Tandem	EBIS	Booster	AGS	ATR	RHIC	ERL	Other	Total
Total	6 (8)	49 (40)	1 (4)	9 (16)	10 (13)	5 (5)	15 (25)	0 (4)	30 (21)	125 (136)
RF	0 (0)	0 (0)	0 (0)	1 (0)	2 (0)	0 (0)	0 (0)	0 (0)	7 (10)	10 (10)
PS	2 (2)	43 (6)	1 (4)	0 (0)	6 (6)	0 (2)	9 (5)	0 (0)	0 (1)	61 (26)
Vacuum	4 (2)	5 (32)	0 (0)	5 (15)	1 (0)	0 (3)	0 (17)	0 (4)	11 (7)	26 (80)
Inst	0 (0)	1 (2)	0 (0)	0 (0)	0 (2)	5 (0)	0 (3)	0 (0)	2 (3)	8 (10)
Other	0 (4)	0 (0)	0 (0)	3 (1)	1 (5)	0 (0)	6 (0)	0 (0)	10 (0)	20 (10)

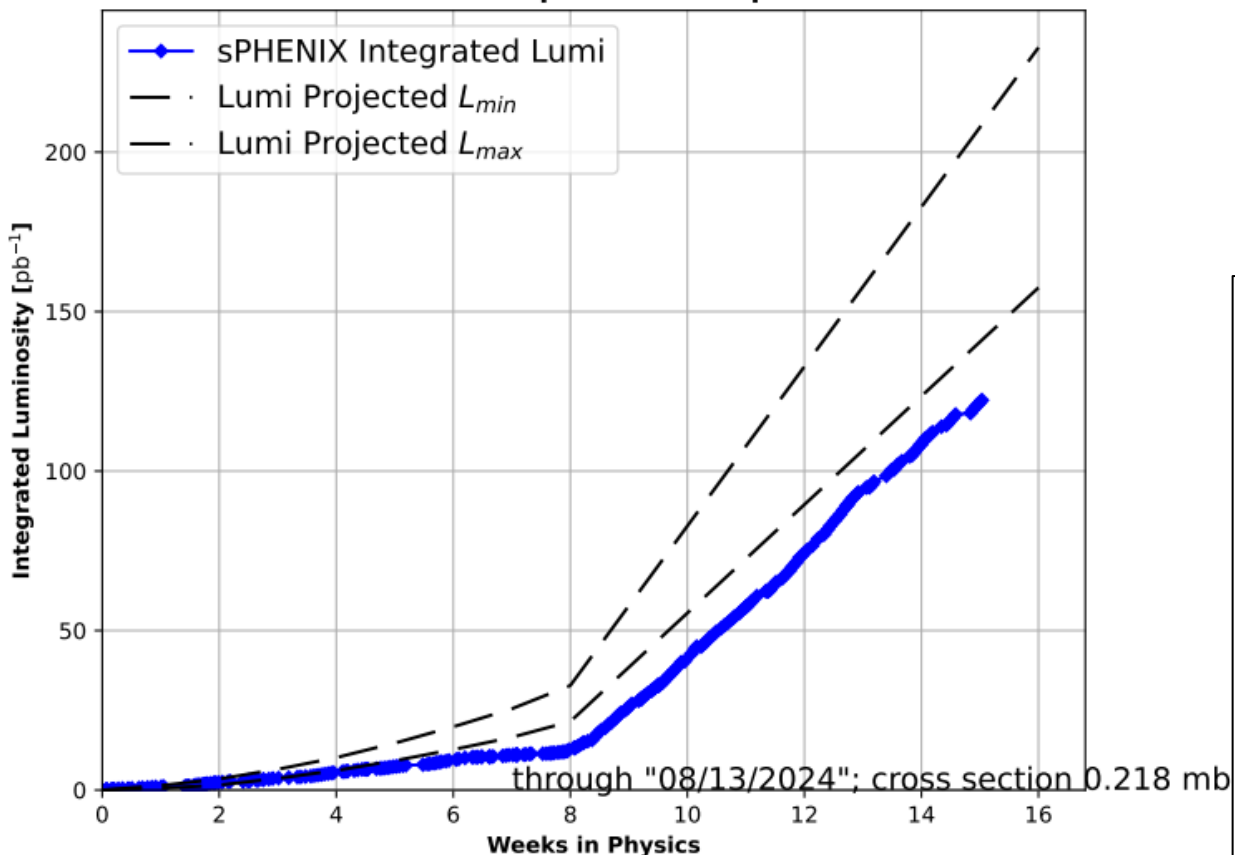
Tue Aug 13 11:43:04 EDT 2024

# Reminder from Operations

- MCR continues Operations for:
  - BLIP – pending additional production run.
  - NSRL – users scheduled to run Mon-Fri this week and next.
  - AGS/Booster setups continue, additional to RHIC physics.
    - Injector Au setup as yet untested. Tandem Au setup pending.
    - Injector h setup no longer required for APEX
    - Skew quad & other polarized beam setups continue with limited instrumentation.
  - RHIC beam for Physics stores.
    - Other MD, Maintenance, APEX as noted in schedule
- CHECK YOUR CALLIN LIST: WCC and ECP updates needed
  - Initial failure response often involves ECP consult. Ensure your Group callin list contains this information.
  - Callin lists should be accurate in terms of personnel and time off.
  - [https://www.cadops.bnl.gov/Operations/personnel/call\\_in\\_lists/](https://www.cadops.bnl.gov/Operations/personnel/call_in_lists/)
  - Note: Core Electrical contacts listed/managed on ESSHQ callin list  
[https://www.cadops.bnl.gov/Operations/personnel/call\\_in\\_lists/call\\_in\\_list.php?group=esshq](https://www.cadops.bnl.gov/Operations/personnel/call_in_lists/call_in_list.php?group=esshq)
- CHECK AND EDIT YOUR OWN CONTACT INFO
  - <http://directory.pbn.bnl.gov/>

# Preliminary delivered Luminosity, Figure of Merit (LP<sup>2</sup>) data for RHIC

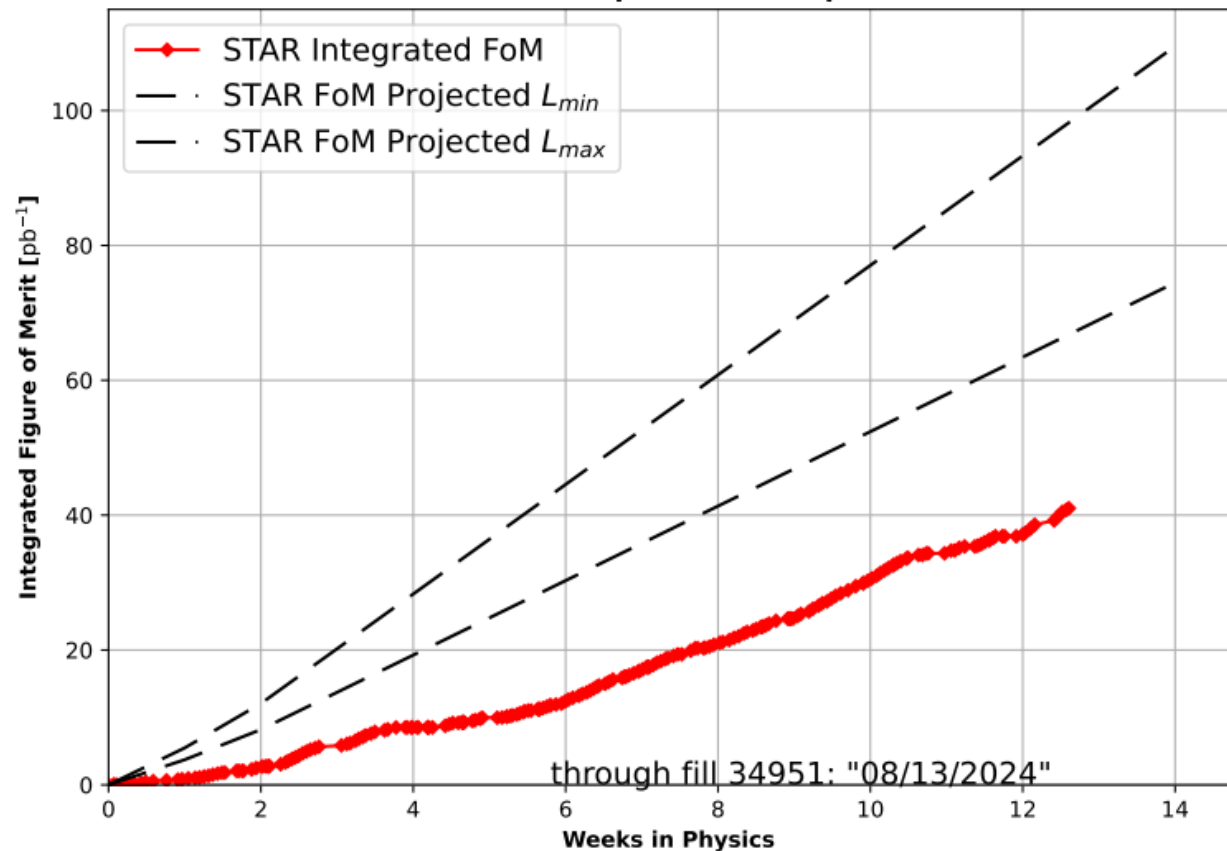
FY24 Delivered Luminosity to sPHENIX  
100 GeV p<sup>+</sup> x 100 GeV p<sup>-</sup>



Note: singles corrections applied to integrated lumi plot

Courtesy R. Terheide

FY24 Delivered FoM to STAR  
100 GeV p<sup>+</sup> x 100 GeV p<sup>-</sup>



# Availability: RHIC Run-24

