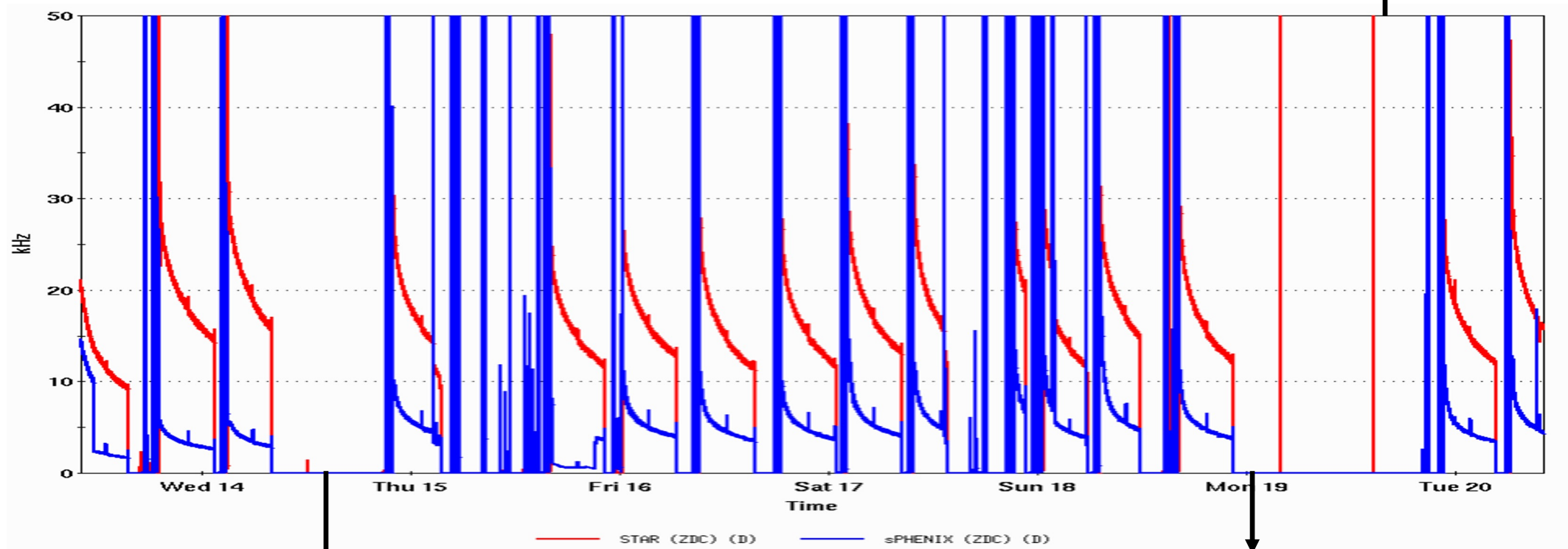


STAR Status (Aug 13 - 20, 2024)

Efficient data-taking when we have collisions

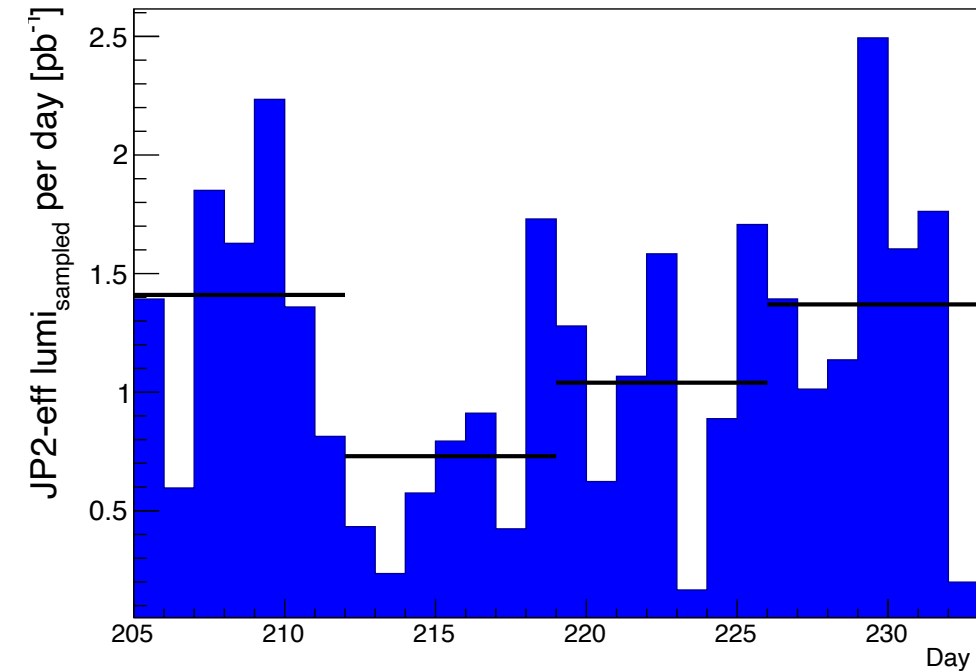
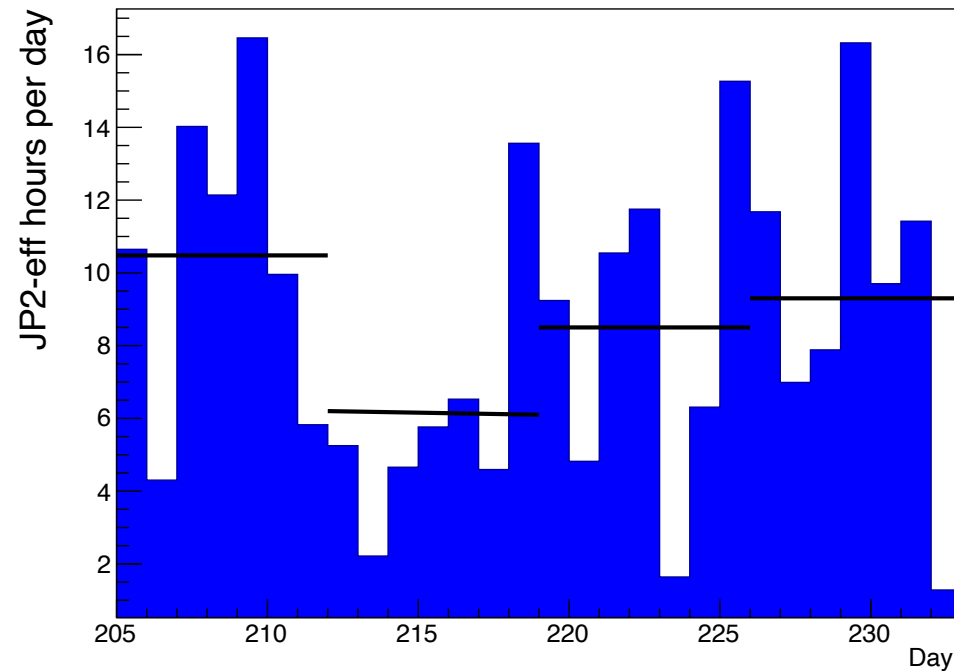
- MCW chiller fixed
- Recovered from system off



Maintenance

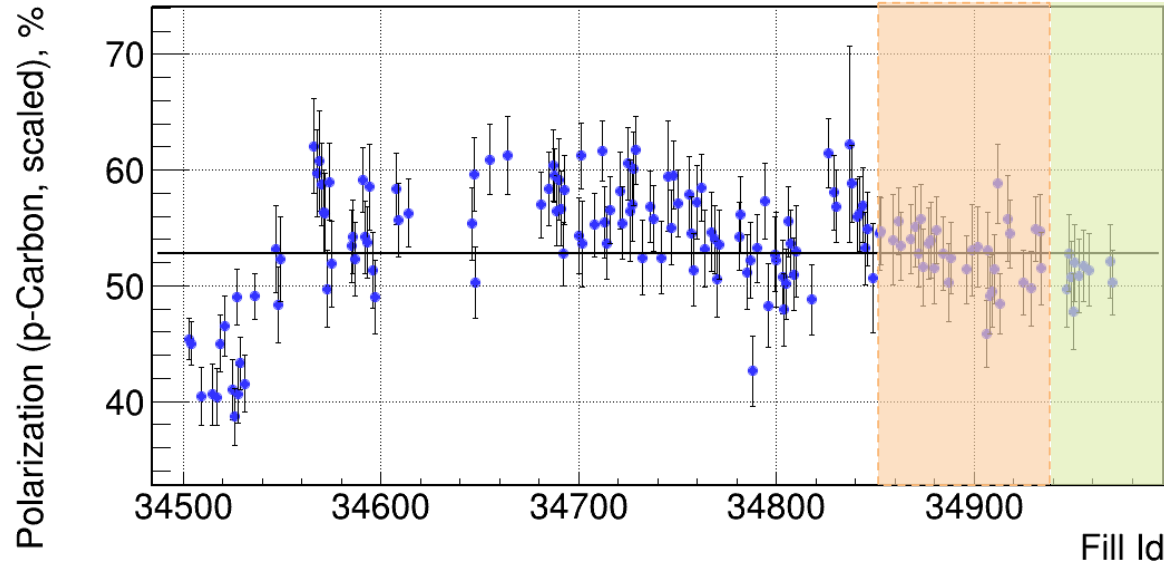
- Weather standdown
- MCW chiller issue
- Water leak from the rain

JP2-eff, major trigger at middle rapidity



This week: apart from yesterday, high lumi sampled at STAR; highest lumi day so far last Friday (JP2-eff 2.5 pb⁻¹)

pC polarization, B1U



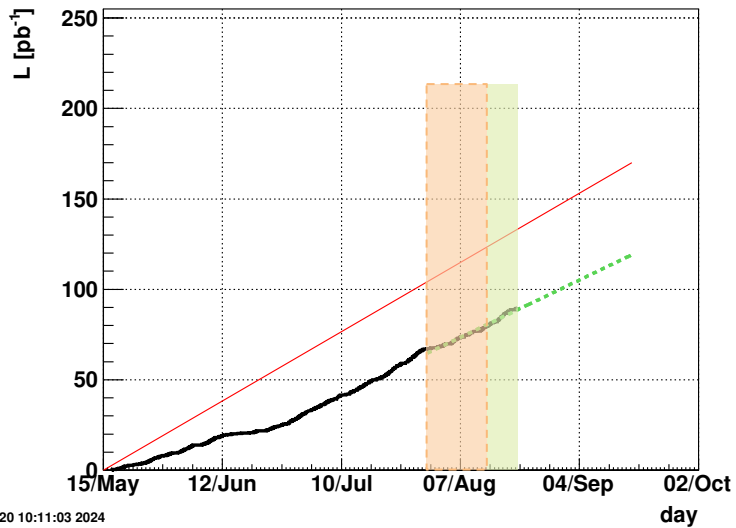
This week, polarization drops below average

Run24 pp200: averaged pol. so far = 52.8%

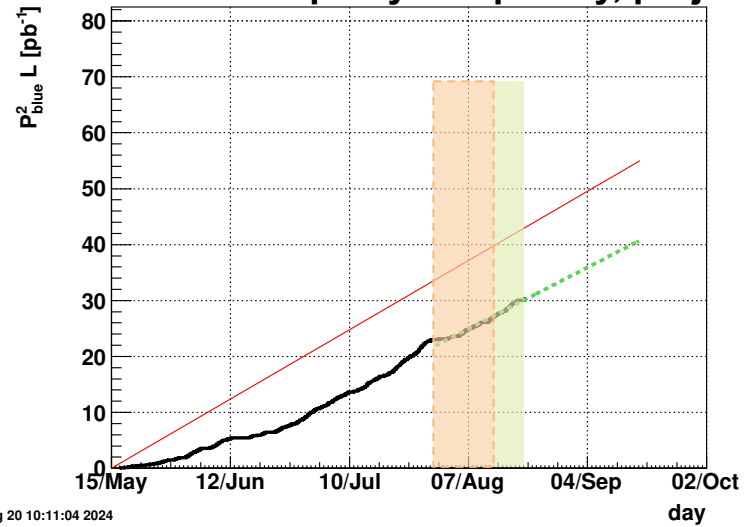
Run22 pp508: averaged pol. = 50.4%

Run15 pp200: averaged pol. = 56.7%

JP2-effective Middle rapidity JP2-eff, proj.



fcsJPsiAsy Forward rapidity fcsJpsiAsy, proj.



Mid rapidity:
JP2-eff projected to achieve
~71% of our goal till Sep 16

FWD rapidity:
fcsJPsiAsy projected to
achieve ~80% of our goal till
Sep 16, with P^2L