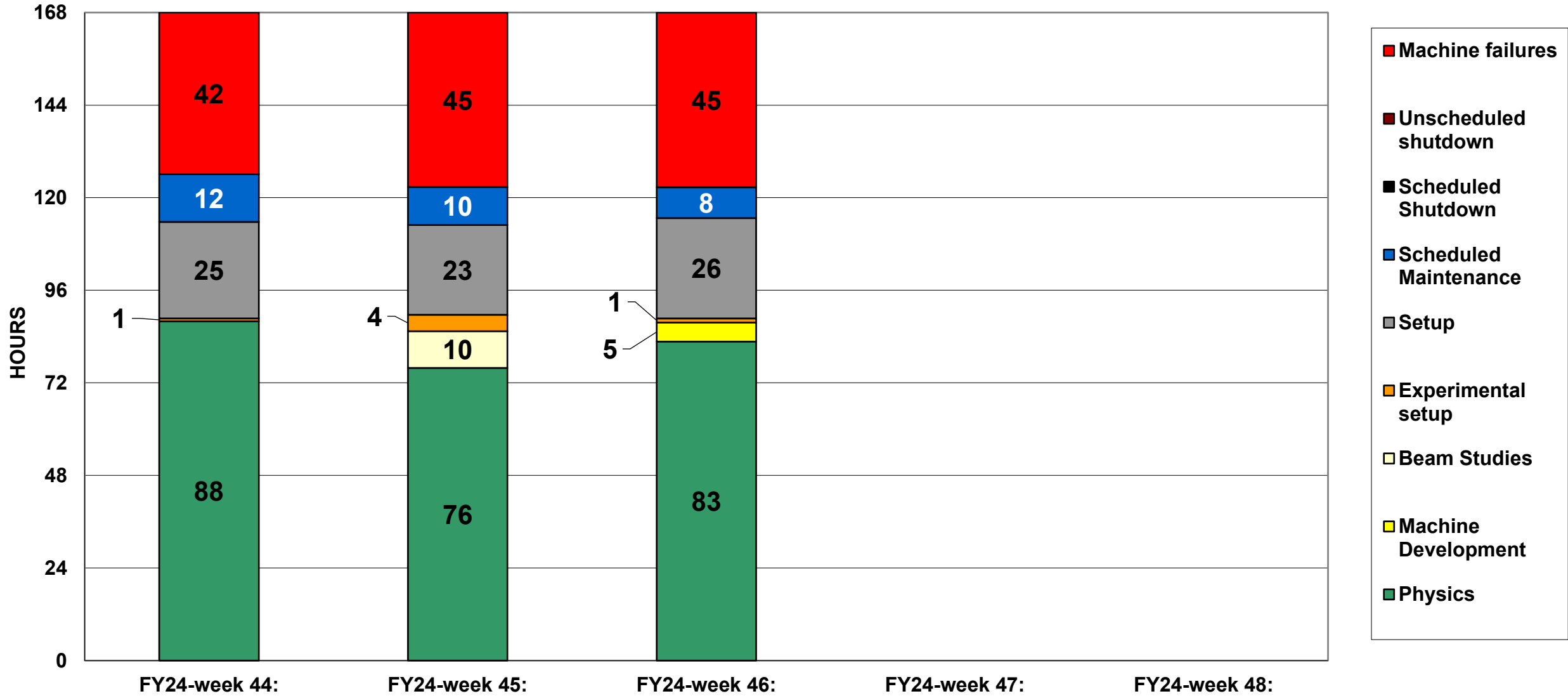
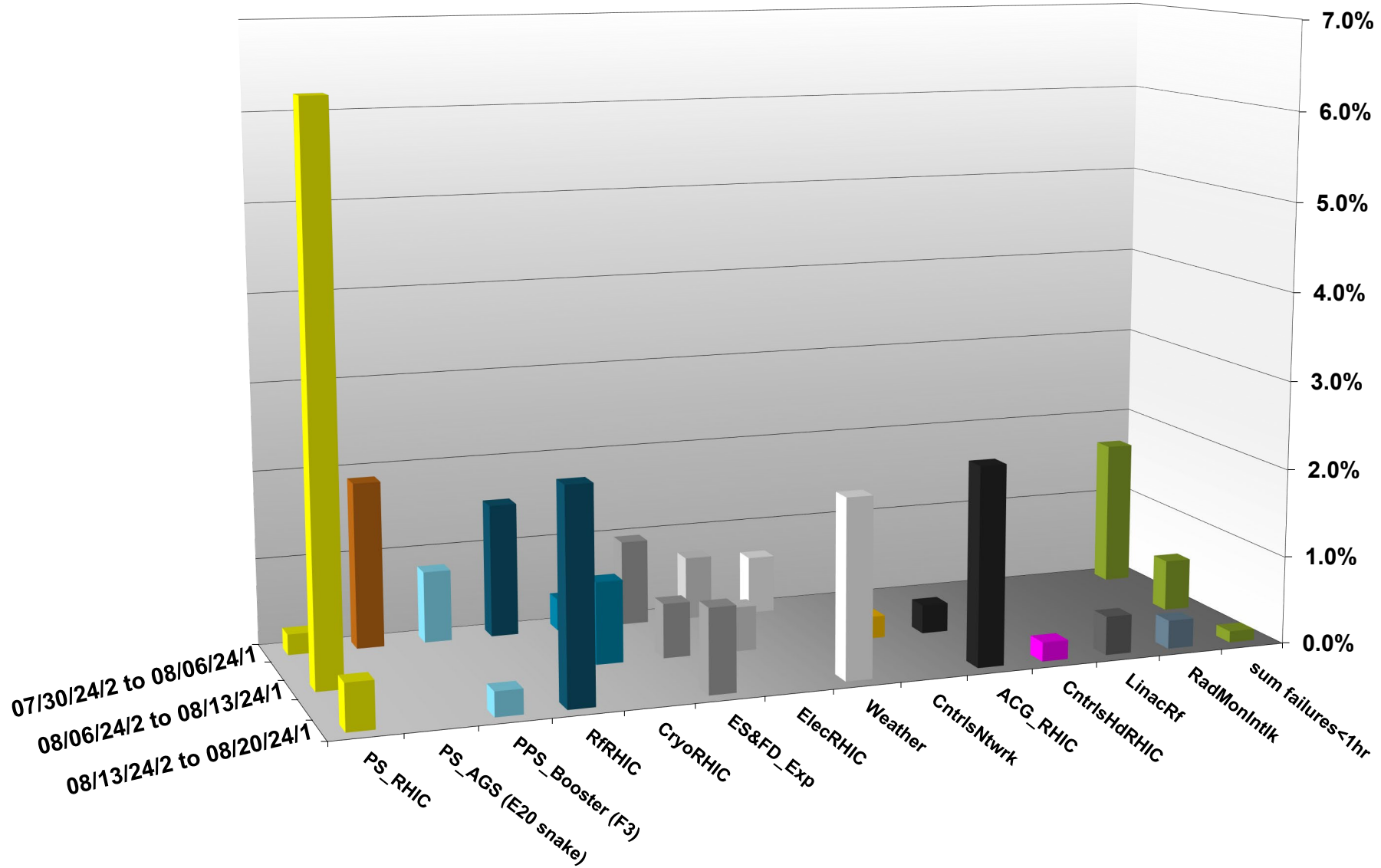


# C-AD ACTIVITY AUGUST 2024



# INTEGRATED FAILURES (GREATER THAN ONE HOUR) BY SYSTEM -- AUGUST 2024



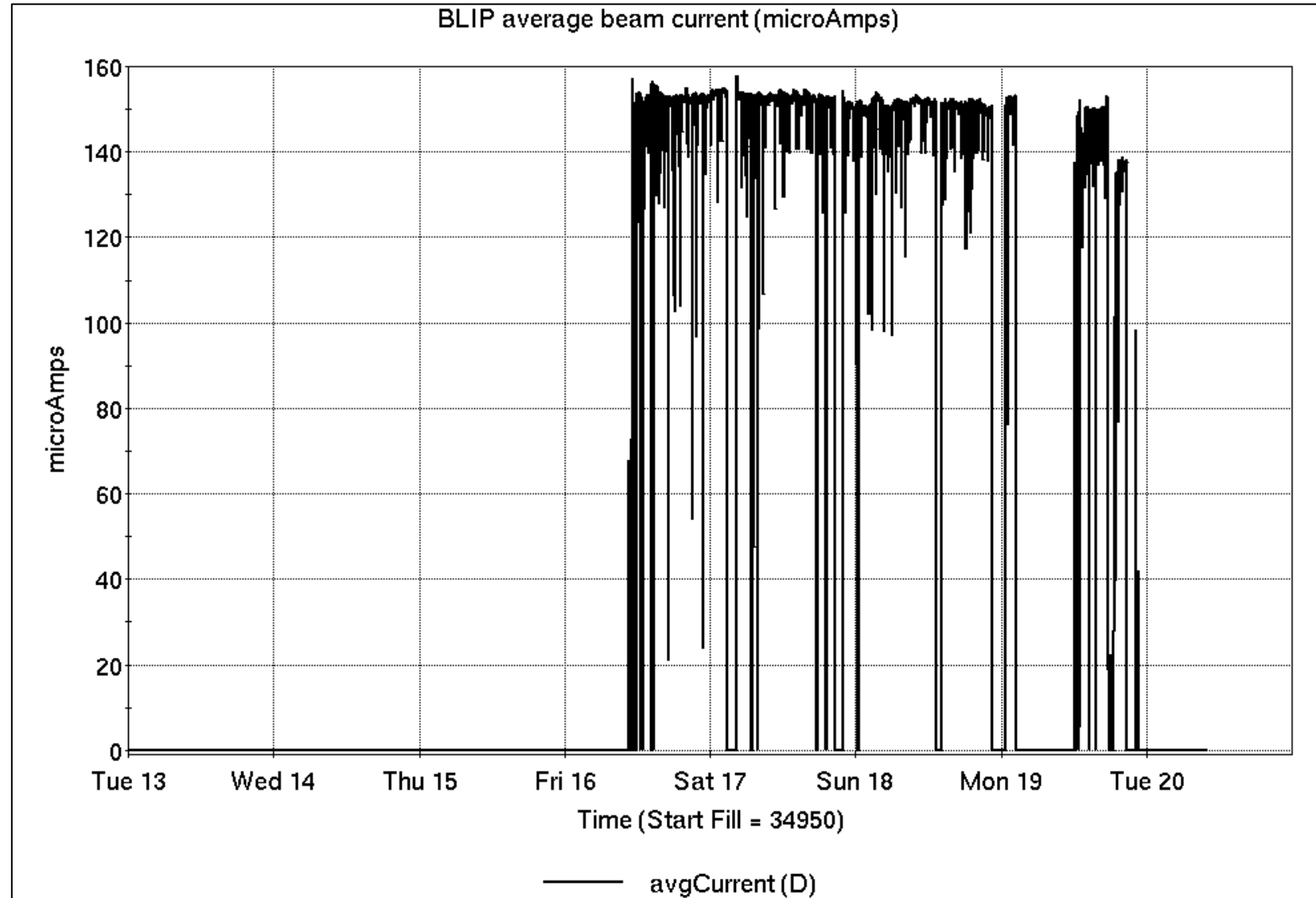
# Operations for BLIP

8/13-20/2024:

200 MeV Th target production began Friday, for a previously unscheduled production run.

- 63.85 hr Production
- 2.93 hr Setup
- 28.09 hr Failure

Availability: **70.4%**



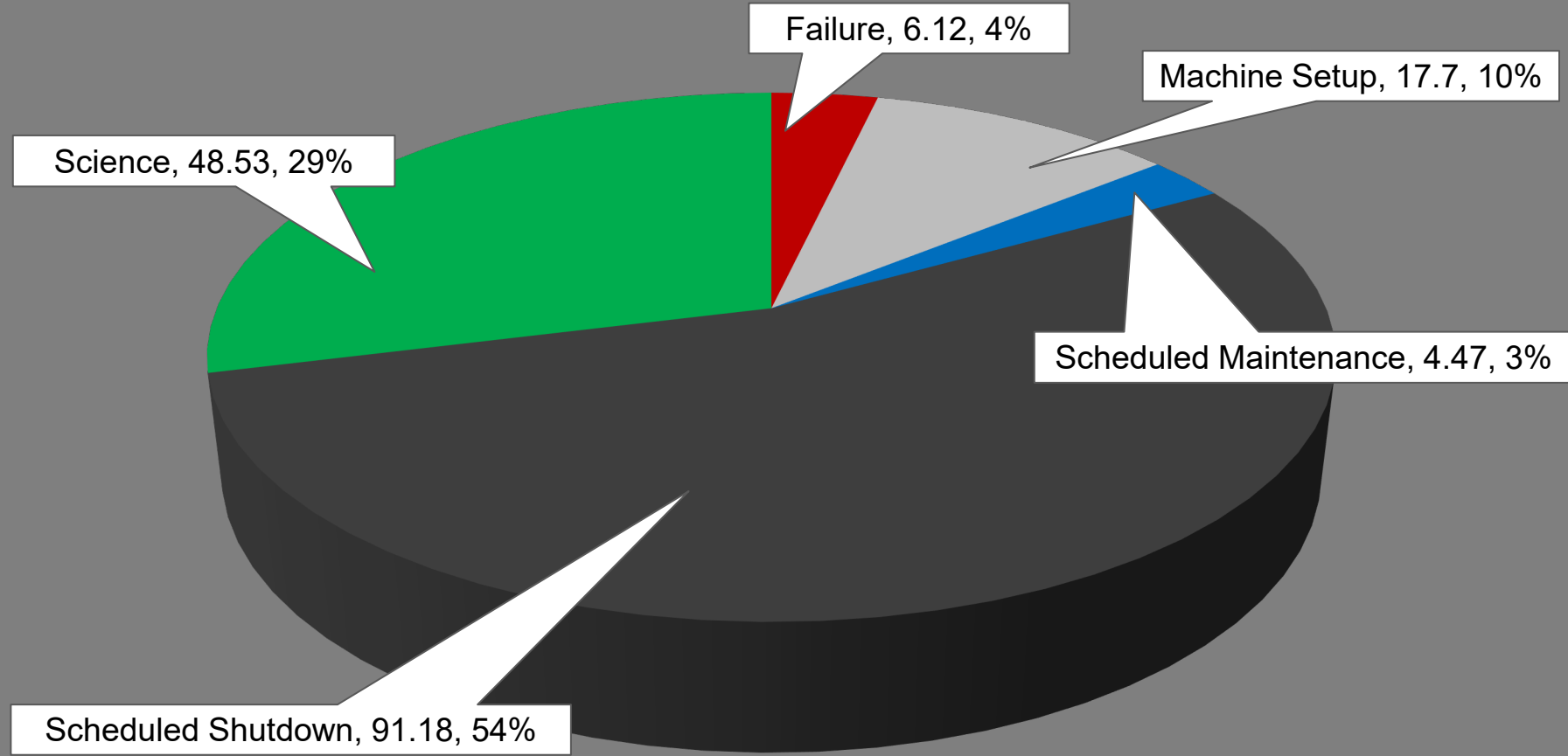
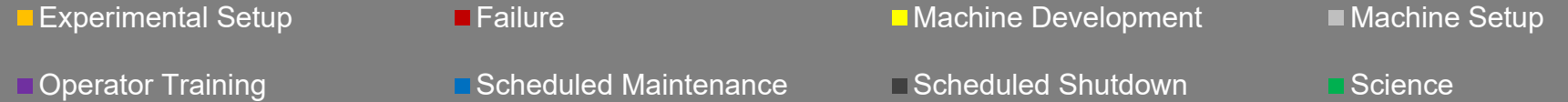
# NSRL activity past week: 8/13-20/2024 (as of 0800)

NSRL continues running for multiple users.

Linac protons, 8 EBIS ions in use.  
(Si, Ti, Fe, Nb, AG, Ta, Au, Bi)

Running 24-C schedule since 22 May. Schedule posted, **updates to 29 October** for beams & users until November shutdown.

## NSRL Hours



**Availability: 91.5%**

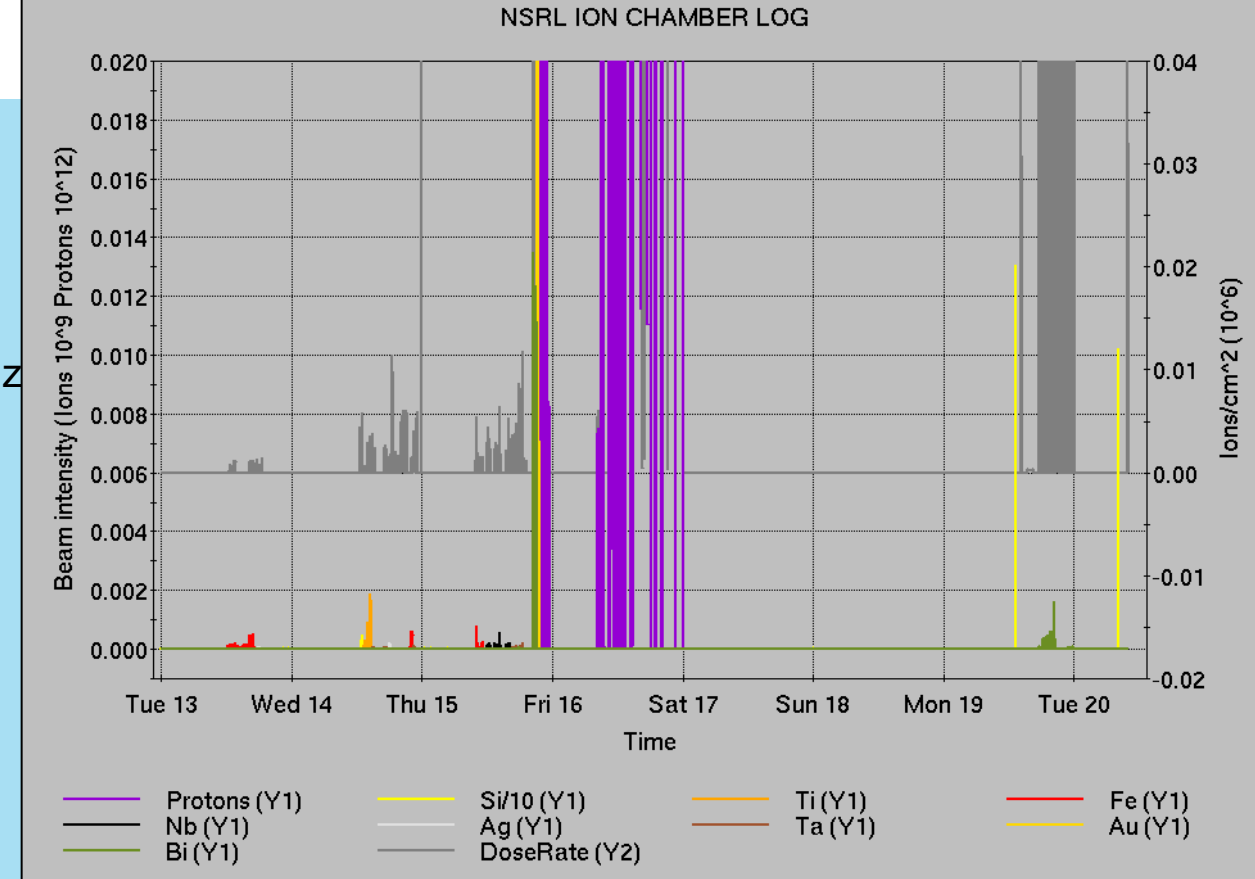
# Notes from Operations

## Notable failures (>1 hr)

- Access Controls failure, MCR interfaces failed due to central data server problems
- RHIC bo7-th4-ps failure post-maintenance, access to replace
- Booster D1 injection kicker PS failure, repairs to 100V DC PS
- STAR magnet PS trip, failed chiller reset
- Multiple RHIC RF trips/beam aborts, issues with 9, 28, & 197 MHz cavities; alternate Landau cavities not successful
- Controls failure for corrector PS, access to replace WFG board
- Multiple experiment access for detector failure
- Linac Mod 1 trip, reset (4x)
- Multiple weather stand-downs
- Water intrusion and flooding related to failure and delays for STAR chiller
- UPS failure incapacitates Access Controls system, all programs; additional hardware failures in Sector 6, NSRL; resweeps complex-wide
- Linac Mod 3 failure, 7835 tube replacement ongoing

## Other notes

- AGS tunemeter charging supply failure affects polarized beam tuning and development.
- AGS RF sta E controller issues, multiple resets
- AtR switching magnet cooling trip
- NMON failure/replacement (2x)
- AGS E20 warm snake trip, blower motor relay repaired
- Linac Mod 9 trip, 24V PS replaced for PLC.
- AGS RF station BC crowbar, repairs in progress behind store
- AGS cold snake LHe refill behind other failures and interruptions
- Other misc trips, resets



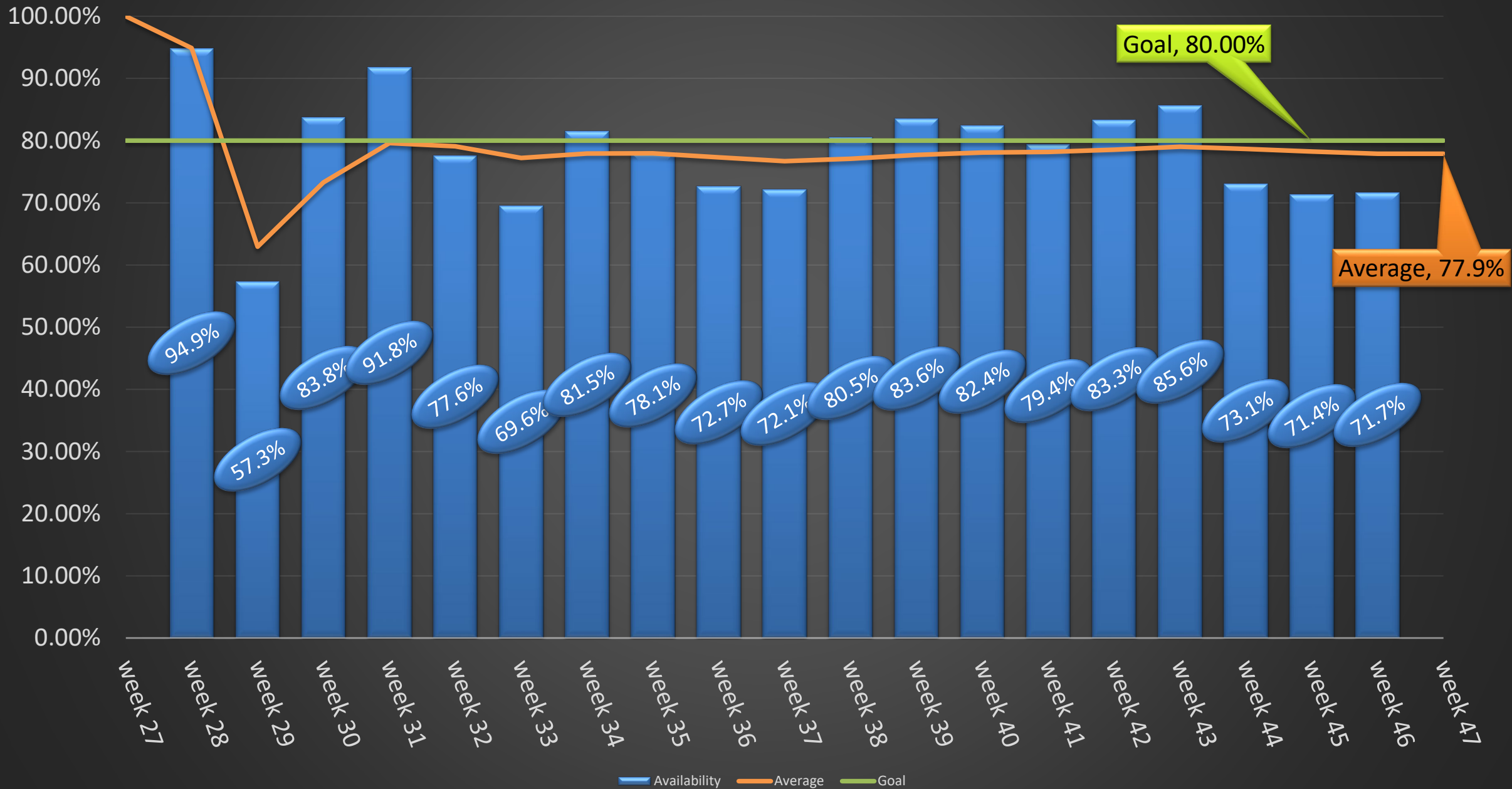
	Linac	Tandem	EBIS	Booster	AGS	ATR	RHIC	ERL	Other	Total
Total	6 (0)	63 (40)	1 (4)	15 (16)	250 (13)	13 (2)	16 (27)	0 (0)	30 (20)	394 (122)
RF	3 (0)	0 (0)	0 (0)	1 (0)	1 (0)	0 (0)	0 (0)	0 (0)	8 (9)	13 (9)
PS	1 (0)	58 (6)	1 (4)	3 (0)	219 (6)	4 (2)	10 (5)	0 (0)	0 (1)	296 (24)
Vacuum	2 (0)	5 (32)	0 (0)	5 (15)	24 (0)	2 (0)	1 (17)	0 (0)	13 (7)	52 (71)
Inst	0 (0)	0 (2)	0 (0)	1 (0)	0 (2)	5 (0)	1 (3)	0 (0)	2 (3)	9 (10)
Other	0 (0)	0 (0)	0 (0)	5 (1)	6 (5)	2 (0)	4 (2)	0 (0)	7 (0)	24 (8)

Tue Aug 20 11:04:31 EDT 2024

# Reminder from Operations

- MCR continues Operations for:
  - BLIP – present run throughout the week; further production TBD.
  - NSRL – users scheduled to run Mon-Fri this week; Mon-Sat next.
    - EBIS proton tests pending USI.
  - AGS/Booster setups continue, additional to RHIC physics.
    - Injector Au setup as yet untested. Anticipated 3 September.
    - Skew quad & other polarized beam setups continue with limited instrumentation.
  - RHIC beam for Physics stores.
    - Other MD, Maintenance, APEX as noted in schedule
- CHECK YOUR CALLIN LIST: WCC and ECP updates needed
  - Initial failure response often involves ECP consult. Ensure your Group callin list contains this information.
  - Callin lists should be accurate in terms of personnel and time off.
  - [https://www.cadops.bnl.gov/Operations/personnel/call\\_in\\_lists/](https://www.cadops.bnl.gov/Operations/personnel/call_in_lists/)
  - Note: Core Electrical contacts listed/managed on ESSHQ callin list  
[https://www.cadops.bnl.gov/Operations/personnel/call\\_in\\_lists/call\\_in\\_list.php?group=esshq](https://www.cadops.bnl.gov/Operations/personnel/call_in_lists/call_in_list.php?group=esshq)
- CHECK AND EDIT YOUR OWN CONTACT INFO
  - <http://directory.pbn.bnl.gov/>

# Availability: RHIC Run-24



# Mean Time Between Failure, Mean Time To Repair, Average Failure Hours per Day (cryo start to cryo end date)

