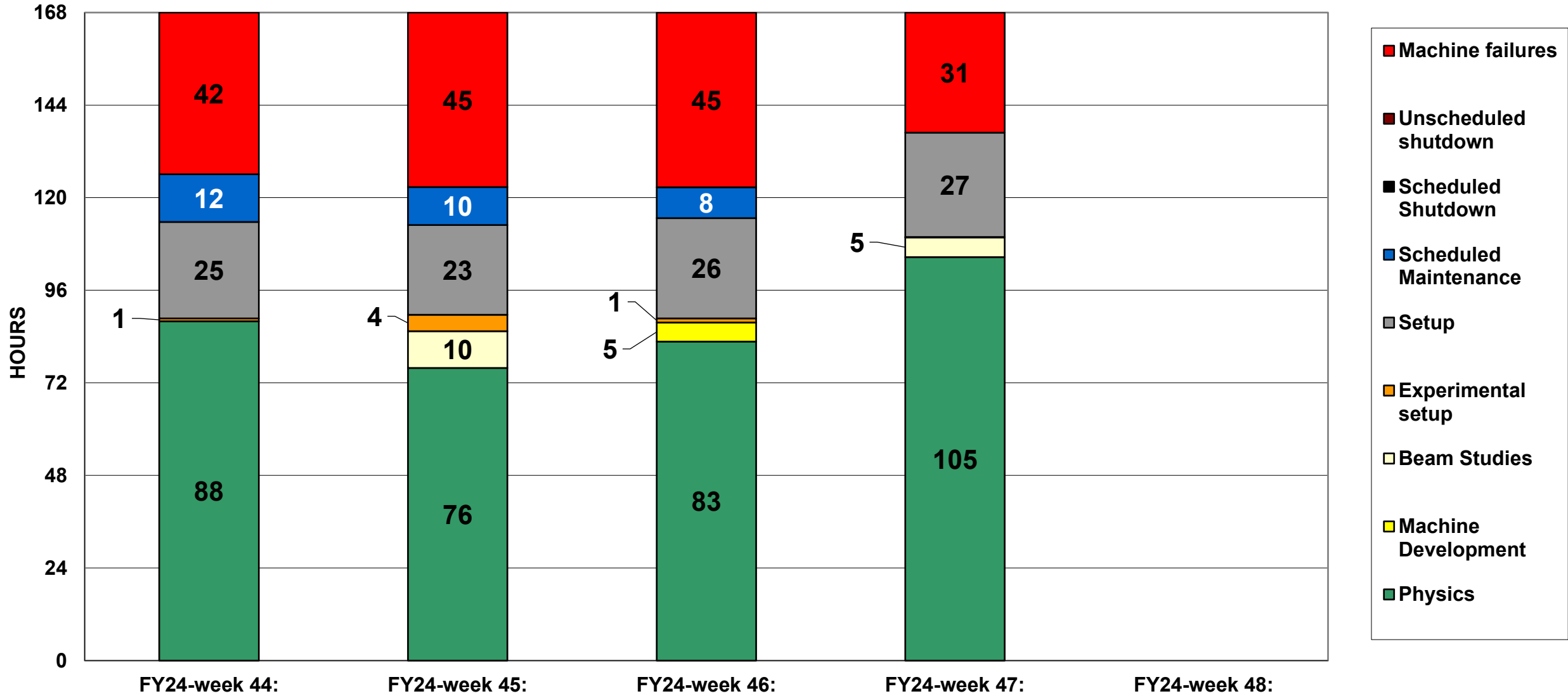
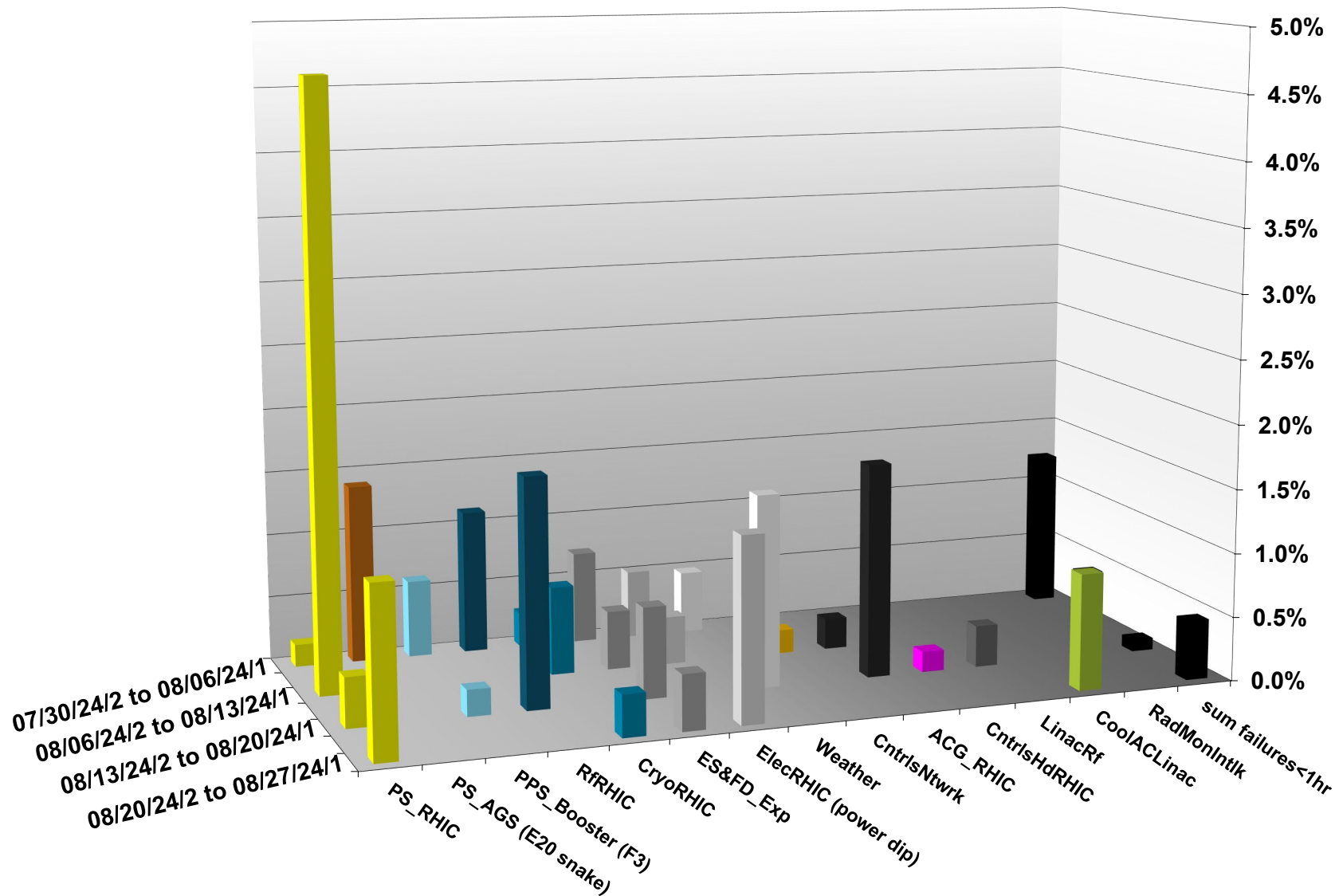


C-AD ACTIVITY AUGUST 2024



INTEGRATED FAILURES (GREATER THAN ONE HOUR) BY SYSTEM -- AUGUST 2024



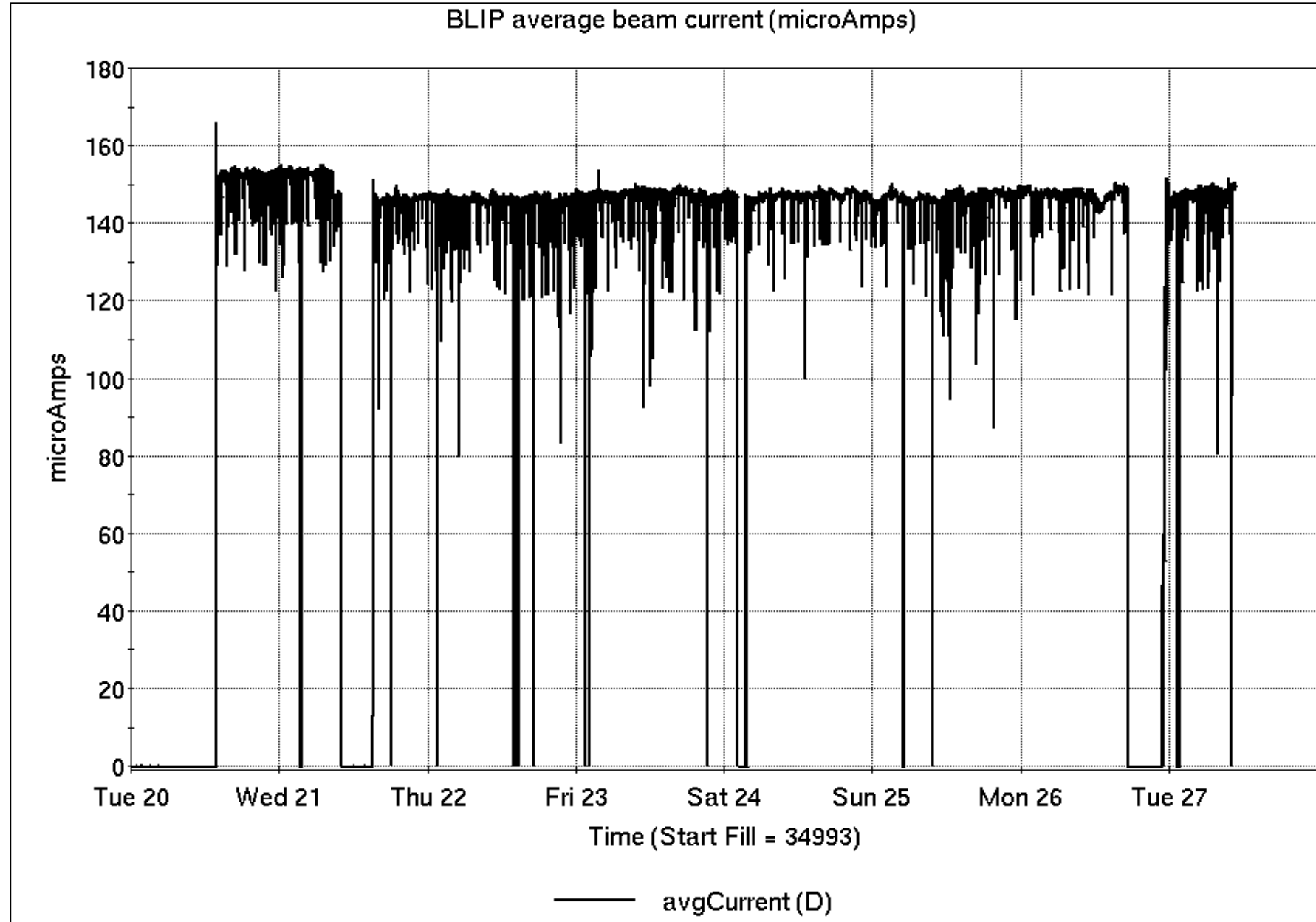
Operations for BLIP

8/20-27/2024:

200 MeV Th target production continued throughout the week.

- 148.7 hr Production
- 19.3 hr Failure

Availability: **88.5%**



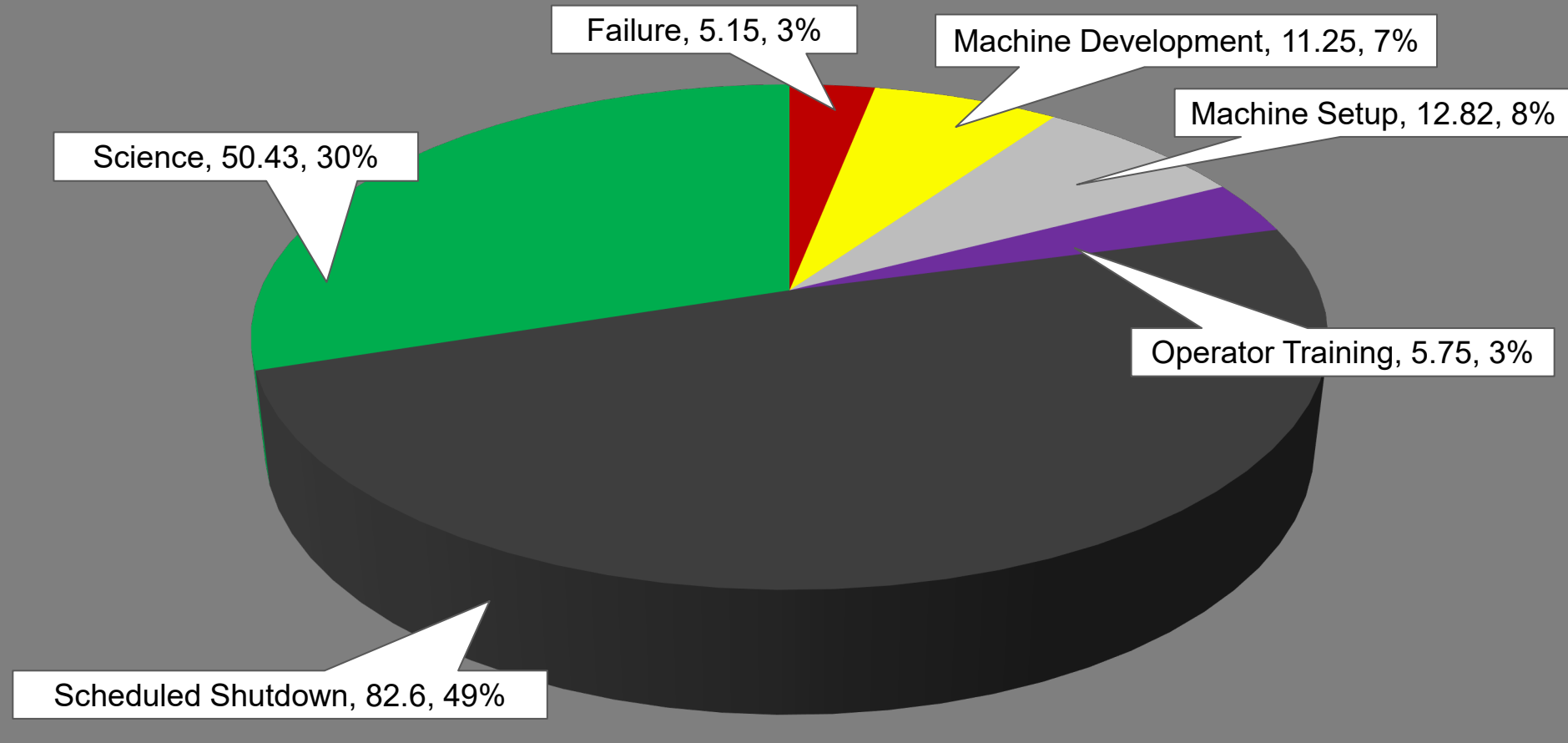
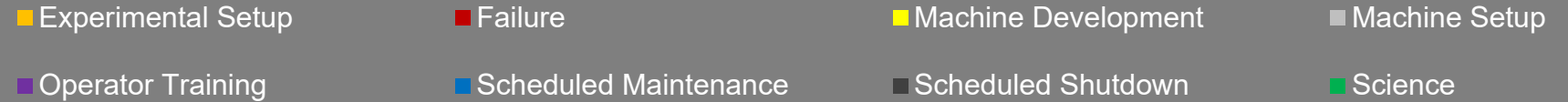
NSRL activity past week: 8/20-27/2024 (as of 0800)

NSRL continues running for multiple users.

Linac protons, 9 EBIS ions in use.
(Si, Ti, Fe, Nb, Ag, Tb, Ta, Au, Bi)

Running 24-C schedule since 22 May. Schedule posted, **updates to 29 October** for beams & users until November shutdown.

NSRL Hours



Availability: 94%

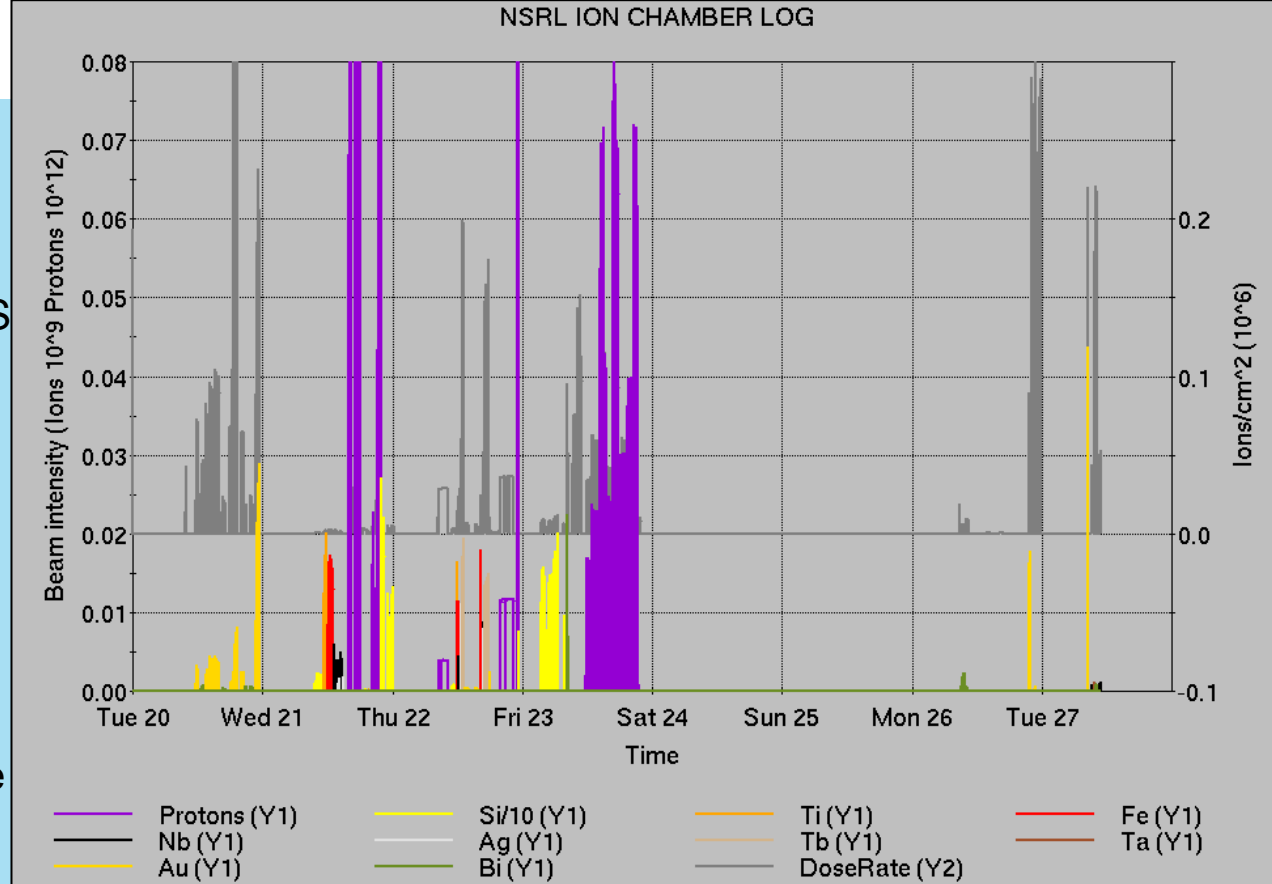
Notes from Operations

Notable failures (>1 hr)

- Linac Mod 3 failure, 7835 tube replacement completed
- Cryo lead flow interlock, 11Q14 thermistor card replaced
- Steam leak in 930LEB prevents operation of Tank 1 quad PS
- RHIC CPSBPS beam abort (4x), system failure from faulty node card
- Experiment access
- Linac Mod 5 RF failure, PLC input module replaced
- Stand-down for severe weather, affecting all programs
- Power dip during stand-down, affecting all programs and many accelerator/experiment systems
- Linac Mod 4 RF failure, leak repaired on 7835 PS
- RHIC orbit feedback system failure, resets to BPM hardware

Other notes

- AGS tunemeter charging supply back in service
- AGS RF sta BC access/repair completed behind store
- Multiple STAR magnet PS trip/reset
- sPHENIX magnet trip, flow switch failure
- Booster corrector PS water leak, replaced PS
- AGS polarimeter failure, reset/reprogrammed
- Other misc trips, resets



	Linac	Tandem	EBIS	Booster	AGS	ATR	RHIC	ERL	Other	Total
Total	6 (0)	28 (149)	2 (4)	13 (8)	4 (9)	8 (0)	17 (14)	0 (0)	47 (17)	125 (201)
RF	0 (0)	0 (0)	1 (0)	1 (0)	0 (0)	0 (0)	0 (0)	0 (0)	19 (8)	21 (8)
PS	1 (0)	24 (119)	1 (4)	1 (0)	2 (2)	1 (0)	11 (3)	0 (0)	1 (1)	42 (129)
Vacuum	4 (0)	4 (28)	0 (0)	8 (7)	0 (0)	0 (0)	2 (6)	0 (0)	13 (5)	31 (46)
Inst	0 (0)	0 (2)	0 (0)	1 (0)	0 (2)	7 (0)	0 (3)	0 (0)	8 (3)	16 (10)
Other	1 (0)	0 (0)	0 (0)	2 (1)	2 (5)	0 (0)	4 (2)	0 (0)	6 (0)	15 (8)

Reminder from Operations

- MCR continues Operations for:
 - BLIP – present run completes this week, end **TBD based on failure time**; additional run starts 3 September.
 - NSRL – users scheduled to run Mon-Fri this week; Mon-Sat next.
 - **EBIS proton tests in Booster require unique setup.**
 - AGS/Booster setups continue, additional to RHIC physics.
 - Injector **Au setup as yet untested**. Anticipated 3 September.
 - Skew quad & **other polarized beam setups continue** as beam time allows.
 - RHIC beam for Physics stores.
 - Other MD, Maintenance, APEX as noted in schedule
- CHECK YOUR CALLIN LIST: **WCC** and **ECP** updates needed
 - **Initial failure response often involves ECP consult. Ensure your Group callin list contains this information.**
 - **Callin lists should be accurate in terms of personnel and time off.**
 - https://www.cadops.bnl.gov/Operations/personnel/call_in_lists/
 - Note: **Core Electrical contacts listed/managed on ESSHQ callin list**
https://www.cadops.bnl.gov/Operations/personnel/call_in_lists/call_in_list.php?group=esshq
- CHECK AND EDIT YOUR OWN CONTACT INFO
 - <http://directory.pbn.bnl.gov/>

Availability: RHIC Run-24

