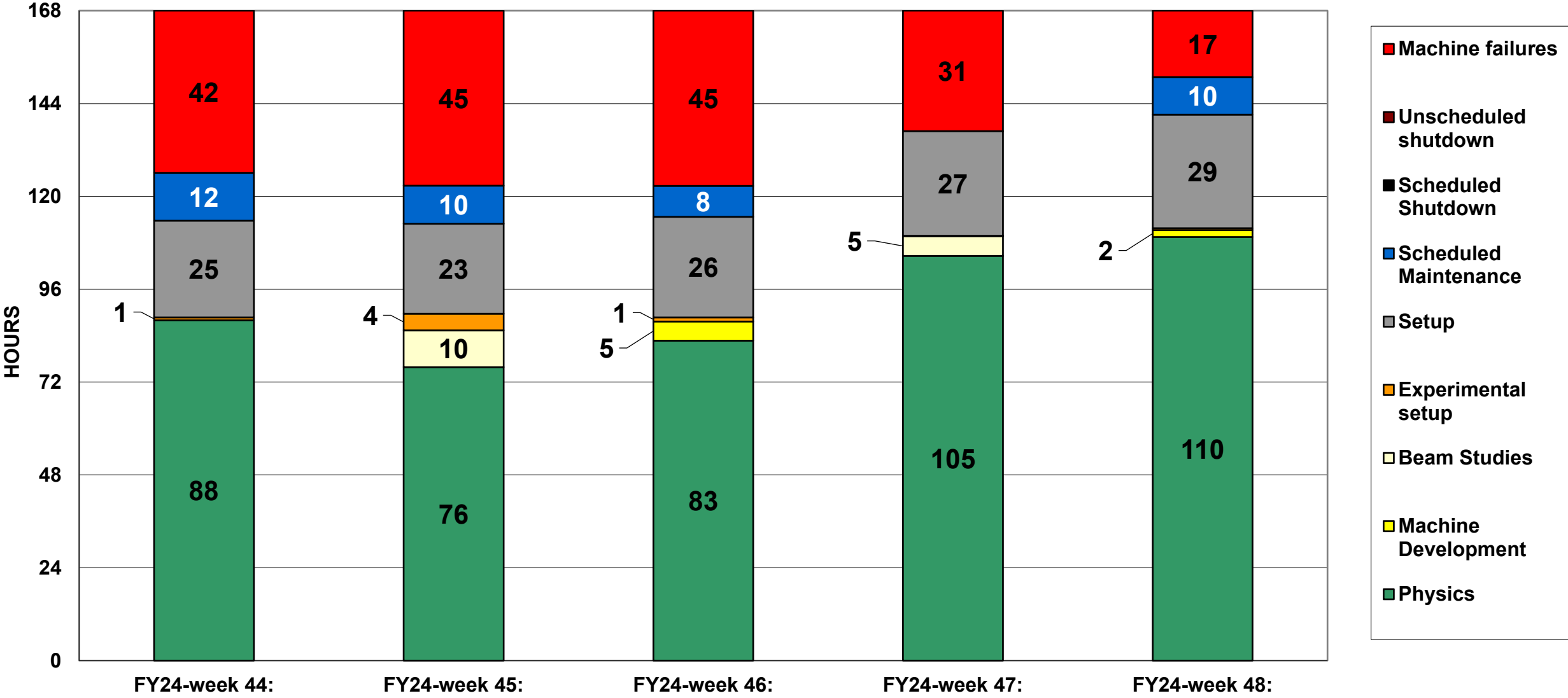
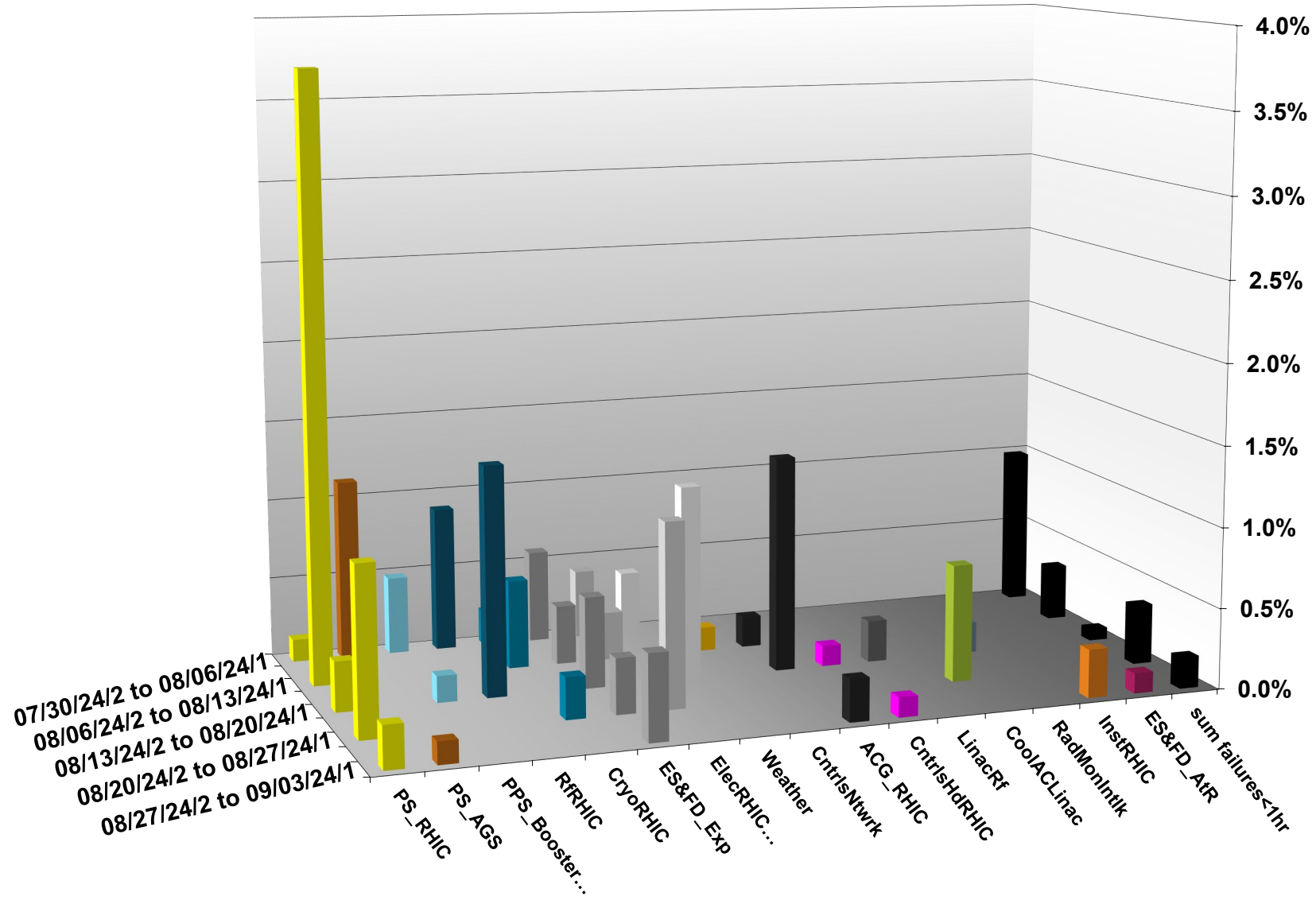


# C-AD ACTIVITY AUGUST 2024



# INTEGRATED FAILURES (GREATER THAN ONE HOUR) BY SYSTEM -- AUGUST 2024



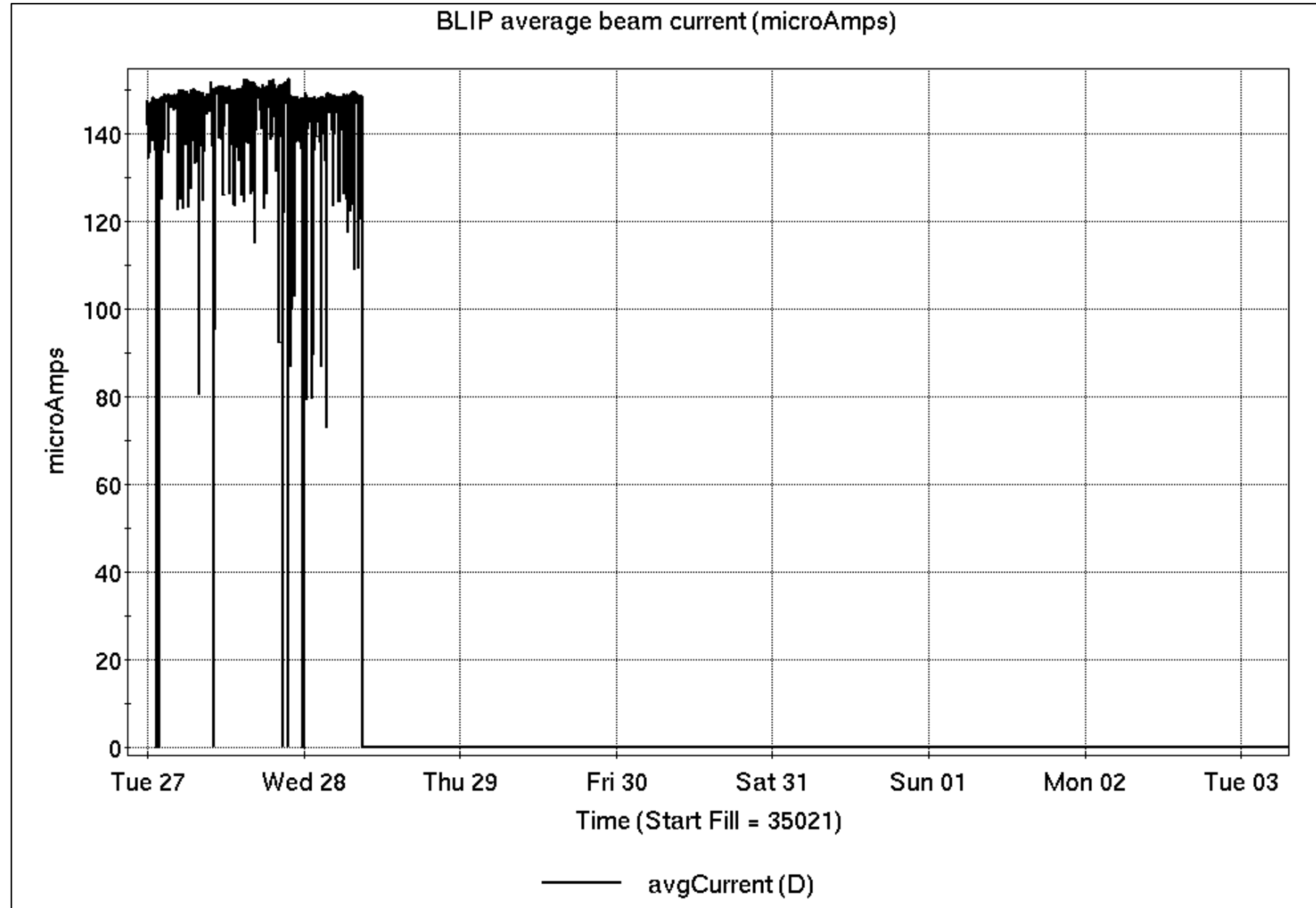
# Operations for BLIP

8/27-9/3/2024:

200 MeV Th target production concluded early in the week.

- 24.63 hr Production
- 0.37 hr Failure

Availability: 98.5%



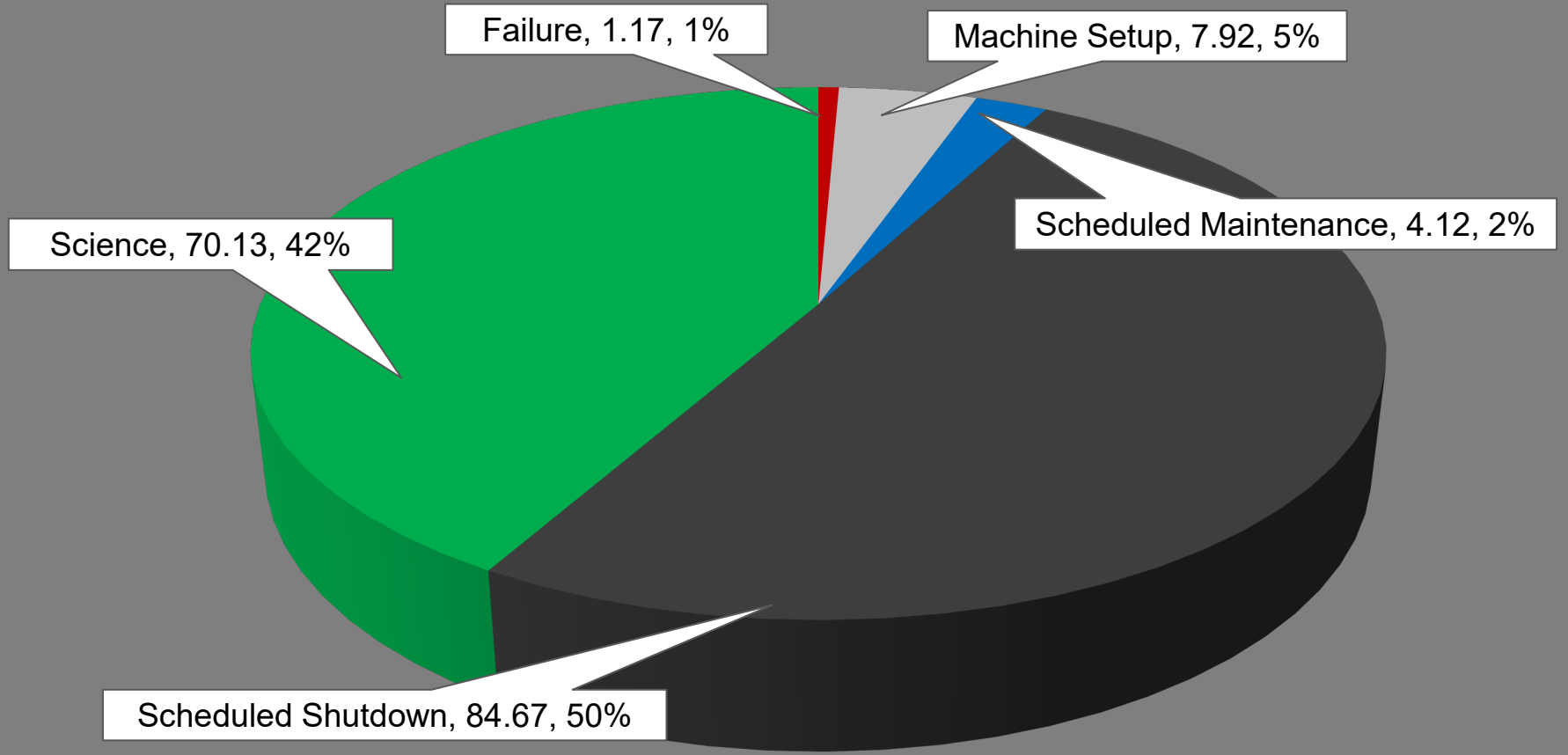
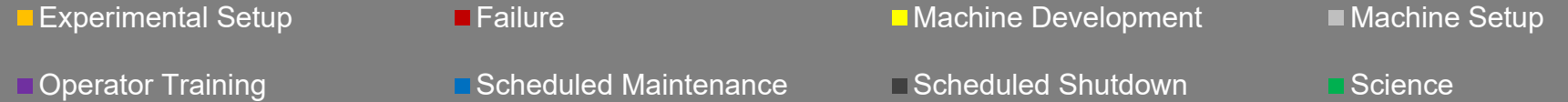
# NSRL activity past week: 8/27-9/3/2024 (as of 0800)

NSRL continues running for multiple users.

8 EBIS ions in use.  
(Si, Ti, Nb, Ag, Tb, Ta, Au, Bi)

Running 24-C schedule since 22 May. Schedule posted, **updates to 29 October** for beams & users until November shutdown.

## NSRL Hours



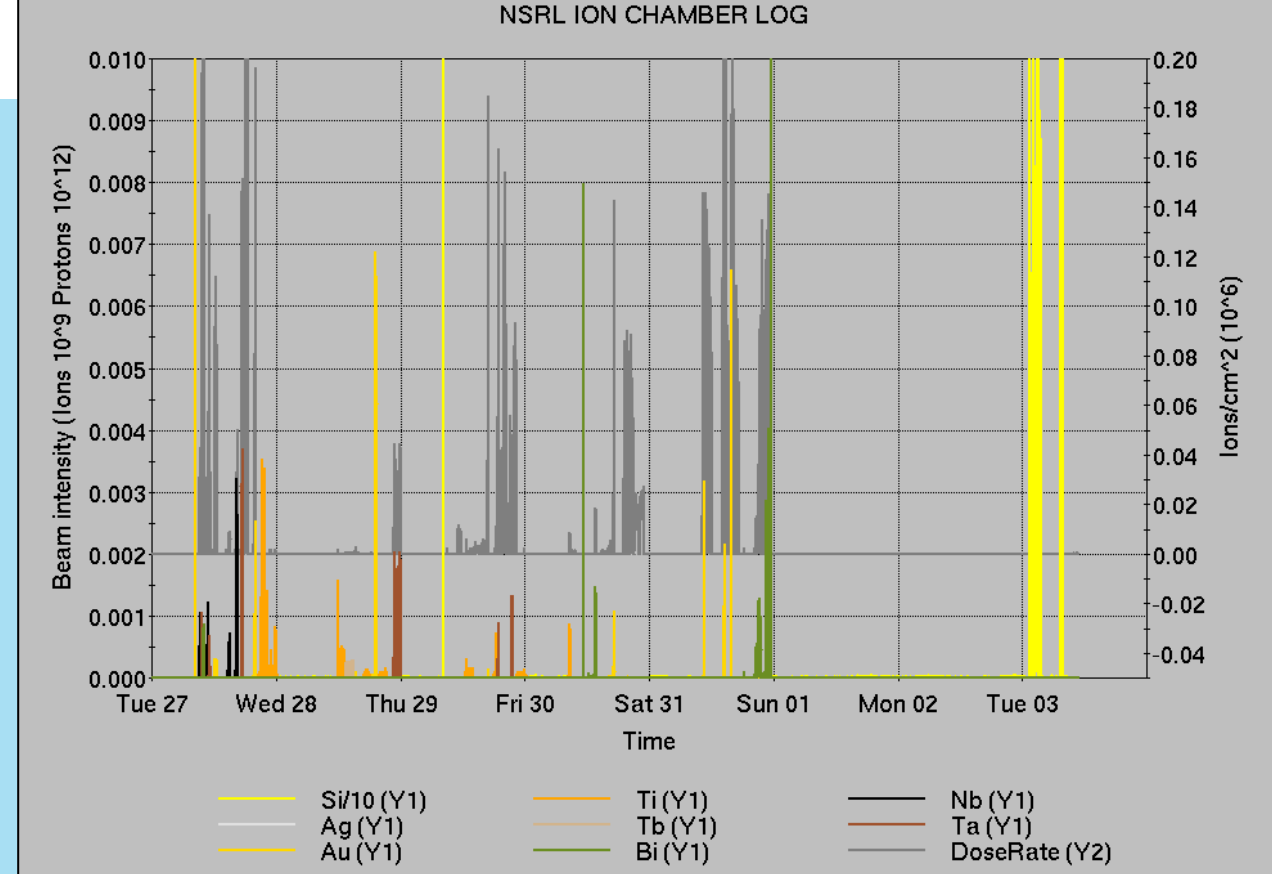
# Notes from Operations

## Notable failures (>1 hr)

- Beam abort/Blue QLI, Blue main dipole required breaker reset
- Access for experiment failures (3x)
- AGS horiz. chromaticity PS trips, filters & ground fault limits adjusted
- Yellow vert. IPM failure requires TSP flash/recovery by Vacuum Group
- Yellow rotator QLI on down ramp, undiagnosed
- Sector 8 ACS failure into Safe Access
- NSRL species change errors, supercycle modified

## Other notes

- Beam abort, 9a-bpm1 FEC errors
- STAR magnet PS trips at injection, ramp
- Beam abort, Yellow Y9-3 RF failure, water flow trip
- Linac ACS failure into Safe Access; "master timing" relays reset
- AGS RF station BC trip (2x), repairs behind store or with spare station deployed
- sPHENIX PLC handshake failure
- Beam abort, BBQ lost lock during rotator ramp
- Beam abort, loss monitor at end of rotator ramp
- AtR swm PS cooling fault, filter/PLC work
- Linac source intensity issues; Rb refilled
- Other misc trips, resets

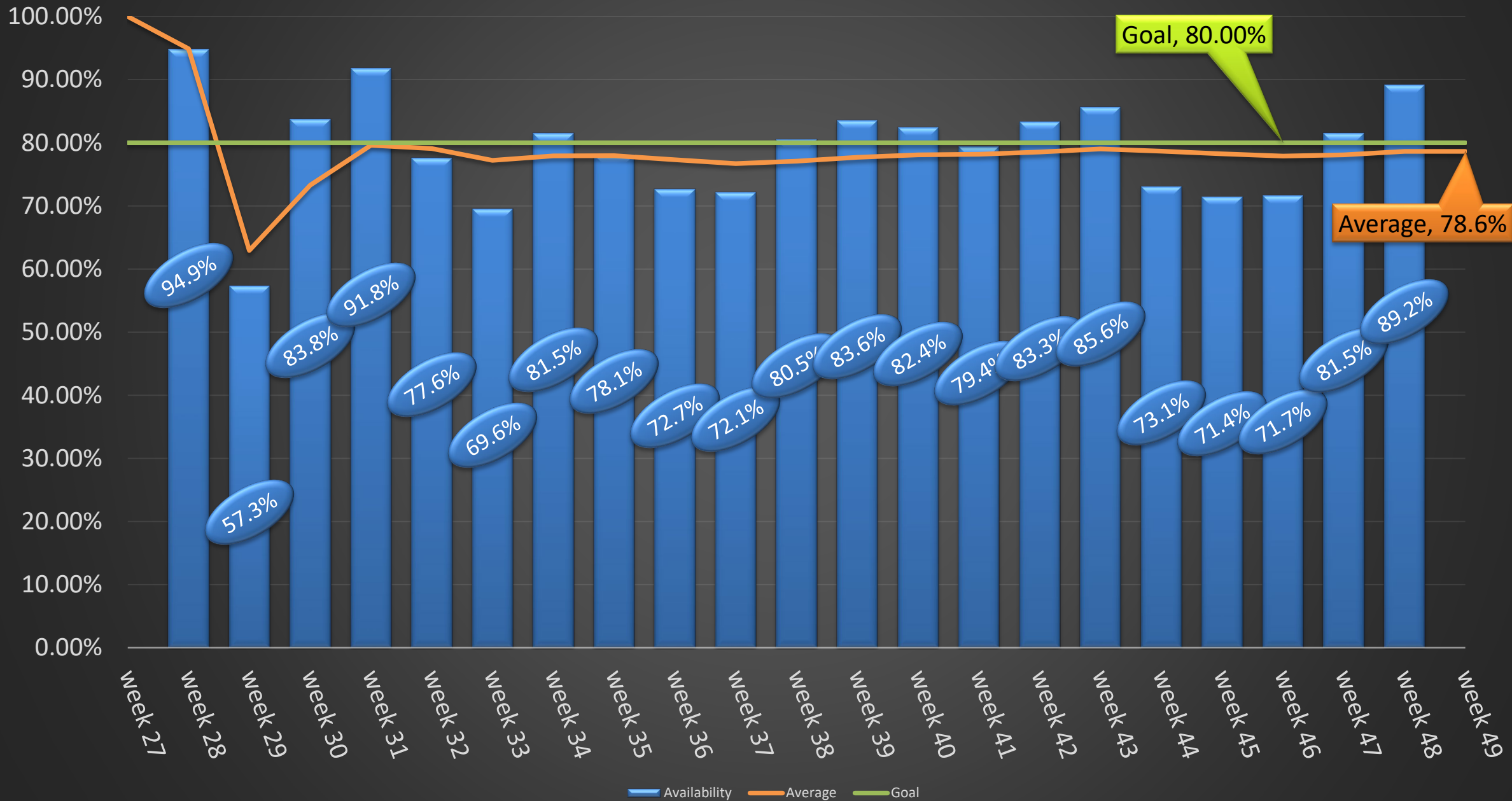


	Linac	Tandem	EBIS	Booster	AGS	ATR	RHIC	ERL	Other	Total
Total	6 (0)	1 (165)	3 (4)	8 (11)	4 (9)	21 (0)	10 (14)	0 (0)	44 (17)	97 (220)
RF	0 (0)	0 (0)	0 (0)	1 (0)	2 (0)	0 (0)	0 (0)	0 (0)	19 (8)	22 (8)
PS	1 (0)	0 (132)	1 (4)	1 (0)	2 (2)	2 (0)	4 (3)	0 (0)	0 (1)	11 (142)
Vacuum	4 (0)	1 (31)	0 (0)	5 (10)	0 (0)	0 (0)	1 (6)	0 (0)	13 (5)	24 (52)
Inst	0 (0)	0 (2)	0 (0)	0 (0)	0 (2)	19 (0)	0 (3)	0 (0)	4 (3)	23 (10)
Other	1 (0)	0 (0)	2 (0)	1 (1)	0 (5)	0 (0)	5 (2)	0 (0)	8 (0)	17 (8)

# Reminder from Operations

- MCR continues Operations for:
  - BLIP – run starts today, through 6 September.
  - NSRL – users scheduled to run Mon-Fri this week; Mon-Sat next.
    - EBIS proton tests in Booster require unique setup.
  - AGS/Booster setups continue, additional to RHIC physics.
    - Injector Au setup as yet untested. Anticipated 16 September.
    - Skew quad & other polarized beam setups continue as beam time allows.
  - RHIC beam for Physics stores.
    - Other MD, Maintenance, APEX as noted in schedule
- CHECK YOUR CALLIN LIST: WCC and ECP updates needed
  - Initial failure response often involves ECP consult. Ensure your Group callin list contains this information.
  - Callin lists should be accurate in terms of personnel and time off.
  - [https://www.cadops.bnl.gov/Operations/personnel/call\\_in\\_lists/](https://www.cadops.bnl.gov/Operations/personnel/call_in_lists/)
  - Note: Core Electrical contacts listed/managed on ESSHQ callin list  
[https://www.cadops.bnl.gov/Operations/personnel/call\\_in\\_lists/call\\_in\\_list.php?group=esshq](https://www.cadops.bnl.gov/Operations/personnel/call_in_lists/call_in_list.php?group=esshq)
- CHECK AND EDIT YOUR OWN CONTACT INFO
  - <http://directory.pbn.bnl.gov/>

# Availability: RHIC Run-24



# Mean Time Between Failure, Mean Time To Repair, Average Failure Hours per Day (cryo start to cryo end date)

