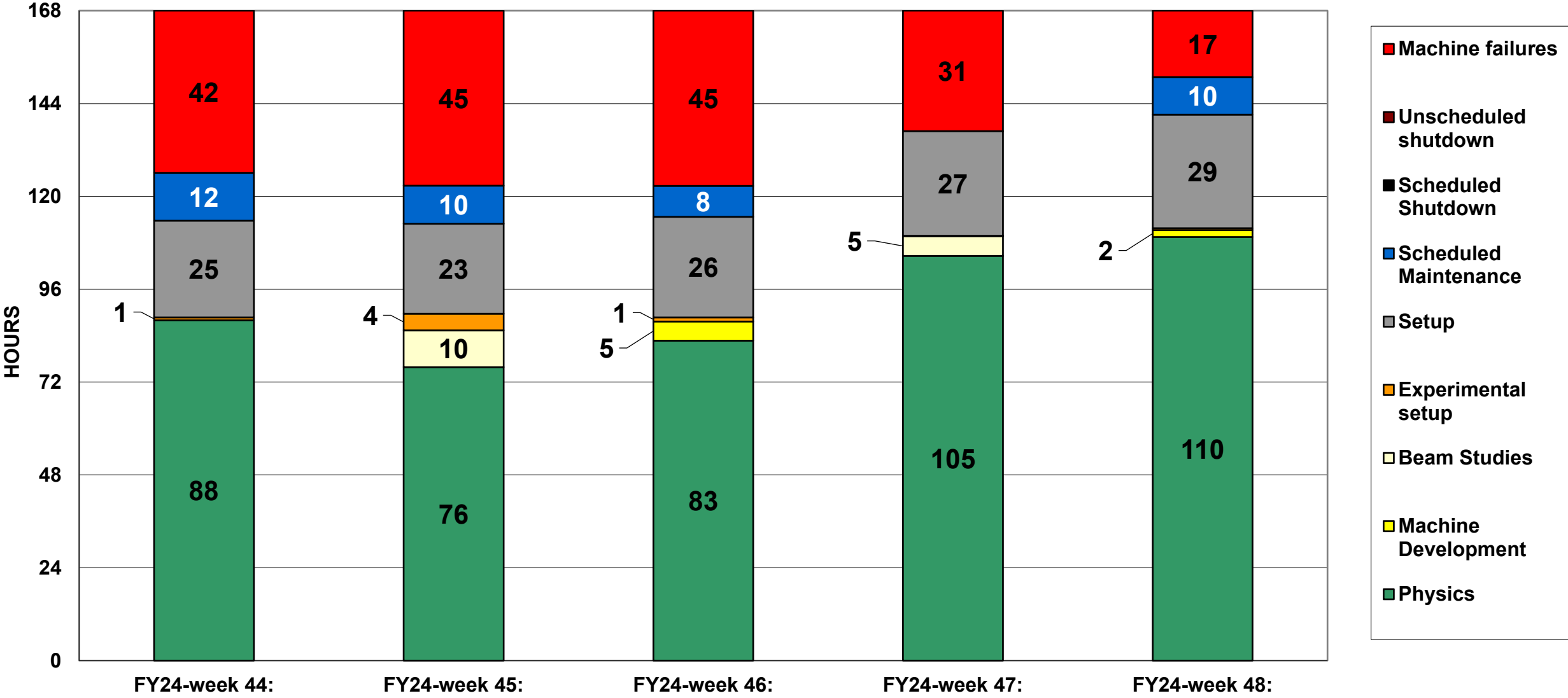
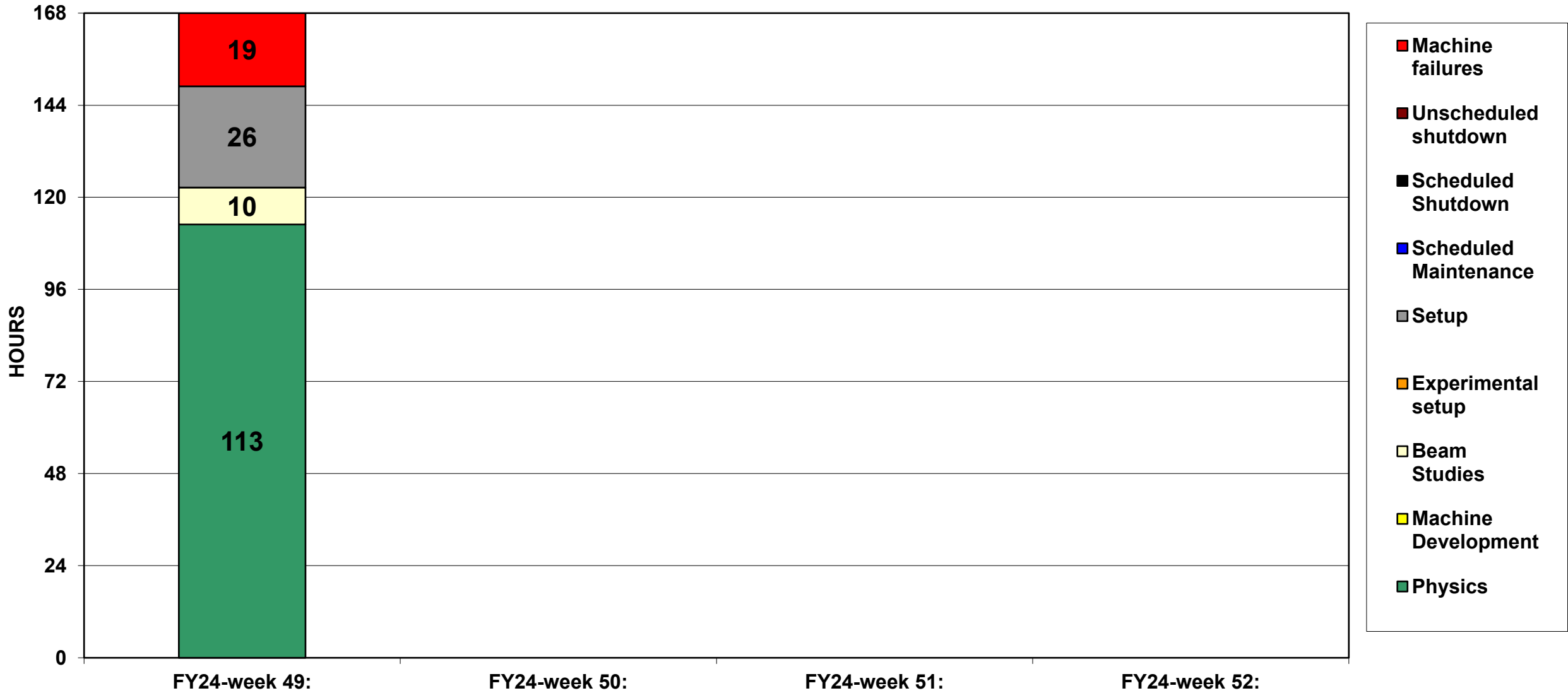


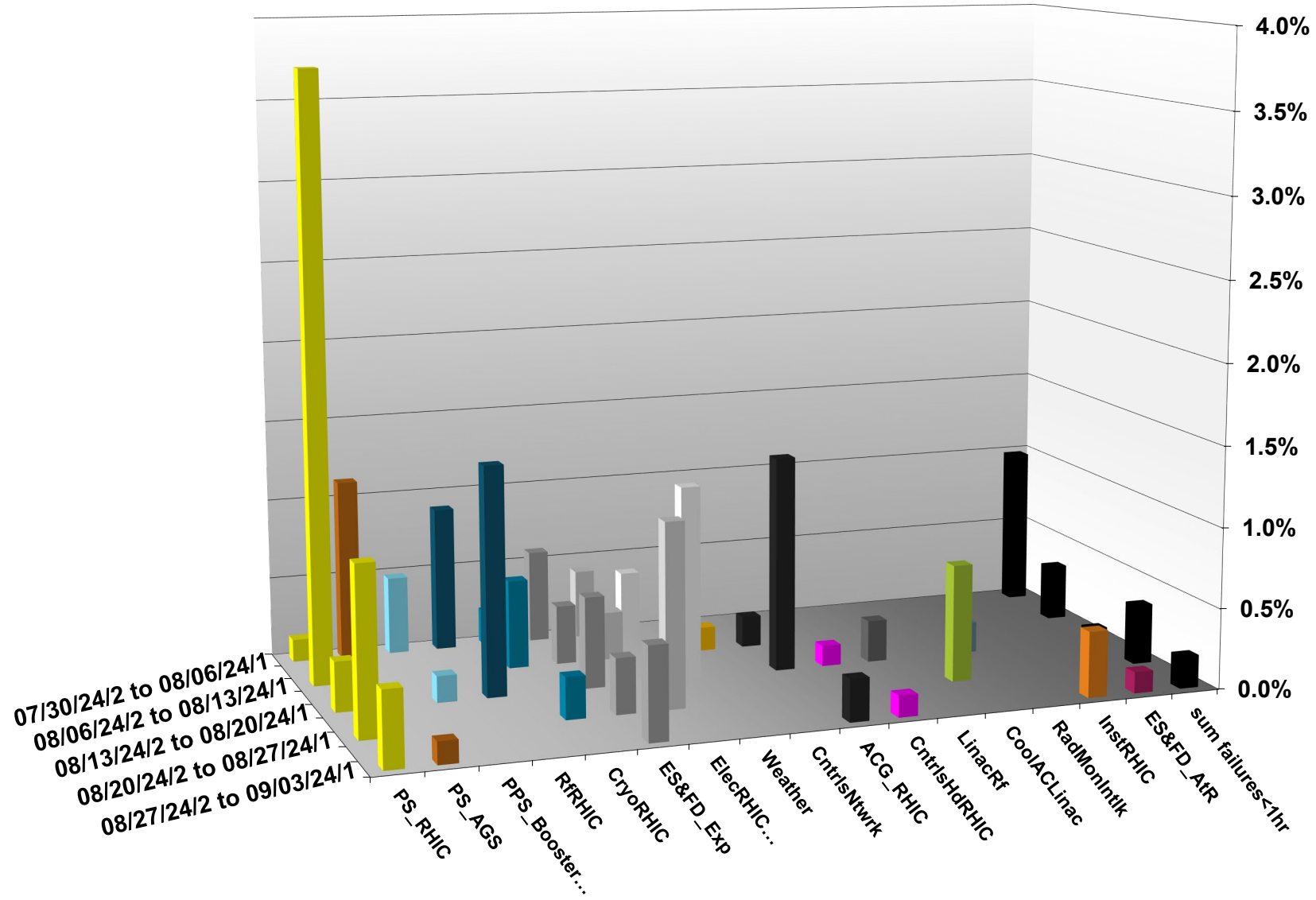
C-AD ACTIVITY AUGUST 2024



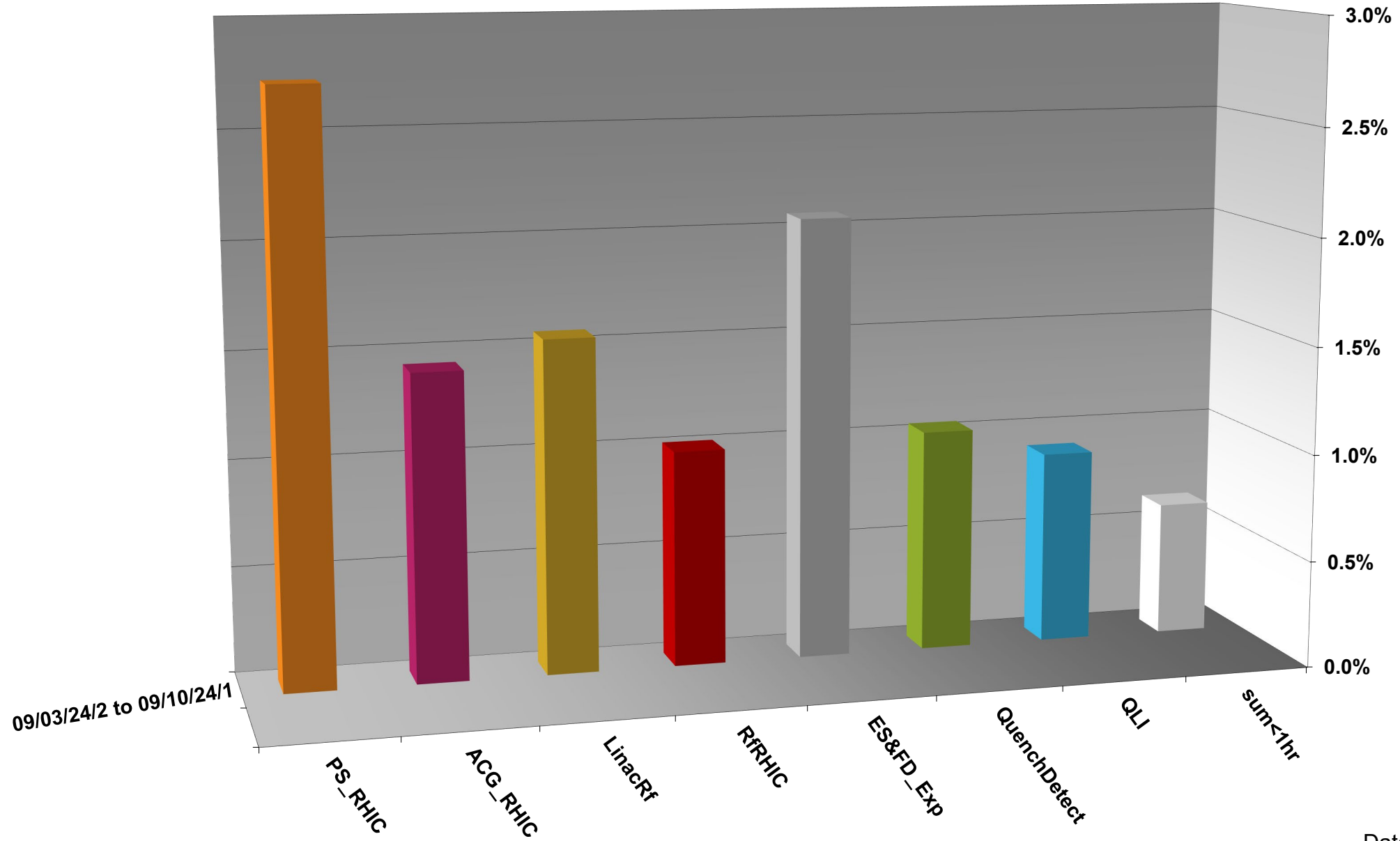
C-AD ACTIVITY SEPTEMBER 2024



INTEGRATED FAILURES (GREATER THAN ONE HOUR) BY SYSTEM -- AUGUST 2024



INTEGRATED FAILURES (GREATER THAN ONE HOUR) BY SYSTEM - SEPTEMBER 2024



Data courtesy C. Naylor

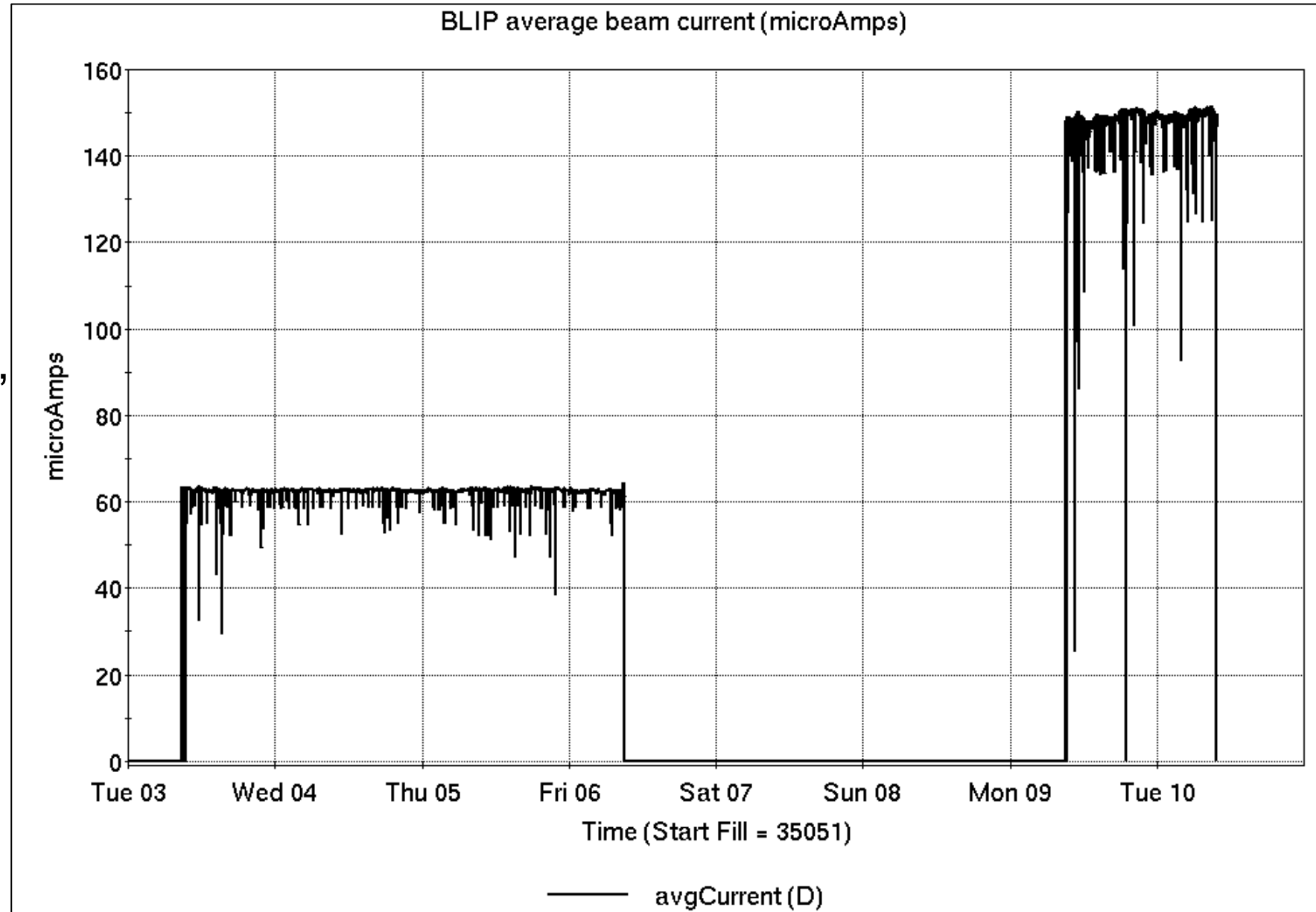
Operations for BLIP

9/3-10/2024:

117 MeV La target production set up and run during the week, followed by additional 200 MeV Th target run, ongoing.

- 1.52 hr Setup
- 94.22 hr Production
- No failures

Availability: 100%



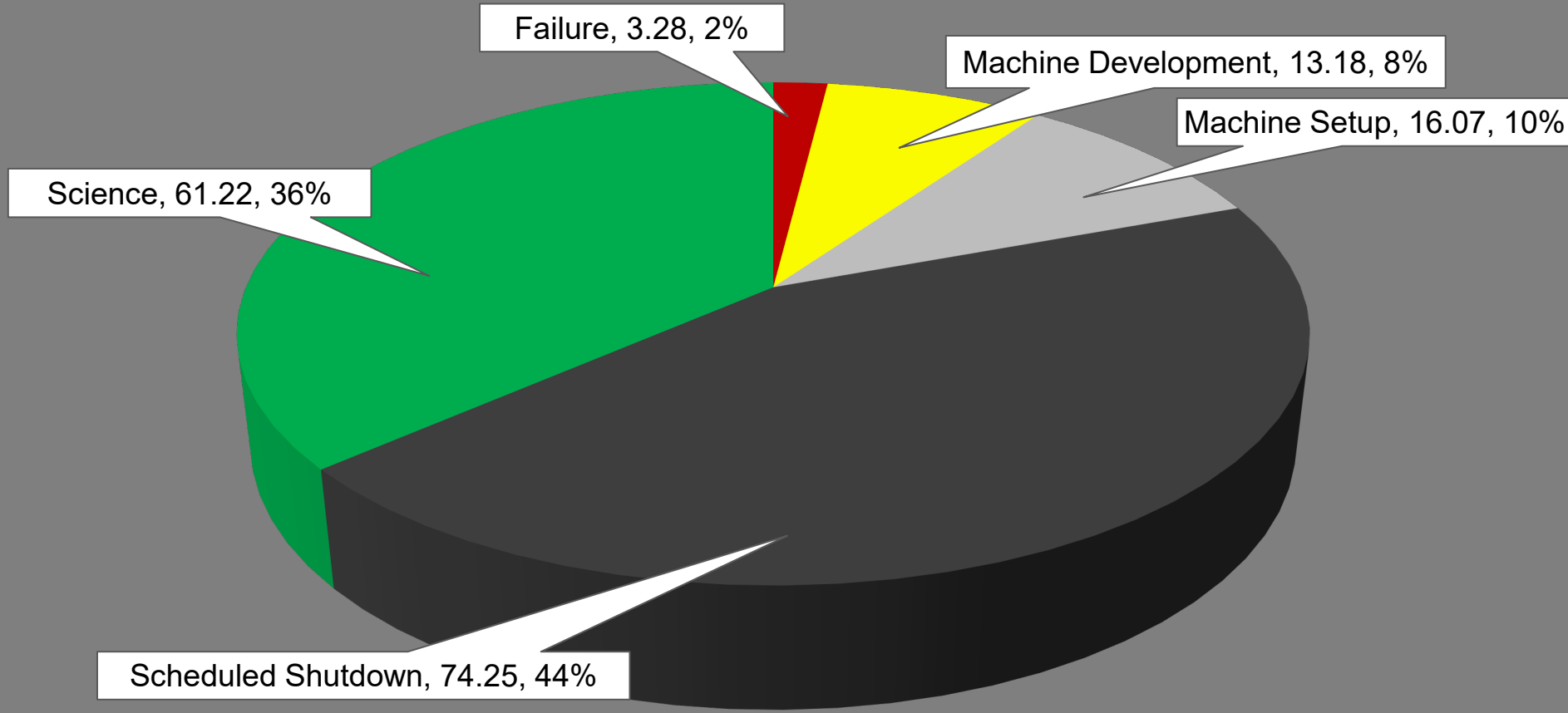
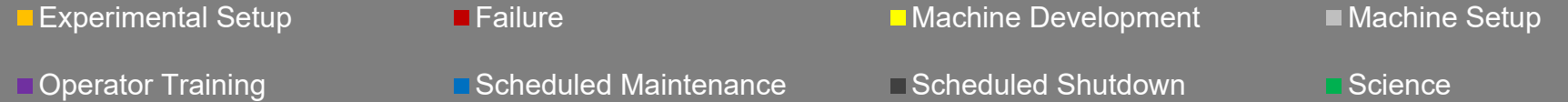
NSRL activity past week: 9/3-10/2024 (as of 0800)

NSRL continues running for multiple users.

Linac protons, 9 EBIS ions in use. Development for EBIS H took place.

Running 24-C schedule since 22 May. Schedule posted, **updates to 29 October** for beams & users until November shutdown.

NSRL Hours



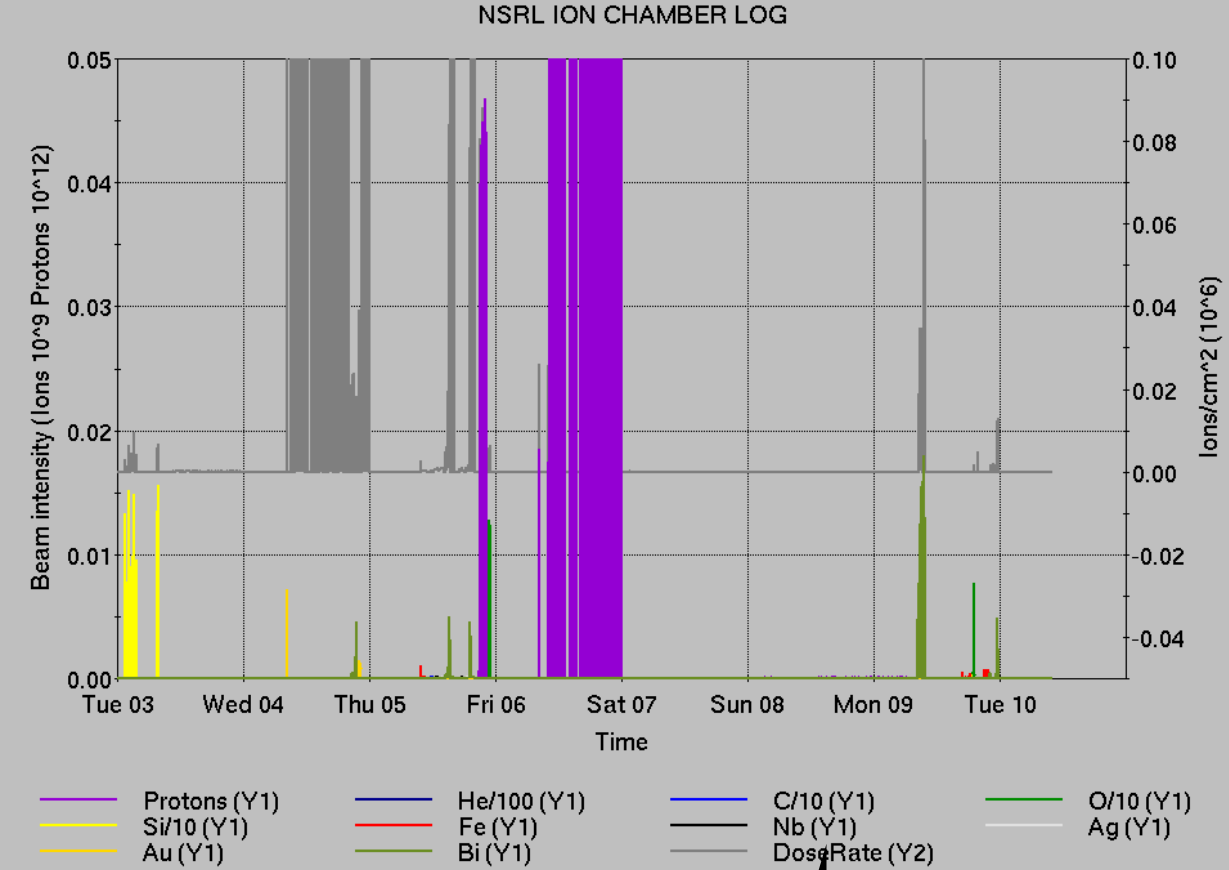
Notes from Operations

Notable failures (>1 hr)

- Sector 8 ACS failure into Safe Access; recurring failure traced to bad opto relay for local keytree
- QLI Y9 snake quench during APEX, QD FEC reset
- Blue QLI w/DX heaters, 8b-qd1 FEC failure/reset.
- Blue QLI, Main Dipole PS failure; breaker, QD FEC reset
- Blue QLI without beam, Main Quad PS regulator reset
- Accesses for STAR, sPHENIX, CeC/Vacuum work
- Y9-3 RF cavity trips, access to service chiller water

Other notes

- AGS RF sta D repaired; access for B/BC repairs
- Polarized source work, cold snake refills behind stores
- Booster b-qs3 PS trips, repaired rack ???
- Linac Mod 2 8618 tube replaced
- Beam abort, injection losses from polarimeter
- Beam abort, tuning after rebucketing
- Other misc trips, resets; over 45 additional failure hours logged that did not affect programs



AlarmDisplay - All Alarm View@ac

Setup Filter

	Linac	Tandem	EBIS	Booster	AGS	ATR	RHIC	ERL	Other	Total
Total	5 (0)	30 (163)	1 (4)	10 (19)	7 (13)	5 (2)	14 (25)	0 (0)	38 (19)	110 (245)
RF	0 (0)	0 (0)	0 (0)	1 (0)	1 (0)	0 (0)	0 (0)	0 (0)	11 (8)	13 (8)
PS	1 (0)	28 (130)	1 (4)	1 (0)	3 (6)	5 (2)	6 (5)	0 (0)	0 (1)	45 (148)
Vacuum	4 (0)	2 (31)	0 (0)	5 (18)	0 (0)	0 (0)	2 (15)	0 (0)	9 (7)	22 (71)
Inst	0 (0)	0 (2)	0 (0)	0 (0)	0 (2)	0 (0)	0 (3)	0 (0)	4 (3)	4 (10)
Other	0 (0)	0 (0)	0 (0)	3 (1)	3 (5)	0 (0)	6 (2)	0 (0)	14 (0)	26 (8)

Tue Sep 10 11:20:58 EDT 2024

want some alarm notification?
<http://messageservice.pbn.bnl.gov>
 for anything that shows up here – and anything that does not.
 YOUR resource for a need-to-know basis

Reminder from Operations

- MCR continues Operations for:
 - BLIP – continues today, through 20 September. Additional run to follow.
 - NSRL – same user scheduled to run Mon-Sat next 3 weeks.
 - EBIS proton tests in Booster continue.
 - AGS/Booster setups continue, additional to RHIC physics.
 - Injector Au setup as yet untested. Anticipated following TtB setup 16-20 September.
 - Skew quad setup running in AGS; other polarized beam setups continue as beam time allows.
 - RHIC beam for Physics stores.
 - Other MD, Maintenance, APEX as noted in schedule.
- CHECK YOUR CALLIN LIST: WCC and ECP updates needed
 - Initial failure response often involves ECP consult. Ensure your Group callin list contains this information.
 - Callin lists should be accurate in terms of personnel and time off.
 - https://www.cadops.bnl.gov/Operations/personnel/call_in_lists/
 - Note: Core Electrical contacts listed/managed on ESSHQ callin list
https://www.cadops.bnl.gov/Operations/personnel/call_in_lists/call_in_list.php?group=esshq
- CHECK AND EDIT YOUR OWN CONTACT INFO
 - <http://directory.pbn.bnl.gov/>

Availability: RHIC Run-24

