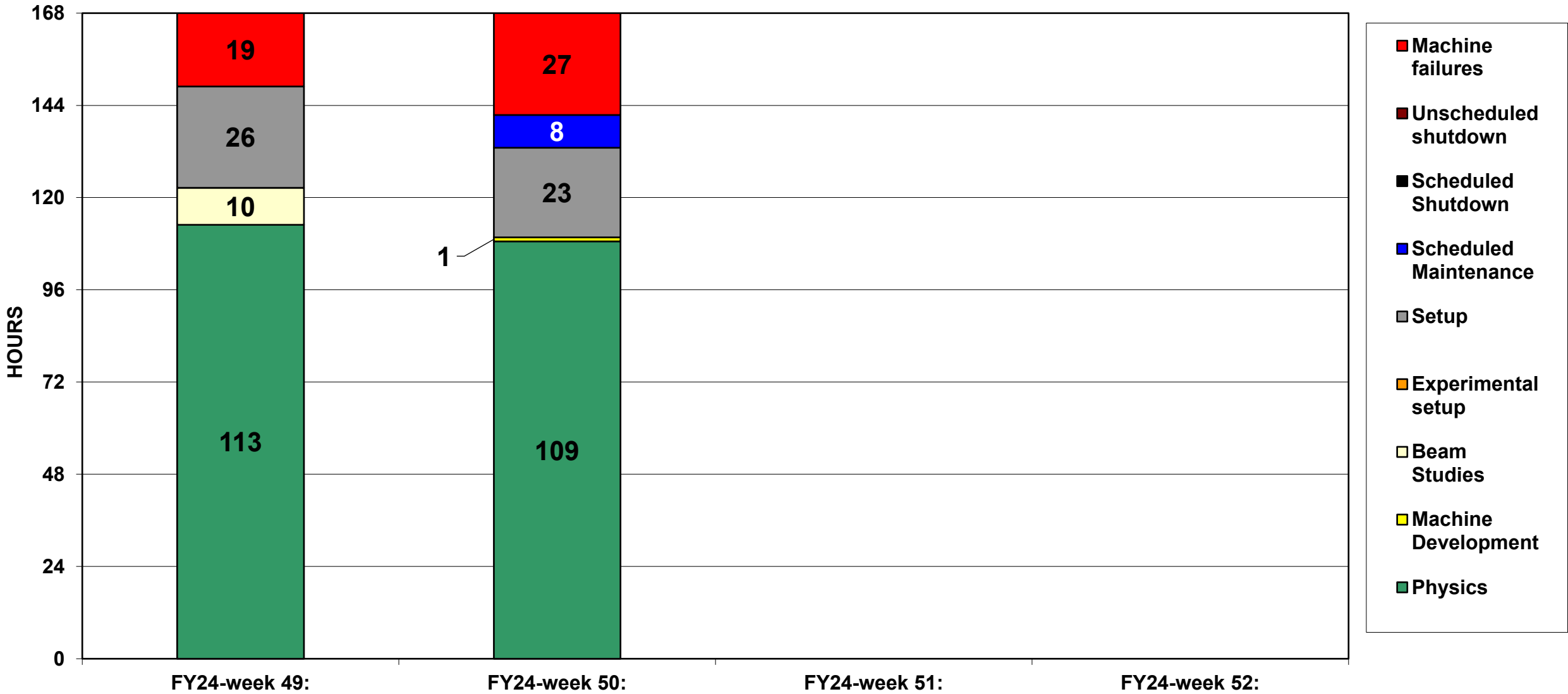
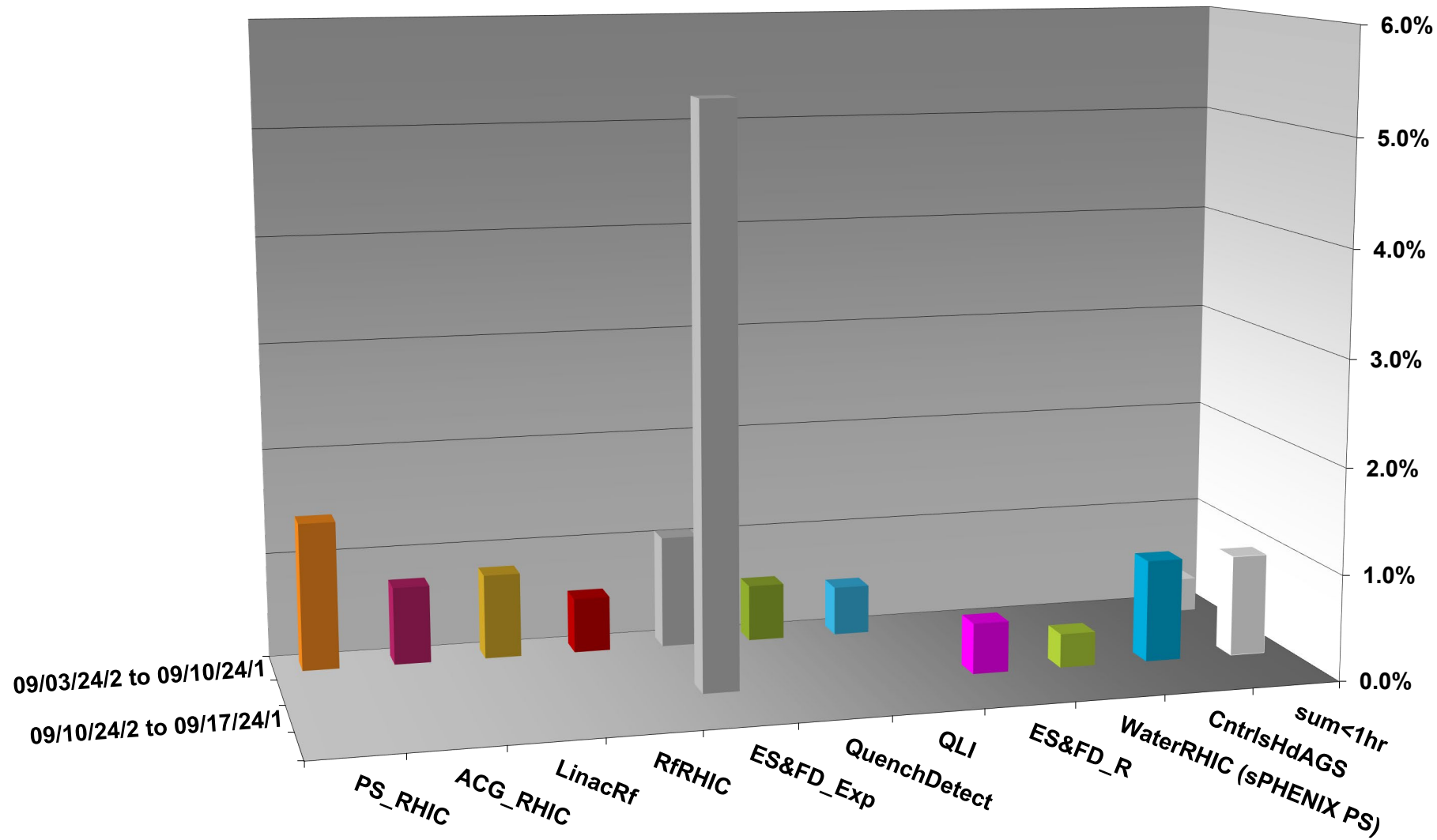


C-AD ACTIVITY SEPTEMBER 2024



INTEGRATED FAILURES (GREATER THAN ONE HOUR) BY SYSTEM - SEPTEMBER 2024



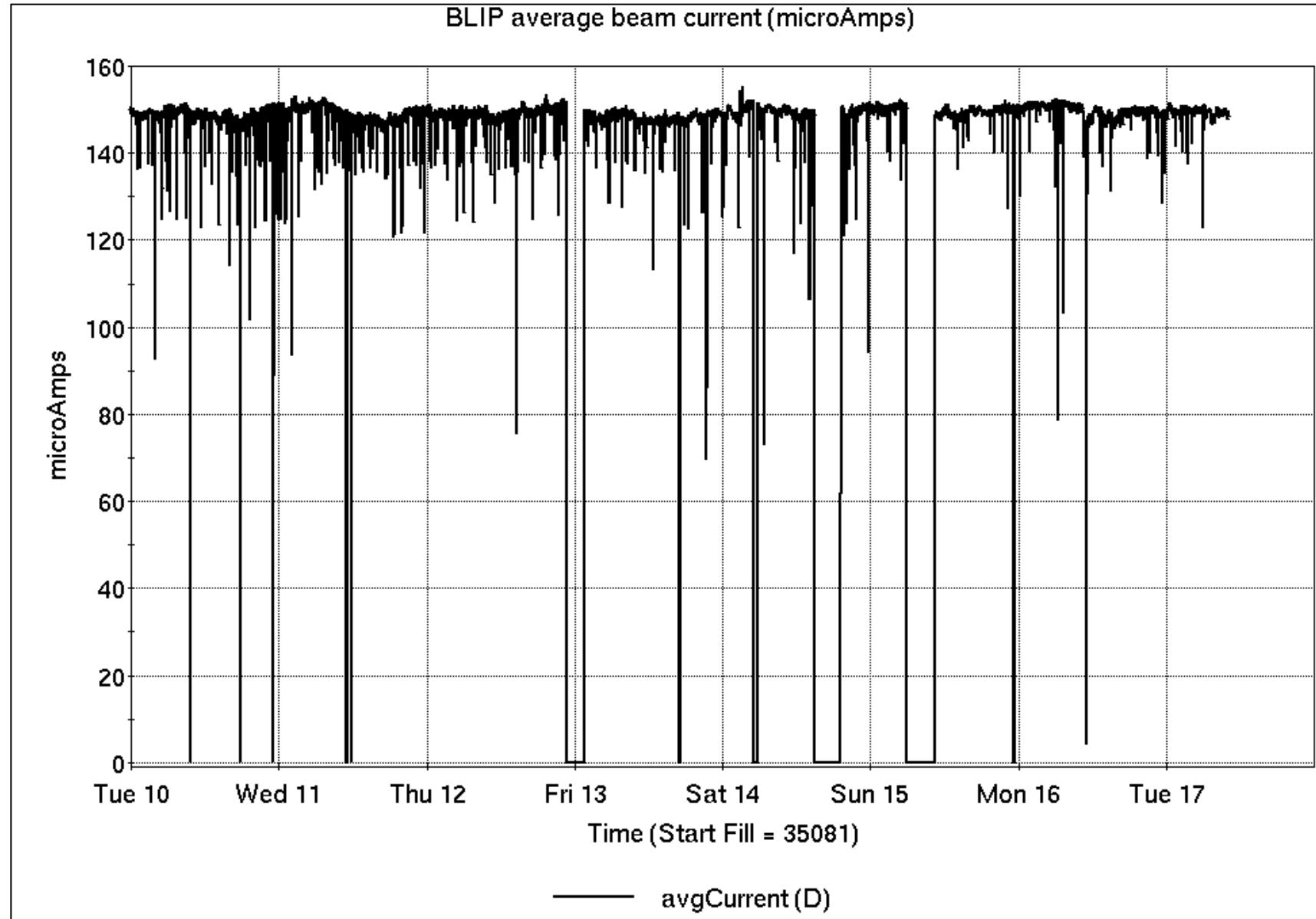
Operations for BLIP

9/10-17/2024:

200 MeV Th target run,
ongoing all week.

- 155.37 hr Production
- 12.63 hr failures

Availability: 92.5%



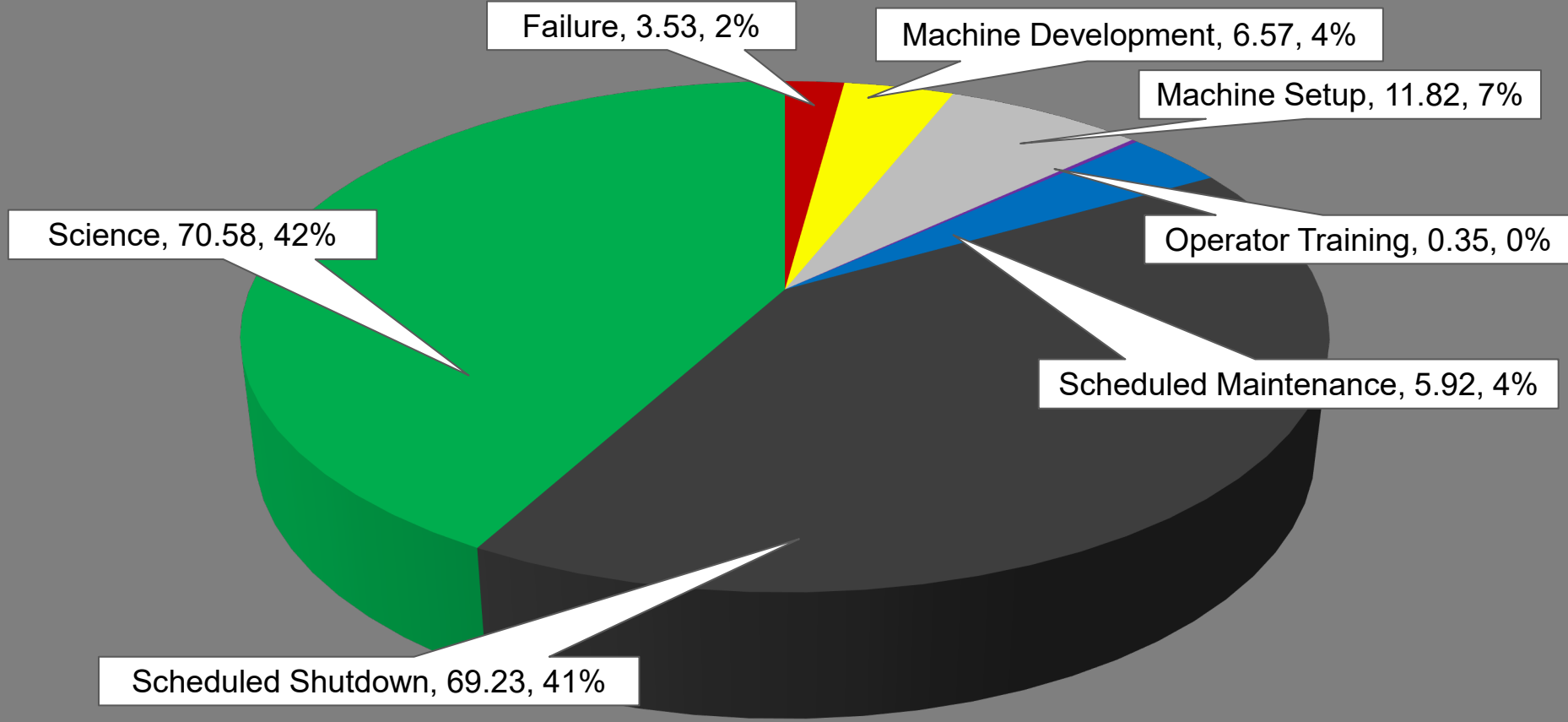
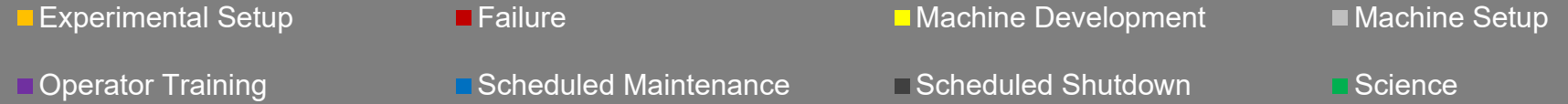
NSRL activity past week: 9/10-17/2024 (as of 0800)

NSRL continues running for multiple 'TMRC' users.

Linac protons, 9 EBIS ions in use. Development for EBIS H took place.

Running 24-C schedule since 22 May. Schedule posted, updates to 29 October for beams & users until November shutdown.

NSRL Hours



Availability: **96.2%**

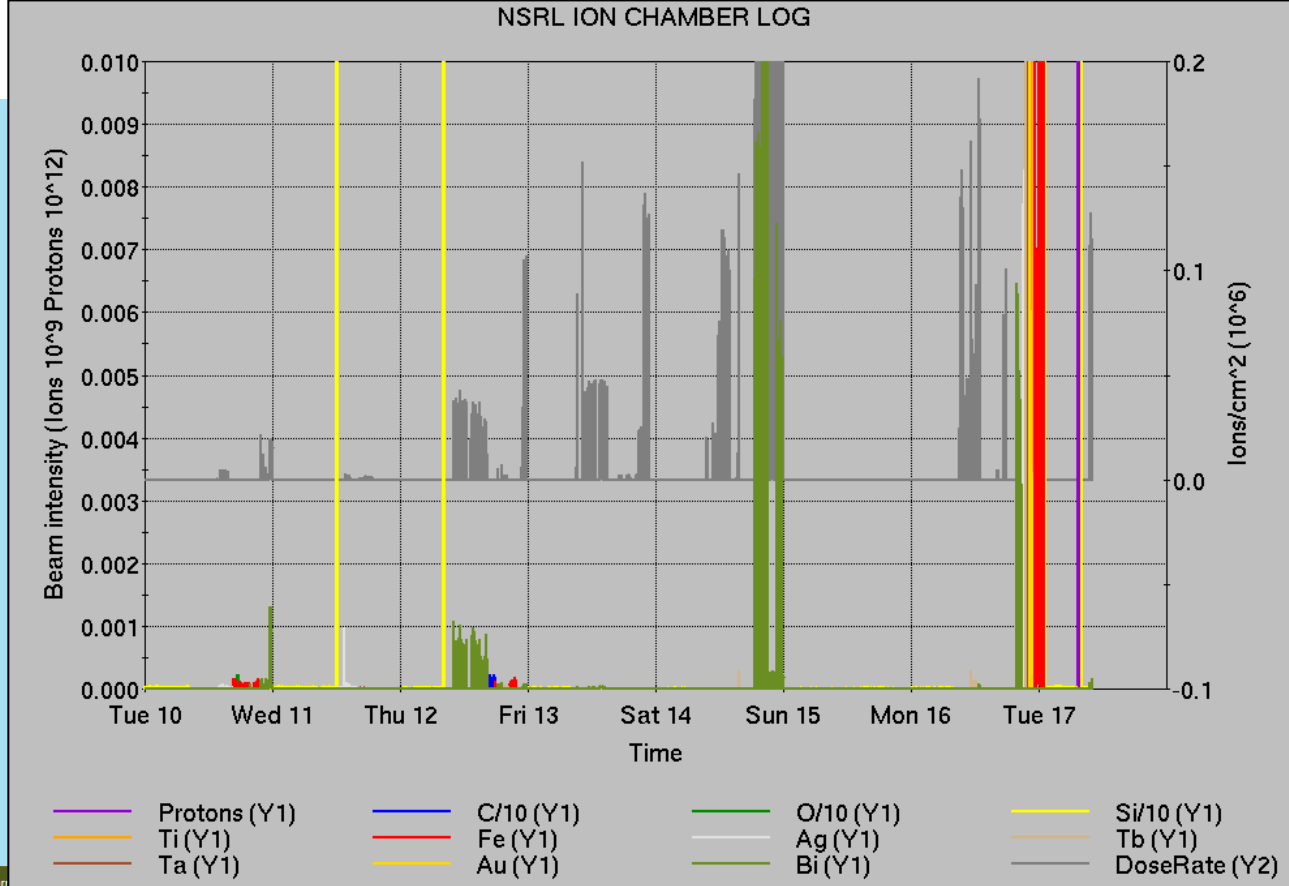
Notes from Operations

Notable failures (>1 hr)

- AGS extraction Controls failure, cfe-h10-corr1 processor replaced
- Multiple experiment access for detector failure (MVTX cooling)
- sPHENIX magnet trip, water flow switches flushed
- HEBT vacuum failure, access for leak repairs.
- Access for H-jet failures
- Linac RFQ failure, screen modulator replaced
- Linac Mod 7 failure, 50kV PS repairs

Other notes

- BLM aborts, yellow TQ PS trips
- BtA vacuum failure, pumps reset
- Access for YS1 FB amp repairs
- Access for LEReC vacuum leak
- Access for yi6-octd-ps replacement
- Polarimeter target issues delayed fill
- EBIS RFQ trip
- AGS RF station IJ failure, awaiting access
- Various other trips, resets. Over 181 hours in total for mild or concurrent failures along with severe failures interrupting the programs.



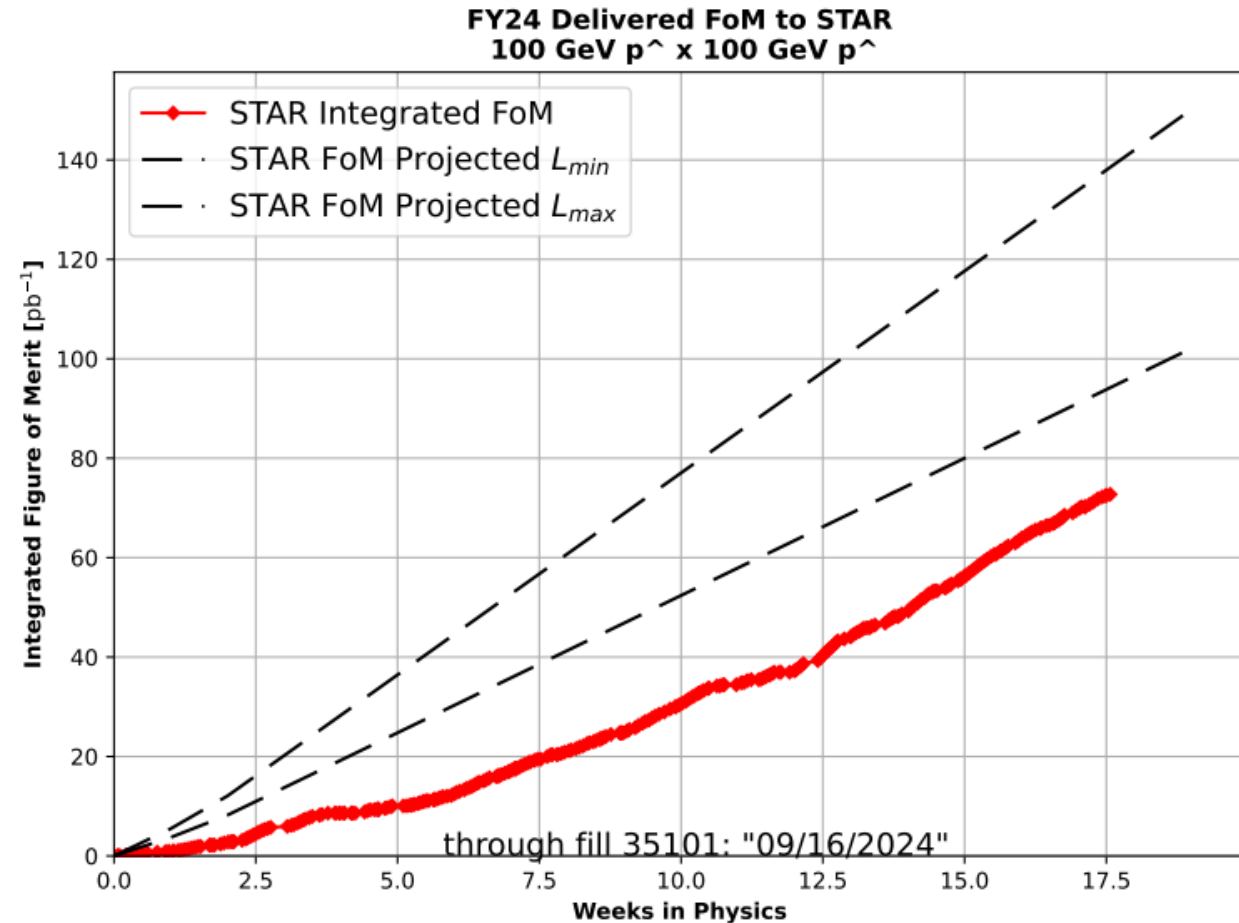
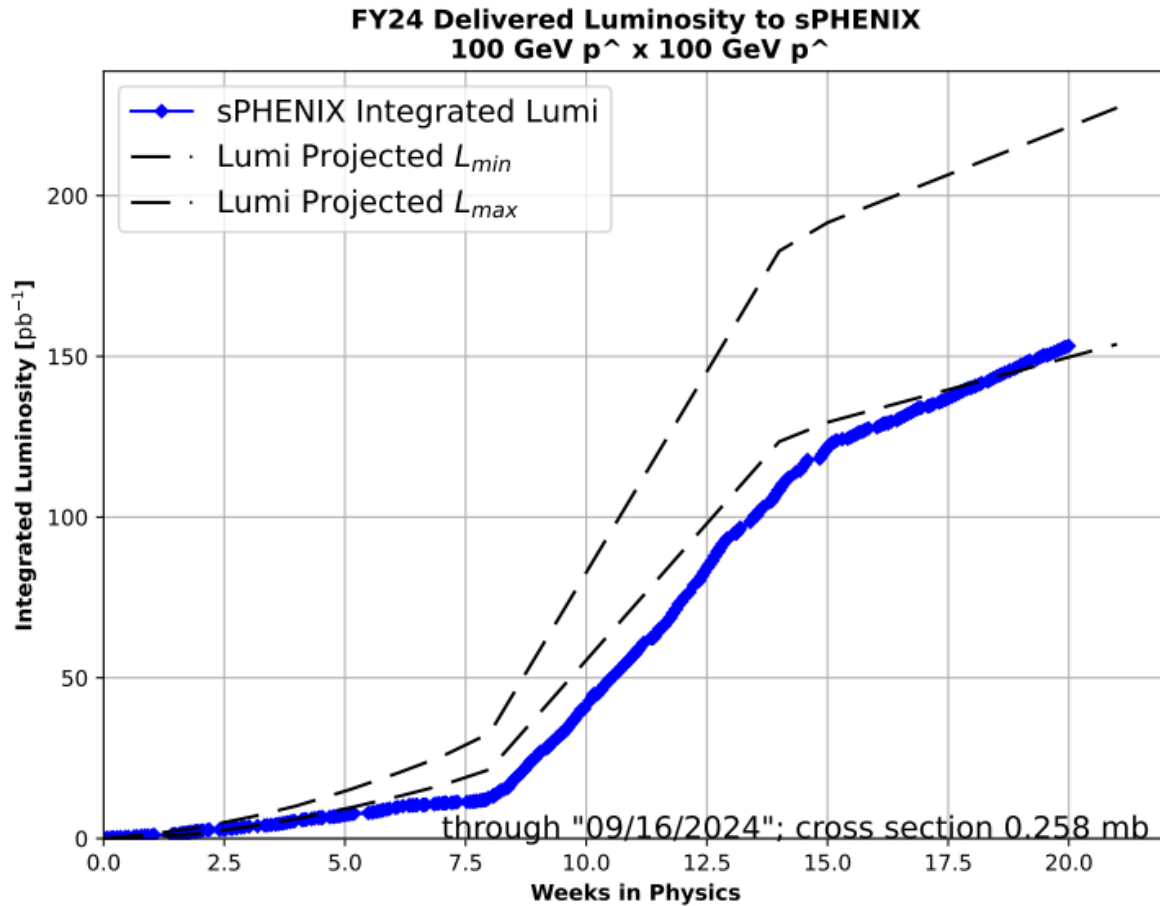
Setup	Filter	Linac	Tandem	EBIS	Booster	AGS	ATR	RHIC	ERL	Other	Total
Total		0 (0)	27 (40)	4 (4)	10 (9)	10 (9)	2 (0)	18 (14)	0 (0)	17 (17)	88 (93)
RF		0 (0)	0 (0)	0 (0)	0 (0)	2 (0)	0 (0)	0 (0)	0 (0)	7 (8)	9 (8)
PS		0 (0)	26 (7)	1 (4)	1 (0)	5 (2)	2 (0)	4 (3)	0 (0)	0 (1)	39 (17)
Vacuum		0 (0)	1 (31)	3 (0)	3 (8)	1 (0)	0 (0)	6 (6)	0 (0)	3 (5)	17 (50)
Inst		0 (0)	0 (2)	0 (0)	0 (0)	2 (2)	0 (0)	3 (3)	0 (0)	5 (3)	10 (10)
Other		0 (0)	0 (0)	0 (0)	6 (1)	0 (5)	0 (0)	5 (2)	0 (0)	2 (0)	13 (8)

want some alarm notification?
<http://messageservice.pbn.bnl.gov>
 for anything that shows up here – and anything that does not. YOUR resource for a need-to-know basis

Reminder from Operations

- MCR continues Operations for:
 - BLIP – continues today, **now ending 19 September**. Additional runs to follow until 30 September.
 - NSRL – same user scheduled to run Mon-Sat next 3 weeks.
 - **EBIS proton tests in Booster continue**.
 - AGS/Booster setups continue, additional to RHIC physics.
 - Injector **Au setup as yet untested**. Anticipated following TtB setup later this week.
 - **Skew quad setup running in AGS**; **other polarized beam setups continue** as beam time allows.
 - RHIC beam for Physics stores.
 - Other MD, Maintenance, APEX as noted in schedule.
- CHECK YOUR CALLIN LIST: **WCC** and **ECP** updates needed
 - **Initial failure response often involves ECP consult. Ensure your Group callin list contains this information.**
 - **Callin lists should be accurate in terms of personnel and time off.**
 - https://www.cadops.bnl.gov/Operations/personnel/call_in_lists/
 - Note: **Core Electrical contacts listed/managed on ESSHQ callin list**
https://www.cadops.bnl.gov/Operations/personnel/call_in_lists/call_in_list.php?group=esshq
- CHECK AND EDIT YOUR OWN CONTACT INFO
 - <http://directory.pbn.bnl.gov/>

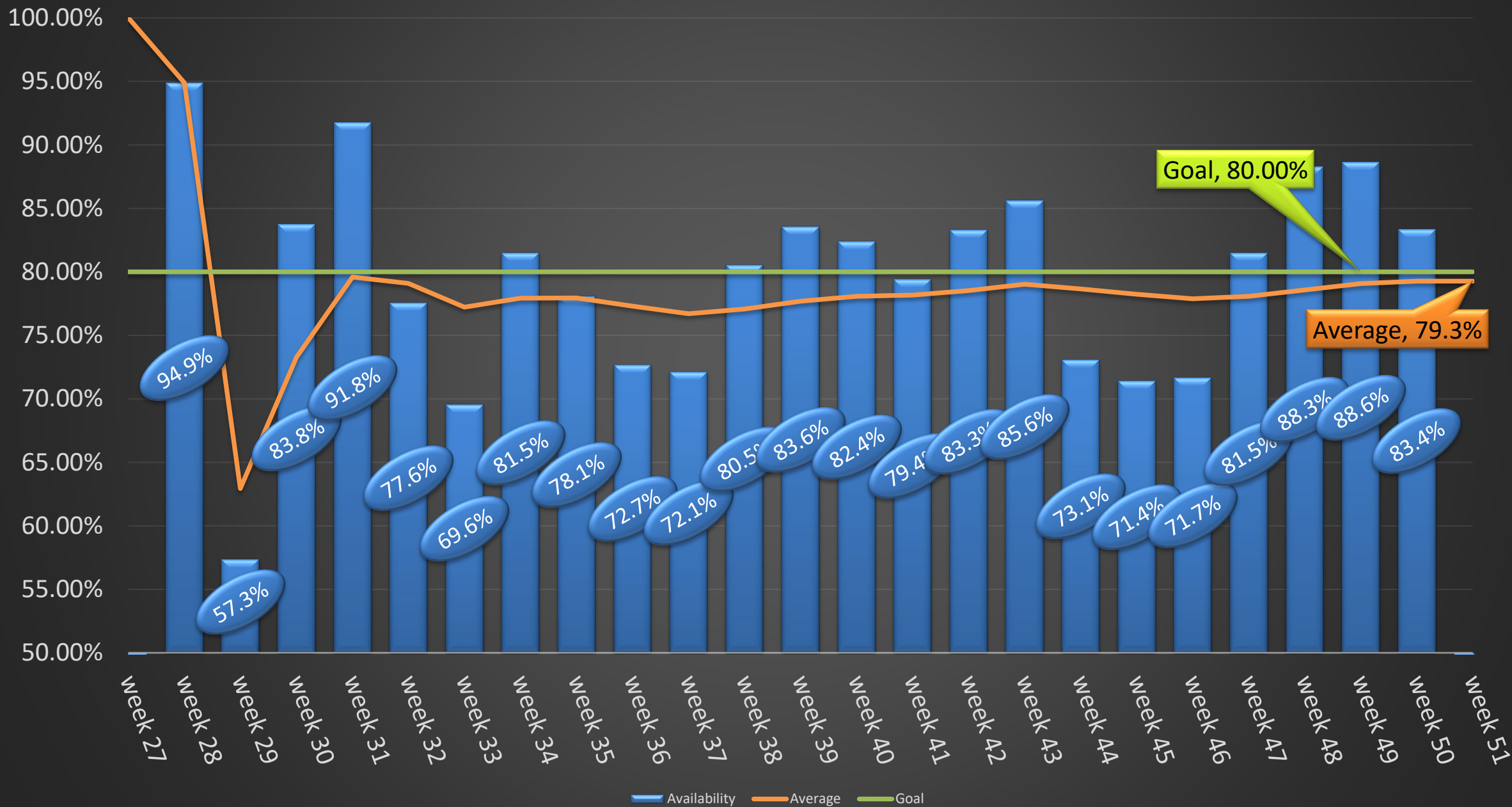
Preliminary delivered Luminosity, Figure of Merit (LP²) data for RHIC



Courtesy R. Terheide

Note: singles corrections applied to integrated lumi plot; updated projection includes crossing angle considerations

Availability: RHIC Run-24



Mean Time Between Failure, Mean Time To Repair, Average Failure Hours per Day (cryo start to cryo end date)

