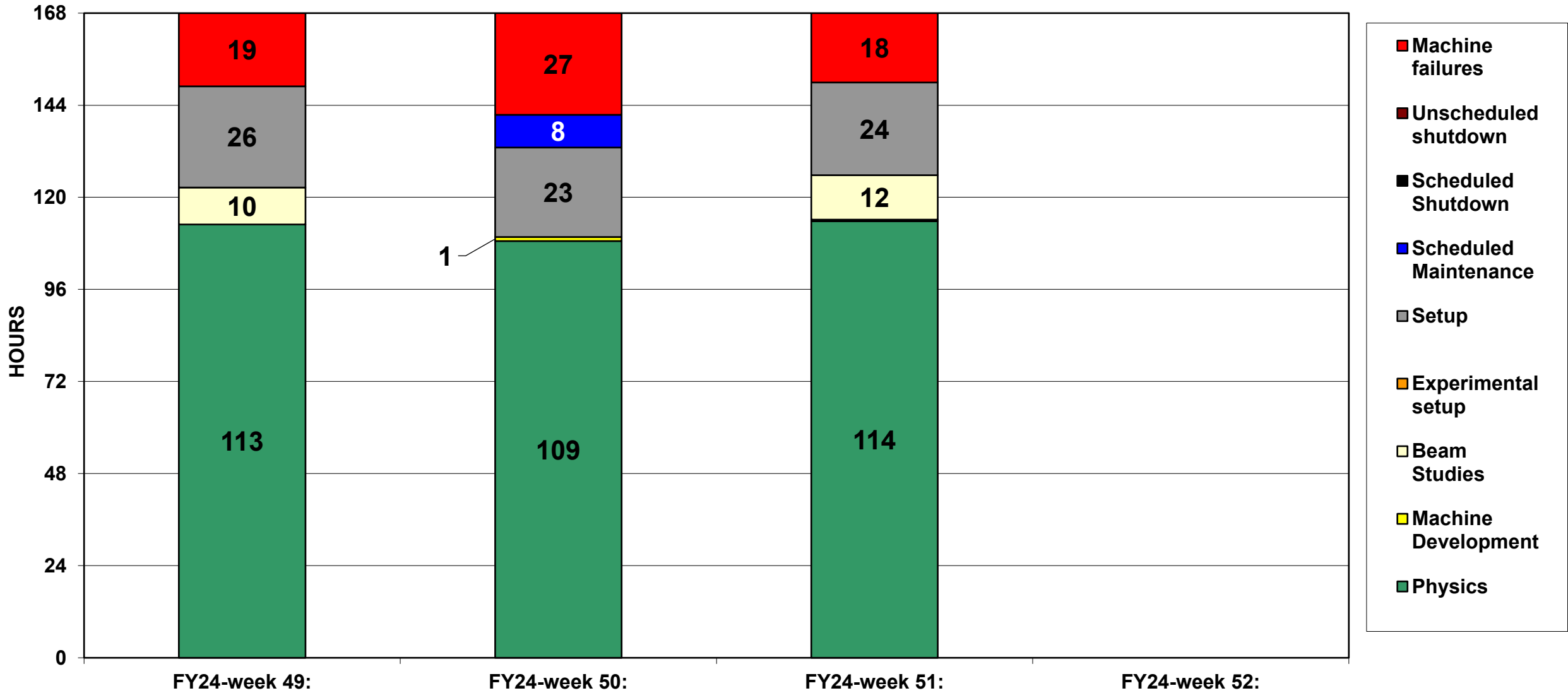
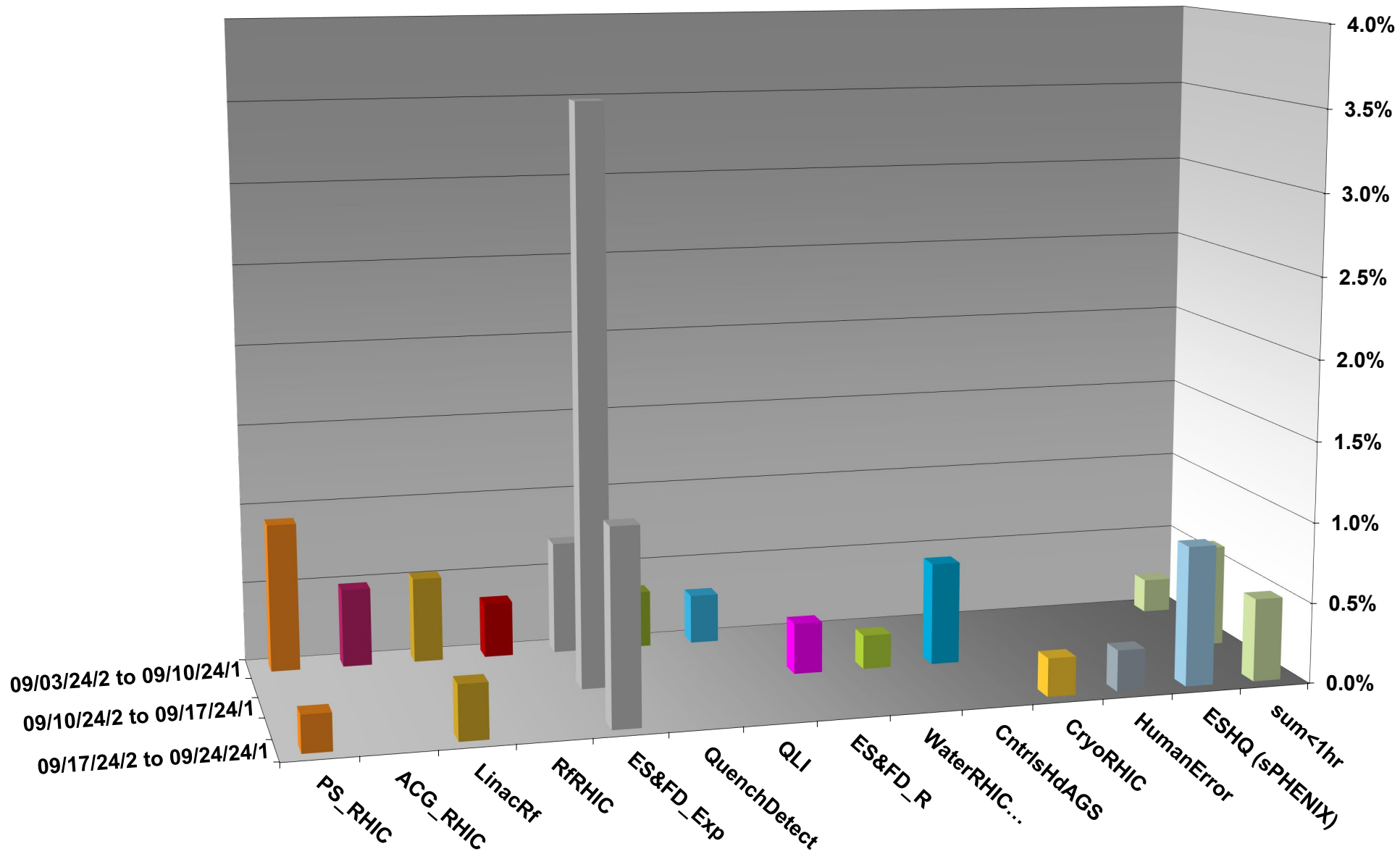


C-AD ACTIVITY SEPTEMBER 2024



INTEGRATED FAILURES (GREATER THAN ONE HOUR) BY SYSTEM - SEPTEMBER 2024



Operations for BLIP

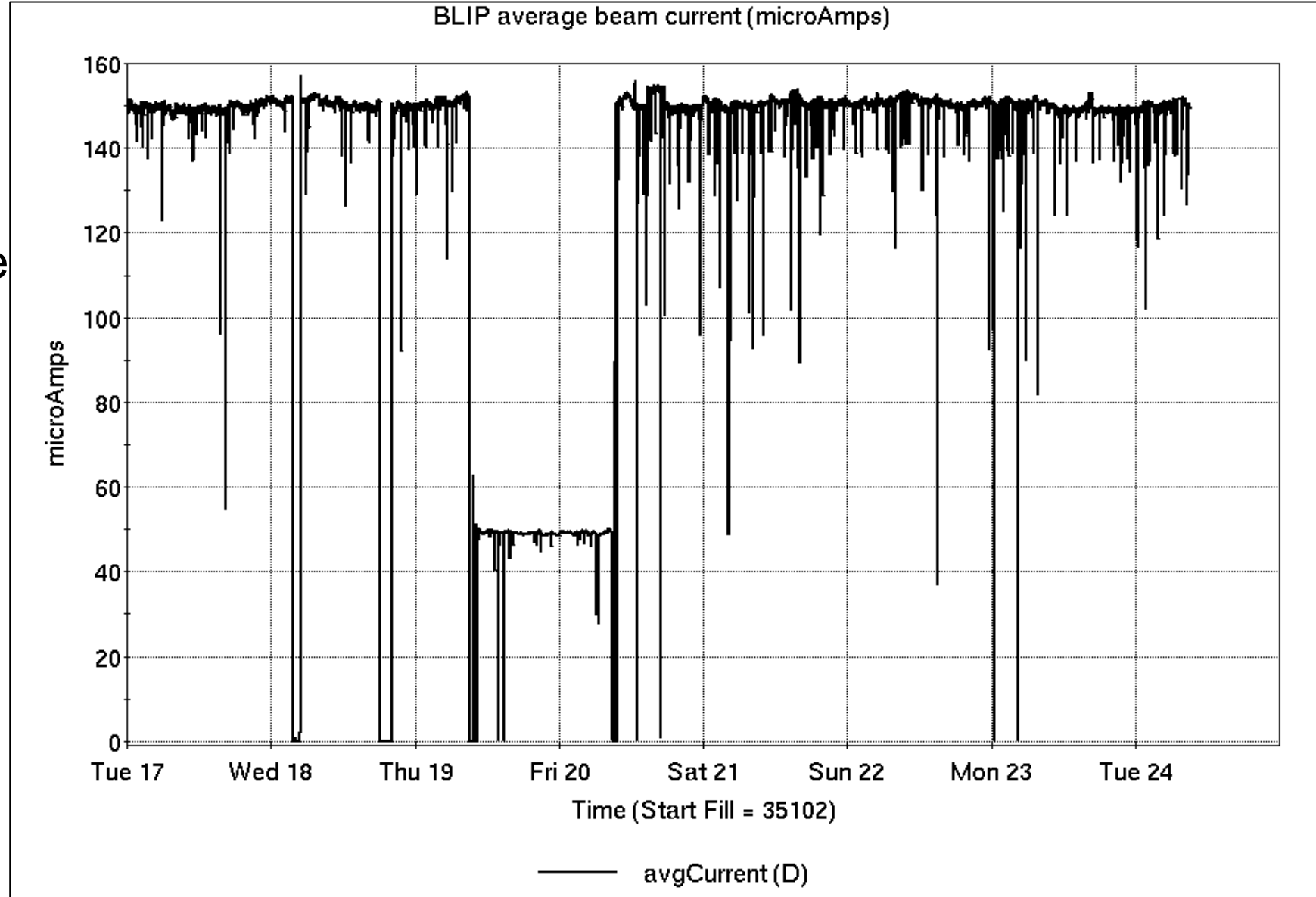
9/17-24/2024:

200 MeV Th target run concluded, followed by a short 117 MeV run before beginning another 200 MeV run.

ongoing all week.

- 162.17 hr Production
- 2.25 hr Setup
- 3.58 hr failures

Availability: **97.9%**



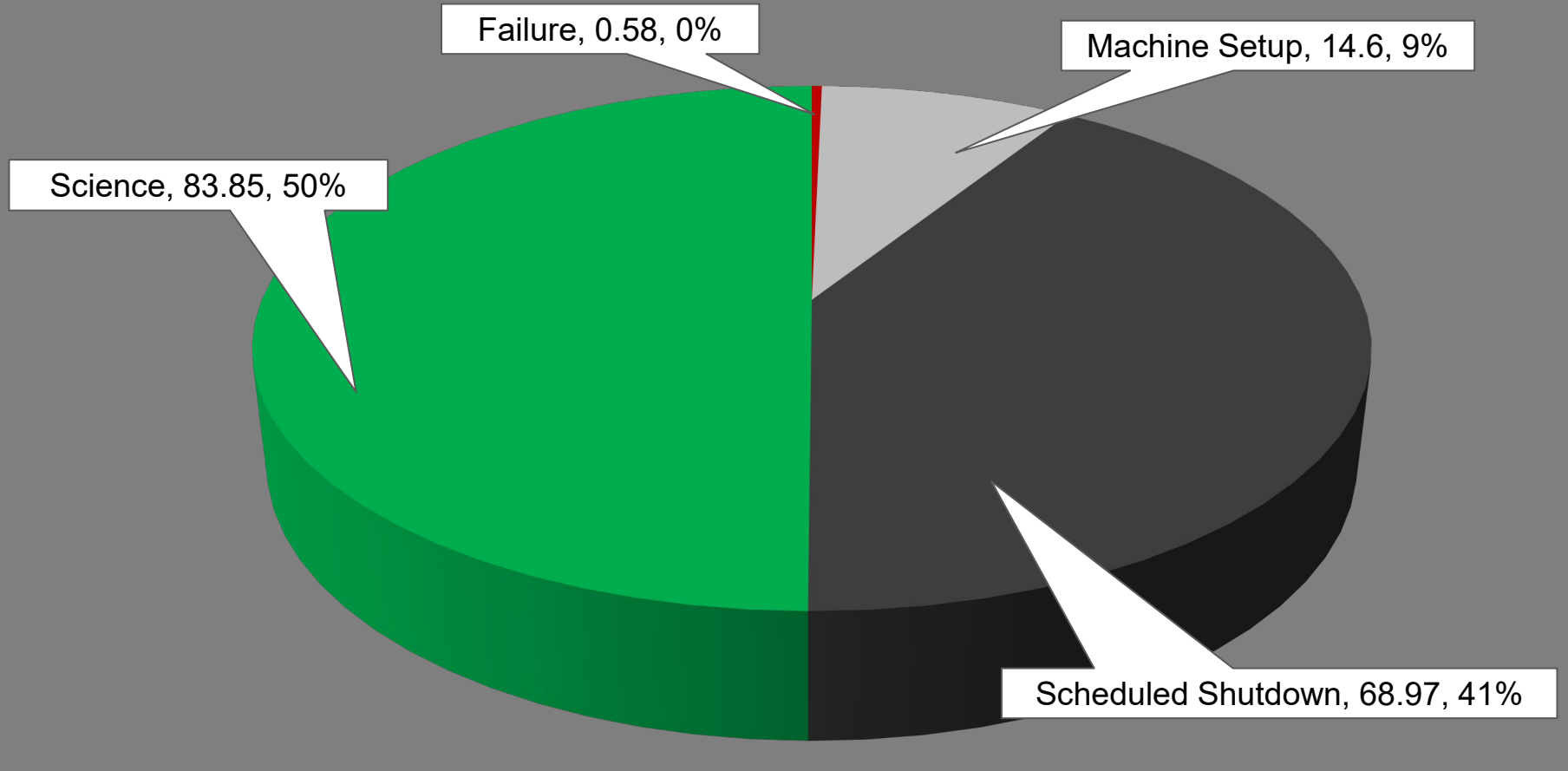
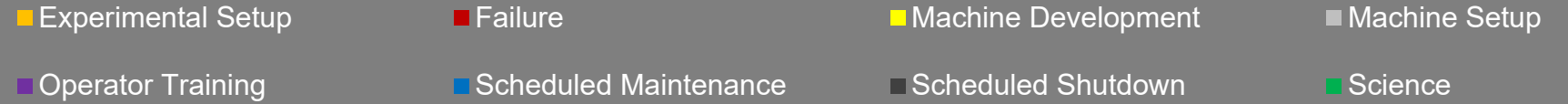
NSRL activity past week: 9/17-24/2024 (as of 0800)

NSRL continues running for multiple 'TMRC' users.

Linac protons, 8 EBIS ions in use.
Development for EBIS H took place.

Running 24-C schedule since 22 May. Schedule posted, updates to 1 November for beams & users until November shutdown. Run 25-A TBD.

NSRL Hours



Availability: 99.4%

Notes from Operations

Notable failures (>1 hr)

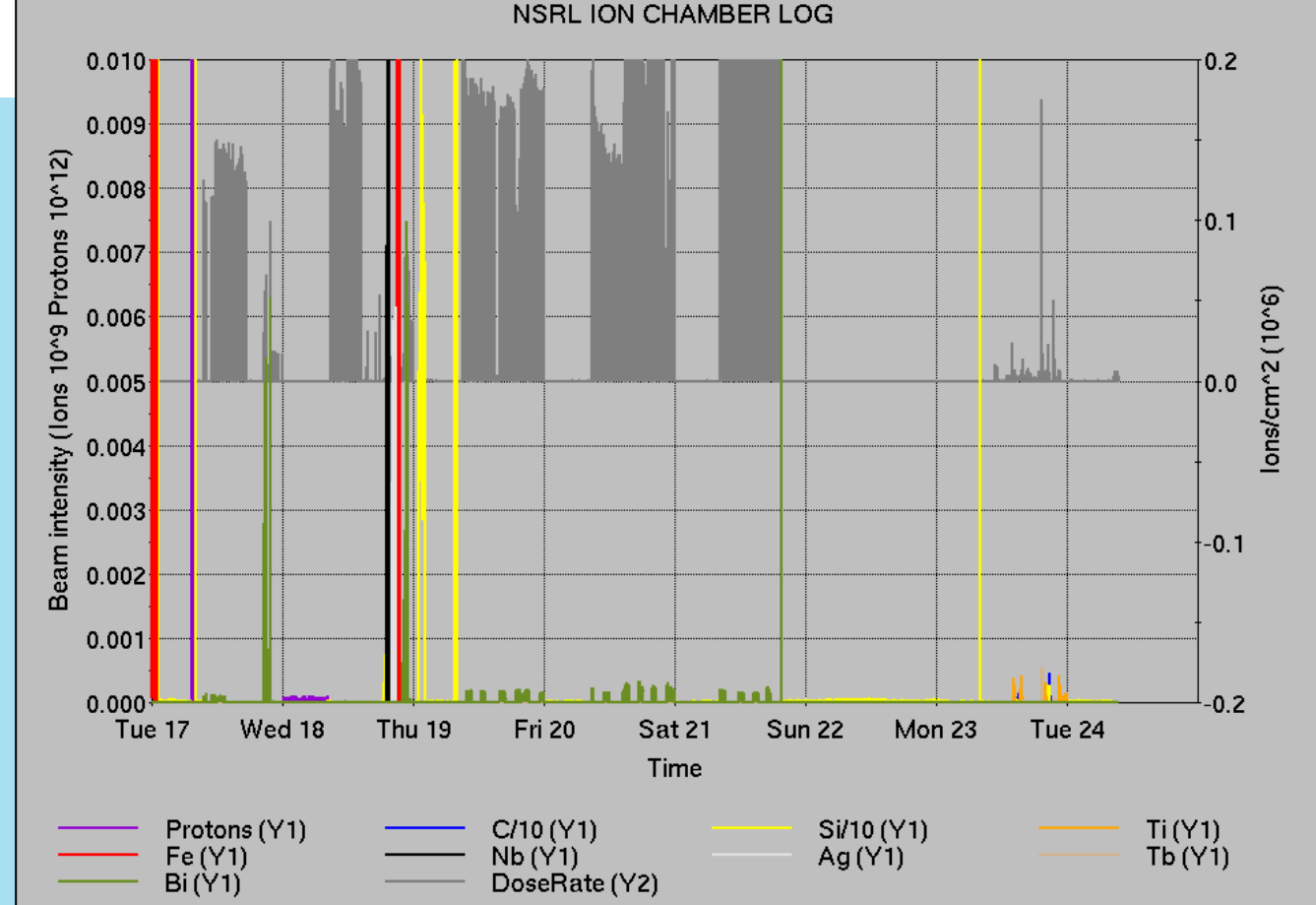
- Multiple experiment access for detector failure (MVTX cooling, SEPD)
- Cryo lead flow trip, regulator card replaced during experiment access
- Access during APEX delayed for dump RCT survey
- Emergency response for report of sPHENIX rack smoke detector
- Blue QLI, undiagnosed trip of Main Dipole
- Linac buncher trip, 5kW amp adjusted
- Linac Mod 4 failure, 8618 tube replaced

Other notes

- AGS RF station IJ repaired behind stores
- AGS CN1 polarimeter timing issues
- Booster access for skew quad repair
- TtB section 28 vacuum valve faults
- AGS H20 skew quad PS failure, fuse replaced
- BLM abort, yellow tune feedback lost lock
- Booster access for MW006 repair (2x); other BtA MW issues ongoing
- Yellow injection kicker PS failure, filament fuse replaced
- BLM abort, Operator error with AtR beam setup
- Cold snake LHe refill
- Various other trips, resets.

Over 144 failure hours logged in total (mild, concurrent, severe) across all programs.

84 hours logged for CeC work with electron beam



	Linac	Tandem	EBIS	Booster	AGS	ATR	RHIC	ERL	Other	Total
Total	2 (0)	4 (36)	2 (4)	9 (6)	5 (10)	1 (0)	9 (15)	0 (0)	18 (17)	50 (88)
RF	0 (0)	0 (0)	0 (0)	0 (0)	1 (0)	0 (0)	0 (0)	0 (0)	8 (8)	9 (8)
PS	0 (0)	2 (6)	1 (4)	1 (0)	1 (3)	1 (0)	4 (3)	0 (0)	0 (1)	10 (17)
Vacuum	2 (0)	2 (30)	1 (0)	5 (5)	0 (0)	0 (0)	4 (7)	0 (0)	2 (5)	16 (47)
Inst	0 (0)	0 (0)	0 (0)	0 (0)	1 (2)	0 (0)	0 (3)	0 (0)	4 (3)	5 (8)
Other	0 (0)	0 (0)	0 (0)	3 (1)	2 (5)	0 (0)	1 (2)	0 (0)	4 (0)	10 (8)

Good news: only 50 active alarms

Bad news: 50 junk alarms we cannot get rid of (and 88 deferred alarms we cannot, either)

Reminder from Operations

- MCR continues Operations for:
 - BLIP – continues today, until 30 September **end of Linac operation**.
 - NSRL – users scheduled to run 6 days this week; 5 days next week including setup for NASA.
 - **EBIS 2 MeV protons insufficient for Booster operation. Tandem H untested; availability limited by RHIC program.**
 - AGS/Booster setups continue, additional to RHIC physics.
 - Injector **Au setup pending in AGS**.
 - **Skew quad setup running in AGS; other polarized beam setups continue** as beam time allows.
 - RHIC beam for Physics stores until Monday 0800.
 - Switch to Au setup; beam in RHIC pending other work.
- CHECK YOUR CALLIN LIST: **WCC** and **ECP** updates needed
 - **Initial failure response often involves ECP consult. Ensure your Group callin list contains this information.**
 - **Callin lists should be accurate in terms of personnel and time off.**
 - https://www.cadops.bnl.gov/Operations/personnel/call_in_lists/
 - Note: **Core Electrical contacts listed/managed on ESSHQ callin list**
https://www.cadops.bnl.gov/Operations/personnel/call_in_lists/call_in_list.php?group=esshq
- CHECK AND EDIT YOUR OWN CONTACT INFO
 - <http://directory.pbn.bnl.gov/>

Availability: RHIC Run-24

