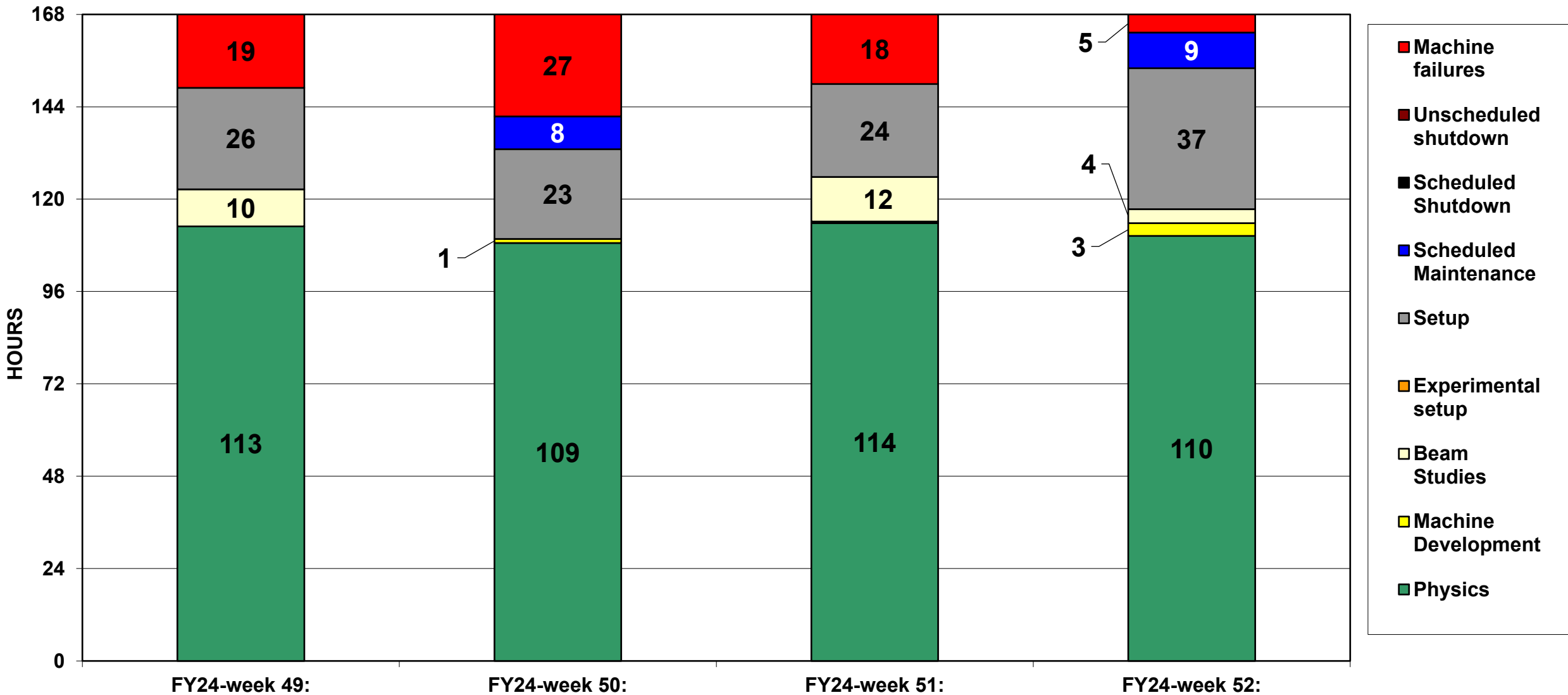
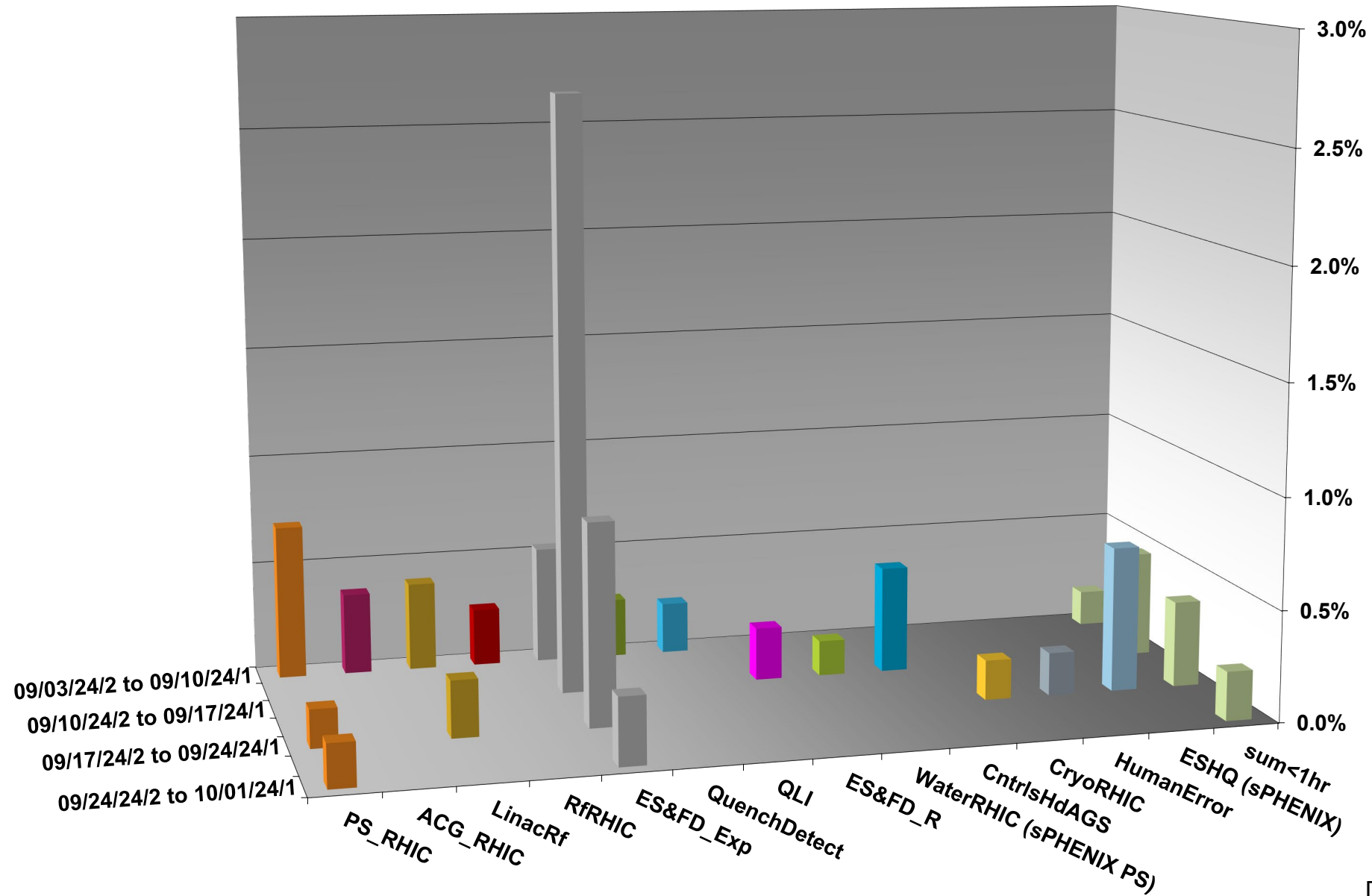


C-AD ACTIVITY SEPTEMBER 2024



INTEGRATED FAILURES (GREATER THAN ONE HOUR) BY SYSTEM - SEPTEMBER 2024



Data courtesy C. Naylor

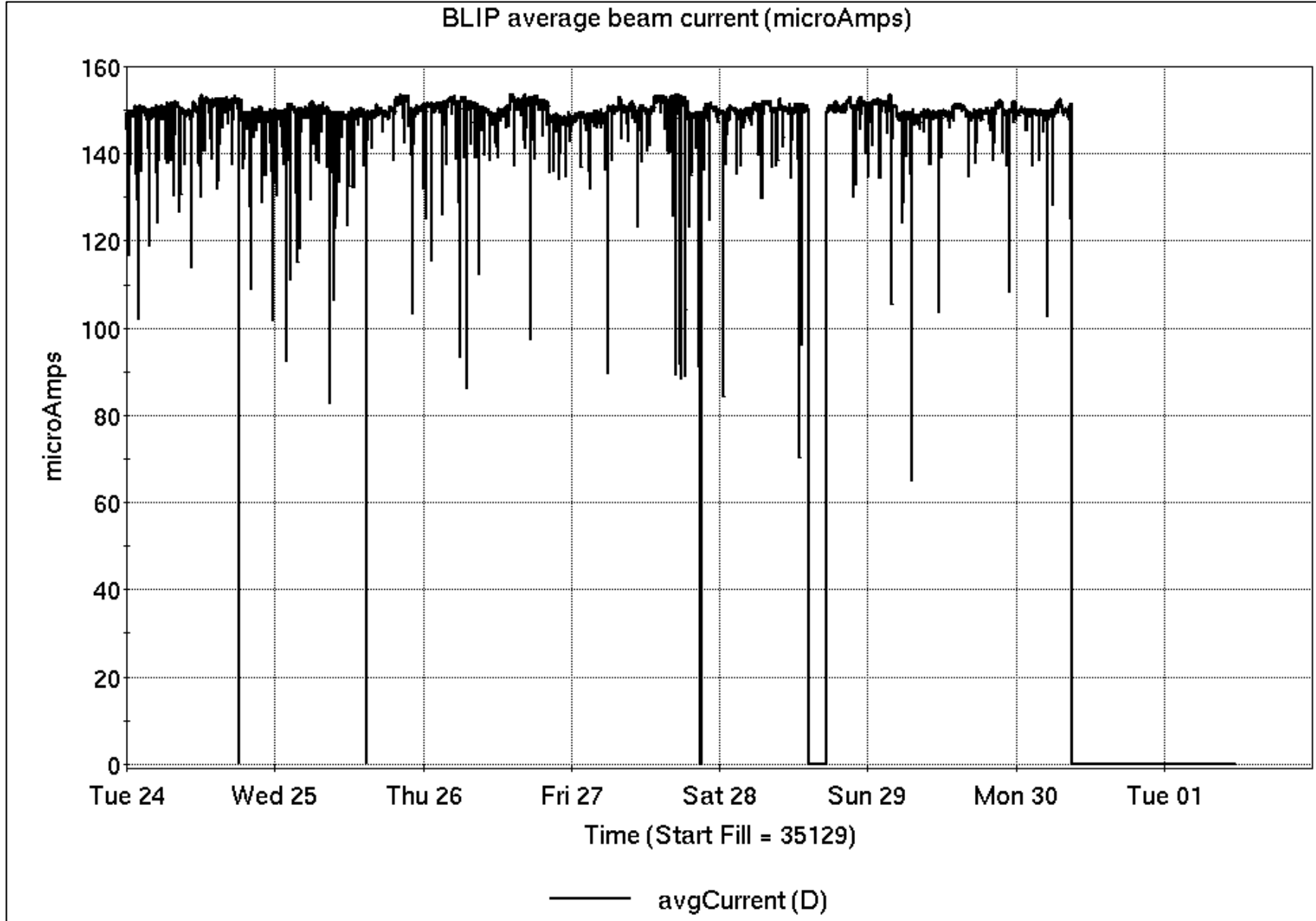
Operations for BLIP

9/24-10/01/2024:

200 MeV Th target run concluded Monday; BLIP program now in Shutdown.

- 141.75 hr Production
- 3.25 hr failures

Availability: 97.8%



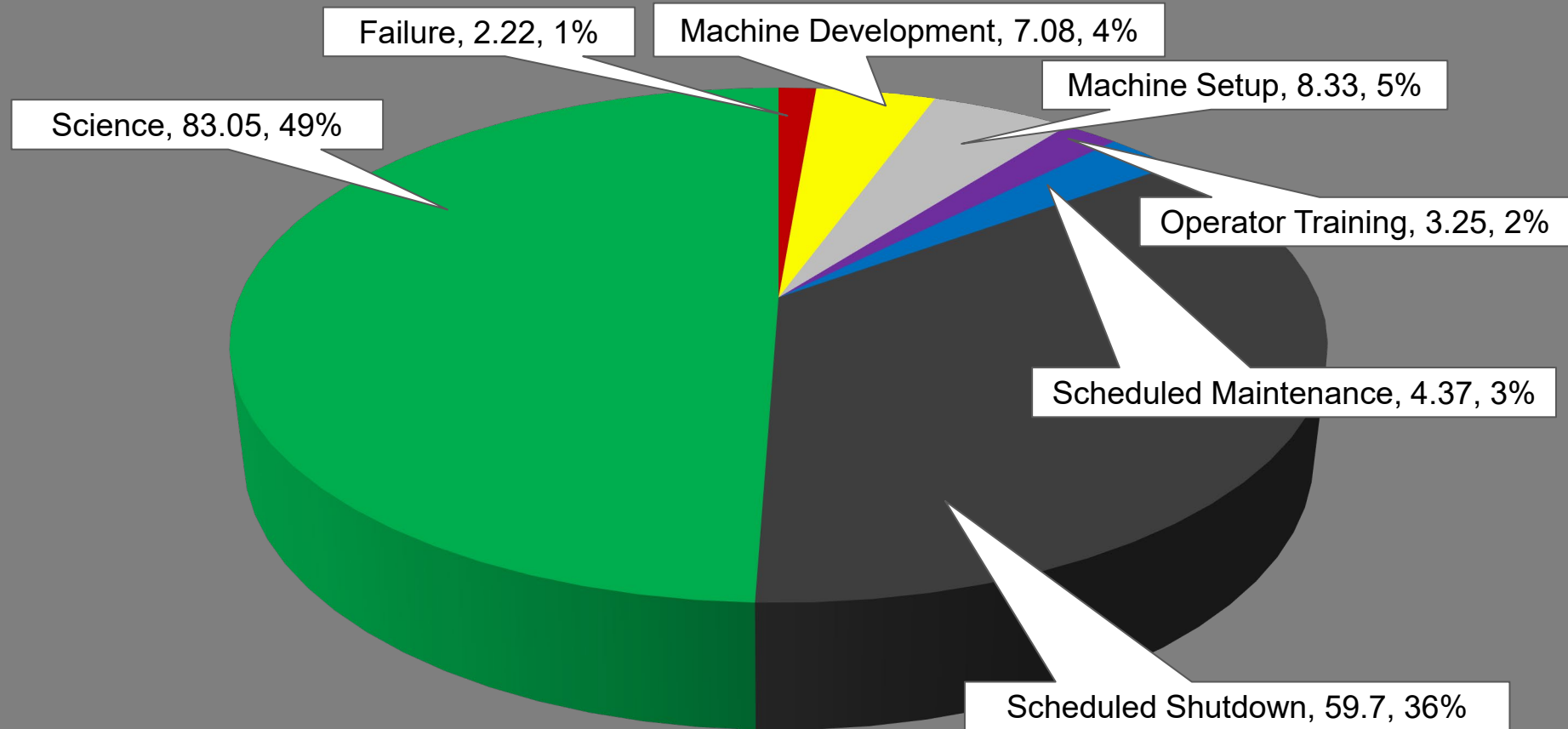
NSRL activity past week: 9/24-10/1/2024 (as of 0800)

NSRL continues running for multiple 'TMRC' users.

Linac protons, 10 EBIS ions in use. Development for EBIS H took place.

Running 24-C schedule since 22 May. Schedule posted, updates to 1 November for beams & users until November shutdown. Run 25-A TBD.

NSRL Hours



Availability: 97.9%

Notes from Operations

Notable failures (>1 hr)

- Blue QLI at injection, bo6-qf2-ps buffer card replaced
- Experiment access, store dumped early for detector failure
- EBIS trip due to power interruption during work on eba-q1-ps
- Linac Mod 4 failure, cathode PS reset

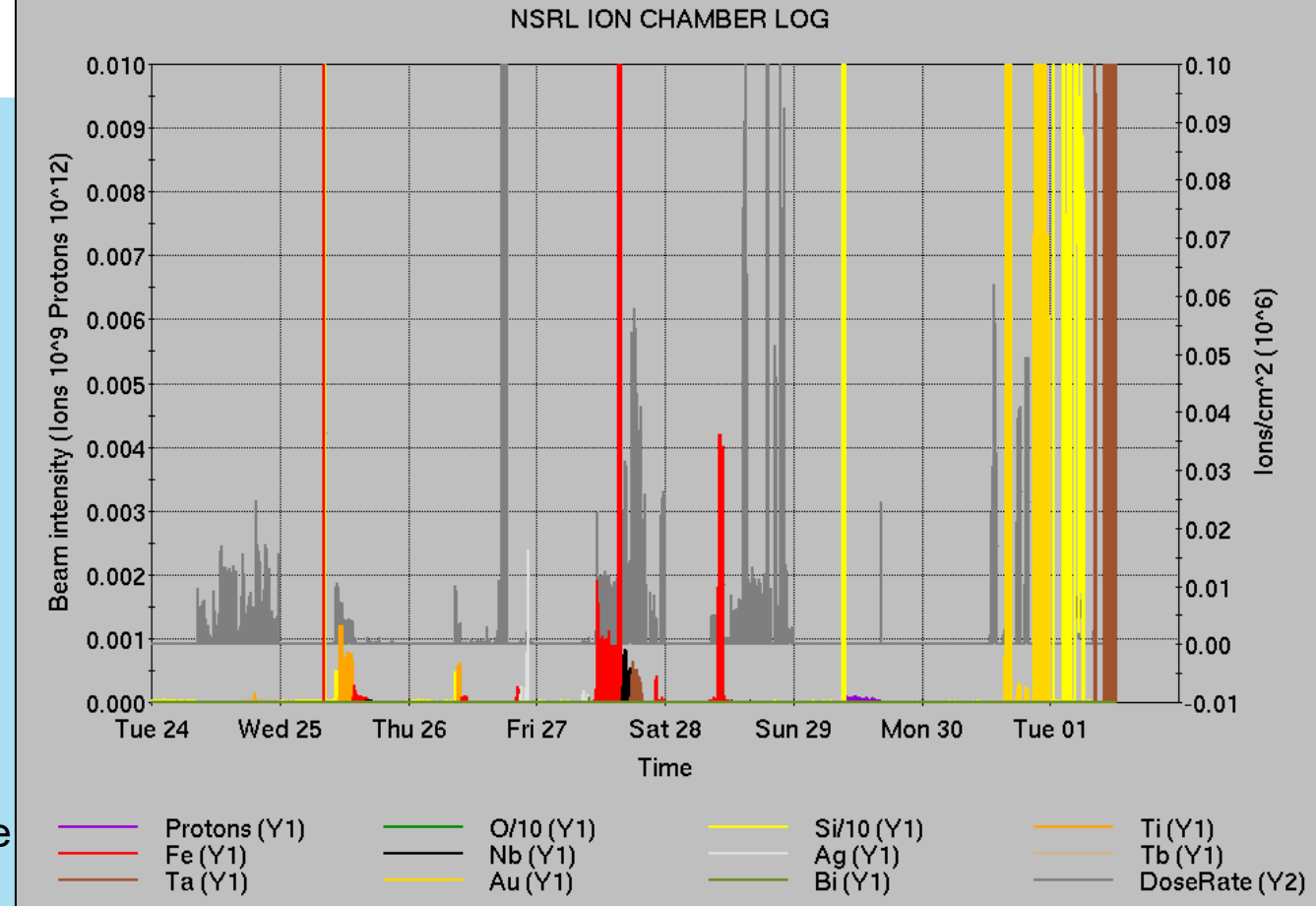
Other notes

- BLM abort, BBQ lost tune lock on rotator ramp
- BPM abort near end of ramp
- AGS J7 foil PS repaired
- Tandem MP7 Au source failure, changed
- AGS RF station IJ failure, delayed dump until relay reset
- AGS access for water leak; E11, G7 repaired behind store
- BtA multiwire issues unresolved (for protons)
- EtB q106 PS failure, replaced
- EBIS eba-q4 water leak, repaired
- CeC Buncher failure, compressor/water faults
- CeC scope and instrumentation trigger issues
- Polarized source intensity
- Other various trips, resets
- *AGS vacuum, Yellow abort kicker, Blue Main PS issues ongoing*

Over 109 failure hours logged in total (mild, concurrent, severe) across all programs.



Over 72 hours logged for CeC work with electron beam

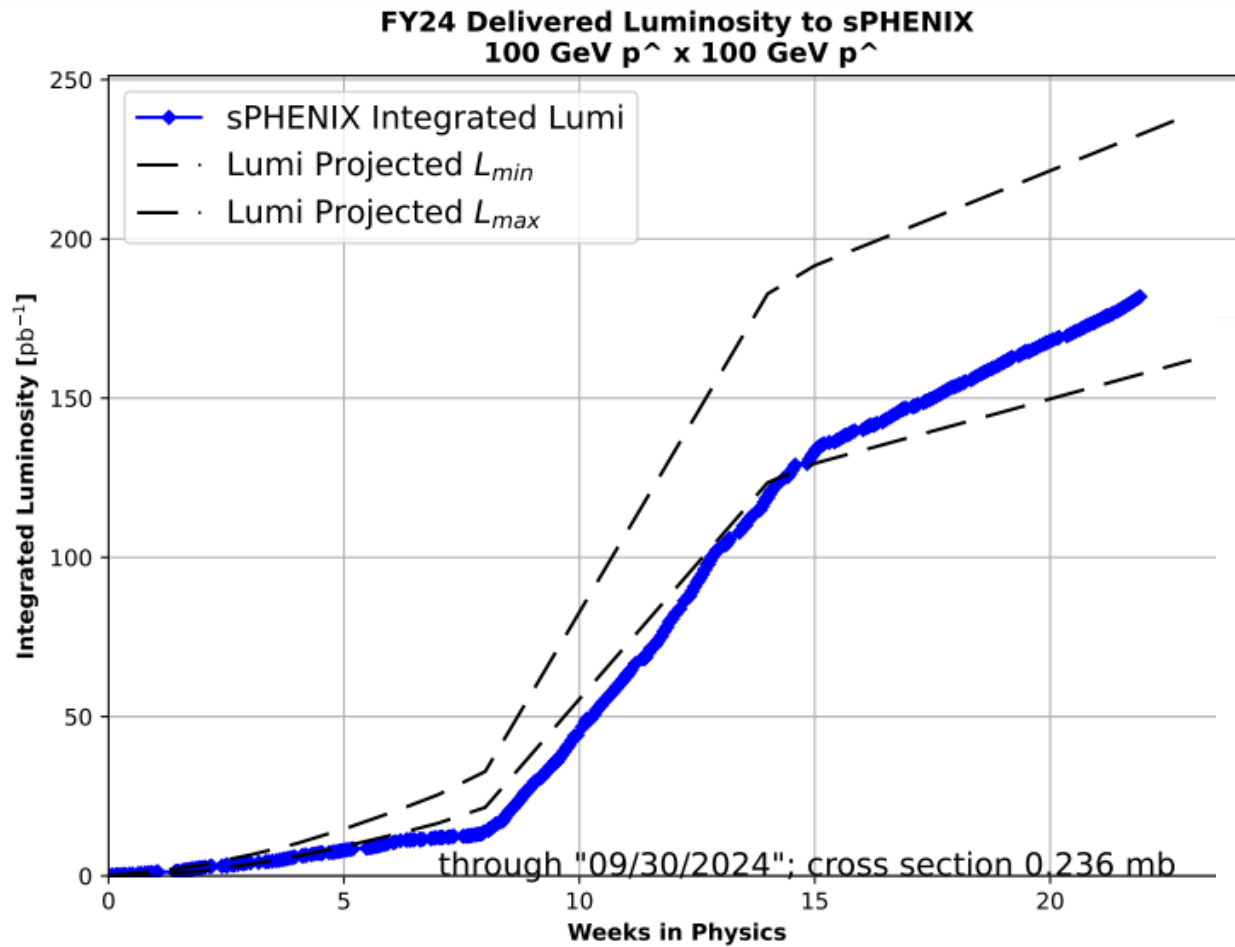


| | Linac | Tandem | EBIS | Booster | AGS | ATR | RHIC | ERL | Other | Total |
|--------|-----------|-----------|-----------|-----------|-----------|-----------|-------------|----------|------------|--------------|
| Total | 45 (0) | 7 (36) | 14 (4) | 8 (14) | 9 (14) | 26 (2) | 265 (25) | 0 (0) | 11 (16) | 385 (111) |
| RF | 27 (0) | 0 (0) | 3 (0) | 0 (0) | 1 (0) | 0 (0) | 1 (0) | 0 (0) | 4 (8) | 36 (8) |
| PS | 11 (0) | 3 (6) | 9 (4) | 0 (0) | 5 (7) | 18 (2) | 190 (5) | 0 (0) | 0 (1) | 236 (25) |
| Vacuum | 2 (0) | 4 (30) | 2 (0) | 6 (13) | 0 (0) | 0 (0) | 56 (15) | 0 (0) | 4 (4) | 74 (62) |
| Inst | 0 (0) | 0 (0) | 0 (0) | 0 (0) | 1 (2) | 4 (0) | 5 (3) | 0 (0) | 0 (3) | 10 (8) |
| Other | 5 (0) | 0 (0) | 0 (0) | 2 (1) | 2 (5) | 4 (0) | 13 (2) | 0 (0) | 3 (0) | 29 (8) |

Reminder from Operations

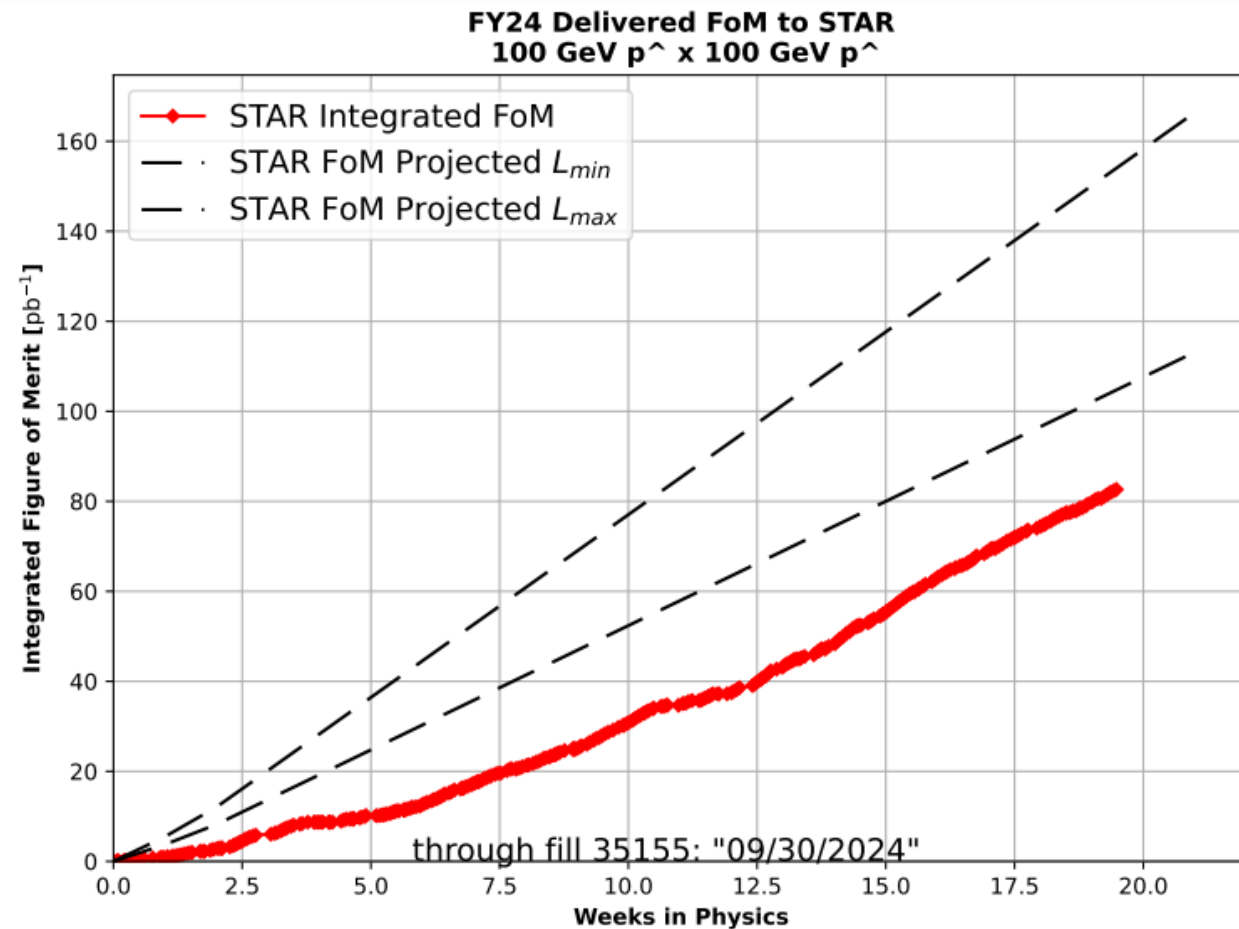
- BLIP/Linac shut down.
- MCR continues Operations for:
 - NSRL – 5 days this week, including setup for NASA biology 6-day weeks upcoming.
 - EBIS 2 MeV protons insufficient for Booster operation. Tandem H untested; availability limited by RHIC program.
 - AGS/Booster setups continue, additional to RHIC physics.
 - Injector Au setup in AGS, AtR extraction ready.
 - RHIC beam for Physics stores until Monday 0800.
 - Switch to Au setup; beam in RHIC pending other work.
- CHECK YOUR CALLIN LIST: WCC and ECP updates needed
 - Initial failure response often involves ECP consult. Ensure your Group callin list contains this information.
 - Callin lists should be accurate in terms of personnel and time off.
 - https://www.cadops.bnl.gov/Operations/personnel/call_in_lists/
 - Note: Core Electrical contacts listed/managed on ESSHQ callin list
https://www.cadops.bnl.gov/Operations/personnel/call_in_lists/call_in_list.php?group=esshq
- CHECK AND EDIT YOUR OWN CONTACT INFO
 - <http://directory.pbn.bnl.gov/>

Preliminary delivered Luminosity, Figure of Merit (LP²) data for RHIC

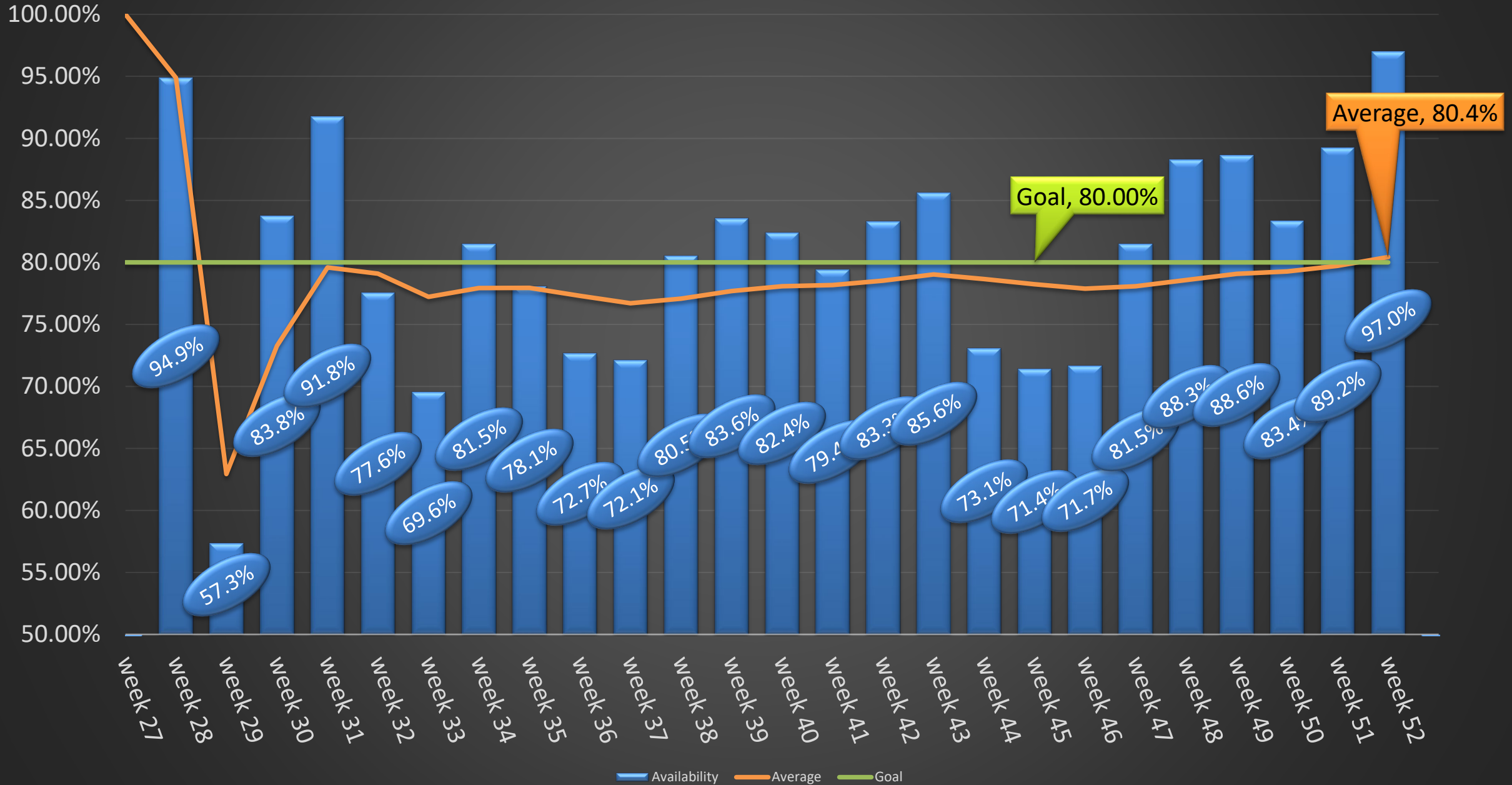


Courtesy R. Terheide

Note: singles corrections applied to integrated lumi plot; updated projection includes crossing angle considerations



Availability: RHIC Run-24



Mean Time Between Failure, Mean Time To Repair, Average Failure Hours per Day (cryo start to cryo end date)

