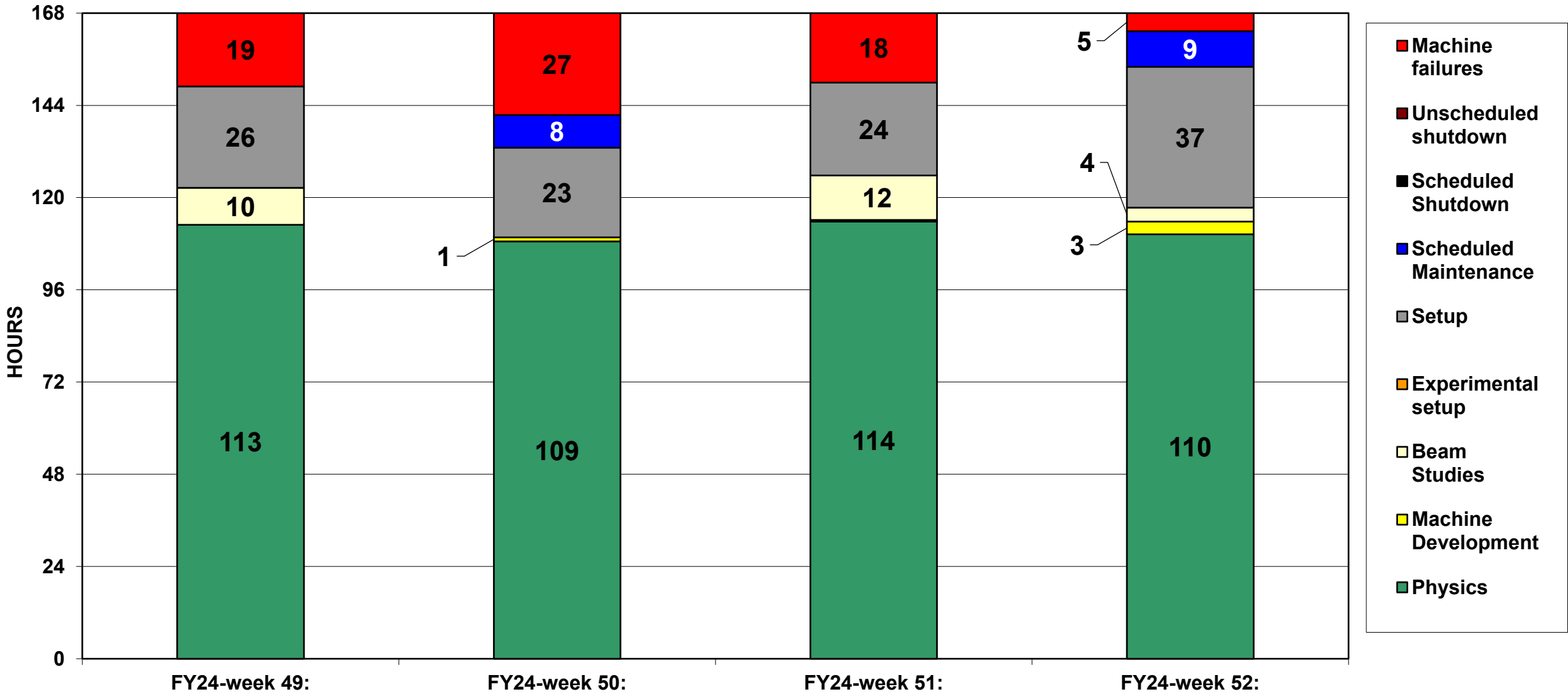
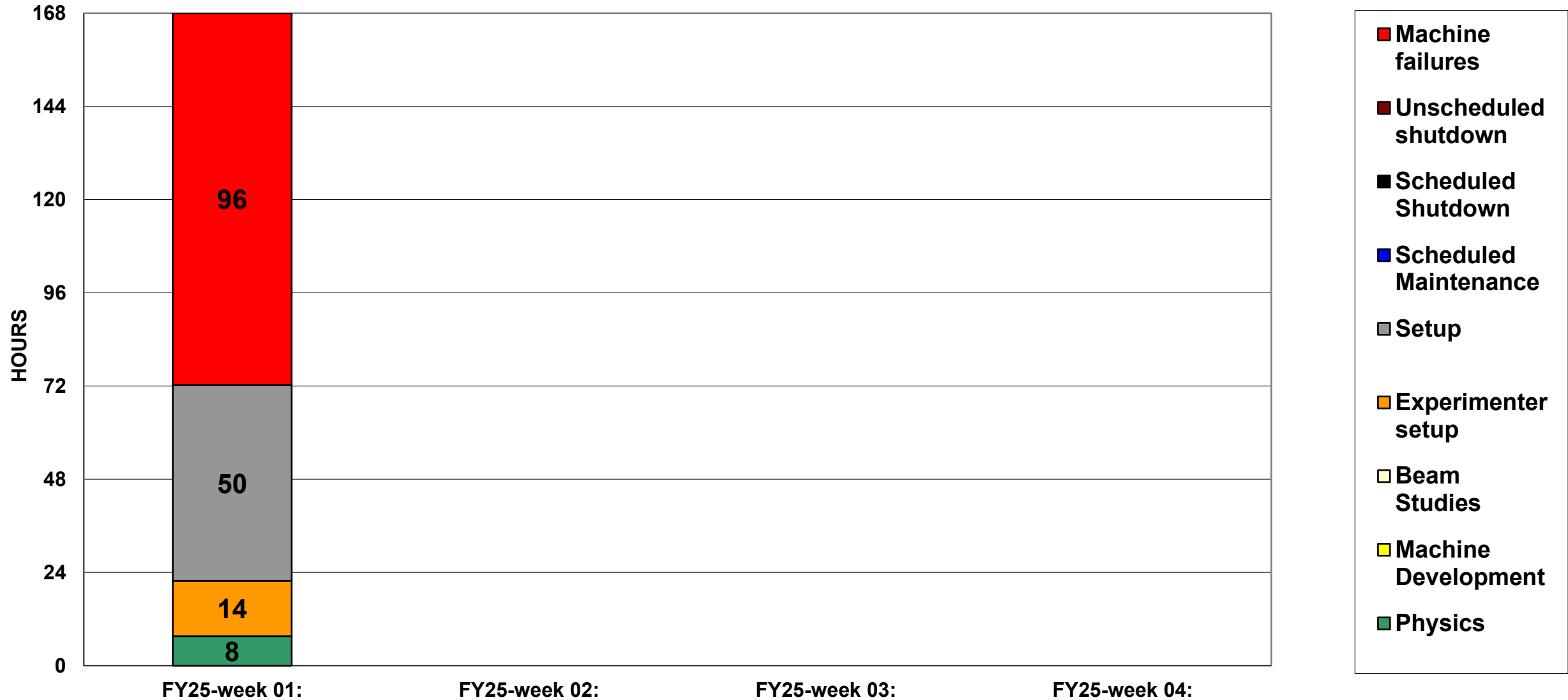


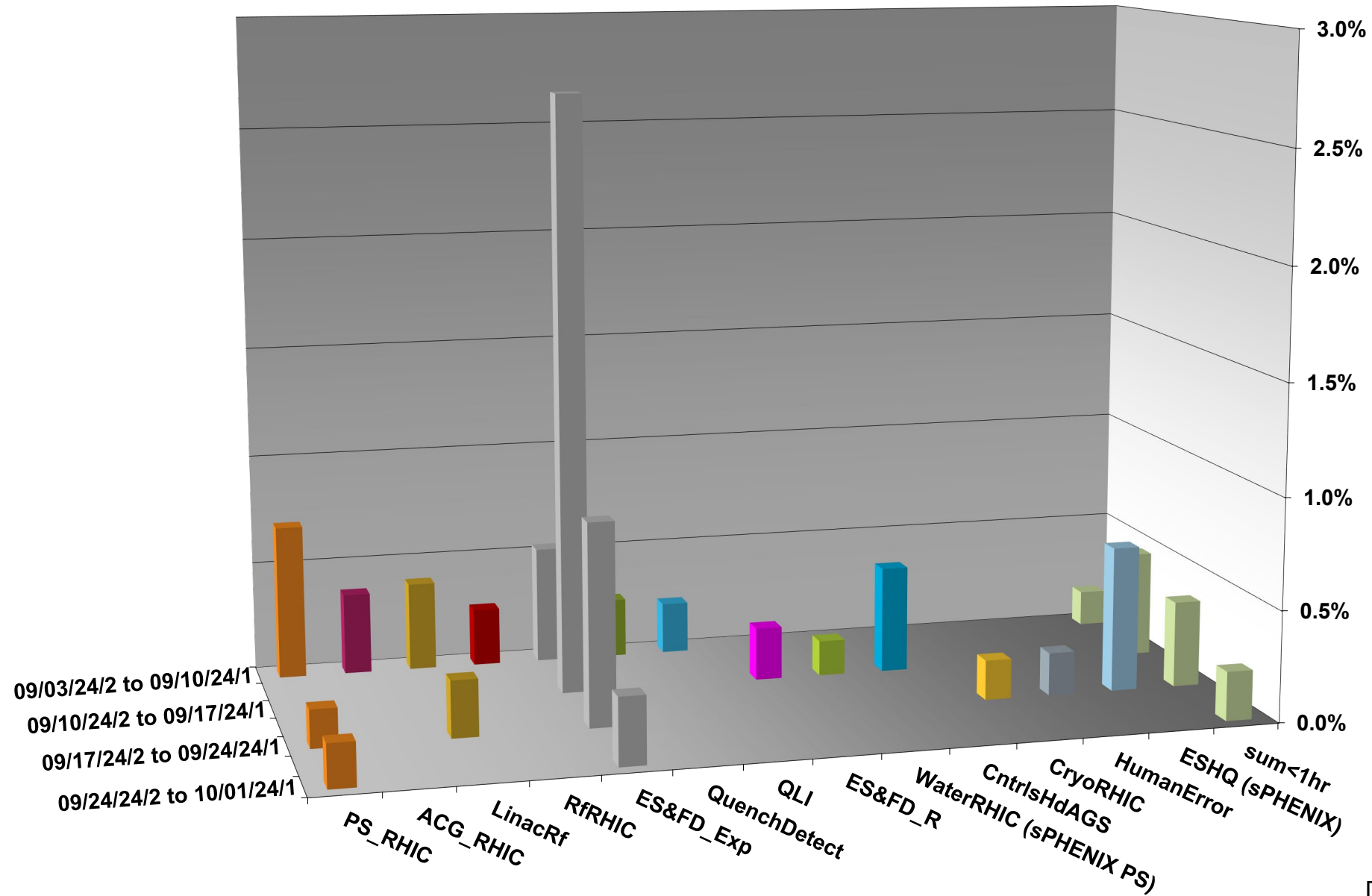
C-AD ACTIVITY SEPTEMBER 2024



C-AD ACTIVITY October 2024

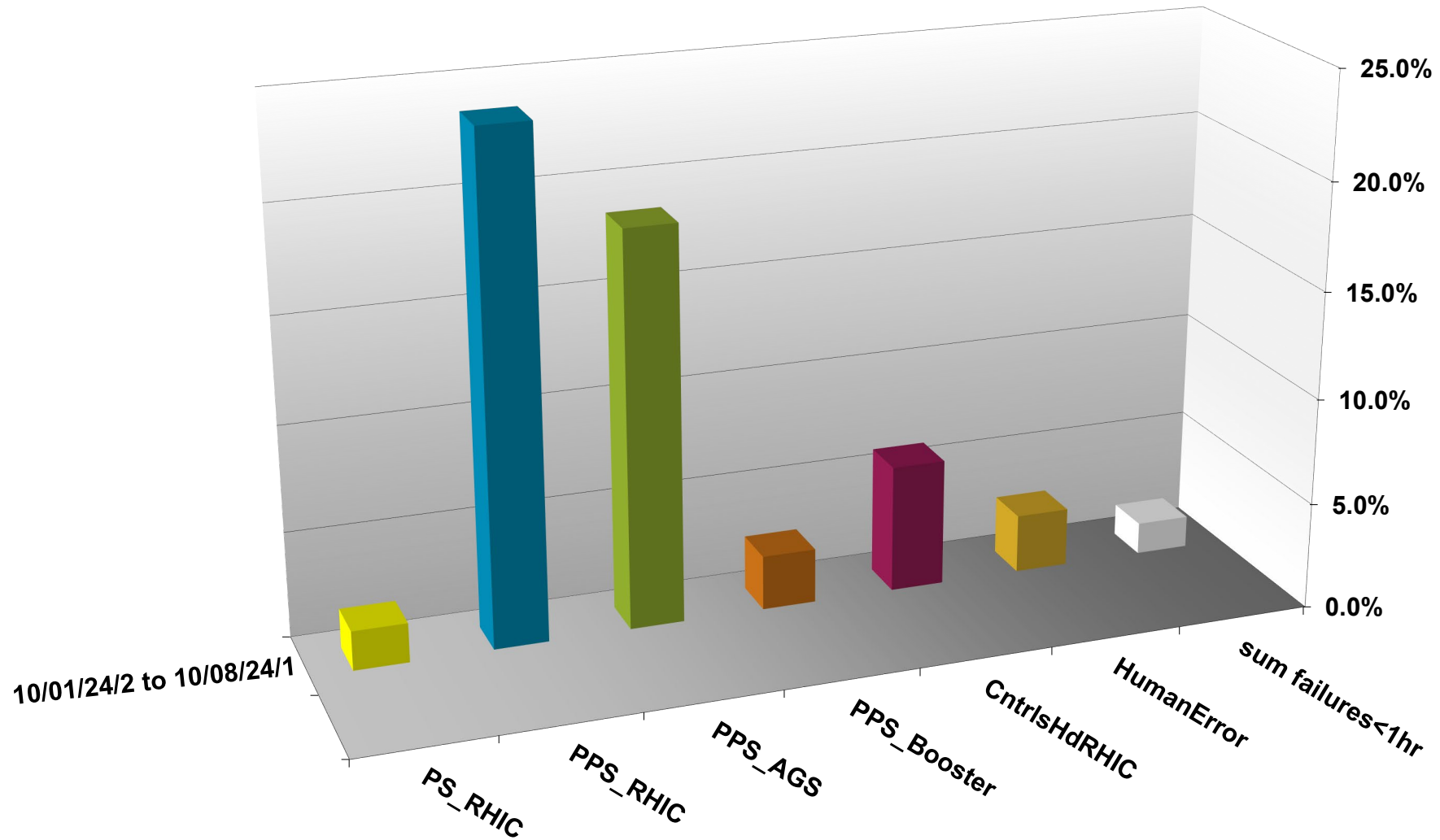


INTEGRATED FAILURES (GREATER THAN ONE HOUR) BY SYSTEM - SEPTEMBER 2024



Data courtesy C. Naylor

INTEGRATED FAILURES (GREATER THAN ONE HOUR) BY SYSTEM -- October 2024



Operations for BLIP

10/1-8/2024:

BLIP program in
Shutdown through January
2025.

- Future **schedule TBA**

Availability: **n/a**

No BLIP
this past week

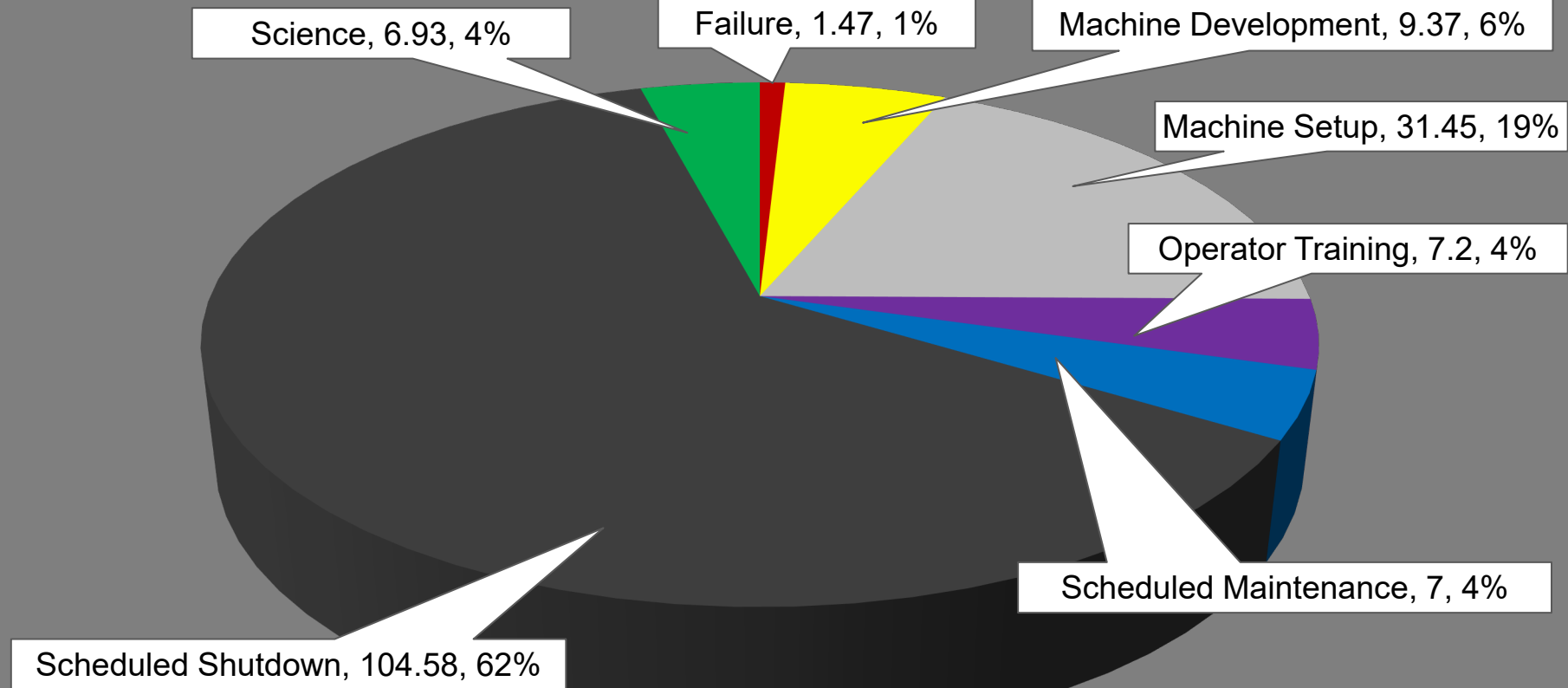
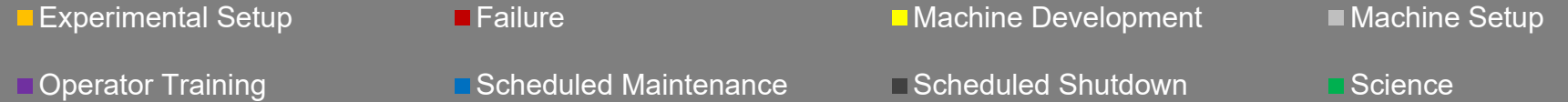
NSRL activity past week: 10/1-8/2024 (as of 0800)

NSRL running continues, setup for NASA and student program...

8 EBIS ions including set up of GCR modes. Development/Setup for Tandem protons took place.

Running 24-C schedule since 22 May. Schedule posted, updates to 1 November for beams & users until November shutdown. Run 25-A TBD.

NSRL Hours



Availability: 97.4%

Notes from Operations

Notable failures (>1 hr)

- Yellow abort kicker failure, cable and feedthrough replaced
- AGS G09C extraction bump failure, ongoing; reconfigured G09, H11 BLW cables to one PS
- ev-newfill event triggered, interrupts RF storage cavity conditioning (human error)
- Controls FEC failure cfe-4b-rtdl fires DX heaters, other failures; local reset required.
- 7c-ps3 FEC failure interrupts hysteresis ramps
- Blue QLI on downramp (2x); ongoing, ramp slower
- 1010A Loss Monitor system failure, V118 board replaced.
- Yellow abort kicker failure, ALE PS replaced

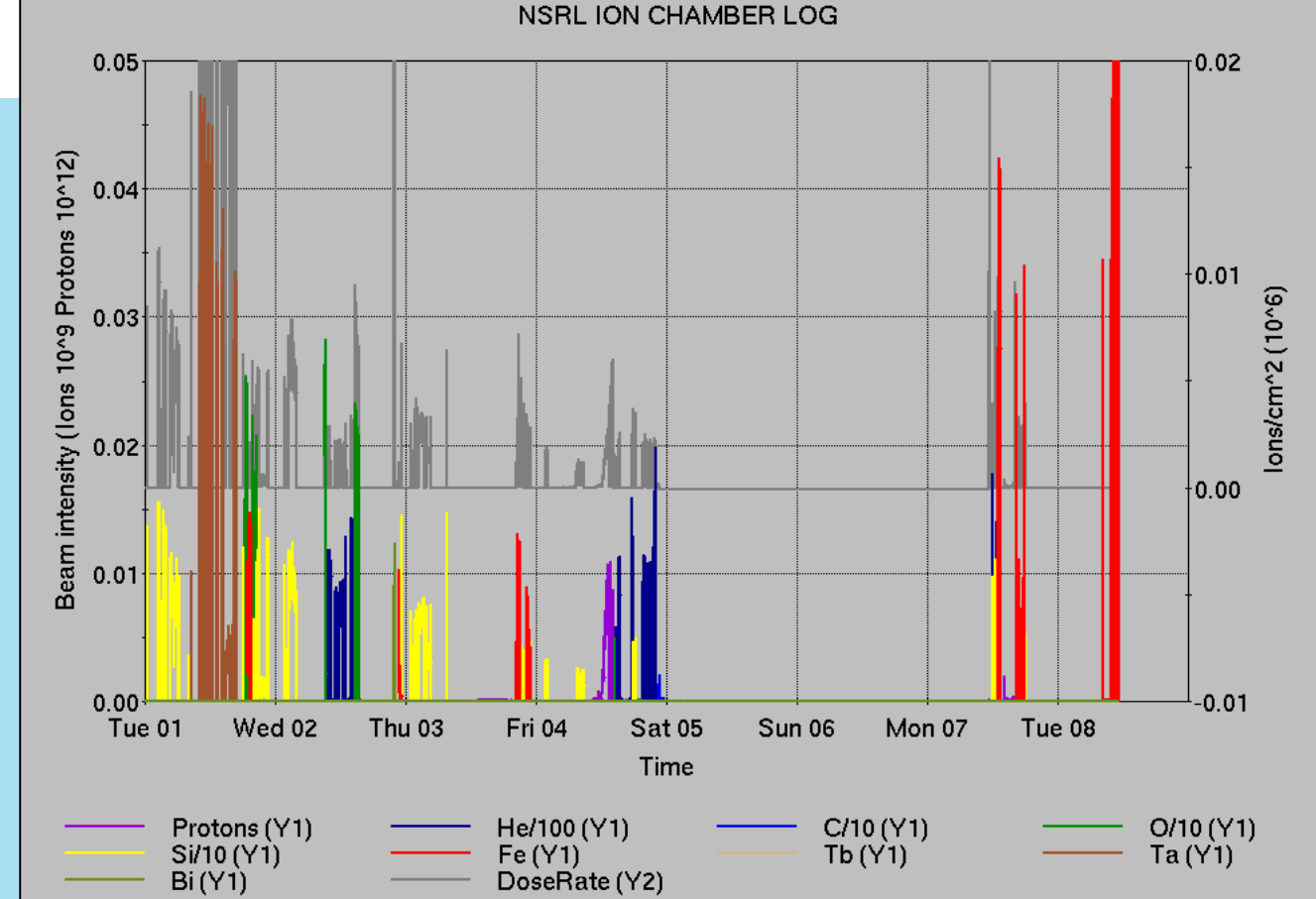
Other notes

- BtA vacuum gauge interlocks, bypassed
- Booster F4 BLW PS failure, ongoing; retuned Booster extraction
- Access for BA2 RF repairs
- Booster be4-th-ps water leak repaired
- Beam aborts, BPM permit
- Beam aborts, BLM permit
- Other various trips, resets
- *AGS vacuum, Yellow abort kicker, Blue Main PS issues ongoing*

Over 460 failure hours logged in total (mild, concurrent, severe) across both programs.



Over 98 hours logged for CeC setup/work with electron beam



	Linac	Tandem	EBIS	Booster	AGS	ATR	RHIC	ERL	Other	Total
Total	7 (42)	7 (36)	16 (5)	16 (6)	14 (11)	9 (0)	21 (14)	0 (0)	23 (14)	113 (128)
RF	6 (26)	0 (0)	0 (0)	0 (0)	1 (0)	0 (0)	0 (0)	0 (0)	7 (8)	14 (34)
PS	0 (10)	3 (6)	15 (4)	7 (0)	12 (3)	1 (0)	7 (3)	0 (0)	2 (1)	47 (27)
Vacuum	0 (0)	4 (30)	1 (1)	7 (5)	0 (0)	0 (0)	8 (6)	0 (0)	5 (2)	25 (44)
Inst	0 (0)	0 (0)	0 (0)	0 (0)	0 (3)	8 (0)	4 (3)	0 (0)	0 (3)	12 (9)
Other	1 (6)	0 (0)	0 (0)	2 (1)	1 (5)	0 (0)	2 (2)	0 (0)	9 (0)	15 (14)

Reminder from Operations

- MCR continues Operations for:
 - NSRL – 6 days this week, setup and running for NASA biology.
 - EBIS 2 MeV protons insufficient for Booster operation. Tandem H established; availability limited by RHIC program.
 - AGS/Booster setups continue, additional to RHIC physics.
 - Injector performance limited pending PPG repairs.
 - Au/proton TtB mode switch, GCR setup continues.
 - RHIC beam for setup, experiment setup, Physics stores until Monday 0800.
 - Switch to Au setup; beam in RHIC pending other work.
- CHECK YOUR CALLIN LIST: WCC and ECP updates needed
 - Initial failure response often involves ECP consult. Ensure your Group callin list contains this information.
 - Callin lists should be accurate in terms of personnel and time off.
 - https://www.cadops.bnl.gov/Operations/personnel/call_in_lists/
 - Note: Core Electrical contacts listed/managed on ESSHQ callin list
https://www.cadops.bnl.gov/Operations/personnel/call_in_lists/call_in_list.php?group=esshq
- CHECK AND EDIT YOUR OWN CONTACT INFO
 - <http://directory.pbn.bnl.gov/>

Availability: RHIC Run-24

