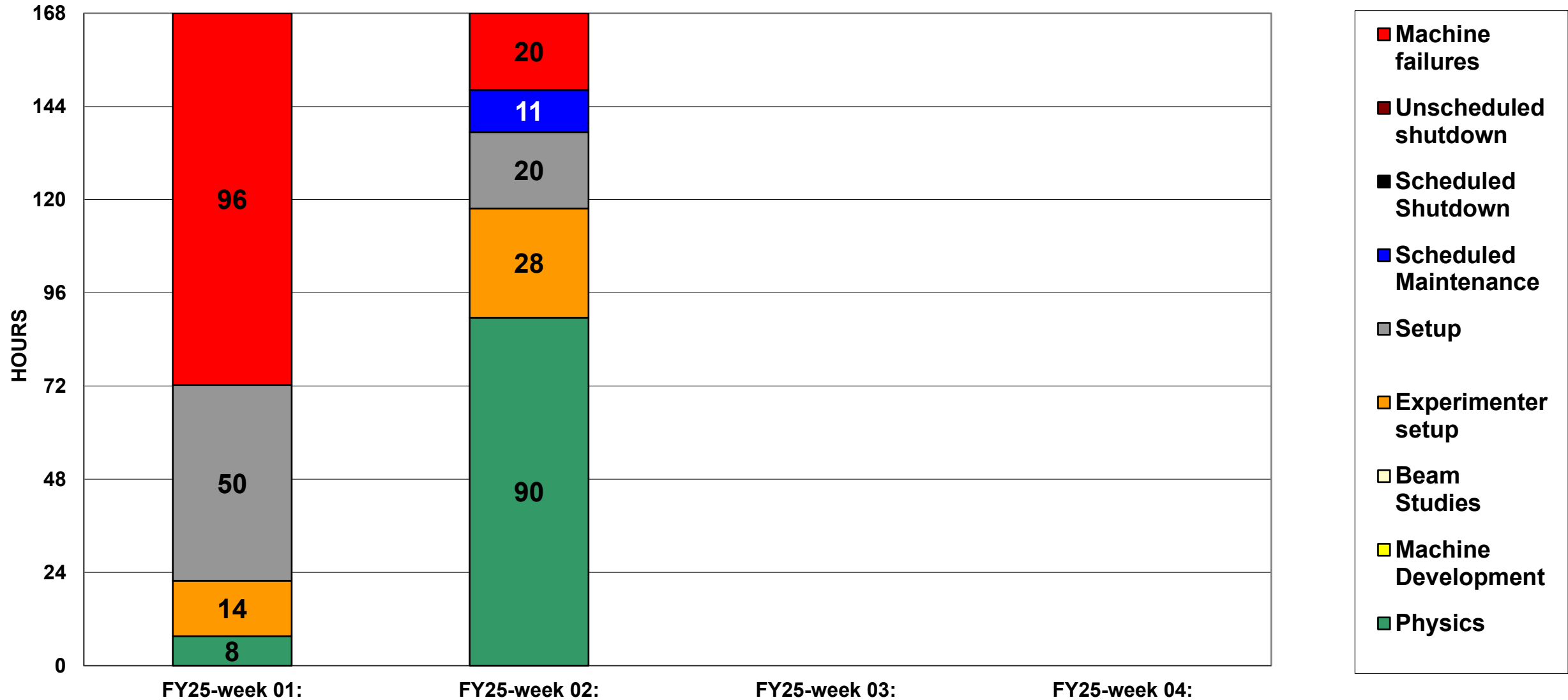
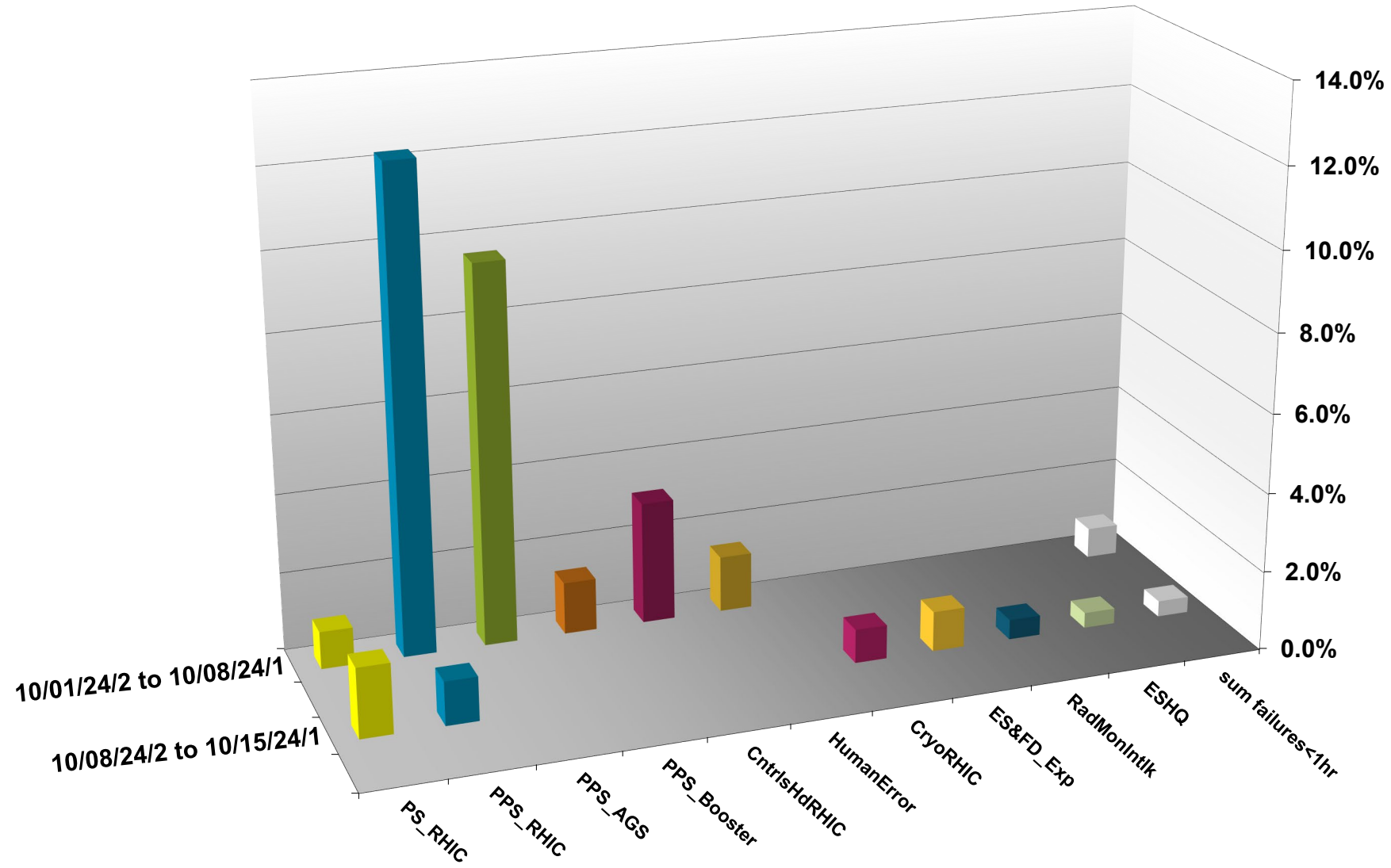


# C-AD ACTIVITY October 2024



# INTEGRATED FAILURES (GREATER THAN ONE HOUR) BY SYSTEM -- October 2024



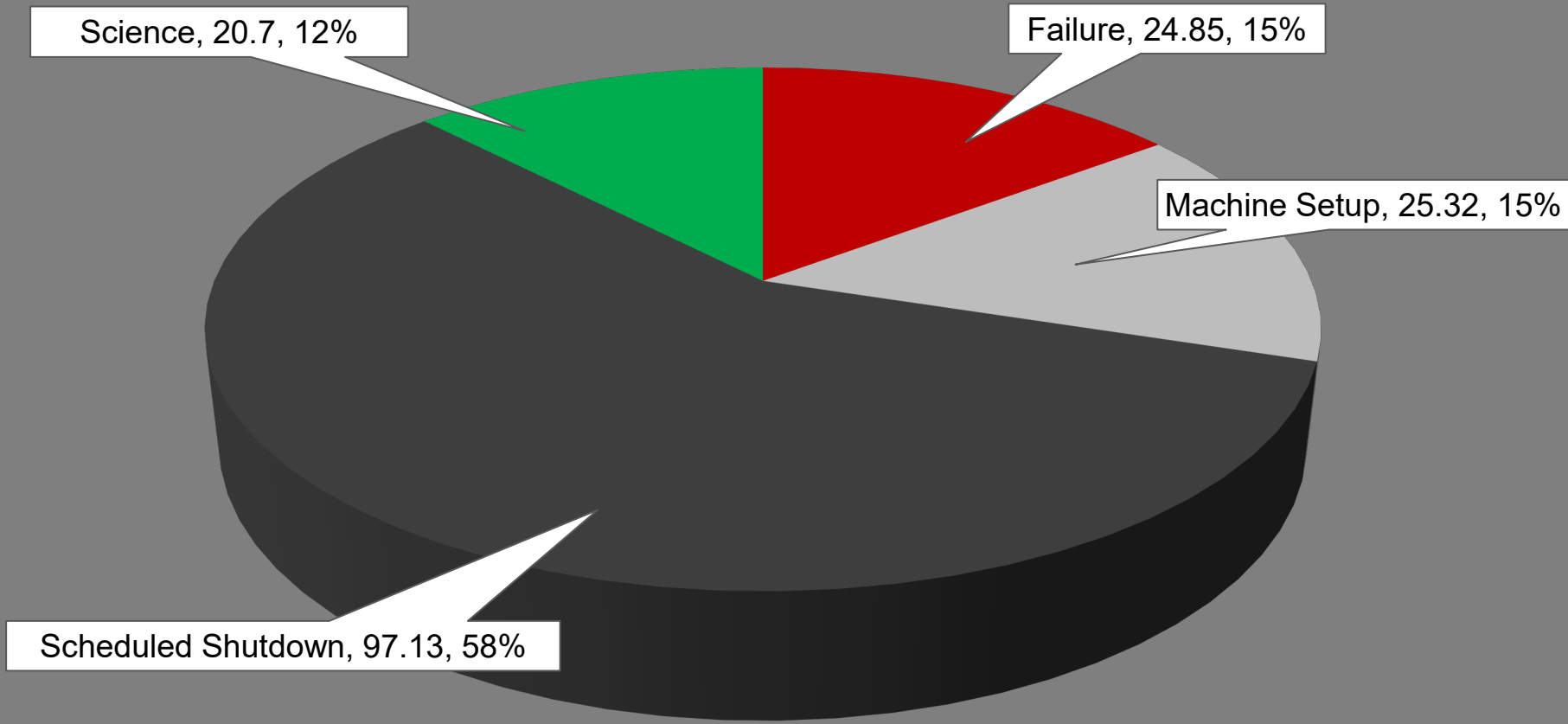
# NSRL activity past week: 10/8-15/2024 (as of 0800)

NSRL running continues, setup for NASA and student program...

4 EBIS ions, Tandem protons & Au running for single ions/GCR modes.

Running 24-C schedule since 22 May. Schedule posted, updates to 31 October for beams & users until November shutdown. Run 25-A TBD.

## NSRL Hours



**Availability: 64.9%**

# Notes from Operations

## Notable failures (>1 hr)

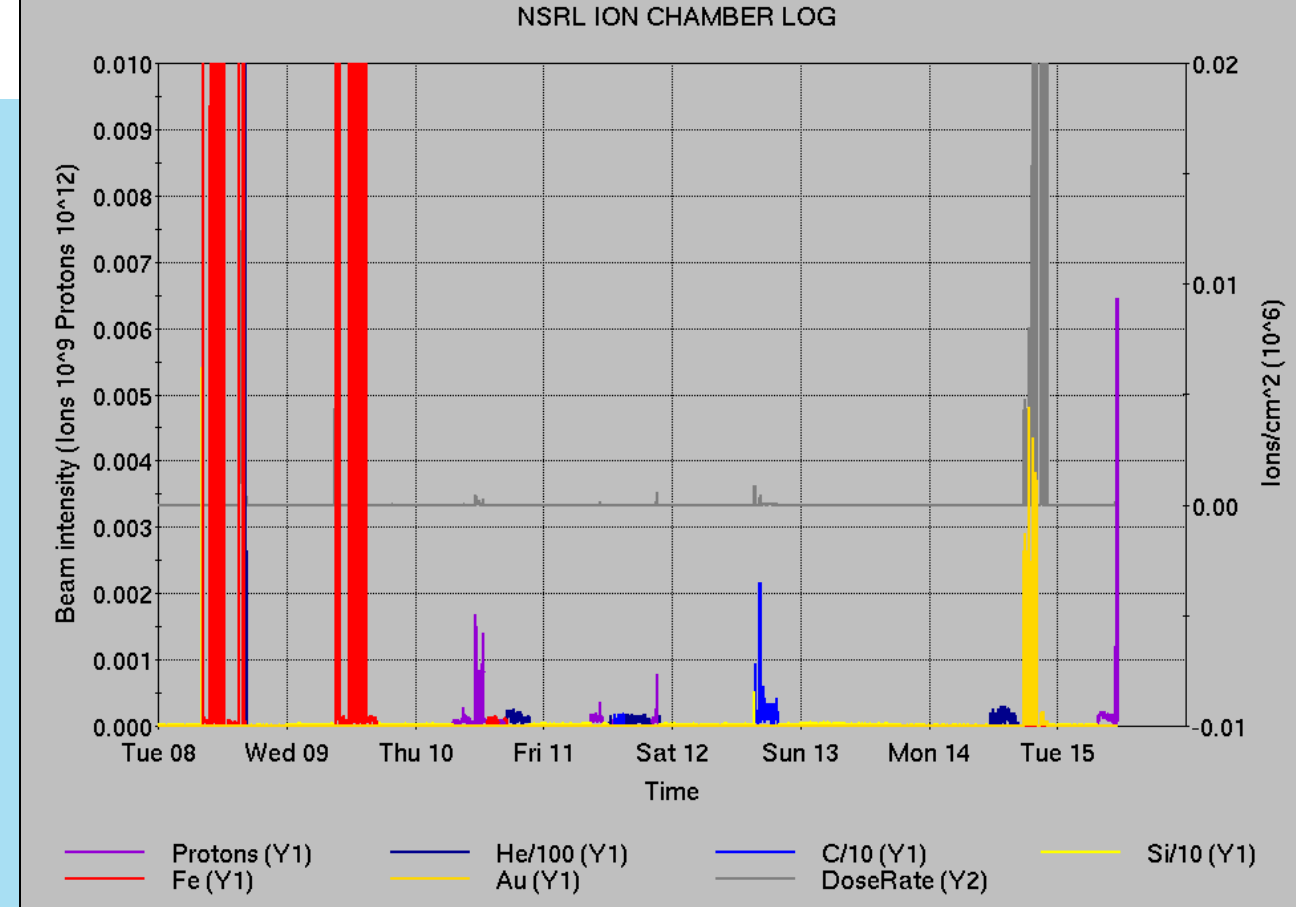
- EBIS LEBT solenoid failure, ongoing, affecting NSRL
- BLM abort, with BLAM limit: transition losses
- BLM abort RHIC bi5-tq4 failure related to lead flow configuration issues
- Blue abort kicker failure, access to repair fiber optic
- STAR access, crate fuse replacement
- sPHENIX access, BLM installation

## Other notes

- ACS failures of HMI panels, AGS key tree
- Booster F4 BLW PS failure, ongoing
- BLM aborts: gap cleaning attempt, injection losses, transition losses
- RHIC YA1 RF trips,
- AGS Access, L10 cavity work for bunch merges
- Beam aborts, BPM permit
- Tandem access for MP6 source, resweep, other issues
- Tandem foil changes, tuning
- sPHENIX magnet trip; left off for some zero-field data
- RHIC permit interlock, bi4-qf7 AC phase fault
- BLM abort, corrector PS trip
- Access for CeC delayed by RHIC RF HMI panel/Windows issue
- Other various trips, resets

Over 558 failure hours logged in total (mild, concurrent, severe) across both programs.

Over 105 hours logged for CeC setup/work with electron beam



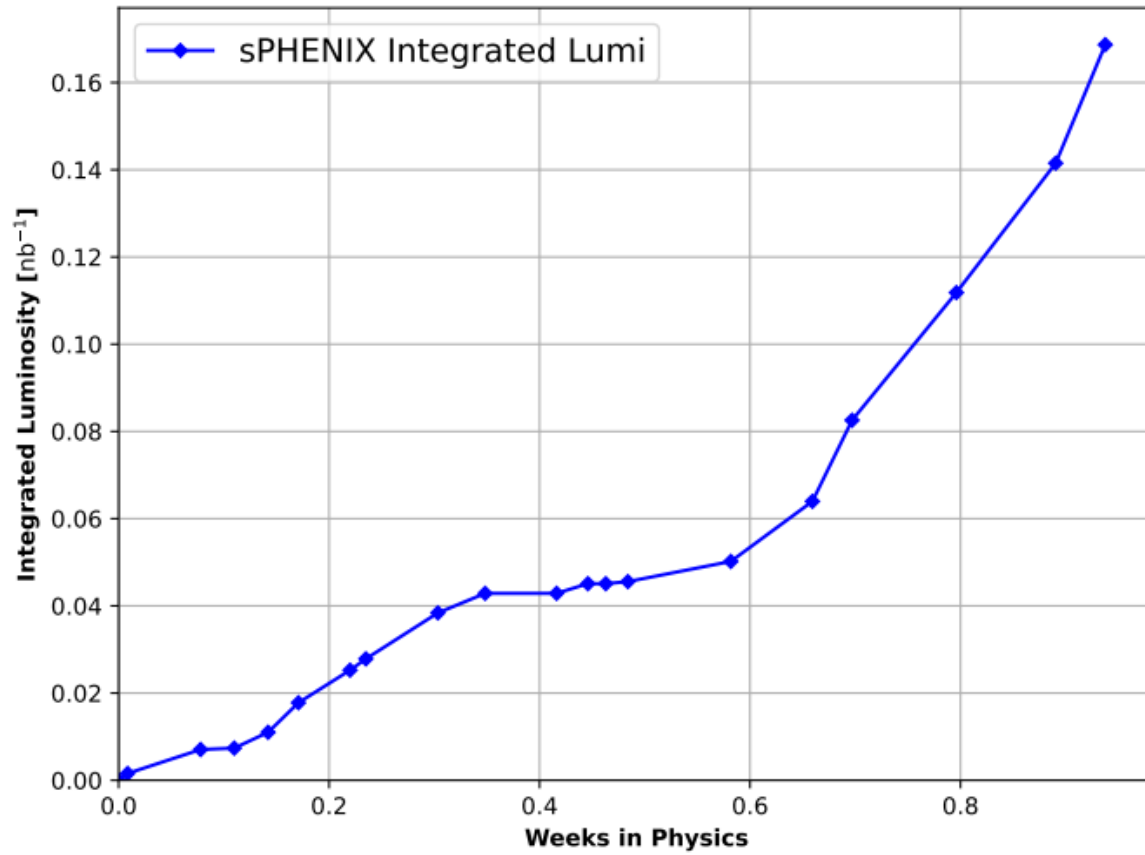
	Linac	Tandem	EBIS	Booster	AGS	ATR	RHIC	ERL	Other	Total
Total	17 (38)	2 (36)	11 (4)	17 (14)	32 (14)	20 (2)	74 (25)	0 (0)	39 (19)	212 (152)
RF	10 (22)	0 (0)	1 (0)	0 (0)	1 (0)	0 (0)	2 (0)	0 (0)	7 (8)	21 (30)
PS	1 (10)	2 (6)	10 (4)	7 (0)	25 (6)	16 (2)	50 (5)	0 (0)	2 (1)	113 (34)
Vacuum	1 (1)	0 (30)	0 (0)	7 (13)	0 (0)	0 (0)	10 (15)	0 (0)	12 (4)	30 (63)
Inst	0 (0)	0 (0)	0 (0)	0 (0)	4 (3)	3 (0)	4 (3)	0 (0)	3 (2)	14 (8)
Other	5 (5)	0 (0)	0 (0)	3 (1)	2 (5)	1 (0)	8 (2)	0 (0)	15 (4)	34 (17)

# Reminder from Operations

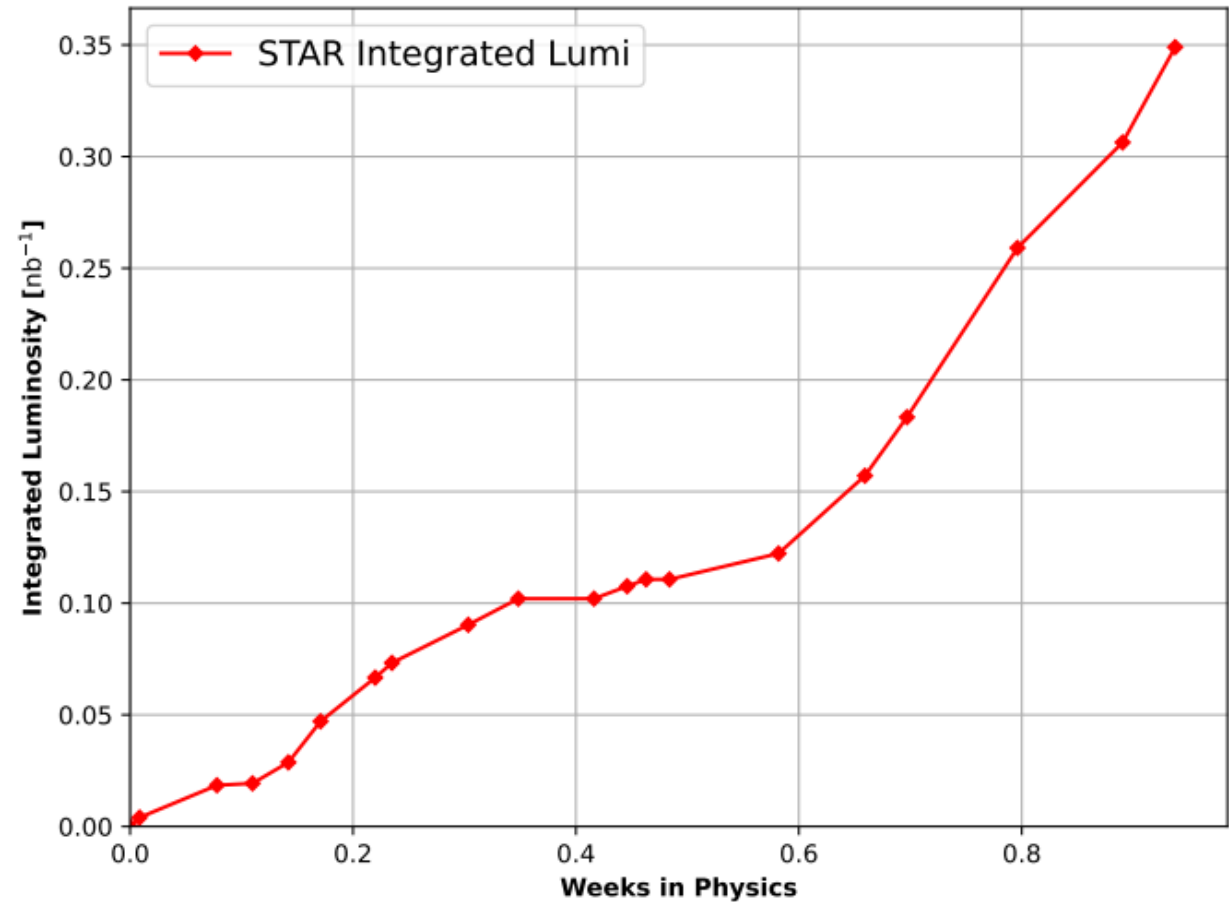
- MCR continues Operations for:
  - NSRL – 6 days this week, setup and running for NASA biology.
    - EBIS 2 MeV protons insufficient for Booster operation. Tandem H established; availability limited by RHIC program and TtB switching issues. Other EBIS failures remain.
  - AGS/Booster setups continue, additional to RHIC physics.
    - Injector performance restored
    - Au/proton TtB mode switch & GCR setup continues.
  - RHIC beam for setup, experiment setup, Physics stores until end of run Monday.
- ***NOTE: MCR will not be occupied continuously after Monday 10/21.***
  - MCR not staffed overnights or Sundays after 10/21
  - Contact CAS in off hours (x2024) for urgent issues when MCR is not staffed.

# Preliminary delivered Luminosity for RHIC Au

FY24 Delivered Luminosity to sPHENIX  
100 GeV Au x 100 GeV Au



FY24 Delivered Luminosity to STAR  
100 GeV Au x 100 GeV Au



Courtesy R. Terheide

# Availability: RHIC Run-24

