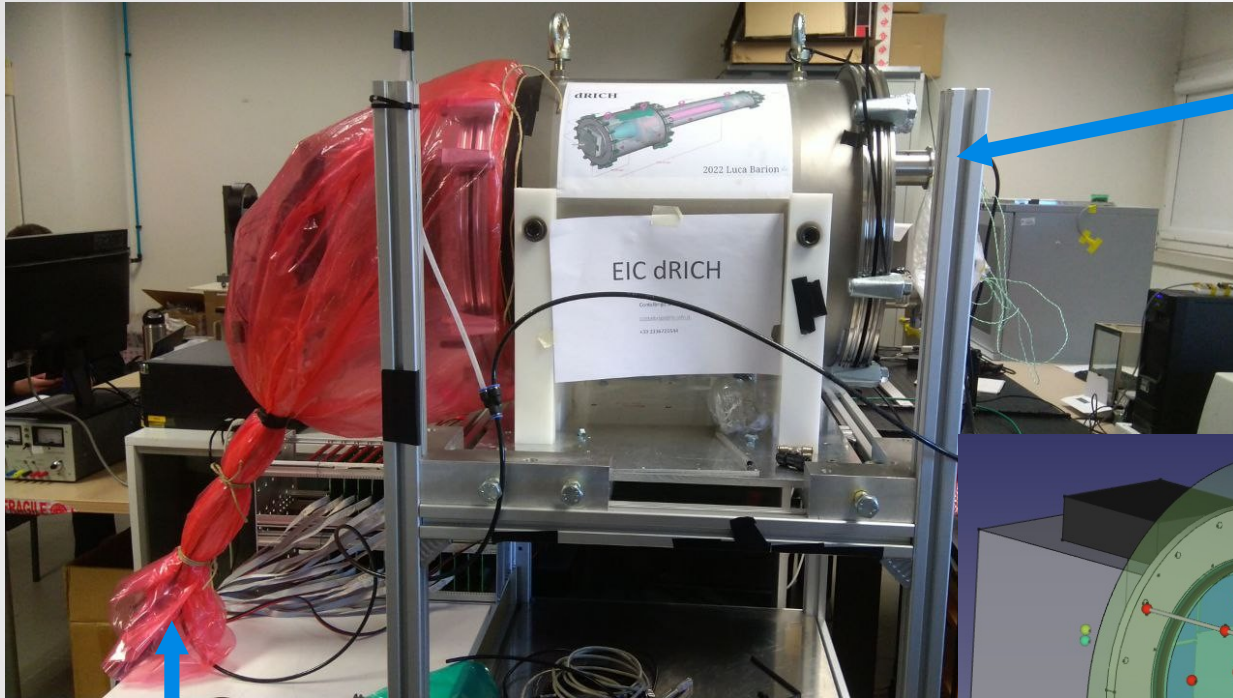


dRICH Meeting 2024-04-17

Luca Barion

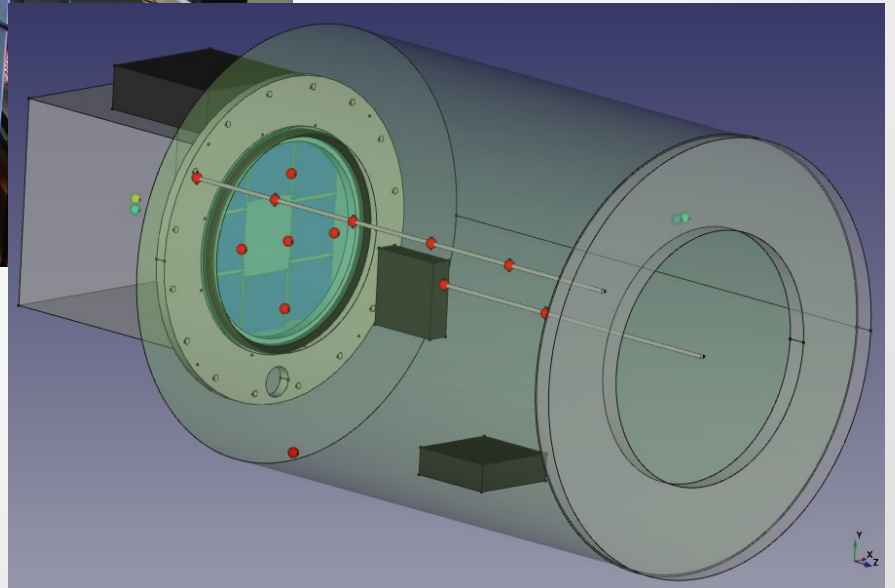
Experimental setup



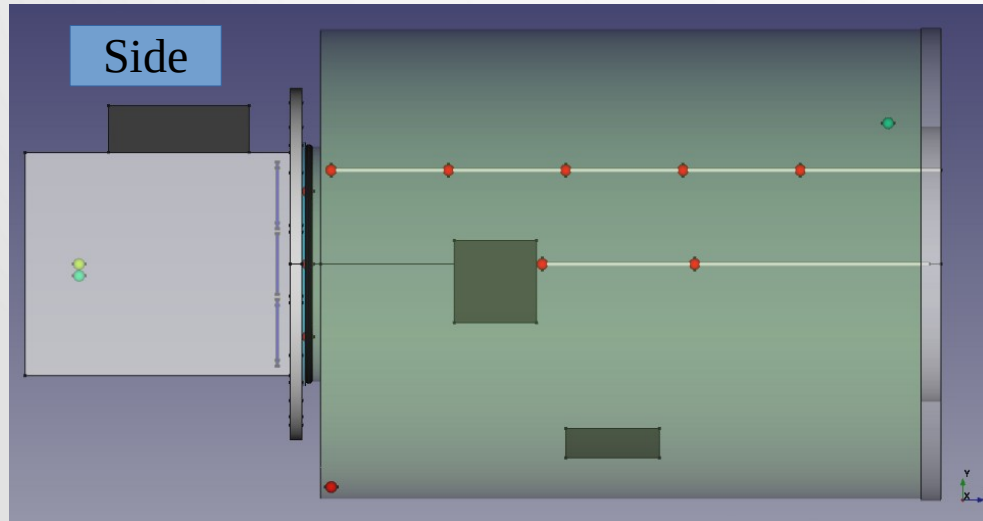
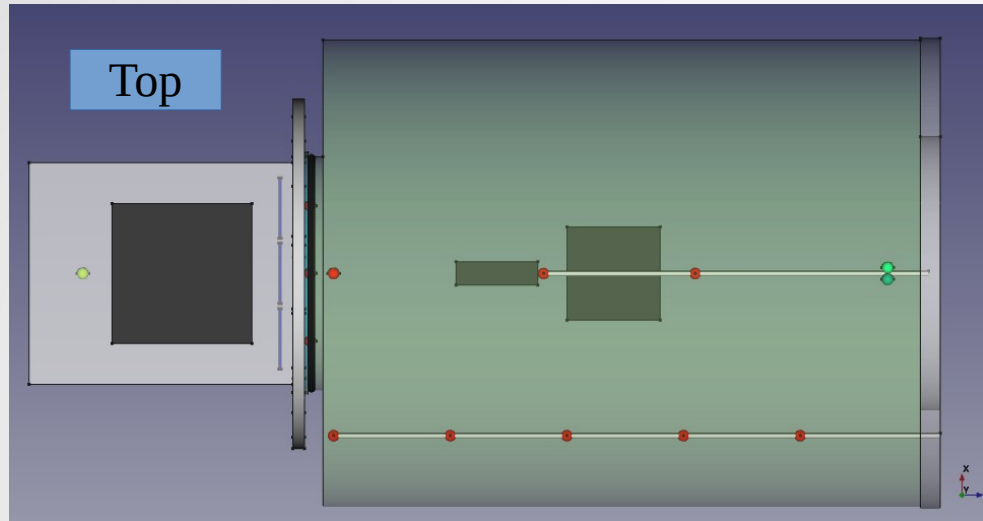
$\geq 5 \Rightarrow 3.5$ l/min
dry air

0.5 l/min
dry air

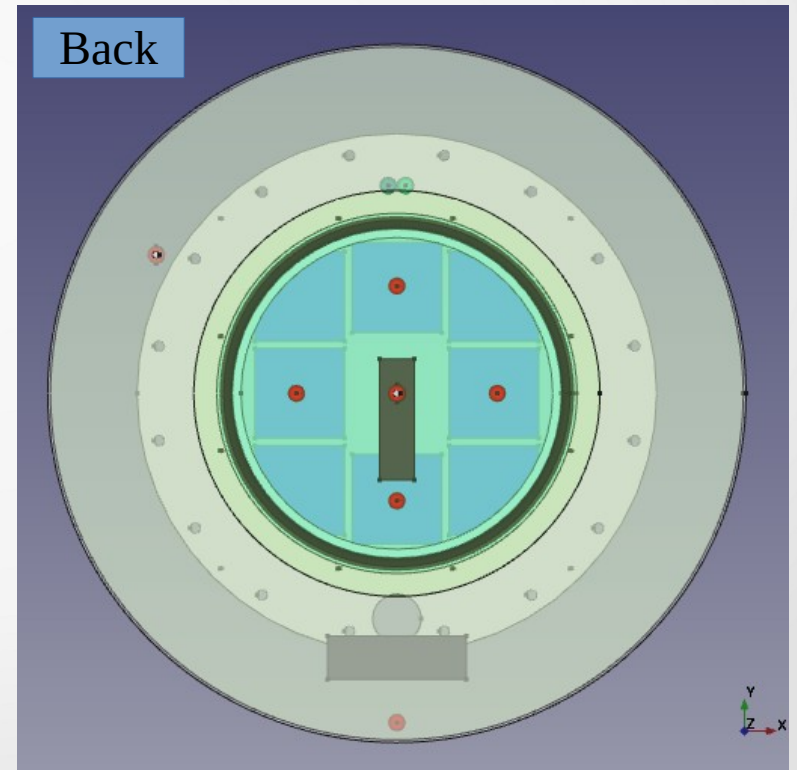
- Fan
- Thermocouple
- Air humidity/temperature



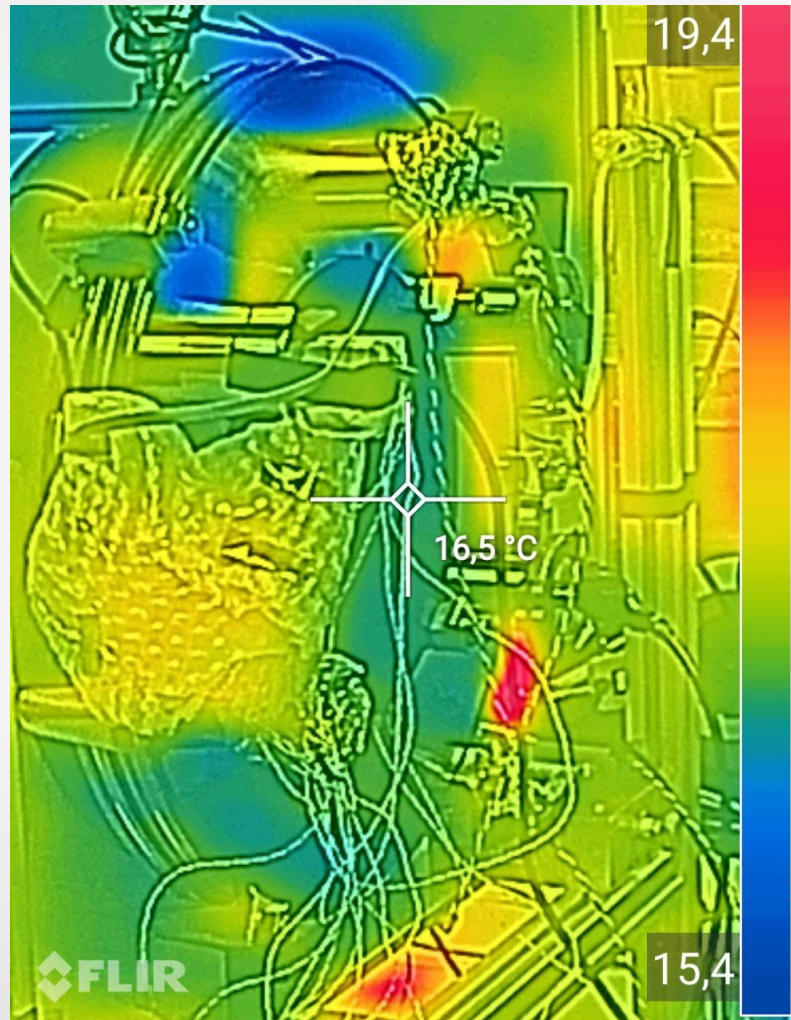
Experimental setup



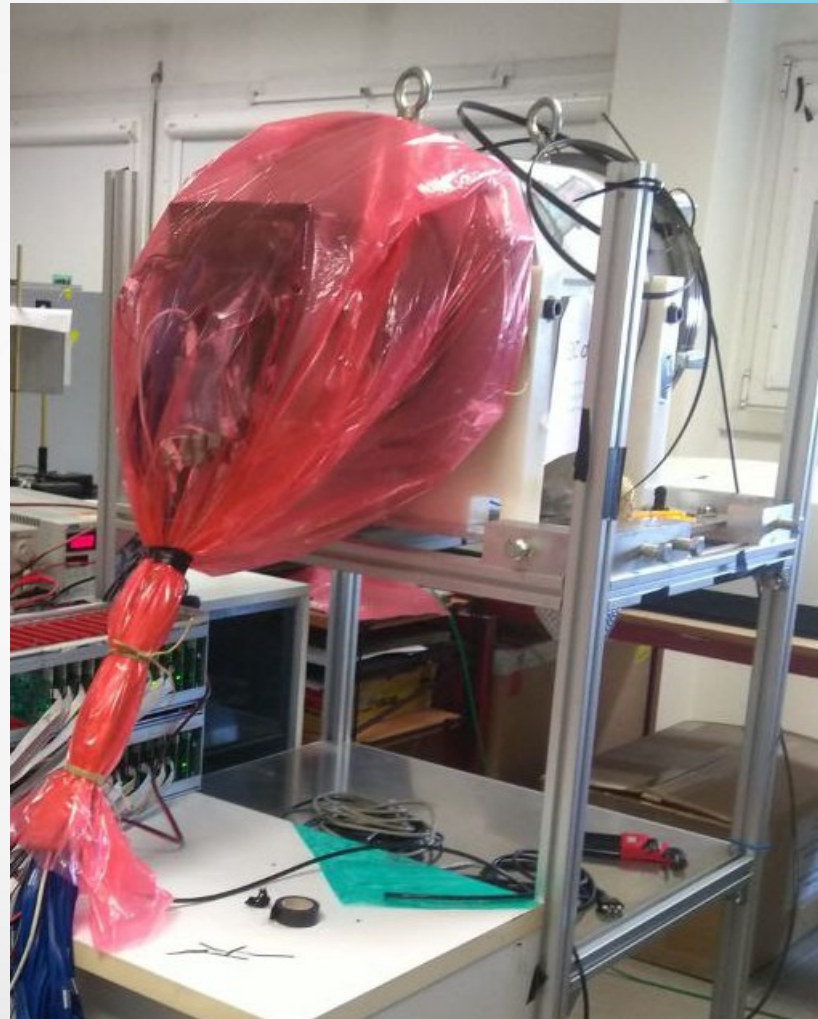
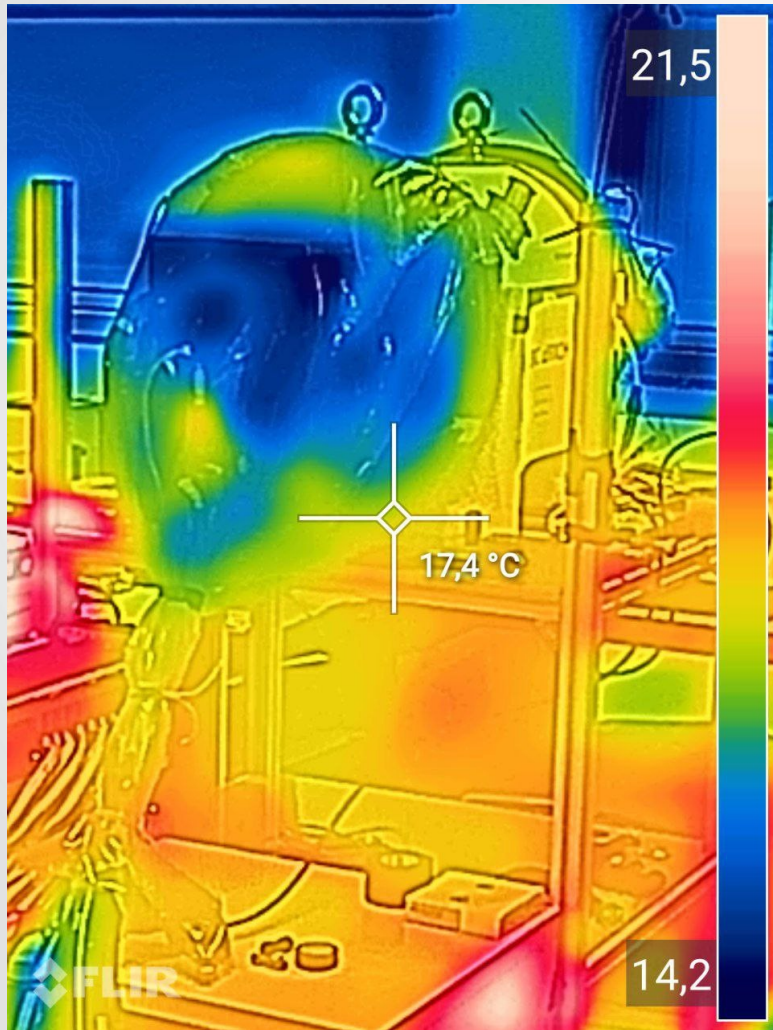
- Fan
- Thermocouple
- Air humidity/temperature



Thermal image back



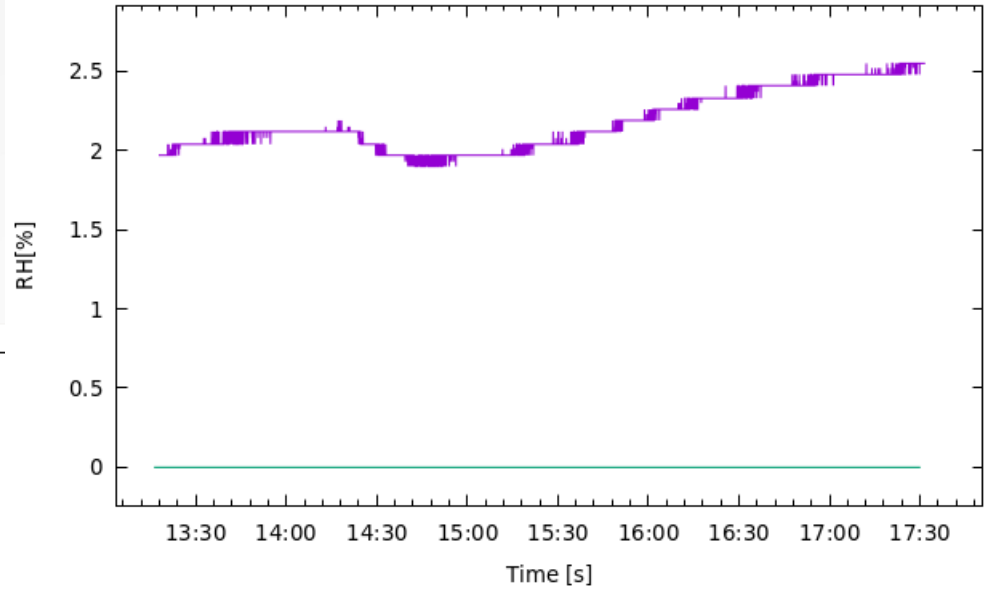
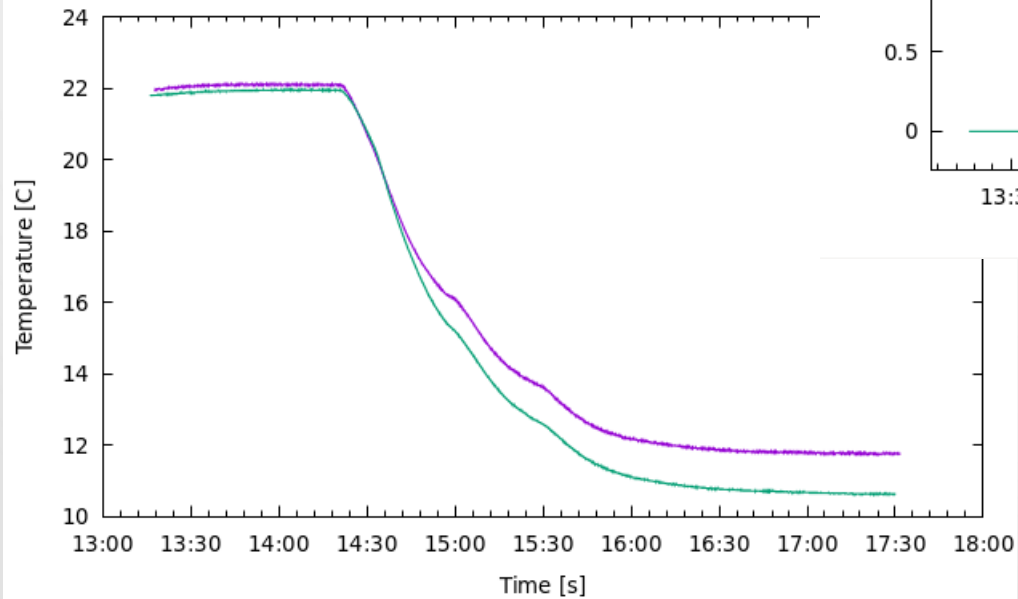
Thermal image front



Detector Box

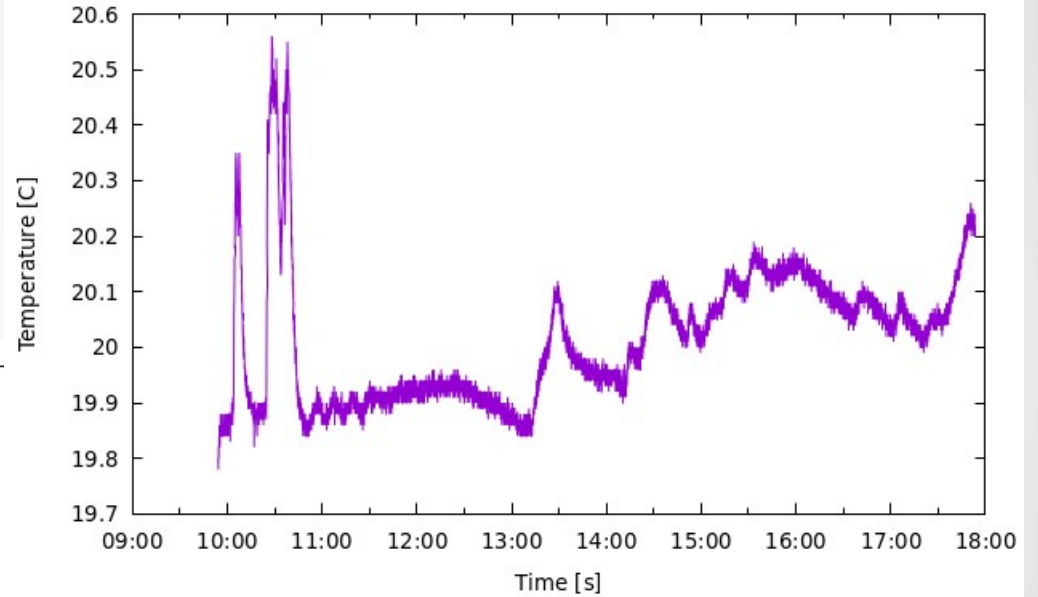
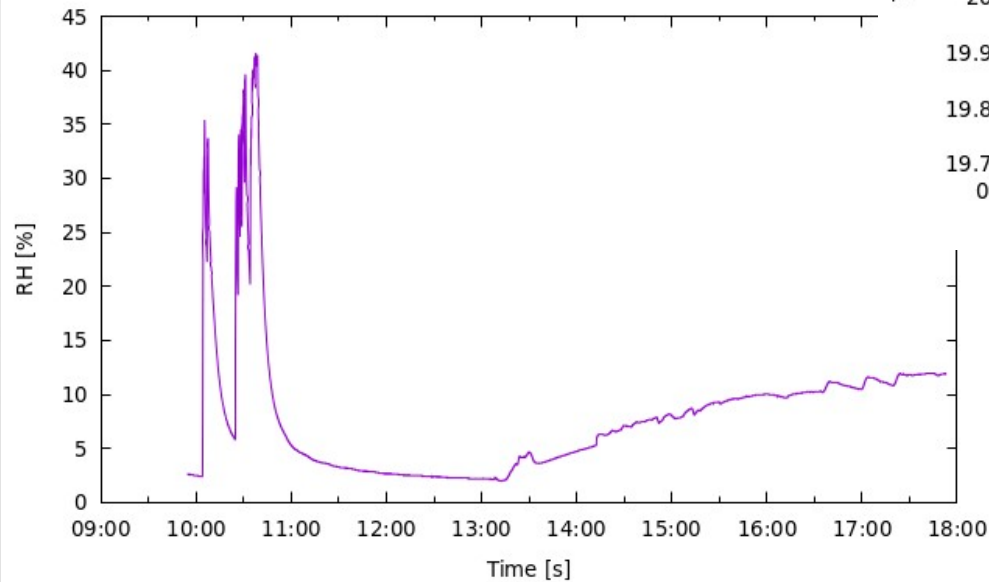
SHT75

B+B

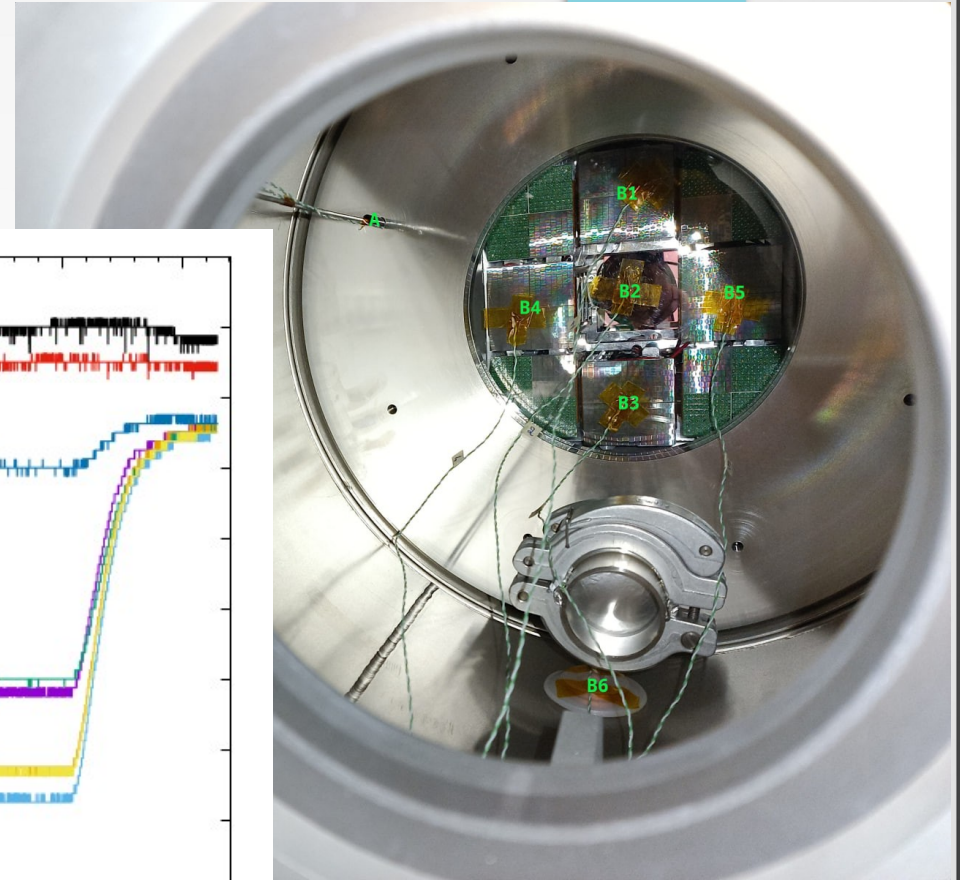
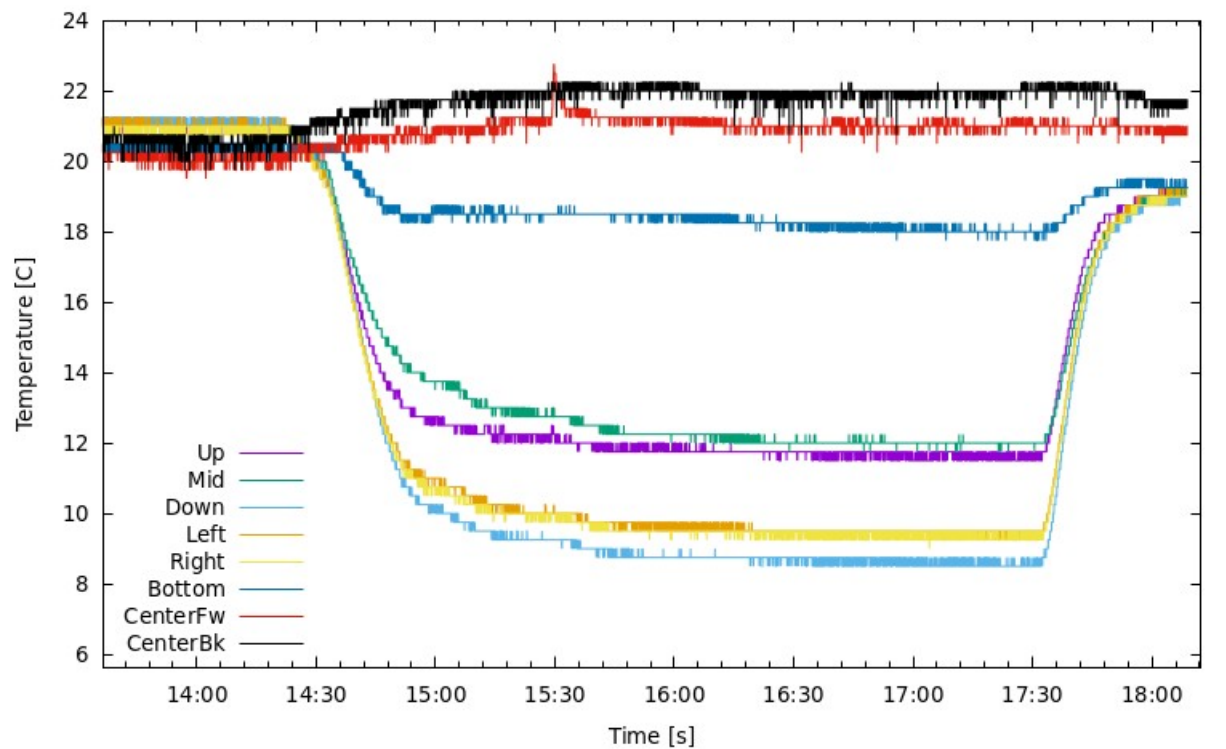


Chamber air humidity/temperature

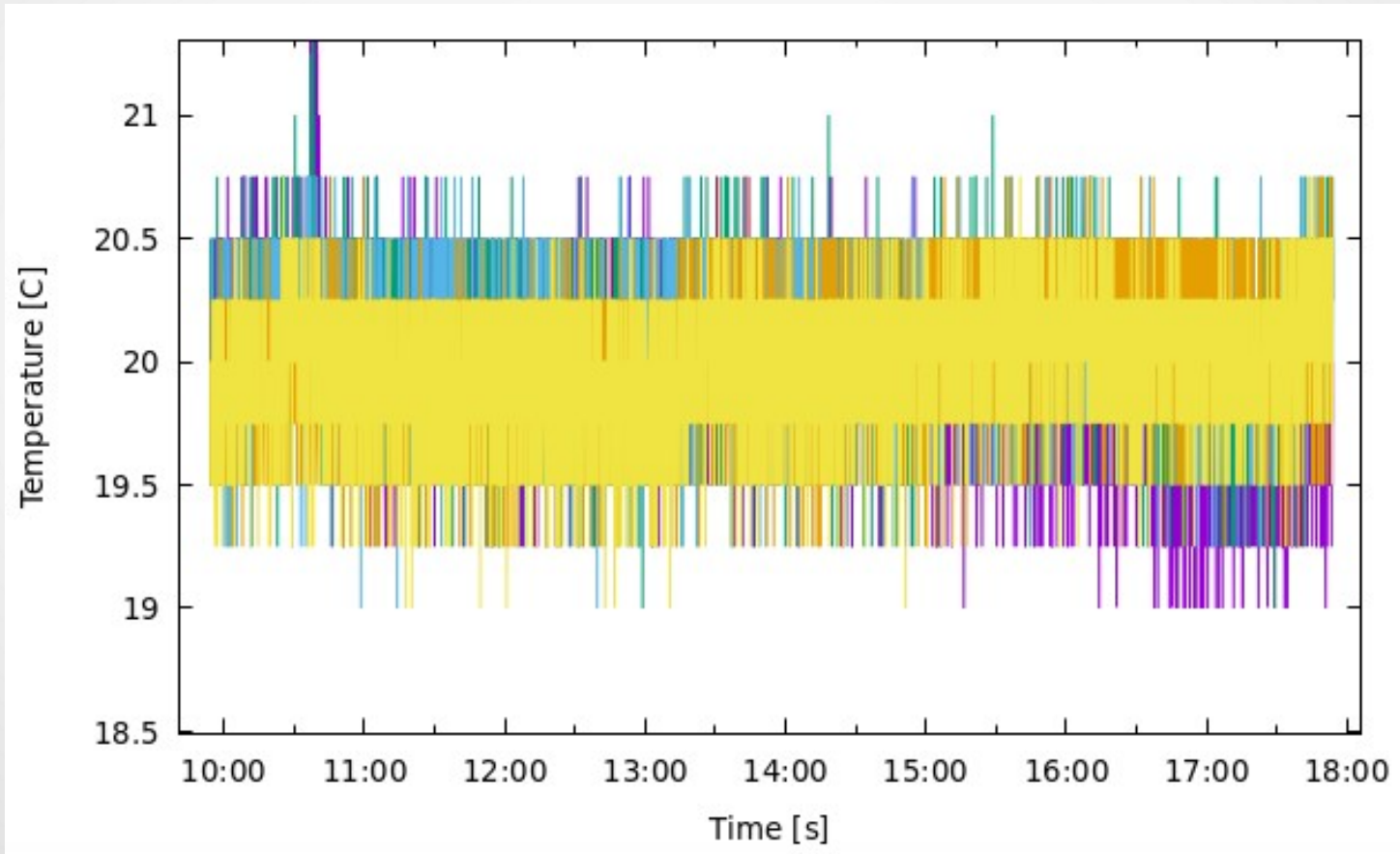
SHT75



Lucite 3 mm (inner side)

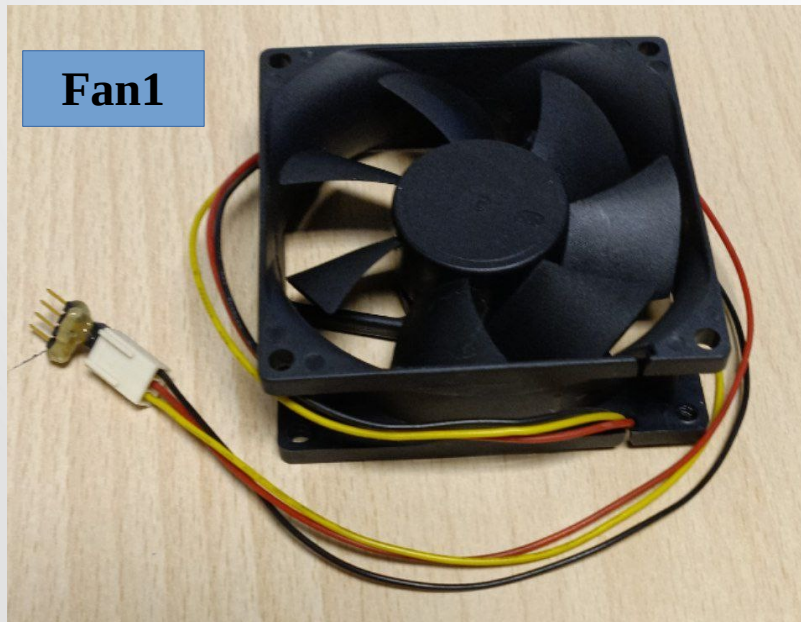


TC-A on rod (every 10 cm)



Setup modifications 1 (26 March)

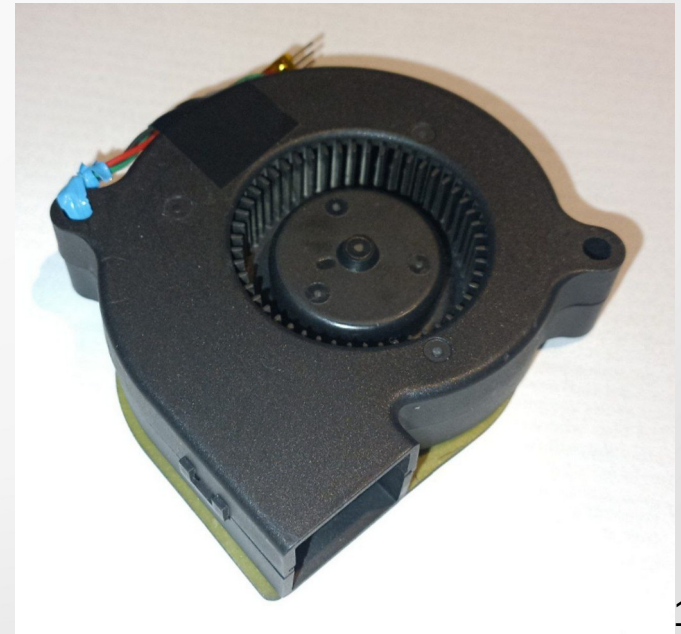
- 1) Added one standard 80x80 fan on the middle bottom of the chamber (3 cm) pointing up
- 2) Added one centrifugal fan in the middle of chamber, pointing to the center of the Lucite



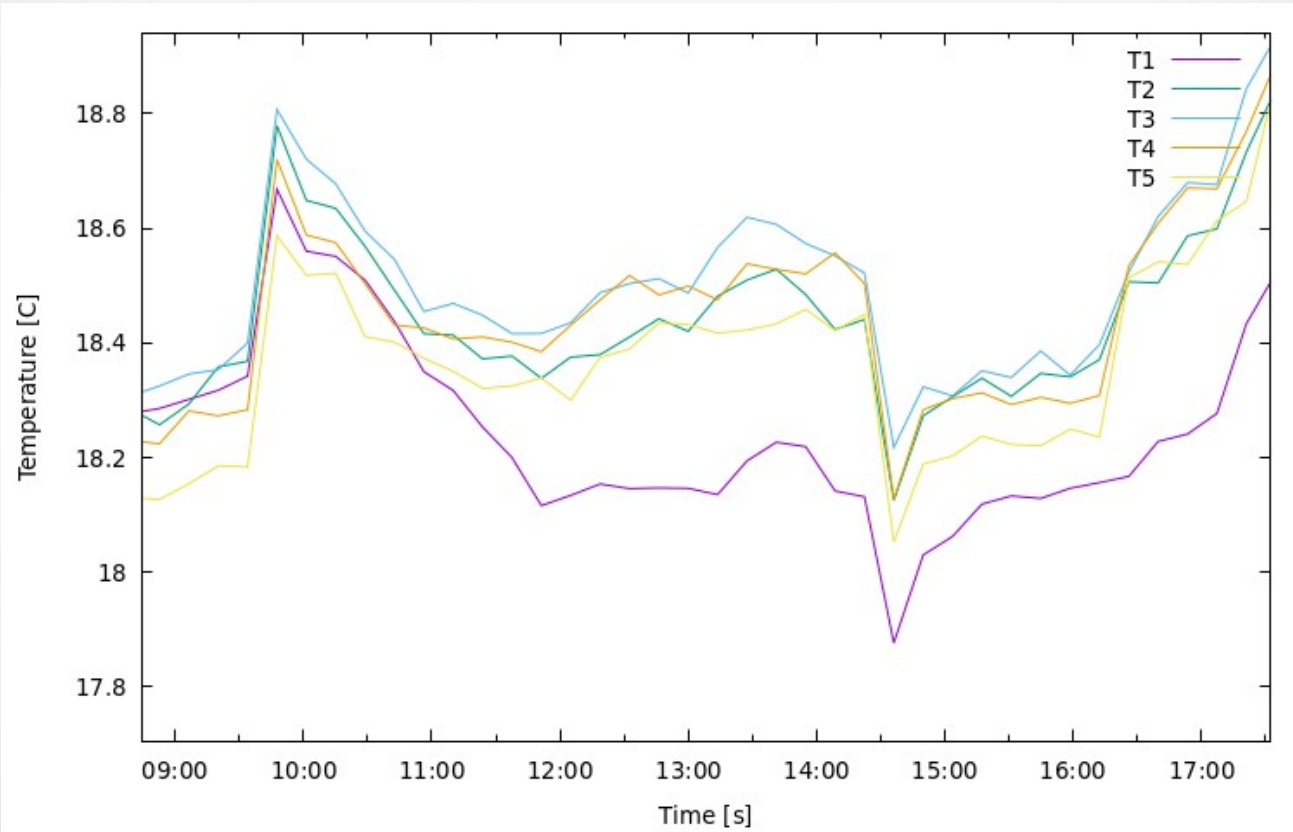
Fan1



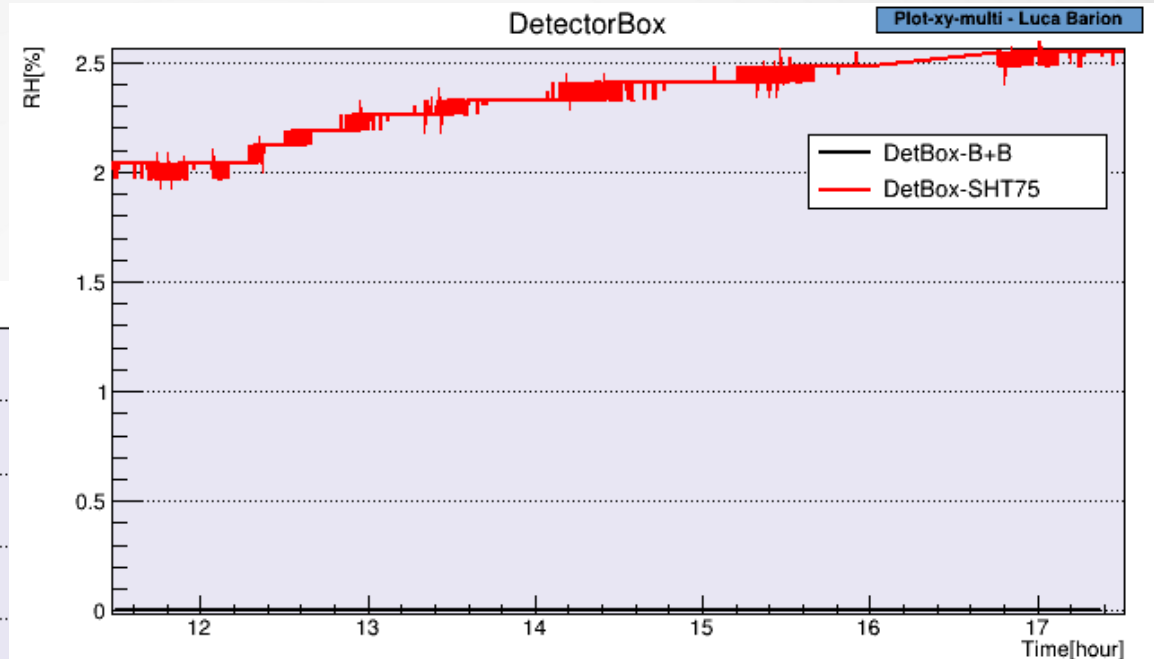
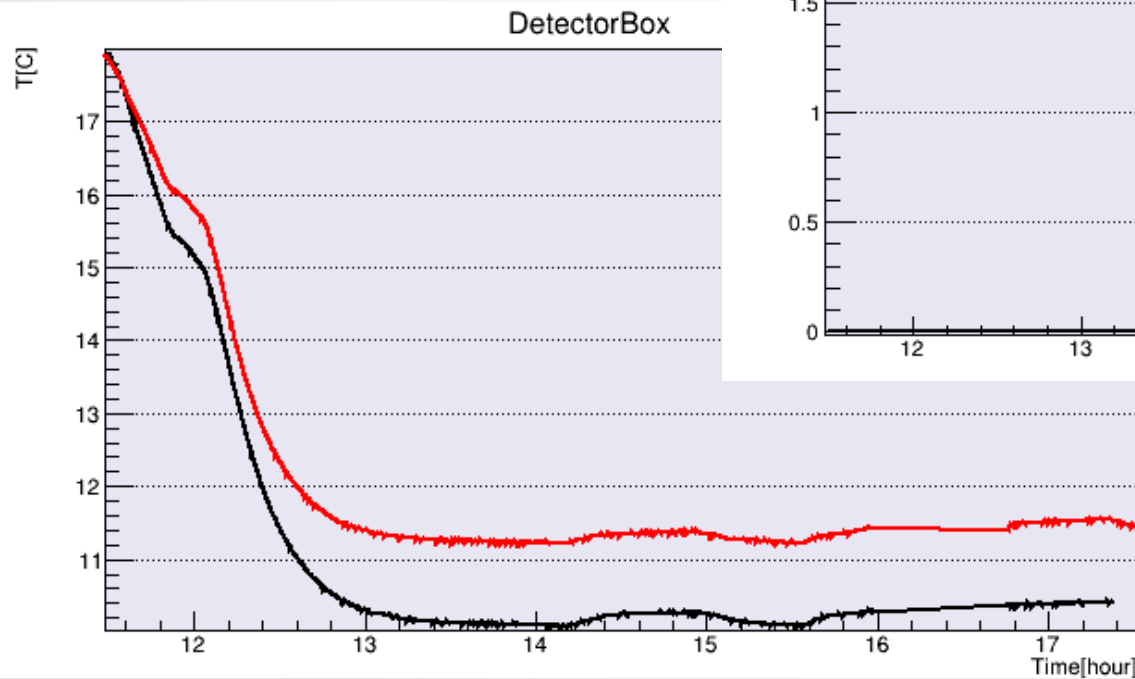
Fan2



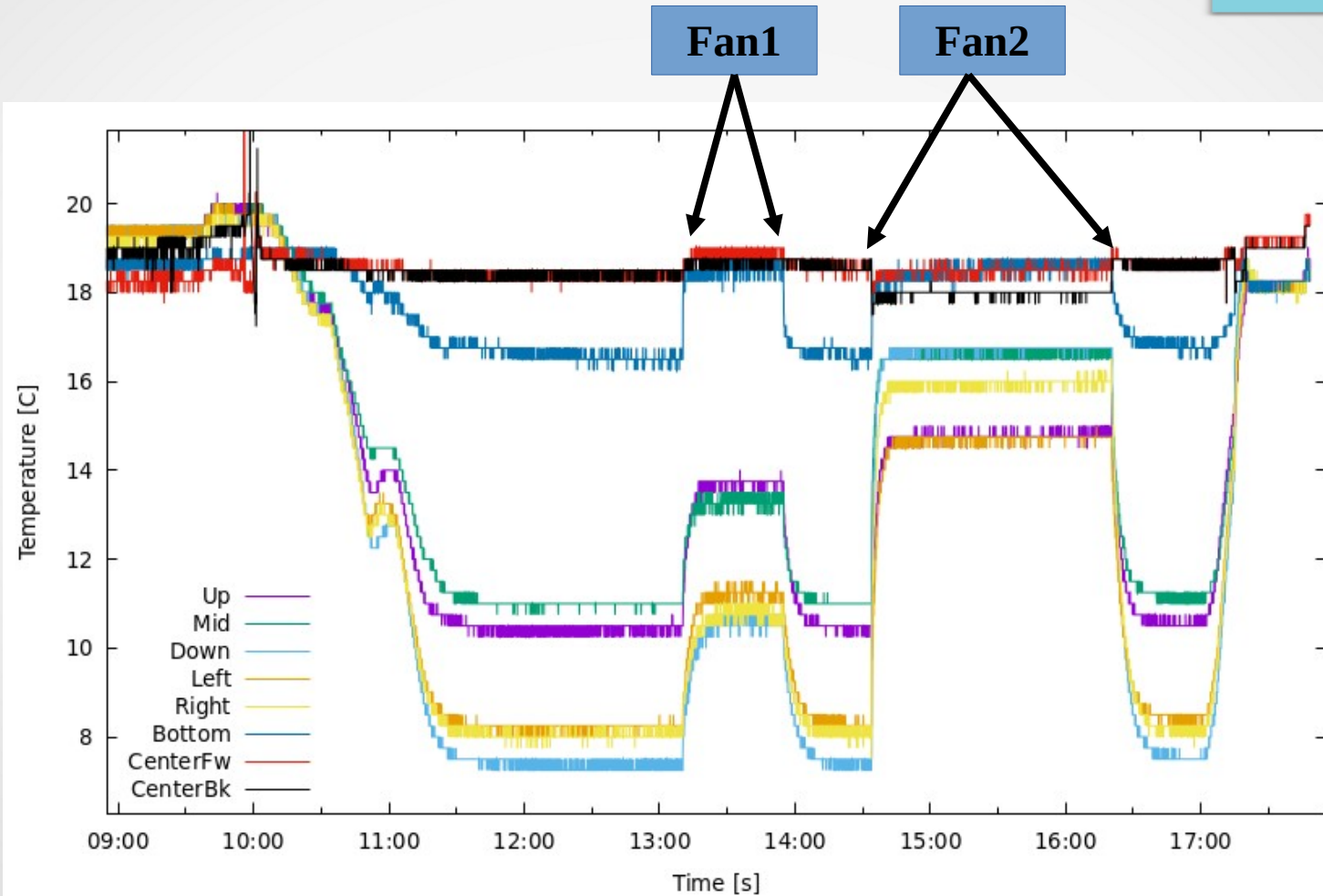
Thermocouples in line stable (averaged)



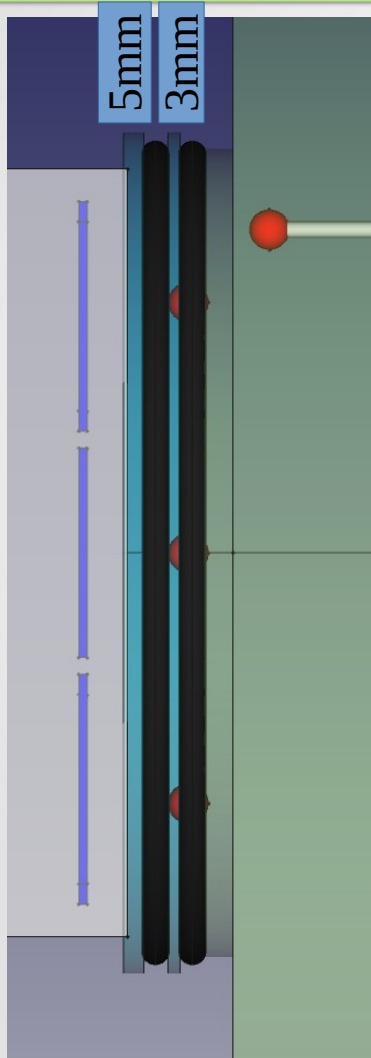
Detector box air humidity/temperature



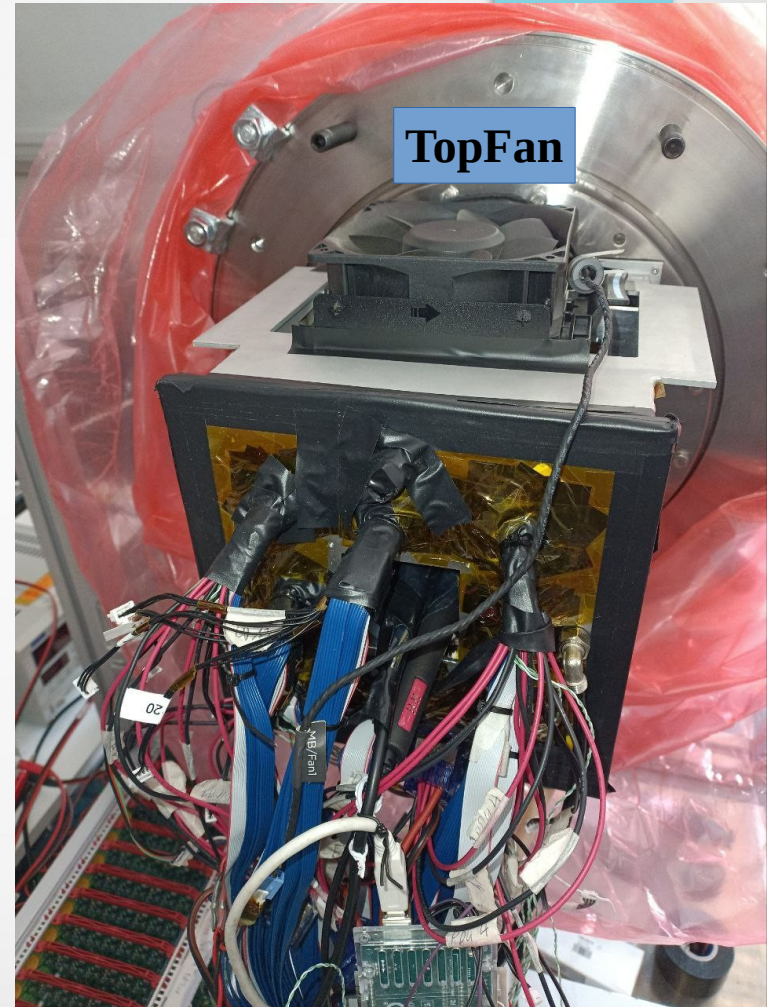
Effects of 2 fans separately



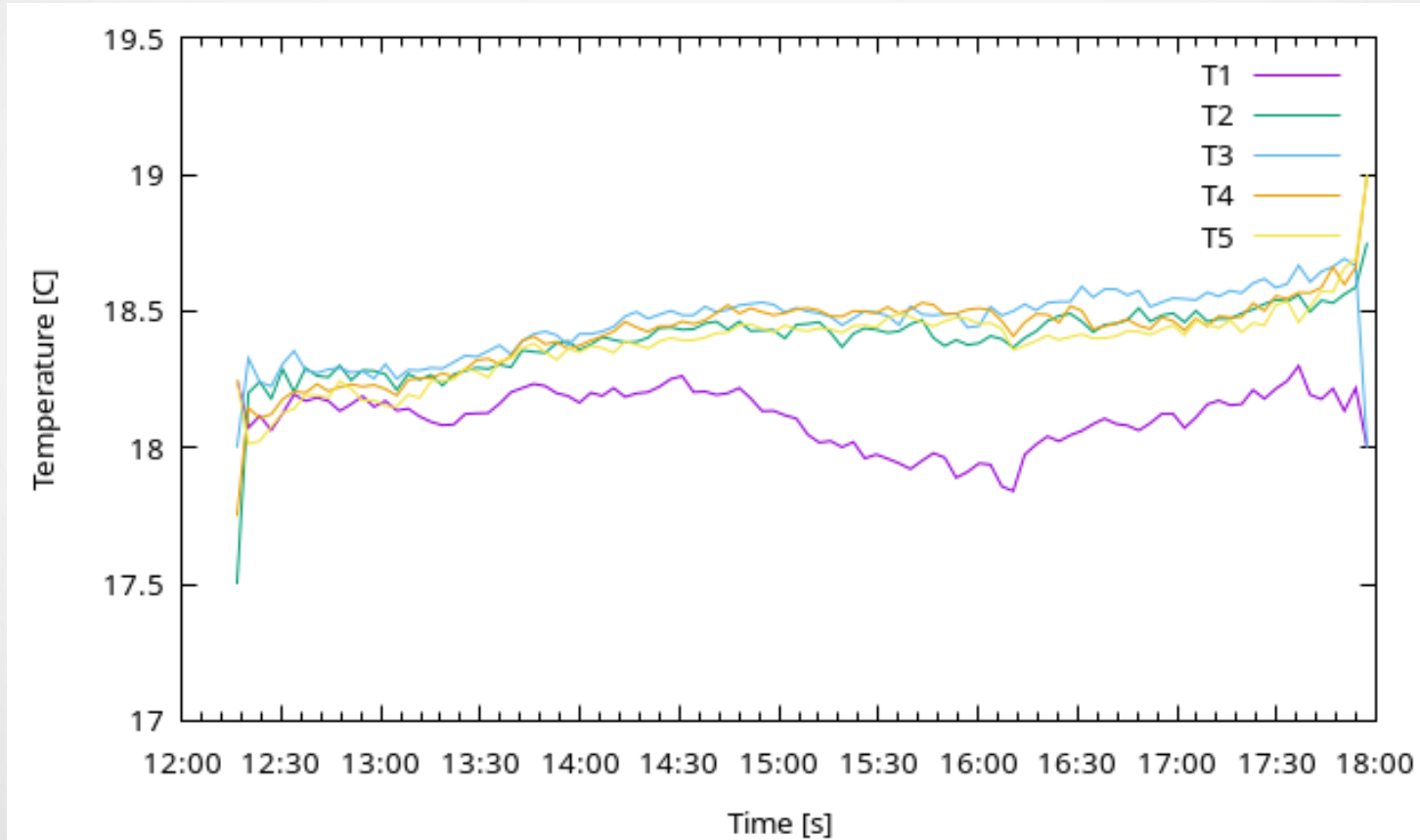
Setup modifications 2 (28 March)



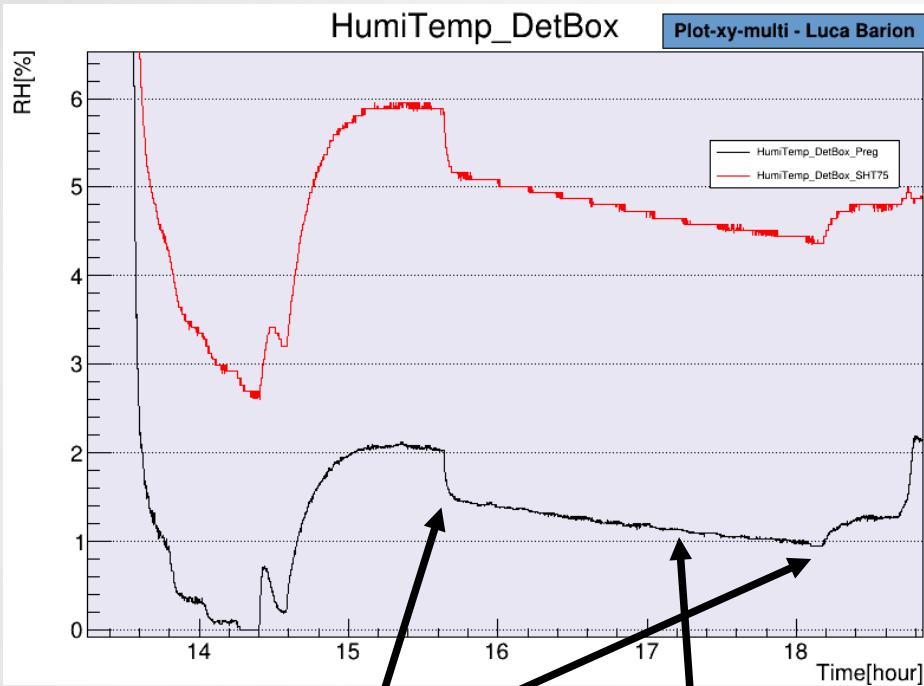
- 1) Added another Lucite window parallel to the first, separated by 6 mm air-gap
- 2) Added a big strong fan on top of detector box



Thermocouples in line stable (averaged)



Detector Box humidity/temperature



TopFan

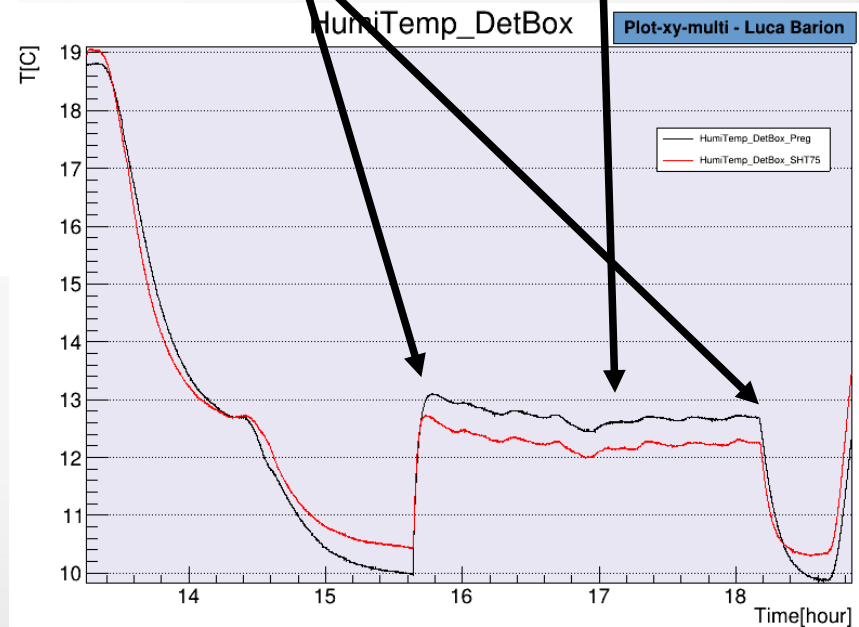
Fan2

SHT75

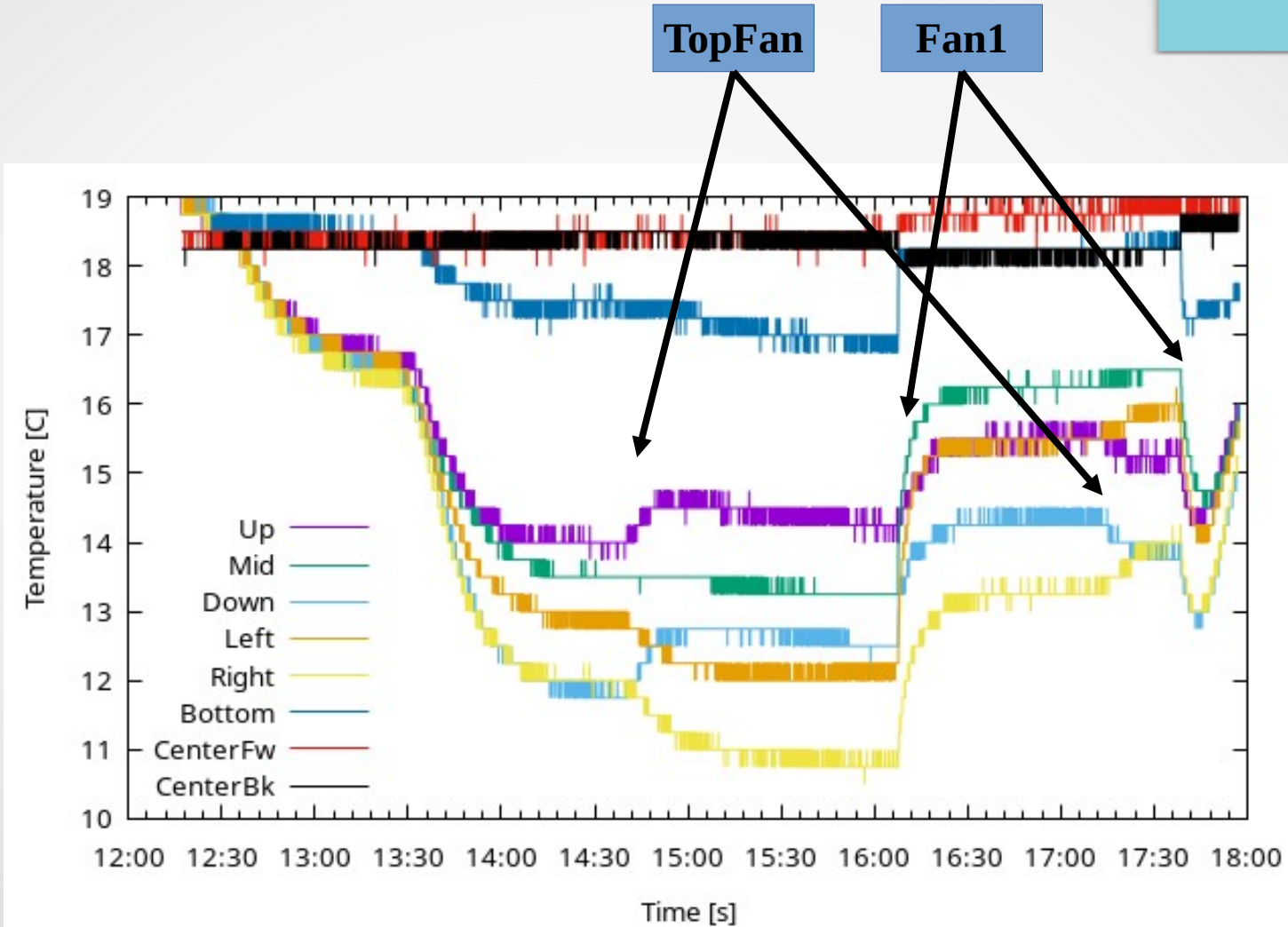
B+B

Fan2

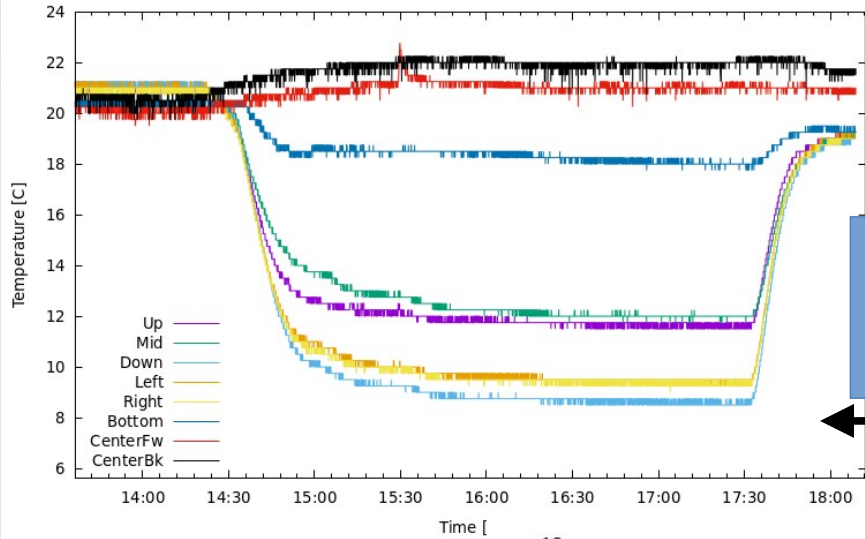
TopFan



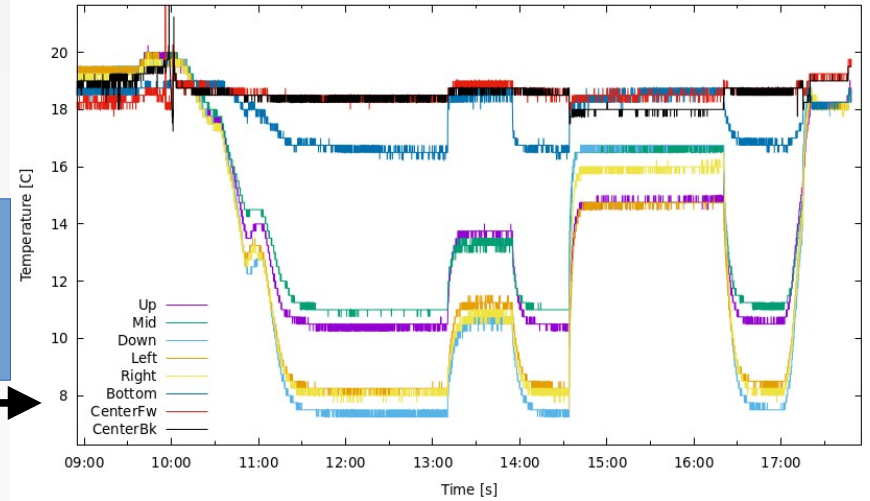
Effects of 2 fans separately



Comparison



Single
3 mm
Lucite



3 mm Lucite
6 mm air
5 mm Lucite

