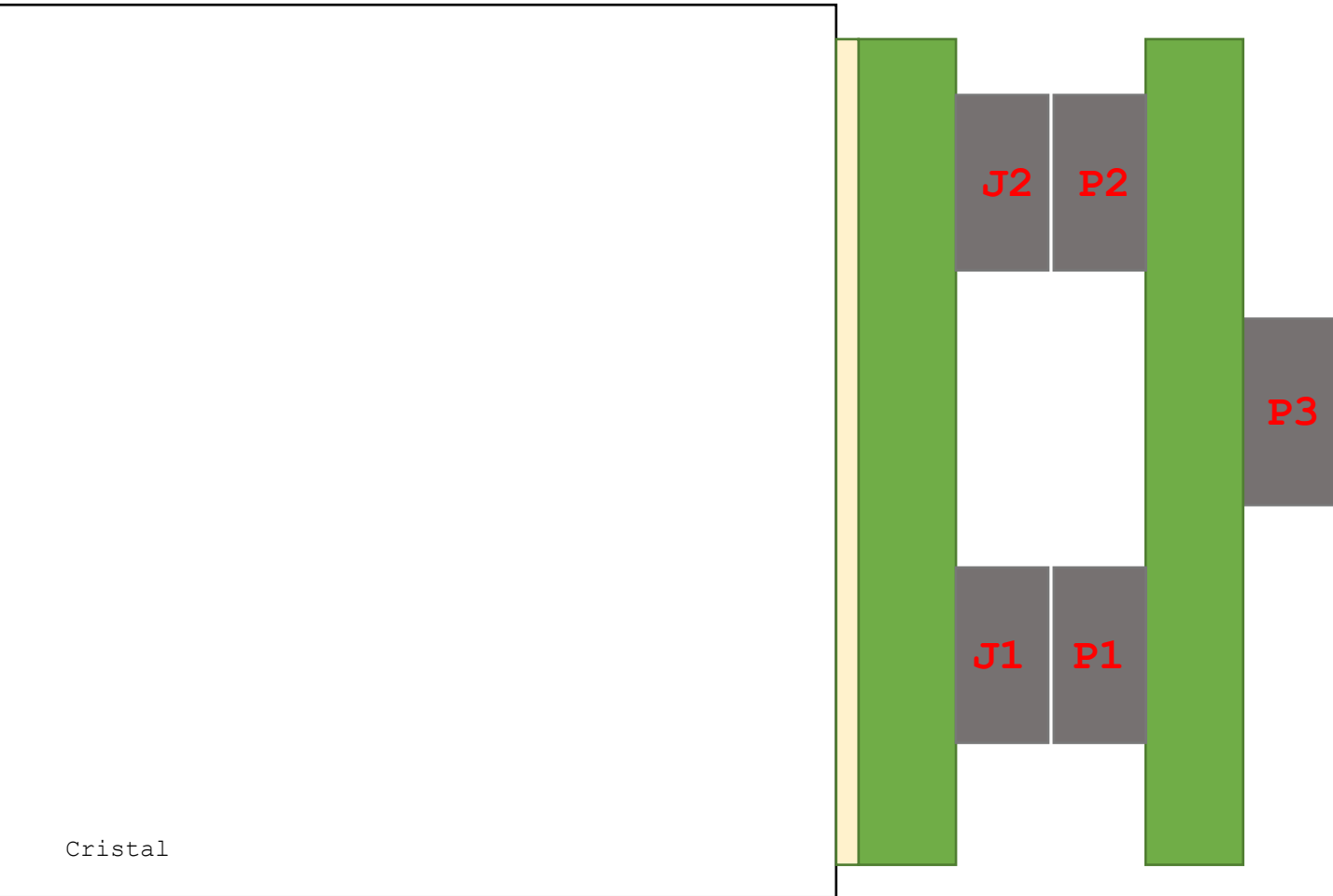


18 mm x 18 mm

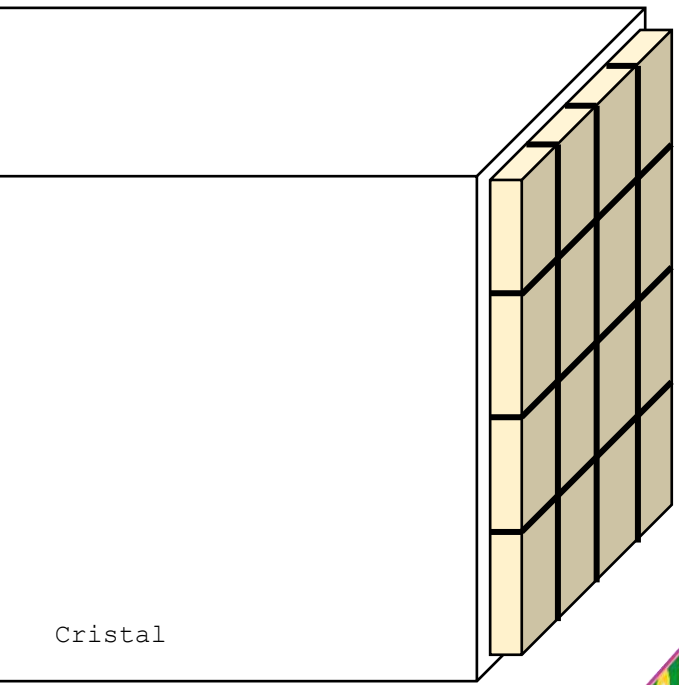
18 mm x 18 mm



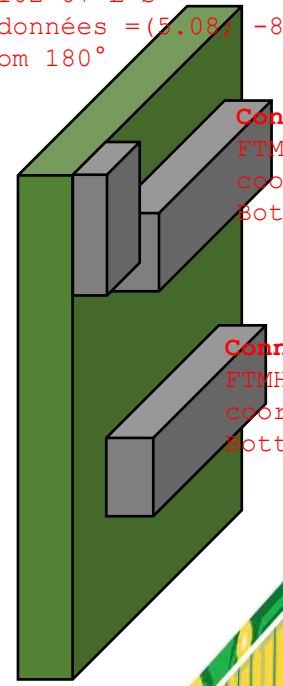
Cristal

Carte_16MPPC_3x3_independants

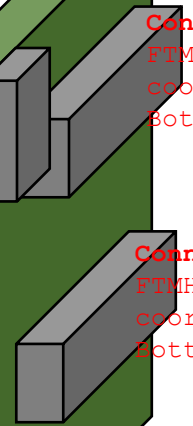
Carte_Fille_Sorties_Independantes



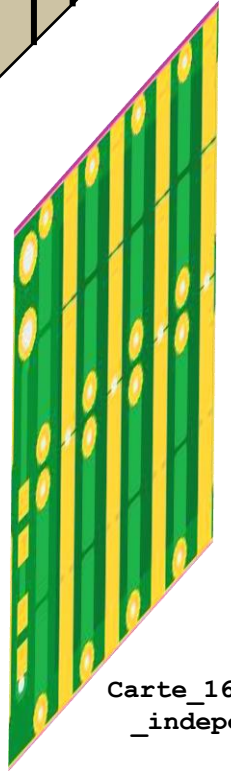
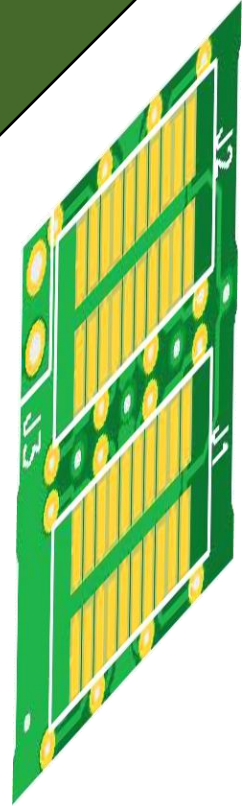
Connecteur J3 SAMTEC
TSW-102-07-L-S
coordonnées = (5.08 ; -8.75)
Bottom 180°



Connecteur J2 SAMTEC
FTMH-110-02-L-DV-ES
coordonnées = (4.55 ; -0.5)
Bottom 270°

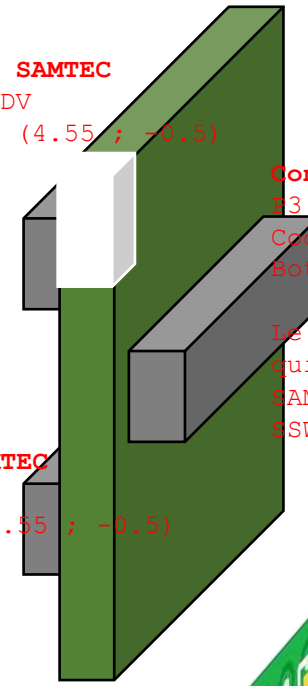


Connecteur J1 SAMTEC
FTMH-110-02-L-DV-ES
coordonnées = (-4.55 ; -0.5)
Bottom 270°



Carte_16MPPC_3x3_independants

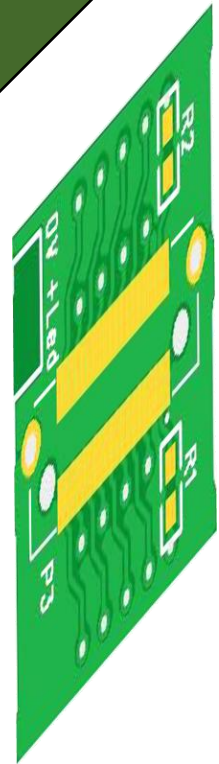
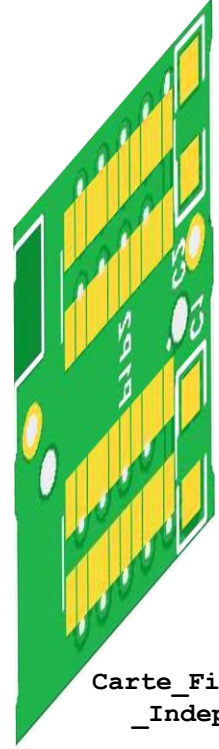
Connecteur P2 SAMTEC
MLE-110-01-G-DV
Coordonnées = (4.55 ; -0.5)
TOP 90°



Connecteur P3 SAMTEC
F3 = LSHM-120-02.5-L-DV-A-S
Coordonnées = (0 ; -1)
Bottom 90°

Le connecteur LED femelle qui sort de la découpe = SAMTEC TSW-102-02-G-S

Connecteur P1 SAMTEC
MLE-110-01-G-DV
Coordonnées = (-4.55 ; -0.5)
TOP 90°



Carte_Fille_Sorties_Independantes

