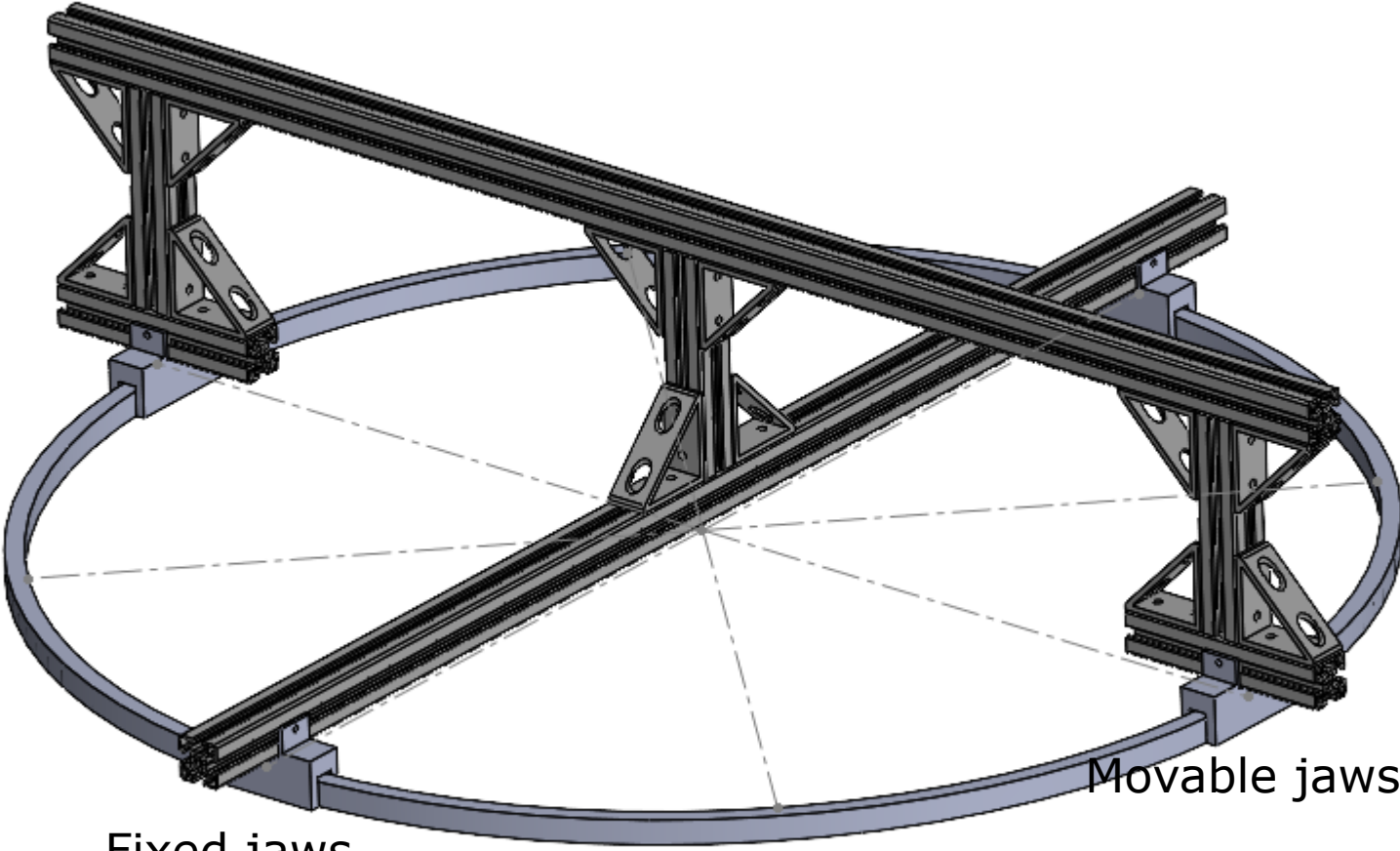


# pfRICH End Ring updates

Sushrut Karmarkar, Andy Jung

09 May 2024

# Two sides are fixed and other two adjustable with metrology

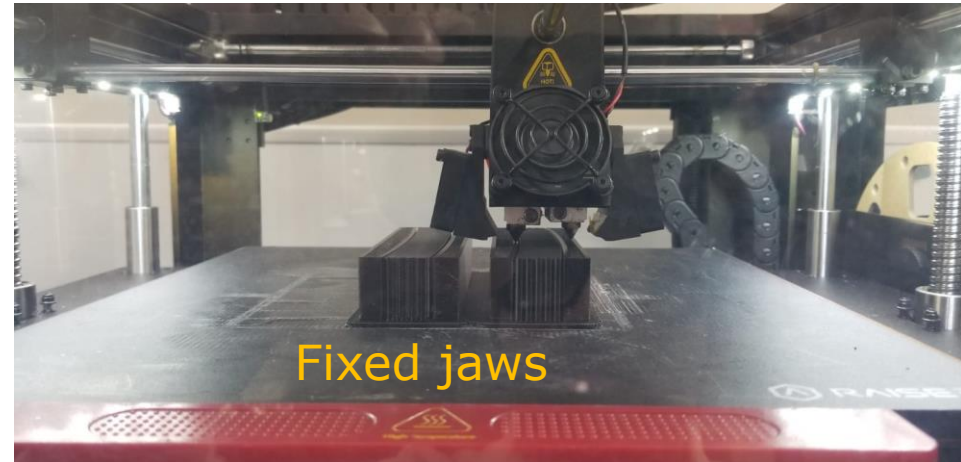
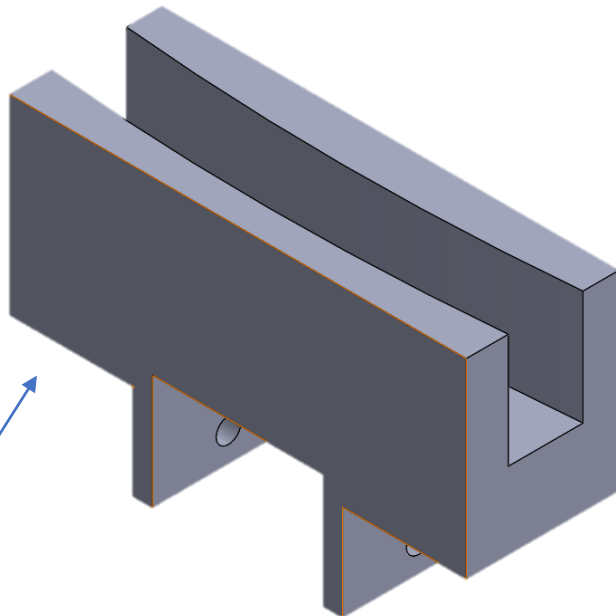


Fixed jaws

Movable jaws



# First end ring dry assembled



Prototype printed and tested – needed minor changes and now all final 4 parts being printed.

- ◈ 5 good (+1 scrap – for sealing tests) Quarts machined for End Ring
- ◈ Bond line thickness will be 0.004” controlled
- ◈ Using Araldite 2011 epoxy adhesive for bonding
- ◈ T- Beam mock-up tests – 2x2 sensor plane prototype
  - ◈ Ply design on-going
  - ◈ Ply cutting and part curing planned for early next week