

pfRICH updates

Sushrut Karmarkar, Andy Jung

20 May 2024



We faced more challenges than expected when getting the alignment done

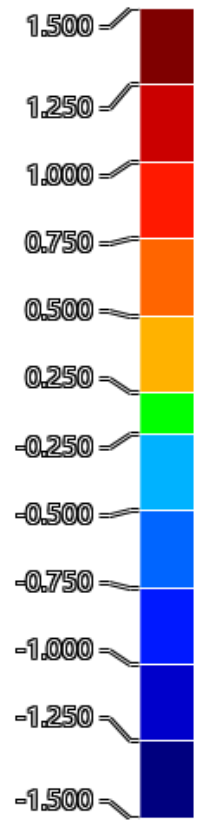
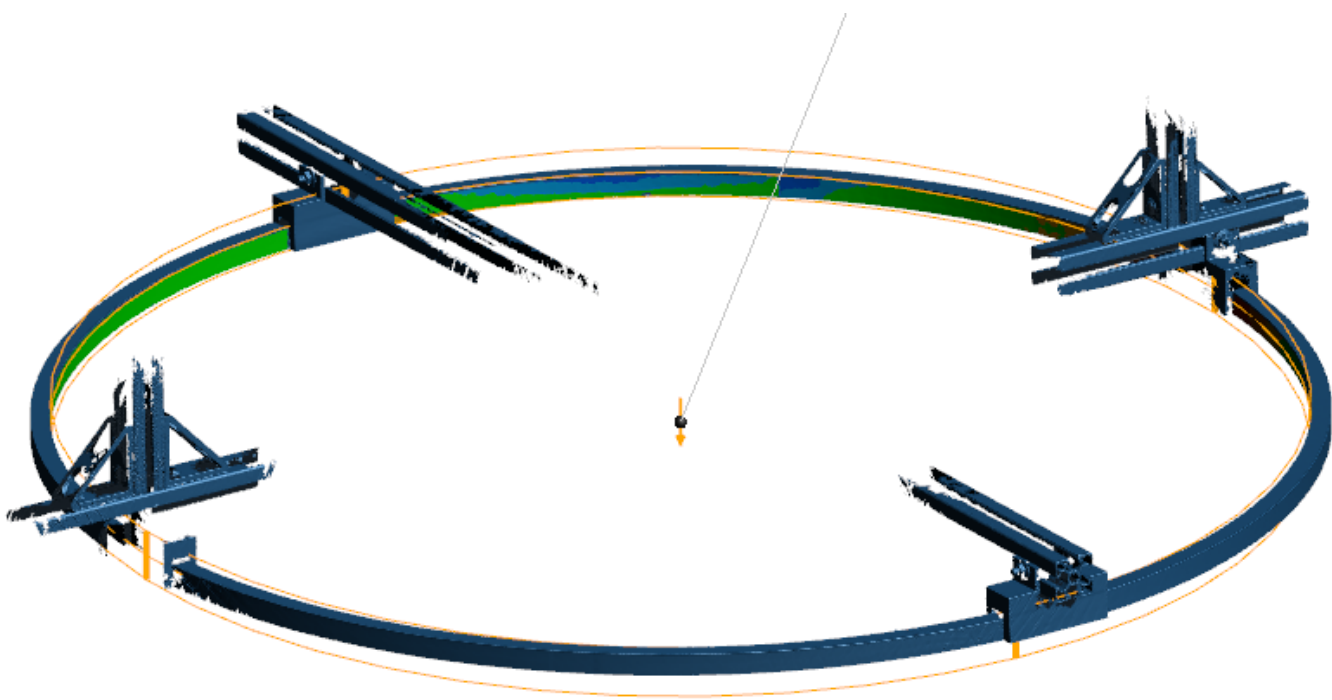
This was a good learning experience and will be documented in detail for things to work on to make the process smoother for future iterations

TARGET was
R630.272 mm

Achieved
R630.246 mm

Inner Cylinder Surface

Dimension	Nom.	Val.	Dev.	State
Radius±0.500		630.246		✓



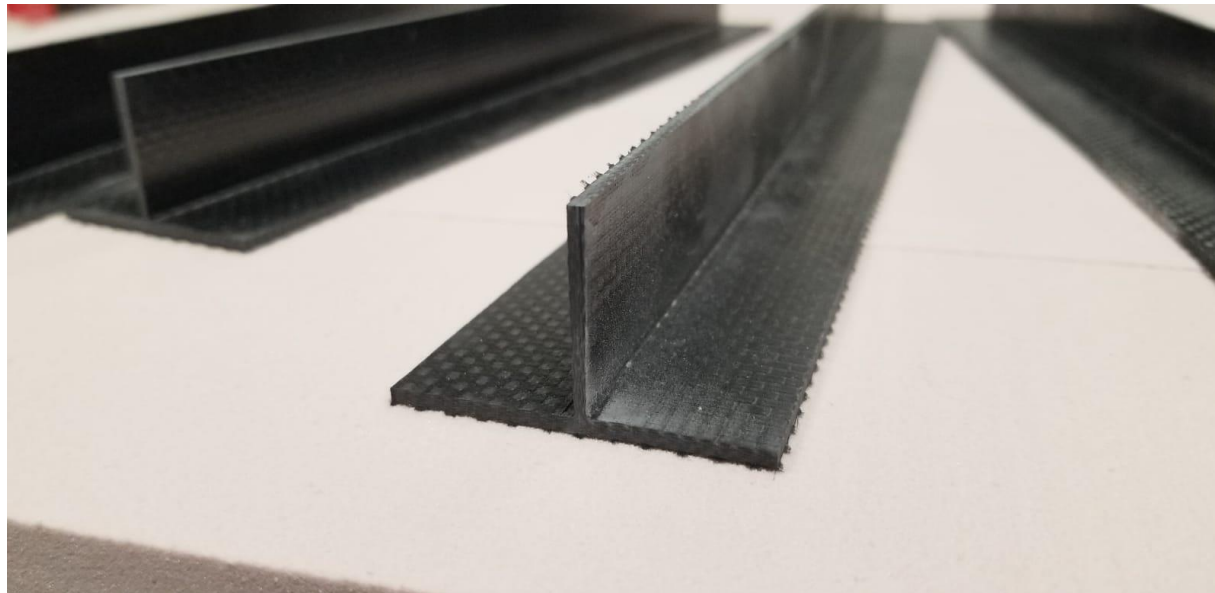
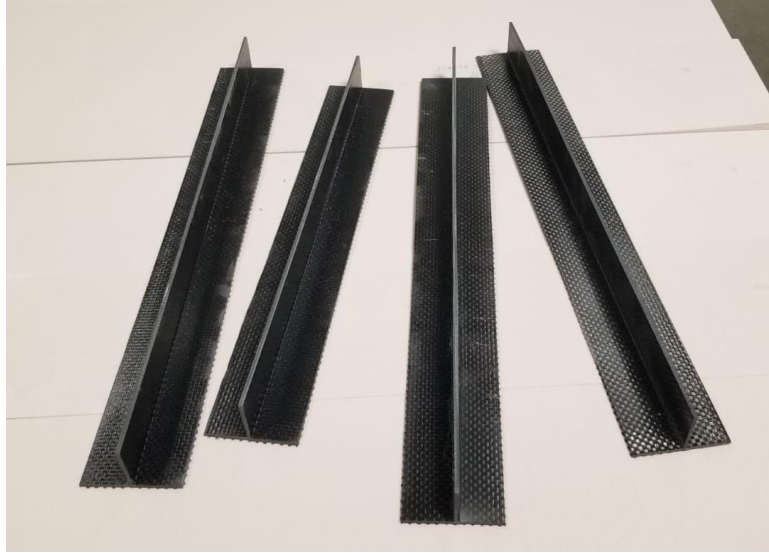
- ◊ 9 quarters completely machined and dry bond tested.
- ◊ 8 for 2 end rings and 1 spare for sealing tests

- ◊ First ring bonded – target radius was successfully achieved.
- ◊ Second end ring dry bond test and metrology in progress today – should finish by end of day
- ◊ Second ring bonding later this week – shipping to SBU **on Friday 24th May.**

- ◊ Delay in process from timeline by 1 week – caused due to disruptions in lab space access
 - ◊ And Sushrut being out of office 2nd half of last week.

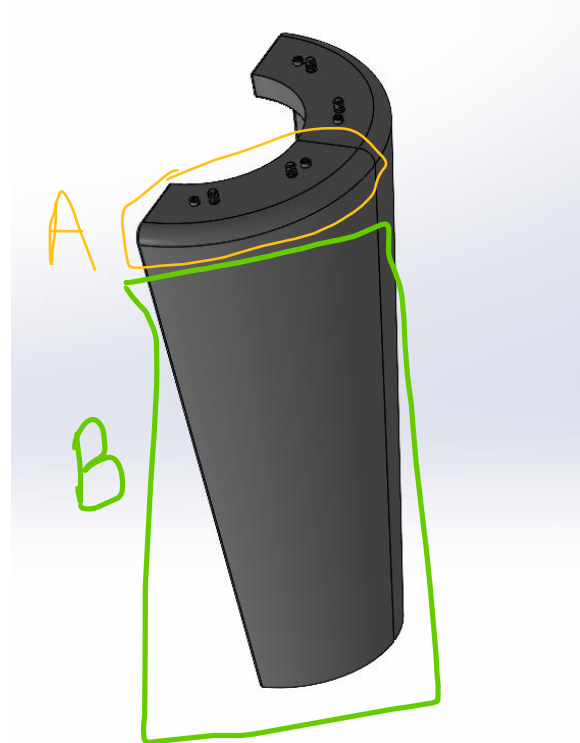
New storage mezzanine coming up in the lab – causing disruption to working space in the lab





T-beams edge cut to size – next step is to machine the bonding cross beams and get the first 2x2 prototype

- ◈ First curved lexan co-bond planned on Thursday this week
- ◈ Request by Kong – 7x7cm flat sample can be incorporated in this co-cure planned on Thursday 23rd May



- ◈ Inner Mirror – curved surface is too sharp for a single ply to wrap around – but this is not a problem and not needed as the structural requirements are minimal.
- ◈ We will be able to manufacture this geometry by using 2 pieces of pre-preg layup.
- ◈ No changes needed in the geometry as sent by Alex last week are okay and will be used for tool shape compensation simulations.